



# HAPPY NEW YEAR 2016

## **Narnolia Securities Ltd**

124, 1st floor 7/1, Lords Sinha Road Kolkata 700071,

Ph 033-22821251 Toll Free no : 1-800-345-4000

email: [research@narnolia.com](mailto:research@narnolia.com),

website : [www.narnolia.com](http://www.narnolia.com)

SGX NIFTY : 7920 ( 28 Pt Down)

**Quote of the Day**

"Long ago, Sir Isaac Newton gave us three laws of motion, which were the work of genius. But Sir Isaac's talents didn't extend to investing: He lost a bundle in the South Sea Bubble, explaining later, 'I can calculate the movement of the stars, but not the madness of men.' If he had not been traumatized by this loss, Sir Isaac might well have gone on to discover the Fourth Law of Motion: For investors as a whole, returns decrease as motion increases."

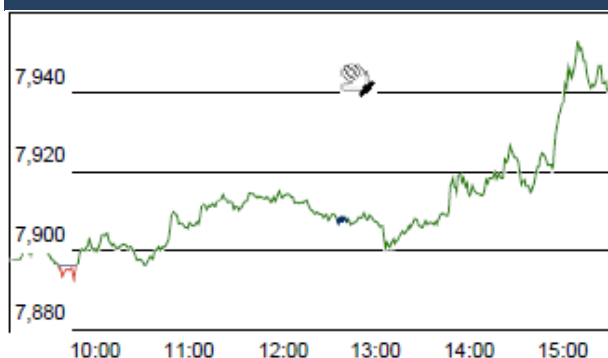
Warren Buffett

**Chart of the Day**

**Domestic Mutual Fund Trend**



**Index Action Nifty ( 31th Dec 15 )**



**Index**

Contents	Page	Coverage
News	2	Update
Economic Calendar	3	Update

**Market**

Name	Value	Change
Sensex	26,117.54	157.51
Nifty	7946.35	50.10
DOW	17,425.03	(178.84)
NASDAQ	5,007.41	(58.41)
CAC	4,637.06	(40.08)
DAX	Closed	
FTSE	6,242.32	(31.73)
NIKKEI	Closed	
HANG SENG	Closed	
EW ALL SHARE	14034.35	81.39

**Instituional Turnover**

**FII**

Investor	Buy(Cr.)	Sale(Cr.)	Net(Cr.)
31-Dec-15	4575.11	3451.70	1123.41
Dec,15	32472.15	36878.39	(4406.24)
2015	1083114.69	1100361.42	(17246.73)

**DII**

Investor	Buy(Cr.)	Sale(Cr.)	Net(Cr.)
31-Dec-15	2781.23	3038.90	(257.67)
Dec,15	20817.25	12475.60	8341.65
2015	446649.52	380852.70	65796.82

**Commodity Price**

Commodity/Currencies	Value	
GOLD	24941.00	↓
SILVER	33250.00	↓
CRUDEOIL	37.08	↓
COPPER	315.40	↓
NATURALGAS	155.80	↑
DOLLAR/RS.	66.15	↑
EURO/RS.	71.89	↑
POUND/RS.	97.67	↑

## Market Snapshot

### Top Price Performers

Top Performers 1D	% Change	Top Performers 1W	% Change	Top Performers 1M	% Change
INDOTECH	19.97	EUROCERA	75.08	GEMINI	143.40
KSOILS	19.51	ALMONDZ	50.85	DONEAR	121.40
CRANESST	16.60	RMMIL	50.43	PARACABLES	113.62
VICEROY	16.48	KSOILS	50.00	SPENTEX	103.16
ROHITFERRO	15.53	KAVVERITEL	48.75	RMMIL	88.04

Worst Performers 1D	% Change	Worst Performers 1W	% Change	Worst Performers 1M	% Change
CADILAHC	(14.89)	SHRENUJ	(22.16)	SHRENUJ	(58.02)
RESTILE	(12.19)	ERAINFRA	(20.25)	ICSA	(28.44)
SUJANAUNI	(11.17)	KGNENT	(19.14)	KGNENT	(28.25)
KGNENT	(9.31)	ALCHEM	(17.40)	PRITI	(27.63)
FERROALLOY	(9.04)	CADILAHC	(16.31)	USHAMART	(27.16)

## Top News

- ITD Cementation Mgt Guideline** : Company's order book and revenues saw significant improvement in calendar year 2015, is the word coming in from company CFO S Ramnath. Mgt expects to end CY15 with a topline growth of 60-65 percent. Going ahead, he sees atleast 10-15 percent revenue growth in CY16. The company's order book currently stands at Rs 5700 crore. ITD Cementation is also pursuing several opportunities in marine and MRT space.
- Cadila Healthcare** has received a warning letter issued by the US Food and Drug Administration relating to its Moraiya formulation facility and Ahmedabad oncology API facility (Zyfine)," says the Gujarat-based pharma company in its filing to exchanges. In its clarification note, it says there are no products in the US market which use API of Zyfine facility.
- Orchid** received establishment inspection report (EIR) from the US Food and Drug Administration (USFDA) based on the successful inspection closure for formulation manufacturing facility located at Irungattukottai, Sriperumbudur, Kancheepuram District, India . Its facility was inspected by USFDA in May 2015
- U.S. Natural Gas Storage** fell to a seasonally adjusted annual rate of -58B, from -32B in the preceding month. Analysts had expected U.S. Natural Gas Storage to fall -57B last month.
- U.S. Department of Labor** said the number of individuals filing for initial jobless benefits in the week ending December 25 increased by 20,000 to a seasonally adjusted 287,000 from the previous week's total of 267,000. Analysts expected jobless claims to rise by 3,000 to 270,000 last week.
- Russian CPI** rose to a seasonally adjusted annual rate of 0.8%, from 0.8% in the preceding month. Analysts had expected Russian CPI to rise 0.9% last month.  
Russian CPI 0.8% vs. 0.9% forecast
- Reserve Bank of Australia** said that Australian Private Sector Credit rose to a seasonally adjusted 0.4%, from 0.7% in the preceding month. Analysts had expected Australian Private Sector Credit to rise 0.6% last month.
- South Korean CPI** rose to a seasonally adjusted annual rate of 1.3%, from 1.0% in the preceding month. Analysts had expected South Korean CPI to rise to 1.1% last month.
- Amtek Auto** has pledged its entire stake of nearly 71 percent in group firm JMT Auto with IL&FS Trust Company (ITCL). Amtek Auto has pledged 18,07,06,100 shares of JMT Auto, constituting 71.73 percent stake, with the ITCL on December 29 . Jamshedpur-headquartered, JMT Auto manufactures over 2,000 different components ranging from engine components, gears, shafts, pins, bushes, gear rings, axles among others
- Videocon Industries Ltd** has fully redeemed USD 194.40 million (approx Rs 1,290 crore) foreign currency convertible bonds (FCCBs) through a combination of cash payout and fresh FCCBs. The company paid an amount of USD 97.2 million (Rs 644.87 crore) along with applicable interest and fees in cash and issued another series of foreign currency convertible bonds of amount USD 97.2 million on December 30, 2015 as apart of redemption process.
- IDBI Bank** to raise Rs 3,771 crore during the year, by way of Qualified Institutional Placement (QIP) represents about 26.45% share of IDBI Bank
- Advanta Board of directors** approved the conversion of 25 foreign currency convertible bonds (FCCBs) into global depository receipts (GDRs) . Board also approved allotment of 39,72,070 equity shares of Rs 2 each to JP Morgan Chase Bank, NA - Depository Bank to issue appropriate GDRs
- Wipro** is in the final stages of fully acquiring Drivestream, a management and IT consulting firm in which it had picked up a minority stake in March . Headquartered in Washington, DC, Drivestream provides Oracle-based cloud services across sectors ranging from insurance, healthcare to telecom.

Economic Calendar					
Country	Monday 28th Dec 15	Tuesday 29th Dec 15	Wednesday 30th Dec 15	Thursday 31th Dec 15	Friday 1th Jan 16
US		Goods Trade Balance , S&P/CS Composite-20 HPI y/y .	Chicago PMI ,Pending Home Sales m/m , Crude Oil Inventories .	Unemployment Claims , Natural Gas Storage .	
UK/EURO ZONE	Italian 10-y Bond Auction	German Prelim CPI m/m ,French Consumer Spending m/m , Index of Services 3m/3m .	Spanish Flash CPI y/y , M3 Money Supply y/y , Private Loans y/y , German Import Prices m/m .	ECB Monetary Policy Meeting Accounts , Housing Equity Withdrawal q/q .	
INDIA					



(Regn. No. : INP 000004011)

## Narnolia Securities Ltd.

### Narnolia Research Lab

Stellar IT Park | 5th Floor | Office Space No. 6 | Tower-IIInd Plot No. C-25 | Sector-62 | Noida | Ph : 0120-4215110

### Central Strategy Desk - Kolkata

124 | 1st Floor | 7/1 Lords Sinha Road | Kolkata - 71  
Ph : 033-22821500 | M : 93347 14418, 98302 69810