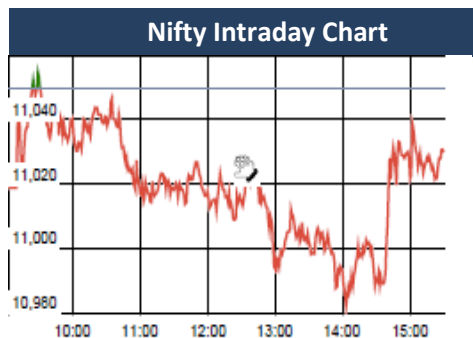


KEY LEVELS

Support 1 : 11039
Support 1 : 10782

Resistance 1 : 11200



Event Today

Macro Data

Union Budget 2018

Interim Dividend

IBULHSGFIN : Rs 14/-

KIRLOSENG : Rs 2.5/-

RML : Rs 4.5/-

SYMPHONY : Rs 1/-

(Ex Date : 1. 2.2018)

Spin Off

SUNDARFIN

(Ex Date : 1. 2.2018)

Income Distribution (InvIT)

IRBINVIT

(Ex Date : 1. 2.2018)

Result

AKZOINDIA, ASHOKLEY,BAJFINANCE

CEATLTD, CERA, CUMMINSIND

FOSECOIND, HAWKINCOOK

MAGMA, MRF, POWERGRID,

ORIENTPPR, REDINGTON

TITAN, UCALFUEL, ZEEMEDIA

Concall

Redington : 4:00 PM

Equitas Holdings : 4:30 PM

Titan : 6:00 PM

Market Outlook

After opening on a subdued note, Nifty continuously fell to make an intraday low of 10979.40 yesterday. However it was unable to maintain at the lower level and some pullback to 11040 was seen towards the closing session. At the end of the day the index closed at 11027.70. It had a net loss of 0.20% over the previous trading day's close. The broader market was in the grip of bears as the small cap and midcap indices under-performed the benchmark index and closed the day after losing 1.2%-1.5%.

On the sectoral front, Pharmaceutical, Metal, FMCG and Information Technology indices were the main catalysts to drag the market lower while the Banking index closed in green. The breadth of the market was negative and about two shares declines for every share advanced at NSE.

Investor sentiment continues to be highly positive. Nifty put writers are writing options of higher strike price almost as quickly as Nifty makes newer high. On-going Q3 quarter results are unfolding almost in-line with the street expectations. And double-digit growth for Nifty EPS in FY18 is almost secured. The breadth of the market was negative and about two shares declines for every share advanced at NSE.

Though there does not yet appear any threat to this on-going rally in terms of market technicals, it's worth to remember that stock market can never be a one-way street. So it would be prudent to continue trading long but with trailing stop loss. Post fresh gap made again this Monday, Nifty trend reversal level gets shifted upward to 10,782

Quote of the Day : "Charlie and I decided long ago that in an investment lifetime it's too hard to make hundreds of smart decisions. That judgment became ever more compelling as Berkshire's capital mushroomed and the universe of investments that could significantly affect our results shrank dramatically. Therefore, we adopted a strategy that required our being smart - and not too smart at that - only a very few times. Indeed, we'll now settle for one good idea a year." **Warren Buffett**

Market

Market	Value	% Change
Morning Traded Market		
SGX NIFTY	11,086.50	0.25%
NIKKIE	23,366.09	1.15%
HANG SENG	33,013.25	0.38%
Yesterday Closing Market		
Sensex	35,965.02	-0.19%
Nifty	11,027.70	-0.20%
DOW	26,149.39	0.28%
NASDAQ	7,411.48	0.12%
CAC	5,481.93	0.13%
DAX	13,189.48	-0.06%
FTSE	7,533.55	-0.72%
EW ALL SHARE	20,228.58	-0.53%

% Change in 1 day

Commodity Price (Yesterday Closing)

Commodity/Currencies	Value	% Change
GOLD	30117.00	0.22%
SILVER	39319.00	0.50%
CRUDEOIL	68.97	0.12%
NATURALGAS	190.50	-8.24%
DOLLAR/RS.	63.58	-0.04%
EURO/RS.	79.18	0.09%
POUND/RS.	89.91	0.12%

% Change in 1 day

Institutional Turnover

FII			
Investor	Buy(Cr.)	Sale(Cr.)	Net(Cr.)
31-Jan-18	6183	6288	(106)
Jan-18	134222	124654	9568
2018	134222	124654	9568
DII			
Investor	Buy(Cr.)	Sale(Cr.)	Net(Cr.)
31-Jan-18	4636	4918	(282)
Jan-18	93030	92631	399
2018	93030	92631	399

CHOLAFIN**"ACCUMULATE"****1st Feb 2018**

CHOLAFIN has well diversified portfolio both in terms of AUM and geography. It has been one of the key beneficiaries from strong CV sales in the industry. We believe with the Government's effort to push infrastructure activity and revival in rural demand, CHOLAFIN is well placed to reap the benefit of rise in vehicle demand. While the other segment is small but management is growing is cautiously and steadily. We are factoring 18% AUM CAGR over FY17-20e in our model. Management believes assets quality to improve further going ahead. Improvement in productivity level has led the cost to income ratio in declining trend over last 5 years. With the focus on technology and productivity, opex is expected to further moderate going forward to boost the RoE. We roll over our target price to FY20 estimates and value CHOLAFIN at Rs 1386 (3x BVPS FY20e) and recommend ACCUMULATE.

SUVEN**"BUY"****1st Feb 2018**

Suven continued to post excellent quarterly performance in 3QFY18. The company reported net sales of Rs.164 Crores in 3QFY18. This was largely driven by healthy CRAMS growth of 57% QoQ growth due to the movement of the molecule from one stage to other stage. Considering the potential for scaling up in the CRAMS segment which has high margins coupled with the commercial/pre-commercial supplies, strong balance sheet and improving return ratios, we are positive about the long-term outlook for the company. Factoring the upcoming growth opportunities we value the stock at 20 times of FY19 Expected EPS and maintain BUY while retaining our target price of Rs 268.

*For details, refer to our daily report- *India Equity Analytics***Top News****Suven: Q3FY18 Concall Update**

→ Management expect topline growth would be around 11%-14% on back of strong growth in CRAMS business (Rs 600Cr-650Cr) and the bottom line should be up by 10%-15% in FY18.

→ Suven has executed 800+ NCE-based CRAMS projects and is working on 116 projects (75 in Phase I, 34 in Phase II and three in Phase III) by end of 3QFY18.

→ SUVN-502 is in phase 2A clinical trials in the US. The company has enrolled 370 patients (of 537). Management expects clinical trials to be completed by mid-CY18 and the results to come by end-CY18.

→ Management has given guidance to file about 10 ANDAs by 2020.

→ Management has guided maintenance capex of Rs100Cr in FY18 & FY19. The Company has capex plans of Rs120Cr over two years for additional block.

→ Consolidated R&D expenses for FY18 & FY20 after taking SUVN-502 will be around \$19-\$20 million.

→ SUVN-911 will be entering Phase 1 clinical trial around May 2018. SUVN-G3031 Phase 2 clinical trial to start somewhere in this calendar year. SUVN-D4010 will be ready for Phase 2 BY 2019.

>> **Prataap Snacks Mgt Guideline** : The company grew by 16 percent in H1 and expect to achieve similar growth in H2 . See good growth in Q4 and a better H2 than H1. Company is looking at the margin between 8 percent and 10 percent going forward . On new launch, Company said that they have just launched Yum Pie two months back. The initial response was very good and Company is looking for a revenue growth of around Rs 40 crore from Yum Pie.

Company Will increase the capacity of namkeen and extruded snacks, it will be around Rs 150 crore over the next two years.

APLAPOLLO 3QFY18 Concall highlights:

>> Company expects EBITDA to average around Rs.3300-Rs.3400 (Rs.200 up/down depending on market sentiments) in future.

>> EBITDA margin are expected to improve as customer move from standardized products to customize products produced through DFT technology.

>> 6 lines out of 8 lines of DFT are installed and last 2 lines are expected to be installed by April 2018.

>> Production through DFT currently at around 10-12% of total production and out of that 90% is standard products with no customization.

>> Shifting of customers from standardized products to customized products would help in improving EBITDA margin and this shifting would take 2-2.5 years.

>> Company expected to grow at 20% for next 3 years. Company is also focusing on Tier-2 cities. Replacement (wood and concrete) market main focus area.

>> JV with Japanese company Daiwa Steel Tubes Industries called off because of Daiwa trying to restrict APL Apollo's geographical reach and marketing strategies, company said it would not impact significantly as volume to be sold under agreement would have been around 3% of total sales.

>> Company's sales head has resigned due to personal reasons.

>> GI volume decreased because shutting down of one galvanizing line for modification and is expected to be functional in a month.

>> Company transfers increase in steel prices in a week's timeframe and if increase in price is significant (10%) then it takes about two weeks.

>> 80% of sales through distributors and construction, housing, industrial, solar and transportation sector being major consumers.

>> Company has no significant plan for capex in near future.

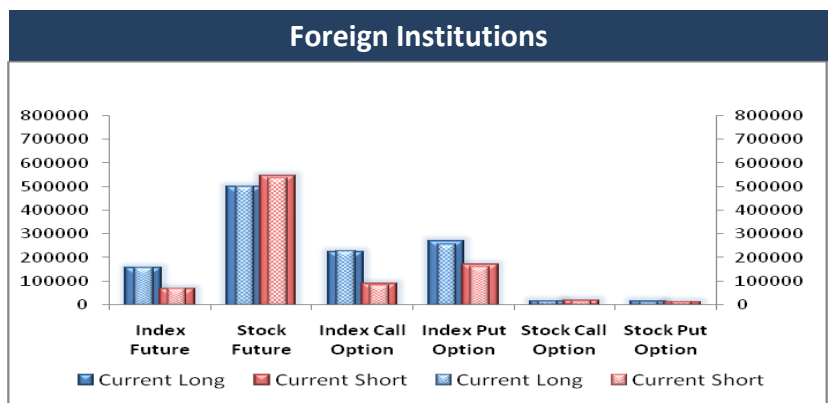
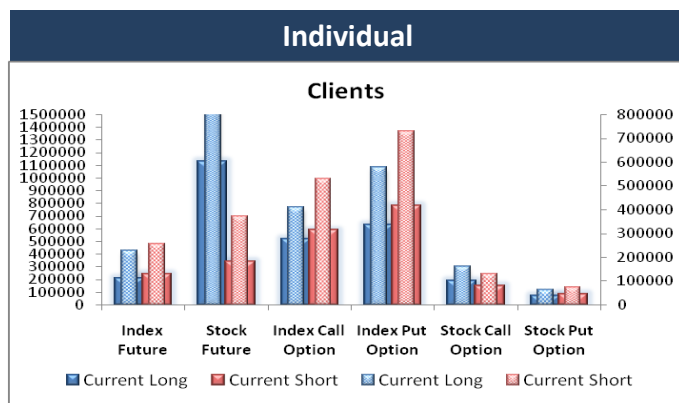
>> Company keeps raw material inventory of around **45 days**.

>> **Order inflows from Nextracker JV. Arrangement between companies is as Nextracker gets order to set up solar plant** APL Apollo

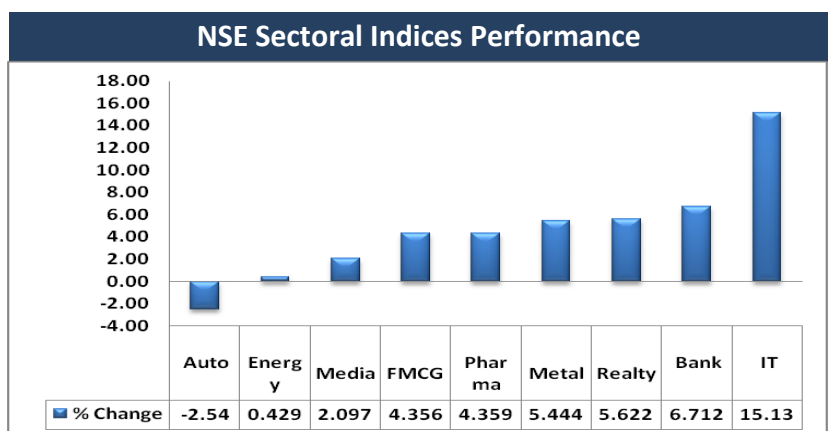
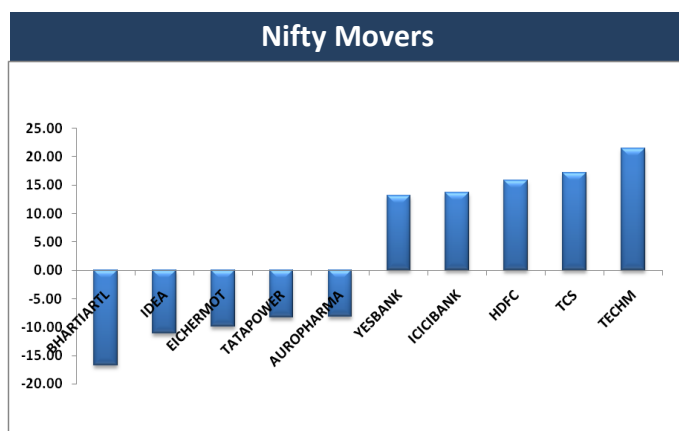
Block Deal

Exchange	Deal Date	Company	Client Name	Deal Type	Quantity	Price
NSE	31-Jan-18	APOLLO	BOI AXA MUTUAL FUND - MIDCAP EQUITY AND DEBT FUI	BUY	151000	331
NSE	31-Jan-18	EMAMIINFRA	FINETHICAL TRADING PVT LTD	BUY	150000	324
NSE	31-Jan-18	ESTER	KIFS ENTERPRISE	BUY	500000	73
NSE	31-Jan-18	JUSTDIAL	SHAASTRA SECURITIES TRADING PRIVATE LIMITED	BUY	378437	517
NSE	31-Jan-18	PODDARMENT	GKS LOGISTICS PRIVATE LIMITED	BUY	165000	300
NSE	31-Jan-18	QUESS	SUNDARAM MUTUAL FUND SUNDARAM SELECT MIDCAP	BUY	1535381	950
NSE	31-Jan-18	RCOM	SHAASTRA SECURITIES TRADING PRIVATE LIMITED	BUY	15269634	30
NSE	31-Jan-18	SPIC	Hardik Bharat Patel	BUY	2078790	44
NSE	31-Jan-18	SUPREMETEX	MADHU NEELESH KUMAR LAHOTI	BUY	610000	3
NSE	31-Jan-18	TCIFINANCE	PRIYA CHANDRAKANT JALGAONKAR	BUY	55000	36
NSE	31-Jan-18	TCIFINANCE	RONAK BANSAL	BUY	352566	35
NSE	31-Jan-18	EMAMIINFRA	EAST INDIA SECURITIES LTD.	SELL	150000	324
NSE	31-Jan-18	ESTER	GARNET INTERNATIONAL LTD	SELL	430000	73
NSE	31-Jan-18	JUSTDIAL	SHAASTRA SECURITIES TRADING PRIVATE LIMITED	SELL	378437	518
NSE	31-Jan-18	PODDARMENT	MAYUKA INVESTMENT LIMITED	SELL	168870	300
NSE	31-Jan-18	QUESS	RAMDAS MADHAVA PAI	SELL	1863008	950
NSE	31-Jan-18	QUESS	VASANTHI RAMDAS PAI	SELL	3158504	950
NSE	31-Jan-18	RCOM	SHAASTRA SECURITIES TRADING PRIVATE LIMITED	SELL	15269634	30
NSE	31-Jan-18	RPPINFRA	SURENDRA NAVNITLAL SANGHAVI	SELL	133000	299
NSE	31-Jan-18	SPIC	RUCHIT B. PATEL	SELL	2073979	44
NSE	31-Jan-18	TCIFINANCE	PRIYA CHANDRAKANT JALGAONKAR	SELL	96018	34
NSE	31-Jan-18	TCIFINANCE	RONAK BANSAL	SELL	352566	35

F&O OPEN INTEREST (Number of Contracts)



MARKET MOVERS (1 MONTH CHANGE)



Result Calendar Q3FY18

Bse Code	Company Name	Date	Bse Code	Company Name	Date
532404	7TEC	1-Feb-18	523395	3MINDIA	2-Feb-18
500710	AKZOINDIA	1-Feb-18	535755	ABFRL	2-Feb-18
500477	ASHOKLEY	1-Feb-18	532268	ACCELYA	2-Feb-18
523850	AXTEL	1-Feb-18	523411	ADCINDIA	2-Feb-18
532978	BAJAJFINSV	1-Feb-18	500003	AEGISLOG	2-Feb-18
500034	BAJFINANCE	1-Feb-18	526847	ASHSI	2-Feb-18
539607	BLUECLOUDS	1-Feb-18	505506	AXONVL	2-Feb-18
519600	CCL	1-Feb-18	531268	B2BSOFT	2-Feb-18
500878	CEATLTD	1-Feb-18	532977	BAJAJ-AUTO	2-Feb-18
532443	CERA	1-Feb-18	500490	BAJAJHLDNG	2-Feb-18
500480	CUMMINSIND	1-Feb-18	509053	BANASFN	2-Feb-18
532640	CYBERMEDIA	1-Feb-18	522004	BATLIBOI	2-Feb-18
521151	DHANFAB	1-Feb-18	506285	BAYERCROP	2-Feb-18
513452	ELANGO	1-Feb-18	524332	BCL	2-Feb-18
500135	ESSELPRO	1-Feb-18	531029	BHATEXT	2-Feb-18
536751	FIVEXTRADE	1-Feb-18	505681	BIMETAL	2-Feb-18
500150	FOSECOIND	1-Feb-18	533108	BTTL	2-Feb-18
531399	GGAUTO	1-Feb-18	533272	CEBBCO	2-Feb-18
509152	GRPLTD	1-Feb-18	502445	CITADEL	2-Feb-18
508486	HAWKINCOOK	1-Feb-18	540403	CLEDUCATE	2-Feb-18
532334	HBESD	1-Feb-18	500097	DALMIASUG	2-Feb-18
532333	HBPOR	1-Feb-18	519588	DFM	2-Feb-18
500211	INSILCO	1-Feb-18	539979	DIGJAMLTD	2-Feb-18
540775	KHADIM	1-Feb-18	526783	DRAGARWQ	2-Feb-18
524000	MAGMA	1-Feb-18	500128	ELECTCAST	2-Feb-18
540704	MATRIMONY	1-Feb-18	536507	FLFL	2-Feb-18
503015	MODERN	1-Feb-18	500153	GANESHB	2-Feb-18
500290	MRF	1-Feb-18	500155	GARDENSILK	2-Feb-18
532944	ONMOBILE	1-Feb-18	532183	GAYATRI	2-Feb-18
506579	ORIENTCQ	1-Feb-18	500660	GLAXO	2-Feb-18
502420	ORIENTPPR	1-Feb-18	533150	GODREJPROP	2-Feb-18
531626	OROSMITHS	1-Feb-18	505576	GOLDCORP	2-Feb-18
532366	PNBGILTS	1-Feb-18	509488	GRAPHITE	2-Feb-18
532898	POWERGRID	1-Feb-18	509546	GRAVISSHO	2-Feb-18
540293	PRICOLLTD	1-Feb-18	506076	GRINDWELL	2-Feb-18
532805	REDINGTON	1-Feb-18	539522	GROVY	2-Feb-18
531447	ROCKONENT	1-Feb-18	539336	GUJGAS	2-Feb-18
532699	ROHLTD	1-Feb-18	507960	GUJHOTE	2-Feb-18
532284	TCFCFINQ	1-Feb-18	532855	HARYNACAP	2-Feb-18
500114	TITAN	1-Feb-18	509073	HATHWAYB	2-Feb-18
500464	UCALFUEL	1-Feb-18	500440	HINDALCO	2-Feb-18
524576	VIVIDIND	1-Feb-18	522073	HITECHGEAR	2-Feb-18
519214	WILLIMFI	1-Feb-18	540750	IEX	2-Feb-18
532794	ZEEMEDIA	1-Feb-18	509162	INDAG	2-Feb-18
504356	ZMULTIPU	1-Feb-18	523586	INDTONER	2-Feb-18
504988	ZWELCAST	1-Feb-18	539083	INOXWIND	2-Feb-18

505100	INRADIA	2-Feb-18	512381	ZNIVEMER	2-Feb-18
511034	JINDRILL	2-Feb-18	512587	ZODJRD MKJ	2-Feb-18
532304	KJMCCORP	2-Feb-18	524208	AARTIIND	3-Feb-18
530235	KJMCFIN	2-Feb-18	530499	AKCAPIT	3-Feb-18
507912	LKPFIN	2-Feb-18	532141	ANDHRACEMT	3-Feb-18
540192	LKPSEC	2-Feb-18	539469	APUNKA	3-Feb-18
500265	MAHSEAMLES	2-Feb-18	526662	ARENTERP	3-Feb-18
514418	MANORG	2-Feb-18	511605	ARIHCAPM	3-Feb-18
538942	MERCANTILE	2-Feb-18	524695	ASIANFR	3-Feb-18
526642	MIRZAIN T	2-Feb-18	532330	BIOPAC	3-Feb-18
506261	MODISNME	2-Feb-18	531595	CGCL	3-Feb-18
500109	MRPL	2-Feb-18	507515	CJGEL	3-Feb-18
532777	NAUKRI	2-Feb-18	531460	CONTICON	3-Feb-18
524558	NEULAN DLAB	2-Feb-18	539527	CREATIVE	3-Feb-18
512626	ORBTEXP	2-Feb-18	517437	DUTRON	3-Feb-18
509782	OSEASPR	2-Feb-18	524226	GAEL	3-Feb-18
532486	POKARNA	2-Feb-18	532630	GOKEX	3-Feb-18
526043	POLYCHMP	2-Feb-18	539206	GVBL	3-Feb-18
539354	POLYSPIN	2-Feb-18	517077	INDAGIV	3-Feb-18
532460	PONNIERODE	2-Feb-18	532341	IZMO	3-Feb-18
500540	PREMIER	2-Feb-18	524330	JAYAGROGN	3-Feb-18
521149	PRIMEURB	2-Feb-18	532644	JKCEMENT	3-Feb-18
531273	RADHEDE	2-Feb-18	505750	JOSTS	3-Feb-18
530291	RAJAGRO	2-Feb-18	526409	KKALPANAIN D	3-Feb-18
524037	RAMAPHO	2-Feb-18	517206	LUMAXIND	3-Feb-18
539435	RFSL	2-Feb-18	539519	MAYUKH	3-Feb-18
532983	RPGLIFE	2-Feb-18	523792	MAZDALTD	3-Feb-18
534597	RTNINFRA	2-Feb-18	524709	NACLIND	3-Feb-18
533122	RTNPOWER	2-Feb-18	540769	NIACL	3-Feb-18
539346	SADBHIN	2-Feb-18	506532	NITTAGELA	3-Feb-18
530525	SHEETAL	2-Feb-18	526747	PGFOILQ	3-Feb-18
520086	SICAL	2-Feb-18	500459	PGHH	3-Feb-18
503229	SIMPLXREA	2-Feb-18	523642	PIIND	3-Feb-18
514454	SOUTLAT	2-Feb-18	531688	PRITHVIEXCH	3-Feb-18
503659	SW1	2-Feb-18	539359	PRITIKAUTO	3-Feb-18
532390	TAJGVK	2-Feb-18	519014	PRSNTIN	3-Feb-18
500800	TATAGLOBAL	2-Feb-18	507966	RASRESOR	3-Feb-18
513434	TATAMETALI	2-Feb-18	530517	RELAXO	3-Feb-18
500413	THOMASCOOK	2-Feb-18	533470	RUSHIL	3-Feb-18
530475	TINNARUBR	2-Feb-18	506906	SCBL	3-Feb-18
532375	TIPSINDLTD	2-Feb-18	530075	SELAN	3-Feb-18
514236	TRUPTWI	2-Feb-18	502450	SESHAPAPER	3-Feb-18
507747	TTKHEALTH	2-Feb-18	513709	SHILGRAVQ	3-Feb-18
532371	TTML	2-Feb-18	539584	SIPTL	3-Feb-18
532478	UBL	2-Feb-18	526479	SKYIND	3-Feb-18
524408	UNIVSTAR	2-Feb-18	513418	SMFIL	3-Feb-18
500238	WHIRLPOOL	2-Feb-18	508905	SMIFS	3-Feb-18
590013	XPROINDIA	2-Feb-18	522152	SOLIMAC	3-Feb-18
511601	YASHMGM	2-Feb-18	516038	SOMAPPR	3-Feb-18

524667	SOTL	3-Feb-18	531594	INCON	5-Feb-18
506105	STANROS	3-Feb-18	512405	IPOWER	5-Feb-18
519483	TAIIND	3-Feb-18	532642	JSWHL	5-Feb-18
539871	THYROCARE	3-Feb-18	511060	JUMBFNL	5-Feb-18
532477	UNIONBANK	3-Feb-18	500234	KAKATCEM	5-Feb-18
532867	V2RETAIL	3-Feb-18	533451	KARMAENG	5-Feb-18
524200	VINATIORGA	3-Feb-18	518011	KEERTHI	5-Feb-18
534392	VSSL	3-Feb-18	533302	KICL	5-Feb-18
514470	WINSOMTX	3-Feb-18	502150	KLYNCEM	5-Feb-18
507817	WIREFABR	3-Feb-18	500235	KSL	5-Feb-18
505872	WPIL	3-Feb-18	531842	LAHOTIOV	5-Feb-18
532039	ZENOTECH	3-Feb-18	526947	LAOPALA	5-Feb-18
533339	ZENTEC	3-Feb-18	514036	LOYALTEX	5-Feb-18
539661	ACEMEN	5-Feb-18	532906	MAANALU	5-Feb-18
539391	ACME	5-Feb-18	500268	MANALIPETC	5-Feb-18
523120	ADORMUL	5-Feb-18	532654	MCLEODRUSS	5-Feb-18
517041	ADORWELD	5-Feb-18	522241	MMFL	5-Feb-18
506767	ALKYLAMINE	5-Feb-18	533080	MOLDTKPAC	5-Feb-18
530799	ANNAINFRA	5-Feb-18	539819	MUDRA	5-Feb-18
540616	ARTEMIS	5-Feb-18	508670	NEAGI	5-Feb-18
513401	ASHIS	5-Feb-18	530733	NOVAPUB	5-Feb-18
540788	ASPIRA	5-Feb-18	504378	NYSSACORP	5-Feb-18
506820	ASTRAZEN	5-Feb-18	533317	OMKARCHEM	5-Feb-18
540649	AVADHSUGAR	5-Feb-18	524820	PANAMAPET	5-Feb-18
519105	AVTNPL	5-Feb-18	503031	PENINLAND	5-Feb-18
500042	BASF	5-Feb-18	506605	POLYCHEM	5-Feb-18
500530	BOSCHLTD	5-Feb-18	540717	PQIF	5-Feb-18
532548	CENTURYPLY	5-Feb-18	514354	PREMIERPOL	5-Feb-18
540310	CFL	5-Feb-18	509220	PTL	5-Feb-18
521210	CITYMAN	5-Feb-18	532441	RAINBOWDQ	5-Feb-18
540678	COCHINSHIP	5-Feb-18	506975	RAJSPTR	5-Feb-18
500830	COLPAL	5-Feb-18	500354	RAJSREESUG	5-Feb-18
508814	COSMOFILMS	5-Feb-18	532826	RAJTV	5-Feb-18
526821	DAICHI	5-Feb-18	500358	RAMAPETRO	5-Feb-18
532700	ENIL	5-Feb-18	530271	RICHUNV	5-Feb-18
531508	EVEREADY	5-Feb-18	515043	SAINTGOBAIN	5-Feb-18
508954	FINKURVE	5-Feb-18	520075	SAMKRG	5-Feb-18
530023	FORTUNEF	5-Feb-18	530617	SAMPRE	5-Feb-18
540647	GANGESSEC	5-Feb-18	538992	SAPL	5-Feb-18
531608	GORANIN	5-Feb-18	540203	SFL	5-Feb-18
501455	GREAVESCOT	5-Feb-18	531290	SHDYECH	5-Feb-18
523836	GUJRAFIA	5-Feb-18	530295	SHRAJOI	5-Feb-18
506879	GUJTHEM	5-Feb-18	505515	SHYMINV	5-Feb-18
538652	HCLTD	5-Feb-18	512131	SIGNETIND	5-Feb-18
503881	HINDSYNTEX	5-Feb-18	540679	SMSLIFE	5-Feb-18
540530	HUDCO	5-Feb-18	538943	SONAL	5-Feb-18
500106	IFCI	5-Feb-18	519242	SRDAPRT	5-Feb-18
517380	IGARASHI	5-Feb-18	532879	SSLEL	5-Feb-18

501110	SUNRINV	5-Feb-18	523672	FLEXFO	6-Feb-18
500570	TATAMOTORS	5-Feb-18	509550	GAMMONIND	6-Feb-18
570001	TATAMTRDVR	5-Feb-18	513108	GANDHITUBE	6-Feb-18
534369	TBZ	5-Feb-18	512443	GANONTR	6-Feb-18
501242	TCIFINANCE	5-Feb-18	532764	GEECEE	6-Feb-18
530199	THEMISMED	5-Feb-18	530263	GLOBALCA	6-Feb-18
504973	TIFHL	5-Feb-18	505255	GMM	6-Feb-18
522113	TIMKEN	5-Feb-18	509024	GOLDLEG	6-Feb-18
506808	TUTIALKA	5-Feb-18	538979	GRNLAMIND	6-Feb-18
539874	UJJIVAN	5-Feb-18	500690	GSFC	6-Feb-18
506690	UNICHEMLAB	5-Feb-18	500160	GTL	6-Feb-18
526799	UNQTYMI	5-Feb-18	530001	GUJALKALI	6-Feb-18
517146	USHAMART	5-Feb-18	538567	GULFOILLUB	6-Feb-18
522267	VJLAXMIE	5-Feb-18	519552	HERITGFOOD	6-Feb-18
533452	WEIZFOREX	5-Feb-18	500182	HEROMOTOCO	6-Feb-18
505533	WESTLIFE	5-Feb-18	526683	HOTELRUGBY	6-Feb-18
507892	WINSOMEDJ	5-Feb-18	504731	IBRIGST	6-Feb-18
511642	WISec	5-Feb-18	531314	INTCAPM	6-Feb-18
506178	ZKHATAUE	5-Feb-18	536868	INTELSOFT	6-Feb-18
532682	ABGSHIP	6-Feb-18	530519	INTERFAC	6-Feb-18
540025	ADVENZYMES	6-Feb-18	505737	INTLCOMBQ	6-Feb-18
532774	AFL	6-Feb-18	538422	JACKSON	6-Feb-18
532683	AIAENG	6-Feb-18	507981	JINDHOT	6-Feb-18
535467	AIFL	6-Feb-18	530049	JJEXPO	6-Feb-18
532633	ALLSEC	6-Feb-18	523062	JJFINCOR	6-Feb-18
531681	AMARDEE	6-Feb-18	536493	JK AGRI	6-Feb-18
531991	AMRAAGRI	6-Feb-18	533148	JSWENERGY	6-Feb-18
523537	APMIN	6-Feb-18	526668	KAMATHOTEL	6-Feb-18
500877	APOLLOTYRE	6-Feb-18	590130	KANCOTEA	6-Feb-18
531847	ASTAR	6-Feb-18	506938	KAPPH	6-Feb-18
512195	BENTCOM	6-Feb-18	532714	KEC	6-Feb-18
509480	BERGEPAIN	6-Feb-18	519602	KELLTONTEC	6-Feb-18
539662	BFLAFL	6-Feb-18	505890	KENNAMET	6-Feb-18
535620	BINNYMILLS	6-Feb-18	535730	KHOBSURAT	6-Feb-18
500060	BIRLACABLE	6-Feb-18	511138	KOTHARIFIN	6-Feb-18
500067	BLUESTARCO	6-Feb-18	532889	KPRMILL	6-Feb-18
539304	CANOPYFIN	6-Feb-18	533007	LGBFORGE	6-Feb-18
500870	CASTROLIND	6-Feb-18	539992	LLOYDSTEEL	6-Feb-18
500280	CENTENKA	6-Feb-18	533012	LPDC	6-Feb-18
530191	CHROMATIC	6-Feb-18	500257	LUPIN	6-Feb-18
533288	CLARIS	6-Feb-18	540650	MAGADHSUGAR	6-Feb-18
530843	CUPID	6-Feb-18	532525	MAHABANK	6-Feb-18
539596	DELTA	6-Feb-18	524084	MONSANTO	6-Feb-18
500089	DICIND	6-Feb-18	511549	MORARKFI	6-Feb-18
506414	DIL	6-Feb-18	524816	NATCOPHARM	6-Feb-18
532839	DISHTV	6-Feb-18	504112	NELCO	6-Feb-18
523708	EIMCOELECO	6-Feb-18	531272	NIKKIGL	6-Feb-18
511716	ESCORTSFIN	6-Feb-18	500307	NIRLON	6-Feb-18

532481	NOIDATOLL	6-Feb-18
532466	OFSS	6-Feb-18
511644	OMEGAIN	6-Feb-18
540648	PALASHSEC	6-Feb-18
532911	PARLESOFT	6-Feb-18
500327	PILITA	6-Feb-18
524210	PNTKYOR	6-Feb-18
532626	PONDYOXIDE	6-Feb-18
522205	PRAJIND	6-Feb-18
526801	PSL	6-Feb-18
531562	PUSHPIN	6-Feb-18
539814	RADHEY	6-Feb-18
500260	RAMCOCEM	6-Feb-18
532369	RAMCOIND	6-Feb-18
505800	RANEHOLDIN	6-Feb-18
532955	RECLTD	6-Feb-18
531539	RISHDIGA	6-Feb-18
503635	SALSAIN	6-Feb-18
539252	SCFL	6-Feb-18
524727	SDL	6-Feb-18
509423	SEL	6-Feb-18
512297	SHANTAI	6-Feb-18
522034	SHANTIGEAR	6-Feb-18
530797	SHGANEL	6-Feb-18
500550	SIEMENS	6-Feb-18
538562	SKIPPER	6-Feb-18
532143	SKMEGGPROD	6-Feb-18
505827	SNL	6-Feb-18
500285	SPICEJET	6-Feb-18
540575	STARCEMENT	6-Feb-18
507785	TAINWALCHM	6-Feb-18
533170	TAMBOLI	6-Feb-18
505685	TAPARIA	6-Feb-18
519091	TASTYBIT	6-Feb-18
500770	TATACHEM	6-Feb-18
500411	THERMAX	6-Feb-18
500777	TNPETRO	6-Feb-18
512117	TWIROST	6-Feb-18
531091	UNITDCR	6-Feb-18
512511	VARUNME	6-Feb-18
517015	VINDHYATEL	6-Feb-18
509026	VJTFEDU	6-Feb-18
502986	VTL	6-Feb-18
590073	WHEELS	6-Feb-18
519224	WILLAMAGOR	6-Feb-18
512017	ZEXDONTR	6-Feb-18
512367	ZSHERAPR	6-Feb-18
512291	ZSPEEDCO	6-Feb-18
530431	ADORFO	7-Feb-18

522273	AHMDSTE	7-Feb-18
526397	ALPHAGEO	7-Feb-18
526433	ASMTEC	7-Feb-18
530233	AUROLAB	7-Feb-18
524804	AUOPHARMA	7-Feb-18
509009	AUSOMENT	7-Feb-18
507944	BAJAJST	7-Feb-18
511724	BALFC	7-Feb-18
524828	BDH	7-Feb-18
500048	BEML	7-Feb-18
533095	BENGALASM	7-Feb-18
532930	BGREENERGY	7-Feb-18
524370	BODALCHEM	7-Feb-18
524742	CAPPL	7-Feb-18
500087	CIPLA	7-Feb-18
513353	COCHINM	7-Feb-18
523100	COSMOFE	7-Feb-18
532210	CUB	7-Feb-18
533309	DALMIABHA	7-Feb-18
539770	DARJEELING	7-Feb-18
540699	DIXON	7-Feb-18
505200	EICHERMOT	7-Feb-18
500125	EIDPARRY	7-Feb-18
505700	ELECON	7-Feb-18
522027	EMAINDIA	7-Feb-18
500133	ESABINDIA	7-Feb-18
500650	EXCELINDUS	7-Feb-18
531599	FDC	7-Feb-18
500142	FGP	7-Feb-18
507910	FIBERWEB	7-Feb-18
505744	FMGOETZE	7-Feb-18
532809	FSL	7-Feb-18
534063	FUTSOL	7-Feb-18
532345	GATI	7-Feb-18
506186	GLXYENT	7-Feb-18
532957	GOKAKTEX	7-Feb-18
532980	GOKUL	7-Feb-18
526797	GREENPLY	7-Feb-18
514386	GUJCOTEX	7-Feb-18
524080	HARLETH	7-Feb-18
517271	HBLPOWER	7-Feb-18
532129	HEXAWARE	7-Feb-18
509895	HINDMILL	7-Feb-18
526761	HOWARHO	7-Feb-18
532835	ICRA	7-Feb-18
532514	IGL	7-Feb-18
506945	IGLFXPL-B	7-Feb-18
505539	IMCFINA	7-Feb-18
532100	INDOCITY	7-Feb-18

Earning Estimate Q3FY18

BSE CODE	NSE CODE	Sales Rs Cr	Sales YoY	Pat Rs Cr	PAT YoY
31-Jan-18	APLLTD	800	3.90	94	9.00
31-Jan-18	ARVIND	2676	14.60	77	(1.10)
31-Jan-18	DABUR	2069	12.00	360	22.40
31-Jan-18	EQUITAS	240	4.60	15	(65.90)
31-Jan-18	ESCORT	1246	14.00	75	35.50
31-Jan-18	EXIDEIND	1986	15.10	135	(10.90)
31-Jan-18	ICICIBANK	5847	9.00	2225	(8.90)
31-Jan-18	JSWSTEEL	17144	22.30	1598	118.80
31-Jan-18	LT	28950	10.10	1430	47.00
31-Jan-18	NTPC	19960	2.90	2706	20.60
31-Jan-18	PVR	618	15.00	40	68.70
31-Jan-18	VEDL	23203	19.50	2412	29.20
1-Feb-18	ASHOKLEY	6948	53.80	402	148.70
1-Feb-18	BAJAJFINSV	5563	22.70	224	24.00
1-Feb-18	CUMMINSIND	1431	5.60	210	6.00
1-Feb-18	POWERGRID	7179	10.40	2167	12.30
1-Feb-18	TITAN	4605	20.00	326	28.70
2-Feb-18	UBL	1189	16.00	67	31.40
2-Feb-18	BAJAJ-AUTO	6211	22.60	1053	13.90
2-Feb-18	GLAXO	786	14.00	108	207.80
2-Feb-18	HINDALCO	27977	15.20	1120	278.20
2-Feb-18	MRPL	13275	15.70	597	5.50
2-Feb-18	NAUKRI	226	21.40	69	46.40
3-Feb-18	JKCEMENT	1126	26.80	72	9.40
3-Feb-18	PGHH	766	19.00	153	1.80
3-Feb-18	PIIND	600	20.00	97	3.20
3-Feb-18	UNIONBANK	2412	12.90	123	18.10

Result Q3FY18

BSE CODE	NSE CODE	Sales Rs Cr	Sales YoY	Pat Rs Cr	PAT YoY
505036	AUTOCORP	113	4.27	5	2.67
502865	FORBESGOK	64	40.97	7	(34.42)
502180	SHREDIGCEM	100	59.06	4	(165.74)
503811	SIYSIL	394	15.65	22	64.08
590071	SUNDARMFN	677	14.76	126	(8.81)
532262	TRANSCORP	0	192.86	(0)	(83.33)
505854	TRF	259	16.74	(24)	(3.11)
506222	STYABS	453	43.87	14	164.02
502090	Sagar Cements	249	30.41	3	(657.41)
508933	AYMSYNTEX	227	27.87	3	(48.26)
512393	SHRIYAMSEC	2	(118.28)	1	(110.54)
511333	VLSFINANCE	497	46.62	6	157.32
521064	TRIDENT	1137	1.46	73	(7.08)
500405	SUPPETRO	721	5.02	28	(21.01)
511473	INDBANK	3	51.03	2	168.97
507514	SDBL	65	50.11	4	124.56
516108	SIPAPER	52	1.11	3	17.07

530185	SURATEX	57	37.73	2	(54.09)
530393	DBSTOCKBRO	2	369.23	1	757.14
530803	BHAGERIA	90	18.36	15	126.67
512493	GARNETINT	155	1207.58	3	118.54
532300	WOCKPHARMA	1005	0.98	(43)	(29.60)
532348	SUBEX	86	(9.76)	4	(83.99)
590078	MAITHANALL	549	72.60	78	17.61
532156	VAIBHAVGBL	463	13.64	46	77.23
532755	TECHM	7776	2.89	924	9.41
532527	RKFORGE	400	88.61	28	1314.80
532886	SELMCL	159	(55.83)	(223)	(1211.91)
532872	SPARC	19	(15.75)	(58)	(12.04)
533227	AHLEAST	31	18.47	6	30.40
533265	GALLANTT	184	34.13	8	(1.69)
533263	GREENPOWER	56	1.45	(51)	(26.67)
540212	TCIEXP	229	22.08	15	53.74
508941	PANCARBON	11	(2.28)	4	(0.28)
523127	EIHAHOTELS	85	0.58	20	(5.17)
533158	THANGAMAYL	315	(4.51)	4	1005.26
500730	NOCIL	249	40.58	8	(69.85)
500233	KAJARIACER	661	9.25	53	(3.63)
500171	GHCL	717	16.25	71	(11.63)
532212	ARCHIES	44	(11.97)	1	807.14
500096	DABUR	1966	6.13	306	4.01
533573	APLLTD	840	8.11	131	50.91
500414	TIMEXWATCH	50	(7.56)	(0)	(98.34)
531633	LINCOPH	80	10.82	12	78.83
533088	MHRIL	268	7.96	32	(11.81)
506590	PHILIPCARB	612	26.15	57	196.65
513605	Srikalahasthi Pipes	386	32.36	39	(1.55)
500495	ESCORTS	1205	10.56	92	304.98
532689	PVR	547	3.10	28	18.38
500101	ARVIND	2705	15.82	79	7.91
504258	LAKSELECON	38	(0.73)	2	10.75
500119	DHAMPURSUG	778	16.26	64	13.78
500086	EXIDEIND	2276	31.92	158	4.50
500185	HCC	1230	30.28	31	586.62
513599	HINDCOPPER	491	122.88	19	12.15
507438	IFBAGRO	349	24.34	10	2.12
500228	JSWSTEEL	17669	28.06	1774	147.86
500510	LT	17715	11.09	1157	23.85
520043	MUNJALSHOW	356	8.63	11	(21.91)
539551	NH	461	16.44	18	4.24
500730	NOCIL	250	40.83	45	76.56
532555	NTPC	20774	7.10	2327	(2.10)
500390	RELINFRA	5225	(6.09)	235	(19.80)
500295	VEDL	24361	25.47	2959	(5.94)
531147	ALICON	256	47.70	10	100.20
507525	AMRITCORP	13	7.71	8	1126.56

500023	ASIANHOTNR	78	14.00	15	(325.94)
534758	CIGNITI	177	13.10	13	(153.76)
506395	COROMANDEL	2707	21.67	170	51.84
532309	GEPIL	365	(54.53)	(42)	(134.67)
500179	HCL-INSYS	1310	71.28	(61)	20.70
509631	HEG	843	258.31	342	(10922.78)
513599	HINDCOPPER	491	122.88	18	6.16
532636	IIFL	1612	26.89	236	31.65
502330	IPAPPM	328	0.99	20	(5.95)
500380	JKLAKSHMI	837	24.82	9	13.03
500228	JSWSTEEL	16299	18.13	1410	97.00

Economic Calendar

Country	Monday 29th Jan 18	Tuesday 30th Jan 18	Wednesday 31th Jan 18	Thursday 1st Feb 18	Friday 2nd Feb 18
US	Core PCE Price Index m/m , Personal Spending m/m, Personal Income m/m	S&P/CS Composite-20 HPI y/y , CB Consumer Confidence	Challenger Job Cuts y/y , Employment Cost Index q/q , Chicago PMI , Pending Home Sales m/m , Crude Oil Inventories , FOMC Statement , Federal Funds Rate	ADP Non-Farm Employment Change , Unemployment Claims , Prelim Nonfarm Productivity q/q , Prelim Unit Labor Costs q/q , Final Manufacturing PMI , ISM Manufacturing PMI , Construction Spending m/m , ISM Manufacturing Prices , Natural Gas Storage , Total Vehicle Sales.	Average Hourly Earnings m/m , Non-Farm Employment Change, Unemployment Rate , Factory Orders m/m
UK/EURO ZONE	French Consumer Spending m/m	German Retail Sales m/m , French Prelim CPI m/m , Spanish Flash CPI y/y , Italian Monthly Unemployment Rate , Net Lending to Individuals m/m ,Prelim Flash GDP q/q , 10-y Bond Auction	CPI Flash Estimate y/y , Core CPI Flash Estimate y/y, Unemployment Rate, French Flash GDP q/q	Manufacturing PMI , Spanish Manufacturing PMI , Italian Manufacturing PMI , French Final Manufacturing PMI , German Final Manufacturing PMI , Final Manufacturing PMI	Construction PMI , PPI m/m
INDIA				Auto sales No , Niekki Manufacturing PMI no & Union Budget	



Narnolia Securities Ltd

201 | 2nd Floor | Marble Arch Building | 236B-AJC Bose
Road | Kolkata-700 020 , Ph : 033-40501500

email: narnolia@narnolia.com,
website : www.narnolia.com

Risk Disclosure & Disclaimer: This report/message is for the personal information of the authorized recipient and does not construe to be any investment, legal or taxation advice to you. Narnolia Securities Ltd. (Hereinafter referred as NSL) is not soliciting any action based upon it. This report/message is not for public distribution and has been furnished to you solely for your information and should not be reproduced or redistributed to any other person in any form. The report/message is based upon publicly available information, findings of our research wing "East wind" & information that we consider reliable, but we do not represent that it is accurate or complete and we do not provide any express or implied warranty of any kind, and also these are subject to change without notice. The recipients of this report should rely on their own investigations, should use their own judgment for taking any investment decisions keeping in mind that past performance is not necessarily a guide to future performance & that the the value of any investment or income are subject to market and other risks. Further it will be safe to assume that NSL and /or its Group or associate Companies, their Directors, affiliates and/or employees may have interests/ positions, financial or otherwise, individually or otherwise in the recommended/mentioned securities/mutual funds/ model funds and other investment products which may be added or disposed including & other mentioned in this report/message.