

SGX NIFTY : 7049 (42 Pt Up)

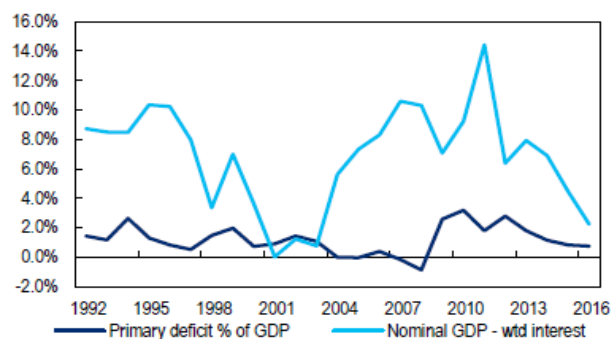
Quote of the Day

"An argument is made that there are just too many question marks about the near future; wouldn't it be better to wait until things clear up a bit?...face up to two unpleasant facts: The future is never clear [and] you pay a very high price for a cheery consensus. Uncertainty actually is the friend of the buyer of long term values."

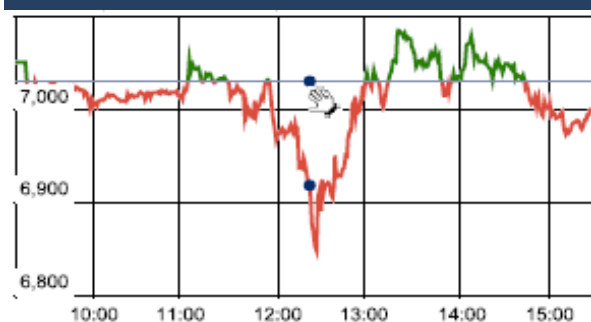
Warren Buffett

Chart of the Day

GDP Trend



Index Action Nifty (29th Feb 16)



Index

Contents	Page	Coverage
News	2	Update
Economic Calendar	3	Update

Market

Name	Value	Change
Sensex	23,002.00	(152.30)
Nifty	6987.05	(42.70)
DOW	16,639.97	-57.32
NASDAQ	4,557.95	-35.52
CAC	4,353.55	38.98
DAX	9,495.40	(17.90)
FTSE	6,097.09	1.08
NIKKEI	15,916.84	-109.92
HANG SENG	19,214.85	106.31
EW ALL SHARE	1215.05	47.17

Instituional Turnover

FII

Investor	Buy(Cr.)	Sale(Cr.)	Net(Cr.)
26-Feb-16	8321.34	10339.36	(2018.02)
Feb,16	71645.54	83501.73	(11856.19)
2016	143137.46	169349.66	(26212.20)

DII

Investor	Buy(Cr.)	Sale(Cr.)	Net(Cr.)
26-Feb-16	2856.36	1411.11	1445.25
Feb,16	40210.50	28857.42	11353.08
2016	81914.97	57464.20	24450.77

Commodity Price

Commodity/Currencies	Value	
GOLD	29509.00	↓
SILVER	36167.00	↓
CRUDEOIL	32.16	↑
COPPER	324.65	↓
NATURALGAS	118.50	↓
DOLLAR/RS.	68.43	↓
EURO/RS.	74.21	↑
POUND/RS.	95.05	↑

Market Snapshot

Top Price Performers

Top Performers 1D	% Change	Top Performers 1W	% Change	Top Performers 1M	% Change
LLOYDMETAL	13.03	AMTEKINDIA	28.57	LLOYDMETAL	53.18
SHAKTIPUMP	12.55	PGEL	20.59	RAMKY	41.18
PIIND	12.06	LPDC	17.10	RUSHIL	37.49
ENERGYDEV	11.87	LLOYDMETAL	16.13	NDTV	36.80
PRIMEPRO	11.22	GDL	12.46	INFODRIVE	28.95

Worst Performers 1D	% Change	Worst Performers 1W	% Change	Worst Performers 1M	% Change
BIRLACOT	(20.00)	TWL	(35.41)	PDUMJEPULP	(65.42)
CALSREF	(14.29)	KALINDEE	(31.00)	STCINDIA	(43.98)
MCDHOLDING	(10.73)	TEXRAIL	(30.46)	FOURSOFT	(43.88)
MARKSANS	(9.92)	PRICOL	(23.82)	GEMINI	(43.85)
ONGC	(9.72)	STCINDIA	(22.71)	MARKSANS	(43.63)

Top News

• FM Jaitley presents Budget 2016

- > FM says: Global eco in a serious crisis; global growth has slowed, fin mkts battered
- > Lot Of Hope and Confidence Being Built Around India, says FM
- > FM says: Global eco is in a serious crisis
- > Finance Minister Says : Global Economy Has Slowed From 3.4% In 2014 To 3.1% In 2015.
- > CPI inflation has come down to 5.4% under our government, despite two poor monsoons
- > GDP growth accelerated to 7.4%: FM Arun Jaitley
- > Increase plan expenditure for FY16: FM
- > To Make Provision For Bank Recap, Farm & Social Sector In FY17: FM
- > Priority To Provide Addl Resource To Vulnerable Sections In Rural Areas:
- > Priority To Provide Addl Resource To Vulnerable Sections In Rural Areas
- > Focus to pass GST, bankruptcy code: FM
- > Budget focus on tax reforms to reduce burden of compliance
- > Govt to make provision for bank recap in FY17
- > To enact law to give statutory backing to Aadhaar: FM
- > Proposed to double farmers' income in 5 years: FM
- > Allocation to farming sector at Rs 35,984 cr
- > Allocation for Accelerated Irrigation Benefits Programme at Rs 17,000 cr for FY17.
- > To set up e-platform to enhance farmer access to markets: FM
- > Rs 19000 crore allotted for PMGSY: FM
- > Soil health card scheme to be implemented with greater vigour, all 14,000 crore Farms to be included under it by 2017:
- > Propose `5,500 cr for crop insurance scheme for FY17: FM
- > Propose `2.87 lakh cr as grants to rural local bodies in FY17: FM
- > 4 new schemes to enhance dairy farming in India at Rs 850 cr; Positive for Prabhat Dairy
- > 368 cr provided for National soil health and fertility program: FM
- > 28.5 lk hectares to be brought under PM's Krishi Sinchai Yojana: FM
- > Additional 30,000 cr coverage go be provided for senior citizens above 60 years: FM
- > Additional 30,000 cr coverage go be provided for senior citizens above 60 years: FM

- > 3000 Stores For Generic Drugs Will Be Opened In FY17: FM
- > To pay 8.33% for new employees towards EPFO contribution for 3 years: FM
- > 75 lk households have voluntarily given up cooking gas subsidy: FM
- > Allocate 55,000 cr for roads highways; excl 15,000 cr nhai bonds: FM
- > Necessary amendments to open up road transport for passenger seg: FM
- > Mission to provide LPG gas connection to women household members; Positive for Aegis Logistics
- > Calibrated market prices for gas based on landed price of alt fuels: FM
- > Propose to develop 10 of 25 non-functional airstrips: FM
- > Gram Sadak Yojana, irrigation focus positive for construction companies
- > Propose 31,300 cr of infra bonds to be issued by various agencies: FM
- > Propose further FDI reforms for stock exchanges, ins, pension: FM
- > RBI act to be amended to provide framework for monetary policy code: FM
- > CRISIL View: Significant focus on roads visible in the nearly Rs 1 lakh crore outlay
- > Bankruptcy code to be introduced in parliament in FY17: FM
- > Approve 10K Km of National Highways in FY17: FM
- > Abolition of permit raj to be our medium term goal: FM
- > 100% FDI through FIPB route in marketing of food products marketing will be allowed: FM
- > Comprehensive framework to deal with CIS schemes: FM
- > 15.3% increase in plan expenditure to to Rs 5.5 lk crore: FM
- > Total resources allocated to states 99681 cr more than 2015-16 RE: FM
- > Department of Disinvestment to be renamed as Department of Investment and Public Asset Management: FM
- Raise personal I-T house rent exemption to 60,000 from 24,000/yr: FM

Economic Calendar

Country	Monday 29th Feb 16	Tuesday 1st Mar 16	Wednesday 2th Mar 16	Thursday 3th Mar 16	Friday 4th Mar 16
US	Chicago PMI, Pending Home Sales m/m	ISM Manufacturing PMI , Construction Spending m/m.	Crude Oil Inventories, Beige Book,	Challenger Job Cuts y/y , Unemployment Claims , Revised Nonfarm Productivity q/q, ISM Non-Manufacturing PMI.	Average Hourly Earnings m/m , Non-Farm Employment Change , Trade Balance , Unemployment Rate.
UK/EURO ZONE	CPI Flash Estimate y/y , Core CPI Flash Estimate y/y, German Retail Sales m/m	Manufacturing PMI , German Unemployment Change , Spanish Manufacturing PMI	Construction PMI, Spanish Unemployment Change , MPC Member Cunliffe Speaks	Halifax HPI m/m , Services PMI,	Retail PMI.
INDIA	Union Budget	Auto sales No , HSBC Manufacturing PMI No	Auto Sales no		

Narnolia Research Lab

Stellar IT Park | 5th Floor | Office Space No. 6 | Tower-I/Ind Plot No. C-25 | Sector-62
| Noida | Ph : 0120-4215110

Central Strategy Desk - Kolkata

124 | 1st Floor | 7/1 Lords Sinha Road | Kolkata - 71
Ph : 033-22821500 | M : 93347 14418, 98302 69810