

SGX NIFTY : 8454 ( 25 Pt Down )

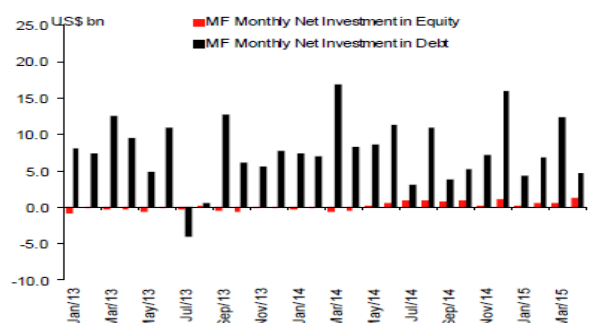
**Quote of the Day**

""Long ago, Sir Isaac Newton gave us three laws of motion, which were the work of genius. But Sir Isaac's talents didn't extend to investing: He lost a bundle in the South Sea Bubble, explaining later, 'I can calculate the movement of the stars, but not the madness of men.' If he had not been traumatized by this loss, Sir Isaac might well have gone on to discover the Fourth Law of Motion: For investors as a whole, returns decrease as motion increases."

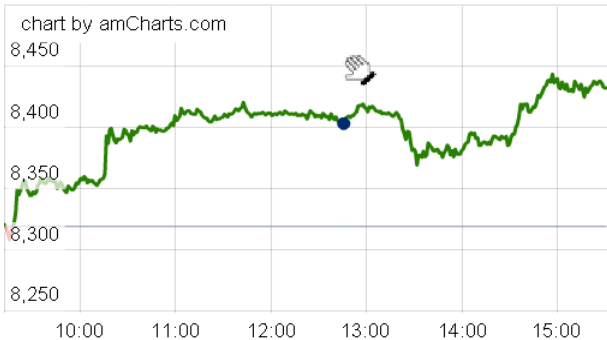
Warren Buffett

**Chart of the Day**

**Mutual Fund Trend**



**Index Action Nifty ( 29th Apr 15 )**



**Index**

Contents	Page	Coverage
News	2	Update
Economic Calendar	4	Update
Result Q4FY15	3 to 4	Update

**Market**

Name	Value	Change
Sensex	27,828.44	321.13
Nifty	8433.65	114.65
DOW	18,010.86	(115.44)
NASDAQ	5,070.02	(27.96)
CAC	5,007.86	(129.86)
DAX	11,413.82	(263.73)
FTSE	6,984.43	(56.49)
NIKKIE	20,476.53	(86.62)
HANG SENG	27,493.05	68.86
EW ALL SHARE	14498.13	172.52

**Instituional Turnover**

**FII**

Investor	Buy(Cr.)	Sale(Cr.)	Net(Cr.)
29th May,15	24676.01	22391.71	2284.30
May,15	72165.58	77707.56	(5541.98)
2015	501902.68	475647.69	26254.99

**DII**

Investor	Buy(Cr.)	Sale(Cr.)	Net(Cr.)
29th May,15	3198.78	5466.66	(2267.88)
May,15	30394.31	20945.51	9448.80
2015	188078.71	173093.14	14985.57

**Commodity Price**

Commodity/Currencies	Value	
GOLD	26860.04	↓
SILVER	38349.00	↑
CRUDEOIL	59.88	↓
COPPER	386.66	↓
NATURALGAS	169.60	↓
DOLLAR/RS.	63.81	↑
EURO/RS.	69.81	↓
POUND/RS.	97.84	↑

## Market Snapshot

### Top Price Performers

Top Performers 1D	% Change	Top Performers 1W	% Change	Top Performers 1M	% Change
REMIMETAL	19.93	RUPA	57.82	RUPA	97.20
PRAJIND	19.93	CHENNPETRO	29.88	VAARAD	76.19
ARSSINFRA	19.85	GLOBALVECT	29.76	AMTEKINDIA	63.48
ELPROINTL	19.60	FORTISFIN	29.08	VARUNSHIP	62.87
TUNITEX	14.29	KGL	29.06	JUBLINDS	56.39

### Worst Price Performers

Worst Performers 1D	% Change	Worst Performers 1W	% Change	Worst Performers 1M	% Change
REISIXTEN	(19.57)	BHAGWATIHO	(27.72)	HANUNG	(61.14)
PUNJABCHEM	(12.64)	REISIXTEN	(22.92)	OUTCTYTRVL	(54.68)
PRADIP	(12.57)	INFINITE	(22.17)	3IINFOTECH	(53.85)
SIMPLEX	(12.50)	EUROCERA	(22.01)	BHAGWATIHO	(49.44)
KOHINOOR	(12.18)	PFS	(21.78)	SVCRES	(43.72)

## Top News

• **Container Corporation Mgt Guideline** : Company reported subdued results due to sluggishness in the domestic segment . On the domestic front, the Railways hiked haulage charges. To make matters worse for Concor, diesel prices fell, allowing road transporters to under cut on freight rates. Mgt said that Iron ore is not moving; thousands of trucks are available and they go at very cheap prices because they are not getting anything to move

The company is more hopeful for the current year. For FY16, the company's investment target is Rs 1,200 crore. It is also aiming for a 12-13% investment growth.

• **Zee Entertainment Mgt Guideline** : Company is confident of beating the expected industry growth rate of 11-12 percent "on the back of market share gains and a bigger content line-up . Company is seeing good traction in recent launches such as & TV and Zindagi . Mgt expects subscription revenue to pick up further once phase three digitization was rolled out across the country by December this year.

• **Praj Industries Mgt Guideline** : Company's ' carry forward order book has grown by almost 30 percent . The company had booked orders worth Rs 1,200 crore last year out of which 43 percent were from international customers . Praj has planned to shorten the project cycle for Uganda orders and is well in progress .

• **NMDC Mgt Guideline** : Company has a capex plan of Rs 3000 crore for steel plants this year . NMDC had recorded sales volume of 30.5 metric tones last year . NMDC has not made any provisions for payment to District Mineral Fund (DMF) so far . FY16 definitely Company has a target of production of 35 million tonne and sales of 38 million tonne.

• **Mahindra Lifespace Developers** have tied up with Japan's Sumitomo Corporation to set up an industrial park in Chennai.

This is the company's third industrial park. The 700 acre project, based in Chennai, is expected to be launched in FY17. The developers are all set to start with the first phase of the project. For the second phase, they are looking at different parts of the country as well.

• **Coal India Mgt Guideline** : Company will try to maintain its 26-30 percent EBITDA margins in the current financial year too.

• **Phoenix Mills Ltd** 's wholly owned subsidiary, Pallazzio Hotels & Leisure Limited (Pallazzio) has entered into definitive agreements with Starwood Hotels & Resorts Private Limited and its affiliates (Starwood) for the management and operation of Pallazzio's hotel at Lower Parel, Mumbai.

• **Wockhardt** is hopeful of early resolution of the issues with the US Food and Drug Administration (FDA), which has hit company's performance severely over the past few quarters.

• **Infosys** Receives the Highest Product Score in 'Gartner Critical Capabilities for International Retail Core Banking' Report .

• **Instituto Brasileiro de Geografia e Estatistica** said that Brazil Debt-to-GDP ratio rose to 33.8%, from 33.1% in the preceding month. Analysts had expected Brazil Debt-to-GDP ratio to rise 33.0% last month.

• **University of Michigan** said that consumer sentiment rose to a seasonally adjusted 90.7, from 88.6 in the preceding month . Analysts had expected UoM consumer sentiment to rise to 89.9 last month.

• **Bureau of Economic Analysis** said that **U.S. GDP price** index fell to a seasonally adjusted annual rate of -0.1%, from -0.1% in the preceding quarter. Analysts had expected U.S. GDP price index to fall -0.1% in the last quarter.

• **Indian GDP** remained unchanged at a seasonally adjusted 7.5%, from 7.5% in the preceding quarter. Analysts had expected Indian GDP to fall to 7.3% last quarter.

• **European Central Bank** said that Euro Zone Private Sector Lending fell to 0.0%, from 0.1% in the preceding month. Analysts had expected Euro Zone Private Sector Lending to rise to 0.2% last month.

## Result Q4FY15

NSE CODE	BSE CODE	SALES Rs (cr.)	SALES YOY	PAT Rs Cr	PAT YOY
ONGC	500312	21467.00	35.90	3935.00	(19.51)
NAVNETEDUL	508989	183.40	(2.70)	15.60	(4.12)
KOHINOOR	512559	296.20	(28.50)	(85.20)	(1070.33)
AUROPHARMA	524804	3162.10	35.70	403.60	(19.60)
GMDCLTD	532181	400.50	(8.80)	235.00	22.50
PHOENIXLTD	503100	398.00	14.10	(53.80)	(382.60)
RECLTD	532955	5333.40	20.10	1096.40	(8.00)
CUMMINSIND	500480	1133.55	16.70	190.40	34.28
CROMPGREAV	500093	3808.00	0.10	(198.50)	(411.00)
DISHMAN	532526	423.70	3.50	38.70	71.30
HINDPETRO	500104	44615.00	(30.50)	2162.00	(53.09)
BGREENERGY	532930	1047.50	29.00	18.80	(1.52)
AKZOINDIA	500710	592.20	(3.20)	44.60	(18.42)
AVTNPL	519105	60.26	(10.20)	15.23	34.90
BOSCHLTD	500530	2388.86	(2.50)	287.55	(11.87)
M&M	500520	9557.01	(13.10)	550.56	(38.61)
LOVABLE	533343	25.25	12.10	1.32	149.06
BEL	500049	2928.16	(6.50)	722.86	8.99
IOC	530965	93832.00	(30.40)	6285.00	(33.07)
NAUKRI	532777	173.30	25.40	82.10	144.35
BERGEPAIN	509480	926.80	8.60	70.68	21.99
INDIACEM	530005	1043.10	(5.80)	36.60	219.76
NTPC	532555	19314.58	(8.20)	2944.30	(4.82)
ORCHIDCHEM	524372	304.77	(32.70)	(148.04)	(83.24)
20MICRONS	533022	74.57	4.60	(2.90)	(184.31)
A2ZMES	533292	64.06	(17.90)	(109.54)	(48.99)
ABCINDQ	520123	36.83	(9.80)	6.33	253.27
ABMKNO	531161	33.07	15.40	4.78	9.89
AGCNET	500463	242.16	36.50	47.01	185.10
ABBOTINDIA	500488	600.71	22.80	49.76	29.58
ADINATHBI	590088	0.45	(92.20)	0.01	102.63
AEGISCHEM	500003	87.42	(4.60)	11.94	460.56
ALMONDZ	531400	12.68	(34.90)	(2.84)	(167.30)
AMBIKCO	531978	121.66	3.50	14.24	39.88
APCL	518091	82.33	9.70	15.83	212.19
ANSALHSG	507828	215.19	105.20	1.41	(80.42)
CHOICEINF	531364	22.13	103.80	0.55	161.90
ARIES	532935	52.11	(18.60)	(1.65)	(83.33)
LIFELINE	506113	8.80	(50.00)	(0.57)	(914.29)
ASHAPURMIN	527001	440.69	88.60	1.22	(90.10)
ASHIANA	523716	69.12	262.60	29.58	909.60
ASTRAL	532830	375.35	11.40	16.58	(40.32)
AUTOIND	532797	85.15	(45.00)	(14.13)	(98.70)
AVANCE	512149	28.39	13.00	(1.75)	53.70
BPL	500074	4.57	(3.40)	2.85	719.57
BAJAJHIND	500032	1205.99	(9.30)	(538.61)	(27.06)
ISPATALLOY	513142	225.10	14.30	(2.89)	(123.86)

BALMLAWRIE	523319	613.95	(6.70)	68.91	(2.92)
BANCOINDIA	500039	250.69	(11.00)	(2.59)	(127.70)
BANSWRAS	503722	305.46	(6.60)	(1.66)	(120.49)
BHUSANSTL	500055	2419.91	(3.60)	(360.77)	(1743.48)
BINNY	514215	0.12	(94.60)	(1.37)	82.39
BIRSHLEDU	511607	1.68	(94.90)	(2.38)	(167.61)
BOMOXY-B1	509470	3.71	(20.90)	3.89	923.68
BUTTERFLY	517421	149.79	(14.20)	0.89	(11.88)
THEBYKE	531373	56.95	26.30	7.19	53.30
CEATFIN	511272	0.07	(46.20)	(16.39)	(13.74)
CAMPALLIED	500078	96.25	9.30	8.96	60.86
CAREERP	533260	24.86	50.80	3.63	99.50
CENTUM	517544	124.28	10.80	13.71	88.60
CINELINE	532807	4.74	16.20	0.66	(34.00)
COALINDIA	533278	21339.55	3.80	4238.55	(4.40)
CCCL	532902	153.93	0.90	(35.35)	(63.05)
CUBIFIN	511710	2.12	92.70	0.98	219.51
DCM	502820	256.38	1.40	17.70	19.00
DATAMATICS	532528	197.98	(7.50)	6.05	(40.30)
DHAMPURSUG	500119	441.24	1.60	75.29	49.20
DHANUKA	507717	153.04	0.20	21.94	(2.32)
DHARSUGAR	507442	83.61	15.30	(11.91)	(226.70)
FORTISFIN	526927	83.98	31.20	22.27	356.40
DREDGECORP	523618	193.76	(5.40)	40.75	1479.46
DWARKESH	532610	205.23	(11.10)	12.50	(64.95)
ECEIND	532491	40.23	32.70	0.93	(74.66)
EIHAHOTELS	523127	73.54	7.20	10.87	(4.31)
ELECTHERM	526608	502.50	28.80	(91.66)	61.20
EMPEESUG	500132	30.99	(70.30)	(145.61)	(370.32)
EMPOWER	504351	33.47	73.60	(0.62)	98.76
ESARIND	531502	1.26	(76.80)	(4.12)	(143.79)
ESABINDIA	500133	106.59	(4.00)	(1.38)	(116.33)
EKC	532684	125.54	(3.90)	(23.43)	25.70
EXCELCROP	532511	205.62	(7.00)	1.72	(83.85)
FDC	531599	216.48	9.30	33.89	1793.30
FORBESGOK	502865	70.65	(4.10)	10.30	201.28
SAHPETRO	532543	89.96	(24.70)	2.77	(56.31)
GALLISPAT	533265	156.82	24.90	1.80	(14.29)
GALLANTT	532726	165.19	(8.30)	10.44	172.58
GARWALLROP	509557	196.91	3.30	12.26	65.68
GLOBALVECT	532773	85.60	(3.20)	8.66	(25.02)
GOKEX	532630	257.60	(20.00)	34.84	447.80
GOLDIAM	526729	74.21	(1.60)	6.90	57.20
GNFC	500670	1192.89	(10.00)	(325.78)	(484.95)
HARRMALAYA	500467	82.13	(18.70)	(11.02)	(375.00)
HATSUN	531531	771.41	19.80	8.66	115.96
HAWKINCOOK	508486	157.27	10.90	9.65	(26.50)
HERCULES	505720	24.16	(12.00)	(0.65)	(135.14)
HESTERBIO	524669	23.36	6.90	4.13	5.36
HCIL	500184	341.86	(8.10)	(15.95)	(180.92)
HIRECT	504036	34.82	(4.00)	3.24	36.71

HOCL	500449	69.76	102.30	(48.18)	(0.73)
HINDTINWRK	530315	75.65	6.30	1.32	(39.73)
HINDNATGLS	515145	570.17	17.80	(77.27)	(22.30)
HOTELEELA	500193	228.37	2.80	43.96	176.93
IGPL	500199	277.53	(23.70)	12.34	(12.98)
IPRINGLTD	523638	25.32	22.10	(0.84)	(740.00)
INDIAGLYCO	500201	631.29	(8.50)	(2.63)	94.23
INDIANHUME	504741	296.33	26.60	12.56	100.32
INDOTECH	532717	36.24	7.40	1.35	4600.00
INDRAMEDCO	532150	176.04	5.40	7.57	5.58
INTECCAP	526871	31.15	(18.10)	0.33	(88.09)
ISFT	533181	101.16	115.00	0.05	(94.90)
SARASIND	533033	911.04	3.00	39.26	35.99
INDOPACIF	531565	6.77	209.10	0.56	530.77

Country	Monday 1 June 15	Tuesday 2 June 15	Wednesday 3 June 15	Thursday 4 June 15	Friday 5 June 15
<b>US</b>		Core Durable Goods Orders m/m ,Durable Goods Orders m/m ,CB Consumer Confidence , New Home Sales , Richmond Manufacturing Index .	Crude Oil Inventories .	FOMC Member Williams Speaks , Unemployment Claims	Prelim GDP q/q , Prelim GDP Price Index q/q , Chicago PMI , Revised UoM Consumer Sentiment , Revised UoM Inflation Expectations .
<b>UK/EURO ZONE</b>	German Ifo Business Climate		GfK German Consumer Climate ,French Consumer Spending m/m , ECB Financial Stability Report , Belgian NBB Business Climate	German Prelim CPI m/m ,Italian Monthly Unemployment Rate , Italian Quarterly Unemployment Rate , Italian Prelim CPI m/m , Italian 10-y Bond Auction .	Spanish Flash CPI y/y , M3 Money Supply y/y , Private Loans y/y , Second Estimate GDP q/q , Prelim Business Investment q/q , Index of Services 3m/3m .
<b>INDIA</b>	Auto sales no , HSBC PMI no	RBI credit Policy	HSBC India Services PMI		

## Narnolia Securities Ltd.

### Narnolia Research Lab

Stellar IT Park | 5th Floor | Office Space No. 6 | Tower-II/nd Plot No. C-25 | Sector-62 | Noida | Ph : 0120-4215110

### Central Strategy Desk - Kolkata

124 | 1st Floor | 7/1 Lords Sinha Road | Kolkata - 71  
Ph : 033-22821500 | M : 93347 14418, 98302 69810