

SGX NIFTY : 7924.50 ( 75 Pt Down )

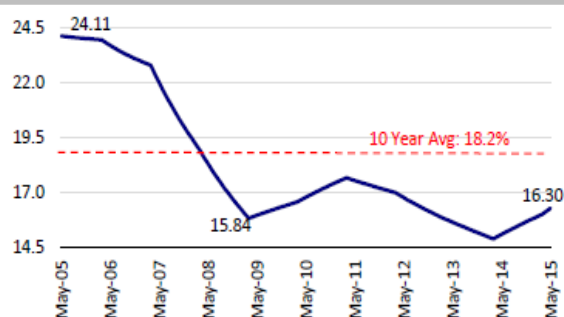
**Quote of the Day**

"Long ago, Sir Isaac Newton gave us three laws of motion, which were the work of genius. But Sir Isaac's talents didn't extend to investing: He lost a bundle in the South Sea Bubble, explaining later, 'I can calculate the movement of the stars, but not the madness of men.' If he had not been traumatized by this loss, Sir Isaac might well have gone on to discover the Fourth Law of Motion: For investors as a whole, returns decrease as motion increases."

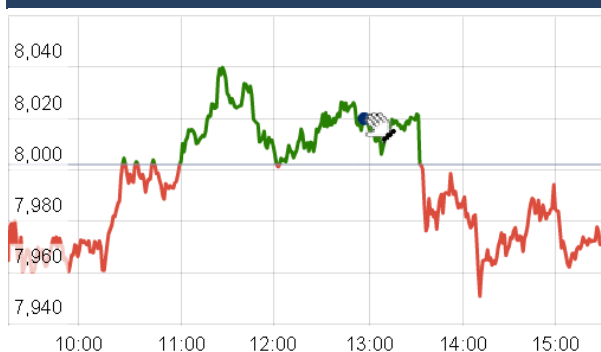
Warren Buffett

**Chart of the Day**

**Sensex ROE trend**



**Index Action Nifty ( 31th Aug 15 )**



**Index**

Contents	Page	Coverage
News	2	Update
Economic Calendar	3	Update

**Market**

Name	Value	Change
Sensex	26,283.09	109.29
Nifty	8001.95	53.00
DOW	16,528.16	(114.58)
NASDAQ	4,776.51	(51.42)
CAC	4,652.95	(22.18)
DAX	10,259.46	(39.07)
FTSE	6,247.94	55.91
NIKKIE	18,587.32	(303.16)
HANG SENG	21,544.14	(126.44)
EW ALL SHARE	13832.54	(24.89)

**Instituional Turnover**

**FII**

Investor	Buy(Cr.)	Sale(Cr.)	Net(Cr.)
31th Aug,15	9733.82	10285.01	(551.19)
Aug,15	70464.09	77470.22	(7006.13)
2015	736497.23	713429.01	23068.22

**DII**

Investor	Buy(Cr.)	Sale(Cr.)	Net(Cr.)
31th Aug,15	1819.22	1340.63	478.59
Aug,15	32940.81	22626.99	(335.02)
2015	281805.73	256438.21	25367.52

**Commodity Price**

Commodity/Currencies	Value	
GOLD	26680.00	↑
SILVER	34590.00	↑
CRUDEOIL	47.54	↑
COPPER	349.25	↑
NATURALGAS	178.50	↓
DOLLAR/RS.	66.48	↑
EURO/RS.	74.72	↑
POUND/RS.	102.15	↑

## Market Snapshot

### Top Price Performers

Top Performers 1D	% Change	Top Performers 1W	% Change	Top Performers 1M	% Change
ALPHAGEO	19.98	DSKULKARNI	65.49	JUBLINDS	72.66
DSKULKARNI	19.48	ALPHAGEO	47.62	DSKULKARNI	71.90
INDIANCARD	11.34	ESTER	38.09	ENERGYDEV	58.66
EXCELCROP	10.94	IBREALEST	32.30	SHRENUJ	48.73
STEERINTER	10.00	JUBLINDS	31.52	DSINVEST	44.37

### Worst Price Performers

Worst Performers 1D	% Change	Worst Performers 1W	% Change	Worst Performers 1M	% Change
NTCIND	(16.22)	IMPEXFERRO	(33.56)	AMTEKAUTO	(69.65)
JRG	(14.88)	AADHAARVEN	(26.67)	AMTEKINDIA	(62.08)
SURANAT&P	(12.57)	STEERINTER	(23.85)	KGL	(58.12)
KDDL	(11.74)	JMTAUTOLD	(22.49)	AHMEDFORGE	(56.82)
LPDC	(10.49)	AMTEKINDIA	(22.49)	ROLATAN	(53.64)

## Top News

- **Strides Arcolab** has completed the Rs 1,910-crore acquisition of Aspen Pharmacare's generic pharmaceutical business and related assets in Australia. The transaction has now achieved closure on completion of closing conditions and statutory and regulatory approvals. The acquired business will be integrated and consolidated with Strides effective September 1, 2015

- **Punj Lloyd** has won a Rs 1,094 crore turnkey contract from Indian Oil Corporation Ltd (IOCL) for work related to its Haldia Refinery. The scope of work for the project involves the residual process design... study, engineering, procurement, construction and commissioning of the Sulphur Block comprising the Sulphur Refinery Unit (SRU), Amine Regeneration Unit (ARU), the Sour Water Stripper (SWS) including the Utilities and Offsite facilities

- **Canara Bank** said the government will infuse an equity capital of Rs 947 crore in the bank. It said the board of the bank at a meeting held today approved the proposal of issuing equity shares on preferential basis to the government in lieu of the capital infusion. The government decided to infuse a total of Rs 20,088 crore in 13 public sector banks, including SBI, PNB, IDBI, Bank of Baroda, Canara Bank, Indian Overseas Bank and Union Bank of India. Canara Bank shares traded at Rs 286.80

- **Brigade Enterprises Mgt Guideline** : Company ' hospitality division plans to open 1,200 hotel rooms in South India. The company says its capital expenditure (Capex) commitment for the projects is Rs 300 crore of which Rs 150 crore has already been spent. The company is funding majority of this amount through internal accruals. With the Holiday Inn Express' tie-up and construction plans for three-star hotels in Kochi, Mysuru and in Bengaluru, the company expects around 2,000 keys operational over five years

- **India first quarter (April-June) gross domestic product in fiscal year 2015-16** slipped from 7.5 percent in the previous quarter (January-March) to 7 percent. A poll of economists had forecast growth to come in at 7.5 percent.

- **Larsen & Toubro** has won a turnkey order for Rs 1,489 crore water supply project from Public Health Engineering Department, Ajmer. The Water & Effluent Treatment Strategic Business Group of L&T Construction has won turnkey orders worth Rs 1,489 crore in August 2015 in three packages, from Public Health Engineering Department, Ajmer, under the Rajasthan Rural Water Supply and Fluorosis Mitigation Project

- **India's coffee exports** fell by 7.59 percent to about USD 64 million in July this year due to sluggish global prices. In July 2014, the country exported coffee worth USD 69.15 million, according to the data available with the Commerce Ministry. Coffee prices in international markets are under pressure due to production surplus in Brazil, the world's leading producer.

- **Eurostat said consumer price inflation** rose by a seasonally adjusted 0.2% last month, above expectations for a gain of 0.1% and following a 0.2% increase in July.

- **Italian Retail Sales** fell to -0.3%, from -0.2% in the preceding month whose figure was revised down from -0.1%. Analysts had expected Italian Retail Sales to rise 0.1% last month.

- **Turkish Trade Balance fell** to a seasonally adjusted -7.03B, from -6.20B in the preceding quarter. Analysts had expected Turkish Trade Balance to rise 7.08B in the last quarter.

- **German Retail Sales** rose to a seasonally adjusted 1.4%, from -1.0% in the preceding month whose figure was revised up from -2.3%.

- **Japanese Housing Starts** fell to a seasonally adjusted 7.4%, from 16.3% in the preceding quarter. Analysts had expected Japanese Housing Starts to fall to 11.0% in the last quarter.

### Economic Calendar

Country	Monday 31th Aug 15	Tuesday 1th Sept 15	Wednesday 2th Sept 15	Thursday 3th Sept 15	Friday 4th Sept 15
<b>US</b>	Chicago PMI .	Final Manufacturing PMI , ISM Manufacturing PMI , Construction Spending m/m , IBD/TIPP Economic Optimism , ISM Manufacturing Prices , Total Vehicle Sales .	Revised Nonfarm Productivity q/q , ADP Non-Farm Employment Change , Revised Unit Labor Costs q/q , Factory Orders m/m , Crude Oil Inventories .	Challenger Job Cuts y/y , Trade Balance , Unemployment Claims , Final Services PMI , ISM Non-Manufacturing PMI , Natural Gas Storage , Beige Book .	Non-Farm Employment Change , Unemployment Rate , Average Hourly Earnings m/m.
<b>UK/EURO ZONE</b>	CPI Flash Estimate y/y , Core CPI Flash Estimate y/y , Italian Retail Sales m/m .	Spanish Manufacturing PMI , Italian Manufacturing PMI , French Final Manufacturing PMI , German Unemployment Change , German Final Manufacturing PMI , Final Manufacturing PMI , Manufacturing PMI , Net Lending to Individuals m/m , M4 Money Supply m/m , Mortgage Approvals , Unemployment Rate .	German Retail Sales m/m , Spanish Unemployment Change , Halifax HPI m/m , PPI m/m , BRC Shop Price Index y/y .	Spanish Services PMI , Italian Services PMI , French Final Services PMI , German Final Services PMI , Final Services PMI , Services PMI , Retail Sales m/m , Spanish 10-y Bond Auction , Minimum Bid Rate , ECB Press Conference .	German Factory Orders m/m , Retail PMI , Trade Balance , Consumer Inflation Expectations , Revised GDP q/q , French 10-y Bond Auction .
<b>INDIA</b>	GDP Data	Auto sales No, HSBC Manufacturing PMI no , CAD Data.	Auto sales No .		

### Narnolia Securities Ltd.

#### Narnolia Research Lab

Stellar IT Park | 5th Floor | Office Space No. 6 | Tower-I/Ind Plot No. C-25 | Sector-62 | Noida  
| Ph : 0120-4215110

#### Central Strategy Desk - Kolkata

124 | 1st Floor | 7/1 Lords Sinha Road | Kolkata - 71  
Ph : 033-22821500 | M : 93347 14418, 98302 69810