

**SGX NIFTY :
5800(34Pts Up)**

Quote of The Day

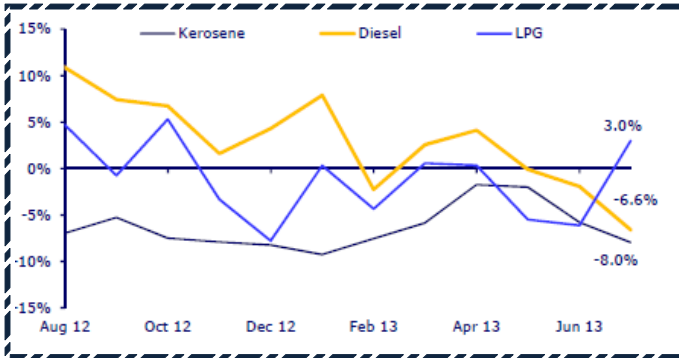
“The

primary test of managerial economic performance is the achievement of a high earnings rate on equity capital employed (without undue leverage, accounting gimmickry, etc.) and not the achievement of consistent gains in earnings per share.”

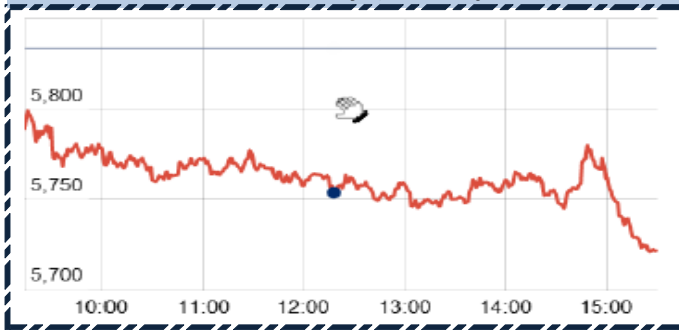
Warren Buffett

Chart of the Day

Monthly Consumption Growth



Index Action-Nifty (30th Sept, 13)



Index

Contents	Page	Coverage
Insider	4	UPDATE
News	3	UPDATE
Economic Calendar	4	UPDATE
Derivative Research	2	UPDATE

MARKET		
Name	Value	Change
Sensex	19379.77	(347.50)
Nifty	5735.3	(97.90)
DOW	15129.67	(128.57)
NASDAQ	3771.48	(10.11)
CAC	4143.44	(43.33)
DAX	8594.4	(67.11)
FTSE	6462.22	(50.44)
NIKKIE	14672.66	171.66
HANG SENG	Closed	
EW ALL SHARE	9202.59	(118.04)

INSTITUTIONAL TURNOVER			
FII			
Investor	Buy(Cr.)	Sale(Cr.)	Net(Cr.)
30th Sept, 13	2147.39	2,667.03	(519.64)
Sept,13	68120.40	56,944.35	11176.05
2013	574032.03	526,157.57	47874.46
DII			
Investor	Buy(Cr.)	Sale(Cr.)	Net(Cr.)
30th Sept,13	1072.96	983.21	89.75
Sept,13	19922.48	29,052.58	(9130.10)
2013	203002.60	242,896.15	(39893.55)

COMMODITY PRICE		
COMMODITY/CURRENCIES	Value	
GOLD	30450.00	↓
SILVER	49146.00	↓
CRUDEOIL	108.32	↓
COPPER	466.40	↓
NATURALGAS	223.90	↓
DOLLAR/RS.	62.60	↑
EURO/RS.	84.63	↑
POUND/RS.	101.28	↑

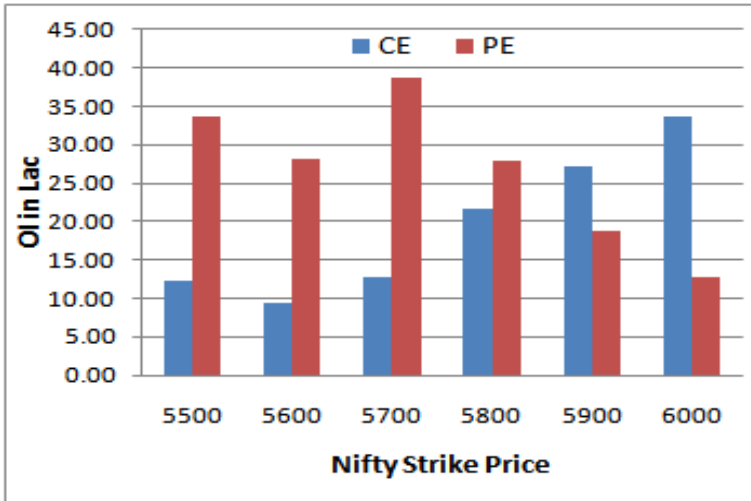
Narnolia Securities Ltd.

NIFTY SNAPSHOT

Nifty Spot	5735.30(-97.90)
Nifty Oct 2013 Future	5777
Nifty Nov 2013 Future	5812
Nifty Oct 2013 Open Interest	16892350
Nifty Nov 2013 Open Interest	1278950
7 DMA of Spot Nifty	5874
21 DMA of Spot Nifty	5781
50 DMA of	5708
Spot Nifty	
VOLATILITY INDEX (VIX)	26.65(+2.59)
PUT CALL RATIO	0.85



Nifty (Oct Series) Option OI Distribution:



Activity of Nifty (Oct Series) Strike

Strike	CALL		PUT	
	OI	% Chng	OI	% Chng
5500	1220500	8.1	3358500	12.3
5600	930250	-0.4	2819750	10.7
5700	1268000	14.7	3880050	2.1
5800	2168400	30.9	2800800	-18.4
5900	2721150	13.2	1878500	-14.2
6000	3371350	8.0	1264900	-0.2

FII Activity (Fig in Cr)

Segment	Buy	Sell	Net
INDEX FUTURE	1,162	1,405	(243)
INDEX OPTION	10,871	10,293	577
STOCK FUTURE	1,401	1,448	(47)
STOCK OPTION	474	535	(61)
TOTAL	13,908	13,681	227

Fresh Long Seen In (Rising OI -Rising Price)

Scrip	OI	OI ch%	CMP	Ch%
ABIRLANUVO	514,250	26.4	1245.0	1.4
ACC	814,250	21.0	1112.5	1.1
GSPL	1,760,000	16.4	54.9	5.6
NTPC	9,152,000	10.3	148.2	0.3
HCLTECH	2,674,000	5.7	1088.3	1.6

Fresh Shorts Seen In: (Rising OI -Falling Price)

Scrip	OI	OI ch%	CMP	Ch%
FINANTECH	1,993,500	24.7	141.1	-6.4
POWERGRID	9,116,000	20.9	98.2	-0.8
TATASTEEL	16,111,000	13.1	271.6	-5.6
CANBK	3,251,000	8.9	221.4	-1.6
RELCAPITAL	5,930,000	7.0	315.1	-4.3

PCR (OI)

STOCK	T1	T2
CROMPGREAV	0.11	0.03
IGL	0.15	0.07
UNIPHOS	0.32	0.15
BAJAJ-AUTO	0.59	0.30
ABIRLANUVO	0.43	0.22

YESTERDAY'S IMPACT TRADE

STOCK	STRIKE CE	STOCK	STRIKE PE
SBIN	1700 CE	MCDOWELL-N	2500 PE
RELIANCE	840 CE	SBIN	1600 PE
DLF	140 CE	RELIANCE	820 PE
MCDOWELL-N	2700 CE	AXISBANK	1000 PE
TATASTEEL	300 CE	ICICIBANK	900 PE

Markets Snapshot

Top Price Performers

Top Performers 1D	% Change	Top Performers 1W	% Change	Top Performers 1M	% Change
ICSA	16.05	3IINFOTECH	42.82	HANUNG	151.76
3IINFOTECH	12.57	BHARTISHIP	42.68	GOLDBEES	139.58
BEPL	12.00	ICSA	35.45	BLCISER	127.20
VIPUL	11.97	ABGSHIP	35.21	GALLIPAT	111.14
HOVS	11.42	KFA	32.48	TUNITEX	110.94

Worst Price Performers

Worst Performers 1D	% Change	Worst Performers 1W	% Change	Worst Performers 1M	% Change
DHANUS	(12.50)	FIRSTLEASE	(25.18)	KNRCON	(56.43)
CAMPALLIED	(11.11)	VIKASGLOB	(23.34)	FIRSTLEASE	(53.22)
DCMSRMIND	(10.52)	DHANUS	(22.22)	JMDTELEFILM	(52.54)
WESTE	(10.50)	SALSTEEL	(22.16)	KGL	(45.60)
MODILUFT	(10.27)	OSCAR	(21.75)	SATINDLTD	(40.69)

Top News :

- **The Board of Directors of Coromandel International Limited (Coromandel)** and the Board of Directors of Liberty Phosphate Limited (LPL), a subsidiary of Coromandel, and Liberty Urvarak Limited (LUL), a wholly owned subsidiary of Coromandel, have approved merger of LPL and LUL with Coromandel through a Scheme of Arrangement. Coromandel, along with its wholly owned subsidiary LUL, holds 79.62% equity stake in LPL. Public shareholders of LPL shall be issued shares in Coromandel in the ratio of 7 (seven) equity shares of Re. 1 each of Coromandel for every 8 (eight) equity shares of Rs. 10 each of LPL in terms of the Scheme. The shares held by Coromandel and LUL in LPL shall get extinguished.

- **Crisil downgrades** Reliance Infra rating on the company's debt programmes and long-term bank facilities to "A+/Negative" from "CRISIL AA-/Negative".

- **ING Vysya News Clarification** : News regarding "ING likely to Exit Local Banking Biz", ING Vysya Bank Ltd has clarified to BSE that "ING never comments on market rumours and speculations. ING Vysya Bank does not have any other specific comments to offer."

- **Glenmark Pharmaceuticals** has received approval from the US health regulator for its generic Hydrocortisone Butyrate Cream used for treating variety of skin infections. Glenmark Generics Inc USA, the subsidiary of Glenmark Generics Ltd has received nod for its Hydrocortisone Butyrate Cream USP (0.1 per cent), abbreviated new drug approval (ANDA) from the United States Food and Drug Administration (USFDA)

- **Siemens Ltd today** has bagged an order worth Rs 271 crore from Rashtriya Ispat Nigam (RINL) for renewing the state-run firm's steel plant at Vishakhapatnam. A consortium comprising Siemens AG (Germany) and Siemens Ltd has received an order from state-owned Rashtriya Ispat Nigam to thoroughly modernise its Vishakhapatnam steel plant .

- **SKS Microfinance Limited** , has concluded a securitisation transaction for Rs 321 crore with a major public sector bank. The transaction was rated A1+ (SO) by a leading rating agency, SKS said in a press release.

- **GlaxoSmithKline** agreed the 700 million pounds sale of its thrombosis drug brands and a related factory to Aspen Pharmacare , as part of its strategy to focus on growth products.

- **The Ministry of Economy Trade and Industry of Japan** said that retail sales rose to a seasonally adjusted annual rate of 1.1%, from -0.3% in the preceding month. Analysts had expected retail sales to rise at annual rate of to 1.0% last month.

- **Eurostat said consumer price inflation** increased by a seasonally adjusted 1.1% in September, down from 1.3% in August. The rate stands below the European Central Bank's target of near but just below 2%.

- **Indian current account deficit** came in at 4.9 percent (vs 4 percent YoY) in the first quarter of 2014, inline with street expectation. Experts called it a "mild positive" saying the deficit stayed high due to rise in imports. In absolute terms, CAD stood at USD 21.8 billion in Q1 against USD 16.9 billion in the Q1 of previous year. Excluding the increase in gold imports of USD 7.3 billion in Q1 of 2013-14 over the corresponding quarter of the preceding year, CAD would work out to USD 14.5 billion, which translates into 3.2 percent of GDP.

Insider

Company	Name of Acquirer / Seller	Buy/Sell	Mode	Qty.
M&M	Anuja Sharma	Sell	Off Market	24000
ZENITHBIR	Asian Distributors Pvt Ltd	Buy	Market	64806
GAEL	Shilpa Gupta & Manish Gupta	Buy	Market	84946

Economic Calendar

	Monday 30-Sep	Tuesday 1-Oct	Wednesday 2-Oct	Thursday 3-Oct	Friday 4-Oct
US	S&P/CS Composite-20 HPI y/y, Chicago PMI .	Final Manufacturing PMI , ISM Manufacturing PMI , Construction Spending m/m , Total Vehicle Sales .	ADP Non-Farm Employment Change , Crude Oil Inventories	Unemployment Claims , ISM Non-Manufacturing PMI , Factory Orders m/m , Natural Gas Storage .	Non-Farm Employment Change , Unemployment Rate , Average Hourly Earnings m/m .
UK/EURO ZONE	Net Lending to Individuals m/m , CPI Flash Estimate y/y , Retail PMI , M4 Money Supply m/m , Mortgage Approvals .	Spanish Manufacturing PMI , German Unemployment Change , Italian Manufacturing PMI , Unemployment Rate , Treasury Currency Report.	Spanish Unemployment Change , Construction PMI , Minimum Bid Rate , ECB Press Conference .	Halifax HPI m/m , Spanish Services PMI , Italian Services PMI , Final Services PMI , Services PMI .	German PPI m/m , Spanish 10-y Bond Auction ,
INDIA		Auto sales no .HSBC manufacturing PMI data		Auto sales no	HSBC India Services PMI , HSBC India Composite PMI

Risk Disclosure & Disclaimer: This report/message is for the personal information of the authorized recipient and does not constitute to be any investment, legal or taxation advice to you. Narnolia Securities Ltd. (Hereinafter referred as NSL) is not soliciting any action based upon it. This report/message is not for public distribution and has been furnished to you solely for your information and should not be reproduced or redistributed to any other person in any form. The report/message is based upon publicly available information, findings of our research wing "Eastwind" & information that we consider reliable, but we do not represent that it is accurate or complete and we do not provide any express or implied warranty of any kind, and also these are subject to change without notice. The recipients of this report should rely on their own investigations, should use their own judgment for taking any investment decisions keeping in mind that past performance is not necessarily a guide to future performance & that the value of any investment or income are subject to market and other risks. Further it will be safe to assume that NSL and /or its Group or associate Companies, their Directors, affiliates and/or employees may have interests/ positions, financial or otherwise, individually or otherwise in the recommended/mentioned securities/mutual funds/ model funds and other investment products which may be added or disposed including & other mentioned in this report/message.