

SGX NIFTY : 8029 ( 53 Pt Up )

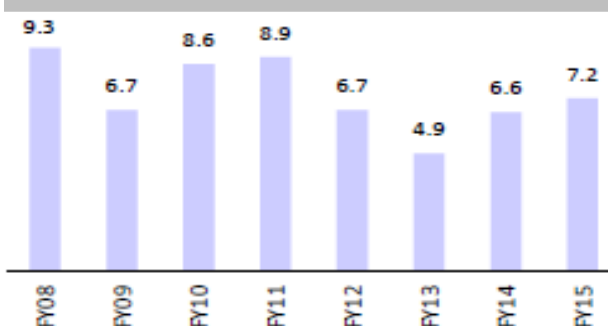
**Quote of the Day**

"We both (He and Warren Buffett) insist on a lot of time being available almost every day to just sit and think. That is very uncommon in American business. We read and think. So Warren and I do more reading and thinking and less doing than most people in business. We do that because we like that kind of a life."

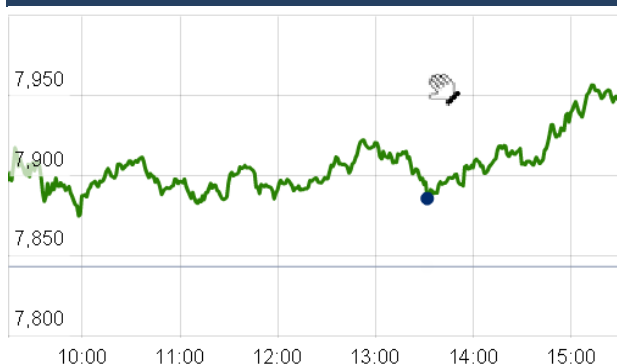
Charles Munger

**Chart of the Day**

**GDP Growth Trend**



**Index Action Nifty (30th Sept 15 )**



**Index**

Contents	Page	Coverage
News	2	Update
Economic Calendar	3	Update

**Market**

Name	Value	Change
Sensex	26,154.83	376.16
Nifty	7948.90	105.60
DOW	16,314.67	113.35
NASDAQ	4,620.16	102.42
CAC	4,455.29	111.56
DAX	9,660.46	210.04
FTSE	6,061.42	152.31
NIKKIE	17,592.87	204.63
HANG SENG	20,846.30	289.70
EW ALL SHARE	13733.28	196.38

**Instituional Turnover**

**FII**

Investor	Buy(Cr.)	Sale(Cr.)	Net(Cr.)
30-Sep-15	7063.30	6947.22	116.08
Sept,15	75168.28	85241.20	(10072.92)
2015	897125.63	904371.51	(7245.88)

**DII**

Investor	Buy(Cr.)	Sale(Cr.)	Net(Cr.)
30-Sep-15	2349.53	2541.31	(191.78)
Sept,15	35130.57	26463.52	8667.05
2015	361428.89	310810.88	50618.01

**Commodity Price**

Commodity/Currencies	Value	
GOLD	25856.00	↓
SILVER	34547.00	↓
CRUDEOIL	45.23	↓
COPPER	342.70	↑
NATURALGAS	166.70	↓
DOLLAR/RS.	65.58	↓
EURO/RS.	73.18	↓
POUND/RS.	99.20	↑

## Market Snapshot

### Top Price Performers

Top Performers 1D	% Change	Top Performers 1W	% Change	Top Performers 1M	% Change
LITL	19.32	CANDC	86.12	KSOILS	128.57
NAGAAGRI	19.09	LITL	57.83	FARMAXIND	127.27
VASCONEQ	15.89	XLENERGY	49.47	ERAINFRA	80.37
PANYAMCEM	15.01	BHAGYNAGAR	36.88	LITL	76.43
CALSREF	14.29	ERAINFRA	33.56	MODIRUBBER	75.45

### Worst Price Performers

Worst Performers 1D	% Change	Worst Performers 1W	% Change	Worst Performers 1M	% Change
BLUESTINFO	(19.98)	AMTEKINDIA	(22.22)	AEGISCHEM	(88.94)
SHIV-VANI	(14.85)	SHRENUJ	(21.89)	AMTEKINDIA	(61.65)
WSI	(9.85)	RUSHIL	(21.75)	GOKUL	(40.13)
GLOBALCA	(9.56)	TANEJAERO	(21.42)	ROLATAN	(37.32)
AADHAARVEN	(9.09)	HELIOSMATH	(18.96)	DECNGOLD	(35.11)

## Top News

- **Inox Wind Mgt Guideline** : Company has bagged 50 MW turnkey order from GMDC (Gujarat Mineral Development Corporation Limited) at Rojmal in Gujarat state. It is GMDC's first order with the company and will be a part of the 400 MW 'Inox Wind Park' project at Rojmal . The execution of the order will start within 6-8 months that is from March or May of 2016. The order value if is around Rs 6-6.5 crore per MW and the margins would be over 15 percent, said Tarachandani. Therefore the total order value would be around Rs 300-325 crore. The Inox Wind Park will be completed by the second half of the next fiscal.

- **NMDC Ltd** plans to invest Rs 40,000 crore in the next eight years to reach a target of 100 million tonnes per annum of iron ore production from the current levels of little over 30 MTPA. The investment will go into developing new mines, Steel Plant, Legacy Iron ore company (in Australia) and Slurry Pipe line 9 from (Kirandul to Vizag), among others .

- **Vivimed Labs** has signed a definitive agreement to divest certain products within its speciality chemicals portfolio to Clariant Chemicals. Transaction value of identified products, trademarks & assets is at Rs 380 crore . The part of speciality chemicals division's business, which is proposed to be divested, accounted for about 10 percent of the consolidation revenue from operation in FY2015 .

- **Ashok Leyland Ltd** has cumulatively sold 18,00,000 equity shares (Eighteen lakh shares) of Rs.10/- each held in IndusInd Bank Limited in the open market during the period between September 25 - 29, 2015 at a net price of Rs.918.76 per share.

- **NDTV Convergence, the digital arm of NDTV group**, signed a three-year partnership with Taboola to power content recommendations across their entire network of desktop and mobile sites . The deal is estimated to be worth Rs 90-100 crore for NDTV over the course of agreement based on traffic projections across web and mobile

- **Sterlite Tech** completes acquisition of Elitecore Technologies , a global telecom software product company from First Carlyle Ventures Mauritius (whose affiliate is advised by The Carlyle Group) and other shareholders. The acquisition has been completed in accordance with the terms set out in the agreement announced on 22 September 2015.

- **Godrej Properties** has sold 4.35 lakh square feet of its commercial project at Bandra-Kulra Complex (BKC) to Abbott India for Rs 1,479 crore. The project was being developed for Jet Airways on a 50:50 profit-sharing agreement. Godrej Properties says the company will utilise a large amount of the sum to reduce its current debt standing at Rs 2,500 crore. The residual amount will be used to focus on residential projects.

- **The government** cut natural gas prices by 16 percent to USD 4.24 per unit for the six month period, beginning October 1. Natural gas prices, according to a formula approved by the government in October last year, will fall to USD 4.24 per million British thermal unit on net calorific value (NCV) basis from the current USD 5.50 per mmBtu.

- **U.S. payroll processing firm ADP** said non-farm private employment rose by a seasonally adjusted 200,000 this month, above expectations for an increase of 194,000. The economy created 186,000 jobs in August, whose figure was downwardly revised from a previously reported increase of 190,000.

- **Eurostat said consumer price inflation** declined by a seasonally adjusted 0.1% this month, compared to expectations for a flat reading and following a 0.1% increase in August.

- **Euro zone CPI** fell to a seasonally adjusted annual rate of -0.1%, from 0.1% in the preceding month. Analysts had expected Euro zone CPI to fall to 0.0% last month.

- **U.K. Index of Services** rose to 0.8%, from 0.7% in the preceding month. Analysts had expected U.K. Index of Services to rise 0.8% last month.

- **German Import Price Index** fell to a seasonally adjusted -1.5%, from -0.7% in the preceding month. Analysts had expected German Import Price Index to fall to -1.5% in the last month

### Economic Calendar

Country	Monday 28th Sept 15	Tuesday 29th Sept 15	Wednesday 30th Sept 15	Thursday 1th Oct 15	Friday 2th Oct 15
<b>US</b>	Core PCE Price Index m/m , Personal Spending m/m , Personal Income m/m , Pending Home Sales m/m ,	Goods Trade Balance , S&P/CS Composite-20 HPI y/y , CB Consumer Confidence .	ADP Non-Farm Employment Change , Chicago PMI , Crude Oil Inventories .	Challenger Job Cuts y/y , Unemployment Claims , ISM Manufacturing PMI , Final Manufacturing PMI , ISM Manufacturing Prices , Natural Gas Storage , Total Vehicle Sales .	Non-Farm Employment Change , Unemployment Rate , Average Hourly Earnings m/m
<b>UK/EURO ZONE</b>		German Import Prices m/m , German Prelim CPI m/m , French Consumer Spending m/m , French Consumer Spending m/m , Spanish Flash CPI y/y , Italian Monthly Unemployment Rate ,	Current Account , Final GDP q/q , Net Lending to Individuals m/m , German Unemployment Change , CPI Flash Estimate y/y , Core CPI Flash Estimate y/y , Unemployment Rate .	Halifax HPI m/m , Manufacturing PMI , FPC Meeting Minutes , ECB Monetary Policy Meeting Accounts .	German Retail Sales m/m , Spanish Unemployment Change , PPI m/m , French 10-y Bond Auction .
<b>INDIA</b>		RBI Credit Policy	Current Account Q2	Auto sales No, HSBC Manufacturing PMI no .	

## Narnolia Securities Ltd.

#### Narnolia Research Lab

Stellar IT Park | 5th Floor | Office Space No. 6 | Tower-II/nd Plot No. C-25 | Sector-62 | Noida  
| Ph : 0120-4215110

#### Central Strategy Desk - Kolkata

124 | 1st Floor | 7/1 Lords Sinha Road | Kolkata - 71  
Ph : 033-22821500 | M : 93347 14418, 98302 69810