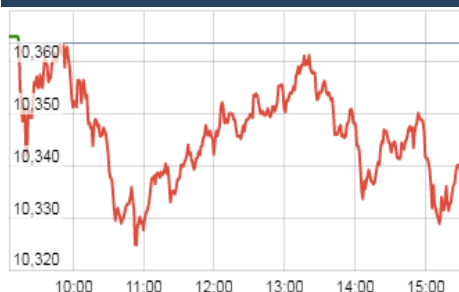


### KEY LEVELS

Support 1 : 10272

Resistance 1 : 10400

### Nifty Intraday Chart



### Market Outlook

Yesterday we have seen a zigzag move of Indian equities and after opening on a subdued note Nifty traded in the band of 10324-10365. At the end of the day the index closed at 10335.30. It had a net loss of 0.27% over the previous trading day's close. The broader market was in favor of bulls as the midcap and small cap indices outshined the benchmark index and closed the day in green. On the sectoral front, some buying interest was witnessed in Realty and Private banking stocks while Metal and PSU banking stocks lead to a decline. The breadth of the market was slightly positive with more advances than declines.

After making a low of 9687.55 on 28th September, Nifty has given a sharp bullish rally over 7% in a time span of just one month. It has also given a bullish breakout (U-pattern) above 10180 on 16th October. The pattern target of the index is 10675. Currently, the market breadth is stable and midcap and small-cap indices also responding in the same direction with the benchmark index.

On downside in near term 10,200 should act as strong support for Nifty

### Market

Market	Value	% Change
<b>Morning Traded Market</b>		
SGX NIFTY	10,409.00	0.29%
NIKKIE	22,292.28	1.26%
HANG SENG	28,387.55	0.50%
<b>Yesterday Closing Market</b>		
Sensex	33,213.13	-0.16%
Nifty	10,335.30	-0.27%
DOW	23,377.24	0.12%
NASDAQ	6,727.67	0.43%
CAC	5,503.29	0.18%
DAX	13,229.57	0.09%
FTSE	7,493.08	0.07%
EW ALL SHARE	19,243.51	0.08%

% Change in 1 day

### Commodity Price ( Yesterday Closing )

Commodity/Currencies	Value	% Change
GOLD	29153.00	-0.79%
SILVER	38818.00	-1.14%
CRUDEOIL	61.20	0.18%
NATURALGAS	187.80	-3.05%
DOLLAR/RS.	64.85	-0.16%
EURO/RS.	75.33	-0.18%
POUND/RS.	85.57	0.11%

% Change in 1 day

### Institutional Turnover

FII			
Investor	Buy(Cr.)	Sale(Cr.)	Net(Cr.)
31-Oct-17	5992	6524	(532)
Oct-17	103827	111655	(7827)
2017	1043217	1066333	(23116)
DII			
Investor	Buy(Cr.)	Sale(Cr.)	Net(Cr.)
31-Oct-17	3906	3309	597
Oct-17	74714	64623	10091
2017	661535	589502	72033

### Event Today

#### Bonus Issue

ARFIN ( 2:1)

INFINITE ( Ratio 1:26)

(Exdate : 1.11.2017)

#### Interim Dividend

HCLTECH : Rs 2.00/-

HINDUNILVR : Rs 8/-

HINDZINC : Rs 2.0/-

IBULHSGFIN : 9.00/-

(Exdate : 1.11.2017)

#### Stock Split

SHRJAGP ( From Rs.10/- to Rs.1/-)

(Exdate : 1.11.2017)

#### Result

APOLLOTYRE , CARBORUNIV

ECLERX , ENIL , GODREJCP

GREAVESCOT , HEROMOTOCO

HEXAWARE, JSWENERGY, MAXINDIA

MHRIL , PRAJIND , RADIOCITY

TECHM , TVSMOTOR

#### Concall

HOEC : 9:30 AM ,

Chola Inves , Cont Corp : 11:00 AM

J&K Bank , Blue Star ; 11:00 AM

DB Corp : 11:30 AM

IIFL Holdings , TVS Motors : 2:30 PM

Asian Granito : 3:30 PM

KPIT, Welspun Enterprises : 4:00 PM

Subros : 4:30 PM , Hero Motors : 5:30 PM

JSW Energy : 6:00 PM

Godrej Cons , Shriram Trans : 6:30 pm

**Quote of the Day** : "The time of maximum pessimism is the best time to buy and the time of maximum optimism is the best time to sell." **John Templeton**

**The New India Assurance Company Limited****"SUBSCRIBE for  
LONG TERM"****1th Nov 2017**

New India Assurance is the largest general insurance company in India covering fire, engineering, aviation, liability, marine, motor and health insurance. For FY17, the company as many as 27.10 million policies across all product segments which is the highest among all general insurance companies in India. Considering the low penetration of Insurance in India we see ample space for growth. The general insurance business in India is growing at a healthy rate of 17%. India currently accounts for less than 1.5 per cent of the world's total insurance premiums. Currently the premium income have grown by 16% CAGR for last 5 years. The company is being offered at 68 times FY18E Price to Earnings as compared to ICICI Lombard which is trading around 38 times FY18E PE. Also, It is offering a discount of Rs. 30 per share to retail investors and employees. We remain bullish on the growth of Insurance sector pie in the listed market space. However considering the high valuation we recommend SUBSCRIBE only for LONGTERM

**IOC****"NEUTRAL"****1th Nov 2017**

Indian Oil is the largest petrochemical company with 35% of India's total refining capacity. The company with its strong distribution network of 25000+ outlets, caters about half of the petroleum demand of the India. In Q2FY18 company has posted revenue of Rs. 1,10,637 Cr., growth of 10% YoY where as PAT increased by 18% YoY to Rs.3696 Cr. GRM for Q2FY18 is 7.98 USD/barrel vs 4.3 USD/barrel in same period of FY17. In the last quarter there was a planned shutdown at Panipat, Mathura and Baruni refinery due to the low demand of petroleum products. Paradip refinery has been operated at 97% capacity utilization which indicates that Paradip refinery has now fully stabilized which leaves no further volume growth prospects for the company. Also, high GRM that IOC has been commanding over other refineries due to its new plant should now get stable. Hence we are NEUTRAL keeping the target price intact at Rs440/-. Currently stock is trading at 1.7x FY19's Expected Book value (BV).

*\*For details, refer to our daily report- India Equity Analytics***Top News****>> Dabur's Result Highlights and management outlook:**

Consolidated revenue reported decline of 1.1%, underlying constant currency growth adjusted for GST was 8%.

Underlying growth in India Business revenues was ~10% backed by strong volume growth of 7.2%.

Adjusted for GST and currency translation, the Comparable Consolidated Net Profit marked a 7.2% growth during the quarter.

International Business reported growth of 3.9% on constant currency basis.

Outlook:

In India, the trade channels have largely normalized post the introduction of GST and consumer offtake has been reporting a steady growth.

The medium to long-term prospects, particularly for India, remain robust

**>> INOX CONCALL HIGHLIGHTS:**

Despite indifferent content flow, 2QFY18 saw good growth in Revenue. ATP WAS Rs 186 , 1.3% qoq low below the average annual growth.

Other head per screen goes down on account of cost optimisation measures and saving due to GST.

Pipeline outlook:10 property and 31 screens for rest of the remaining year. strong performance in Q3 on back of strong movies in oct to dec . Balance sheet gives further diversent if needed, enough cash available on account of property hold by inox.

Strong momentum in advertisement & other income will continue.

**>> Biocon Concall 2QFY18:**

Peg-filgrastim (USD 420 mn market) – Mylan-Biocon which was withdrawn as part of the EMA procedural requirements for reinspection will now be refilled.

Capex: Capex would remain high for the next 2-3 years (new biological facility + ~USD200mn for phase 2 expansion of Insulin facility in Bangalore).Maintenance CAPEX will be 100Cr in FY18.

Margin was affected due to the onetime expense related to Malaysian Facility and hike in the employee Cost.

Management expects Syngene growth momentum to continue in the next H2FY18.

The growth of the biologics segment is dependent in H2FY18 is dependent on the regulatory approvals.

Maintained USD200m of revenue guidance from Biologics in FY19E; substantial portion will come from European Market and company is on track to meet that target.

Trustuzumab Tentative target date extended to 3rd December.

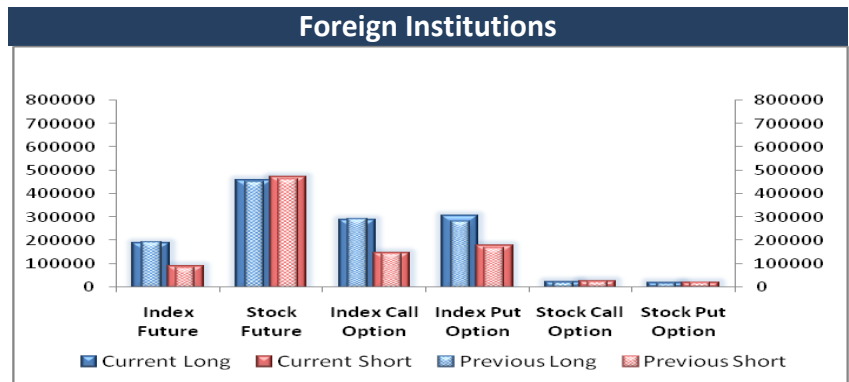
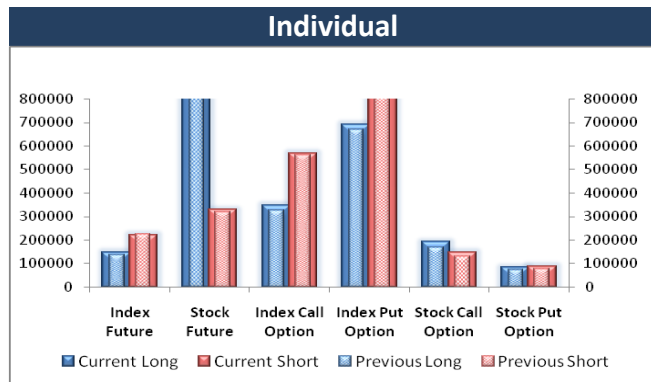
Lack of licensing Income, Regulatory challenges have significantly muted growth of 1HFY18.

**>> Jayant Agro-Organics Mgt Guideline :** Company said Q2 margin impacted due to goods and services tax (GST) and withdrawal of export incentives. Company expects an improvement in margin in Q3 . On revenue front, company expects FY18 revenue at Rs 2,200-2,400 crore. Company crossed 40 percent volume growth in first half of the year. Therefore, expect 20 percent volume growth for FY18

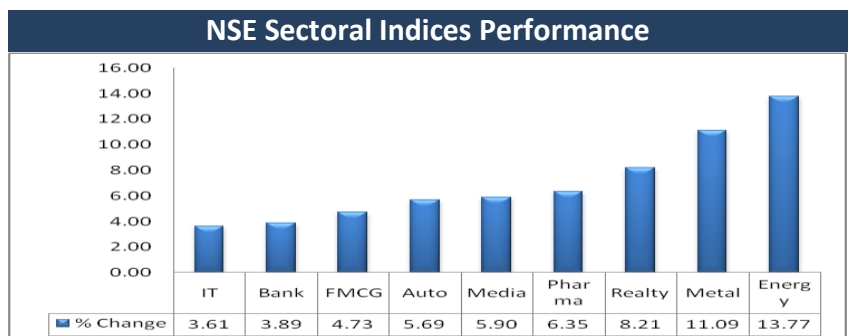
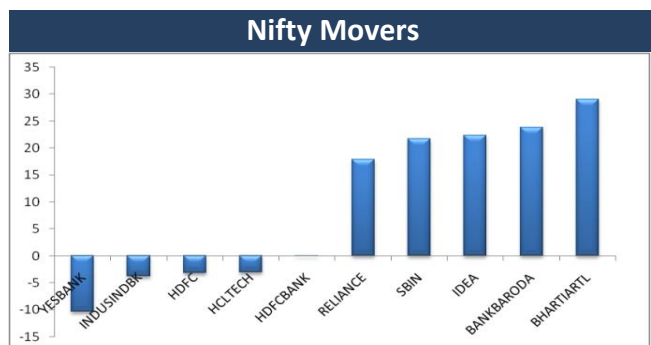
### Block Deal

Exchange	Deal Date	Company	Client Name	Deal Type	Quantity	Price
NSE	31-Oct-17	BOMDYEING	PARIKH BHARATBHAI SURESH HUF	BUY	1147787	197
NSE	31-Oct-17	CYIENT	BIRLA SUN LIFE MUTUAL FUND A/C BIRLA SUN LIFE EQUIT	BUY	1500000	525
NSE	31-Oct-17	CYIENT	FGTEBP FIAM EMERGING MARKETS COMMINGLED POOL	BUY	1762944	525
NSE	31-Oct-17	CYIENT	RELIANCE CAPITAL ASSET MGMT LTD A/C A/C RELIANCE G	BUY	1160000	525
NSE	31-Oct-17	CYIENT	RELIANCE CAPITAL ASSET MGMT LTD A/C RELIANCE EQ OF	BUY	1540000	525
NSE	31-Oct-17	CYIENT	UBS PRINCIPAL CAPITAL ASIA LIMITED	BUY	1252940	525
NSE	31-Oct-17	EXCEL	JAYSHRIBEN DHIRENDRAKUMAR MANIAR	BUY	186371	83
NSE	31-Oct-17	INDIAGLYCO	N.K. SECURITIES	BUY	234835	365
NSE	31-Oct-17	JUSTDIAL	CROSSLAND TRADING CO	BUY	353660	454
NSE	31-Oct-17	MAWANASUG	IVORY CONSULTANTS PVT LTD.	BUY	37170	123
NSE	31-Oct-17	MAWANASUG	M/S MENTOR CAPITAL LIMITED	BUY	250000	122
NSE	31-Oct-17	SAKUMA	BHAVNABEN VIRENDRAKUMAR PATEL	BUY	85000	212
NSE	31-Oct-17	SAKUMA	VISHWAMURTE TRAD INVEST PE LTD	BUY	136809	211
NSE	31-Oct-17	SKIPPER	OCEAN DIAL GATEWAY TO INDIA MAURITIUS LIMITED	BUY	2290000	230
NSE	31-Oct-17	VISHNU	ARKAYA INVESTMENTS	BUY	170785	395
NSE	31-Oct-17	BHUSANSTL	EARC TRUST SC 283	SELL	2403517	67
NSE	31-Oct-17	BOMDYEING	PARIKH BHARATBHAI SURESH HUF	SELL	1147787	196
NSE	31-Oct-17	CYIENT	FIRST CARLYLE VENTURES MAURITIUS	SELL	11099416	525
NSE	31-Oct-17	INDIAGLYCO	N.K. SECURITIES	SELL	234835	365
NSE	31-Oct-17	JUSTDIAL	CROSSLAND TRADING CO	SELL	353660	455
NSE	31-Oct-17	MAWANASUG	IVORY CONSULTANTS PVT LTD.	SELL	195742	123
NSE	31-Oct-17	PRAKASH	BNP PARIBAS ARBITRAGE	SELL	1590000	148
NSE	31-Oct-17	SAKUMA	BHAVNABEN VIRENDRAKUMAR PATEL	SELL	85000	212
NSE	31-Oct-17	SAKUMA	VISHWAMURTE TRAD INVEST PE LTD	SELL	136809	212
NSE	31-Oct-17	SKIPPER	PURUSHOTTAM DISTRIBUTORS PRIVATE LIMITED	SELL	1355650	230
NSE	31-Oct-17	VISHNU	ARKAYA INVESTMENTS	SELL	172668	399

### F&O OPEN INTEREST ( Number of Contracts )



### MARKET MOVERS (1 MONTH CHANGE)



**Result Calendar Q2FY18**

BSE Code	Company Name	Date	BSE Code	Company Name	Date
505665	ABCBEARS	01-Nov-17	532343	TVSMOTOR	01-Nov-17
530431	ADORFO	01-Nov-17	532268	ACCELYA	02-Nov-17
532259	APARINDS	01-Nov-17	500710	AKZOINDIA	02-Nov-17
500877	APOLLOTYRE	01-Nov-17	532418	ANDHRABANK	02-Nov-17
532834	CAMLINFIN	01-Nov-17	502219	BOROSIL	02-Nov-17
513375	CARBORUNIV	01-Nov-17	540700	BRNL	02-Nov-17
517437	DUTRON	01-Nov-17	519600	CCL	02-Nov-17
532927	ECLERX	01-Nov-17	532443	CERA	02-Nov-17
531533	ECOM	01-Nov-17	500097	DALMIASUG	02-Nov-17
513452	ELANGO	01-Nov-17	500645	DEEPAKFERT	02-Nov-17
524768	EMMESSA	01-Nov-17	533146	DLINKINDIA	02-Nov-17
532700	ENIL	01-Nov-17	523736	DPL	02-Nov-17
536507	FLFL	01-Nov-17	503681	ELCIDIN	02-Nov-17
532809	FSL	01-Nov-17	532511	EXCELCROP	02-Nov-17
532309	GEPIL	01-Nov-17	522275	GET&D	02-Nov-17
532424	GODREJCP	01-Nov-17	532296	GLENMARK	02-Nov-17
501455	GREAVESCOT	01-Nov-17	533248	GPPL	02-Nov-17
506076	GRINDWELL	01-Nov-17	533162	HATHWAY	02-Nov-17
533525	HEALTHTECH	01-Nov-17	500185	HCC	02-Nov-17
500182	HEROMOTOCO	01-Nov-17	509631	HEG	02-Nov-17
532129	HEXAWARE	01-Nov-17	500184	HSCL	02-Nov-17
524735	HIKAL	01-Nov-17	532835	ICRA	02-Nov-17
532100	INDOCITY	01-Nov-17	520066	JAYBARMARU	02-Nov-17
533148	JSWENERGY	01-Nov-17	532642	JSWHL	02-Nov-17
500243	KIRLOSIND	01-Nov-17	500249	KSBPUMPS	02-Nov-17
521018	MARALOVER	01-Nov-17	503772	MODWOOL	02-Nov-17
539981	MAXINDIA	01-Nov-17	524816	NATCOPHARM	02-Nov-17
533088	MHRIL	01-Nov-17	526721	NICCOPAR	02-Nov-17
532742	PAUSHAKLTD	01-Nov-17	535754	ORIENTCEM	02-Nov-17
537839	PHOENIXTN	01-Nov-17	503031	PENINLAND	02-Nov-17
538771	PINCON	01-Nov-17	532898	POWERGRID	02-Nov-17
539007	PINCONLIFE	01-Nov-17	507962	RAJATH	02-Nov-17
532934	PPAP	01-Nov-17	500260	RAMCOCEM	02-Nov-17
522205	PRAJIND	01-Nov-17	532369	RAMCOIND	02-Nov-17
514354	PREMIERPOL	01-Nov-17	532699	ROHLTD	02-Nov-17
540366	RADIOCITY	01-Nov-17	532735	RSYSTEMINT	02-Nov-17
532370	RAMCOSYS	01-Nov-17	515043	SAINTGOBAIN	02-Nov-17
532419	SMARTLINK	01-Nov-17	522034	SHANTIGEAR	02-Nov-17
511218	SRTRANSFIN	01-Nov-17	532498	SHRIRAMCIT	02-Nov-17
517168	SUBROS	01-Nov-17	531219	SHYAMAINFO	02-Nov-17
540212	TCIEXP	01-Nov-17	503229	SIMPLXREA	02-Nov-17
532755	TECHM	01-Nov-17	534680	SRGHFL	02-Nov-17
526650	TFCILTD	01-Nov-17	536710	SRGSFL	02-Nov-17
539488	TFLL	01-Nov-17	513517	STEELCAS	02-Nov-17
538597	TTIENT	01-Nov-17	500403	SUNDRMFAST	02-Nov-17

532390	TAJGVK	02-Nov-17	504959	STOVACQ	03-Nov-17
532349	TCI	02-Nov-17	530883	SUCROSA	03-Nov-17
533393	TCIDEVELOP	02-Nov-17	500400	TATAPOWER	03-Nov-17
512117	TWIROST	02-Nov-17	500114	TITAN	03-Nov-17
539874	UJJIVAN	02-Nov-17	500420	TORNTPHARM	03-Nov-17
512511	VARUNME	02-Nov-17	521064	TRIDENT	03-Nov-17
500295	VEDL	02-Nov-17	532505	UCOBANK	03-Nov-17
538778	AKASHDEEP	03-Nov-17	506690	UNICHEMLAB	03-Nov-17
538777	ASIACAP	03-Nov-17	532477	UNIONBANK	03-Nov-17
505688	BHARATGEAR	03-Nov-17	539118	VRLLG	03-Nov-17
531556	CORALFINAC	03-Nov-17	511147	WSFIN	03-Nov-17
532922	EDELWEISS	03-Nov-17	504067	ZENSARTECH	03-Nov-17
523754	EPCIN	03-Nov-17	532774	AFL	04-Nov-17
531953	GCCL	03-Nov-17	500012	ANDHRAPET	04-Nov-17
531375	GCCLINP	03-Nov-17	500016	ARUNAHTEL	04-Nov-17
500174	GLFL	03-Nov-17	526433	ASMTEC	04-Nov-17
540743	GODREJAGRO	03-Nov-17	524606	BERLDRG	04-Nov-17
533150	GODREJPROP	03-Nov-17	531582	BERYLSE	04-Nov-17
511441	GUJCRED	03-Nov-17	517236	CALCOM	04-Nov-17
500440	HINDALCO	03-Nov-17	531067	CONTILI	04-Nov-17
517526	INDITALIA	03-Nov-17	532240	INDNIPPON	04-Nov-17
506528	KELENRG	03-Nov-17	539083	INOXWIND	04-Nov-17
500245	KIRLFER	03-Nov-17	521248	KITEX	04-Nov-17
504258	LAKSELEC	03-Nov-17	517206	LUMAXIND	04-Nov-17
540648	PALASHSEC	03-Nov-17	532892	MOTILALOFS	04-Nov-17
532911	PARLESOFT	03-Nov-17	524709	NACLIND	04-Nov-17
532810	PFC	03-Nov-17	524654	NATCAPSUQ	04-Nov-17
532461	PNB	03-Nov-17	539333	PENPEBS	04-Nov-17
531562	PUSHPIN	03-Nov-17	531768	POLYMED	04-Nov-17
523598	SCI	03-Nov-17	530517	RELAXO	04-Nov-17
540203	SFL	03-Nov-17	504614	SARDAEN	04-Nov-17
520086	SICAL	03-Nov-17	530075	SELAN	04-Nov-17
532795	SITINET	03-Nov-17	513709	SHILGRAVQ	04-Nov-17
514454	SOUTLAT	03-Nov-17	533389	SHILPI	04-Nov-17
517214	SPICEMOBI	03-Nov-17	534392	VSSL	04-Nov-17

### Earning Estimate Q2FY18

BSE Code	Company Name	Sale ( Cr. )	Sales Growth ( % )	PAT ( Cr. )	PAT Growth ( % )
31-Oct-17	AJANTPHARM	499.90	(3.10)	104.80	(19.80)
31-Oct-17	BHARTIARTL	21695.20	(12.00)	208.60	(85.80)
31-Oct-17	BLUESTARCO	961.00	8.10	30.70	53.50
31-Oct-17	CAPF	455.20	44.50	74.90	30.10
31-Oct-17	CHOLAFIN	721.90	23.10	213.30	24.80
31-Oct-17	CONCOR	1548.20	12.30	262.20	66.10
31-Oct-17	DABUR	2025.10	2.50	381.00	6.70
31-Oct-17	DBCORP	551.20	2.30	89.30	0.90
31-Oct-17	DIVISLAB	922.40	(7.00)	216.10	(28.70)
31-Oct-17	DRREDDY	3737.40	4.20	346.90	6.90

31-Oct-17	ESCORT	1194.40	20.00	65.70	91.30
31-Oct-17	INDIGO	4965.90	19.20	219.80	57.20
31-Oct-17	JSWSTEEL	14909.40	12.70	1162.50	60.00
31-Oct-17	NAUKRI	231.30	10.20	66.70	(16.70)
31-Oct-17	SANOFI	691.10	10.70	88.90	10.30
31-Oct-17	STAR	895.20	(6.10)	43.90	(40.70)
01-Nov-17	RADIOCITY	87.20	7.70	12.10	(25.20)
01-Nov-17	ENIL	126.60	(2.30)	6.60	(17.00)
01-Nov-17	GODREJCP	2674.40	13.50	379.80	18.30
01-Nov-17	HEROMOTOCO	8614.60	10.50	1001.70	(0.30)
01-Nov-17	JSWENERGY	2067.10	1.00	204.30	(6.00)
01-Nov-17	SRTRANSFIN	1616.10	19.40	471.70	21.70
01-Nov-17	TVSMOTORS	4030.40	17.60	220.90	24.50
02-Nov-17	GET&D	930.00	11.50	37.00	79.80
02-Nov-17	GLENMARK	2316.00	6.60	186.30	(15.10)
02-Nov-17	POWERGRID	7254.20	16.40	2089.70	11.40
02-Nov-17	RAMCOCEM	993.10	(1.90)	141.40	(31.70)
02-Nov-17	SHRIRAMCIT	842.10	14.60	230.70	12.80
02-Nov-17	VEDL	21307.30	34.30	2208.50	76.40
03-Nov-17	TATAPOWER	7108.00	(1.40)	544.40	61.90
03-Nov-17	HINDALCO	26612.20	9.90	1107.30	126.20
03-Nov-17	PNB	3916.70	0.90	415.90	(24.30)
03-Nov-17	SITICABLE	351.60	21.70	(26.50)	Loss
03-Nov-17	TITAN	3031.90	15.00	189.20	3.00
03-Nov-17	TORNTPHARM	1646.10	17.10	240.80	16.30
03-Nov-17	UNIONBANK	2319.70	1.90	116.90	(33.90)

### Result Q2FY18

BSE Code	Company Name	Sale ( Cr. )	Sales Growth ( % )	PAT ( Cr. )	PAT Growth ( % )
500214	IONEXCHANG	217.08	3.13	7.92	(10.31)
500875	ITC	10226.41	7.25	2639.84	5.59
500238	WHIRLPOOL	1159.67	37.50	73.45	25.09
502450	SESHAPAPER	227.28	(12.62)	26.26	(14.43)
590071	SUNDARMFN	645.68	10.02	159.98	25.30
506222	STYABS	482.62	22.72	16.97	(11.61)
511196	CANFINHOME	383.85	15.49	74.99	36.20
512527	SUPER	55.86	(4.51)	7.2	1.98
509438	BENARAS	7.15	(20.56)	-0.44	(218.92)
506532	KERALACHEM	80.67	(8.92)	4.6	(41.70)
500186	HINDOILEXP	8.40	51.35	5.58	(57.44)
532497	RADICO	448.19	0.62	28.6	27.05
500408	TATAELXSI	342.15	12.47	57.24	25.91
523756	SREINFRA	1252.82	13.26	86.11	39.18
500209	INFY	17567.00	1.48	3726	3.33
505537	ZEEL	1582.05	(6.69)	590.8	147.82
505526	DOLATINVES	16.14	(67.53)	10.43	485.96
513605	Srikalahas. Pip.	340.33	94.59	37.17	43.07



524663	BIBCL	5.31	(51.77)	-2.39	(254.19)
517522	RAJGLOWIR	90.44	24.54	5.76	30.61
516108	SIPAPER	26.60	(45.20)	-1.08	(145.19)
526899	HIMIN	20.48	(39.14)	-4.64	(718.67)
530803	BHAGERIA	88.77	3.91	9.21	(43.88)
533167	COROENGG	9.07	1.00	-2.8	37.93
532900	SEINV	81.49	24.28	22.86	32.68
532764	GEECEE	15.63	(26.48)	5.11	(33.55)
531950	VERTEX	1.73	3.59	0.24	84.62
532689	PVR	555.36	2.13	25.17	(13.59)
532523	BIOCON	968.60	2.41	68.8	(53.10)
532323	SHIVACEM	3.66	(41.81)	-8.6	227.00
532638	SHOPERSTOP	837.58	(12.24)	-21.81	(304.02)
540133	ICICIPRULI	6539.51	20.60	421.21	0.58
532812	TFL	4.06	71.31	-0.26	52.94
532899	KSCL	69.60	2.72	20.91	170.16
533228	BHARATFIN	463.28	13.72	119.4	(18.15)
533121	SQS India BFSI	69.70	1.90	7.4	21.31
539844	EQUITAS	417.31	8.54	10.91	(76.46)
533320	JUBLINDS	123.00	(8.25)	2.5	(50.59)
535755	PFRL	1804.00	(3.89)	-10	(115.38)
537291	NATHBIOGEN	14.39	(12.52)	3.56	345.00
539876	CROMPTON	959.71	9.84	70.8	23.28
532454	BHARTIARTL	21776.00	(11.66)	586.1	(59.88)
500067	BLUESTARCO	835.00	(4.68)	20.78	3.95
532938	CAPF	880.18	29.15	78.48	36.32
511243	CHOLAFIN	1312.71	13.03	228.17	36.07
500096	DABUR	1958.39	(0.88)	362.67	1.51
533151	DBCORP	568.30	9.07	78.6	(11.21)
523127	EIHAHOTELS	46.55	(6.00)	-1.41	(185.98)
500124	DRREDDY	3490.50	(2.65)	305.4	(1.13)
500495	ESCORTS	1211.68	23.83	77.55	147.84
509525	EMPIND	58.52	5.42	9.03	18.04
532636	IIFL	1585.53	30.58	290.92	40.54
539448	INDIGO	5290.90	27.51	551.5	294.35
532706	INOXLEISUR	311.00	11.57	11.68	648.72
500228	JSWSTEEL	16818.00	29.50	836	15.08
532400	KPIT	916.00	10.43	60.3	7.33
500250	LGBBROSLTD	347.79	17.80	23.33	10.36
532777	NAUKRI	251.00	19.52	78.5	(1.96)
532805	REDINGTON	10544.00	8.42	136.91	36.62

500123	DRBECK	91.16	0.20	13.27	(13.15)
532630	GOKEX	260.69	52.54	-9.27	(66.62)
500010	HDFC	16583.00	21.89	2869	17.28
509675	HIL	256.46	20.50	9.43	2.84
505726	IFBIND	602.78	38.82	36.57	105.45
500199	IGPL	240.88	(5.07)	33.41	64.91
500233	KAJARIACER	671.30	6.79	56.95	(10.48)
532889	KPRMILL	742.63	1.22	73.5	(9.47)
500257	LUPIN	3874.40	(8.00)	458.8	(30.71)
532313	MAHLIFE	100.00	(20.31)	14	(56.48)
531642	MARICO	1536.00	6.74	185.04	2.48
513023	NBVENTURES	511.47	61.02	26.63	326.08
509930	SUPREMEIND	1055.06	20.14	59.81	(9.65)
512070	UPL	3770.00	8.40	238	43.24
532300	WOCKPHARMA	1022.88	(3.93)	-3.33	(119.57)

Economic Calendar					
Country	Monday 30th Oct 17	Tuesday 31th Oct 17	Wednesday 1th Nov 17	Thursday 2th Nov 17	Friday 3th Nov 17
US	Core PCE Price Index m/m , Personal Spending m/m , Personal Income m/m , Loan Officer Survey	Employment Cost Index q/q , S&P/CS Composite-20 HPI y/y, Chicago PMI , CB Consumer Confidence	ADP Non-Farm Employment Change , ISM Manufacturing PMI, Construction Spending m/m, Crude Oil Inventories , FOMC Statement, Federal Funds Rate	Prelim Nonfarm Productivity q/q , Prelim Unit Labor Costs q/q , Challenger Job Cuts y/y , Natural Gas Storage.	Average Hourly Earnings m/m , Non-Farm Employment Change , Unemployment Rate , Trade Balance , ISM Non- Manufacturing PMI , Factory Orders m/m.
UK/EURO ZONE	German Retail Sales m/m , German Import Prices m/m , French Prelim CPI m/m , Spanish Flash CPI y/y , German Unemployment Change, Net Lending to Individuals m/m , M4 Money Supply m/m	CPI Flash Estimate y/y , Core CPI Flash Estimate y/y , EU Economic Forecasts , Prelim Flash GDP q/q , Unemployment Rate	Italian Manufacturing PMI , French Final Manufacturing PMI, German Final Manufacturing PMI , Manufacturing PMI , Spanish Manufacturing PMI.	Construction PMI , BOE Inflation Report , MPC Official Bank Rate Votes , Monetary Policy Summary , Official Bank Rate , BOE Gov Carney Speaks.	Services PMI , Spanish Services PMI , Italian Services PMI , French Final Services PMI , German Final Services PMI.
INDIA			Auto no, Nikkei Manufacturing PMI.	Auto no,	





## Narnolia Securities Ltd

201 | 2nd Floor | Marble Arch Building | 236B-AJC Bose  
Road | Kolkata-700 020 , Ph : 033-40501500

email: [narnolia@narnolia.com](mailto:narnolia@narnolia.com),  
website : [www.narnolia.com](http://www.narnolia.com)

**Risk Disclosure & Disclaimer:** This report/message is for the personal information of the authorized recipient and does not construe to be any investment, legal or taxation advice to you. Narnolia Securities Ltd. (Hereinafter referred as NSL) is not soliciting any action based upon it. This report/message is not for public distribution and has been furnished to you solely for your information and should not be reproduced or redistributed to any other person in any form. The report/message is based upon publicly available information, findings of our research wing "East wind" & information that we consider reliable, but we do not represent that it is accurate or complete and we do not provide any express or implied warranty of any kind, and also these are subject to change without notice. The recipients of this report should rely on their own investigations, should use their own judgment for taking any investment decisions keeping in mind that past performance is not necessarily a guide to future performance & that the the value of any investment or income are subject to market and other risks. Further it will be safe to assume that NSL and /or its Group or associate Companies, their Directors, affiliates and/or employees may have interests/ positions, financial or otherwise, individually or otherwise in the recommended/mentioned securities/mutual funds/ model funds and other investment products which may be added or disposed including & other mentioned in this report/message.