

SGX NIFTY : 7998.50 ( 19 Pt Up )

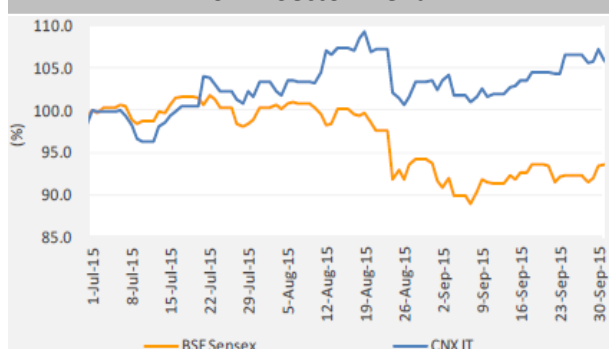
**Quote of the Day**

"Charlie and I decided long ago that in an investment lifetime it's too hard to make hundreds of smart decisions. That judgment became ever more compelling as Berkshire's capital mushroomed and the universe of investments that could significantly affect our results shrank dramatically. Therefore, we adopted a strategy that required our being smart - and not too smart at that - only a very few times. Indeed, we'll now settle for one good idea a year."

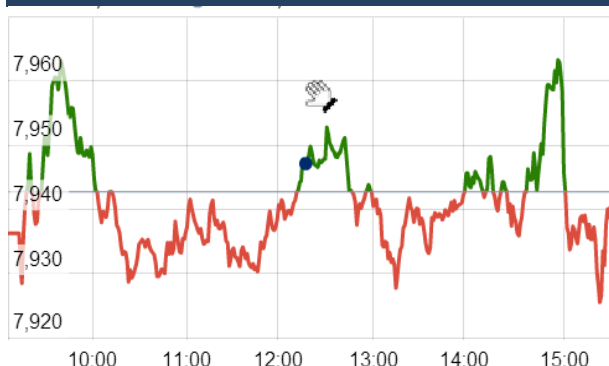
Warren Buffett

**Chart of the Day**

**BSE IT Sector Trend**



**Index Action Nifty ( 30th Nov 15 )**



**Index**

Contents	Page	Coverage
News	2	Update
Economic Calendar	3	Update

**Market**

Name	Value	Change
Sensex	26,145.67	17.47
Nifty	7935.25	(7.45)
DOW	17,721.85	(77.37)
NASDAQ	5,108.67	(18.86)
CAC	4,957.60	27.50
DAX	11,382.23	88.47
FTSE	6,356.09	(19.06)
NIKKEI	19,950.57	204.43
HANG SENG	22,275.48	279.68
EW ALL SHARE	13876.86	2.77

**Instituional Turnover**

**FII**

Investor	Buy(Cr.)	Sale(Cr.)	Net(Cr.)
30-Nov-15	13538.84	14582.68	(1043.84)
Nov,15	13877.17	15558.39	(1681.22)
2015	988252.93	994153.37	(6067.14)

**DII**

Investor	Buy(Cr.)	Sale(Cr.)	Net(Cr.)
30-Nov-15	2977.78	2376.05	601.73
Nov,15	5999.38	4942.44	93.35
2015	399587.89	349062.80	50711.36

**Commodity Price**

Commodity/Currencies	Value	
GOLD	25079.00	↑
SILVER	33490.00	↓
CRUDEOIL	41.81	↓
COPPER	307.55	↓
NATURALGAS	150.30	↑
DOLLAR/RS.	66.67	↓
EURO/RS.	70.31	↑
POUND/RS.	100.34	↑

## Market Snapshot

### Top Price Performers

Top Performers 1D	% Change	Top Performers 1W	% Change	Top Performers 1M	% Change
HANUNG	20.00	RPGLIFE	56.24	MUDRA	80.59
SUJANATOW	20.00	BLKASHYAP	55.30	MANUGRAPH	73.94
MEGASOFT	19.85	NELCO	47.59	SHIVTEX	70.20
ICSA	19.07	JCTEL	42.86	ALLSEC	65.97
SUBEX	18.23	COUNCLB	42.20	MOREPENLAB	62.97

Worst Performers 1D	% Change	Worst Performers 1W	% Change	Worst Performers 1M	% Change
TREEHOUSE	(19.98)	SUDAR	(35.64)	SARLAPOLY	(89.48)
SUDAR	(18.81)	MAWANASUG	(20.41)	HELIOSMATH	(50.96)
GLOBALCA	(9.93)	JAIBALAJI	(15.19)	SHILPAMED	(48.51)
EON	(9.70)	RAJSREESUG	(14.94)	PLETHICO	(46.56)
SURYACHAKRA	(9.66)	RANASUG	(14.70)	EROSMEDIA	(46.19)

## Top News

- **Bharti Airtel** has committed to spend Rs 60,000 crore of investments for its mega network transformation program called Project Leap in coming three years. The company said this project will involve modernisation of network, implementing more efficient technology to reduce carbon footprint by over 70 percent, bringing fiber network and improving home broadband system.

The company has invested Rs 1.6 lakh crore on the project since its inception this year already and plans to deploy 1.6 lakh base stations in next three years. In 2015-16, Airtel rolled out nearly 70,000 base stations across its various networks.

- **Tribhovandas Bhimji Zaveri** will be adopting a mix of company-owned stores and franchise stores to expand its domestic operations. The major part of expansion will be done through addition of franchisee stores. This will enable the company to increase its geographical footprint and help in improving return ratios . With addition of three stores since October, currently it has 30 stores in 10 states.

- **Ashok Leyland** has bagged order for 3,600 vehicles worth USD 200million (about Rs 1,335 crore) from Cote D'Ivoire. Ashok Leyland has signed a contract with the government of the West African nation, also know as the Ivory Coast, for supply of the vehicles which include trucks and buses and will be delivered over the next 12 months . The company is looking forward to building the contract with Cote D'Ivoire as a base for further growth in West Africa

- **Rajesh Exports** has bagged an export order worth Rs 1,122 crore of designer range of gold and diamond studded jewellery and medallions from the UAE . It added that this order is to be completed by March 2016 and it will be executed at the company's manufacturing facility at Bangalore.

- **KEC International**, has in October, revised its FY16 revenue guidance from 10-15 percent to 10 percent. KEC International says commodity prices and sluggish order inflow are hitting business. The company is aiming for operating margins around 8 percent on the back of improved execution in domestic business and fixed price impact in its international market . With a robust tender pipeline from the Middle East, the company's L1 orders stand at Rs 3,000 crore

- **Tata Motors** will launch its new compact car Zica early next year as part of its drive to enhance position in the passenger vehicles segment. Engineered on a new platform, the new model is expected to be available in both petrol and diesel engine options. Zica will add to Tata Motors' new model line up -- Zest and Bolt -- in its passenger cars portfolio besides the previous generation cars Indica Vista and the Indigo along with the new Nano.

- **CCI** has rejected allegations of anti-competitive business practice against two DLF Group firms. Dismissing the complaint, CCI said there is no "prima facie" case of violation of competition norms. The complaint pertained to abuse of dominant position by DLF Qutab Enclave Complex Educational Charitable Trust and DLF Ltd for leasing plots for developing and running creches/ play school in residential areas.

- **Chinese Manufacturing PMI** fell to an annual rate of 49.6, from 49.8 in the preceding month. Analysts had expected Chinese Manufacturing PMI to remain unchanged at 49.8 last month.

- **South Korean Trade Balance** rose to a seasonally adjusted 10.40B, from 6.70B in the preceding quarter. Analysts had expected South Korean Trade Balance to rise to 6.72B in the last quarter.

- **Japanese capital spending** rose to an annual rate of 11.2%, from 5.6% in the preceding quarter. Analysts had expected Japanese capital spending to fall to 2.3% in the last quarter.

- **Argentinian Industrial Production** fell to -2.6%, from 0.2% in the preceding month. Analysts had expected Argentinian Industrial Production to fall to -0.2% last month.

- **U.K . GDP** rose to 0.5%, from 0.5% in the preceding quarter. Analysts had expected U.K.'s gross domestic product to rise 0.5% in the last quarter.

### Economic Calendar

Country	Monday 30th Nov 15	Tuesday 1th Dec 15	Wednesday 2th Dec 15	Thursday 3th Dec 15	Friday 4th Dec 15
<b>US</b>	Pending Home Sales m/m	ISM Manufacturing PMI , Construction Spending m/m , FOMC Member Evans Speaks .	ADP Non-Farm Employment Change , Fed Chair Yellen Speaks , Revised Nonfarm Productivity q/q .	Unemployment Claims , Fed Chair Yellen Testifies , ISM Non-Manufacturing PMI	Average Hourly Earnings m/m , Non-Farm Employment Change , Unemployment Rate
<b>UK/EURO ZONE</b>	German Retail Sales m/m , German Prelim CPI m/m , Net Lending to Individuals m/m	Bank Stress Test Results , BOE Financial Stability R eport , Spanish Manufacturing PMI , German Unemployment Change .	Spanish Unemployment Change , Construction PMI , Core CPI Flash Estimate y/y	Services PMI , Minimum Bid Rate , ECB Press Conference .	German Factory Orders m/m ,
<b>INDIA</b>		Auto Sales No . HSBC Manufacturing PMI No			

## Narnolia Securities Ltd.

**Narnolia Research Lab**  
Stellar IT Park | 5th Floor | Office Space No. 6 | Tower-I/nd Plot No. C-25 | Sector-62 |  
Noida | Ph : 0120-4215110

**Central Strategy Desk - Kolkata**  
124 | 1st Floor | 7/1 Lords Sinha Road | Kolkata - 71  
Ph : 033-22821500 | M : 93347 14418, 98302 69810