

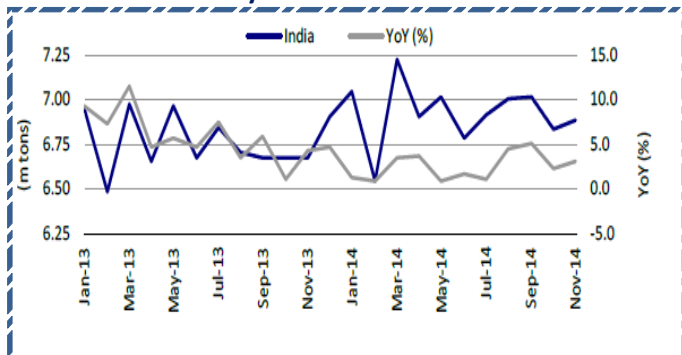
SGX NIFTY : 8821
(58 pts Down)

Quote of the Day

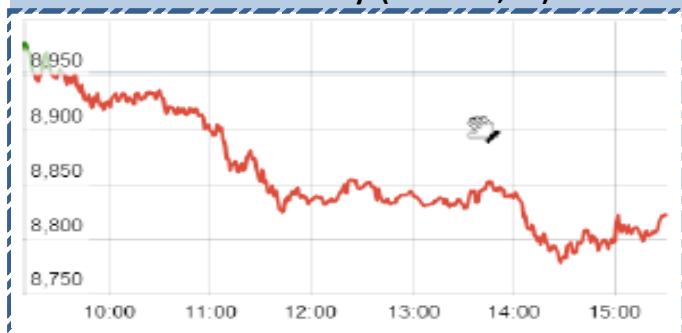
"Acknowledging what you don't know is the dawning of wisdom." **Charlie Munger**

Chart of the Day

Indian Monthly Crude Steel Production Trend



Index Action-Nifty (30 th Jan, 15)



Index

| Contents | Page | Coverage |
|------------------------|----------|----------|
| News | 3 | UPDATE |
| Result Calendar Q3FY15 | 4 to 14 | UPDATE |
| Result Q3FY15 | 15 to 17 | UPDATE |
| Economic Calendar | 14 | UPDATE |
| | | |
| | | |

MARKET

| Name | Value | Change |
|--------------|----------|----------|
| Sensex | 29182.95 | (498.82) |
| Nifty | 8808.9 | (143.35) |
| DOW | 17164.53 | (251.90) |
| NASDAQ | 4635.24 | (48.17) |
| CAC | 4604.25 | (27.18) |
| DAX | 10694.32 | (43.55) |
| FTSE | 6749.4 | (61.20) |
| NIKKEI | 17574.95 | (99.44) |
| HANG SENG | 24339.2 | (167.73) |
| EW ALL SHARE | 14081.35 | (49.28) |

INSTITUTIONAL TURNOVER

| FII | | | |
|----------|----------|-----------|-----------|
| Investor | Buy(Cr.) | Sale(Cr.) | Net(Cr.) |
| 30th Jan | 6145.72 | 6,917.27 | (771.55) |
| Jan,15 | 75199.50 | 68,222.15 | 6977.35 |
| 2015 | 75199.50 | 68,222.15 | 6977.35 |
| DII | | | |
| Investor | Buy(Cr.) | Sale(Cr.) | Net(Cr.) |
| 30th Jan | 2281.99 | 2,319.59 | (37.60) |
| Jan,15 | 28023.28 | 32,111.32 | (4088.04) |
| 2015 | 28023.28 | 32,111.32 | (4088.04) |

COMMODITY PRICE

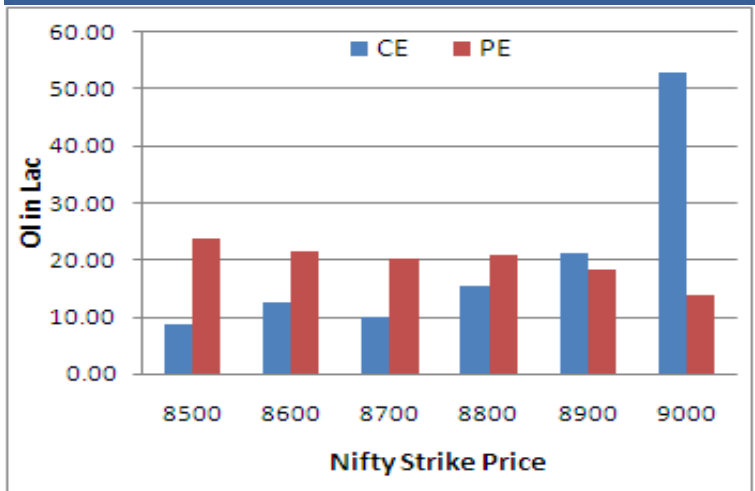
| COMMODITY/CURRENCIES | Value | |
|----------------------|----------|---|
| GOLD | 27896.00 | ↑ |
| SILVER | 38105.00 | ↑ |
| CRUDEOIL | 46.78 | ↓ |
| COPPER | 342.55 | ↑ |
| NATURALGAS | 168.40 | ↑ |
| DOLLAR/RS. | 61.86 | ↑ |
| EURO/RS. | 70.24 | ↑ |
| POUND/RS. | 93.56 | ↑ |

Narnolia Securities Ltd.

| NIFTY SNAPSHOT | |
|------------------------------|------------------|
| Nifty Spot | 8808.90(-143.45) |
| Nifty Feb 2014 Future | 8887 |
| Nifty Mar 2014 Future | 8945 |
| Nifty Feb 2014 Open Interest | 25504975 |
| Nifty Mar 2014 Open Interest | 594575 |
| 7 DMA of Spot Nifty | 8844 |
| 21 DMA of Spot Nifty | 8517 |
| 50 DMA of Spot Nifty | 8422 |
| VOLATILITY INDEX (VIX) | 20.17(+0.74) |
| PUT CALL RATIO | 1.05 |



Nifty (Feb Series) Option OI Distribution:



Activity of Nifty (Feb Series) Strike

| Strike | CALL | | PUT | |
|--------|---------|--------|---------|--------|
| | OI | % Chng | OI | % Chng |
| 8500 | 853700 | 13.31 | 2376550 | 6.15 |
| 8600 | 1248075 | -1.41 | 2163925 | 5.82 |
| 8700 | 1007550 | 4.98 | 2014150 | 9.53 |
| 8800 | 1547375 | -50.58 | 2091600 | -8.10 |
| 8900 | 2132200 | 8.46 | 1831950 | 2.41 |
| 9000 | 5290300 | 34.39 | 1383800 | -48.34 |

FII's Activity (Fig in Cr)

| Segment | Buy | Sell | Net |
|--------------|---------------|---------------|-------------|
| INDEX FUTURE | 2,091 | 2,019 | 72 |
| INDEX OPTION | 16,204 | 14,886 | 1,318 |
| STOCK FUTURE | 3,227 | 4,835 | (1,608) |
| STOCK OPTION | 2,389 | 2,250 | 139 |
| TOTAL | 23,910 | 23,989 | (79) |

Fresh Long Seen In (Rising OI -Rising Price)

| Scrip | OI | OI ch% | CMP | Ch% |
|-------|----|--------|-----|-----|
|-------|----|--------|-----|-----|

Fresh Shorts Seen In: (Rising OI -Falling Price)

| Scrip | OI | OI ch% | CMP | Ch% |
|-------|----|--------|-----|-----|
|-------|----|--------|-----|-----|

PCR (OI)

| STOCK | T1 | T2 |
|----------|------|------|
| UBL | 2.44 | 0.75 |
| PETRONET | 0.59 | 0.20 |
| UCOBANK | 0.67 | 0.29 |
| TATACOMM | 0.32 | 0.16 |
| IGL | 0.64 | 0.34 |

PCR (OI)

| STOCK | T1 | T2 |
|------------|------|------|
| IOB | 0.80 | 4.81 |
| DIVISLAB | 0.05 | 0.29 |
| IBREALEST | 0.15 | 0.66 |
| WIPRO | 0.20 | 0.87 |
| ORIENTBANK | 0.42 | 1.76 |

Markets Snapshot

Top Price Performers

| Top Performers 1D | % Change | Top Performers 1W | % Change | Top Performers 1M | % Change |
|-------------------|----------|-------------------|----------|-------------------|----------|
| LKPMERFIN | 19.99 | HDIL | 39.97 | NTCIND | 214.48 |
| PBAINFRA | 19.90 | RJL | 36.01 | INDOSOLAR | 121.09 |
| HCC | 19.18 | ELECTHERM | 34.22 | ISFT | 107.60 |
| HDIL | 14.12 | RUSHIL | 29.44 | KGIND | 101.13 |
| RJL | 13.68 | GEOJITBNPP | 28.52 | ALKALI | 90.69 |

Worst Price Performers

| Worst Performers 1D | % Change | Worst Performers 1W | % Change | Worst Performers 1M | % Change |
|---------------------|----------|---------------------|----------|---------------------|----------|
| SRSREAL | (18.29) | MAHAPOL | (31.38) | OUTCTYTRVL | (60.47) |
| BANKBARODA | (11.08) | INDINFO | (25.00) | MAHAPOL | (53.18) |
| TFL | (9.74) | FARMAXIND | (21.92) | PRITI | (50.34) |
| ISIBARS | (9.20) | PRITI | (21.69) | SPECTACLE | (45.83) |
| VIPIND | (9.15) | RSSOFTWARE | (20.73) | AADHAARVEN | (42.42) |

Top News :

- **Dr Reddy Mgt Guideline** : Company has done well in Russia, posting a volume growth of 30 percent in local currency terms, and the whole impact of currency devaluation has not fully played out. Mgt however feels the Russian market looks challenging currently. Venezuela has done extremely well . There are risks in this market but any risk is accompanied with opportunities . Opportunities is that in Venezuela , the brands are well accepted but risk factor is that there are three different rates of currency. The Canada health import is banned . But Company hardly have any business in Canada and this would not have any material impact and Company has complied with whatever was the request .

- **HCC Mgt Guideline** : The company aims to achieve order book target of Rs 15000 crore in FY15. Current order book for the company stands at Rs 14000 crore. Sood is a bit disappointed with order inflows on the nuclear power and hydel project side but hopes that with US President visiting India there could be development in nuclear power projects. The only space that saw momentum in terms of orders was roads . Going forward post Budget he expects a pick up in order inflows.

- **Transport Corp Mgt Guideline** : Company says the poor number has come on oscillating volumes. Company expects Q4 to be better both on a quarter-on-quarter basis as well as on a yearly basis. Companies have started to relook their plans. Company is planning capital expansion and are now looking at warehousing, so Company expects much better volumes now .

- **Strides Arcolab Ltd** has informed that the Company's Oral Dosage Facility (KRS Gardens) at Bangalore has been found acceptable by the United States Food and Drug Administration (US FDA). The inspection was carried out in August 2014. The Oral Dosage facility in Bangalore manufactures oral dosage forms such as tablets, capsules (both hard gelatine and soft gelatine) and sachets. The manufacturing plant supports important current and future submissions for the US Market.

- **Adani Enterprises** —the flagship of the USD 9.4 billion Adani Group—Friday announced a complex restructuring of its various businesses in an attempt to simplify its corporate restructure. Under the terms of the recast, Adani Enterprises (AEL) port business will be transferred to subsidiary Adani Ports and Special Economic Zone , its power businesses to Adani Power (APL), and transmission business to unlisted Adani Transmissions, which will subsequently be listed.

- **Gujarat State Fertilizers & Chemicals** is proposing to set up 40,000 MTPA Melamine Project at an estimated cost of Rs. 900 Crores. The setting up of this project would be the import substitution for the Company. The project is expected to be commissioned in 3rd quarter of FY 2017-18.

- **Divis Laboratories Ltd** is considering setting up a third manufacturing site to augment capacities besides derisking its business. The Company made an application to the Govt. of Andhra Pradesh for allotment of land near Kakinada and the Company is awaiting favourable response. The Company proposes to make an initial investment of Rs. 500 crores on this facility.

- **China the final HSBC/Markit Purchasing Managers' Index (PMI) for January** came in at 49.7 on a seasonally adjusted basis, just below the 50.0 level that separates

- **U.S. Department of Labor** said the number of individuals filing for initial jobless benefits in the week ending January 24 decreased by 43,000 to a seasonally adjusted 265,000 from the previous week's total of 308,000.

Result Calendar Q3FY15

| Bse Coade | Company Name | Date | Bse Coade | Company Name | Date |
|-----------|---------------|-----------|-----------|--------------|-----------|
| 511756 | ABIRAFN | 02-Feb-15 | 526739 | SHAWGELTIN | 02-Feb-15 |
| 532840 | ADVANTA | 02-Feb-15 | 526137 | SHETR | 02-Feb-15 |
| 513309 | ALUMECO-\$ | 02-Feb-15 | 503229 | SIMPLXREA | 02-Feb-15 |
| 533068 | ARROWTEX | 02-Feb-15 | 531359 | SRAMSET | 02-Feb-15 |
| 520119 | ASAL | 02-Feb-15 | 504908 | SSDUNC-\$ | 02-Feb-15 |
| 509009 | AUSOMENT | 02-Feb-15 | 532531 | STAR | 02-Feb-15 |
| 511724 | BALFC | 02-Feb-15 | 513530 | STELCOST | 02-Feb-15 |
| 523186 | BAPACK | 02-Feb-15 | 533306 | SUMMITSEC | 02-Feb-15 |
| 506285 | BAYERCROP | 02-Feb-15 | 512527 | SUPER-\$ | 02-Feb-15 |
| 500493 | BHARATFORG | 02-Feb-15 | 530677 | SUPREME | 02-Feb-15 |
| 532443 | CERA | 02-Feb-15 | 531254 | TRANSPEKF | 02-Feb-15 |
| 511742 | CHOKSEC | 02-Feb-15 | 500429 | UNIPHOS | 02-Feb-15 |
| 500480 | CUMMINSIND | 02-Feb-15 | 530997 | UNIQUEO | 02-Feb-15 |
| 523369 | DCMSRMIND-\$ | 02-Feb-15 | 512070 | UPL | 02-Feb-15 |
| 517514 | DHINDIA-\$ | 02-Feb-15 | 526755 | VELHO | 02-Feb-15 |
| 517437 | DUTRON-\$ | 02-Feb-15 | 514470 | WINSOMTX-\$ | 02-Feb-15 |
| 523708 | EIMCOELECO | 02-Feb-15 | 505872 | WPIL | 02-Feb-15 |
| 533477 | ENKEIWHEL | 02-Feb-15 | 500444 | WSTCSTPAPR | 02-Feb-15 |
| 531320 | EXOTICCOAL | 02-Feb-15 | 532368 | YBRANTDIGI | 02-Feb-15 |
| 500142 | FGP | 02-Feb-15 | 532039 | ZENOTECH | 02-Feb-15 |
| 523672 | FLEXFO-\$ | 02-Feb-15 | 513039 | ZHINUDYP | 02-Feb-15 |
| 538609 | GAJANANSEC | 02-Feb-15 | 506042 | ZPRBHSTE | 02-Feb-15 |
| 511676 | GICHSGFIN | 02-Feb-15 | 500410 | ACC | 03-Feb-15 |
| 506024 | HARME | 02-Feb-15 | 523120 | ADORMUL | 03-Feb-15 |
| 522289 | IFMIMPX | 02-Feb-15 | 517041 | ADORWELD | 03-Feb-15 |
| 532814 | INDIANB | 02-Feb-15 | 530723 | ASITCFIN | 03-Feb-15 |
| 531109 | ISHANCH | 02-Feb-15 | 532797 | AUTOIND | 03-Feb-15 |
| 521054 | KAKTEX | 02-Feb-15 | 533095 | BENGALASM | 03-Feb-15 |
| 532054 | KDDL-\$ | 02-Feb-15 | 533303 | BFINVEST | 03-Feb-15 |
| 532067 | KILPEST | 02-Feb-15 | 532430 | BFUTILITIE | 03-Feb-15 |
| 500252 | LAXMIMACH | 02-Feb-15 | 508136 | BNALTD | 03-Feb-15 |
| 532341 | LOGIXMICRO-\$ | 02-Feb-15 | 500825 | BRITANNIA | 03-Feb-15 |
| 533012 | LPDC | 02-Feb-15 | 500093 | CROMPGREAV | 03-Feb-15 |
| 534532 | LYPSAGEMS | 02-Feb-15 | 523367 | DCMSHRIRAM | 03-Feb-15 |
| 505324 | MANUGRAPH-\$ | 02-Feb-15 | 502137 | DECCANCE-\$ | 03-Feb-15 |
| 500890 | MODIRUBBER | 02-Feb-15 | 505700 | ELECON | 03-Feb-15 |
| 508922 | MSRINDIA | 02-Feb-15 | 522074 | ELGIEQUIP | 03-Feb-15 |
| 520059 | MUNJALAU | 02-Feb-15 | 530835 | ELTROL | 03-Feb-15 |
| 533317 | OMKARCHEM | 02-Feb-15 | 533275 | GAL | 03-Feb-15 |
| 506107 | PRECTRA | 02-Feb-15 | 501848 | GLOBOFFS | 03-Feb-15 |
| 511016 | PREMCAP | 02-Feb-15 | 533282 | GRAVITA | 03-Feb-15 |
| 500356 | RAMANEWS | 02-Feb-15 | 500676 | GSKCONS | 03-Feb-15 |
| 532805 | REDINGTON | 02-Feb-15 | 511260 | HEMINDI | 03-Feb-15 |
| 530807 | REGALIAA | 02-Feb-15 | 500182 | HEROMOTOCO | 03-Feb-15 |
| 532124 | RELIABVEN | 02-Feb-15 | 532359 | HITKITGLO | 03-Feb-15 |
| 532915 | RELIGARE | 02-Feb-15 | 531968 | IITLPROJ | 03-Feb-15 |
| 535322 | REPCOHOME | 02-Feb-15 | 533047 | IMFA | 03-Feb-15 |
| 509845 | RJSHAH | 02-Feb-15 | 504741 | INDIANHUME | 03-Feb-15 |
| 520075 | SAMKRG-\$ | 02-Feb-15 | 534816 | INFRATEL | 03-Feb-15 |
| 522034 | SHANTIGEAR | 02-Feb-15 | 533315 | INOVSYNTH | 03-Feb-15 |

| | | | | | |
|--------|---------------|-----------|--------|---------------|-----------|
| 519606 | INTEGFD | 03-Feb-15 | 590059 | APLAPOLL | 04-Feb-15 |
| 520051 | JAMNAAUTO | 03-Feb-15 | 533758 | APLAPOLLO | 04-Feb-15 |
| 532286 | JINDALSTEL | 03-Feb-15 | 533573 | APLLTD | 04-Feb-15 |
| 536493 | JK AGRI | 03-Feb-15 | 512437 | APOLLOFI | 04-Feb-15 |
| 530019 | JUBILANT | 03-Feb-15 | 516064 | ARCPR | 04-Feb-15 |
| 533302 | KICL | 03-Feb-15 | 532047 | ASIANFILMS | 04-Feb-15 |
| 532899 | KSCL | 03-Feb-15 | 524804 | AUROPHARMA | 04-Feb-15 |
| 500235 | KSL | 03-Feb-15 | 531541 | AVONORG-\$ | 04-Feb-15 |
| 533289 | KTIL | 03-Feb-15 | 501425 | BBTC | 04-Feb-15 |
| 532019 | LCCINFOTEC | 03-Feb-15 | 532454 | BHARTIARTL | 04-Feb-15 |
| 500257 | LUPIN | 03-Feb-15 | 532719 | BLKASHYAP | 04-Feb-15 |
| 531528 | MAARSOFTW | 03-Feb-15 | 500020 | BOMDYEING | 04-Feb-15 |
| 590078 | MAITHANALL | 03-Feb-15 | 532483 | CANBK | 04-Feb-15 |
| 531213 | MANAPPURAM | 03-Feb-15 | 524742 | CAPPL | 04-Feb-15 |
| 531642 | MARICO | 03-Feb-15 | 500280 | CENTENKA | 04-Feb-15 |
| 538834 | MEL | 03-Feb-15 | 532885 | CENTRALBK | 04-Feb-15 |
| 503772 | MODWOOL | 03-Feb-15 | 500040 | CENTURYTEX | 04-Feb-15 |
| 538836 | MONTECARLO | 03-Feb-15 | 521056 | CHESLINTEX | 04-Feb-15 |
| 532952 | NAHARCAP | 03-Feb-15 | 522261 | DOLPHINOFF-\$ | 04-Feb-15 |
| 523391 | NAHARPOLY | 03-Feb-15 | 526783 | DRAGARWQ-\$ | 04-Feb-15 |
| 500296 | NAHARSPING | 03-Feb-15 | 523890 | DSKULKARNI | 04-Feb-15 |
| 532641 | NDL | 03-Feb-15 | 509130 | DUNLOP-B1 | 04-Feb-15 |
| 533098 | NHPC | 03-Feb-15 | 509527 | FALCONTQ-\$ | 04-Feb-15 |
| 523385 | NILKAMAL | 03-Feb-15 | 532764 | GEECEE | 04-Feb-15 |
| 506532 | NITTAGELA-\$ | 03-Feb-15 | 521133 | GEMSPIN | 04-Feb-15 |
| 502420 | ORIENTPPR | 03-Feb-15 | 531199 | GLANCE | 04-Feb-15 |
| 532461 | PNB | 03-Feb-15 | 526717 | GOPALA | 04-Feb-15 |
| 531870 | POPULARES | 03-Feb-15 | 533248 | GPPL | 04-Feb-15 |
| 530695 | PRIMEPRO-\$ | 03-Feb-15 | 533263 | GREENPOWER | 04-Feb-15 |
| 521149 | PRIMEURB | 03-Feb-15 | 532775 | GTLINFRA | 04-Feb-15 |
| 514223 | RAMGOPOLY | 03-Feb-15 | 531410 | GUJFOIL | 04-Feb-15 |
| 590051 | SAKSOFT | 03-Feb-15 | 506480 | GULFOILCOR | 04-Feb-15 |
| 509874 | SHALPAINTS-\$ | 03-Feb-15 | 508486 | HAWKINCOOK | 04-Feb-15 |
| 513709 | SHILGRAVQ-\$ | 03-Feb-15 | 501295 | IITL | 04-Feb-15 |
| 500387 | SHREECEM | 03-Feb-15 | 500850 | INDHOTEL | 04-Feb-15 |
| 526877 | SIDDHEGA | 03-Feb-15 | 500210 | INGERRAND | 04-Feb-15 |
| 526839 | SIPL-\$ | 03-Feb-15 | 532825 | JAGJANANI | 04-Feb-15 |
| 505650 | SKYLMILAR | 03-Feb-15 | 512237 | JAICORPLTD | 04-Feb-15 |
| 507753 | SREERAYA | 03-Feb-15 | 502901 | JAMSHRI-\$ | 04-Feb-15 |
| 532348 | SUBEX | 03-Feb-15 | 506943 | JBCHEPHARM | 04-Feb-15 |
| 590072 | SUNDRMBRAK | 03-Feb-15 | 500380 | JKLAKSHMI | 04-Feb-15 |
| 532509 | SUPRAJIT | 03-Feb-15 | 533320 | JUBLINDS | 04-Feb-15 |
| 534369 | TBZ | 03-Feb-15 | 511131 | KAMANWALA | 04-Feb-15 |
| 505400 | TEXINFRA | 03-Feb-15 | 507779 | KANPRPLA | 04-Feb-15 |
| 533326 | TEXRAIL | 03-Feb-15 | 532714 | KEC | 04-Feb-15 |
| 522113 | TIMKEN | 03-Feb-15 | 537750 | KIRANVYPAR | 04-Feb-15 |
| 506687 | TRANSPEK-\$ | 03-Feb-15 | 524000 | MAGMA | 04-Feb-15 |
| 532343 | TVSMOTOR | 03-Feb-15 | 530059 | MAHASHR-\$ | 04-Feb-15 |
| 534639 | VINAYAKPOL | 03-Feb-15 | 533169 | MANINFRA | 04-Feb-15 |
| 590073 | WHEELS | 03-Feb-15 | 506261 | MODISNME-\$ | 04-Feb-15 |
| 531082 | ALANKIT | 04-Feb-15 | 534312 | MTEDUCARE | 04-Feb-15 |
| 530889 | ALKA | 04-Feb-15 | 523630 | NFL | 04-Feb-15 |

| | | | | | |
|--------|---------------|-----------|--------|-------------|-----------|
| 517554 | NHCFOODS | 04-Feb-15 | 507717 | DHANUKA | 05-Feb-15 |
| 500672 | NOVARTIND | 04-Feb-15 | 505693 | DRLCOME | 05-Feb-15 |
| 535657 | OONE | 04-Feb-15 | 524768 | EMMESSA | 05-Feb-15 |
| 506579 | ORIENTCQ-\$ | 04-Feb-15 | 507910 | FIBERWEB | 05-Feb-15 |
| 500458 | PHILCORP | 04-Feb-15 | 526881 | FINANTECH | 05-Feb-15 |
| 531768 | POLYMED | 04-Feb-15 | 536507 | FLFL | 05-Feb-15 |
| 532370 | RAMCOSYS | 04-Feb-15 | 530237 | GANDHHO | 05-Feb-15 |
| 526640 | RAYALEMA | 04-Feb-15 | 500620 | GESHIP | 05-Feb-15 |
| 536456 | RJBIOTECH | 04-Feb-15 | 500163 | GODFRYPHLP | 05-Feb-15 |
| 533168 | ROSSELLIND | 04-Feb-15 | 532424 | GODREJCP | 05-Feb-15 |
| 503863 | SHRMFGC | 04-Feb-15 | 501455 | GREAVESCOT | 05-Feb-15 |
| 532795 | SITICABLE | 04-Feb-15 | 526797 | GREENPLY | 05-Feb-15 |
| 526500 | STRGRENWO | 04-Feb-15 | 508918 | GREYCELLS | 05-Feb-15 |
| 511654 | SUGALDAM | 04-Feb-15 | 530001 | GUJALKALI | 05-Feb-15 |
| 520056 | SUNCLAYLTD | 04-Feb-15 | 538567 | GULFOILLUB | 05-Feb-15 |
| 500403 | SUNDRMFAST | 04-Feb-15 | 509631 | HEG | 05-Feb-15 |
| 521180 | SUPERSPIN | 04-Feb-15 | 532859 | HGS | 05-Feb-15 |
| 507785 | TAINWALCHM | 04-Feb-15 | 513599 | HINDCOPPER | 05-Feb-15 |
| 500400 | TATAPOWER | 04-Feb-15 | 505893 | HINDHARD | 05-Feb-15 |
| 533158 | THANGAMAYL | 04-Feb-15 | 531253 | INDGELA-\$ | 05-Feb-15 |
| 590005 | TIDEWATER | 04-Feb-15 | 532717 | INDOTECH | 05-Feb-15 |
| 532928 | TRIL | 04-Feb-15 | 532388 | IOB | 05-Feb-15 |
| 504973 | TUBEINVEST | 04-Feb-15 | 532947 | IRB | 05-Feb-15 |
| 500231 | UMANGDAIR | 04-Feb-15 | 523467 | JAIMATAG | 05-Feb-15 |
| 511764 | UPASAFN | 04-Feb-15 | 500306 | JAYKAY | 05-Feb-15 |
| 519224 | WILLAMAGOR | 04-Feb-15 | 522263 | JMCPROJECT | 05-Feb-15 |
| 519214 | WILLIMFI | 04-Feb-15 | 508929 | JOYREALTY | 05-Feb-15 |
| 532300 | WOCKPHARMA | 04-Feb-15 | 533155 | JUBLFOOD | 05-Feb-15 |
| 532404 | 7TEC | 05-Feb-15 | 533192 | KCPSUGIND | 05-Feb-15 |
| 532762 | ACE | 05-Feb-15 | 507598 | KLRF | 05-Feb-15 |
| 533330 | ACROPETAL | 05-Feb-15 | 532889 | KPRMILL | 05-Feb-15 |
| 513149 | ACROW | 05-Feb-15 | 526423 | KRITIIND-\$ | 05-Feb-15 |
| 532683 | AIAENG | 05-Feb-15 | 533210 | KRITINUT | 05-Feb-15 |
| 532480 | ALBK | 05-Feb-15 | 523594 | KUNSTOFF | 05-Feb-15 |
| 513117 | AMFORG | 05-Feb-15 | 504258 | LAKSELEC | 05-Feb-15 |
| 590006 | AMRUTANJAN-\$ | 05-Feb-15 | 515059 | MADHUDIN | 05-Feb-15 |
| 531878 | ANJANIFIN | 05-Feb-15 | 500268 | MANALIPETC | 05-Feb-15 |
| 532259 | APARINDS | 05-Feb-15 | 526235 | MERCATOR | 05-Feb-15 |
| 523694 | APCOTEXIND | 05-Feb-15 | 500126 | MERCK | 05-Feb-15 |
| 500101 | ARVIND | 05-Feb-15 | 530167 | MONGIPA | 05-Feb-15 |
| 530429 | ASHISHPO | 05-Feb-15 | 524709 | NAGAAGRI | 05-Feb-15 |
| 530885 | AURUMSOFT | 05-Feb-15 | 532722 | NITCO | 05-Feb-15 |
| 505010 | AUTOAXLES | 05-Feb-15 | 516082 | NRAGRINDQ | 05-Feb-15 |
| 500102 | BALLARPUR | 05-Feb-15 | 532944 | ONMOBILE | 05-Feb-15 |
| 531719 | BHAGCHEM | 05-Feb-15 | 517119 | PCS | 05-Feb-15 |
| 500335 | BIRLACORPN | 05-Feb-15 | 532522 | PETRONET | 05-Feb-15 |
| 506981 | BLUECHIPT | 05-Feb-15 | 535755 | PFRL | 05-Feb-15 |
| 500878 | CEATLTD | 05-Feb-15 | 506605 | POLYCHEM | 05-Feb-15 |
| 530309 | CHANDRAP-\$ | 05-Feb-15 | 531397 | POLYCON | 05-Feb-15 |
| 532807 | CINELINE | 05-Feb-15 | 500338 | PRISMCEM | 05-Feb-15 |
| 524506 | CORALAB | 05-Feb-15 | 524580 | PRIYALT-\$ | 05-Feb-15 |
| 532173 | CYBERTECH | 05-Feb-15 | 534675 | PROZONINTU | 05-Feb-15 |

| | | | | | |
|--------|-------------|-----------|--------|--------------|-----------|
| 532524 | PTC | 05-Feb-15 | 505242 | DYNAMATECH | 06-Feb-15 |
| 531562 | PUSHPIN | 05-Feb-15 | 512441 | ENBETRD | 06-Feb-15 |
| 500260 | RAMCOCEM | 05-Feb-15 | 500940 | FINOLEXIND | 06-Feb-15 |
| 532369 | RAMCOIND | 05-Feb-15 | 532155 | GAIL | 06-Feb-15 |
| 531207 | RAYLA | 05-Feb-15 | 533265 | GALLISPAT | 06-Feb-15 |
| 503169 | RUBYMILLS | 05-Feb-15 | 509557 | GARWALLROP | 06-Feb-15 |
| 504614 | SARDAEN | 05-Feb-15 | 532181 | GMDCLTD | 06-Feb-15 |
| 524552 | SHASUNPHAR | 05-Feb-15 | 532439 | GOLDINFRA | 06-Feb-15 |
| 512289 | SHIRPUR-G | 05-Feb-15 | 506879 | GUJTHEM | 06-Feb-15 |
| 531863 | SIGRUN | 05-Feb-15 | 532855 | HARYNACAP | 06-Feb-15 |
| 538891 | SIPROJECTS | 05-Feb-15 | 500292 | HEIDELBERG | 06-Feb-15 |
| 533206 | SJVN | 05-Feb-15 | 500116 | IDBI | 06-Feb-15 |
| 531509 | STEP2COR | 05-Feb-15 | 531594 | INCON | 06-Feb-15 |
| 531638 | SURAJLTD-₹ | 05-Feb-15 | 530979 | INDIAHOME | 06-Feb-15 |
| 514138 | SURYALA-₹ | 05-Feb-15 | 532305 | INDSWFTLAB | 06-Feb-15 |
| 519483 | TAIIND-₹ | 05-Feb-15 | 505737 | INTLCOMBQ | 06-Feb-15 |
| 533200 | TALWALKARS | 05-Feb-15 | 512405 | IPOWER | 06-Feb-15 |
| 500570 | TATAMOTORS | 05-Feb-15 | 511609 | ISLCONSUL | 06-Feb-15 |
| 570001 | TATAMTRDVR | 05-Feb-15 | 532605 | JBMA | 06-Feb-15 |
| 505196 | TIL | 05-Feb-15 | 532617 | JETAIRWAYS | 06-Feb-15 |
| 532375 | TIPSINDLTD | 05-Feb-15 | 511034 | JINDRILL | 06-Feb-15 |
| 500777 | TNPETRO | 05-Feb-15 | 522287 | KALPATPOWR | 06-Feb-15 |
| 512417 | TRITRADE | 05-Feb-15 | 590084 | KANCOENT | 06-Feb-15 |
| 532513 | TVSELECT | 05-Feb-15 | 521242 | KANDAGIRI-₹ | 06-Feb-15 |
| 532505 | UCOBANK | 05-Feb-15 | 531274 | KINETRU | 06-Feb-15 |
| 532867 | V2RETAIL | 05-Feb-15 | 531206 | KWALITYCL | 06-Feb-15 |
| 502986 | VTL | 05-Feb-15 | 500265 | MAHSEAMLES | 06-Feb-15 |
| 509650 | ZHINDHSG | 05-Feb-15 | 512337 | MAHSHRE | 06-Feb-15 |
| 532774 | AFL | 06-Feb-15 | 538503 | MARICOKAYEL | 06-Feb-15 |
| 530973 | ALFAICA | 06-Feb-15 | 523792 | MAZDALTD-₹ | 06-Feb-15 |
| 507828 | ANSALHSG-₹ | 06-Feb-15 | 517344 | MINDTECK | 06-Feb-15 |
| 523537 | APMIN-₹ | 06-Feb-15 | 511549 | MORARKFI | 06-Feb-15 |
| 500877 | APOLLOTYRE | 06-Feb-15 | 500450 | MPILCORPL | 06-Feb-15 |
| 520121 | ARCEEIN | 06-Feb-15 | 520043 | MUNJALSHOW | 06-Feb-15 |
| 531179 | ARMANFIN | 06-Feb-15 | 500298 | NATPEROX | 06-Feb-15 |
| 514286 | ASHIMASYN | 06-Feb-15 | 532529 | NDTV | 06-Feb-15 |
| 512261 | BAJGLOB | 06-Feb-15 | 511658 | NETTLINX | 06-Feb-15 |
| 532382 | BALAJITELE | 06-Feb-15 | 524774 | NGLFINE | 06-Feb-15 |
| 513142 | BALASORE | 06-Feb-15 | 504058 | NIPPOBATRY | 06-Feb-15 |
| 523319 | BALMLAWRIE | 06-Feb-15 | 526371 | NMDC | 06-Feb-15 |
| 500038 | BALRAMCHIN | 06-Feb-15 | 517230 | PAEL | 06-Feb-15 |
| 500058 | BIHSPONG | 06-Feb-15 | 531280 | PANKAJPO | 06-Feb-15 |
| 526225 | BLOOM-₹ | 06-Feb-15 | 534796 | PANKAJPOLY | 06-Feb-15 |
| 538789 | BUDGE BUDGE | 06-Feb-15 | 509820 | PAPERPROD | 06-Feb-15 |
| 532834 | CAMLINFIN | 06-Feb-15 | 532911 | PARLESOFT | 06-Feb-15 |
| 500078 | CAMPHOR-₹ | 06-Feb-15 | 500456 | PASUPTAC | 06-Feb-15 |
| 500085 | CHAMBLFERT | 06-Feb-15 | 534809 | PCJEWELLER | 06-Feb-15 |
| 530427 | CHOKSI | 06-Feb-15 | 514300 | PIONEEREMB-₹ | 06-Feb-15 |
| 532121 | DENABANK | 06-Feb-15 | 532460 | PONNIERODE | 06-Feb-15 |
| 538902 | DHUNTEAIND | 06-Feb-15 | 523874 | PRECISION | 06-Feb-15 |
| 500120 | DIAMINESQ-₹ | 06-Feb-15 | 526109 | PRICOL | 06-Feb-15 |
| 533146 | DLINKINDIA | 06-Feb-15 | 533295 | PSB | 06-Feb-15 |

| | | | | | |
|--------|---------------|-----------|--------|--------------|-----------|
| 509220 | PTL-\$ | 06-Feb-15 | 505032 | AUTOPRD | 07-Feb-15 |
| 531412 | RADIXIND | 06-Feb-15 | 532230 | BENGALT | 07-Feb-15 |
| 524230 | RCF | 06-Feb-15 | 512477 | BETXIND | 07-Feb-15 |
| 533552 | RUPA | 06-Feb-15 | 530803 | BHAGERIA | 07-Feb-15 |
| 500370 | SALORAINTL | 06-Feb-15 | 500060 | BIRLAERIC | 07-Feb-15 |
| 503635 | SALSAIN | 06-Feb-15 | 504643 | BWLLTD | 07-Feb-15 |
| 521240 | SAMBANDAM-\$ | 06-Feb-15 | 530307 | CHAMANSEQ-\$ | 07-Feb-15 |
| 526725 | SANDESH | 06-Feb-15 | 526817 | CHEVIOT-\$ | 07-Feb-15 |
| 514234 | SANGAMIND | 06-Feb-15 | 530829 | CILSEC | 07-Feb-15 |
| 516003 | SARDAPLY | 06-Feb-15 | 531259 | ESHAMEDIA | 07-Feb-15 |
| 511577 | SAVFI | 06-Feb-15 | 531599 | FDC | 07-Feb-15 |
| 532102 | SBECSUG | 06-Feb-15 | 531191 | FILTRON | 07-Feb-15 |
| 517360 | SBECSYS | 06-Feb-15 | 533296 | FMNL | 07-Feb-15 |
| 521182 | SEASONF | 06-Feb-15 | 524226 | GAEL | 07-Feb-15 |
| 538666 | SHARDACROP | 06-Feb-15 | 532726 | GALLANTT | 07-Feb-15 |
| 503804 | SHRIDINE-\$ | 06-Feb-15 | 517300 | GIPCL | 07-Feb-15 |
| 533014 | SICAGEN | 06-Feb-15 | 513528 | GLITTEKG | 07-Feb-15 |
| 505192 | SMLISUZU | 06-Feb-15 | 506186 | GLXYENT-\$ | 07-Feb-15 |
| 532815 | SMSPHARMA | 06-Feb-15 | 530709 | GOWRALE | 07-Feb-15 |
| 532221 | SONATSOFTW | 06-Feb-15 | 504176 | HIGHENE | 07-Feb-15 |
| 532879 | SSLEL | 06-Feb-15 | 500500 | HINDMOTORS | 07-Feb-15 |
| 530821 | SSPDL-\$ | 06-Feb-15 | 503881 | HINDSYNTEX | 07-Feb-15 |
| 513575 | STERS | 06-Feb-15 | 532414 | IKFTECH | 07-Feb-15 |
| 508963 | STRLGUA | 06-Feb-15 | 533676 | INDOTHAI | 07-Feb-15 |
| 514211 | SUMEETINDS-\$ | 06-Feb-15 | 524494 | IPCALAB | 07-Feb-15 |
| 500404 | SUNFLAG | 06-Feb-15 | 531550 | JHACC | 07-Feb-15 |
| 531433 | SUNGOLD | 06-Feb-15 | 532644 | JKCEMENT | 07-Feb-15 |
| 532733 | SUNTV | 06-Feb-15 | 526668 | KAMATHOTEL | 07-Feb-15 |
| 532782 | SUTLEJTEX | 06-Feb-15 | 532686 | KERNEX | 07-Feb-15 |
| 532890 | TAKE | 06-Feb-15 | 521127 | KHTRFIB | 07-Feb-15 |
| 512271 | TASHIND | 06-Feb-15 | 526947 | LAOPALA | 07-Feb-15 |
| 500770 | TATACHEM | 06-Feb-15 | 524404 | MARKSANS | 07-Feb-15 |
| 500470 | TATASTEEL | 06-Feb-15 | 538890 | MKEXIM | 07-Feb-15 |
| 509945 | THACKER | 06-Feb-15 | 519494 | NKIND | 07-Feb-15 |
| 531373 | THEBYKE | 06-Feb-15 | 500333 | PIXTRANS | 07-Feb-15 |
| 530199 | THEMISMED | 06-Feb-15 | 526490 | PRATIK | 07-Feb-15 |
| 532804 | TIIL | 06-Feb-15 | 526247 | PREMEXPLQ | 07-Feb-15 |
| 533540 | TREEHOUSE | 06-Feb-15 | 500360 | RAPICUT | 07-Feb-15 |
| 531703 | TRIBHSG | 06-Feb-15 | 515085 | RESTILE | 07-Feb-15 |
| 538597 | TTIENT | 06-Feb-15 | 532735 | RSYSTEMINT* | 07-Feb-15 |
| 509243 | TVSSRICHA | 06-Feb-15 | 513295 | RUCHISTR | 07-Feb-15 |
| 532515 | TVTODAY | 06-Feb-15 | 533470 | RUSHIL | 07-Feb-15 |
| 532384 | TYCHE | 06-Feb-15 | 538795 | SAPPL | 07-Feb-15 |
| 504212 | UNIVCABLES | 06-Feb-15 | 534139 | SCHNEIDER | 07-Feb-15 |
| 513216 | UTTAMSTL | 06-Feb-15 | 530075 | SELAN | 07-Feb-15 |
| 514175 | VARDMNPOLY | 06-Feb-15 | 502450 | SESHAPAPER | 07-Feb-15 |
| 531574 | VASINFRA | 06-Feb-15 | 532455 | SHALIWIR | 07-Feb-15 |
| 538548 | VITANAGRO | 06-Feb-15 | 523449 | SHARP | 07-Feb-15 |
| 505533 | WESTLIFE | 06-Feb-15 | 503205 | SHREERAM | 07-Feb-15 |
| 530063 | YASHRAJC | 06-Feb-15 | 530419 | SUMEDHA | 07-Feb-15 |
| 526662 | ARENTERP | 07-Feb-15 | 518075 | SURAJ | 07-Feb-15 |
| 500028 | ATVPR | 07-Feb-15 | 533281 | TECHNO | 07-Feb-15 |

| | | | | | |
|--------|---------------|-----------|--------|--------------|-----------|
| 523856 | TORRCABS | 07-Feb-15 | 524808 | PHYTO | 09-Feb-15 |
| 536565 | TRIMURTHI | 07-Feb-15 | 500540 | PREMIER | 09-Feb-15 |
| 526113 | UNRYLMA | 07-Feb-15 | 505800 | RANEHOLDIN | 09-Feb-15 |
| 533156 | VASCONEQ | 07-Feb-15 | 523650 | REDEXPR | 09-Feb-15 |
| 517015 | VINDHYATEL | 07-Feb-15 | 511254 | SAGARSYST | 09-Feb-15 |
| 522122 | VOITHPAPR-\$ | 07-Feb-15 | 502175 | SAURASHCEM | 09-Feb-15 |
| 533269 | WABAG | 07-Feb-15 | 531944 | SERVOTEC | 09-Feb-15 |
| 516030 | YASHPPR-\$ | 07-Feb-15 | 532172 | SPHEREGSL | 09-Feb-15 |
| 522108 | YUKEN-\$ | 07-Feb-15 | 513517 | STEELCAS | 09-Feb-15 |
| 514266 | ZENIFIB-\$ | 07-Feb-15 | 530759 | STERTOOLS-\$ | 09-Feb-15 |
| 532941 | CORDSCABLE | 08-Feb-15 | 506222 | STYABS | 09-Feb-15 |
| 517417 | PATELSAI | 08-Feb-15 | 506863 | SWADEIN | 09-Feb-15 |
| 524208 | AARTIIND | 09-Feb-15 | 506808 | TUTIALKA | 09-Feb-15 |
| 533221 | AHLWEST | 09-Feb-15 | 500464 | UCALFUEL | 09-Feb-15 |
| 538653 | AMMLTD | 09-Feb-15 | 530131 | UDAICEMENT | 09-Feb-15 |
| 533163 | ARSSINFRA | 09-Feb-15 | 522015 | VCCLTD | 09-Feb-15 |
| 532888 | ASIANILES | 09-Feb-15 | 524394 | VIMTALABS-\$ | 09-Feb-15 |
| 532759 | ATLANTA | 09-Feb-15 | 511361 | VISHWAFIN | 09-Feb-15 |
| 530233 | AUROLAB | 09-Feb-15 | 522267 | VJLAXMIE-\$ | 09-Feb-15 |
| 532395 | AXISCADES | 09-Feb-15 | 532757 | VOLTAMP | 09-Feb-15 |
| 531278 | AXISCAP | 09-Feb-15 | 505585 | ZKOVALIN | 09-Feb-15 |
| 531489 | CGVAK | 09-Feb-15 | 531335 | ZYDUSWELL | 09-Feb-15 |
| 532992 | CHLLTD | 09-Feb-15 | 532628 | 3IINFOTECH | 10-Feb-15 |
| 538521 | CROWNTOURS | 09-Feb-15 | 531611 | AADHAARVEN | 10-Feb-15 |
| 526927 | DION | 09-Feb-15 | 500002 | ABB | 10-Feb-15 |
| 500128 | ELECTCAST | 09-Feb-15 | 500303 | ABIRLANUVO | 10-Feb-15 |
| 533090 | EXCELINFO | 09-Feb-15 | 523269 | ADVANIHOTR | 10-Feb-15 |
| 538568 | FRUTION | 09-Feb-15 | 526331 | ADVMULT | 10-Feb-15 |
| 504697 | GALADA | 09-Feb-15 | 506947 | ADVPETR-B | 10-Feb-15 |
| 531744 | GINISILK-\$ | 09-Feb-15 | 531673 | ANKIN | 10-Feb-15 |
| 517174 | HONAUT | 09-Feb-15 | 531406 | ANSINDUS | 10-Feb-15 |
| 526761 | HOWARHO | 09-Feb-15 | 538556 | ARMAN | 10-Feb-15 |
| 505539 | IMCFINA | 09-Feb-15 | 524594 | ASHOKALC | 10-Feb-15 |
| 532240 | INDNIPPON | 09-Feb-15 | 530899 | ASIAPAK | 10-Feb-15 |
| 522165 | INDSILHYD-\$ | 09-Feb-15 | 500048 | BEML | 10-Feb-15 |
| 523586 | INDTONER-\$ | 09-Feb-15 | 500074 | BPL | 10-Feb-15 |
| 512559 | KOHINOOR | 09-Feb-15 | 514045 | BSL | 10-Feb-15 |
| 531241 | LINCPENQ-\$ | 09-Feb-15 | 532321 | CADILAHC | 10-Feb-15 |
| 500510 | LT | 09-Feb-15 | 534804 | CARERATING | 10-Feb-15 |
| 505302 | LXMIATO | 09-Feb-15 | 504671 | CHASBRT | 10-Feb-15 |
| 523248 | MACPLASQ-\$ | 09-Feb-15 | 532392 | CREATIVEYE | 10-Feb-15 |
| 515093 | MADHAV | 09-Feb-15 | 514030 | DEEPAKSP-\$ | 10-Feb-15 |
| 532865 | MEGH | 09-Feb-15 | 500119 | DHAMPURSUG | 10-Feb-15 |
| 530341 | MUKESHB | 09-Feb-15 | 506405 | DHARAMSI | 10-Feb-15 |
| 508989 | NAVNETEDUL | 09-Feb-15 | 523736 | DPL | 10-Feb-15 |
| 513023 | NBVENTURES | 09-Feb-15 | 526483 | EDUEXEL | 10-Feb-15 |
| 532864 | NELCAST | 09-Feb-15 | 530581 | EKAMLEA | 10-Feb-15 |
| 500307 | NIRLON | 09-Feb-15 | 532684 | EKC | 10-Feb-15 |
| 532698 | NITINSPIN | 09-Feb-15 | 531470 | EMPORIS | 10-Feb-15 |
| 532340 | OMNIAX | 09-Feb-15 | 532700 | ENIL | 10-Feb-15 |
| 504879 | ORIENTABRA-\$ | 09-Feb-15 | 533704 | ESSARSHPNG | 10-Feb-15 |
| 504093 | PANAENERG-\$ | 09-Feb-15 | 509567 | GOACARBON-\$ | 10-Feb-15 |
| 514087 | PBMPOLY-\$ | 09-Feb-15 | 531449 | GRMOVER | 10-Feb-15 |
| 526747 | PGFOILQ | 09-Feb-15 | 513059 | GSAUTO | 10-Feb-15 |

| | | | | | |
|--------|--------------|-----------|--------|---------------|-----------|
| 518029 | GSCLCEMENT | 10-Feb-15 | 531658 | TRIJAL | 10-Feb-15 |
| 500170 | GTNINDS | 10-Feb-15 | 530363 | UGARSUGAR-\$ | 10-Feb-15 |
| 532467 | HAZOOR-\$ | 10-Feb-15 | 531091 | UNITDCR | 10-Feb-15 |
| 532334 | HBESD | 10-Feb-15 | 531693 | YANTRA | 10-Feb-15 |
| 532333 | HBPOR | 10-Feb-15 | 500780 | ZUARIGLOB | 10-Feb-15 |
| 521016 | ICIL | 10-Feb-15 | 500057 | ABCIL | 11-Feb-15 |
| 534734 | ICVLCEM | 10-Feb-15 | 533227 | AHLEAST | 11-Feb-15 |
| 500199 | IGPL | 10-Feb-15 | 532633 | ALLSEC | 11-Feb-15 |
| 536868 | INTELSOFT | 10-Feb-15 | 521070 | ALOKTEXT | 11-Feb-15 |
| 532162 | JKPAPER | 10-Feb-15 | 532141 | ANDHRACEMT | 11-Feb-15 |
| 530977 | KATWAUD | 10-Feb-15 | 506166 | APIS | 11-Feb-15 |
| 512597 | KEYCORPSER | 10-Feb-15 | 526851 | AREXMIS | 11-Feb-15 |
| 511728 | KZLFIN | 10-Feb-15 | 519174 | ASHAI | 11-Feb-15 |
| 523384 | MAHAPEXLTD | 10-Feb-15 | 506820 | ASTRAZEN | 11-Feb-15 |
| 533204 | MANDHANA | 10-Feb-15 | 530197 | BAGADIA | 11-Feb-15 |
| 512165 | MATRUTR | 10-Feb-15 | 500043 | BATAINDIA | 11-Feb-15 |
| 517334 | MOTHERSUMI | 10-Feb-15 | 514215 | BINNY | 11-Feb-15 |
| 532234 | NATIONALUM | 10-Feb-15 | 500547 | BPCL | 11-Feb-15 |
| 530697 | NEELKATEC | 10-Feb-15 | 520131 | COARO | 11-Feb-15 |
| 505355 | NESCO | 10-Feb-15 | 531344 | CONCOR | 11-Feb-15 |
| 526721 | NICCOPAR-\$ | 10-Feb-15 | 523415 | COVENTRY | 11-Feb-15 |
| 534190 | OLPCL | 10-Feb-15 | 532640 | CYBERMEDIA | 11-Feb-15 |
| 531626 | OROSMITHS-\$ | 10-Feb-15 | 500645 | DEEPAKFERT | 11-Feb-15 |
| 509782 | OSEASPR | 10-Feb-15 | 537536 | DENISCHEM | 11-Feb-15 |
| 538860 | PANAFIC | 10-Feb-15 | 531237 | DHRUVCA | 11-Feb-15 |
| 524628 | PARKERAC-\$ | 10-Feb-15 | 500495 | ESCORTS | 11-Feb-15 |
| 531172 | PRANAVSP | 10-Feb-15 | 533149 | ESSARSEC | 11-Feb-15 |
| 523539 | PRECWIRE | 10-Feb-15 | 505790 | FAGBEARING | 11-Feb-15 |
| 526801 | PSL | 10-Feb-15 | 500164 | GODREJIND | 11-Feb-15 |
| 512099 | PUNITCO | 10-Feb-15 | 531439 | GOLDTECH | 11-Feb-15 |
| 530561 | RADGLOBAL | 10-Feb-15 | 508956 | HBLEAS | 11-Feb-15 |
| 532497 | RADICO | 10-Feb-15 | 532216 | HBSTOCK | 11-Feb-15 |
| 531522 | RASOYPR | 10-Feb-15 | 519126 | HNDFDS | 11-Feb-15 |
| 537840 | RAUNAQINTL | 10-Feb-15 | 501298 | INDPRUD | 11-Feb-15 |
| 503162 | RELCEMQ-\$ | 10-Feb-15 | 532851 | INSECTICID | 11-Feb-15 |
| 530053 | RREALTY | 10-Feb-15 | 507580 | IVP | 11-Feb-15 |
| 500350 | RSWM | 10-Feb-15 | 514034 | JBFIND | 11-Feb-15 |
| 532713 | SAKUMA | 10-Feb-15 | 500227 | JINDALPOLY | 11-Feb-15 |
| 530073 | SANGHVIMOV | 10-Feb-15 | 505750 | JOSTS | 11-Feb-15 |
| 531898 | SANGUI | 10-Feb-15 | 536773 | JPOLYINVST | 11-Feb-15 |
| 530035 | SANTOSHF | 10-Feb-15 | 500234 | KAKATCEM | 11-Feb-15 |
| 535602 | SHARDA | 10-Feb-15 | 506525 | KANORICHEM | 11-Feb-15 |
| 513687 | SPECTRA | 10-Feb-15 | 531882 | KWALITY | 11-Feb-15 |
| 503806 | SRF | 10-Feb-15 | 502958 | LAKSHMIMIL-\$ | 11-Feb-15 |
| 521119 | SRIMALI | 10-Feb-15 | 532756 | MAHINDCIE | 11-Feb-15 |
| 523222 | SRMENERGY | 10-Feb-15 | 513377 | MMTC | 11-Feb-15 |
| 511185 | SURYAKR | 10-Feb-15 | 506734 | MYSORPETRO-\$ | 11-Feb-15 |
| 531190 | TAVERNIER | 10-Feb-15 | 500294 | NCC | 11-Feb-15 |
| 531644 | TOKYOFIN | 10-Feb-15 | 530557 | NCLRESE | 11-Feb-15 |
| 500418 | TOKYOPLAST | 10-Feb-15 | 533202 | NITESHEST | 11-Feb-15 |
| 505854 | TRF-\$ | 10-Feb-15 | 519491 | OCEAGRO | 11-Feb-15 |

| | | | | | |
|--------|---------------|-----------|--------|-------------|-----------|
| 534076 | ORIENTREF | 11-Feb-15 | 530779 | DYNAMICP | 12-Feb-15 |
| 532810 | PFC | 11-Feb-15 | 500144 | FINCABLES | 12-Feb-15 |
| 509084 | PHOTON | 11-Feb-15 | 536751 | FIVEX | 12-Feb-15 |
| 506618 | PUNJABCHEM-\$ | 11-Feb-15 | 531463 | GBLINFRA | 12-Feb-15 |
| 524502 | RAAJMEDI | 11-Feb-15 | 505250 | GGDANDE | 12-Feb-15 |
| 532503 | RAJPALAYAM-\$ | 11-Feb-15 | 507815 | GILLETTE | 12-Feb-15 |
| 532690 | RAMSARUP | 11-Feb-15 | 500660 | GLAXO | 12-Feb-15 |
| 532687 | REPRO | 11-Feb-15 | 505255 | GMM | 12-Feb-15 |
| 517496 | RICOHQ | 11-Feb-15 | 532754 | GMRINFRA | 12-Feb-15 |
| 533401 | SERVALL | 11-Feb-15 | 526779 | HINAFIL | 12-Feb-15 |
| 513097 | SHBCLQ | 11-Feb-15 | 500440 | HINDALCO | 12-Feb-15 |
| 520151 | SHREYAS | 11-Feb-15 | 590018 | HISARMET-\$ | 12-Feb-15 |
| 520057 | SONASTEER | 11-Feb-15 | 521068 | HISARSP | 12-Feb-15 |
| 512153 | SPECMKT | 11-Feb-15 | 531661 | HITTCO | 12-Feb-15 |
| 515081 | SRIVAJRA | 11-Feb-15 | 522064 | HONDAPOWER | 12-Feb-15 |
| 521178 | SRMCL-\$ | 11-Feb-15 | 531724 | HRBFLO | 12-Feb-15 |
| 512531 | STCINDIA | 11-Feb-15 | 526931 | HRYNSHP-\$ | 12-Feb-15 |
| 526071 | STELLANT | 11-Feb-15 | 500212 | IFSL | 12-Feb-15 |
| 537253 | SUNLOC | 11-Feb-15 | 532514 | IGL | 12-Feb-15 |
| 532276 | SYNDIBANK | 11-Feb-15 | 532001 | INDCTST | 12-Feb-15 |
| 519091 | TASTYBIT | 11-Feb-15 | 524614 | INDXTRA | 12-Feb-15 |
| 533553 | TDPOWERSYS | 11-Feb-15 | 533154 | INFINITE | 12-Feb-15 |
| 530151 | VIJAYTX | 11-Feb-15 | 500211 | INSILCO | 12-Feb-15 |
| 509038 | VOLLF | 11-Feb-15 | 538422 | JACKSON | 12-Feb-15 |
| 500575 | VOLTAS | 11-Feb-15 | 519441 | JAIDIND | 12-Feb-15 |
| 531266 | VSTILLERS | 11-Feb-15 | 526558 | JAMEHOT | 12-Feb-15 |
| 532177 | ZIGMASOF-\$ | 11-Feb-15 | 532940 | JKIL | 12-Feb-15 |
| 521163 | ZODIACLOTH | 11-Feb-15 | 511092 | JMDTELEFILM | 12-Feb-15 |
| 517356 | ACIIN | 12-Feb-15 | 532508 | JSL | 12-Feb-15 |
| 538563 | ADARSH | 12-Feb-15 | 516078 | JUMBO | 12-Feb-15 |
| 530117 | ADIFINCHM | 12-Feb-15 | 531778 | KACHCHH | 12-Feb-15 |
| 532811 | AHLUCONT | 12-Feb-15 | 530201 | KALLAM-\$ | 12-Feb-15 |
| 532351 | AKSHOPTFBR | 12-Feb-15 | 502937 | KESORAMIND | 12-Feb-15 |
| 507525 | AMRITCORP-\$ | 12-Feb-15 | 535730 | KHOBSURAT | 12-Feb-15 |
| 531223 | ANJANI-\$ | 12-Feb-15 | 531578 | KMFBLDR | 12-Feb-15 |
| 530799 | ANNAINFRA | 12-Feb-15 | 532942 | KNRCON | 12-Feb-15 |
| 519532 | ASIAANTNE-\$ | 12-Feb-15 | 517471 | KOATOOLIN | 12-Feb-15 |
| 505506 | AXONFIN | 12-Feb-15 | 519421 | KSE-\$ | 12-Feb-15 |
| 500031 | BAJAJELEC | 12-Feb-15 | 500264 | MAFATIND-\$ | 12-Feb-15 |
| 500103 | BHEL | 12-Feb-15 | 531689 | MAHAREM | 12-Feb-15 |
| 514183 | BLACKROSE | 12-Feb-15 | 533078 | MANJEERA | 12-Feb-15 |
| 532290 | BLBLIMITED | 12-Feb-15 | 500271 | MAX | 12-Feb-15 |
| 508939 | BLCISER | 12-Feb-15 | 522249 | MAYURUNIQ | 12-Feb-15 |
| 523019 | BNRSEC | 12-Feb-15 | 523144 | MEDICAPQ-\$ | 12-Feb-15 |
| 530809 | BNRUDY | 12-Feb-15 | 532408 | MEGASOFT | 12-Feb-15 |
| 532678 | BRFL | 12-Feb-15 | 531727 | MENNPIS | 12-Feb-15 |
| 530609 | CARNATIN | 12-Feb-15 | 500290 | MRF | 12-Feb-15 |
| 500084 | CESC | 12-Feb-15 | 500108 | MTNL | 12-Feb-15 |
| 530839 | CLIOINFO | 12-Feb-15 | 511200 | MUNCAPM | 12-Feb-15 |
| 511710 | CUBIFIN | 12-Feb-15 | 534615 | NECCLTD | 12-Feb-15 |
| 523782 | DERPC | 12-Feb-15 | 530897 | NGIND-\$ | 12-Feb-15 |
| 531367 | DOLLEX | 12-Feb-15 | 530367 | NRBBEARING | 12-Feb-15 |

| | | | | | |
|--------|--------------|-----------|--------|--------------|-----------|
| 538607 | OJASASSET | 12-Feb-15 | 513513 | ADITYA | 13-Feb-15 |
| 511632 | OLYMFTI | 12-Feb-15 | 534612 | AMTL | 13-Feb-15 |
| 531092 | OMMETALS | 12-Feb-15 | 512273 | ARONICOMM-\$ | 13-Feb-15 |
| 500312 | ONGC | 12-Feb-15 | 521174 | ARORAFIB | 13-Feb-15 |
| 500317 | OSWALAGRO | 12-Feb-15 | 513401 | ASHIS | 13-Feb-15 |
| 532827 | PAGEIND | 12-Feb-15 | 502125 | BAGALKOT | 13-Feb-15 |
| 506122 | PANKPIY | 12-Feb-15 | 503722 | BANSWRAS-\$ | 13-Feb-15 |
| 535658 | PAWANSUT | 12-Feb-15 | 517203 | BEELE | 13-Feb-15 |
| 500459 | PGHH | 12-Feb-15 | 532930 | BGREENERGY | 13-Feb-15 |
| 526043 | POLYCHMP | 12-Feb-15 | 526666 | BIL | 13-Feb-15 |
| 531437 | PRWOLEN | 12-Feb-15 | 531671 | BISIL | 13-Feb-15 |
| 500346 | PUNJCOMMU-\$ | 12-Feb-15 | 519500 | BKV | 13-Feb-15 |
| 538452 | QUASAR | 12-Feb-15 | 532324 | CINEVISTA | 13-Feb-15 |
| 506975 | RAJSPTR | 12-Feb-15 | 531775 | CISTRO | 13-Feb-15 |
| 531228 | RANDER | 12-Feb-15 | 512213 | CLASELE | 13-Feb-15 |
| 513558 | REALSTR-\$ | 12-Feb-15 | 530859 | COSBOARD | 13-Feb-15 |
| 512047 | ROYALIND | 12-Feb-15 | 505678 | CPECLTD | 13-Feb-15 |
| 532669 | SBTL | 12-Feb-15 | 532783 | DAAWAT | 13-Feb-15 |
| 523598 | SCI | 12-Feb-15 | 530171 | DAULAT | 13-Feb-15 |
| 503837 | SHRAJSYNQ-\$ | 12-Feb-15 | 535486 | DELTALTD | 13-Feb-15 |
| 523236 | SHRENUJ | 12-Feb-15 | 538432 | DIVINUS | 13-Feb-15 |
| 532945 | SHRIRAMEPC | 12-Feb-15 | 533176 | DQE | 13-Feb-15 |
| 512453 | SHRJAGP | 12-Feb-15 | 590063 | DUNCANSLTD | 13-Feb-15 |
| 533018 | SIMPLXMIL | 12-Feb-15 | 505200 | EICHERMOT | 13-Feb-15 |
| 533019 | SIMPLXPAP | 12-Feb-15 | 532787 | ESSDEE | 13-Feb-15 |
| 526901 | SONALAD | 12-Feb-15 | 526614 | EXPOGAS | 13-Feb-15 |
| 531370 | SPARCSYS | 12-Feb-15 | 531252 | FARRYIND | 13-Feb-15 |
| 526161 | SPENTA | 12-Feb-15 | 508954 | FINKURVE | 13-Feb-15 |
| 526827 | SPICEISL-\$ | 12-Feb-15 | 522017 | FLUIDOM | 13-Feb-15 |
| 500399 | STEELCO | 12-Feb-15 | 534757 | FOCUSIRL | 13-Feb-15 |
| 533332 | SUDAR | 12-Feb-15 | 503831 | FOMEHOT | 13-Feb-15 |
| 523425 | SUNRAJDI | 12-Feb-15 | 531196 | GAGANPO | 13-Feb-15 |
| 513277 | SUPERFORGE | 12-Feb-15 | 505711 | GAJRA-\$ | 13-Feb-15 |
| 532051 | SWELECTES | 12-Feb-15 | 511489 | GANDLEA | 13-Feb-15 |
| 531499 | SYBLY-\$ | 12-Feb-15 | 521176 | GANGOTRI | 13-Feb-15 |
| 505160 | TALBROAUTO | 12-Feb-15 | 532716 | GILLANDERS | 13-Feb-15 |
| 531426 | TNPL | 12-Feb-15 | 590025 | GINNIFILA | 13-Feb-15 |
| 531035 | TOBUENT | 12-Feb-15 | 531479 | GLOBAL | 13-Feb-15 |
| 530937 | UMSTECHNO | 12-Feb-15 | 530263 | GLOBALCA | 13-Feb-15 |
| 523519 | UNIOFFICE | 12-Feb-15 | 500151 | GOLDENTOBC | 13-Feb-15 |
| 532035 | UNISTRMU | 12-Feb-15 | 531737 | GREENCREST | 13-Feb-15 |
| 521188 | UNITEDTE | 12-Feb-15 | 511543 | GSBFIN | 13-Feb-15 |
| 526941 | VAICC | 12-Feb-15 | 526965 | GUJCRAFT | 13-Feb-15 |
| 526775 | VALIANT-\$ | 12-Feb-15 | 524314 | GUJTERC | 13-Feb-15 |
| 515099 | VERTICLIND | 12-Feb-15 | 532708 | GVKPIL | 13-Feb-15 |
| 523660 | WATERBASE | 12-Feb-15 | 509597 | HARDCAS | 13-Feb-15 |
| 538382 | WESTLEIRES | 12-Feb-15 | 531918 | HINDAPL | 13-Feb-15 |
| 512431 | WHITHAL | 12-Feb-15 | 500104 | HINDPETRO | 13-Feb-15 |
| 514348 | WINSOME | 12-Feb-15 | 530853 | HIPOLIN | 13-Feb-15 |
| 505520 | ZHEMHOLD | 12-Feb-15 | 524019 | HYDROS&S-\$ | 13-Feb-15 |
| 513012 | ZJEETMAC | 12-Feb-15 | 517044 | IDM | 13-Feb-15 |
| 511122 | 1STCUS | 13-Feb-15 | 500202 | INDLEASE | 13-Feb-15 |

| | | | | | |
|--------|--------------|-----------|--------|--------------|-----------|
| 500207 | INDORAMA | 13-Feb-15 | 520086 | SICAL | 13-Feb-15 |
| 530259 | INTSTOIL | 13-Feb-15 | 514240 | SNSTEXTIL | 13-Feb-15 |
| 531861 | JOINDRE | 13-Feb-15 | 513699 | SOLIDSTON | 13-Feb-15 |
| 504840 | KAIRA | 13-Feb-15 | 516086 | SRPML | 13-Feb-15 |
| 504269 | KHAITANELE | 13-Feb-15 | 530931 | STANPACK | 13-Feb-15 |
| 523652 | KPLASTIK | 13-Feb-15 | 517168 | SUBROS | 13-Feb-15 |
| 530421 | KUWERIN | 13-Feb-15 | 506655 | SUDARSCHEM | 13-Feb-15 |
| 531288 | LEADFIN | 13-Feb-15 | 530735 | SUPERBAK | 13-Feb-15 |
| 506113 | LIFELINE | 13-Feb-15 | 531432 | SYTIXSE | 13-Feb-15 |
| 532537 | LUMAXAUTO | 13-Feb-15 | 533170 | TAMBOLI | 13-Feb-15 |
| 500520 | M&M | 13-Feb-15 | 517562 | TRIGYN | 13-Feb-15 |
| 531394 | MARVINY | 13-Feb-15 | 531088 | TULIPSTA-\$ | 13-Feb-15 |
| 514456 | METROOV | 13-Feb-15 | 531411 | TUNITEX | 13-Feb-15 |
| 532164 | MINOLTAF | 13-Feb-15 | 531831 | UNISH | 13-Feb-15 |
| 500279 | MIRCELECTR | 13-Feb-15 | 511690 | WARNER | 13-Feb-15 |
| 530169 | MOHITPPR | 13-Feb-15 | 512022 | WINROC | 13-Feb-15 |
| 501343 | MOTOGENFIN | 13-Feb-15 | 512020 | ZSARACOM | 13-Feb-15 |
| 526299 | MPHASIS | 13-Feb-15 | 509910 | ZSOUTGAS | 13-Feb-15 |
| 526169 | MULTIBASE | 13-Feb-15 | 532403 | 4THGEN | 14-Feb-15 |
| 534184 | NAGAROIL | 13-Feb-15 | 590116 | 7SEAS | 14-Feb-15 |
| 523242 | NBFOOT | 13-Feb-15 | 531047 | ADVPOWER | 14-Feb-15 |
| 514332 | NEOINFRA | 13-Feb-15 | 516020 | AGIOPAPER-\$ | 14-Feb-15 |
| 500790 | NESTLEIND | 13-Feb-15 | 532806 | AICHAMP | 14-Feb-15 |
| 511714 | NIMBSPROJ | 13-Feb-15 | 508869 | APOLLOHOSP | 14-Feb-15 |
| 530127 | NPRFIN | 13-Feb-15 | 524412 | AREYDRG | 14-Feb-15 |
| 511674 | OLYCAP | 13-Feb-15 | 509053 | BANASFN | 14-Feb-15 |
| 514324 | OMNITEX | 13-Feb-15 | 526709 | BITS | 14-Feb-15 |
| 523307 | PANASONIC-\$ | 13-Feb-15 | 514440 | BPTEX | 14-Feb-15 |
| 511525 | PANINDIAC | 13-Feb-15 | 531900 | CCLINTER | 14-Feb-15 |
| 531120 | PATELENG | 13-Feb-15 | 531119 | CEENIK | 14-Feb-15 |
| 538730 | PDSMFL | 13-Feb-15 | 513353 | COCHINM-\$ | 14-Feb-15 |
| 532808 | PGIL | 13-Feb-15 | 533144 | COX&KINGS | 14-Feb-15 |
| 503100 | PHOENIXLTD | 13-Feb-15 | 531380 | CSURGSU | 14-Feb-15 |
| 531257 | PRATIKSH | 13-Feb-15 | 512485 | DHANCOT | 14-Feb-15 |
| 535514 | PRIMECAPM | 13-Feb-15 | 526504 | DOLPHMED | 14-Feb-15 |
| 531735 | PRISMFN | 13-Feb-15 | 530391 | DOTCOM | 14-Feb-15 |
| 526494 | PROMACT | 13-Feb-15 | 521014 | EUROTEXIND | 14-Feb-15 |
| 517556 | PVP | 13-Feb-15 | 532657 | FACORSTE | 14-Feb-15 |
| 500354 | RAJSREESUG | 13-Feb-15 | 526073 | GALXBRG | 14-Feb-15 |
| 524037 | RAMAPHO | 13-Feb-15 | 538743 | GREENFIELD | 14-Feb-15 |
| 515127 | RAMMA | 13-Feb-15 | 532133 | IFGLREFRAC | 14-Feb-15 |
| 531583 | RAP | 13-Feb-15 | 531129 | INANI | 14-Feb-15 |
| 532955 | RECLTD | 13-Feb-15 | 512025 | INERTIAST | 14-Feb-15 |
| 531033 | REGAL | 13-Feb-15 | 531793 | INFRAQUEST | 14-Feb-15 |
| 531447 | ROCKONFIN | 13-Feb-15 | 537985 | INFRONICS | 14-Feb-15 |
| 507663 | SAGRSOY-B | 13-Feb-15 | 507155 | JAGAJITIND | 14-Feb-15 |
| 531931 | SAICAPI | 13-Feb-15 | 526409 | KALPENA | 14-Feb-15 |
| 530905 | SAINDUS | 13-Feb-15 | 507474 | KFBL | 14-Feb-15 |
| 521222 | SANBLUE | 13-Feb-15 | 507794 | KHAICHEM | 14-Feb-15 |
| 533411 | SANGHVIFOR | 13-Feb-15 | 532275 | LANDMARC | 14-Feb-15 |
| 538520 | SBL | 13-Feb-15 | 500267 | MAJESAUT-\$ | 14-Feb-15 |
| 507952 | SHIKHARLETR | 13-Feb-15 | 517467 | MARSONS | 14-Feb-15 |

| | | | | | |
|--------|-------------|-----------|--------|--------------|-----------|
| 526935 | MBPARIKH | 14-Feb-15 | 509870 | SHAHCON | 14-Feb-15 |
| 507621 | MLKFOOD | 14-Feb-15 | 530797 | SHGANEL | 14-Feb-15 |
| 507938 | MNPLFIN | 14-Feb-15 | 512105 | SHRENTH | 14-Feb-15 |
| 538395 | NAM | 14-Feb-15 | 524715 | SUNPHARMA | 14-Feb-15 |
| 509040 | NETLINK | 14-Feb-15 | 523283 | SUPERHOUSE | 14-Feb-15 |
| 521062 | OCTAVE | 14-Feb-15 | 513597 | SURANAIND | 14-Feb-15 |
| 531157 | ORGOAT | 14-Feb-15 | 524488 | SVCSUPE | 14-Feb-15 |
| 590074 | ORTIN-\$ | 14-Feb-15 | 519285 | TARAI | 14-Feb-15 |
| 533211 | PARABDRUGS | 14-Feb-15 | 512221 | TARCF | 14-Feb-15 |
| 521246 | PARASPETRO | 14-Feb-15 | 503663 | TILAKFIN | 14-Feb-15 |
| 500680 | PFIZER | 14-Feb-15 | 531547 | TIRIN | 14-Feb-15 |
| 519359 | POONADAL | 14-Feb-15 | 530321 | UNIMININ | 14-Feb-15 |
| 526813 | RAGHUNAT | 14-Feb-15 | 513397 | VALLABHSQ-\$ | 14-Feb-15 |
| 531552 | RAGHUTOB | 14-Feb-15 | 513534 | VARDHINDQ-\$ | 14-Feb-15 |
| 530061 | ROCKTHR | 14-Feb-15 | 521028 | VEENATX | 14-Feb-15 |
| 530125 | SAMRATPH-\$ | 14-Feb-15 | 590035 | TIRFOAM-\$ | 15-Feb-15 |
| 504918 | SANDUMA | 14-Feb-15 | 500425 | AMBUJACEM | 18-Feb-15 |
| 524703 | SANDUPHQ | 14-Feb-15 | 500472 | SKFINDIA | 18-Feb-15 |
| 531794 | SESHACHAL | 14-Feb-15 | 500674 | SANOFI | 20-Feb-15 |
| 526532 | SFPIL | 14-Feb-15 | 500166 | GOODRICKE | 28-Feb-15 |

| Economic Calendar | | | | | |
|-------------------|---|---|---|---|---|
| | Monday 2-Feb-15 | Tuesday 3-Feb-15 | Wednesday 4-Feb-15 | Thursday 5-Feb-15 | Friday 6-Feb-15 |
| US | Core PCE Price Index m/m , Personal Spending m/m , Personal Income m/m , Final Manufacturing PMI , ISM Manufacturing PMI , Construction Spending m/m , ISM Manufacturing Prices . | Factory Orders m/m , IBD/TIPP Economic Optimism . | ADP Non-Farm Employment Change , Final Services PMI , ISM Non-Manufacturing PMI , Crude Oil Inventories . | Trade Balance , Unemployment Claims , Prelim Nonfarm Productivity q/q , Prelim Unit Labor Costs q/q , Natural Gas Storage . | Non-Farm Employment Change , Unemployment Rate , Average Hourly Earnings m/m , NIESR GDP Estimate , Labor Market Conditions Index m/m , Consumer Credit m/m . |
| UK/EURO ZONE | Spanish Manufacturing PMI , Italian Manufacturing PMI , Final Manufacturing PMI , Manufacturing PMI . | PPI m/m , Halifax HPI m/m . | Spanish Unemployment Change , Spanish Services PMI , Italian Services PMI , Final Services PMI , Services PMI , Retail Sales m/m , BRC Shop Price Index y/y . | German Factory Orders m/m , Official Bank Rate , Asset Purchase Facility , MPC Rate Statement , | Construction PMI , Trade Balance . |
| INDIA | Auto sales No, HSBC Manufacturing PMI no | RBI Credit Policy | | HSBC service PMI no | |

Consensus Estimate Q3FY15

| BSE Code | NSE Code | Sales (Cr.) | Sales Growth(%) | PAT(Cr.) | PAT Growth (%) |
|----------|------------|--------------|-----------------|-----------|----------------|
| 500410 | ACC | 2882.70 | 7.00 | 228.60 | 8.00 |
| 533573 | APLLTD | 569.70 | 17.30 | 82.20 | 24.70 |
| 500101 | ARVIND | 1987.20 | 12.00 | 93.80 | (8.20) |
| 500493 | BHARATFORG | 1053.10 | 26.60 | 158.60 | 68.80 |
| 532454 | BHARTIARTL | 23489.00 | 7.10 | 1505.30 | 146.70 |
| 500335 | BIRLACORPN | 757.60 | 6.70 | 11.10 | (30.30) |
| 500825 | BRITANNIA | 1856.60 | 15.00 | 113.20 | 17.50 |
| 500093 | CROMPGREAV | 3451.40 | 3.00 | 90.10 | 45.30 |
| 500480 | CUMMINSIND | 1147.60 | 12.20 | 154.40 | 4.90 |
| 532155 | GAIL | 14694.30 | (8.00) | 856.60 | (35.80) |
| 532424 | GODREJCP | 2275.70 | 15.00 | 226.70 | 15.90 |

| | | | | | |
|--------|------------|----------|--------|---------|---------|
| 533248 | GPPL | 200.20 | 37.90 | 117.10 | 92.90 |
| 500676 | GSKCONS | 941.50 | 12.20 | 93.70 | 17.50 |
| 500182 | HEROMOTOCO | 6801.90 | (0.60) | 675.30 | 28.70 |
| 532814 | INDIANB | 1206.60 | 10.60 | 335.10 | 26.70 |
| 534816 | INFRATEL | 2991.40 | 9.50 | 482.30 | 17.50 |
| 524494 | IPCALAB | 859.00 | 3.10 | 100.50 | (27.80) |
| 532286 | JINDALSTEL | 5320.40 | (1.10) | 226.40 | (59.70) |
| 533155 | JUBLFOOD | 566.20 | 24.00 | 35.00 | 4.00 |
| 532899 | KSCL | 150.50 | 13.50 | 42.90 | 18.00 |
| 500257 | LUPIN | 3278.20 | 14.80 | 555.90 | 38.90 |
| 531642 | MARICO | 1438.00 | 20.00 | 151.80 | 12.20 |
| 526371 | NMDC | 2849.40 | 0.90 | 1466.50 | (6.40) |
| 532522 | PETRONET | 11648.80 | 24.20 | 249.20 | 83.80 |
| 532461 | PNB | 4434.60 | 5.10 | 888.10 | 17.60 |
| 500387 | SHREECEM | 1603.30 | 21.70 | 56.10 | (52.60) |
| 532733 | SUNTV | 569.70 | 12.10 | 202.90 | 9.20 |
| 500570 | TATAMOTORS | 66210.60 | 3.70 | 4343.40 | (11.40) |
| 500470 | TATASTEEL | 35177.60 | (4.20) | 261.70 | (47.90) |
| 532343 | TVSMOTORS | 2594.50 | 26.10 | 94.30 | 37.00 |
| 512070 | UNIPHOS | 2982.10 | 12.70 | 216.40 | (17.40) |

Result Q3FY15

| NSE Code | BSE Code | Sales (Cr.) | Sales Growth(%) | PAT(Cr.) | PAT Growth (%) |
|--------------------|----------|--------------|-----------------|-----------|----------------|
| DALMIABHA | 533309 | 785.20 | 12.10 | 0.10 | 100.80 |
| KOKUYOCLMN | 523207 | 109.50 | 17.00 | 0.20 | 105.06 |
| SWARAJENG | 500407 | 102.00 | (32.10) | 8.30 | (46.62) |
| Welspun India Ltd. | 514162 | 1346.00 | 17.40 | 143.60 | 31.20 |
| HIKAL | 524735 | 225.00 | 4.00 | 9.40 | (8.56) |
| OU DHSUG | 507260 | 385.80 | 68.10 | (24.60) | 20.85 |
| ESABINDIA | 500133 | 111.00 | (0.10) | 5.10 | (27.76) |
| GRINDWELL | 506076 | 279.00 | 17.00 | 25.40 | 44.70 |
| VAIBHAVGBL | 532156 | 398.00 | 6.20 | 38.80 | 22.10 |
| KIRLOSFERR | 500245 | 336.50 | 6.30 | 15.80 | 33.90 |
| TAJGVK | 532390 | 68.30 | 4.60 | 2.70 | (17.93) |
| SKSMICRO | 533228 | 184.41 | 38.30 | 41.05 | 91.55 |
| HCLTECH | 532281 | 4247.59 | 10.70 | 1663.00 | 28.13 |
| TCI | 532349 | 555.00 | 7.80 | 17.80 | 23.70 |
| LGBBROSLTD | 500250 | 264.01 | 3.70 | 14.46 | (14.99) |
| TATAGLOBAL | 500800 | 2143.00 | 3.00 | 84.24 | (29.50) |
| KANSAINER | 500165 | 887.00 | 7.60 | 65.66 | 33.73 |
| GUJBOROSIL | 523768 | 37.89 | 21.00 | 0.33 | (80.81) |
| ZEELEARN | 533287 | 19.83 | (12.60) | 1.09 | 132.25 |
| SIEMENS | 500550 | 2185.95 | (8.70) | 634.00 | 873.44 |
| ECLERX | 532927 | 241.60 | 10.10 | 60.80 | (2.40) |
| MAHLIFE | 532313 | 238.78 | 66.30 | 32.80 | 12.40 |
| NTPC | 532555 | 18858.09 | 3.60 | 3074.00 | 7.43 |
| DABUR | 500096 | 2079.00 | 8.90 | 282.78 | 16.40 |
| SUNDARFIN | 590071 | 574.43 | 0.40 | 110.95 | 7.14 |
| KIRLOSBROS | 500241 | 392.84 | (10.50) | (71.20) | (461.42) |
| ADANIANT | 512599 | 17849.84 | 29.80 | 443.85 | 550.80 |
| IFCI | 500106 | 833.63 | 5.40 | 133.77 | (6.05) |
| JSWSTEEL | 500228 | 11505.18 | (15.50) | 414.69 | (11.10) |

| | | | | | |
|--------------|--------|---------|---------|---------|-----------|
| MONSANTO | 524084 | 133.88 | (26.60) | 48.34 | (25.76) |
| NEULANLAB | 524558 | 107.74 | (18.10) | 1.92 | (71.85) |
| GABRIEL | 505714 | 358.00 | 5.50 | 16.90 | 20.03 |
| TECHM | 532755 | 5751.00 | 17.40 | 805.30 | (20.30) |
| AARTIDRUGS | 524348 | 259.18 | 16.70 | 22.75 | 60.66 |
| BERGERPAINT | 509480 | 1117.00 | 8.50 | 82.13 | (0.20) |
| IFBIND | 505726 | 330.44 | 18.80 | 15.79 | 78.62 |
| HERITGFOOD | 519552 | 510.92 | 20.60 | 5.48 | (59.56) |
| BOROGLASS | 502219 | 48.40 | 11.20 | 6.96 | (35.85) |
| THERMAX | 500411 | 1146.56 | 13.10 | 76.20 | 14.33 |
| AEGISCHEM | 500003 | 86.57 | (6.70) | 35.56 | 568.42 |
| SAINTGOBAIN | 515043 | 32.89 | 34.40 | 1.63 | 565.71 |
| EXCELINDUS | 500650 | 117.14 | 17.80 | 8.49 | 506.43 |
| THOMASCOOK | 500413 | 743.34 | 59.70 | 18.16 | 38.20 |
| ENGINERSIN | 532178 | 398.33 | (5.20) | 59.92 | (55.61) |
| USHAMART | 517146 | 888.00 | 7.30 | (43.59) | (4503.03) |
| 3MINDIA | 523395 | 442.71 | 3.50 | 16.65 | 385.42 |
| ADORFO | 530431 | 33.85 | 3.00 | 2.19 | (20.94) |
| ASHIKACR | 590122 | 0.75 | (57.60) | 0.52 | 173.24 |
| ASHOKA | 533271 | 384.19 | 8.90 | 14.54 | (30.03) |
| BINANIIND | 500059 | 21.34 | (31.40) | 11.81 | 128.72 |
| BINNYMILLS | 535620 | 1.92 | (4.50) | 0.17 | 41.67 |
| CARBORUNIV | 513375 | 503.23 | (3.30) | 22.11 | 111.20 |
| CENTUM | 517544 | 130.28 | 16.20 | 11.20 | 13.00 |
| CONFINT | 504340 | 0.48 | 23.10 | 0.20 | 66.67 |
| COROENGG | 533167 | 33.15 | (34.40) | (6.98) | (9871.43) |
| DALMIASUG | 500097 | 260.07 | (31.70) | (17.56) | 50.00 |
| EIHAHOTELS | 523127 | 74.53 | 9.00 | 15.13 | 20.37 |
| EMPIND | 509525 | 85.41 | 4.20 | 10.51 | 18.49 |
| FORTUNEF | 530023 | 0.85 | (62.60) | (1.03) | (1816.67) |
| FULFORD | 506803 | 49.14 | (12.00) | (6.44) | (285.06) |
| GNFC | 500670 | 1141.82 | (16.50) | (46.03) | (142.76) |
| HINDUJAVEN | 500189 | 32.94 | 15.30 | 26.69 | 13.38 |
| IVC | 511208 | 50.01 | (4.30) | 18.74 | 0.20 |
| IBWSL | 533520 | 49.07 | (33.80) | 4.04 | (44.00) |
| INDOCO | 532612 | 216.66 | 15.00 | 21.62 | 53.12 |
| INDOWIND | 532894 | 1.27 | (61.60) | 0.03 | 103.03 |
| INDRAMEDCO | 532150 | 175.54 | 4.70 | 6.75 | (13.24) |
| INDUSFIN | 531841 | 1.80 | 164.70 | 0.04 | 111.43 |
| WIDIA | 505890 | 142.79 | 7.60 | 6.00 | 305.48 |
| LKPMERFIN | 507912 | 50.32 | 449.90 | 10.67 | 513.22 |
| MICROSEC | 533259 | 11.77 | 78.90 | (3.42) | (66.80) |
| MOTILALOSWAL | 532892 | 185.60 | 60.20 | 35.91 | 911.50 |
| MUTHTFN | 511766 | 47.19 | 16.80 | 5.34 | 3.69 |
| NEPCMICON | 500301 | 0.05 | (96.30) | 0.08 | 117.78 |
| NATNLSTEEL | 513179 | 974.42 | 13.20 | 7.82 | 6.11 |
| OILCOUNTUB | 500313 | 94.53 | (17.40) | 2.43 | (77.52) |
| OSCAR | 501179 | 14.83 | (3.60) | 6.46 | (35.85) |
| P V R Ltd. | 532689 | 420.31 | 24.80 | 31.55 | 122.80 |
| PARAMOUNT | 530555 | 121.78 | (30.80) | (37.71) | 17.60 |
| PENTSFWARE | 500329 | 1.13 | (15.00) | 0.27 | 35.00 |
| PILANIINV | 590121 | 4.05 | 9.50 | 2.71 | (46.55) |

| | | | | | |
|-------------|--------|---------|---------|----------|----------|
| PIONRINV | 507864 | 4.86 | (35.30) | 0.26 | (64.38) |
| RAJGLOWIR | 517522 | 58.47 | 1.90 | 0.78 | (70.90) |
| RATNAMANI | 520111 | 499.52 | 39.10 | 52.52 | 46.13 |
| ROYALORCHID | 532699 | 39.93 | 3.30 | (0.03) | 99.80 |
| SJCORP | 504398 | 9.43 | (19.60) | 0.12 | 141.38 |
| SAFARIND | 523025 | 49.02 | 26.00 | (0.25) | 24.24 |
| SHOPERSTOP | 532638 | 764.43 | 7.70 | 13.78 | (20.53) |
| SMARTLINK | 532419 | 18.20 | (50.70) | 2.31 | 2.67 |
| LANCOIN | 513605 | 308.02 | 20.00 | 21.38 | 142.13 |
| STOREONE | 532679 | 37.60 | 25.10 | 4.65 | (27.91) |
| ZSULABEN | 508969 | 0.23 | (4.20) | 0.10 | (33.33) |
| SPARC | 532872 | 31.28 | (50.30) | (18.91) | (161.06) |
| TPLPLAST | 526582 | 43.88 | (9.20) | 1.80 | 4.05 |
| TTML | 532371 | 738.56 | 8.30 | (169.08) | (8.14) |
| TIMEXWATCH | 500414 | 43.15 | 6.90 | (1.51) | 48.64 |
| TRITONV | 505978 | 43.76 | 6.90 | 1.45 | 202.08 |
| UPERGANGES | 530505 | 249.17 | 56.40 | (15.64) | (12.44) |
| UMESLTD | 532398 | 0.57 | 307.10 | (0.56) | 63.87 |
| WALCHPF | 501370 | 4.34 | 6.10 | 0.16 | (61.90) |
| WHIRLPOOL | 500238 | 721.41 | 7.20 | 31.54 | 48.42 |
| XPROINDIA | 590013 | 59.80 | 16.50 | (11.57) | (249.55) |
| DIVISLAB | 532488 | 791.12 | 14.80 | 220.58 | 0.71 |
| GRASIM | 500300 | 8036.00 | 12.90 | 336.10 | 1.30 |



Narnolia Securities Ltd

124, 1st floor 7/ 1, Lords Sinha Road Kolkata 700071, Ph 033-22821251 Toll Free no : 1-800-345-4000

email: research@narnolia.com,

website : www.narnolia.com

Risk Disclosure & Disclaimer: This report/message is for the personal information of the authorized recipient and does not construe to be any investment, legal or taxation advice to you. Narnolia Securities Ltd. (Hereinafter referred as NSL) is not soliciting any action based upon it. This report/message is not for public distribution and has been furnished to you solely for your information and should not be reproduced or redistributed to any other person in any form. The report/message is based upon publicly available information, findings of our research wing "East wind" & information that we consider reliable, but we do not represent that it is accurate or complete and we do not provide any express or implied warranty of any kind, and also these are subject to change without notice. The recipients of this report should rely on their own investigations, should use their own judgment for taking any investment decisions keeping in mind that past performance is not necessarily a guide to future performance & that the value of any investment or income are subject to market and other risks. Further it will be safe to assume that NSL and /or its Group or associate Companies, their Directors, affiliates and/or employees may have interests/ positions, financial or otherwise, individually or otherwise in the recommended/mentioned securities/mutual funds/ model funds and other investment products which may be added or disposed including & other mentioned in this report/message.