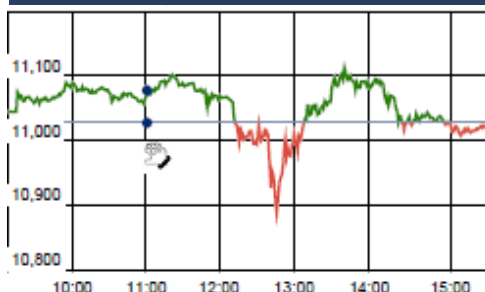


KEY LEVELS

Support 1 : 10880
Support 1 : 10782

Resistance 1 : 11130
Resistance 2 : 11268

Nifty Intraday Chart



Market Outlook

Indian equities gave a very volatile movement throughout the day on Thursday and after opening on a green note Nifty fell to make an intraday low of 10879.35 and then it continuously rose to make a high of 11117.00. At the end of the day the index closed near flat at 11016.90. The small cap and midcap indices slightly under-performed the benchmark index and closed the day after losing 0.4%-0.6%.

On the sectoral front, some selling pressure was witnessed in Pharmaceutical, Banking stocks while Auto and FMCG indices closed in green. The breadth of the market was slightly negative with more declines than advances.

Budget 2018 was expected to be more populist due to this being last full budget before the next general election, but the budget is much more balanced. For economy, the rise of 20% in infra spending and attempt to raise farm income is highly positive. We believe equity market in the calendar year 2018 would be more about earning growths than anything else. On-going Q3 quarter results are unfolding almost in-line with the street expectations. And double-digit growth for Nifty EPS in FY18 is almost secured.

Though there does not yet appear any threat to this on-going rally in terms of market technicals, it's worth to remember that stock market can never be a one-way street. So it would be prudent to continue trading long but with trailing stop loss. If Nifty retests lows made post-budget that would signal a correction has finally set in after the relentless rally of last 14 months.

Quote of the Day : "When purchasing depressed stock in troubled companies, seek out the ones with the superior financial positions and avoid the ones with loads of bank debt."

Peter Lynch

Market

Market	Value	% Change
Morning Traded Market		
SGX NIFTY	10,915.50	-1.20%
NIKKIE	23,158.16	-1.42%
HANG SENG	32,321.42	-0.99%
Yesterday Closing Market		
Sensex	35,906.66	-0.16%
Nifty	11,016.90	-0.10%
DOW	26,186.71	0.14%
NASDAQ	7,385.86	-0.35%
CAC	5,454.55	-0.50%
DAX	13,003.90	-1.43%
FTSE	7,490.39	-0.58%
EW ALL SHARE	20,202.00	-0.13%

% Change in 1 day

Commodity Price (Yesterday Closing)

Commodity/Currencies	Value	% Change
GOLD	30505.00	1.29%
SILVER	39309.00	-0.03%
CRUDEOIL	69.74	0.03%
NATURALGAS	183.70	-3.57%
DOLLAR/RS.	64.02	0.69%
EURO/RS.	79.63	0.56%
POUND/RS.	91.14	1.37%

% Change in 1 day

Institutional Turnover

FII			
Investor	Buy(Cr.)	Sale(Cr.)	Net(Cr.)
01-Feb-18	7658	6559	1100
Feb-18	7658	6559	1100
2018	134222	124654	9568
DII			
Investor	Buy(Cr.)	Sale(Cr.)	Net(Cr.)
01-Feb-18	5002	5360	(359)
Feb-18	93030	92631	399
2018	93030	92631	399

Event Today Interim Dividend

EDELWEISS : Rs 1.05/-

PERSISTENT : Rs 7/-

(Ex Date : 2. 2.2018)

Buy Back of Shares

ECLERX

(Ex Date : 2. 2.2018)

Result

AEGISLOG, BAJAJ-AUTO, BAYERCROP
DALMIASUG, DIGJAMLT, GAYATRI
GLAXO, GODREJPROP, GRAPHITE
HATHWAYB, HINDALCO, INOXWIND
MAHSEAMLES, MIRZAIN, MRPL
RPLIFE, RTNPOWER, TAJGVK
TATAGLOBAL, THOMASCOOK
TATAMETALI, UBL, WHIRLPOOL

Concall

J&K Bank : 10:30 AM

Magma Fincorp, Cummins : 11AM

Navin Fluoint : 11:30 AM

CCL Products : 12:00 AM

Coromandel Int, HEG : 2:00 PM

Bajaj Finserv , Lakshmi Vilas : 3:00 PM

Neuland Lab, Royal Orch: 3:30 PM

CEAT, JK Lakshmi, Hindalco: 4:00 PM

Aditya Birla Fashion, JK Paper : 4:00 PM

Godrej Prop, BSE LTD : 4:30 PM

Pricol : 5:00 PM, Info Edge : 5:30 PM ,

Tata Global : 7:00 PM

Union Budget 2018

2nd Feb 2018

Aiming at high growth, low current account deficit and high investment, Finance Minister Mr Arun Jaitley revealed Union budget of 2018. The balanced budget is focused on ideological shift to ease doing business and enjoy with various investment opportunities. For sure, this budget was not a set of big bang budget or not influenced by any political pressure. But, the government reiterated its commitment to medium-term consolidation by maintaining the -3% target. Finance Minister revised fiscal deficit estimates for the current financial year upwards at Rs 5.95 trillion or 3.5 percent of GDP. We believe Overall, the budget was balanced, pragmatic and positive for overall scenario, but we are uncertain if there will be any imminent rate reduction from the central bank.

SUVEN

"BUY"

1st Feb 2018

Suven continued to post excellent quarterly performance in 3QFY18. The company reported net sales of Rs.164 Crores in 3QFY18. This was largely driven by healthy CRAMS growth of 57% QoQ growth due to the movement of the molecule from one stage to other stage. Considering the potential for scaling up in the CRAMS segment which has high margins coupled with the commercial/pre-commercial supplies, strong balance sheet and improving return ratios, we are positive about the long-term outlook for the company. Factoring the upcoming growth opportunities we value the stock at 20 times of FY19 Expected EPS and maintain BUY while retaining our target price of Rs 268.

*For details, refer to our daily report- *India Equity Analytics***Top News****Ashoka Buildcon Q3FY18 Concall**

- ◆ Submitted couple of bids worth Rs.1500 Cr and expect to open soon.
- ◆ Had participated into 1000 Km of projects but could not win any of these due to higher competitive intensity. But now it has come down and management is witnessing rational bidding.
- ◆ Pickup in economic activity increased mining activity on key project Sambhalpur, Belgaum and shift in trade from Kolkata port to Haldia port (port traffic using Dhamkuni road) led to strong traffic growth.
- ◆ Traffic growth in next quarter is likely to maintain and for FY19 traffic growth move along with growth in GDP.
- ◆ Long time stalled project Jharkhand Chaas has started to move up. Currently 90% of land is available for construction.
- ◆ NHAI has decided not to terminate Islampur Bypass road project despite agitation by the local framers and Mgt. expect movement in execution work shortly.
- ◆ Work on city gas distribution projects will start before March and major revenue will come in next year.
- ◆ currently, participate in 16000 Ce worth of bid and expect to win 4000-5000 Cr in next 4-5 months.
- ◆ Management is waiting for more clarity regarding usage of projects for land development project near Navi Mumbai airport and will take decision according that.
- ◆ Company will not compromise with margin for acquiring new orders and EBITDA M will be maintain at 12-13%
 - ◆ Not seen much bid happening on Power T&D segment and share of it likely to come down from 30% to 25% in order book.
 - ◆ Delay in receipt of payment led to increase in short term borrowing. Payment of 230 Cr supposed to be received in December but it come in January and now debt is under control.
 - ◆ Ashoka is pre qualified for Nagpur Express way and Lucknow balia projects and will participate for bid. Total 10 no. of projects to be bid out.
 - ◆ Tax rate for 17-18 will be 22%, FY18-19 22-24% and it will be increase as benefit of 80IA will come down
 - ◆ Expect annuity payment before March for Chennai ORR
 - ◆ Equity Requirement:- Ludhiana 95 Cr (50% in FY19 & FY20 each),

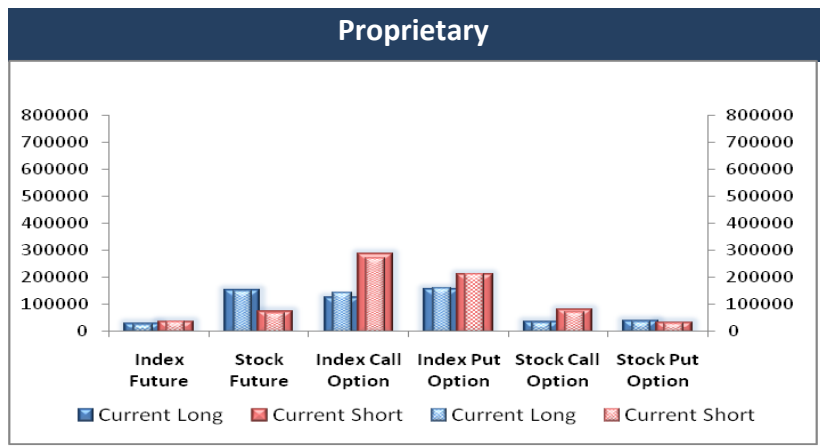
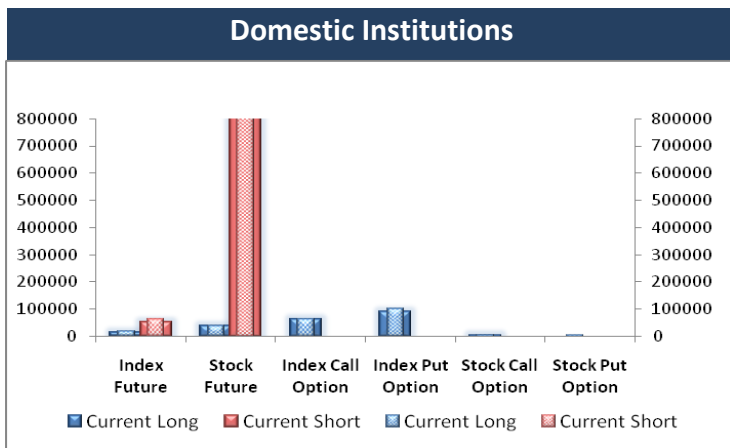
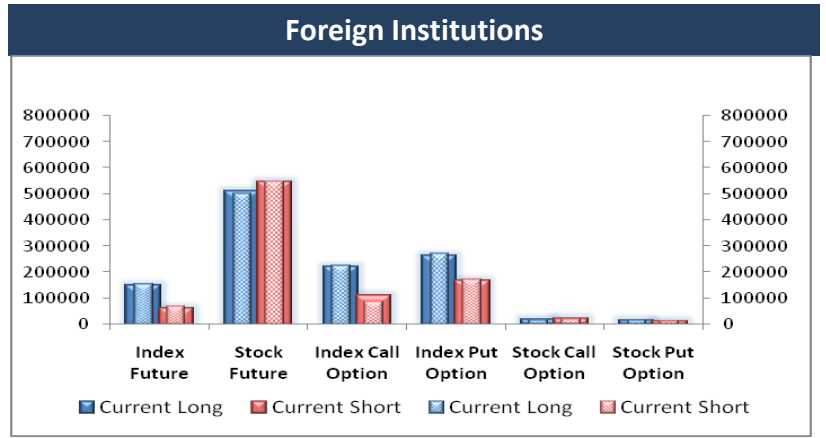
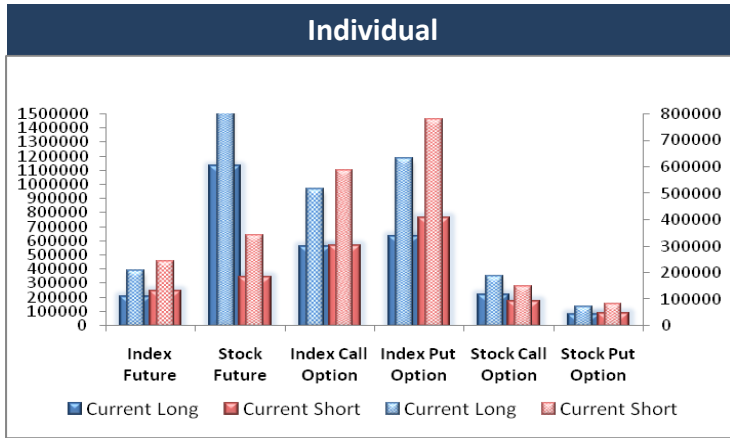
JSWSTEEL CONSOLIDATED 3QFY18 Concall highlights:

- >> Higher sales volume because of focus on increasing exports sales volume (up 24% QoQ) and increase in demand for long products.
- >> Coated products volume got impacted because of planned shutdown of 2 of its galvanizing lines at Tarapur for maintenance and revamping to enhance production capacities.
- >> Price of coated products took time to catch up & is expected to pick up in 4QFY18.
- >> Steel prices increased by 5-6% but are still are at discount to international prices.
- >> Coking coal prices are expected to be \$10-\$15 more per ton QoQ basis.
- >> Steel Prices are expected to be range bound in 4Q. Long products prices are expected to be better than flat products and sustain in 4QFY18.
- >> Out of 5 mines acquired by company 2 mines are expected to be commissioned in FY18 and would have combined reserve of .71 million ton of iron ore, required approvals for rest 3 mines are expected to be obtained by 30 September 2018 & would amount to 4.71 million tons of iron ore reserved (5 mines combined).
- >> Revenue acceptance of Rs.1249 crore and capex acceptance of Rs.194 crore.
- >> Weighted average interest cost at 7.03%.
- >> Capex guidance reduced from Rs.8000 crore in FY18 to around Rs.6000 crore.
- >> 4QFY18 expected to be better than other three quarters led by better volume and better realization.
- >> Exceptional item of Rs.264 crore provision for impairment towards Goodwill, Mining Development and advances relating to surrender of one of its iron ore mine in Chile.
- >> Corporate Income tax rate in US has been reduced to 21% which led to reversal of deferred tax liabilities amounting to Rs.572 crores for the US business.

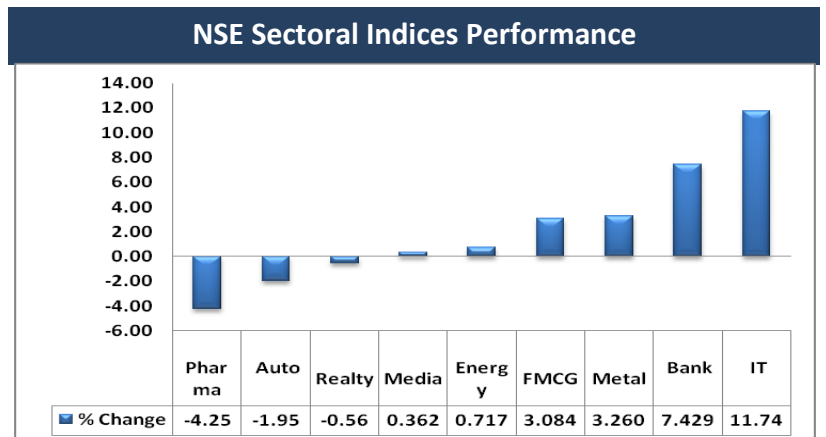
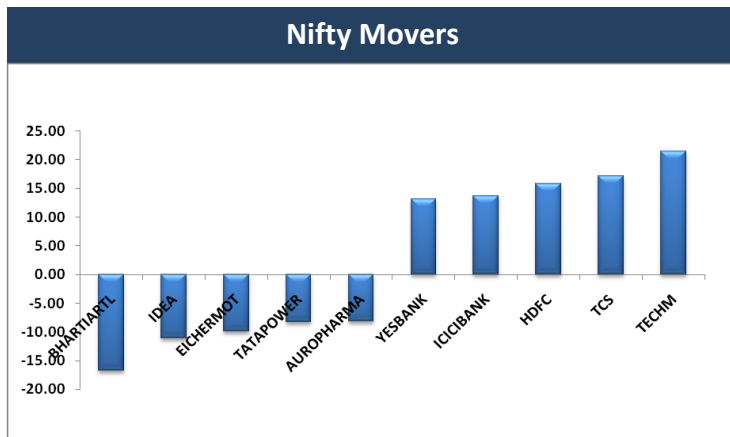
Block Deal

Exchange	Deal Date	Company	Client Name	Deal Type	Quantity	Price
NSE	01-Feb-18	JISLJALEQS	CROSSLAND TRADING CO	BUY	2808229	134
NSE	01-Feb-18	JISLJALEQS	SOCIETE GENERALE	BUY	3096442	135
NSE	01-Feb-18	FORTIS	SOCIETE GENERALE	SELL	3456616	130
NSE	01-Feb-18	JISLJALEQS	CROSSLAND TRADING CO	SELL	2808229	134

F&O OPEN INTEREST (Number of Contracts)



MARKET MOVERS (1 MONTH CHANGE)



Result Calendar Q3FY18

Bse Code	Company Name	Date	Bse Code	Company Name	Date
523395	3MINDIA	2-Feb-18	505100	INRADIA	2-Feb-18
535755	ABFRL	2-Feb-18	511034	JINDRILL	2-Feb-18
532268	ACCELYA	2-Feb-18	532304	KJMCCORP	2-Feb-18
523411	ADCINDIA	2-Feb-18	530235	KJMCFIN	2-Feb-18
500003	AEGISLOG	2-Feb-18	507912	LKPFIN	2-Feb-18
526847	ASHSI	2-Feb-18	540192	LKPSEC	2-Feb-18
505506	AXONVL	2-Feb-18	500265	MAHSEAMLES	2-Feb-18
531268	B2BSOFT	2-Feb-18	514418	MANORG	2-Feb-18
532977	BAJAJ-AUTO	2-Feb-18	538942	MERCANTILE	2-Feb-18
500490	BAJAJHLDNG	2-Feb-18	526642	MIRZAIN	2-Feb-18
509053	BANASFN	2-Feb-18	506261	MODISNME	2-Feb-18
522004	BATLIBOI	2-Feb-18	500109	MRPL	2-Feb-18
506285	BAYERCROP	2-Feb-18	532777	NAUKRI	2-Feb-18
524332	BCL	2-Feb-18	524558	NEULANLAB	2-Feb-18
531029	BHATEXT	2-Feb-18	512626	ORBTEXP	2-Feb-18
505681	BIMETAL	2-Feb-18	509782	OSEASPR	2-Feb-18
533108	BTTL	2-Feb-18	532486	POKARNA	2-Feb-18
533272	CEBBCO	2-Feb-18	526043	POLYCHMP	2-Feb-18
502445	CITADEL	2-Feb-18	539354	POLYSPIN	2-Feb-18
540403	CLEDUCATE	2-Feb-18	532460	PONNIERODE	2-Feb-18
500097	DALMIASUG	2-Feb-18	500540	PREMIER	2-Feb-18
519588	DFM	2-Feb-18	521149	PRIMEURB	2-Feb-18
539979	DIGJAMLT	2-Feb-18	531273	RADHEDE	2-Feb-18
526783	DRAGARWQ	2-Feb-18	530291	RAJAGRO	2-Feb-18
500128	ELECTCAST	2-Feb-18	524037	RAMAPHO	2-Feb-18
536507	FLFL	2-Feb-18	539435	RFSL	2-Feb-18
500153	GANESHBE	2-Feb-18	532983	RPGLIFE	2-Feb-18
500155	GARDENSILK	2-Feb-18	534597	RTNINFRA	2-Feb-18
532183	GAYATRI	2-Feb-18	533122	RTNPOWER	2-Feb-18
500660	GLAXO	2-Feb-18	539346	SADBHIN	2-Feb-18
533150	GODREJPROP	2-Feb-18	530525	SHEETAL	2-Feb-18
505576	GOLDCORP	2-Feb-18	520086	SICAL	2-Feb-18
509488	GRAPHITE	2-Feb-18	503229	SIMPLXREA	2-Feb-18
509546	GRAVISSHO	2-Feb-18	514454	SOUTLAT	2-Feb-18
506076	GRINDWELL	2-Feb-18	503659	SW1	2-Feb-18
539522	GROVY	2-Feb-18	532390	TAJGVK	2-Feb-18
539336	GUJGAS	2-Feb-18	500800	TATAGLOBAL	2-Feb-18
507960	GUJHOTE	2-Feb-18	513434	TATAMETALI	2-Feb-18
532855	HARYNACAP	2-Feb-18	500413	THOMASCOOK	2-Feb-18
509073	HATHWAYB	2-Feb-18	530475	TINNARUBR	2-Feb-18
500440	HINDALCO	2-Feb-18	532375	TIPSINDLTD	2-Feb-18
522073	HITECHGEAR	2-Feb-18	514236	TRUPTWI	2-Feb-18
540750	IEX	2-Feb-18	507747	TTKHEALTH	2-Feb-18
509162	INDAG	2-Feb-18	532371	TTML	2-Feb-18
523586	INDTONER	2-Feb-18	532478	UBL	2-Feb-18
539083	INOXWIND	2-Feb-18	524408	UNIVSTAR	2-Feb-18

500238	WHIRLPOOL	2-Feb-18	508905	SMIFS	3-Feb-18
590013	XPROINDIA	2-Feb-18	522152	SOLIMAC	3-Feb-18
511601	YASHMGM	2-Feb-18	516038	SOMAPPR	3-Feb-18
512381	ZNIVEMER	2-Feb-18	524667	SOTL	3-Feb-18
512587	ZODJRD MKJ	2-Feb-18	506105	STANROS	3-Feb-18
524208	AARTIIND	3-Feb-18	519483	TAIIND	3-Feb-18
530499	AKCAPIT	3-Feb-18	539871	THYRO CARE	3-Feb-18
532141	ANDHRACEMT	3-Feb-18	532477	UNIONBANK	3-Feb-18
539469	APUNKA	3-Feb-18	532867	V2RETAIL	3-Feb-18
526662	ARENTERP	3-Feb-18	524200	VINATIO RGA	3-Feb-18
511605	ARIHCAPM	3-Feb-18	534392	VSSL	3-Feb-18
524695	ASIANFR	3-Feb-18	514470	WINSOMTX	3-Feb-18
532330	BIOPAC	3-Feb-18	507817	WIREFABR	3-Feb-18
531595	CGCL	3-Feb-18	505872	WPIL	3-Feb-18
507515	CJGEL	3-Feb-18	532039	ZENOTECH	3-Feb-18
531460	CONTICON	3-Feb-18	533339	ZENTEC	3-Feb-18
539527	CREATIVE	3-Feb-18	539661	ACEMEN	5-Feb-18
517437	DUTRON	3-Feb-18	539391	ACME	5-Feb-18
524226	GAEL	3-Feb-18	523120	ADORMUL	5-Feb-18
532630	GOKEX	3-Feb-18	517041	ADORWELD	5-Feb-18
539206	GVBL	3-Feb-18	506767	ALKYLAMINE	5-Feb-18
517077	INDAGIV	3-Feb-18	530799	ANNAINFRA	5-Feb-18
532341	IZMO	3-Feb-18	540616	ARTEMIS	5-Feb-18
524330	JAYAGROGN	3-Feb-18	513401	ASHIS	5-Feb-18
532644	JKCEMENT	3-Feb-18	540788	ASPIRA	5-Feb-18
505750	JOSTS	3-Feb-18	506820	ASTRAZEN	5-Feb-18
526409	KKALPANAIND	3-Feb-18	540649	AVADHSUGAR	5-Feb-18
517206	LUMAXIND	3-Feb-18	519105	AVTNPL	5-Feb-18
539519	MAYUKH	3-Feb-18	500042	BASF	5-Feb-18
523792	MAZDALTD	3-Feb-18	500530	BOSCHLTD	5-Feb-18
524709	NACLIND	3-Feb-18	532548	CENTURYPLY	5-Feb-18
540769	NIACL	3-Feb-18	540310	CFL	5-Feb-18
506532	NITTAGELA	3-Feb-18	521210	CITYMAN	5-Feb-18
526747	PGFOILQ	3-Feb-18	540678	COCHINSHIP	5-Feb-18
500459	PGHH	3-Feb-18	500830	COLPAL	5-Feb-18
523642	PIIND	3-Feb-18	508814	COSMOFILMS	5-Feb-18
531688	PRITHVIEXCH	3-Feb-18	526821	DAICHI	5-Feb-18
539359	PRITIKAUTO	3-Feb-18	532700	ENIL	5-Feb-18
519014	PRSNTIN	3-Feb-18	531508	EVEREADY	5-Feb-18
507966	RASRESOR	3-Feb-18	508954	FINKURVE	5-Feb-18
530517	RELAXO	3-Feb-18	530023	FORTUNEF	5-Feb-18
533470	RUSHIL	3-Feb-18	540647	GANGESSEC	5-Feb-18
506906	SCBL	3-Feb-18	531608	GORANIN	5-Feb-18
530075	SELAN	3-Feb-18	501455	GREAVESCOT	5-Feb-18
502450	SESHAPAPER	3-Feb-18	523836	GUJRAFIA	5-Feb-18
513709	SHILGRAVQ	3-Feb-18	506879	GUJTHEM	5-Feb-18
539584	SIPTL	3-Feb-18	538652	HCLTD	5-Feb-18
526479	SKYIND	3-Feb-18	503881	HINDSYNTEX	5-Feb-18
513418	SMFIL	3-Feb-18	540530	HUDCO	5-Feb-18

500106	IFCI	5-Feb-18	519242	SRDAPRT	5-Feb-18
517380	IGARASHI	5-Feb-18	532879	SSLEL	5-Feb-18
531594	INCON	5-Feb-18	501110	SUNRINV	5-Feb-18
512405	IPOWER	5-Feb-18	500570	TATAMOTORS	5-Feb-18
532642	JSWHL	5-Feb-18	570001	TATAMTRDVR	5-Feb-18
511060	JUMBFNL	5-Feb-18	534369	TBZ	5-Feb-18
500234	KAKATCEM	5-Feb-18	501242	TCIFINANCE	5-Feb-18
533451	KARMAENG	5-Feb-18	530199	THEMISMED	5-Feb-18
518011	KEERTHI	5-Feb-18	504973	TIFHL	5-Feb-18
533302	KICL	5-Feb-18	522113	TIMKEN	5-Feb-18
502150	KLYNCEM	5-Feb-18	506808	TUTIALKA	5-Feb-18
500235	KSL	5-Feb-18	539874	UJJIVAN	5-Feb-18
531842	LAHOTIOV	5-Feb-18	506690	UNICHEMLAB	5-Feb-18
526947	LAOPALA	5-Feb-18	526799	UNQTYMI	5-Feb-18
514036	LOYALTEX	5-Feb-18	517146	USHAMART	5-Feb-18
532906	MAANALU	5-Feb-18	522267	VJLAXMIE	5-Feb-18
500268	MANALIPETC	5-Feb-18	533452	WEIZFOREX	5-Feb-18
532654	MCLEODRUSS	5-Feb-18	505533	WESTLIFE	5-Feb-18
522241	MMFL	5-Feb-18	507892	WINSOMEDJ	5-Feb-18
533080	MOLDTKPAC	5-Feb-18	511642	WISEC	5-Feb-18
539819	MUDRA	5-Feb-18	506178	ZKHATAUE	5-Feb-18
508670	NEAGI	5-Feb-18	532682	ABGSHIP	6-Feb-18
530733	NOVAPUB	5-Feb-18	538935	ABHIFIN	6-Feb-18
504378	NYSSACORP	5-Feb-18	540025	ADVENZYMES	6-Feb-18
533317	OMKARCHEM	5-Feb-18	532774	AFL	6-Feb-18
524820	PANAMAPET	5-Feb-18	532683	AIAENG	6-Feb-18
503031	PENINLAND	5-Feb-18	535467	AIFL	6-Feb-18
506605	POLYCHEM	5-Feb-18	532633	ALLSEC	6-Feb-18
540717	PQIF	5-Feb-18	531681	AMARDEE	6-Feb-18
514354	PREMIERPOL	5-Feb-18	531991	AMRAAGRI	6-Feb-18
509220	PTL	5-Feb-18	523537	APMIN	6-Feb-18
532441	RAINBOWDQ	5-Feb-18	500877	APOLLOTYRE	6-Feb-18
506975	RAJSPTR	5-Feb-18	531847	ASTAR	6-Feb-18
500354	RAJSREESUG	5-Feb-18	512195	BENTCOM	6-Feb-18
532826	RAJTV	5-Feb-18	509480	BERGEPAIN	6-Feb-18
500358	RAMAPETRO	5-Feb-18	539662	BFLAFL	6-Feb-18
530271	RICHUNV	5-Feb-18	535620	BINNYMILLS	6-Feb-18
515043	SAINTGOBAIN	5-Feb-18	500060	BIRLACABLE	6-Feb-18
520075	SAMKRG	5-Feb-18	500067	BLUESTARCO	6-Feb-18
530617	SAMPRE	5-Feb-18	539304	CANOPYFIN	6-Feb-18
538992	SAPL	5-Feb-18	500870	CASTROLIND	6-Feb-18
540203	SFL	5-Feb-18	500280	CENTENKA	6-Feb-18
531290	SHDYECH	5-Feb-18	530191	CHROMATIC	6-Feb-18
530295	SHRAJOI	5-Feb-18	533288	CLARIS	6-Feb-18
505515	SHYMINV	5-Feb-18	530843	CUPID	6-Feb-18
512131	SIGNETIND	5-Feb-18	539596	DELTA	6-Feb-18
540679	SMSLIFE	5-Feb-18	500089	DICIND	6-Feb-18
538943	SONAL	5-Feb-18	506414	DIL	6-Feb-18

532839	DISHTV	6-Feb-18	524816	NATCOPHARM	6-Feb-18
523708	EIMCOELECO	6-Feb-18	504112	NELCO	6-Feb-18
511716	ESCORTSFIN	6-Feb-18	531272	NIKKIGL	6-Feb-18
523672	FLEXFO	6-Feb-18	500307	NIRLON	6-Feb-18
540064	FRETAIL	6-Feb-18	532481	NOIDATOLL	6-Feb-18
509550	GAMMONIND	6-Feb-18	532466	OFSS	6-Feb-18
513108	GANDHITUBE	6-Feb-18	511644	OMEGAIN	6-Feb-18
512443	GANONTR	6-Feb-18	540648	PALASHSEC	6-Feb-18
532764	GEECEE	6-Feb-18	532911	PARLESOFT	6-Feb-18
530263	GLOBALCA	6-Feb-18	500327	PILITA	6-Feb-18
505255	GMM	6-Feb-18	532461	PNB	6-Feb-18
509024	GOLDLEG	6-Feb-18	524210	PNTKYOR	6-Feb-18
538979	GRNLAMIND	6-Feb-18	532626	PONDYOXIDE	6-Feb-18
500690	GSFC	6-Feb-18	522205	PRAJIND	6-Feb-18
500160	GTL	6-Feb-18	526801	PSL	6-Feb-18
530001	GUJALKALI	6-Feb-18	531562	PUSHPIN	6-Feb-18
538567	GULFOILLUB	6-Feb-18	539814	RADHEY	6-Feb-18
519552	HERITGFOOD	6-Feb-18	500260	RAMCOCEM	6-Feb-18
500182	HEROMOTOCO	6-Feb-18	532369	RAMCOIND	6-Feb-18
526683	HOTELRUGBY	6-Feb-18	505800	RANEHOLDIN	6-Feb-18
504731	IBRIGST	6-Feb-18	532955	RECLTD	6-Feb-18
531314	INTCAPM	6-Feb-18	531539	RISHDIGA	6-Feb-18
536868	INTELSOFT	6-Feb-18	503635	SALSAIN	6-Feb-18
530519	INTERFAC	6-Feb-18	539252	SCFL	6-Feb-18
505737	INTLCOMBQ	6-Feb-18	524727	SDL	6-Feb-18
538422	JACKSON	6-Feb-18	509423	SEL	6-Feb-18
507981	JINDHOT	6-Feb-18	512297	SHANTAI	6-Feb-18
530049	JJEXPO	6-Feb-18	522034	SHANTIGEAR	6-Feb-18
523062	JJFINCOR	6-Feb-18	530797	SHGANEL	6-Feb-18
536493	JK AGRI	6-Feb-18	500550	SIEMENS	6-Feb-18
533148	JSWENERGY	6-Feb-18	519566	SIMRAN	6-Feb-18
526668	KAMATHOTEL	6-Feb-18	538562	SKIPPER	6-Feb-18
590130	KANCOTEA	6-Feb-18	532143	SKMEGGPROD	6-Feb-18
506938	KAPPH	6-Feb-18	539010	SMADL	6-Feb-18
532714	KEC	6-Feb-18	505827	SNL	6-Feb-18
519602	KELLTONTEC	6-Feb-18	500285	SPICEJET	6-Feb-18
505890	KENNAMET	6-Feb-18	540575	STARCEMENT	6-Feb-18
535730	KHOOBSURAT	6-Feb-18	507785	TAINWALCHM	6-Feb-18
511138	KOTHARIFIN	6-Feb-18	533170	TAMBOLI	6-Feb-18
532889	KPRMILL	6-Feb-18	505685	TAPARIA	6-Feb-18
533007	LGBFORGE	6-Feb-18	519091	TASTYBIT	6-Feb-18
539992	LLOYDSTEEL	6-Feb-18	500770	TATACHEM	6-Feb-18
533012	LPDC	6-Feb-18	500411	THERMAX	6-Feb-18
500257	LUPIN	6-Feb-18	500777	TNPETRO	6-Feb-18
540650	MAGADHSUGAR	6-Feb-18	512117	TWIROST	6-Feb-18
532525	MAHABANK	6-Feb-18	531091	UNITDCR	6-Feb-18
524084	MONSANTO	6-Feb-18	512511	VARUNME	6-Feb-18
511549	MORARKFI	6-Feb-18	517015	VINDHYATEL	6-Feb-18

509026	VJTFEDU	6-Feb-18
502986	VTL	6-Feb-18
590073	WHEELS	6-Feb-18
519224	WILLAMAGOR	6-Feb-18
512017	ZEXDONTR	6-Feb-18
512367	ZSHERAPR	6-Feb-18
512291	ZSPEEDCO	6-Feb-18
508987	ABACUS	7-Feb-18
530431	ADORFO	7-Feb-18
522273	AHMDSTE	7-Feb-18
526397	ALPHAGEO	7-Feb-18
526433	ASMTEC	7-Feb-18
530233	AUROLAB	7-Feb-18
524804	AUROPHARMA	7-Feb-18
509009	AUSOMENT	7-Feb-18
507944	BAJAJST	7-Feb-18
511724	BALFC	7-Feb-18
524828	BDH	7-Feb-18
500048	BEML	7-Feb-18
533095	BENGALASM	7-Feb-18
532930	BGREENERGY	7-Feb-18
524370	BODALCHEM	7-Feb-18
524742	CAPPL	7-Feb-18
500087	CIPLA	7-Feb-18
513353	COCHINM	7-Feb-18
523100	COSMOFE	7-Feb-18
532210	CUB	7-Feb-18
533309	DALMIABHA	7-Feb-18
539770	DARJEELING	7-Feb-18
540699	DIXON	7-Feb-18
505200	EICHERMOT	7-Feb-18
500125	EIDPARRY	7-Feb-18
505700	ELECON	7-Feb-18
522027	EMAINDIA	7-Feb-18
533161	EMMBI	7-Feb-18
500133	ESABINDIA	7-Feb-18
500650	EXCELINDUS	7-Feb-18
531599	FDC	7-Feb-18
500142	FGP	7-Feb-18
507910	FIBERWEB	7-Feb-18
505744	FMGOETZE	7-Feb-18
532809	FSL	7-Feb-18
534063	FUTSOL	7-Feb-18
532345	GATI	7-Feb-18
532767	GAYAPROJ	7-Feb-18
522275	GET&D	7-Feb-18
506186	GLXYENT	7-Feb-18
532957	GOKAKTEX	7-Feb-18
532980	GOKUL	7-Feb-18

526797	GREENPLY	7-Feb-18
514386	GUJCOTEX	7-Feb-18
524080	HARLETH	7-Feb-18
517271	HBLPOWER	7-Feb-18
532129	HEXAWARE	7-Feb-18
509895	HINDMILL	7-Feb-18
526761	HOWARHO	7-Feb-18
532835	ICRA	7-Feb-18
532514	IGL	7-Feb-18
506945	IGLFXPL-B	7-Feb-18
505539	IMCFINA	7-Feb-18
532100	INDOCITY	7-Feb-18
500207	INDORAMA	7-Feb-18
532717	INDOTECH	7-Feb-18
532150	INDRAMEDCO	7-Feb-18
532851	INSECTICID	7-Feb-18
505358	INTEGRAEN	7-Feb-18
524494	IPCALAB	7-Feb-18
509715	JAYSHREETEA	7-Feb-18
522263	JMCPROJECT	7-Feb-18
530985	JPTSEC	7-Feb-18
522287	KALPATPOWR	7-Feb-18
539276	KAYA	7-Feb-18
532054	KDDL	7-Feb-18
526423	KRITIIND	7-Feb-18
533210	KRITINUT	7-Feb-18
532899	KSCL	7-Feb-18
523594	KUNSTOFF	7-Feb-18
509048	LANCORHOL	7-Feb-18
505302	LXMIATO	7-Feb-18
500267	MAJESAUT	7-Feb-18
539044	MANAKSTELTD	7-Feb-18
505324	MANUGRAPH	7-Feb-18
539289	MJCO	7-Feb-18
539045	MNKALCOLTD	7-Feb-18
537092	MODEX	7-Feb-18
503776	MODIPON	7-Feb-18
538836	MONTECARLO	7-Feb-18
532621	MORARJEE	7-Feb-18
532991	MVL	7-Feb-18
508989	NAVNETEDUL	7-Feb-18
538772	NIYOGIN	7-Feb-18
530435	NOESISIND	7-Feb-18
516082	NRAGRINDQ	7-Feb-18
502165	OCL	7-Feb-18
539598	ORACLECR	7-Feb-18
531157	ORGOAT	7-Feb-18
531280	PANKAJPO	7-Feb-18
507864	PIONRINV	7-Feb-18

Earning Estimate Q3FY18

BSE CODE	NSE CODE	Sales Rs Cr	Sales YoY	Pat Rs Cr	PAT YoY
1-Feb-18	ASHOKLEY	6948	53.80	402	148.70
1-Feb-18	BAJAJFINSV	5563	22.70	224	24.00
1-Feb-18	CUMMINSIND	1431	5.60	210	6.00
1-Feb-18	POWERGRID	7179	10.40	2167	12.30
1-Feb-18	TITAN	4605	20.00	326	28.70
2-Feb-18	UBL	1189	16.00	67	31.40
2-Feb-18	BAJAJ-AUTO	6211	22.60	1053	13.90
2-Feb-18	GLAXO	786	14.00	108	207.80
2-Feb-18	HINDALCO	27977	15.20	1120	278.20
2-Feb-18	MRPL	13275	15.70	597	5.50
2-Feb-18	NAUKRI	226	21.40	69	46.40
3-Feb-18	JKCEMENT	1126	26.80	72	9.40
3-Feb-18	PGHH	766	19.00	153	1.80
3-Feb-18	PIIND	600	20.00	97	3.20
3-Feb-18	UNIONBANK	2412	12.90	123	18.10

Result Q3FY18

BSE CODE	NSE CODE	Sales Rs Cr	Sales YoY	Pat Rs Cr	PAT YoY
506579	ORIENTCARB	86	22.83	15	2.69
524000	MAGMA	580	(0.07)	65	74.83
508486	HAWKINCOOK	140	(0.95)	12	8.55
532805	REDINGTON	11728	7.00	76	(36.04)
500211	INSILCO	22	(1.90)	(1)	629.41
500710	AKZOINDIA	712	(2.55)	80	16.67
500477	ASHOKLEY	7113	57.50	450	178.07
519600	CCL	273	(4.62)	43	(6.02)
500878	CEATLTD	1575	13.64	82	2.49
532443	CERA	350	49.01	23	0.98
500480	CUMMINSIND	1318	(0.43)	172	(13.07)
500135	ESSELPACK	595	1.18	41	2.49
500150	FOSECOIND	92	6.34	7	6.11
500290	MRF	3798	19.59	342	18.64
532366	PNBGILTS	68	(58.95)	(14)	(121.10)
532898	POWERGRID	7506	13.22	2040	5.70
500114	TITAN	4086	6.47	308	21.79
500464	UCALFUEL	149	0.97	12	93.53
532794	ZEEMEDIA	143	47.33	16	48.84

Economic Calendar

Country	Monday 29th Jan 18	Tuesday 30th Jan 18	Wednesday 31th Jan 18	Thursday 1st Feb 18	Friday 2nd Feb 18
US	Core PCE Price Index m/m , Personal Spending m/m, Personal Income m/m	S&P/CS Composite-20 HPI y/y , CB Consumer Confidence	Challenger Job Cuts y/y , Employment Cost Index q/q , Chicago PMI , Pending Home Sales m/m , Crude Oil Inventories , FOMC Statement , Federal Funds Rate	ADP Non-Farm Employment Change , Unemployment Claims , Prelim Nonfarm Productivity q/q , Prelim Unit Labor Costs q/q , Final Manufacturing PMI , ISM Manufacturing PMI , Construction Spending m/m , ISM Manufacturing Prices , Natural Gas Storage , Total Vehicle Sales.	Average Hourly Earnings m/m , Non-Farm Employment Change, Unemployment Rate , Factory Orders m/m
UK/EURO ZONE	French Consumer Spending m/m	German Retail Sales m/m , French Prelim CPI m/m , Spanish Flash CPI y/y , Italian Monthly Unemployment Rate , Net Lending to Individuals m/m ,Prelim Flash GDP q/q , 10-y Bond Auction	CPI Flash Estimate y/y , Core CPI Flash Estimate y/y, Unemployment Rate, French Flash GDP q/q	Manufacturing PMI , Spanish Manufacturing PMI , Italian Manufacturing PMI , French Final Manufacturing PMI , German Final Manufacturing PMI , Final Manufacturing PMI	Construction PMI , PPI m/m
INDIA				Auto sales No , Niekki Manufacturing PMI no & Union Budget	



Narnolia Securities Ltd

201 | 2nd Floor | Marble Arch Building | 236B-AJC Bose
Road | Kolkata-700 020 , Ph : 033-40501500

email: narnolia@narnolia.com,
website : www.narnolia.com

Risk Disclosure & Disclaimer: This report/message is for the personal information of the authorized recipient and does not construe to be any investment, legal or taxation advice to you. Narnolia Securities Ltd. (Hereinafter referred as NSL) is not soliciting any action based upon it. This report/message is not for public distribution and has been furnished to you solely for your information and should not be reproduced or redistributed to any other person in any form. The report/message is based upon publicly available information, findings of our research wing "East wind" & information that we consider reliable, but we do not represent that it is accurate or complete and we do not provide any express or implied warranty of any kind, and also these are subject to change without notice. The recipients of this report should rely on their own investigations, should use their own judgment for taking any investment decisions keeping in mind that past performance is not necessarily a guide to future performance & that the the value of any investment or income are subject to market and other risks. Further it will be safe to assume that NSL and /or its Group or associate Companies, their Directors, affiliates and/or employees may have interests/ positions, financial or otherwise, individually or otherwise in the recommended/mentioned securities/mutual funds/ model funds and other investment products which may be added or disposed including & other mentioned in this report/message.