

SGX NIFTY : 8543 (23 Pt Up)

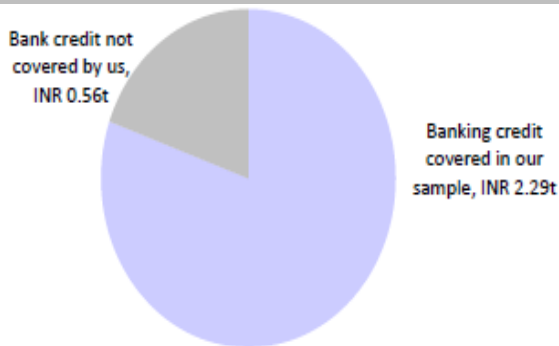
Quote of the Day

"If I was running \$1 million today, or \$10 million for that matter, I'd be fully invested. Anyone who says that size does not hurt investment performance is selling. The highest rates of return I've ever achieved were in the 1950s. I killed the Dow. You ought to see the numbers. But I was investing peanuts then. It's a huge structural advantage not to have a lot of money. I think I could make you 50% a year on \$1 million. No, I know I could. I guarantee that."

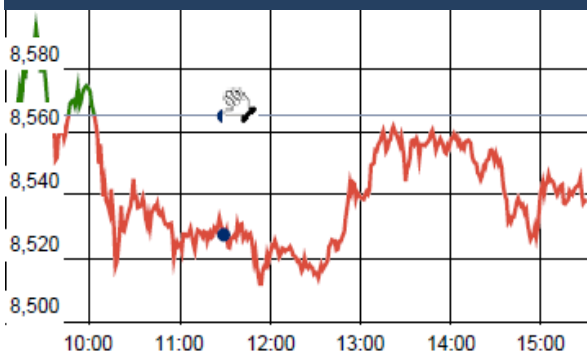
Warren Buffett

Chart of the Day

Bank Credit to steel Sectors



Index Action Nifty (15th July 16)



Index

Contents	Page	Coverage
News	2	Update
Economic Calendar	3	Update

Market

Name	Value	Change
Sensex	27,836.50	(105.61)
Nifty	8541.40	(23.60)
DOW	18,516.55	10.44
NASDAQ	5,029.59	(4.47)
CAC	4,372.51	(13.01)
DAX	10,066.90	(1.40)
FTSE	6,669.24	14.77
NIKKEI	16,497.85	111.97
HANG SENG	21,755.34	96.09
EW ALL SHARE	14847.87	(44.54)

Instituional Turnover

FII

Investor	Buy(Cr.)	Sale(Cr.)	Net(Cr.)
15-Jul-16	5823.50	4362.24	1461.26
July,16	4308.60	4983.92	(675.32)
2016	826265.95	824114.23	2151.72

DII

Investor	Buy(Cr.)	Sale(Cr.)	Net(Cr.)
15-Jul-16	2439.65	3473.62	(1033.97)
July,16	2396.86	1714.93	681.93
2016	328695.18	286062.29	42632.89

Commodity Price

Commodity/Currencies	Value	
GOLD	30977.00	↑
SILVER	47275.00	↓
CRUDEOIL	46.56	↑
COPPER	334.00	↑
NATURALGAS	184.70	↑
DOLLAR/RS.	67.06	↑
EURO/RS.	74.17	↑
POUND/RS.	88.63	↑

Market Snapshot

Top Price Performers

Top Performers 1D	% Change	Top Performers 1W	% Change	Top Performers 1M	% Change
BVCL	19.90	JYOTISTRUC	35.76	ARSSINFRA	76.03
JHS	19.87	SIMPLEX	34.66	AMTEKINDIA	71.41
LAKSHMIEFL	19.83	GODFRYPHLP	29.22	SPMLINFRA	65.00
DECNGOLD	19.54	JINDCOT	28.29	REIAGROLTD	62.16
TAJGVK	14.59	CHEMFALKAL	25.76	NITCO	61.74

Worst Performers 1D	% Change	Worst Performers 1W	% Change	Worst Performers 1M	% Change
ISIBARS	(19.23)	VIVIDHA	(24.82)	MANDHANA	(71.42)
BIRLACOT	(12.50)	LLOYDSTEEL	(24.21)	DCMSRMIND	(67.94)
JAYBARMARU	(9.93)	BLBLIMITED	(19.86)	SUNASIAN	(29.61)
INFY	(8.81)	WSI	(19.36)	SHRENUJ	(27.94)
FORTISFIN	(8.69)	SHREEKRPOL	(19.23)	WESTE	(21.59)

Top News

- **PNC Infratech** has been declared L1 (lowest bidder) for orders worth Rs 881 crore for laning of National Highway in Rajasthan. The order is under a hybrid annuity model . The execution time is expected to be 6 months and equity return to be around 15-16 percent. After bagging this order, the company aims to grow at 20 percent in FY17 . The current orderbook for the company is Rs 5,200 crore and order worth Rs 3,700 crore is also expected this fiscal. Company expect our total orderbook to be Rs 8,000 crore by FY17-end

- **Canara Bank Mgt Guideline** : Government is yet to communicate to banks regarding disbursement of funds to tackle the stressed asset situation . Some recent reports had suggested that government will give funds to public sector lenders sooner than expected. Company doesn't see the need to raise funds in current fiscal. The bank had raised funds via tier-II bonds worth Rs 3,000 crore in April this year and about Rs 947 crore and Rs 2,400 crore in last fiscal. On the non-performing loans, he says that most of the NPAs have been recognized. Bank don't see surprises during the current fiscal

- **Bharat Forge** Seeks shareholder nod to mortgage assets for securing loan up to Rs 3,500 crore . Kalyani Group companies have subscribed to fresh issuance of Kalyani Strategic Systems (KSSL) shares . Dilution of stake in KSSL has no impact on company

- **Adani Ports and Special Economic Zone Ltd** has informed that India Ratings & Research has assigned "Provisional IND AA+" rating with a stable outlook for proposed Non-Convertible Debentures (NCDs) of Rs. 1,000 crores to the Company.

- **BHEL** starts 250 MW eco-friendly CFBC technology-based lignite power plant in Gujarat . Bharat Heavy Electricals has successfully commissioned another 250 MW unit based on eco-friendly circulating fluidized bed combustion technology, using low quality coal as the primary fuel.

- **NBCC implementing-** agency for three General Pool Residential Accommodation colonies at Sarojini Nagar, Nauroji Nagar and Netaji Nagar in Delhi

- **Monsanto** its board would review the revised nearly \$ 65-billion takeover bid from German pharma and chemical giant Bayer AG. In May, Bayer AG had announced a \$ 62-billion all-cash offer to acquire Monsanto Co but the same was rejected by the latter. Bayer had raised its all-cash offer to Monsanto shareholders from \$ 122 to \$ 125/share. It also offered a \$ 1.5-billion reverse anti-trust break fee.

- **Educomp Solutions Unit** enters JV with Ebix Soft to incorporate company Ebix Educomp Learning . The Unit Educomp Software to hold 49 percent in Ebix Educomp Learning

- **U.S. consumer sentiment fell** to a seasonally adjusted 89.5, from 93.5 in the preceding month. Analysts had expected UoM consumer sentiment to remain unchanged at 93.5 last month.

- **U.S. Business Inventories** rose to a seasonally adjusted 0.2%, from 0.1% in the preceding month. Analysts had expected U.S. Business Inventories to rise 0.1% last month

- **New Zealand said that CPI** rose to a seasonally adjusted 0.4%, from 0.2% in the preceding quarter . Analysts had expected CPI to rise 0.5% in the last quarter.

- **Israeli GDP** rose to a seasonally adjusted annual rate of 1.7%, from 1.3% in the preceding month. Analysts had expected Israeli GDP to rise 1.4% last month.

- **Federal Reserve** said that industrial production rose to 0.6%, from -0.3% in the preceding month whose figure was revised up from -0.4%. Analysts had expected industrial production to rise 0.2% last month.

- **U.S. CPI** rose to 0.2%, from 0.2% in the preceding month . Analysts had expected CPI to rise 0.3% last month.

BSE Code	Company Name	Result Date	BSE Code	Company Name	Result Date
524412	AREYDRG	18-Jul-16	505283	KIRLPNU	22-Jul-16
513729	AROGRANITE	18-Jul-16	532720	M&MFIN	22-Jul-16
503960	BBL	18-Jul-16	533179	PERSISTENT	22-Jul-16
539681	DAL	18-Jul-16	532661	RML	22-Jul-16
500086	EXIDEIND	18-Jul-16	500674	SANOFI	22-Jul-16
511288	GRUH	18-Jul-16	504960	STEWARTQ	22-Jul-16
505982	HINDUJAFO	18-Jul-16	532410	TRANSCOR	22-Jul-16
500696	HINDUNILVR	18-Jul-16	526433	ASMTEC	23-Jul-16
532819	MINDTREE	18-Jul-16	524330	JAYAGROGN	23-Jul-16
531212	NALINLEA	18-Jul-16	526299	MPHASIS	23-Jul-16
517536	ONWARDTEC	18-Jul-16	502450	SESHAPAPER	23-Jul-16
526905	PADMAIND	18-Jul-16	506690	UNICHEMLAB	23-Jul-16
539495	RAJOTINV	18-Jul-16	507525	AMRITCORP	25-Jul-16
524727	SPANDIAQ	18-Jul-16	520119	ASAL	25-Jul-16
504961	TATAYODOGA	18-Jul-16	523708	EIMCOELECO	25-Jul-16
531950	VERTEX	18-Jul-16	500171	GHCL	25-Jul-16
534741	VIRTUALG	18-Jul-16	523398	HITACHIOM	25-Jul-16
500174	GLFL	19-Jul-16	500266	MAHSCOOTER	25-Jul-16
523457	LINDEINDIA	19-Jul-16	500126	MERCK	25-Jul-16
532538	ULTRACEMCO	19-Jul-16	532777	NAUKRI	25-Jul-16
507685	WIPRO	19-Jul-16	532504	NAVINFLUOR	25-Jul-16
500093	CROMPGREAV	20-Jul-16	532988	RANEENGINE	25-Jul-16
500150	FOSECOIND	20-Jul-16	513010	TATASPONGE	25-Jul-16
507438	IFBAGRO	20-Jul-16	500425	AMBUJACEM	26-Jul-16
524109	KABRAEXTRU	20-Jul-16	532978	BAJAFINSV	26-Jul-16
521248	KITEX	20-Jul-16	500034	BAJFINANCE	26-Jul-16
531209	NUCLEUS	20-Jul-16	506395	COROMANDEL	26-Jul-16
523648	PLASTIBLEN	20-Jul-16	500124	DRREDDY	26-Jul-16
532663	SASKEN	20-Jul-16	500123	ELANTAS	26-Jul-16
500472	SKFINDIA	20-Jul-16	505700	ELECON	26-Jul-16
500002	ABB	21-Jul-16	532809	FSL	26-Jul-16
533228	BHARATFIN	21-Jul-16	509567	GOACARBON	26-Jul-16
532523	BIOCON	21-Jul-16	532659	IDFC	26-Jul-16
532792	CAIRN	21-Jul-16	539437	IDFCBANK	26-Jul-16
500670	GNFC	21-Jul-16	534816	INFRATEL	26-Jul-16
500180	HDFCBANK	21-Jul-16	504786	INVPRECQ	26-Jul-16
500292	HEIDELBERG	21-Jul-16	500250	LGBBROSLTD	26-Jul-16
505726	IFBIND	21-Jul-16	532756	MAHINDCIE	26-Jul-16
500241	KIRLOSBROS	21-Jul-16	523642	PIIND	26-Jul-16
500247	KOTAKBANK	21-Jul-16	532460	PONNIERODE	26-Jul-16
532987	RBL	21-Jul-16	500337	PRIMESECU	26-Jul-16
539268	SYNGENE	21-Jul-16	500407	SWARAJENG	26-Jul-16
532215	AXISBANK	22-Jul-16	500408	TATAELXI	26-Jul-16
506365	CHEMOPH	22-Jul-16	532343	TVSMOTOR	26-Jul-16
533167	COROENGG	22-Jul-16	532953	VGUARD	26-Jul-16
539844	EQUITAS	22-Jul-16	524129	VINYLINDIA	26-Jul-16
500469	FEDERALBNK	22-Jul-16	505412	WENDT	26-Jul-16

505537	ZEEL	26-Jul-16	539524	LALPATHLAB	29-Jul-16
500820	ASIANPAINT	27-Jul-16	500264	MAFATIND	29-Jul-16
500215	ATFL	27-Jul-16	500262	MAFATLAFIN	29-Jul-16
532977	BAJAJ-AUTO	27-Jul-16	530243	MANGASOF	29-Jul-16
500490	BAJAJHLDNG	27-Jul-16	531049	NEELKAN	29-Jul-16
500096	DABUR	27-Jul-16	500790	NESTLEIND	29-Jul-16
500123	ELANTAS	27-Jul-16	511702	PARSHINV	29-Jul-16
508906	EVERESTIND	27-Jul-16	501110	SUNRINV	29-Jul-16
511676	GICHSGFIN	27-Jul-16	532041	HINDBIO	30-Jul-16
500010	HDFC	27-Jul-16	500220	JASCH	30-Jul-16
504741	INDIANHUME	27-Jul-16	531221	MAYURFL	30-Jul-16
502330	IPAPPM	27-Jul-16	526831	NAINAMS	30-Jul-16
500730	NOCIL	27-Jul-16	530565	SSLFINANCE	30-Jul-16
526492	RISHIROOP	27-Jul-16	513488	SSWRL	30-Jul-16
511218	SRTRANSFIN	27-Jul-16	531762	UNJHAFOR	30-Jul-16
524542	SUKHJITS	27-Jul-16	524038	VENLONENT	30-Jul-16
530401	VINYOFL	27-Jul-16	516030	YASHPPR	30-Jul-16
532648	YESBANK	27-Jul-16	511403	SAIJEEV	31-Jul-16
500147	CMIFPE	28-Jul-16	523411	ADCINDIA	01-Aug-16
590031	DENORA	28-Jul-16	500067	BLUESTARCO	01-Aug-16
505790	FAGBEARING	28-Jul-16	590072	SUNDRMBRAK	01-Aug-16
500660	GLAXO	28-Jul-16	512527	SUPER	01-Aug-16
531600	GOGIACAP	28-Jul-16	509480	BERGEPAIN	03-Aug-16
517449	MAGNAELQ	28-Jul-16	531162	EMAMILTD	03-Aug-16
532313	MAHLIFE	28-Jul-16	500133	ESABINDIA	03-Aug-16
500313	OILCOUNTUB	28-Jul-16	531319	MARUTISE	03-Aug-16
504093	PANAENERG	28-Jul-16	500346	PUNJCOMMU	03-Aug-16
530931	STANPACK	28-Jul-16	500260	RAMCOCEM	03-Aug-16
532156	VAIBHAVGBL	28-Jul-16	500414	TIMEX	03-Aug-16
501370	WALCHPF	28-Jul-16	533217	HMVL	04-Aug-16
512587	ZODJRD MJ	28-Jul-16	534804	CARERATING	05-Aug-16
521097	AMARJOTHI	29-Jul-16	532662	HTMEDIA	05-Aug-16
511243	CHOLAFIN	29-Jul-16	500252	LAXMIMACH	05-Aug-16
517477	ELNET	29-Jul-16	530555	PARACABLES	05-Aug-16
523754	EPCIN	29-Jul-16	507747	TTKHEALTH	05-Aug-16
532424	GODREJCP	29-Jul-16	532133	IFGLREFRAC	06-Aug-16
519552	HERITGFOOD	29-Jul-16	532865	MEGH	06-Aug-16
532174	ICICIBANK	29-Jul-16	500830	COLPAL	08-Aug-16
500165	KANSAINER	29-Jul-16	522261	DOLPHINOFF	08-Aug-16
532652	KTKBANK	29-Jul-16	511208	IVC	08-Aug-16

590066	KCP	08-Aug-16	530609	CARNATIN	11-Aug-16
531213	MANAPPURAM	09-Aug-16	522064	HONDAPOWER	11-Aug-16
511632	OLYMTFI	09-Aug-16	505800	RANEHOLDIN	11-Aug-16
500338	PRISMCEM	09-Aug-16	523736	DPL	12-Aug-16
500085	CHAMBLFERT	10-Aug-16	538961	GENUSPAPER	12-Aug-16
500144	FINCABLES	10-Aug-16	504840	KAIRA	12-Aug-16
531500	RAJESHEXPO	10-Aug-16	530125	SAMRATPH	12-Aug-16
500411	THERMAX	10-Aug-16	506655	SUDARSCHEM	12-Aug-16
522113	TIMKEN	10-Aug-16	519191	JOLYMER	25-Aug-16
520113	VESUVIUS	10-Aug-16			

Economic Calendar

Country	Monday 18th July 16	Tuesday 19th July 16	Wednesday 20th July 16	Thursday 21th July 16	Friday 22th July 16
US	Philly Fed Manufacturing Index ,Unemployment Claims ,HPI m/m, Flash Manufacturing PMI , Flash Services PMI , CB Leading Index m/m , Natural Gas Storage.		Flash Manufacturing PMI , Flash Services PMI.	Core Durable Goods Orders m/m , Durable Goods Orders m/m , New Home Sales , S&P/CS Composite-20 HPI y/y , CB Consumer Confidence , New Home Sales .	HPI m/m , Existing Home Sales , Crude Oil Inventories .
UK/EURO ZONE	Current Account , Retail Sales m/m , Final CPI y/y , Final Core CPI y/y , ECB Monetary Policy Meeting Accounts .	German PPI m/m , Public Sector Net Borrowing .	French Flash Manufacturing PMI , French Flash Services PMI , Spanish Unemployment Rate , German Constitutional Court Ruling , German Flash Manufacturing PMI , German Flash Services PMI , Flash Manufacturing PMI, Flash Services PMI , Minimum Bid Rate , ECB	GfK Consumer Confidence .	German Final GDP q/q , CBI Realized Sales , Belgian NBB Business Climate .
INDIA					

Narnolia Securities Ltd.

Narnolia Research Lab

Stellar IT Park | 5th Floor | Office Space No. 6 | Tower-IIInd Plot No. C-25 | Sector-62 | Noida | Ph : 0120-4215110

Narnolia Securities Ltd.

201 | 2nd Floor | Marble Arch Building | 236B-AJC Bose Road Kolkata-700 020 Ph : 033-40501500
Email : narnolia@narnolia.com website :www.narnolia.com