

**Quote of the Day**

"We've long felt that the only value of stock forecasters is to make fortune tellers look good. Even now, Charlie (Munger) and I continue to believe that short-term market forecasts are poison and should be kept locked up in a safe place, away from children and also from grown-ups who behave in the market like children." **Warren**

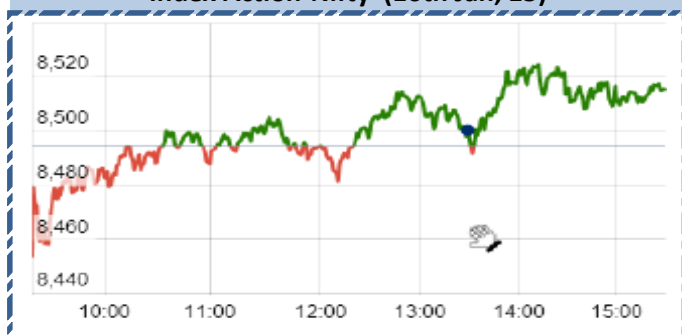
**SGX NIFTY : 8579**  
**( 59 pts Up)**

**Chart of the Day**

**Export Import Trend**



**Index Action-Nifty (16th Jan, 15)**



**Index**

Contents	Page	Coverage
News	3	UPDATE
Result Calendar Q3FY15	4 to 10	UPDATE
Result Q3FY15	11	UPDATE

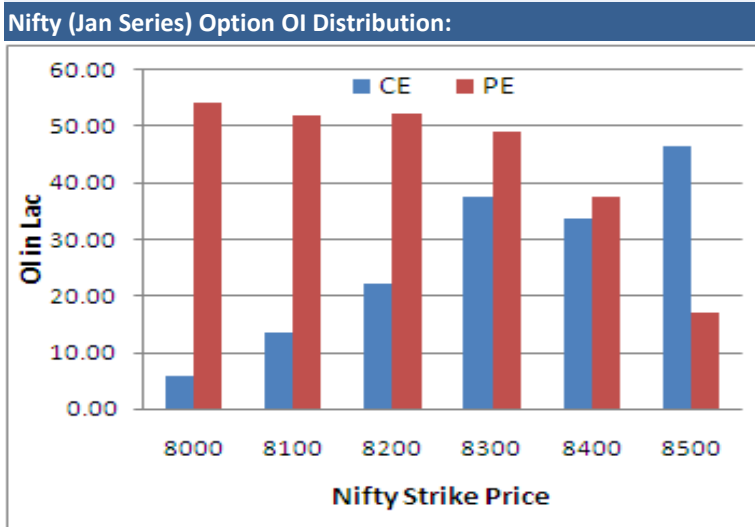
MARKET		
Name	Value	Change
Sensex	28121.89	46.34
Nifty	8513.2	19.65
DOW	17511.57	190.56
NASDAQ	4634.38	63.58
CAC	4379.62	56.42
DAX	10167.77	135.16
FTSE	6550.27	51.49
NIKKIE	16960.1	95.94
HANG SENG	24034.2	(69.32)
EW ALL SHARE	14342.30	55.93

INSTITUTIONAL TURNOVER			
FII			
Investor	Buy(Cr.)	Sale(Cr.)	Net(Cr.)
16th Jan	6718.16	5,618.23	1099.93
Jan,15	46905.33	46,315.55	589.78
2015	46905.33	46,315.55	589.78
DII			
Investor	Buy(Cr.)	Sale(Cr.)	Net(Cr.)
16th Jan	1417.60	2,134.51	(716.91)
Jan,15	20502.16	20,362.38	139.78
2015	20502.16	20,362.38	139.78

COMMODITY PRICE		
COMMODITY/CURRENCIES	Value	
GOLD	27654.00	↑
SILVER	39061.00	↑
CRUDEOIL	49.13	↑
COPPER	358.95	↓
NATURALGAS	192.80	↑
DOLLAR/RS.	61.87	↓
EURO/RS.	71.56	↓
POUND/RS.	93.71	↓

**Narnolia Securities Ltd.**

NIFTY SNAPSHOT	
Nifty Spot	8513.80(+19.65)
Nifty Jan 2014 Future	8536
Nifty Feb 2014 Future	8585
Nifty Jan 2014 Open Interest	20075000
Nifty Feb 2014 Open Interest	902650
7 DMA of Spot Nifty	8346
21 DMA of Spot Nifty	8278
50 DMA of Spot Nifty	8347
VOLATILITY INDEX (VIX)	17.27(+1.12)
PUT CALL RATIO	0.95



Activity of Nifty (Jan Series) Strike				
Strike	CALL		PUT	
	OI	% Chng	OI	% Chng
8000	564475	-11.31	5412825	-2.14
8100	1352050	-9.27	5187250	1.28
8200	2212775	-8.79	5237075	10.33
8300	3761575	-7.57	4922875	8.00
8400	3362825	-0.18	3759025	16.69
8500	4647150	-3.65	1709775	4.71

FIIs Activity (Fig in Cr)			
Segment	Buy	Sell	Net
INDEX FUTURE	1,371	2,219	(848)
INDEX OPTION	15,006	14,479	527
STOCK FUTURE	3,520	2,314	1,206
STOCK OPTION	2,371	2,357	13
<b>TOTAL</b>	<b>22,268</b>	<b>21,370</b>	<b>898</b>

Fresh Long Seen In (Rising OI -Rising Price)				
Scrip	OI	OI ch%	CMP	Ch%
SUNTV	17,14,000	77.1	418.1	11.3
LICHSGFIN	112,49,000	13.0	486.8	4.4
DABUR	18,91,000	11.9	251.7	0.9
CENTURYTEX	73,27,500	5.3	571.6	2.8
INDIACEM	216,76,000	5.2	102.2	5.4

Fresh Shorts Seen In: (Rising OI -Falling Price)				
Scrip	OI	OI ch%	CMP	Ch%
MARUTI	32,81,000	5.8	3613.9	-0.3
HINDALCO	355,50,000	5.7	138.5	-2.4
BHARTIARTL	149,99,500	5.5	342.6	-1.9
ANDHRABANK	176,56,000	5.2	92.6	-1.9
SYNDIBANK	142,38,000	5.1	128.4	-2.1

PCR (OI)			
STOCK	T1	T2	
POWERGRID	0.91	0.55	
LICHSGFIN	1.04	0.75	
APOLLOHOSP	0.35	0.27	
HINDZINC	0.38	0.29	
JPASSOCIAT	0.53	0.42	

PCR (OI)			
STOCK	T1	T2	
M&MFIN	0.24	0.36	
ULTRACEMCO	1.49	2.05	
BHARTIARTL	0.45	0.53	
GRASIM	1.14	1.33	
LUPIN	0.65	0.75	

## Markets Snapshot

### Top Price Performers

Top Performers 1D	% Change	Top Performers 1W	% Change	Top Performers 1M	% Change
ANDHRAPET	19.98	CHLOGIST	54.02	NTCIND	147.64
SURYAROSNI	19.97	NCOPPER	49.73	ERAINFRA	124.23
CEBBCO	19.96	ARSHIYA	48.06	ISFT	124.06
SHIVTEX	19.92	MIRZAIN	46.19	WEBELSOLAR	111.89
CHLOGIST	19.64	INDBANK	44.67	SUNDARAM	94.02

### Worst Price Performers

Worst Performers 1D	% Change	Worst Performers 1W	% Change	Worst Performers 1M	% Change
TTML	(9.96)	OUTCTYTRVL	(22.54)	INFODRIVE	(88.37)
AREALTY	(9.85)	REIAGROLTD	(21.47)	OUTCTYTRVL	(70.37)
NET4	(9.80)	RASOYPR	(20.56)	RASOYPR	(53.04)
SURYACHAKRA	(9.30)	KSERASERA	(20.10)	KSERASERA	(52.23)
SURANACORP	(9.16)	CURATECH	(18.49)	PRITI	(48.65)

### Top News :

- **Cyient Mgt Guideline** : Cyient is eyeing margins of around 16 percent going forward. The margins were better-than-expected led by better revenue growth. The company was expecting to complete and bill in Q4 got pulled into Q3, aiding the margins quite significantly. The company is confident of continuing revenue growth of around 3-4 percent quarter-on-quarter. Cyient is hopeful that Rangsons Acquisition should add USD 70-80 million to revenue for FY16. Rangsons has 12 percent margins but Cyient is planning to dilute it by around 1 percent.

- **DB Corp Mgt Guideline** : Company is confident of logging an even spectacular FY16. DB Corp Ltd, also known as the Dainik Bhaskar Group, is a leading print media company with its flagship Hindi daily newspaper, Dainik Bhaskar, Gujarati daily newspaper, Divya Bhaskar and Marathi daily newspaper, Dainik Divya Marathi. Company expects atleast a 10-20 percent growth in advertisements in Q4 and eyes one more edition launch in Bihar in FY16.

- **RBI issues guidelines for banks to set up insurance ventures** . RBI says Net worth of a bank should not be less than Rs 1,000 crore . Net NPAs of bank should not be more than 3 percent .Banks can undertake insurance business by setting up subsidiary or JV Banks can undertake insurance broking internally or via unit .Banks must maintain arm's length relationship with insurance business Capital To Risk Weighted Assets Ratio (CRAR) of bank should not be less than 10 percent . Bank should have made profit for last 3 continuous years . Track record of arm's performance should be satisfactory.

- **AXIS Bank Ltd** has approved issuance of Long Term Bonds / Non-convertible debentures upto Rs. 15,000 crores on a private placement basis. The approval of shareholders of the Bank in terms of the provisions of Companies Act 2013 is proposed to be obtained by way of Postal Ballot.

- **Zuari Agro Chemicals Ltd** has informed that the operations of Ammonia and Urea Plants of the Company have shutdown due to high pressure drop across the Low Temperature Shift Converter. The Catalyst is in the process of being replaced.

- **Adani Enterprises** has approved the proposal to divest the Company's holding of 70.75 crore Equity shares in Maharashtra Eastern Grid Power Transmission Co. Ltd (MEGPTCL), to Adani Transmission Ltd, a Wholly Owned Subsidiary of the Company .

- **Sunil Capital & Securities** sold 1,10,185 shares of Valecha Engineering at Rs 107.21 on the NSE. Blue Ocean Investment Trust sold 1,000,000 shares of Sterling Holiday Resorts at Rs 219.96 on the BSE. Agrim Marketing bought 2,50,000 shares of SE Investments at Rs 259.00 on the NSE. India Value Fund III-A sold 2,221,000 shares of Mahindra CIE at Rs 227.29 on the NSE.

- **China's foreign direct investment (FDI)** rose an annual 1.7% last year, although the pace slowed from 2013 as a cooling economy and shifting drivers of growth weighed on offshore investment flows. China attracted a record \$119.56 billion from foreign investors last year compared to \$117.6 billion in 2013, the Ministry of Commerce said in a statement.

- **The Swiss National Bank unexpectedly** scrapped its three-year policy of capping the Swiss franc against the euro in a U-turn . Switzerland's central bank scrapped its policy of capping the Swiss franc at 1.20 to the euro .

- **U.S. consumer sentiment** rose to a seasonally adjusted 98.2, from 93.6 in the preceding month. Analysts had expected UoM consumer sentiment to rise to 94.1 last month.

- **U.S. TIC long term purchases** rose to a seasonally adjusted 33.5B, from -1.4B in the preceding month. Analysts had expected U.S. TIC long term purchases to rise 27.3B last month.

## Result Calendar Q3FY15

Bse Coade	Company Name	Date	Bse Coade	Company Name	Date
538863	AMARNATH	19-Jan-15	500174	GLFL	20-Jan-15
531795	ATULAUTO	19-Jan-15	534328	HEXATRADEX	20-Jan-15
523229	BHARATSE-\$	19-Jan-15	533217	HMVV	20-Jan-15
532346	BLUESTINFO	19-Jan-15	530055	HRMNYCP	20-Jan-15
519600	CCL	19-Jan-15	517380	IGARASHI	20-Jan-15
501833	CHOWGULSTM	19-Jan-15	500378	JINDALSAW	20-Jan-15
538608	DWITIYA	19-Jan-15	532642	JSWHL	20-Jan-15
532491	ECEIND-\$	19-Jan-15	538539	JTAPARIA	20-Jan-15
530655	GOODLUC	19-Jan-15	512147	KAJALSY	20-Jan-15
511288	GRUH	19-Jan-15	533293	KIRLOSENG	20-Jan-15
507960	GUJHOTE	19-Jan-15	500247	KOTAKBANK	20-Jan-15
500183	HFCL	19-Jan-15	512505	MEENST	20-Jan-15
509675	HIL	19-Jan-15	532504	NAVINFLUOR	20-Jan-15
500696	HINDUNILVR	19-Jan-15	522205	PRAJIND	20-Jan-15
500188	HINDZINC	19-Jan-15	500355	RALLIS	20-Jan-15
532960	IBSEC	19-Jan-15	507649	RASOI	20-Jan-15
535789	IBULHSGFIN	19-Jan-15	532692	RMCL	20-Jan-15
533257	INDOSOLAR	19-Jan-15	536666	SFCL	20-Jan-15
500213	ITHL-\$	19-Jan-15	531322	SHAKTIGAS	20-Jan-15
524378	JMDEPACKR	19-Jan-15	531431	SHAKTIPUMP-\$	20-Jan-15
506184	KANANIIND	19-Jan-15	538685	SHEMAROO	20-Jan-15
500262	MAFATLAFIN	19-Jan-15	538565	SHUBHRA	20-Jan-15
532819	MINDTREE	19-Jan-15	532218	SOUTHBANK	20-Jan-15
531821	MUNOTHFI	19-Jan-15	504961	TATAYODOGA-\$	20-Jan-15
511401	MUNOTHI	19-Jan-15	512303	ZMANSOON	20-Jan-15
532777	NAUKRI	19-Jan-15	512004	ZNILKENG	20-Jan-15
532663	SASKEN	19-Jan-15	531581	ALKADIA	21-Jan-15
517320	SAVINFOCO	19-Jan-15	500012	ANDHRAPET	21-Jan-15
507984	SERIND	19-Jan-15	522005	AUSTENG	21-Jan-15
513262	SSWL	19-Jan-15	500067	BLUESTARCO	21-Jan-15
513010	TATASPONGE	19-Jan-15	532548	CENTURYPLY	21-Jan-15
538464	TPROJECT	19-Jan-15	504008	EMCO-\$	21-Jan-15
506680	TRELCH-B	19-Jan-15	508906	EVERESTIND	21-Jan-15
533644	UJAAS	19-Jan-15	524669	HESTERBIO	21-Jan-15
531390	UPSURGE	19-Jan-15	507438	IFBAGRO	21-Jan-15
531950	VERTEX	19-Jan-15	531807	INGVYSYABK	21-Jan-15
504067	ZENSARTECH	19-Jan-15	500214	IONEXCHANG-\$	21-Jan-15
538465	AMARSEC	20-Jan-15	500875	ITC	21-Jan-15
532694	BARTRONICS	20-Jan-15	590053	KARMOB-\$	21-Jan-15
500042	BASF	20-Jan-15	532400	KPIT	21-Jan-15
509438	BENARAS	20-Jan-15	533519	L&TFH	21-Jan-15
512404	BENGALS	20-Jan-15	531027	LIBORD	21-Jan-15
524606	BERLDRG	20-Jan-15	511593	LIBORDFIN	21-Jan-15
531582	BERYLSE	20-Jan-15	512455	LLOYDSME	21-Jan-15
511196	CANFINHOME	20-Jan-15	530065	LORDSHOTL	21-Jan-15
531595	CGCL	20-Jan-15	532654	MCLEODRUSS	21-Jan-15
506365	CHEMOPH	20-Jan-15	523828	MENONBE-\$	21-Jan-15
507886	DHRUVES	20-Jan-15	512522	NEPTEXP	21-Jan-15
531471	DUKEOFS	20-Jan-15	531395	PADAMCO	21-Jan-15
532511	EXCELCROP	20-Jan-15	508941	PANCARBON-\$	21-Jan-15

511734	PASUFIN	21-Jan-15	533121	SQSBFSI	22-Jan-15
532826	RAJTV	21-Jan-15	532374	STRTECH	22-Jan-15
532988	RANEENGINE	21-Jan-15	524542	SUKHJITS-\$	22-Jan-15
500330	RAYMOND	21-Jan-15	509930	SUPREMEIND	22-Jan-15
531201	SHILCTECH	21-Jan-15	512257	SVARTCORP	22-Jan-15
503811	SIYSIL	21-Jan-15	510245	SWASTIVI	22-Jan-15
500405	SUPPETRO	21-Jan-15	513434	TATAMETALI	22-Jan-15
519604	SURFI	21-Jan-15	532262	TCIIND	22-Jan-15
500408	TATAELXSI	21-Jan-15	523301	TCPLPACK-\$	22-Jan-15
512011	TEATIME	21-Jan-15	504966	TINPLATE	22-Jan-15
532410	TRANSCOR	21-Jan-15	512064	VISTR	22-Jan-15
507747	TTKHEALTH	21-Jan-15	534976	VMART	22-Jan-15
517506	TTKPRESTIG	21-Jan-15	509966	VSTIND	22-Jan-15
514142	TTL-\$	21-Jan-15	511038	ZARCOLEA	22-Jan-15
505537	ZEEL	21-Jan-15	532794	ZEEMEDIA	22-Jan-15
504988	ZWELCAST	21-Jan-15	534742	ZUARI	22-Jan-15
522273	AHMDSTE	22-Jan-15	531161	ABMKNO	23-Jan-15
506235	ALEMBICLTD	22-Jan-15	523411	ADCINDIA	23-Jan-15
526397	ALPHAGEO-\$	22-Jan-15	532309	AIL	23-Jan-15
512247	ASHCAP	22-Jan-15	527001	ASHAPURMIN	23-Jan-15
512433	ASUTENT	22-Jan-15	500027	ATUL	23-Jan-15
500215	ATFL	22-Jan-15	503960	BBL-\$	23-Jan-15
526849	BANARBEADS	22-Jan-15	500049	BEL	23-Jan-15
532523	BIOCON	22-Jan-15	500830	COLPAL	23-Jan-15
532792	CAIRN	22-Jan-15	506395	COROMANDEL	23-Jan-15
506401	DEEPAKNI	22-Jan-15	501148	DSINVEST	23-Jan-15
519588	DFM	22-Jan-15	532922	EDELWEISS	23-Jan-15
532839	DISHTV	22-Jan-15	523754	EPCIN	23-Jan-15
500630	ESSARPORTS	22-Jan-15	590065	IMPAL	23-Jan-15
500179	HCL-INSYS	22-Jan-15	501151	KARTKIN	23-Jan-15
502330	IPAPPM	22-Jan-15	506528	KELENRG	23-Jan-15
505283	KIRLPNU	22-Jan-15	507948	KEYCORP	23-Jan-15
523704	MASTEK	22-Jan-15	532924	KOLTEPATIL	23-Jan-15
533088	MHRIL	22-Jan-15	526596	LIBERTSHOE	23-Jan-15
512065	MRUTR	22-Jan-15	501471	MACK	23-Jan-15
533398	MUTHOOTFIN	22-Jan-15	526642	MIRZAINI	23-Jan-15
532200	MYSOREBANK	22-Jan-15	503015	MODERN-\$	23-Jan-15
508924	NORTHPR	22-Jan-15	531096	MOUNTEVE	23-Jan-15
535754	ORIENTCEM	22-Jan-15	532416	NEXTMEDIA	23-Jan-15
500162	PARRYSUGAR	22-Jan-15	530175	ODYSSEY-\$	23-Jan-15
532742	PAUSHAKLTD	22-Jan-15	520021	OMAXAUTO	23-Jan-15
500143	PHCAP	22-Jan-15	500314	ORIENTHOT	23-Jan-15
506590	PHILPCARB	22-Jan-15	500327	PILIND	23-Jan-15
532254	POLARIS	22-Jan-15	522257	RAJOOENG-\$	23-Jan-15
533274	PRESTIGE	22-Jan-15	532987	RBL	23-Jan-15
532661	RML	22-Jan-15	532983	RPGLIFE	23-Jan-15
502090	SAGCEM	22-Jan-15	511640	SANGHCO	23-Jan-15
507894	SCHABLON	22-Jan-15	501267	SHRERAN	23-Jan-15
538875	SELLWIN	22-Jan-15	523363	STERLINH	23-Jan-15
532725	SOLARINDS	22-Jan-15	506854	TANFACIND-\$	23-Jan-15
531548	SOMANYCERA	22-Jan-15	501242	TCIFINANCE	23-Jan-15
517166	SPELS	22-Jan-15	531846	TRINITYLEA	23-Jan-15

532538	ULTRACEMCO	23-Jan-15	523204	ABAN	28-Jan-15
511736	USHDI	23-Jan-15	532331	AJANTPHARM	28-Jan-15
533023	WABCOINDIA	23-Jan-15	506767	ALKYLAMINE	28-Jan-15
531340	BERVINL	24-Jan-15	531310	AVAILFC	28-Jan-15
532210	CUB	24-Jan-15	519105	AVTNPL	28-Jan-15
532329	DANLAW-\$	24-Jan-15	505688	BHARATGEAR	28-Jan-15
532345	GATI	24-Jan-15	532974	BIRLAMONEY-\$	28-Jan-15
531531	HATSUN	24-Jan-15	533108	BTTL	28-Jan-15
500236	KANELIND	24-Jan-15	526821	DAICHI-\$	28-Jan-15
532741	KIL	24-Jan-15	500840	EIHOTEL	28-Jan-15
533179	PERSISTENT	24-Jan-15	531162	EMAMILTD	28-Jan-15
526095	RALEGRA	24-Jan-15	500150	FOSECOIND	28-Jan-15
532029	SINDHUTRAD	24-Jan-15	531600	GOGIACAP	28-Jan-15
531169	SKPSEC	24-Jan-15	532482	GRANULES	28-Jan-15
511218	SRTRANSFIN	24-Jan-15	509546	GRAVISSHO	28-Jan-15
532301	TATACOFFEE	24-Jan-15	517354	HAVELLS	28-Jan-15
532432	UNITDSPR	24-Jan-15	523405	JMFINANCIL	28-Jan-15
505216	ALFREDHE	27-Jan-15	535648	JUSTDIAL	28-Jan-15
500008	AMARAJABAT	27-Jan-15	532926	JYOTHLAB	28-Jan-15
513729	AROGRANITE-\$	27-Jan-15	526179	LUDLOWJUT	28-Jan-15
522004	BATLIBOI-\$	27-Jan-15	521018	MARALOVER	28-Jan-15
512313	BIJLTEX	27-Jan-15	531319	MARUTISE	28-Jan-15
500110	CHENNPETRO	27-Jan-15	504882	NATIONSTD	28-Jan-15
511243	CHOLAFIN	27-Jan-15	500730	NOCIL	28-Jan-15
512445	DEVITRD	27-Jan-15	532481	NOIDATOLL	28-Jan-15
533208	EMAMIPAP	27-Jan-15	500331	PIDILITIND	28-Jan-15
531508	EVEREADY	27-Jan-15	590055	POLYSPIN	28-Jan-15
523113	FUTURSEC	27-Jan-15	512481	POLYTEX	28-Jan-15
500171	GHCL	27-Jan-15	512461	PUNCTRD	28-Jan-15
533150	GODREJPROP	27-Jan-15	500359	RANBAXY	28-Jan-15
500690	GSFC	27-Jan-15	532923	RJL	28-Jan-15
505982	HINDUJAF0-\$	27-Jan-15	501154	ROSEI	28-Jan-15
532822	IDEA	27-Jan-15	501061	SBBJ	28-Jan-15
512329	JARITEX	27-Jan-15	521194	SILINV	28-Jan-15
524731	JENBURPH	27-Jan-15	500420	TORNTPHARM	28-Jan-15
532652	KTKBANK	27-Jan-15	505583	WWTECHHOL	28-Jan-15
524103	LINEARPO	27-Jan-15	500710	AKZOINDIA	29-Jan-15
505320	LYNMC	27-Jan-15	500477	ASHOKLEY	29-Jan-15
532500	MARUTI	27-Jan-15	526187	ASHRAM	29-Jan-15
531209	NUCLEUS	27-Jan-15	500820	ASIANPAINT	29-Jan-15
512115	ROSEMER	27-Jan-15	513375	CARBORUNIV	29-Jan-15
512309	ROSETEX	27-Jan-15	521210	CITYMAN	29-Jan-15
532841	SAHYADRI	27-Jan-15	533309	DALMIABHA	29-Jan-15
516108	STHINPA	27-Jan-15	500124	DRREDDY	29-Jan-15
532812	TFL	27-Jan-15	500133	ESABINDIA	29-Jan-15
500114	TITAN	27-Jan-15	500135	ESSELPRO	29-Jan-15
532477	UNIONBANK	27-Jan-15	506803	FULFORD	29-Jan-15
524200	VINATIORGA	27-Jan-15	513108	GANDHITUBE-\$	29-Jan-15
524129	VINYLINDIA	27-Jan-15	531953	GCCL	29-Jan-15
505412	WENDT	27-Jan-15	531375	GCCLINP	29-Jan-15
512297	WHELTEX	27-Jan-15	530855	GDLEAS	29-Jan-15
501270	ZCHANAIN	27-Jan-15	531399	GGAUTO	29-Jan-15

531360	GOLECHA	29-Jan-15	524723	BIJHANS	30-Jan-15
506076	GRINDWELL	29-Jan-15	500059	BINANIIND	30-Jan-15
511441	GUJCRED	29-Jan-15	535620	BINNYMILLS	30-Jan-15
517372	GUJINTRX-\$	29-Jan-15	500069	BNKCAP	30-Jan-15
500185	HCC	29-Jan-15	517544	CENTUM	30-Jan-15
500010	HDFC	29-Jan-15	500147	CMIFPE-\$	30-Jan-15
523398	HITACHIHOM	29-Jan-15	504340	CONFINT	30-Jan-15
532835	ICRA	29-Jan-15	506935	CONTCHM	30-Jan-15
532659	IDFC	29-Jan-15	531067	CONTILI	30-Jan-15
532150	INDRAMEDCO	29-Jan-15	526269	CRSTCHM	30-Jan-15
511208	IVC	29-Jan-15	500096	DABUR	30-Jan-15
523592	JENSONICOL	29-Jan-15	500097	DALMIASUG	30-Jan-15
590003	KARURVYSYA	29-Jan-15	532927	ECLERX	30-Jan-15
500245	KIRLFER	29-Jan-15	503681	ELCIDIN	30-Jan-15
523207	KOKUYOCLN	29-Jan-15	504387	ELFTRDG	30-Jan-15
523323	KOVAI	29-Jan-15	517477	ELNET-\$	30-Jan-15
530139	KREONFIN	29-Jan-15	526574	ENTRINT	30-Jan-15
507912	LKPFIN	29-Jan-15	514060	EVERTEX	30-Jan-15
516062	NATPLY	29-Jan-15	500650	EXCELINDUS	30-Jan-15
500313	OILCOUNTUB	29-Jan-15	531754	FINCOM	30-Jan-15
531539	RISHDIGA-\$	29-Jan-15	505714	GABRIEL	30-Jan-15
532699	ROHLTD	29-Jan-15	502856	GNDHISP	30-Jan-15
531324	ROSELABS	29-Jan-15	500670	GNFC	30-Jan-15
509423	SEL	29-Jan-15	513343	GRANDFONRY	30-Jan-15
532498	SHRIRAMCIT	29-Jan-15	532015	GRAVITY-\$	30-Jan-15
533228	SKSMICRO	29-Jan-15	530469	GSLSEC	30-Jan-15
505827	SNL	29-Jan-15	530141	GYANDEV	30-Jan-15
500295	SSLT	29-Jan-15	532281	HCLTECH	30-Jan-15
530883	SUCROSA	29-Jan-15	519552	HERITGFOOD	30-Jan-15
500407	SWARAJENG	29-Jan-15	500189	HINDUJAVEN	30-Jan-15
532390	TAJGVK	29-Jan-15	532174	ICICIBANK	30-Jan-15
521228	TATIAGLOB	29-Jan-15	532100	INDOCITY-\$	30-Jan-15
532349	TCI	29-Jan-15	532612	INDOCO	30-Jan-15
533393	TCIDEVELOP	29-Jan-15	505358	INTEGRAEN	30-Jan-15
531652	THIRDFIN	29-Jan-15	538835	INTELLECT	30-Jan-15
511559	TIMESGTY	29-Jan-15	506161	ISHWATR	30-Jan-15
500414	TIMEX-\$	29-Jan-15	509715	JAYSHREETA	30-Jan-15
524717	TITANBIO	29-Jan-15	500228	JSWSTEEL	30-Jan-15
500251	TRENT	29-Jan-15	500165	KANSAINER	30-Jan-15
532371	TTML	29-Jan-15	505890	KENNAMET	30-Jan-15
512117	TWIROST	29-Jan-15	531692	KHYATI	30-Jan-15
532156	VAIBHAVGBL	29-Jan-15	532352	KIRLMU	30-Jan-15
512511	VARUNME	29-Jan-15	500241	KIRLOSBROS	30-Jan-15
501370	WALCHPF	29-Jan-15	502150	KLYNCEM	30-Jan-15
511601	YASHMGM	29-Jan-15	511138	KOTHARIFIN	30-Jan-15
512587	ZODJRD MJ	29-Jan-15	500250	LGBBROSLTD	30-Jan-15
503893	ZSATYASL	29-Jan-15	533007	LGBFORGE	30-Jan-15
521097	AMARJOTHI	30-Jan-15	517449	MAGNAELQ-\$	30-Jan-15
532134	BANKBARODA	30-Jan-15	532313	MAHLIFE	30-Jan-15
524687	BASANTGL-\$	30-Jan-15	526891	MKTCREAT	30-Jan-15
509480	BERGEPAIN	30-Jan-15	509196	MMRUBBR-B	30-Jan-15
511698	BHAGYFN	30-Jan-15	509760	MODRNSH	30-Jan-15

524084	MONSANTO	30-Jan-15	530789	CEEJAY	31-Jan-15
531049	NEELKAN	30-Jan-15	538786	CIL	31-Jan-15
500452	NEPCAGRO	30-Jan-15	531210	COLINZ	31-Jan-15
500301	NEPCMICON	30-Jan-15	521216	DHANROTO	31-Jan-15
531077	NEPCPAPER	30-Jan-15	503796	DIGJAM	31-Jan-15
521192	NEPCTEX	30-Jan-15	531533	ECOM	31-Jan-15
524558	NEULANLAB	30-Jan-15	500086	EXIDEIND	31-Jan-15
523209	NICCOUCO	30-Jan-15	530705	FLORATX	31-Jan-15
512103	NIDHGRN	30-Jan-15	531608	GORANIN	31-Jan-15
521009	NIWASSP	30-Jan-15	500300	GRASIM	31-Jan-15
514460	OSWAYRN	30-Jan-15	538838	ICL	31-Jan-15
511702	PARSHINV	30-Jan-15	531672	INANISEC	31-Jan-15
530253	RAJTUBE	30-Jan-15	530405	JINDCAP	31-Jan-15
530271	RICHUNV	30-Jan-15	530915	JRFOODS	31-Jan-15
504365	RIDHISYN	30-Jan-15	514448	JYOTIRES	31-Jan-15
530917	RRSECUR	30-Jan-15	533297	KBIL	31-Jan-15
511403	SAJEEV	30-Jan-15	508993	KEDIACN	31-Jan-15
515043	SAINTGOBAIN	30-Jan-15	500243	KIRLOSIND	31-Jan-15
531893	SAWABUSI	30-Jan-15	532732	KKCL	31-Jan-15
532638	SHOPERSTOP	30-Jan-15	530243	MANGASOF	31-Jan-15
503696	SHRENTI	30-Jan-15	531221	MAYURFL	31-Jan-15
523790	SHUKJEW	30-Jan-15	526251	MIDEASTP	31-Jan-15
531219	SHYAMAINFO	30-Jan-15	505594	MULTIIN	31-Jan-15
530439	SIDDHA	30-Jan-15	531272	NIKKIGL	31-Jan-15
500550	SIEMENS	30-Jan-15	508875	NITINALOY	31-Jan-15
531506	SKRABUL	30-Jan-15	530669	PRESOFI	31-Jan-15
512014	SOBME	30-Jan-15	526009	PROCAL	31-Jan-15
532872	SPARC	30-Jan-15	520073	RAUNQAQU	31-Jan-15
514442	SRIKPRIND	30-Jan-15	532527	RKFORGE	31-Jan-15
501110	SUNRINV	30-Jan-15	519397	SHINDL	31-Jan-15
532733	SUNTV	30-Jan-15	522152	SOLIMAC	31-Jan-15
511447	SYLPH	30-Jan-15	524667	SOTL	31-Jan-15
500800	TATAGLOBAL	30-Jan-15	513488	SSWRL	31-Jan-15
532755	TECHM	30-Jan-15	538876	STSERV	31-Jan-15
517407	TOYAMAQ-Ş	30-Jan-15	505685	TAPARIA	31-Jan-15
530783	TRANSASIA	30-Jan-15	524204	TEEAI	31-Jan-15
504273	TUMUSEL	30-Jan-15	531814	TIRSARJ	31-Jan-15
511096	TVOLCON	30-Jan-15	532779	TORNTPOWER	31-Jan-15
524038	VENLONENT	30-Jan-15	531279	TRISHAKT	31-Jan-15
530401	VINYOFL	30-Jan-15	524408	UNIVSTAR	31-Jan-15
500238	WHIRLPOOL	30-Jan-15	531762	UNJHAFOR	31-Jan-15
590013	XPROINDIA	30-Jan-15	538873	WINYCOMM	31-Jan-15
512345	YASTF	30-Jan-15	520119	ASAL	02-Feb-15
533287	ZEELEARN	30-Jan-15	511742	CHOKSEC	02-Feb-15
509046	ZLEENCON	30-Jan-15	523708	EIMCOELECO	02-Feb-15
512008	AMANITRA	31-Jan-15	511676	GICHSGFIN	02-Feb-15
531519	ANKUSHFI	31-Jan-15	522289	IFMIMPX	02-Feb-15
526125	ARHNTTO	31-Jan-15	532054	KDDL-Ş	02-Feb-15
512038	ASWTR	31-Jan-15	500252	LAXMIMACH	02-Feb-15
502216	BOMBPOT	31-Jan-15	532915	RELIGARE	02-Feb-15
531203	BRANDREAL	31-Jan-15	509845	RJSHAH	02-Feb-15
507486	CAPRO	31-Jan-15	517168	SUBROS	02-Feb-15



512527	SUPER-\$	02-Feb-15	504258	LAKSELEC	05-Feb-15
532368	YBRANTDIGI	02-Feb-15	524709	NAGAAGRI	05-Feb-15
500410	ACC	03-Feb-15	535755	PFRL	05-Feb-15
500825	BRITANNIA	03-Feb-15	500260	RAMCOCEM	05-Feb-15
500645	DEEPAKFERT	03-Feb-15	532513	TVSELECT	05-Feb-15
505700	ELECON	03-Feb-15	530973	ALFAICA	06-Feb-15
530835	ELTROL	03-Feb-15	531179	ARMANFIN	06-Feb-15
500676	GSKCONS	03-Feb-15	532834	CAMLINFIN	06-Feb-15
500182	HEROMOTOCO	03-Feb-15	500085	CHAMBLFERT	06-Feb-15
531968	IITLPROJ	03-Feb-15	590084	KANCOENT	06-Feb-15
533047	IMFA	03-Feb-15	521242	KANDAGIRI-\$	06-Feb-15
504741	INDIANHUME	03-Feb-15	517344	MINDTECK	06-Feb-15
500257	LUPIN	03-Feb-15	532460	PONNIERODE	06-Feb-15
531528	MAARSOFTW	03-Feb-15	531412	RADIXIND	06-Feb-15
532641	NDL	03-Feb-15	521240	SAMBANDAM-\$	06-Feb-15
506532	NITTAGELA-\$	03-Feb-15	503804	SHRIDINE-\$	06-Feb-15
502420	ORIENTPPR	03-Feb-15	505192	SMLISUZU	06-Feb-15
532810	PFC	03-Feb-15	508963	STRLGUA	06-Feb-15
500387	SHREECEM	03-Feb-15	500770	TATACHEM	06-Feb-15
505650	SKYLMILAR	03-Feb-15	530199	THEMISMED	06-Feb-15
590072	SUNDRMBRAK	03-Feb-15	530803	BHAGERIA	07-Feb-15
534369	TBZ	03-Feb-15	530307	CHAMANSEQ-\$	07-Feb-15
522113	TIMKEN	03-Feb-15	531599	FDC	07-Feb-15
506687	TRANSPEK-\$	03-Feb-15	517300	GIPCL	07-Feb-15
532343	TVSMOTOR	03-Feb-15	532644	JKCEMENT	07-Feb-15
530889	ALKA	04-Feb-15	521127	KHTRFIB	07-Feb-15
532047	ASIANFILMS	04-Feb-15	526947	LAOPALA	07-Feb-15
500040	CENTURYTEX	04-Feb-15	502450	SESHAPAPER	07-Feb-15
521056	CHESLINTEX	04-Feb-15	516030	YASHPPR-\$	07-Feb-15
522261	DOLPHINOFF-\$	04-Feb-15	530233	AUROLAB	09-Feb-15
508486	HAWKINCOOK	04-Feb-15	531278	AXISCAP	09-Feb-15
501295	IITL	04-Feb-15	523248	MACPLASQ-\$	09-Feb-15
512237	JAICORPLTD	04-Feb-15	500307	NIRLON	09-Feb-15
506943	JBCHEPHARM	04-Feb-15	531944	SERVOTEC	09-Feb-15
507779	KANPRPLA	04-Feb-15	522267	VJLAXMIE-\$	09-Feb-15
524000	MAGMA	04-Feb-15	500002	ABB	10-Feb-15
506261	MODISNME-\$	04-Feb-15	526331	ADVMULT	10-Feb-15
523630	NFL	04-Feb-15	506947	ADVPETR-B	10-Feb-15
500672	NOVARTIND	04-Feb-15	534804	CARERATING	10-Feb-15
506579	ORIENTCQ-\$	04-Feb-15	504671	CHASBRT	10-Feb-15
520056	SUNCLAYLTD	04-Feb-15	523736	DPL	10-Feb-15
500403	SUNDRMFAST	04-Feb-15	513059	GSAUTO	10-Feb-15
500400	TATAPOWER	04-Feb-15	536868	INTELSOFT	10-Feb-15
533158	THANGAMAYL	04-Feb-15	517334	MOTHERSUMI	10-Feb-15
519224	WILLAMAGOR	04-Feb-15	526721	NICCOPAR-\$	10-Feb-15
519214	WILLIMFI	04-Feb-15	526801	PSL	10-Feb-15
513117	AMFORG	05-Feb-15	512099	PUNITCO	10-Feb-15
531878	ANJANIFIN	05-Feb-15	517496	RICOHQ	10-Feb-15
530429	ASHISHPO	05-Feb-15	530035	SANTOSHF	10-Feb-15
530885	AURUMSOFT	05-Feb-15	511185	SURYAKR	10-Feb-15
531719	BHAGCHEM	05-Feb-15	531091	UNITDCR	10-Feb-15
532173	CYBERTECH	05-Feb-15	500780	ZUARIGLOB	10-Feb-15
532424	GODREJCP	05-Feb-15	526851	AREXMIS	11-Feb-15
507598	KLRF	05-Feb-15	519174	ASHAI	11-Feb-15

506820	ASTRAZEN	11-Feb-15	534757	FOCUSIRL	13-Feb-15
500043	BATAINDIA	11-Feb-15	531196	GAGANPO	13-Feb-15
531237	DHRUVCA	11-Feb-15	521176	GANGOTRI	13-Feb-15
500164	GODREJIND	11-Feb-15	531479	GLOBAL	13-Feb-15
530557	NCLRESE	11-Feb-15	531737	GREENCREST	13-Feb-15
520151	SHREYAS	11-Feb-15	511543	GSBFIN	13-Feb-15
512153	SPECMKT	11-Feb-15	531918	HINDAPL	13-Feb-15
509038	VOLLF	11-Feb-15	517044	IDM	13-Feb-15
530799	ANNAINFRA	12-Feb-15	500202	INDLEASE	13-Feb-15
500031	BAJAJELEC	12-Feb-15	504840	KAIRA	13-Feb-15
508939	BLCISER	12-Feb-15	504269	KHAITANELE	13-Feb-15
530779	DYNAMICP	12-Feb-15	523652	KPLASTIK	13-Feb-15
531463	GBLINFRA	12-Feb-15	531288	LEADFIN	13-Feb-15
505250	GGDANDE	12-Feb-15	506113	LIFELINE	13-Feb-15
507815	GILLETTE	12-Feb-15	532537	LUMAXAUTO	13-Feb-15
526931	HRYNSHP-\$	12-Feb-15	500520	M&M	13-Feb-15
532001	INDCTST	12-Feb-15	514456	METROOV	13-Feb-15
538422	JACKSON	12-Feb-15	532164	MINOLTAF	13-Feb-15
526558	JAMEHOT	12-Feb-15	501343	MOTOGENFIN	13-Feb-15
511092	JMDTELEFILM	12-Feb-15	526299	MPHASIS	13-Feb-15
535730	KHOOBSURAT	12-Feb-15	534184	NAGAROIL	13-Feb-15
531689	MAHAREM	12-Feb-15	514332	NEOINFRA	13-Feb-15
530897	NGIND-\$	12-Feb-15	511714	NIMBSPROJ	13-Feb-15
511632	OLYMTFI	12-Feb-15	514324	OMNITEX	13-Feb-15
535658	PAWANSUT	12-Feb-15	535514	PRIMECAPM	13-Feb-15
500459	PGHH	12-Feb-15	515127	RAMMA	13-Feb-15
523236	SHRENUJ	12-Feb-15	531583	RAP	13-Feb-15
526901	SONALAD	12-Feb-15	531033	REGAL	13-Feb-15
526161	SPENTA	12-Feb-15	507952	SHIKHARLETR	13-Feb-15
526827	SPICEISL-\$	12-Feb-15	506655	SUDARSCHEM	13-Feb-15
526941	VAICC	12-Feb-15	531411	TUNITEX	13-Feb-15
526775	VALIANT-\$	12-Feb-15	531831	UNISH	13-Feb-15
515099	VERTICLIND	12-Feb-15	511690	WARNER	13-Feb-15
511122	1STCUS	13-Feb-15	509910	ZSOUTGAS	13-Feb-15
521174	ARORAFIB	13-Feb-15	533144	COX&KINGS	14-Feb-15
517203	BEELE	13-Feb-15	526073	GALXBRG	14-Feb-15
519500	BKV	13-Feb-15	532133	IFGLREFRAC	14-Feb-15
532324	CINEVISTA	13-Feb-15	509040	NETLINK	14-Feb-15
512213	CLASELE	13-Feb-15	530125	SAMRATPH-\$	14-Feb-15
530859	COSBOARD	13-Feb-15	526532	SFPIL	14-Feb-15
505678	CPECLTD	13-Feb-15	512221	TARCF	14-Feb-15
530171	DAULAT	13-Feb-15	500425	AMBUJACEM	18-Feb-15
535486	DELTAITD	13-Feb-15	500166	GOODRICKE	28-Feb-15
531252	FARRYIND	13-Feb-15			

**Consensus Estimate Q3FY15**

BSE Code	NSE Code	Sales ( Cr.)	Sales Growth(%)	PAT( Cr.)	PAT Growth (%)
500049	BEL	1409.7	198.40	197.7	17.30
532538	ULTRACEMCO	5713.2	997.10	411.9	19.40
500830	COLPAL	1021	183.90	137.5	15.50
500696	HINDUNILVR	8111.8	1411.50	1058.8	12.30
500875	ITC	9774.1	3772.80	2802.5	12.00
532432	MCDOWELL-N	2437.9	243.80	108.5	7.00
532523	BIOCON	768.7	178.30	107.8	9.80
532839	DISHTV	713.6	181.20	-0.2	14.40
505537	ZEEL	1239.7	398.20	293.4	4.30
500188	HINDZINC	4078.4	2234.10	2366	18.20
506395	COROMANDEL	3067.6	248.50	124.9	11.30
532777	NAUKRI	154.2	51.30	51.4	25.00
532792	CAIRN	3223	1952.40	1433.2	(35.50)
533274	PRESTIGE	630.5	167.10	103.2	46.50
532400	KPIT	768.4	109.60	67.1	13.40
532819	MINDTREE	916.4	184.50	142.5	15.90
533179	PERSISTENT	495.8	117.60	74.8	14.60
531807	INGVYSYABK	512.3	338.20	185	23.10
500247	KOTAKBANK	1076.7	743.60	459.4	18.00
535789	IBULHSGFIN	572.3	602.30	457.7	(1.30)
511218	SRTRANSFIN	1042.6	789.60	336.3	11.90

**Result Q3FY15**

BSE Code	NSE Code	Sales ( Cr.)	Sales Growth(%)	PAT( Cr.)	PAT Growth (%)
TCS	532540	24501	15.10	5444	2.10
PFS	533344	195.23	64.20	54.8	(48.74)
ANTFRIBEAR	505665	38.66	28.20	0.9369	76.77
SRK	531307	1.49	(82.00)	0.29	(9.38)
PMCFIN	534060	3.78	56.20	0.514	42.78
DHFL	511072	1526.3	17.30	159.66	15.37
BAJAJTEMPO	500033	511.92	6.80	9.99	219.35
INOXLEISUR	532706	227.226	20.30	11.83	82.84
NIITLTD	500304	117	2.20	-17.06	(13.36)
RSSOFTWARE	517447	95.06	8.70	17.01	27.04
WIPRO	507685	12085.1	20.60	2203.1	6.78
VGUARD	532953	395.53	12.10	9.23	(47.35)
RELIANCE	500325	93528	(20.80)	5256	(4.50)
JAYBARMARU	520066	303.5	(0.10)	10.95	44.46
RIIL	523445	22.71	8.90	5.32	(12.64)
TANLA	532790	31.59	456.20	0.2	(28.60)
AXISBANK	532215	3589	20.27	1899	18.39



## Narnolia Securities Ltd

124, 1st floor 7/ 1, Lords Sinha Road Kolkata 700071, Ph 033-22821251 Toll Free no : 1-800-345-4000

email: [research@narnolia.com](mailto:research@narnolia.com),

website : [www.narnolia.com](http://www.narnolia.com)

**Risk Disclosure & Disclaimer:** This report/message is for the personal information of the authorized recipient and does not construe to be any investment, legal or taxation advice to you. Narnolia Securities Ltd. (Hereinafter referred as NSL) is not soliciting any action based upon it. This report/message is not for public distribution and has been furnished to you solely for your information and should not be reproduced or redistributed to any other person in any form. The report/message is based upon publicly available information, findings of our research wing "East wind" & information that we consider reliable, but we do not represent that it is accurate or complete and we do not provide any express or implied warranty of any kind, and also these are subject to change without notice. The recipients of this report should rely on their own investigations, should use their own judgment for taking any investment decisions keeping in mind that past performance is not necessarily a guide to future performance & that the the value of any investment or income are subject to market and other risks. Further it will be safe to assume that NSL and /or its Group or associate Companies, their Directors, affiliates and/or employees may have interests/ positions, financial or otherwise, individually or otherwise in the recommended/mentioned securities/mutual funds/ model funds and other investment products which may be added or disposed including & other mentioned in this report/message.