

SGX NIFTY : 8435 (19 Pt Down)

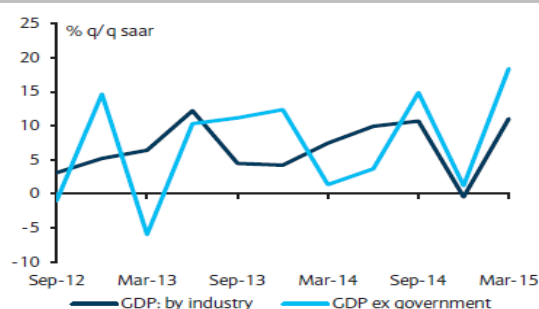
Quote of the Day

"The primary test of managerial economic performance is the achievement of a high earnings rate on equity capital employed (without undue leverage, accounting gimmickry, etc.) and not the achievement of consistent gains in earnings per share."

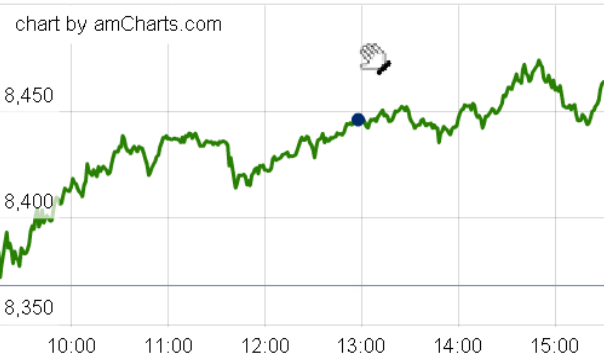
Warren Buffett

Chart of the Day

GDP Trend



Index Action Nifty (1th July 15)



Index

Contents	Page	Coverage
News	2	Update
Economic Calendar	3	Update

Market

Name	Value	Change
Sensex	28,020.87	240.04
Nifty	8453.05	84.55
DOW	17,751.91	138.50
NASDAQ	5,013.12	26.25
CAC	4,883.13	92.99
DAX	11,180.50	235.53
FTSE	6,608.59	87.61
NIKKEI	20,573.08	243.76
HANG SENG	26,219.60	(30.34)
EW ALL SHARE	14315.55	121.68

Instituional Turnover

FII

Investor	Buy(Cr.)	Sale(Cr.)	Net(Cr.)
1th July,15	4397.59	4322.56	75.03
July,15	44426.48	49651.85	(5225.37)
2015	505229.41	479178.16	26254.99

DII

Investor	Buy(Cr.)	Sale(Cr.)	Net(Cr.)
1th July,15	1345.73	1293.61	52.12
July,15	1345.73	1293.61	52.12
2015	188078.71	173093.14	14985.57

Commodity Price

Commodity/Currencies	Value	
GOLD	26414.00	↓
SILVER	35395.00	↓
CRUDEOIL	57.04	↑
COPPER	373.80	↑
NATURALGAS	177.50	↓
DOLLAR/RS.	63.61	↑
EURO/RS.	70.26	↑
POUND/RS.	99.21	↑

Market Snapshot

Top Price Performers

Top Performers 1D	% Change	Top Performers 1W	% Change	Top Performers 1M	% Change
MEDIAONE	20.00	JMTAUTOLD	75.36	MIC	103.57
MBECL	19.97	AADHAARVEN	58.33	WINSOMEDJ	93.55
NITCO	19.96	NITCO	49.86	IOLCP	73.54
ROLATAN	19.95	KAVVERITEL	47.00	AADHAARVEN	72.73
GOKEX	19.91	MIC	36.84	NEXTMEDIA	70.37

Worst Price Performers

Worst Performers 1D	% Change	Worst Performers 1W	% Change	Worst Performers 1M	% Change
GLOBALCA	(14.80)	CHIRAWA	(31.67)	RAJTV	(61.76)
EMPEESUG	(12.53)	XLENERGY	(22.34)	CHIRAWA	(58.07)
RESTILE	(10.14)	3IINFOTECH	(22.32)	NAKODATEX	(51.39)
ISIBARS	(9.60)	SANCIA	(19.05)	VTCIND	(44.03)
KAVVERITEL	(7.20)	FARMAXIND	(16.00)	RAMSARUP	(40.49)

Top News

• **VGuard Mgt Guideline** : V-Guard is targeting a revenue growth of 15 percent on the back of reduced copper prices, lower inventory and working capital loans this fiscal.

V-Guard says the company will maintain single price policy across India for the cables and wires division.

The company expects to sell Rs 60 crore worth of Pebble brand water heaters and a 15-20 percent growth in the pumps business this year .

V-Guard hopes that bulk of the growth for FY16 will come the second half of FY16 onwards with the launch of its new products and premier range of water heaters in some parts of India .

• **Petronet LNG Mgt Guideline** : Petronet LNG has seen improvement in offtake in the current quarter due to soft LNG prices and positive government steps.

Petronet LNG said Dahej and Kochi terminals need to improve its operating capacity to see uptick in volumes.

The Dahej expansion is expected to be completed by this year end. Sixty percent of work is already finished. However, the Kochi project will take more time,

Kochi the main issue that we are facing is connectivity with the major consuming sector, which was supposed to be in place when our plants got ready last year. There have been issues with laying the pipeline, the company is using Kochi for storing energy and reloading services to mitigate its losses. Garg said the new terminals will take atleast three years to become functional, but the offtake will improve with low low LNG prices, which are favorable for the consumers.

• **Kitex Garments Mgt Guideline** : Company is aiming for revenues between Rs 600 to Rs 650 crore for this fiscal.

Kitex Garments says any further interest rate subsidy on exports will boost the company's business and increase profitability

The current debt for the company stands at Rs 300 crore

• **Zydus Group announced** receipt of approval to sell chronic pain reliever morphine sulfate tablets from the US Food and Drug Administration (USFDA). The product used in treatment of chronic pain or cancer related pain will be manufactured at Neshor Pharmaceuticals (USA) LLC, located at St Louis .

• **Lakshmi Vilas Bank Mgt Guideline** : Bank the bank has a growth target of 23 percent In the current year and added that pipeline proposals and investments will lead growth from the second quarter onwards.

the bank had restructured and reduced its deposit rate between 10 to 25 bps in different segments to reduce its cost of funds.

Lakshmi Vilas Bank passed on lower rate benefits to customers by cutting its base rate by 25 bps on Tuesday, effective July 1.

• **Maruti Jun 2015 Auto sales No** : +1.8% (YoY) , -0.1% (YoY) .
TVS Motors Jun 2015 Auto sales No : 9.9% (YoY) , +0.9% (YOY) .
TATAMOTORS Jun 2015 Auto sales No : +6.0 % (YoY) , +3.5 % (YoY) .
ASHOKLEY Jun 2015 Auto sales No : +40.4 % (YoY) , +12.5 % (YoY) .
HEROMOTO Jun 2015 Auto sales No : +0.1 % (YoY) , -4.8 % (YoY) .

• **Australian Building Approvals** rose to a seasonally adjusted 2.4%, from -5.2% in the preceding week whose figure was revised down from -4.4%.

• **Chinese Manufacturing PMI** remained unchanged at an annual rate of 50.2, from 50.2 in the preceding month. Analysts had expected Chinese Manufacturing PMI to rise to 50.3 last month.

• **Tankan Manufacturing index** rose to a seasonally adjusted 15, from 12 in the preceding quarter. Analysts had expected Tankan Manufacturing index to remain unchanged at 12 in the last quarter

• **U.S. API Weekly Crude Stock** rose to 1.900M, from -3.200M in the preceding week. Analysts had expected U.S. API Weekly Crude Stock to fall -1.300M last week.

• **South Korean CPI** rose to a seasonally adjusted annual rate of 0.7%, from 0.5% in the preceding month . Analysts had expected South Korean CPI to rise to 0.7% last month.

Country	Monday 29 June 15	Tuesday 30 June 15	Wednesday 1 July 15	Thursday 2 July 15	Friday 3 July 15
US	CB Consumer Confidence , Chicago PMI .	Chicago PMI , S&P/CS Composite- 20 HPI y/y ,	ADP Non-Farm Employment Change , ISM Manufacturing PMI , Crude Oil Inventories .	Non-Farm Employment Change , Unemployment Rate , Average Hourly Earnings m/m , Unemployment Claims .	Bank Holiday
UK/EURO ZONE	German Retail Sales m/m , Current Account , Final GDP q/q , Eurogroup Meetings , GDP m/m .	German Retail Sales m/m , CPI Flash Estimate y/y , Core CPI Flash Estimate y/y , Unemployment Rate , Eurogroup Meetings .	German Final Manufacturing PMI , Spanish Manufacturing PMI , Manufacturing PMI , BOE Financial Stability Report .	Spanish Unemployment Change , Halifax HPI m/m , Construction PMI , ECB Monetary Policy Meeting Accounts ,	Spanish Services PMI , Services PMI , Retail Sales m/m .
INDIA			Auto No & HSBC Manufacturing PMI No	Auto No	

Narnolia Securities Ltd.

Narnolia Research Lab

Stellar IT Park | 5th Floor | Office Space No. 6 | Tower-II Ind Plot No. C-25 |
Sector-62 | Noida | Ph : 0120-4215110

Central Strategy Desk - Kolkata

124 | 1st Floor | 7/1 Lords Sinha Road | Kolkata - 71
Ph : 033-22821500 | M : 93347 14418, 98302 69810