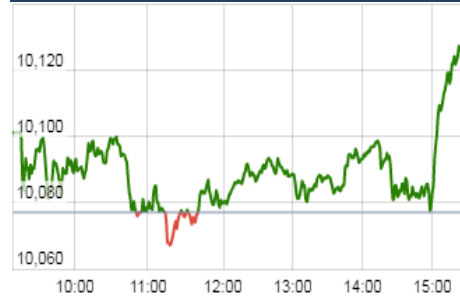


### KEY LEVELS

Support 1 : 9838  
Support 2: 9782

Resistance : 10115  
Resistance 2: 10230

### Nifty Intraday Chart



### Market Outlook

After opening on a subdued note, Nifty traded in the band of 10066 and 10104 maximum hours of yesterday's trading session. However some buying interest was witnessed towards the closing session and the index rose to make an intraday high of 10128.35. At the end of the day Nifty closed at 10114.65. It had net gain of 0.37% over the previous trading day's close. The midcap and small cap indices underperformed the benchmark index and closed the day in red.

On the sectoral front, some buying interest was witnessed in Auto and metal stocks while PSU banking stocks have shown some weakness. The breadth of the market was negative and about three shares declined as against two shares advanced at NSE.

Nifty derivative range as suggested by structure of open interest at different strike price suggests 9800-10000 for remaining days of July series. Initial range suggested for August series is 9700-10000. Also at the money strangle premium for August series is Rs 267 much higher than how July series has started and this implies market participants assumes some volatility in August series. After correcting sharply in May, Nifty Small Cap Index made a new high on Friday suggesting sharp stock specific move will continue.

Among international development - Venezuela's sovereign debt saw sharp decline last week amid talk of US sanction ahead of Venezuela's president announcing to re-write its constitutions. Venezuela's GDP has already shrunk by about 32% since 2014 as it is dependent mostly on oil export. Any further negative development here could see higher volatility in commodity market across globe.

### Market

| Market                          | Value     | % Change |
|---------------------------------|-----------|----------|
| <b>Morning Traded Market</b>    |           |          |
| SGX NIFTY                       | 10,143.00 | -0.14%   |
| NIKKIE                          | 20068.66  | 0.41%    |
| HANG SENG                       | 27,658.00 | 0.43%    |
| <b>Yesterday Closing Market</b> |           |          |
| Sensex                          | 32,575.17 | 0.19%    |
| Nifty                           | 10,114.65 | 0.37%    |
| DOW                             | 21,963.92 | 0.33%    |
| NASDAQ                          | 6,362.94  | 0.23%    |
| CAC                             | 5,127.03  | 0.65%    |
| DAX                             | 12,251.29 | 1.09%    |
| FTSE                            | 7,423.66  | 0.70%    |
| EW ALL SHARE                    | 18,187.00 | 0.15%    |

% Change in 1 day

### Commodity Price ( Yesterday Closing )

| Commodity/Currency | Value    | % Change |
|--------------------|----------|----------|
| GOLD               | 28404.00 | -0.54%   |
| SILVER             | 38512.00 | -0.34%   |
| CRUDEOIL           | 51.33    | -0.87%   |
| NATURALGAS         | 181.20   | -1.51%   |
| DOLLAR/RS.         | 64.08    | -0.17%   |
| EURO/RS.           | 75.71    | -0.03%   |
| POUND/RS.          | 84.63    | -0.02%   |

% Change in 1 day

### Institutional Turnover

| FII      |          |           |          |
|----------|----------|-----------|----------|
| Investor | Buy(Cr.) | Sale(Cr.) | Net(Cr.) |
| 1-Aug-17 | 4516     | 5461      | (946)    |
| Aug-17   | 4516     | 5461      | (946)    |
| 2017     | 758268   | 735395    | 22873    |
| DII      |          |           |          |
| Investor | Buy(Cr.) | Sale(Cr.) | Net(Cr.) |
| 1-Aug-17 | 4313     | 2923      | 1391     |
| Aug-17   | 4313     | 2923      | 1391     |
| 2017     | 441672   | 415104    | 26568    |

### Event Today Today Result

BATAINDIA , EDELWEISS , EMAMILTD  
ENIL , GODREJPROP , GREENPLY  
HAWKINCOOK , HEG , KEC , LUPIN  
MAGMA , MHRIL , PNB , RELINFRA  
TBZ , UCOBANK , VOLTAS , VSTIND  
WOCKPHARMA , ZFSTEERING

### Concall

ShriCity Union : 10:00 AM  
Greenply : 3:30 PM  
DCM Shriram Ltd : 4:00 PM,  
Den Networks : 4:30 PM  
KEC Intl : 5:00 PM  
Marico : 5:00 PM  
PNB : 5:30 PM

### Dividend

AGEISLOG : Rs 0.35/- , AMBUJACEM : Rs 1.60/  
ASAHIINDIA : Rs 1.0/- , AVTNPL : Rs 0.2/-,  
BOROSIL : Rs 25.0/-, BRIGHTBR : Rs 2/- ,  
CAPITALT : Rs 1.50/-, CREST : Rs 0.50/-  
FOMEHOT : Rs 1/- , GESHIP : Rs 6.5/-  
GODREJIND : Rs 1.75/-, GPPL : Rs 1.80/-  
GRPLTD : Rs 10/- , GSKCONS : Rs 70/-  
HIKAL : Rs 0.60/- , IBULHSGFIN : Rs 9/-  
INEOSSTYRO : Rs 4/-, KAIRA : Rs 5/-  
LEHIL : Rs 0.50/- , NBVENTURES : Rs 1/-  
NESTLEIND : Rs 15/- , PAGEIND : Rs 25/-  
PANAENERG : Rs 5.5/- , PRAJIND : Rs 1.62/-  
SHK : Rs 1.75/- , ULTRAMAR : Rs 4/-  
ZODIACLOTH : Rs 1/-  
( Exdate : 2.8.2017)

**Quote of the Day** : -" It's better to hang out with people better than you. Pick out associates whose behavior is better than yours and you'll drift in that direction."

**Warren Buffett**

**GODREJCP****"HOLD"****2nd Aug 2017**

GODREJCP's result for Q1FY18 was below than our expectations, margins remain dampener, main positive remain African and Europe business which grew 26% and 24% YoY respectively in Constant currency (cc) terms. Domestic soap business showed encouraging growth of 7% YoY in this quarter. Indonesian business de grew by11% in cc term, witnessing sharp competitive intensity. Management expects improvement in Indonesian business Q3FY18 onwards. Going forward we expect domestic volume to recover considering restocking by channel partners while expect headwind to continue for Indonesian business for little longer although new team in place may lead sharper recovery. GODREJCP remained one of best stock in our horizon, considering strong pipeline of new product launches, entry in professional hair product segment and efforts regarding rejuvenating Indonesian business, we maintain our 'Hold' rating on it. The company is presently trading at 37 times of FY19 expected EPS and 10 times of FY19 book value.

**Cochin Shipyard Ltd : IPO****"SUBSCRIBE"****1st Aug 2017**

CSL is one of the largest public sector shipyards in India in terms of dock capacity and serves both defense and non-defense space. It has strong shipbuilding order book of INR29 bn and Ship repair order book of 3.7bn. The company derives 74% revenues from Ship Building while 25% revenues from Ship repair activity. The management is currently focusing towards getting more order from Ship repair side as it a relatively higher margin business. The company's strategic location west coast of India (main sea route connecting Europe, West Asia and the Pacific Rim) makes the company a preferred supplier to many. The company is being offered at 1.75times FY18E BV post IPO which makes it attractive for investment. We recommend long term investors may "SUBSCRIBE"

\*For details, refer to our daily report- *India Equity Analytics***Top News****BALRAMCHIN CONCALL HIGHLIGHTS (1QFY18)**

- # High sugarcane production this quater due to Maharsatra and UP.
- # Interim dividend @2.50 rupees per equity share of 1 rupees for FY18.
- # Ethnol volume target is 9 crore litre.
- # Cogeneration volume will also be increased because of increase in sugarcane crushed this quater.
- # Import duty will be increased to 40-50%.
- # % increase in early variety is 40-60% in FY18.
- # Sugar realization is improved to 36.65 rupees per kg as compared to 1QFY17.
- # Distillery sales is 108 crore and PBIT is 34 crores due to withdrawal of excise duty and downward revision of supply price of Ethanol to 39 rupees per BL.
- # Average realizations for Q1FY18 is 4.80 rupees per unit as compared 4.73 rupees per unit during Q1FY17.
- # Interest is 26 crore in 1QFY18 as compared to 21 crore in 1QFY17 . this is because of high capital utilization.
- # Long term debt is 186 crore in 1QFY18 as compared to 132 crore in 1QFY17.
- # Long term Debt equity Ratio is 0.11.
- # Change in UP govt. will not affect the UP FRP pricing.
- # High sugarcane crushing volume is not the outcome of UP election.It is because the Govt. is aligned both central and state.
- # Mgmt will focus on Sustainable development of 2000 mills in UP.
- # Average realization of Cogeneration is 4.8 rupees . This is the benchmark tariff.
- # 3.8 is net actual cost of Cogeneration which is usually known as

**V-Guard Concall Highlights**

- >>sales was affected by gst & low intensity summer
- >>prices of cables and wire increased 7-9% for gst & another 2% for copper prices
- >>prices of stabilisers were increased by 2%
- >>80% of unorganised market are now billing ,the price difference has scaled down from 30% to 8% between unorganised to organised
- >>15% volume growth guidance
- >>ESOP cost 8Cr every quarter due to GST,160 per year accounting 12% annual increase
- >>Advt cost to increase
- >>inventory level between Distributor & Retailer have fallen from 40 days to 2 weeks level,restocking may take sometime

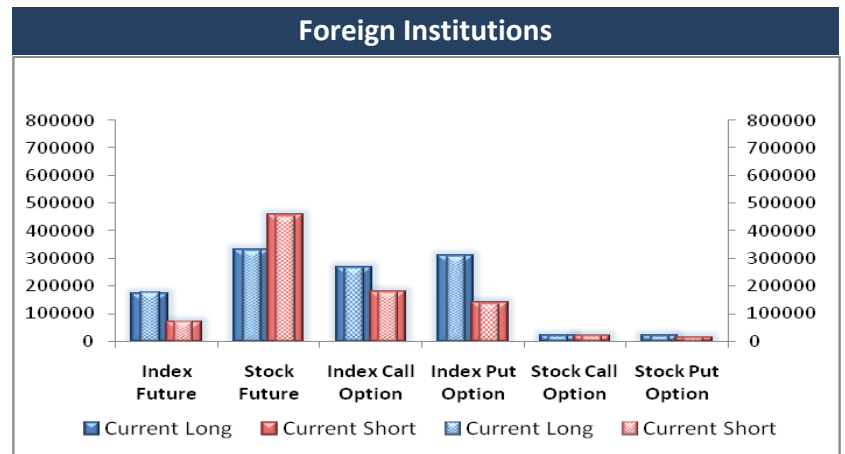
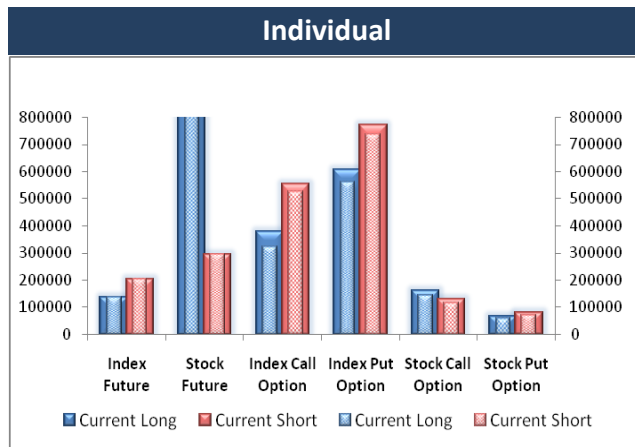
**TECH MAHINDRA 1QFY18 CONCALL UPDATE:**

- # Revenue for 1qfy18 is 7336.1 crore fell of 2.1% QOQ.
- # Total headcount fell 1713 to 115980 people for the quater ended 1qfy18.
- # Employees utilisation stood at 81%.
- # Gain of 1 large network deal in communication and one large manufacturing deal in enterprise for 1qfy18.
- # No more intervention is required in restructuring of network business.
- # Cross currency benefit is 120 bps n 1qfy18.
- # Aquisiton of HCl group in this quater, amount included in revenue.
- # Other income growth was on the back of USD 20 m gain in its hedges , USD 9m benefit from sale of excess land parcel in pune.
- #Tax rate is 25% around for the year.
- #\$100 mn is paid for acquisiton of HCl group.
- # \$325 mn for TCV business.
- #Company is confident about gradual growth and improvement in margin for the vear fv18

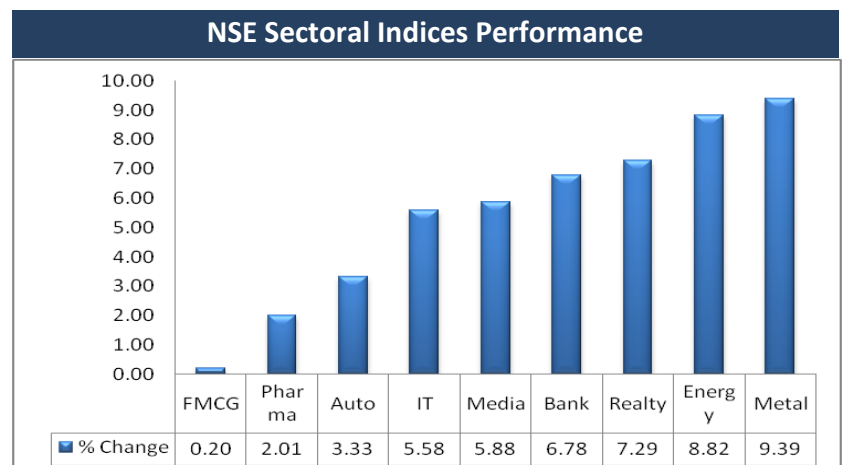
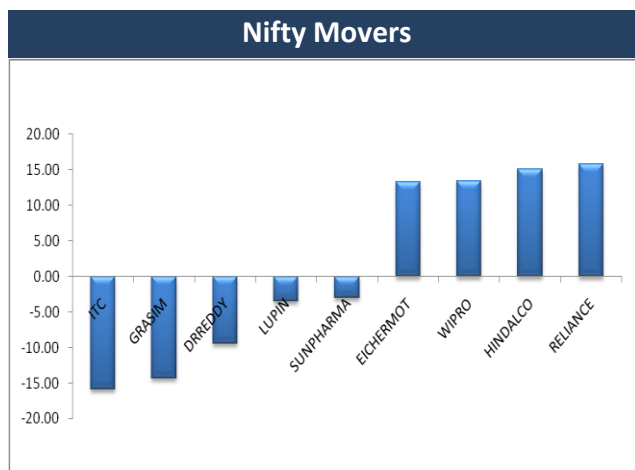
### Block Deal

| Exchange | Deal Date | Company    | Client Name                             | Deal Typ | Quantity | Price |
|----------|-----------|------------|---|----------|----------|-------|
| NSE      | 1-Aug-17  | GPTINFRA   | MODERN TRADING BUSINESS PRIVATE LIMITED | BUY      | 187000   | 124   |
| NSE      | 1-Aug-17  | JPASSOCIAT | ADROIT SHARE & STOCK BROKER PVT. LTD.   | BUY      | 12460889 | 29    |
| NSE      | 1-Aug-17  | OMKARCHEM  | ASHLAR SECURITIES PRIVATE LIMITED       | BUY      | 148510   | 90    |
| NSE      | 1-Aug-17  | OMKARCHEM  | GUPTA GYAN                              | BUY      | 116118   | 91    |
| NSE      | 1-Aug-17  | OMKARCHEM  | MOHAN LAL SHARMA                        | BUY      | 108829   | 93    |
| NSE      | 1-Aug-17  | OMKARCHEM  | PATEL MANAV NARESHBHAI                  | BUY      | 103238   | 93    |
| NSE      | 1-Aug-17  | JPASSOCIAT | ADROIT SHARE & STOCK BROKER PVT. LTD.   | SELL     | 12460889 | 29    |
| NSE      | 1-Aug-17  | OMKARCHEM  | ASHLAR SECURITIES PRIVATE LIMITED       | SELL     | 148510   | 90    |
| NSE      | 1-Aug-17  | OMKARCHEM  | GUPTA GYAN                              | SELL     | 31118    | 92    |
| NSE      | 1-Aug-17  | OMKARCHEM  | MOHAN LAL SHARMA                        | SELL     | 108829   | 93    |
| NSE      | 1-Aug-17  | OMKARCHEM  | OMKAR PRAVIN HERLEKAR                   | SELL     | 150000   | 90    |
| NSE      | 1-Aug-17  | OMKARCHEM  | PATEL MANAV NARESHBHAI                  | SELL     | 103238   | 92    |
| NSE      | 1-Aug-17  | ORTEL      | KOTAK MAHINDRA BANK LIMITED             | SELL     | 200000   | 43    |

### F&O OPEN INTEREST ( Number of Contracts )



### MARKET MOVERS (1 MONTH CHANGE)



**Result Calendar Q1FY18**

| Bse Code | Company Name | Date     | Bse Code | Company Name | Date     |
|----------|--------------|----------|----------|--------------|----------|
| 500043   | BATAINDIA    | 2-Aug-17 | 532300   | WOCKPHARMA   | 2-Aug-17 |
| 532938   | CAPF         | 2-Aug-17 | 505163   | ZFSTEERING   | 2-Aug-17 |
| 526821   | DAICHI       | 2-Aug-17 | 539661   | ACEMEN       | 3-Aug-17 |
| 526315   | DIVSHKT      | 2-Aug-17 | 532406   | AVANTEL      | 3-Aug-17 |
| 532922   | EDELWEISS    | 2-Aug-17 | 500031   | BAJAJELEC    | 3-Aug-17 |
| 523708   | EIMCOELECO   | 2-Aug-17 | 501425   | BBTC         | 3-Aug-17 |
| 513452   | ELANGO       | 2-Aug-17 | 500878   | CEATLTD      | 3-Aug-17 |
| 531162   | EMAMILTD     | 2-Aug-17 | 500830   | COLPAL       | 3-Aug-17 |
| 532700   | ENIL         | 2-Aug-17 | 500480   | CUMMINSIND   | 3-Aug-17 |
| 509563   | GARWAMAR     | 2-Aug-17 | 505700   | ELECON       | 3-Aug-17 |
| 533150   | GODREJPROP   | 2-Aug-17 | 500128   | ELECTCAST    | 3-Aug-17 |
| 526797   | GREENPLY     | 2-Aug-17 | 533477   | ENKEIWHEL    | 3-Aug-17 |
| 508486   | HAWKINCOOK   | 2-Aug-17 | 500133   | ESABINDIA    | 3-Aug-17 |
| 509631   | HEG          | 2-Aug-17 | 500650   | EXCELINDUS   | 3-Aug-17 |
| 517380   | IGARASHI     | 2-Aug-17 | 531375   | GCCLINP      | 3-Aug-17 |
| 500210   | INGERRAND    | 2-Aug-17 | 501455   | GREAVESCOT   | 3-Aug-17 |
| 524592   | JDORGOCHEM   | 2-Aug-17 | 530001   | GUJALKALI    | 3-Aug-17 |
| 539276   | KAYA         | 2-Aug-17 | 511441   | GUJCREC      | 3-Aug-17 |
| 532714   | KEC          | 2-Aug-17 | 509073   | HATHWAYB     | 3-Aug-17 |
| 531163   | KEMISTAR     | 2-Aug-17 | 500185   | HCC          | 3-Aug-17 |
| 504258   | LAKSELEC     | 2-Aug-17 | 534328   | HEXATRADEX   | 3-Aug-17 |
| 500257   | LUPIN        | 2-Aug-17 | 500184   | HSCL         | 3-Aug-17 |
| 524000   | MAGMA        | 2-Aug-17 | 532835   | ICRA         | 3-Aug-17 |
| 539940   | MAXVIL       | 2-Aug-17 | 517526   | INDITALIA    | 3-Aug-17 |
| 531146   | MEDICAMEQ    | 2-Aug-17 | 533676   | INDOTHAI     | 3-Aug-17 |
| 532990   | METKORE      | 2-Aug-17 | 531314   | INTCAPM      | 3-Aug-17 |
| 533088   | MHRIL        | 2-Aug-17 | 536868   | INTELSOFT    | 3-Aug-17 |
| 539767   | MNIL         | 2-Aug-17 | 530965   | IOC          | 3-Aug-17 |
| 539551   | NH           | 2-Aug-17 | 500378   | JINDALSAW    | 3-Aug-17 |
| 538772   | NIYOGIN      | 2-Aug-17 | 500380   | JKLAKSHMI    | 3-Aug-17 |
| 532742   | PAUSHAKLTD   | 2-Aug-17 | 532642   | JSWHL        | 3-Aug-17 |
| 532461   | PNB          | 2-Aug-17 | 531413   | KIRANPR      | 3-Aug-17 |
| 532460   | PONNIERODE   | 2-Aug-17 | 500245   | KIRLFER      | 3-Aug-17 |
| 500390   | RELINFRA     | 2-Aug-17 | 523207   | KOKUYOCLN    | 3-Aug-17 |
| 540143   | SAGARSOFT    | 2-Aug-17 | 531664   | MAHAV        | 3-Aug-17 |
| 539148   | SHIVALIK     | 2-Aug-17 | 501473   | MALTC        | 3-Aug-17 |
| 520086   | SICAL        | 2-Aug-17 | 538970   | MANVIJAY     | 3-Aug-17 |
| 523606   | SIKA         | 2-Aug-17 | 539289   | MJCO         | 3-Aug-17 |
| 532725   | SOLARINDS    | 2-Aug-17 | 532376   | MRO-TEK      | 3-Aug-17 |
| 534369   | TBZ          | 2-Aug-17 | 532864   | NELCAST      | 3-Aug-17 |
| 532349   | TCI          | 2-Aug-17 | 535458   | NIBL         | 3-Aug-17 |
| 523878   | TOTEX        | 2-Aug-17 | 530175   | ODYSSEY      | 3-Aug-17 |
| 532505   | UCOBANK      | 2-Aug-17 | 540173   | PNBHOUSING   | 3-Aug-17 |
| 500575   | VOLTAS       | 2-Aug-17 | 526773   | PRESSURS     | 3-Aug-17 |
| 509966   | VSTIND       | 2-Aug-17 | 512217   | PRISMMEDI    | 3-Aug-17 |
| 532893   | VTMLTD       | 2-Aug-17 | 509220   | PTL          | 3-Aug-17 |

|        |            |          |        |            |          |
|--------|------------|----------|--------|------------|----------|
| 500260 | RAMCOCEM*  | 3-Aug-17 | 539770 | DARJEELING | 4-Aug-17 |
| 532369 | RAMCOIND   | 3-Aug-17 | 532760 | DEEPIND    | 4-Aug-17 |
| 532370 | RAMCOSYS   | 3-Aug-17 | 539405 | DITCO      | 4-Aug-17 |
| 532735 | RSYSTEMINT | 3-Aug-17 | 504908 | DUNCANENG  | 4-Aug-17 |
| 531869 | SACHEMT    | 3-Aug-17 | 500125 | EIDPARRY   | 4-Aug-17 |
| 539252 | SCFL       | 3-Aug-17 | 523127 | EIHAHOTELS | 4-Aug-17 |
| 512529 | SEQUENT    | 3-Aug-17 | 532843 | FORTIS     | 4-Aug-17 |
| 539520 | SHAILJA    | 3-Aug-17 | 538568 | FRUTION    | 4-Aug-17 |
| 524336 | SHHARICH   | 3-Aug-17 | 534063 | FUTSOL     | 4-Aug-17 |
| 505592 | SHKRISHNAB | 3-Aug-17 | 512443 | GANONTR    | 4-Aug-17 |
| 539334 | SHREEPUSHK | 3-Aug-17 | 500670 | GNFC       | 4-Aug-17 |
| 532007 | SHVFL      | 3-Aug-17 | 509488 | GRAPHITE   | 4-Aug-17 |
| 530289 | SPCAPIT    | 3-Aug-17 | 500690 | GSFC       | 4-Aug-17 |
| 540575 | STARCEMENT | 3-Aug-17 | 532467 | HAZOOR     | 4-Aug-17 |
| 531901 | STERWEB    | 3-Aug-17 | 500104 | HINDPETRO  | 4-Aug-17 |
| 508969 | SULABEN    | 3-Aug-17 | 500850 | INDHOTEL   | 4-Aug-17 |
| 506854 | TANFACIND  | 3-Aug-17 | 517423 | INTEGSW    | 4-Aug-17 |
| 540595 | TEJASNET   | 3-Aug-17 | 511618 | JKIND      | 4-Aug-17 |
| 500114 | TITAN      | 3-Aug-17 | 533293 | KIRLOSENG  | 4-Aug-17 |
| 531846 | TRINITYLEA | 3-Aug-17 | 540192 | LKPSEC     | 4-Aug-17 |
| 539874 | UJJIVAN    | 3-Aug-17 | 500520 | M&M        | 4-Aug-17 |
| 507880 | VIPIND     | 3-Aug-17 | 532637 | MANGALAM   | 4-Aug-17 |
| 530697 | ZENLABS    | 3-Aug-17 | 500206 | MARGOFIN   | 4-Aug-17 |
| 512017 | ZEXDONTR   | 3-Aug-17 | 524084 | MONSANTO   | 4-Aug-17 |
| 523204 | ABAN       | 4-Aug-17 | 500290 | MRF        | 4-Aug-17 |
| 505665 | ABCBEARS   | 4-Aug-17 | 524808 | PHYTO      | 4-Aug-17 |
| 523411 | ADCINDIA   | 4-Aug-17 | 531172 | PRNAVSP    | 4-Aug-17 |
| 522273 | AHMDSTE    | 4-Aug-17 | 532441 | RAINBOWDQ  | 4-Aug-17 |
| 533029 | ALKALI     | 4-Aug-17 | 500358 | RAMAPETRO  | 4-Aug-17 |
| 526397 | ALPHAGEO   | 4-Aug-17 | 531033 | REGAL      | 4-Aug-17 |
| 530133 | AMCOIND    | 4-Aug-17 | 535322 | REPCOHOME  | 4-Aug-17 |
| 532418 | ANDHRABANK | 4-Aug-17 | 520008 | RICOAUTO   | 4-Aug-17 |
| 500877 | APOLLOTYRE | 4-Aug-17 | 531539 | RISHDIGA   | 4-Aug-17 |
| 540616 | ARTEMIS    | 4-Aug-17 | 533168 | ROSSELLIND | 4-Aug-17 |
| 500101 | ARVIND     | 4-Aug-17 | 532983 | RPGLIFE    | 4-Aug-17 |
| 505029 | ATLASCYCLE | 4-Aug-17 | 503691 | SAHARA     | 4-Aug-17 |
| 539834 | BALGOPAL   | 4-Aug-17 | 538992 | SAPL       | 4-Aug-17 |
| 522004 | BATLIBOI   | 4-Aug-17 | 532163 | SAREGAMA   | 4-Aug-17 |
| 512195 | BENTCOM    | 4-Aug-17 | 540203 | SFL        | 4-Aug-17 |
| 509480 | BERGEPAIN  | 4-Aug-17 | 512393 | SHARDUL    | 4-Aug-17 |
| 539662 | BFLDEV     | 4-Aug-17 | 517411 | SHYAMTEL   | 4-Aug-17 |
| 524396 | BIOFILCHEM | 4-Aug-17 | 532784 | SOBHA      | 4-Aug-17 |
| 526925 | BOBSHELL   | 4-Aug-17 | 539026 | SSPNFIN    | 4-Aug-17 |
| 505690 | BRADYM     | 4-Aug-17 | 513151 | STINDIA    | 4-Aug-17 |
| 509486 | CAPRIHANS  | 4-Aug-17 | 590072 | SUNDRMBRAK | 4-Aug-17 |
| 504671 | CHASBRT    | 4-Aug-17 | 512527 | SUPER      | 4-Aug-17 |
| 500110 | CHENNPETRO | 4-Aug-17 | 539406 | SWAGTAM    | 4-Aug-17 |
| 532992 | CHLLTD     | 4-Aug-17 | 501242 | TCIFINANCE | 4-Aug-17 |
| 500096 | DABUR      | 4-Aug-17 | 517562 | TRIGYN     | 4-Aug-17 |

|        |             |          |        |            |          |
|--------|-------------|----------|--------|------------|----------|
| 507747 | TTKHEALTH   | 4-Aug-17 | 513540 | TNSTLTU    | 5-Aug-17 |
| 538565 | VISTARAMAR  | 4-Aug-17 | 536565 | TRIMURTHI  | 5-Aug-17 |
| 539118 | VRLOG       | 4-Aug-17 | 530459 | VALSONQ    | 5-Aug-17 |
| 501391 | WHBRADY     | 4-Aug-17 | 532116 | XOINFO     | 5-Aug-17 |
| 512367 | ZSHERAPR    | 4-Aug-17 | 500008 | AMARAJABAT | 7-Aug-17 |
| 512291 | ZSPEEDCO    | 4-Aug-17 | 504648 | BOMBWIR    | 7-Aug-17 |
| 532774 | AFL         | 5-Aug-17 | 500825 | BRITANNIA  | 7-Aug-17 |
| 532327 | ALLSOFT     | 5-Aug-17 | 524742 | CAPPL      | 7-Aug-17 |
| 532141 | ANDHRACEMT  | 5-Aug-17 | 523736 | DPL        | 7-Aug-17 |
| 500012 | ANDHRAPET   | 5-Aug-17 | 531508 | EVEREADY   | 7-Aug-17 |
| 531179 | ARMANFIN    | 5-Aug-17 | 500142 | FGP        | 7-Aug-17 |
| 505681 | BIMETAL     | 5-Aug-17 | 500166 | GOODRICKE  | 7-Aug-17 |
| 523019 | BNRSEC      | 5-Aug-17 | 526751 | GRATEXI    | 7-Aug-17 |
| 530809 | BNRUDY      | 5-Aug-17 | 505710 | GRAUWEIL   | 7-Aug-17 |
| 502216 | BOMBPOT     | 5-Aug-17 | 533315 | INOVSYNTH  | 7-Aug-17 |
| 538786 | CIL         | 5-Aug-17 | 539597 | JSLHISAR   | 7-Aug-17 |
| 534691 | COMCL       | 5-Aug-17 | 539524 | LALPATHLAB | 7-Aug-17 |
| 535267 | COMFINCAP   | 5-Aug-17 | 500252 | LAXMIMACH  | 7-Aug-17 |
| 531216 | COMFINTE    | 5-Aug-17 | 512455 | LLOYDSME   | 7-Aug-17 |
| 533309 | DALMIABHA   | 5-Aug-17 | 500126 | MERCK      | 7-Aug-17 |
| 531599 | FDC         | 5-Aug-17 | 524816 | NATCOPHARM | 7-Aug-17 |
| 523836 | GUJRAFIA    | 5-Aug-17 | 526721 | NICCOPAR   | 7-Aug-17 |
| 530519 | INTERFAC    | 5-Aug-17 | 523385 | NILKAMAL   | 7-Aug-17 |
| 532532 | JPASSOCIAT  | 5-Aug-17 | 537839 | PHOENIXTN  | 7-Aug-17 |
| 526923 | KUMAKAIND   | 5-Aug-17 | 532254 | POLARIS    | 7-Aug-17 |
| 512048 | LUHARUKA    | 5-Aug-17 | 526009 | PROCAL     | 7-Aug-17 |
| 511000 | MADHUSE     | 5-Aug-17 | 590051 | SAKSOFT    | 7-Aug-17 |
| 524232 | MAHAPOL     | 5-Aug-17 | 526739 | SHAWGELTIN | 7-Aug-17 |
| 538964 | MERCURYLAB  | 5-Aug-17 | 538891 | SIPROJECTS | 7-Aug-17 |
| 526642 | MIRZAINI    | 5-Aug-17 | 533306 | SUMMITSEC  | 7-Aug-17 |
| 524709 | NAGAAGRI    | 5-Aug-17 | 532070 | SUPRBPA    | 7-Aug-17 |
| 530119 | NATRAJPR    | 5-Aug-17 | 500470 | TATASTEEL  | 7-Aug-17 |
| 532698 | NITINSPIN   | 5-Aug-17 | 500238 | WHIRLPOOL  | 7-Aug-17 |
| 502165 | OCL         | 5-Aug-17 | 538451 | WORTH      | 7-Aug-17 |
| 523389 | OXIDE       | 5-Aug-17 | 500488 | ABBOTINDIA | 8-Aug-17 |
| 519439 | PIONAGR     | 5-Aug-17 | 539560 | ABHIJIT    | 8-Aug-17 |
| 513613 | PRESHAMET   | 5-Aug-17 | 531147 | ALICON     | 8-Aug-17 |
| 531688 | PRITHVIEXCH | 5-Aug-17 | 531300 | AMITINT    | 8-Aug-17 |
| 532891 | PURVA       | 5-Aug-17 | 531017 | ARISE      | 8-Aug-17 |
| 532024 | RBGUPTA     | 5-Aug-17 | 539017 | ASHFL      | 8-Aug-17 |
| 530517 | RELAXO      | 5-Aug-17 | 523716 | ASHIANA    | 8-Aug-17 |
| 512047 | ROYALIND    | 5-Aug-17 | 532830 | ASTRAL     | 8-Aug-17 |
| 513295 | RUCHISTR    | 5-Aug-17 | 506820 | ASTRAZEN   | 8-Aug-17 |
| 504614 | SARDAEN     | 5-Aug-17 | 512277 | AUTOINT    | 8-Aug-17 |
| 519031 | SHAHFOOD    | 5-Aug-17 | 532989 | BAFNAPHARM | 8-Aug-17 |
| 504382 | SMPXTR      | 5-Aug-17 | 532149 | BANKINDIA  | 8-Aug-17 |
| 532872 | SPARC       | 5-Aug-17 | 512608 | BHANDHOS   | 8-Aug-17 |
| 532276 | SYNDIBANK   | 5-Aug-17 | 500060 | BIRLACABLE | 8-Aug-17 |
| 531115 | SYNERGY     | 5-Aug-17 | 500040 | CENTURYTEX | 8-Aug-17 |



|        |            |          |        |             |          |
|--------|------------|----------|--------|-------------|----------|
| 500085 | CHAMBLFERT | 8-Aug-17 | 511712 | RELICTEC    | 8-Aug-17 |
| 538868 | CSL        | 8-Aug-17 | 530271 | RICHUNV     | 8-Aug-17 |
| 506401 | DEEPAKNI   | 8-Aug-17 | 500350 | RSWM        | 8-Aug-17 |
| 500119 | DHAMPURSUG | 8-Aug-17 | 532785 | RUCHIRA     | 8-Aug-17 |
| 533336 | DHUNINV    | 8-Aug-17 | 509423 | SEL         | 8-Aug-17 |
| 503681 | ELCIDIN    | 8-Aug-17 | 512297 | SHANTAI     | 8-Aug-17 |
| 540153 | ENDURANCE  | 8-Aug-17 | 533018 | SIMPLXMIL   | 8-Aug-17 |
| 532809 | FSL        | 8-Aug-17 | 533019 | SIMPLXPAP   | 8-Aug-17 |
| 505714 | GABRIEL    | 8-Aug-17 | 503229 | SIMPLXREA   | 8-Aug-17 |
| 539492 | GARBIFIN   | 8-Aug-17 | 503806 | SRF         | 8-Aug-17 |
| 517300 | GIPCL      | 8-Aug-17 | 534680 | SRGHFL      | 8-Aug-17 |
| 531449 | GRMOVER    | 8-Aug-17 | 511654 | SUGALDAM    | 8-Aug-17 |
| 500676 | GSKCONS    | 8-Aug-17 | 514211 | SUMMEETINDS | 8-Aug-17 |
| 514386 | GUJCOTEX   | 8-Aug-17 | 520056 | SUNCLAYLTD  | 8-Aug-17 |
| 524080 | HARLETH    | 8-Aug-17 | 533170 | TAMBOLI     | 8-Aug-17 |
| 532333 | HBPOR      | 8-Aug-17 | 500770 | TATACHEM    | 8-Aug-17 |
| 501295 | IITL       | 8-Aug-17 | 500411 | THERMAX     | 8-Aug-17 |
| 533177 | IL&FSTRANS | 8-Aug-17 | 532026 | THEWEST     | 8-Aug-17 |
| 532705 | JAGRAN     | 8-Aug-17 | 522113 | TIMKEN      | 8-Aug-17 |
| 523398 | JCHAC      | 8-Aug-17 | 500231 | UMANGDAIR   | 8-Aug-17 |
| 536493 | JK AGRI    | 8-Aug-17 | 504212 | UNIVCABLES  | 8-Aug-17 |
| 508929 | JOYREALTY  | 8-Aug-17 | 509960 | UPHOT       | 8-Aug-17 |
| 506525 | KANORICHEM | 8-Aug-17 | 517146 | USHAMART    | 8-Aug-17 |
| 531587 | KNIWE      | 8-Aug-17 | 539543 | VALLEY      | 8-Aug-17 |
| 532899 | KSCL       | 8-Aug-17 | 531950 | VERTEX      | 8-Aug-17 |
| 500250 | LGBBROSLTD | 8-Aug-17 | 520113 | VESUVIUS    | 8-Aug-17 |
| 533007 | LGBFORGE   | 8-Aug-17 | 531668 | VISIONCO    | 8-Aug-17 |
| 502157 | MANGLMCEM  | 8-Aug-17 | 519224 | WILLAMAGOR  | 8-Aug-17 |
| 532654 | MCLEODRUSS | 8-Aug-17 | 512587 | ZODJRD MJ   | 8-Aug-17 |
| 532865 | MEGH       | 8-Aug-17 | 523395 | 3MINDIA     | 9-Aug-17 |
| 538890 | MKEXIM     | 8-Aug-17 | 532268 | ACCELYA     | 9-Aug-17 |
| 503015 | MODERN     | 8-Aug-17 | 532331 | AJANTPHARM  | 9-Aug-17 |
| 533398 | MUTHOOTFIN | 8-Aug-17 | 531878 | ANJANIFIN   | 9-Aug-17 |
| 500294 | NCC        | 8-Aug-17 | 532259 | APARINDS    | 9-Aug-17 |
| 509040 | NETLINK    | 8-Aug-17 | 518091 | APCL        | 9-Aug-17 |
| 534076 | ORIENTREF  | 8-Aug-17 | 540611 | AUBANK      | 9-Aug-17 |
| 508941 | PANCARBON  | 8-Aug-17 | 524804 | AUROPHARMA  | 9-Aug-17 |
| 500143 | PHCAP      | 8-Aug-17 | 532507 | BAGFILMS    | 9-Aug-17 |
| 500338 | PRISMCEM   | 8-Aug-17 | 523319 | BALMLAWRIE  | 9-Aug-17 |
| 507962 | RAJATH     | 8-Aug-17 | 524687 | BASANTGL    | 9-Aug-17 |
| 537840 | RAUNAQEPC  | 8-Aug-17 | 506285 | BAYERCROP   | 9-Aug-17 |
| 511585 | REGTRUS    | 8-Aug-17 | 533095 | BENGALASM   | 9-Aug-17 |

### Earning Estimate Q1FY18

| DATE     | NSE code   | Sales    | sales Growth | PAT     | PAT Growth |
|----------|------------|----------|--------------|---------|------------|
| 1-Aug-17 | JSWSTEEL   | 13727.10 | 17.20        | 452.80  | (59.20)    |
| 1-Aug-17 | TECHM      | 7197.90  | 4.00         | 648.10  | (1.20)     |
| 1-Aug-17 | POWERGRID  | 7255.80  | 19.60        | 2182.20 | 21.20      |
| 1-Aug-17 | SHRIRAMCIT | 792.10   | 15.40        | 212.50  | 16.90      |
| 2-Aug-17 | VOLTAS     | 1956.80  | 5.80         | 167.90  | 7.10       |
| 2-Aug-17 | EMAMILTD   | 612.20   | (5.00)       | 90.40   | (23.10)    |
| 2-Aug-17 | LUPIN      | 4403.60  | (1.40)       | 597.10  | (32.30)    |
| 2-Aug-17 | BATA       | 728.50   | 8.00         | 57.70   | 14.50      |
| 2-Aug-17 | PNB        | 3933.50  | 6.30         | 446.40  | 45.70      |
| 3-Aug-17 | CEAT       | 1547.40  | (6.00)       | 67.90   | (35.20)    |
| 3-Aug-17 | CUMMINSIND | 1315.00  | 4.40         | 168.00  | (7.30)     |
| 3-Aug-17 | RAMCOCEM   | 1012.10  | 4.70         | 149.80  | (3.90)     |
| 3-Aug-17 | COLPAL     | 1076.00  | 7.00         | 145.60  | 15.80      |
| 3-Aug-17 | IOC        | 89981.00 | 5.10         | 3248.30 | (60.70)    |
| 3-Aug-17 | TITAN      | 3478.10  | 25.00        | 225.20  | 0.70       |
| 4-Aug-17 | M&M        | 10910.30 | 3.70         | 979.50  | 9.40       |
| 4-Aug-17 | DABUR      | 1808.50  | (6.00)       | 256.90  | (12.30)    |
| 4-Aug-17 | FORTIS     | 1222.10  | 9.00         | (7.90)  | PL         |
| 4-Aug-17 | HINDPETRO  | 45243.90 | 1.00         | 869.00  | (58.60)    |
| 4-Aug-17 | ARVIND     | 2304.30  | 9.50         | 63.90   | (13.00)    |
| 4-Aug-17 | REPCOHOME  | 104.30   | 24.20        | 47.90   | 21.20      |
| 5-Aug-17 | DALMIABHA  | 2033.30  | 15.20        | 227.60  | 142.20     |
| 7-Aug-17 | AMARAJABAT | 1479.30  | 12.00        | 128.80  | (1.40)     |

### Result Q1FY18

| Bse Code | NSE code   | Sales   | sales Growth | PAT    | PAT Growth |
|----------|------------|---------|--------------|--------|------------|
| 511431   | VAKRANGEE  | 1288.22 | 40.40        | 166.50 | 37.05      |
| 500038   | BALRAMCHIN | 1143.00 | 44.81        | 119.76 | 8.18       |
| 500042   | BASF       | 1649.00 | 18.64        | 0.68   | (93.07)    |
| 513375   | CARBORUNIV | 546.95  | 9.57         | 41.77  | 4.19       |



|        |              |          |         |         |           |
|--------|--------------|----------|---------|---------|-----------|
| 500403 | SUNDRMFAST   | 841.56   | 20.07   | 90.46   | 19.74     |
| 500420 | TORNTPHARM   | 1374.00  | (11.41) | 134.00  | (54.11)   |
| 512070 | UPL          | 3952.00  | 14.48   | 487.00  | 34.92     |
| 532953 | VGUARD       | 572.22   | 0.41    | 22.92   | (46.42)   |
| 532939 | RPOWER       | 2635.00  | 11.64   | 230.60  | (32.27)   |
| 500550 | SIEMENS      | 2758.00  | 7.60    | 162.90  | 25.27     |
| 532627 | JPOWER       | 995.90   | 32.76   | (19.02) | (90.30)   |
| 500251 | TRENT        | 499.20   | 27.52   | 38.20   | 63.95     |
| 531344 | CONCOR       | 1456.10  | 8.73    | 243.40  | 36.37     |
| 532755 | TECHM        | 7336.10  | 6.00    | 410.70  | (48.44)   |
| 523367 | DCMSHRIRAM   | 2052.00  | 42.87   | 233.47  | 39.65     |
| 534809 | PCJEWELLER   | 2140.00  | 28.57   | 135.00  | 26.65     |
| 532390 | TAJGVK       | 59.44    | 1.89    | 1.96    | (20.33)   |
| 531642 | MARICO       | 1715.00  | (1.99)  | 235.94  | (11.93)   |
| 505533 | WESTLIFE     | 263.12   | 16.29   | 0.29    | (109.94)  |
| 500302 | PEL          | 2254.00  | 27.99   | 302.33  | 30.92     |
| 502742 | Sintex Inds. | 687.56   | 177.58  | 35.07   | (1475.29) |
| 500875 | ITC          | 9876.45  | (0.82)  | 2560.50 | 7.37      |
| 530011 | MANGCHEFER   | 592.85   | 6.24    | (3.19)  | (61.84)   |
| 500680 | PFIZER       | 420.91   | (16.02) | 57.17   | (28.57)   |
| 502450 | SESHAPAPER   | 238.64   | (1.32)  | 21.75   | (9.83)    |
| 500387 | SHREECEM     | 2536.27  | 15.35   | 440.11  | (13.31)   |
| 510245 | SWASTIVI     | 4.39     | 8.40    | 0.42    | 16.67     |
| 506579 | ORIENTCARB   | 77.43    | 2.56    | 14.56   | 0.21      |
| 502090 | SAGCEM       | 258.76   | 31.06   | 9.97    | (3934.62) |
| 500171 | GHCL         | 750.39   | 9.57    | 157.86  | 53.52     |
| 515037 | MURUDCERA    | 29.15    | 9.88    | 0.55    | 89.66     |
| 506894 | CHEMFALKAL   | 38.86    | 28.00   | 4.23    | (31.66)   |
| 515043 | SAINTGOBAIN  | 30.94    | (9.95)  | 1.80    | (35.94)   |
| 506532 | KERALACHEM   | 58.92    | (33.39) | (1.29)  | (128.04)  |
| 511218 | SRTRANSFIN   | 2898.39  | 7.88    | 448.68  | 19.94     |
| 522108 | YUKENINDIA   | 46.29    | 3.35    | 0.75    | (143.10)  |
| 590062 | ANDHRSUGAR   | 237.43   | 20.73   | 21.83   | 10.92     |
| 512296 | BHAGYNAGAR   | 96.88    | 39.10   | 1.41    | 101.43    |
| 524226 | GAEL         | 690.43   | (10.38) | 16.84   | (66.11)   |
| 500329 | PENTSFWARE   | 1.68     | 78.72   | 0.18    | (57.14)   |
| 500147 | FLATPROD     | 52.86    | 107.86  | 0.19    | (102.28)  |
| 511473 | INDBANK      | 3.23     | 36.86   | 1.85    | 5.11      |
| 516082 | NRAGRINDQ    | 276.53   | 9.90    | 21.42   | 74.00     |
| 524667 | SOTL         | 417.87   | 23.14   | 23.39   | 15.56     |
| 526899 | HIMIN        | 28.55    | (5.90)  | (0.93)  | 121.43    |
| 530393 | DBSTOCKBRO   | 1.09     | (4.39)  | 0.05    | (58.33)   |
| 530389 | GEEFC        | 1.01     | (50.25) | (0.03)  | 200.00    |
| 530499 | AKCAPIT      | 24.86    | 41.57   | 4.32    | (5.68)    |
| 530721 | ANGIND       | 8.85     | (51.59) | (26.75) | (39.48)   |
| 502405 | MYSPEPE      | 0.51     | (97.95) | (45.42) | 46.09     |
| 532555 | NTPC         | 19879.32 | 4.28    | 2618.17 | 11.95     |
| 532348 | Subex        | 76.18    | (8.59)  | (1.01)  | (105.56)  |
| 590122 | ASHIKACR     | 1.15     | 41.98   | 0.28    | (90.00)   |

|        |                 |          |         |        |          |
|--------|-----------------|----------|---------|--------|----------|
| 532414 | IKFTECH         | 20.43    | 38.32   | 0.23   | (41.03)  |
| 532424 | GODREJCP        | 1091.66  | 4.72    | 149.56 | (2.16)   |
| 532959 | GAMMNINFRA      | 23.72    | (70.66) | 0.78   | (86.73)  |
| 533138 | ASTEC           | 72.27    | 2.96    | 3.99   | 6.12     |
| 532979 | PIRPHYTO        | 3.62     | 456.92  | (4.56) | 7500.00  |
| 533227 | AHLEAST         | 24.71    | 9.53    | 3.98   | 598.25   |
| 538666 | Sharda Cropchem | 341.12   | 8.41    | 43.22  | 5.75     |
| 500228 | JSWSTEEL        | 15977.00 | 38.25   | 624.00 | (43.73)  |
| 502420 | ORIENTPPR       | 157.53   | 64.09   | 33.00  | 54.78    |
| 526227 | FILATEX         | 477.32   | 36.28   | 14.33  | 51.00    |
| 500840 | EIHOTEL         | 303.26   | 10.74   | 9.48   | (177.45) |

### Economic Calendar

| Country      | Monday<br>31th July 17  | Tuesday<br>1st Aug 17   | Wednesday<br>2nd Aug 17                                 | Thursday<br>3rd Aug 17   | Friday<br>4th Aug 17   |
|--------------|---|---|---|--|--|
| US           | Chicago PMI, Pending Home Sales m/m, Loan Officer Survey.   | Core PCE Price Index m/m, Personal Spending m/m, Personal Income m/m, Final Manufacturing PMI, ISM Manufacturing PMI, Construction Spending m/m, ISM Manufacturing Prices, Total Vehicle Sales. | ADP Non-Farm Employment Change, Crude Oil Inventories.  | Challenger Job Cuts y/y, Unemployment Claims, Final Services PMI, ISM Non-Manufacturing PMI, Factory Orders m/m, Natural Gas Storage.  | Average Hourly Earnings m/m, Non-Farm Employment Change, Unemployment Rate, Trade Balance. |
| UK/EURO ZONE | German Retail Sales m/m, German Unemployment Change, Italian Monthly Unemployment Rate, Net Lending to Individuals m/m, M4 Money Supply m/m, Mortgage Approvals, CPI Flash Estimate y/y, Core CPI Flash Estimate y/y, Unemployment Rate | Italian Manufacturing PMI, French Final Manufacturing PMI, German Final Manufacturing PMI, Final Manufacturing PMI, Manufacturing PMI, Prelim Flash GDP q/q.                                    | Spanish Unemployment Change, Construction PMI, PPI m/m. | Spanish Services PMI, Italian Services PMI, French Final Services PMI, German Final Services PMI, ECB Economic Bulletin, Final Services PMI, Retail PMI, Services PMI, BOE Inflation Report, MPC Official Bank Rate Votes, Monetary Policy Summary, Official Bank Rate, Asset Purchase Facility, MPC Asset Purchase Facility Votes, BOE Gov Carney Speaks. | German Factory Orders m/m, French 10-y Bond Auction  |
| INDIA        |   | Auto no, Nikkei Manufacturing PMI.  |   |  | Nikkei Services PMI  |



## Narnolia Securities Ltd

201 | 2nd Floor | Marble Arch Building | 236B-AJC Bose Road |  
Kolkata-700 020 , Ph : 033-40501500

email: [narnolia@narnolia.com](mailto:narnolia@narnolia.com), website  
: [www.narnolia.com](http://www.narnolia.com)

**Risk Disclosure & Disclaimer:** This report/message is for the personal information of the authorized recipient and does not construe to be any investment, legal or taxation advice to you. Narnolia Securities Ltd. (Hereinafter referred as NSL) is not soliciting any action based upon it. This report/message is not for public distribution and has been furnished to you solely for your information and should not be reproduced or redistributed to any other person in any form. The report/message is based upon publicly available information, findings of our research wing "East wind" & information that we consider reliable, but we do not represent that it is accurate or complete and we do not provide any express or implied warranty of any kind, and also these are subject to change without notice. The recipients of this report should rely on their own investigations, should use their own judgment for taking any investment decisions keeping in mind that past performance is not necessarily a guide to future performance & that the the value of any investment or income are subject to market and other risks. Further it will be safe to assume that NSL and /or its Group or associate Companies, their Directors, affiliates and/or employees may have interests/ positions, financial or otherwise, individually or otherwise in the recommended/mentioned securities/mutual funds/ model funds and other investment products which may be added or disposed including & other mentioned in this report/message.