

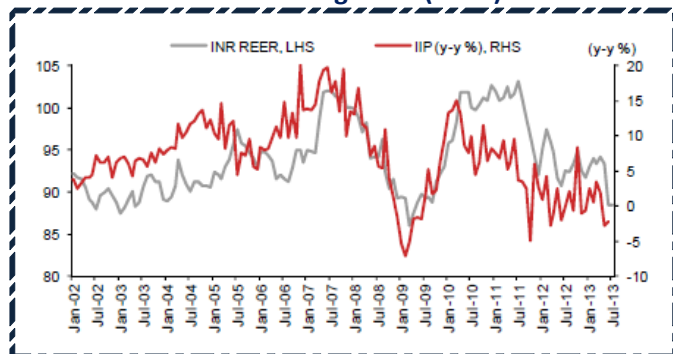
Quote of The Day

"Develop into a lifelong self-learner through voracious reading; cultivate curiosity and strive to become a little wiser every day."
Charlie Munger

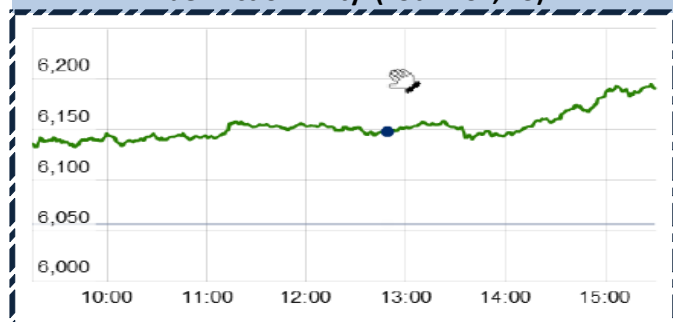
SGX NIFTY : 6236 (8pts Up)

Chart of the Day

INR real Effective Exchange Rate(REER) Vs IIP Trend



Index Action-Nifty (29th Nov, 13)



Index

Contents	Page	Coverage
Economic calendar	4	UPDATE
News	3	UPDATE
Derivative Research	2	UPDATE

MARKET

Name	Value	Change
Sensex	20791.79	257.02
Nifty	6176.1	84.25
DOW	Closed	
NASDAQ	Closed	
CAC	4295.21	(7.21)
DAX	9405.3	17.93
FTSE	6650.57	(3.90)
NIKKIE	15642.69	(19.18)
HANG SENG	24034.8	153.51
EW ALL SHARE	9849.38	116.59

INSTITUTIONAL TURNOVER

FII			
Investor	Buy(Cr.)	Sale(Cr.)	Net(Cr.)
29th Nov, 13	2632.22	1,887.06	745.16
Nov,13	46176.84	38,881.31	7295.53
2013	680495.00	607,769.45	72725.55
DII			
Investor	Buy(Cr.)	Sale(Cr.)	Net(Cr.)
29th Nov, 13	1042.58	1,144.34	(101.76)
Nov,13	13885.75	22,676.02	(8790.27)
2013	234418.07	295,512.57	(61094.50)

COMMODITY PRICE

COMMODITY/CURRENCIES	Value	
GOLD	30236.00	↑
SILVER	44274.00	↑
CRUDEOIL	110.25	↑
COPPER	450.85	↑
NATURALGAS	246.70	↓
DOLLAR/RS.	62.44	↑
EURO/RS.	84.84	↑
POUND/RS.	102.47	↑

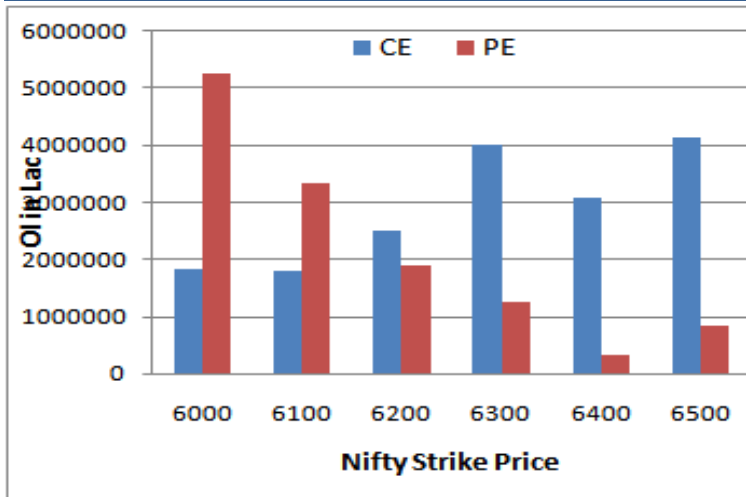
Narnolia Securities Ltd.

124, 1st floor 7/1, Lords Sinha Road Kolkata -700071. Ph 033-22821500/01/02/03/04 Mob : 9830013196
email: research@narnolia.com, website : www.narnolia.com

NIFTY SNAPSHOT

Nifty Spot	6176.10(+84.25)
Nifty Nov 2013 Future	6228
Nifty Dec 2013 Future	6280
Nifty Nov 2013 Open Interest	18177100
Nifty Dec 2013 Open Interest	1822150
7 DMA of Spot Nifty	6070
21 DMA of Spot Nifty	6136
50 DMA of Spot Nifty	6069
VOLATILITY INDEX (VIX)	21.38(+0.67)
PUT CALL RATIO	0.96

Nifty (Nov Series) Option OI Distribution:



Activity of Nifty (Nov Series) Strike

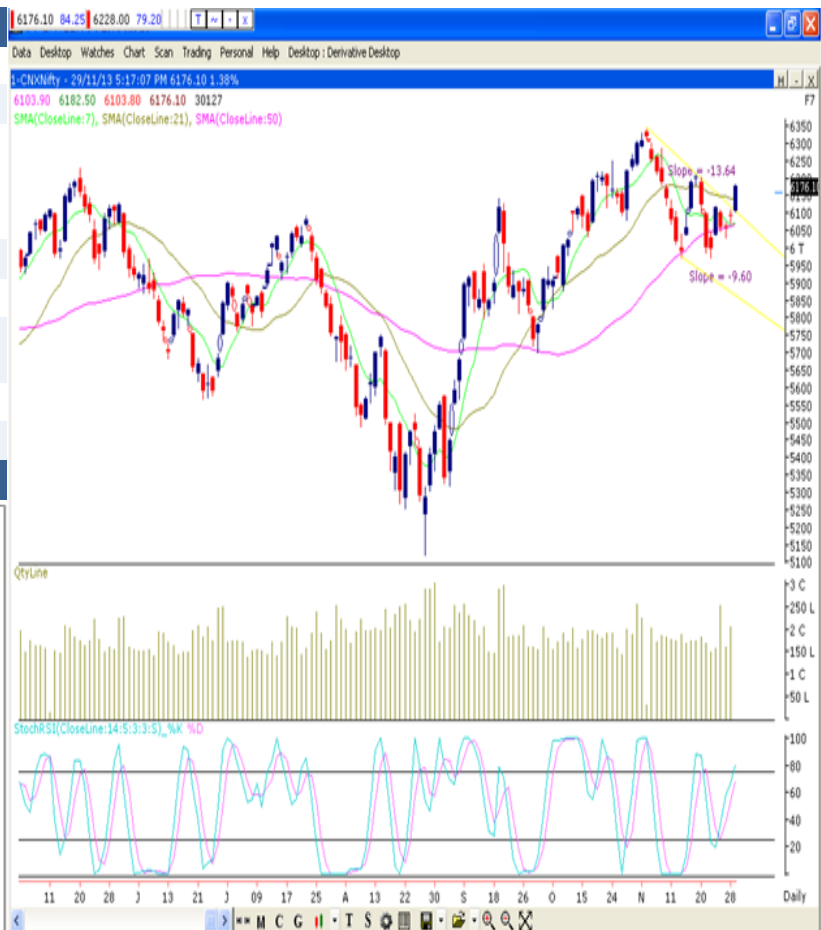
Strike	CALL		PUT	
	OI	% Chng	OI	% Chng
6000	1833700	-3.7	5273000	12.8
6100	1794200	0.5	3341250	20.4
6200	2497250	9.1	1905450	20.4
6300	4020350	0.4	1248650	20.0
6400	3083350	19.4	334400	6.0
6500	4127600	12.9	832850	-1.3

Fresh Long Seen In (Rising OI -Rising Price)

Scrip	OI	OI ch%	CMP	Ch%
-------	----	--------	-----	-----

PCR (OI)

STOCK	T1	T2
HINDZINC	0.09	0.02
IOC	1.14	0.45
HDFC	1.26	0.52
WIPRO	0.69	0.29
CESC	1.00	0.43



FIIs Activity (Fig in Cr)

Segment	Buy	Sell	Net
INDEX FUTURE	4,105	3,072	1,032
INDEX OPTION	17,926	16,953	973
STOCK FUTURE	6,288	6,267	21
STOCK OPTION	566	544	21
TOTAL	28,885	26,837	2,048

Fresh Shorts Seen In: (Rising OI -Falling Price)

Scrip	OI	OI ch%	CMP	Ch%
-------	----	--------	-----	-----

YESTERDAY'S IMPACT TRADE

STOCK	STRIKE CE	STOCK	STRIKE PE
SBIN	1800 CE	SBIN	1750 PE
JPASSOCIAT	60 CE	JPASSOCIAT	50 PE
BHEL	160 CE	MCDOWELL-N	2600 PE
RELIANCE	860 CE	POWERGRID	90 PE
DLF	160 CE	TATASTEEL	400 PE

Markets Snapshot

Top Price Performers

Top Performers 1D	% Change	Top Performers 1W	% Change	Top Performers 1M	% Change
SRF	20.00	DICIND	49.47	SURAJLTD	104.36
ASHAPURMIN	19.98	SPIC	47.67	RICOHQ	101.86
GLOBOFFS	19.97	ASHAPURMIN	41.58	YBRANTDIGI	84.64
BLKASHYAP	19.87	SHAKTIPUMP	35.54	ZENOTECH	78.16
JBFINDD	17.54	TRIDENT	33.90	THINKSOFT	77.36

Worst Price Performers

Worst Performers 1D	% Change	Worst Performers 1W	% Change	Worst Performers 1M	% Change
IMPAL	(10.52)	CCI	(23.85)	GODREJPROP	(54.61)
SGJHL	(9.91)	SGJHL	(22.28)	SGJHL	(43.07)
SPANCO	(9.86)	SUDAR	(22.13)	NEWINFRA	(41.96)
STRAUSIND	(8.61)	BILENERGY	(21.95)	SHLAKSHMI	(38.35)
PVP	(7.75)	SHLAKSHMI	(21.15)	ERAINFRA	(37.08)

Top News :

- Steel Strips Wheels** received an export order from Korea-based SSangYong Motors Company (SYMC). The order is for supplying car wheels rims to Korea and the order size will be approximately USD 5 million . The order will be served for a minimum of 5 years. SSWL says it will initially serve 20 percent of the total demand and will gradually be ramped up along with the performance.
- IL&FS Transportation** Wholly owned subsidiary ITNL International today in Singapore signed joint venture agreement with three Chinese companies, wherein IIPL holds 28 percent equity interest. Its Spain subsidiary Elsamex SA received a contract worth euro 50.5 million (approximately Rs 427 crore).
- Reliance Power** announced that pre commissioning activities for its Concentrated Solar Power (CSP) project in Rajasthan's Jaisalmer District. The project is the worlds largest CSP project based on CLFR technology. Pre-Commissioning Activities Commenced at 100 MW CSP Project of Reliance Power in Rajasthan .
- CRISIL** has reviewed the rating of PI Industries for the bank facilities sanctioned by various bankers. CRISIL has reviewed the rating of PI Industries for the bank facilities sanctioned by various bankers
- Alphageo** secured Contract from GAIL (India) Limited". Alphageo (India) has secured a contract for acquisition of 2D and 3D Seismic Data from GAIL (India) for an estimated contract value of Rs 30.37 crore
- South African Revenue Service** said that South African Trade Balance fell to -20.97B, from -18.94B in the preceding month whose figure was revised up from -18.94B. Analysts had expected South African Trade Balance to rise to -12.75B last month.
- Eurostat said that Euro zone CPI** rose to a seasonally adjusted annual rate of 0.9%, from 0.7% in the preceding month. Analysts had expected Euro zone CPI to rise to 0.8% last month.
- Ministry of Statistics and Programme Implementation** said that Indian GDP rose to a seasonally adjusted 4.8%, from 4.4% in the preceding quarter. Analysts had expected Indian GDP to rise to 4.6% last quarter.
- Statistics Canada said that** GDP rose to a seasonally adjusted 0.3%, from 0.3% in the preceding month. Analysts had expected GDP to rise 0.1% last month.

Economic Calendar					
	Monday 2-Dec	Tuesday 3-Dec	Wednesday 4-Dec	Thursday 5-Dec	Friday 6-Dec
US	ISM Manufacturing PMI , ISM Manufacturing Prices , Construction Spending m/m .	Fed Chairman Nomination Vote , IBD/TIPP Economic Optimism , Total Vehicle Sales .	ADP Non-Farm Employment Change , ISM Non-Manufacturing PMI , New Home Sales , Crude Oil Inventories , Beige Book .	Prelim GDP q/q , Unemployment Claims , Challenger Job Cuts y/y , Factory Orders m/m .	Non-Farm Employment Change , Unemployment Rate , Average Hourly Earnings m/m , Core PCE Price Index m/m , Personal Spending m/m .
UK/EURO ZONE	Manufacturing PMI , Italian Manufacturing PMI , Spanish Manufacturing PMI , Spanish 10-y Bond Auction .	Spanish Unemployment Change , Halifax HPI m/m , Construction PMI , Construction PMI , 10-y Bond Auction , 30-y Bond Auction .	Spanish Services PMI , Italian Services PMI , Final Services PMI , Services PMI , Retail Sales m/m , Inflation Report Hearings , German 30-y Bond Auction .	German 10-y Bond Auction , Spanish 10-y Bond Auction , Asset Purchase Facility , Official Bank Rate , MPC Rate Statement , ECB Press Conference , Minimum Bid Rate , ECB Press Conference .	French 10-y Bond Auction , Consumer Inflation Expectations , German Factory Orders m/m , Employment Change , Unemployment Rate .
INDIA	Auto sales no .HSBC manufacturing PMI data		HSBC India Services PMI , HSBC India Composite PMI.		

Risk Disclosure & Disclaimer :This report/message is for the personal information of the authorized recipient and does not construe to be any investment, legal or taxation advice to you. Narnolia Securities Ltd. (Hereinafter referred as NSL) is not soliciting any action based upon it. This report/message is not for public distribution and has been furnished to you solely for your information and should not be reproduced or redistributed to any other person in any form. The report/message is based upon publicly available information, findings of our research wing “Eastwind” & information that we consider reliable, but we do not represent that it is accurate or complete and we do not provide any express or implied warranty of any kind, and also these are subject to change without notice. The recipients of this report should rely on their own investigations, should use their own judgment for taking any investment decisions keeping in mind that past performance is not necessarily a guide to future performance & that the the value of any investment or income are subject to market and other risks. Further it will be safe to assume that NSL and /or its Group or associate Companies, their Directors, affiliates and/or employees may have interests/positions, financial or otherwise, individually or otherwise in the recommended/mentioned securities/mutual funds/ model funds and other investment products which may be added or disposed including & other mentioned in this report/message.