

SGX NIFTY : 8005.5 ( 20.5 Pt Up )

**Quote of the Day**

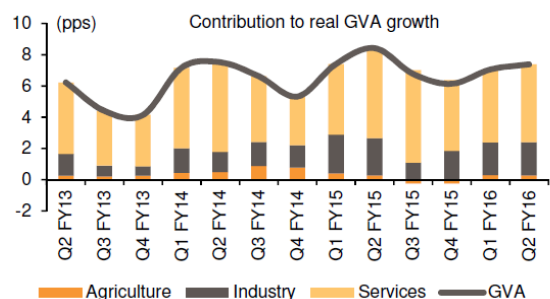
"Abnormally good or abnormally bad conditions do not last forever. This is true not only of general business but of particular industries as well. Corrective forces are often set in motion which tend to restore profits where they have disappeared, or to reduce them where they are excessive in relation to capital."

Benjamin Graham

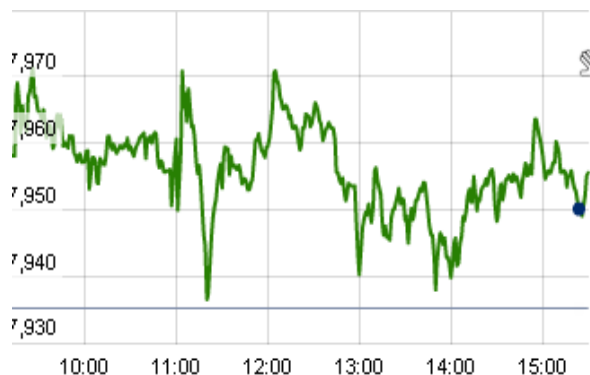
**Chart of the Day**

**Real GDP growth improved to 7.4% in Q2 FY16**

Exhibit 2: Real GDP growth improved to 7.4% in Q2 FY16



**Index Action Nifty ( 30th Nov 15 )**



**Index**

Contents	Page	Coverage
News	2	Update
Economic Calendar	3	Update

**Market**

Name	Value	Change
Sensex	26,169.41	23.74
Nifty	7954.90	19.65
DOW	17,762.50	(32.50)
NASDAQ	5,156.31	47.64
CAC	4,947.36	(10.24)
DAX	11,374.05	(8.18)
FTSE	6,389.00	32.91
NIKKIE	20,012.40	264.93
HANG SENG	22,381.35	384.93
EW ALL SHARE	13938.99	62.13

**Institutional Turnover**

**FII**

Investor	Buy(Cr.)	Sale(Cr.)	Net(Cr.)
1-Dec-15	4097.82	4204.60	(106.78)
Dec,15	4097.82	4204.60	(106.78)
2015	1046930.27	1059831.37	(12901.10)

**DII**

Investor	Buy(Cr.)	Sale(Cr.)	Net(Cr.)
1-Dec-15	1337.74	1142.99	194.75
Dec,15	1337.74	1142.99	194.75
2015	424588.84	367055.36	57533.48

**Commodity Price**

Commodity/Currencies	Value	
GOLD	24977.00	↓
SILVER	33300.00	↓
CRUDEOIL	41.81	
COPPER	310.35	↑
NATURALGAS	148.30	↓
DOLLAR/RS.	66.49	↓
EURO/RS.	70.63	↑
POUND/RS.	100.24	↑

## Market Snapshot

### Top Price Performers

Top Performers 1D	% Change	Top Performers 1W	% Change	Top Performers 1M	% Change
JUBLINDS	20.00	HANUNG	61.74	BLKASHYAP	97.67
ADHUNIK	20.00	MEGASOFT	61.28	KINETICENG	89.38
MUNJALAU	19.99	ICSA	56.81	KSERASERA	86.67
ARTSONENGG	19.98	PARSVNATH	44.97	MUDRA	86.00
FACT	19.86	ZYLOG	44.87	ALLSEC	81.93

Worst Performers 1D	% Change	Worst Performers 1W	% Change	Worst Performers 1M	% Change
BIRLACOT	(16.67)	SUDAR	(24.86)	SHILPAMED	(51.08)
SUJANAUNI	(11.95)	TREEHOUSE	(23.82)	SUDAR	(47.20)
COMFINTE	(10.68)	JAIBALAJI	(20.03)	ABGSHIP	(42.36)
SMPL	(9.80)	MAWANASUG	(18.19)	JAIBALAJI	(39.11)
PRITI	(9.64)	RENUKA	(18.18)	PRITI	(38.52)

### Top News

**Wockhardt Ltd** has undergone recently an inspection at its L1-Chikalhana, Aurangabad manufacturing facility by UK MHRA and have received a communication confirming the closure of the inspection and issuance of an unrestricted GMP certificate.

**Ashoka Buildcon Ltd** has announced that its subsidiary viz. Ashoka Concessions Limited, has received balance / last tranche of investment of Rs. 16 Crore, from Macquarie SBI Infrastructure Investments Pte Ltd. (MSIPL) and SBI Macquarie Infrastructure Trust (SMIT). Ashoka Concessions Limited (ACL) has received total investment of Rs. 800 Crore as per Shareholders Agreement executed among the Company, ACL, MSIPL and SMIT in the year 2012.

**Emami Paper Mills Ltd** says that the company is investing Rs.1,000 crore to double the capacity of its paperboard unit at Balgopalpur, near balasore in Orissa, in the next three years.

**NHPC Ltd** has signed Memorandum of Understanding has been signed on September 30, 2015 between NHPC Limited and Solar Energy Corporation of India (SECI) for development of 250MW Grid connected Solar Projects in India by NHPC on ownership basis in a time frame of 5 years. in association with SECI.

**Yes Bank** has signed an agreement with the Overseas Private Investment Corporation (OPIC), the U.S. Government's Development Finance Institution, for debt financing of \$245 million to increase lending to micro, small and medium enterprises (MSMEs) in India. U.S.-based lender Wells Fargo Bank, N.A. will act as sponsor and co-lender to the project, providing a loan of \$20 million, bringing the total facility amount to \$265 million.

**Dena Bank** said it will hold board meeting on 3 December to consider raising tier I capital up to an amount of Rs.1,500 crore, tier 2 capital up to an amount of Rs.1,000 crore and to consider raising equity capital of the bank by diluting government holding up to 52%, on obtaining necessary approvals.

**Jubilant Life Sciences Ltd** said that it has received ANDA approval for paroxetine tablets.

Modi-led government will soon start an Electronics Development Fund with a corpus of Rs 10,000 crore to provide financial assistance to domestic companies in the field of electronics manufacturing and encourage innovation in the sector.

Pharma firm, Alkem Laboratories has fixed the price band between Rs 1,020 and Rs 1,050 for its initial public offer (IPO), which will hit the capital markets on December 8. The IPO, which will close on December 10, would be made through an offer of sale of up to 1.28 crore equity shares representing 10.75 per cent stake by the promoters. The company has fixed the price band from Rs 1,020 to Rs 1,050 per equity share. At the lower price band, it would raise Rs 1,300 crore and would garner Rs 1,350 crore at the upper price band.

China's National Bureau of Statistics' official Purchasing Managers' Index (PMI) hit 49.6 in November, its lowest reading since August 2012 and down from the previous month's reading of 49.8. This was below a Reuters poll forecast of 49.8 and marked the fourth straight month of contraction in the sector.

The Markit/Nikkei Japan Final Manufacturing Purchasing Managers Index (PMI) was a seasonally adjusted 52.6 in November, a touch below the flash reading of 52.8 but still higher than a final 52.4 in the previous month. The index remained above the 50 threshold that separates expansion from contraction for the seventh straight month. November's figure was the highest since March 2014.

The International Monetary Fund agreed to add the Chinese yuan to its reserve currency basket. The decision — which marks another step in China's global economic emergence — came after the IMF evaluated the Asian nation's standing as an exporter and the yuan's role as a "freely usable" currency. In a statement, IMF Managing Director noted the yuan's inclusion is a "clear representation of the reforms" taking place in China.

### Economic Calendar

Country	Monday 30th Nov 15	Tuesday 1st Dec 15	Wednesday 2th Dec 15	Thursday 3th Dec 15	Friday 4th Dec 15
<b>US</b>	Pending Home Sales m/m	ISM Manufacturing PMI , Construction Spending m/m , FOMC Member Evans Speaks .	ADP Non-Farm Employment Change , Fed Chair Yellen Speaks , Revised Nonfarm Productivity q/q .	Unemployment Claims , Fed Chair Yellen Testifies , ISM Non-Manufacturing PMI	Average Hourly Earnings m/m , Non-Farm Employment Change , Unemployment Rate
<b>UK/EURO ZONE</b>	German Retail Sales m/m , German Prelim CPI m/m , Net Lending to Individuals m/m	Bank Stress Test Results , BOE Financial Stability R eport , Spanish Manufacturing PMI , German Unemployment Change .	Spanish Unemployment Change , Construction PMI , Core CPI Flash Estimate y/y	Services PMI , Minimum Bid Rate , ECB Press Conference .	German Factory Orders m/m ,
<b>INDIA</b>		Auto Sales No . HSBC Manufacturing PMI No			

## Narnolia Securities Ltd.

### Narnolia Research Lab

Stellar IT Park | 5th Floor | Office Space No. 6 | Tower-II and Plot No. C-25 | Sector-62 |  
Noida | Ph : 0120-4215110

### Central Strategy Desk - Kolkata

124 | 1st Floor | 7/1 Lords Sinha Road | Kolkata - 71  
Ph : 033-22821500 | M : 93347 14418, 98302 69810