

SGX NIFTY : 8159 ( 54 Pt Down)

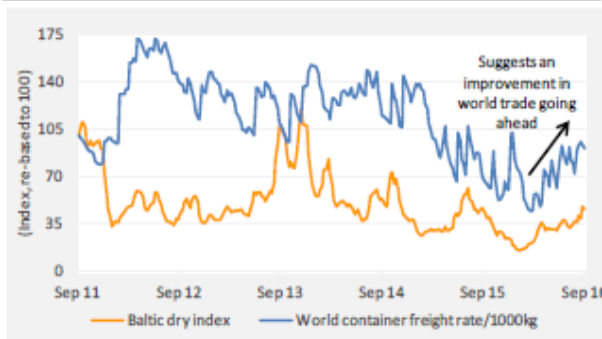
### Quote of the Day

Acquire worldly wisdom and adjust your behavior accordingly. If your new behavior gives you a little temporary unpopularity with your peer group...then to hell with them."

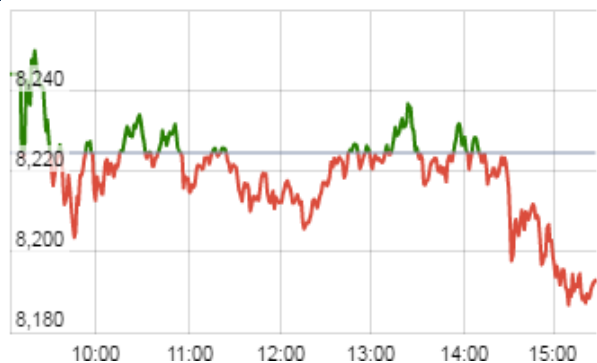
Charlie Munger

### Chart of the Day

#### Baltic Dry Index



### Index Action Nifty ( 1th Dec 16 )



### Index

Contents	Page	Coverage
News	2	Update
Economic Calendar	3	Update

### Market

Name	Value	Change
Sensex	26,559.92	(92.89)
Nifty	8192.90	(31.60)
DOW	19,183.59	(61.91)
NASDAQ	5,247.32	(76.36)
CAC	4,560.61	(17.73)
DAX	10,534.05	(106.35)
FTSE	6,752.93	(30.86)
NIKKEI	18,402.63	(110.69)
HANG SENG	22,700.11	(178.12)
EW ALL SHARE	14805.90	(88.83)

### Instituional Turnover

#### FII

Investor	Buy(Cr.)	Sale(Cr.)	Net(Cr.)
01-Dec-16	3499.65	3902.27	(402.62)
Dec-16	41247.38	42941.67	(1694.29)
2016	829715.60	806557.00	23158.60

#### DII

Investor	Buy(Cr.)	Sale(Cr.)	Net(Cr.)
01-Dec-16	2997.27	2320.59	676.68
Dec-16	24684.99	21744.55	2940.44
2016	359830.34	357749.74	2080.60

### Commodity Price

Commodity/Currencies	Value	
GOLD	28598.00	↓
SILVER	40498.00	↓
CRUDEOIL	51.17	↑
COPPER	378.30	↑
NATURALGAS	220.10	↑
DOLLAR/RS.	68.46	↓
EURO/RS.	72.55	↑
POUND/RS.	85.46	↑

## Market Snapshot

### Top Price Performers

Top Performers 1D	% Change	Top Performers 1W	% Change	Top Performers 1M	% Change
PARRYSUGAR	19.95	TVSELECT	39.50	TVSELECT	64.24
PATELENG	19.94	PRATIBHA	33.46	PNBGILTS	44.24
HCC	19.88	LOTUSEYE	32.41	PIXTRANS	39.67
BALKRISIND	19.70	BALKRISIND	28.28	SRSREAL	35.11
SUNDARAM	16.55	CHAMANSEQ	27.44	ANDHRAPET	34.80

Worst Performers 1D	% Change	Worst Performers 1W	% Change	Worst Performers 1M	% Change
ISIBARS	(9.89)	PRAKASHCON	(16.74)	ENERGYDEV	(68.12)
BARTRONICS	(9.00)	SUDARSCHM	(13.79)	PRAKASHCON	(65.47)
INTLCONV	(8.54)	ADANITRANS	(13.25)	SUNILHITEC	(47.60)
TREEHOUSE	(7.80)	RESPONIND	(11.44)	GODFRYPHLP	(33.52)
PNC	(7.62)	ENERGYDEV	(10.35)	CURATECH	(32.82)

## Top News

### • BALKRISIND concall 2QFY17:

Volume guidance of 160000-170000 MT

Anti dumping verdict to come by 15th February 2017.

Management focus is towards increasing capacity utilisation.

Overall capacity utilisation is 60%; current capacity utilisation in Bhuj plant is 45%.

RM cost will increase going ahead looking at the rising commodity prices.

Tax rate 30% for 2HFY17

Global market share is 4%; plans to take it 7% in next 2-3 years

No price hike as of now but there will be a hike based on commodity price increase.

No capacity expansion plans going ahead

By FY19 the company would be debt free

US economy is showing good sign of improvement; UK have seen good growth during the quarter. Europe remain a concern.

India contributes 15% of total revenues.

Euro rate for 2HFY17 would be Rs.75-76.

### • Mgt Int : JKTYRE

>>CV sales steady but drop in cars, 2-wheelers visible: JK Tyre

>>From an industry perspective the Co. haven't seen an impact of demonetisation on tyre demand in commercial vehicle segment but only in passenger car and two-wheelers.

>>The impact on transporters has not been much because they are allowed to use old notes for fuel and movement but drivers have been resisting long-distance transporting.

>>commercial vehicle owners are not buying tyres on cash but are buying through regular relationship dealers.

>>Replacement demand in commercial vehicles has not been hit.

• **IndusInd Bank** will raise Rs 1,500 crore by issuing bonds on private placement basis. The bank proposes to raise funds by issue and allotment of senior unsecured redeemable non-convertible long term bonds in the nature of debentures for face value of Rs 10 lakh each for cash aggregating to Rs 1,500 crore on private placement basis

• **Suzlon Group** has bagged a 63-mw wind power project order from Tehri Hydro Development Corporation of India Ltd (THDCIL).

The order comprises installation of 30 units of S97 120m Hybrid Tower with a rated capacity of 2.1 mw each

The project is capable of powering over 35,000 households and offsetting 0.13 million tonnes of CO2 emissions per annum.

• Canada-based asset management company Brookfield is in exclusive talks to buy majority stake in Bharti Infratel . The firm is likely to bid at around Rs 400 per share for the majority stake in the telecom tower infrastructure provider.

• **Dr.Reddy's Laboratories Ltd** announced today that it has partnered with cycle company Cykul to launch cycle sharing programme here. Dr.Reddy's Redibike, as the programme would be known, opens with a fleet of 400 "robust and easy to ride" cycles that are available at 10 stations

• **Eurostat said** that the rate of unemployment fell to a seasonally adjusted 9.8%, from 9.9% in the preceding month whose figure was revised down from 10.0%.

• **Italian GDP** rose to 0.3%, from 0.3% in the preceding month. Analysts had expected Italian GDP to rise 0.3% last month.

• **Markit's final manufacturing Purchasing Managers' Index** for the euro zone chalked up its highest reading since January 2014 in November, registering 53.7, in line with an earlier flash estimate and ahead of October's 53.5. Anything above 50 indicates growth.

• **Euro zone core CPI** remained unchanged at a seasonally adjusted annual rate of 0.8%, from 0.8% in the preceding month. Analysts had expected Euro zone core CPI to remain unchanged at 0.8% last month.

## Result Calendar Q2FY17

BSE Code	Company Name	Date	BSE Code	Company Name	Date
533271	ASHOKA	02-Dec-16	523638	IPRINGLTD	07-Dec-16
532930	BGREENERGY	02-Dec-16	539150	PNCINFRA	07-Dec-16
523618	DREDGECORP	02-Dec-16	533274	PRESTIGE	07-Dec-16
540153	ENDURANCE	02-Dec-16	533288	CLARIS	08-Dec-16
532309	GEPIL	02-Dec-16	500940	FINOLEXIND	08-Dec-16
532957	GOKAKTEX	02-Dec-16	532786	GTOFFSHORE	08-Dec-16
509073	HATHWAYB	02-Dec-16	513377	MMTC	08-Dec-16
533177	IL&FSTRANS	02-Dec-16	500113	SAIL	08-Dec-16
500201	INDIAGLYCO	02-Dec-16	526807	SEAMECLTD	08-Dec-16
539041	MAHABIR	02-Dec-16	533227	AHLEAST	09-Dec-16
539917	NAGARFERT	02-Dec-16	517300	GIPCL	09-Dec-16
532780	PARSVNATH	02-Dec-16	532778	LITL	09-Dec-16
539302	POWERMECH	02-Dec-16	532891	PURVA	09-Dec-16
532515	TVTODAY	02-Dec-16	533206	SJVN	09-Dec-16
523890	DSKULKARNI	03-Dec-16	534756	TARAJEWELS	09-Dec-16
523574	FEL	03-Dec-16	500128	ELECTCAST	10-Dec-16
532924	KOLTEPATIL	03-Dec-16	515145	HINDNATGLS	10-Dec-16
500459	PGHH	03-Dec-16	590072	SUNDRMBRAK	10-Dec-16
523838	SIMPLEXINF	03-Dec-16	500084	CESC	12-Dec-16
532904	SUPREMEINF	03-Dec-16	500093	CROMPGREAV	12-Dec-16
500023	ASIANHOTNR	05-Dec-16	532181	GMDCLTD	12-Dec-16
500102	BALLARPUR	05-Dec-16	512237	JAICORPLTD	12-Dec-16
500830	COLPAL	05-Dec-16	531882	KWALITY	12-Dec-16
534597	RTNINFRA	05-Dec-16	539126	MEP	12-Dec-16
533122	RTNPOWER	05-Dec-16	521070	ALOKTEXT	13-Dec-16
532051	SWELECTES	05-Dec-16	533278	COALINDIA	13-Dec-16
500117	DCW	06-Dec-16	513599	HINDCOPPER	13-Dec-16
540064	FRETAIL	06-Dec-16	526622	MFLINDIA	13-Dec-16
524602	SHIVMED	06-Dec-16	500338	PRISMCEM	13-Dec-16
532348	SUBEX	06-Dec-16	533152	MBLINFRA	14-Dec-16
500336	SURYAROSNI	06-Dec-16	500108	MTNL	14-Dec-16
500013	ANSALAPI	07-Dec-16	509243	TVSSRICHAK	14-Dec-16
532754	GMRINFRA	07-Dec-16	524038	VENLONENT	31-Jan-17

## Earning Estimate Q2FY17

BSE CODE	NSE CODE	Sales Rs Cr	Sales YoY	Pat Rs Cr	PAT YoY
500830	COLPAL	1072.60	13.00	172.30	11.80
500459	PGHH	706.30	18.00	102.70	47.10
500093	CROMPGREAV	1363.00	(39.90)	29.30	LP
500113	SAIL	9657.90	4.30	(1219.00)	Loss
533106	OIL	2274.00	(5.20)	559.20	(17.10)
533274	PRESTIGE	1094.20	(9.10)	169.70	68.50
533278	COALINDIA	1618.99	(4.50)	127.61	(49.30)

Economic Calendar					
Country	Monday 28th Nov 16	Tuesday 29th Nov 16	Wednesday 30th Nov 16	Thursday 1st Dec 16	Friday 2nd Dec 16
US		Prelim GDP q/q , CB Consumer Confidence , Richmond Manufacturing Index , Prelim GDP Price Index q/q , S&P/CS Composite-20 HPI y/y .	ADP Non-Farm Employment Change , Core PCE Price Index m/m , Personal Spending m/m , Chicago PMI , Pending Home Sales m/m , Crude Oil Inventories	Unemployment Claims , ISM Manufacturing PMI , Final Manufacturing PMI , Construction Spending m/m.	Average Hourly Earnings m/m , Non-Farm Employment Change , Unemployment Rate.
UK/EURO ZONE	M3 Money Supply y/y , Private Loans y/y .	German Prelim CPI m/m , Spanish Flash CPI y/y , German Unemployment Change , BOE Financial Stability Report ,	German Retail Sales m/m , Net Lending to Individuals m/m , CPI Flash Estimate y/y , Core CPI Flash Estimate y/y.	Manufacturing PMI , Bank Stress Test Results , Spanish Manufacturing PMI , Italian Manufacturing PMI , French Final Manufacturing PMI .	Spanish Unemployment Change , Construction PMI , PPI m/m .
INDIA			GDP Growth Rate YoY.	Auto no, Nikkei Manufacturing PMI.	

**Risk Disclosure & Disclaimer :** This report/message is for the personal information of the authorized recipient and does not constitute to be any investment, legal or taxation advice to you. Narnolia Securities Ltd. (Hereinafter referred as NSL) is not soliciting any action based upon it. This report/message is not for public distribution and has been furnished to you solely for your information and should not be reproduced or redistributed to any other person in any form. The report/message is based upon publicly available information, findings of our research wing "East wind" & information that we consider reliable, but we do not represent that it is accurate or complete and we do not provide any express or implied warranty of any kind, and also these are subject to change without notice. The recipients of this report should rely on their own investigations, should use their own judgment for taking any investment decisions keeping in mind that past performance is not necessarily a guide to future performance & that the value of any investment or income are subject to market and other risks. Further it will be safe to assume that NSL and /or its Group or associate Companies, their Directors, affiliates and/or employees may have interests/ positions, financial or otherwise, individually or otherwise in the recommended/mentioned securities/mutual funds/model funds and other investment products which may be added or disposed including & other mentioned in this report/message. NSL or any of its affiliates or employees shall not be in any way responsible for any loss or damage that may arise to any person from any action taken based on the above information or inadvertent error in the information contained in this report/message.

# Narnolia

Advance Strategy · Simple Solutions

(Regn. No. : INP 000004011)

## Narnolia Securities Ltd.

### Narnolia Research Lab

Stellar IT Park | 5th Floor | Office Space No. 6 | Tower-II Ind Plot  
No. C-25 | Sector-62 | Noida | Ph : 0120-4215110

### Central Strategy Desk - Kolkata

201 | 2nd Floor | Marble Arch Building | 236B-AJC Bose Road  
Kolkata-700 020 , Ph : 033-40501500 |  
Email : research@narnolia.com | www.narnolia.com