

SGX NIFTY : 7820 ( 17 Pt Down)

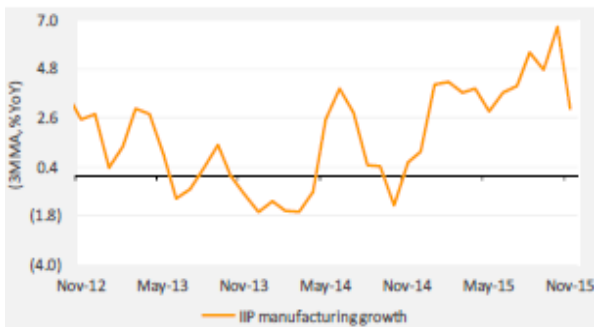
### Quote of the Day

"Although I consider myself to be primarily in the quantitative school, the really sensational ideas I have had over the years have been heavily weighted toward the qualitative side where I have had a 'high-probability insight'. This is what causes the cash register to really sing."

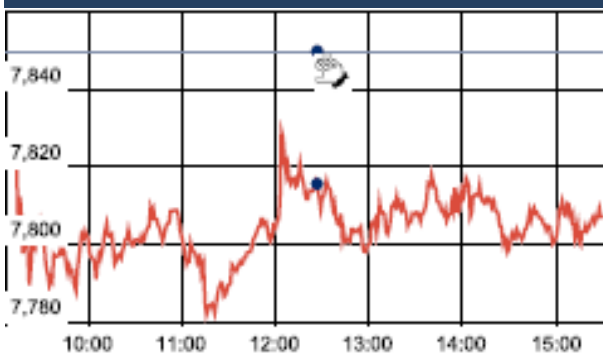
Warren Buffett

### Chart of the Day

#### IIP Trend



### Index Action Nifty ( 2th May 16 )



### Index

Contents	Page	Coverage
News	2	Update
Economic Calendar	3	Update

### Market

Name	Value	Change
Sensex	25,436.97	(169.65)
Nifty	7805.90	(43.90)
DOW	18,041.35	51.23
NASDAQ	4,817.59	42.23
CAC	4,442.75	13.79
DAX	10,123.27	84.23
FTSE	6,241.89	(80.51)
NIKKEI	16,147.38	(518.67)
HANG SENG	20,805.77	(261.28)
EW ALL SHARE	13619.95	4.08

### Instituional Turnover

#### FII

Investor	Buy(Cr.)	Sale(Cr.)	Net(Cr.)
02-May-16	2977.66	2542.73	434.93
May,16	21490.67	23275.91	(1785.24)
2016	92982.59	109123.84	(16141.25)

#### DII

Investor	Buy(Cr.)	Sale(Cr.)	Net(Cr.)
02-May-16	944.81	944.81	0.00
May,16	11630.08	11291.98	338.10
2016	53334.55	39898.76	13435.79

### Commodity Price

Commodity/Currencies	Value	
GOLD	30294.00	↑
SILVER	41271.00	↓
CRUDEOIL	45.24	↑
COPPER	335.95	↓
NATURALGAS	137.80	↓
DOLLAR/RS.	66.44	↑
EURO/RS.	76.51	↑
POUND/RS.	97.37	↑

## Market Snapshot

### Top Price Performers

Top Performers 1D	% Change	Top Performers 1W	% Change	Top Performers 1M	% Change
BLKASHYAP	19.99	DIAPOWER	73.09	MEGASOFT	87.38
EON	19.96	RMMIL	40.00	DIAPOWER	82.49
INVENTURE	19.79	LOKHSG	30.49	KIRIINDUS	80.78
CALSREF	16.67	JINDRILL	29.56	UTTAMSUGAR	74.23
FLATPROD	15.89	AMTEKINDIA	27.15	OISL	63.66

Worst Performers 1D	% Change	Worst Performers 1W	% Change	Worst Performers 1M	% Change
SRLTD	(13.31)	PRAKASHSTL	(21.93)	VIVIMEDLAB	(78.96)
TINPLATE	(12.03)	RAINBOWPAP	(21.53)	RAINBOWPAP	(53.97)
SURANAIND	(9.94)	ALCHEM	(20.87)	RICOHQ	(24.88)
PARACABLES	(8.55)	GODFRYPHLP	(20.48)	RMCL	(24.50)
SEZAL	(7.73)	SRLTD	(16.85)	GODFRYPHLP	(24.44)

## Top News

- Marico Mgt guideline** : Company expects over 8 percent volume growth for FY17. The company's margins, aided by low oil prices, will see some expansion in the first quarter of FY17, but will stabilise after that. For FY17, if monsoon is good and inflation remains low, then an upmove in urban and rural consumption will happen. This fiscal year will see higher value growth than the first half, he said, adding that some revision in pricing is expected in H2.
- Alembic Pharma** has received final approval from the US health regulator for Lacosamide tablets, used for treatment of partial-onset seizures. The company has received final approval from the US Food and Drug Administration (USFDA) for its Abbreviated New Drug Application (ANDA) for Lacosamide tablets, 50 mg, 100 mg, 150 mg and 200 mg. The product is generic version of drug firm UCB Inc's Vimpat tablets in the same strengths. The company was one of the first ANDA applicants to submit a substantially complete ANDA with a paragraph IV certification
- Suzlon group** announced that it commissioned 900 mw wind energy projects in the last fiscal. This amounts to a more than 100 percent increase in installations, vis-a-vis 442 mw installed during the financial year 2014-15. Suzlon continues to maintain market leadership in India with 36 percent cumulative market share and diversified presence across eight states
- Jyoti Structures Africa Pty**, subsidiary of Jyoti Structures, has been awarded contract worth of USD 50 mn for turnkey construction of 400/132 kV multiple circuit transmission line between Ariadne and Eros in Natal Province of South Africa, by ESKOM.
- ICICI Bank**  
 Bank puts Dunlop's Worli property on block to recover loans  
 Bank took over property after Ruia group cos defaulted on loans worth Rs 575 cr
- JSPL says** : Confident will stand vindicated at the end of the ongoing judicial process  
 Deny all allegations made against company & management  
 Amarkonda block allocation was made to company purely on merit
- Marksans Pharma** has announced that USFDA has granted approval for an Abbreviated New Drug Application (ANDA) for Metformin Hydrochloride extended-release tablets USP 500 mg and 750 mg. Metformin Hydrochloride ER tablets USP 500 mg and 750 mg is therapeutically equivalent to the reference listed drug Glucophage XR extended-release tablets 500mg and 750mg respectively of Bristol Myers Squibb (BMS).
- U.S. consumer sentiment** fell to a seasonally adjusted 89.0, from 89.7 in the preceding month. Analysts had expected UoM consumer sentiment to rise to 90.0 last month.
- Kingsbury International said that the Chicago PMI** fell to a seasonally adjusted 50.4, from 53.6 in the preceding month. Analysts had expected the Chicago PMI to fall to 53.0 last month.
- Chilean Unemployment Rate** rose to an annual rate of 6.3%, from 5.9% in the preceding month. Analysts had expected Chilean Unemployment Rate to rise to 6.1% last month.
- U.S. inflation barely** rose in March as consumer spending remained tepid, making it less likely that the Federal Reserve will be able to follow through on its projected two interest rate increases this year.
- German CPI fell to a seasonally adjusted** -0.2%, from 0.8% in the preceding month. Analysts had expected German CPI to fall -0.2% last month.
- German unemployment rate remained** unchanged at a seasonally adjusted 6.2%, from 6.2% in the preceding month. Analysts had expected German unemployment rate to remain unchanged at 6.2% last month.
- Swedish Retail Sales fell to a seasonally adjusted** -0.7%, from 0.1% in the preceding month whose figure was revised up from -0.2%. Analysts had expected Swedish Retail Sales to rise 0.5% last month.

**Result Calendar Q4FY16**

BSE Code	Company Name	Date	BSE Code	Company Name	Date
532921	ADANIPOINTS	03-May-16	535754	ORIENTCEM	04-May-16
533096	ADANIPOWER	03-May-16	533228	SKSMICRO	04-May-16
522275	ALSTOMT&D	03-May-16	532513	TVSELECT	04-May-16
500042	BASF	03-May-16	520113	VESUVIUS	04-May-16
509438	BENARAS	03-May-16	532953	VGUARD	04-May-16
500040	CENTURYTEX	03-May-16	524348	AARTIDRUGS	05-May-16
532443	CERA	03-May-16	534612	AMTL	05-May-16
531199	GLANCE	03-May-16	539637	BVL	05-May-16
532424	GODREJCP	03-May-16	500870	CASTROLIND	05-May-16
517077	INDAGIV	03-May-16	505200	EICHERMOT	05-May-16
538835	INTELLECT	03-May-16	531162	EMAMILTD	05-May-16
511208	IVC	03-May-16	500620	GESHIP	05-May-16
509715	JAYSHREETA	03-May-16	507815	GILLETTE	05-May-16
532621	MORARJEE	03-May-16	533150	GODREJPROP	05-May-16
500290	MRF	03-May-16	500182	HEROMOTOCO	05-May-16
523558	NETWORK	03-May-16	509675	HIL	05-May-16
532698	NITINSPIN	03-May-16	509635	HINDCOMPOS	05-May-16
532481	NOIDATOLL	03-May-16	532636	IIFL	05-May-16
532690	RAMSARUP	03-May-16	511473	INDBANK	05-May-16
534618	SAL	03-May-16	523465	INDBNK	05-May-16
539252	SCFL	03-May-16	500211	INSILCO	05-May-16
536666	SFCL	03-May-16	500458	KORE	05-May-16
532638	SHOPERSTOP	03-May-16	534091	MCX	05-May-16
520086	SICAL	03-May-16	539767	MNIL	05-May-16
531863	SIGRUN	03-May-16	532529	NDTV	05-May-16
504973	TUBEINVEST	03-May-16	500730	NOCIL	05-May-16
532343	TVSMOTOR	03-May-16	500459	PGHH	05-May-16
500254	UTTAMVALUE	03-May-16	532419	SMARTLINK	05-May-16
532268	ACCELYA	04-May-16	524727	SPANDIAQ	05-May-16
512599	ADANIENT	04-May-16	504959	STOVACQ	05-May-16
516020	AGIOPAPER	04-May-16	533200	TALWALKARS	05-May-16
590122	ASHIKACR	04-May-16	512297	WHELTEX	05-May-16
533138	ASTEC	04-May-16	590013	XPROINDIA	05-May-16
502352	AURANPAP	04-May-16	532404	7TEC	06-May-16
513375	CARBORUNIV	04-May-16	524208	AARTIIND	06-May-16
500280	CENTENKA	04-May-16	590006	AMRUTANJAN	06-May-16
523100	COSMOFE	04-May-16	532475	APTECHT	06-May-16
511072	DHFL	04-May-16	508933	AYMSYNTEX	06-May-16
532129	HEXAWARE	04-May-16	522004	BATLIBOI	06-May-16
509895	HINDMILL	04-May-16	530803	BHAGIL	06-May-16
539337	HKT	04-May-16	500335	BIRLACORPN	06-May-16
524648	INDOAMIN	04-May-16	532974	BIRLAMONEY	06-May-16
504786	INVPRECQ	04-May-16	501833	CHOWGULSTM	06-May-16
532286	JINDALSTEL	04-May-16	533288	CLARIS	06-May-16
502157	MANGLMCEM	04-May-16	520081	ECSTSTL	06-May-16
504112	NELCO	04-May-16	517477	ELNET	06-May-16
531209	NUCLEUS	04-May-16	539844	EQUITAS	06-May-16

531508	EVEREADY	06-May-16	530063	YASHRAJC	09-May-16
532657	FACORSTE	06-May-16	505665	ABCBEARS	10-May-16
532312	GEOMETRIC	06-May-16	517041	ADORWELD	10-May-16
501455	GREAVESCOT	06-May-16	505010	AUTOAXLES	10-May-16
524735	HIKAL	06-May-16	532548	CENTURYPLY	10-May-16
539083	INOXWIND	06-May-16	500241	KIRLOSIBROS	10-May-16
532162	JKPAPER	06-May-16	532899	KSCL	10-May-16
532642	JSWHL	06-May-16	511728	KZLFIN	10-May-16
532714	KEC	06-May-16	521018	MARALOVER	10-May-16
505890	KENNAMET	06-May-16	523828	MENONBE	10-May-16
530011	MANGCHEFER	06-May-16	530173	OSCARGLO	10-May-16
538964	MERCURYLAB	06-May-16	509820	PAPERPROD	10-May-16
532541	NIITTECH	06-May-16	532497	RADICO	10-May-16
520021	OMAXAUTO	06-May-16	535322	REPCOHOME	10-May-16
502420	ORIENTPPR	06-May-16	503229	SIMPLXREA	10-May-16
500680	PFIZER	06-May-16	500472	SKFINDIA	10-May-16
500339	RAIN	06-May-16	505192	SMLISUZU	10-May-16
500111	RELCAPITAL	06-May-16	539353	SWARAJAUTO	10-May-16
501154	ROSEI	06-May-16	532812	TFL	10-May-16
500550	SIEMENS	06-May-16	519373	VIMALOIL	10-May-16
533018	SIMPLXMIL	06-May-16	509055	VISAKAIND	10-May-16
533019	SIMPLXPAP	06-May-16	507892	WINSOMEDJ	10-May-16
532872	SPARC	06-May-16	500877	APOLLTYRE	11-May-16
500114	TITAN	06-May-16	500820	ASIANPAINT	11-May-16
533252	WELINV	06-May-16	514045	BSL	11-May-16
505533	WESTLIFE	06-May-16	500085	CHAMBLFERT	11-May-16
532300	WOCKPHARMA	06-May-16	520131	COARO	11-May-16
512245	ZNIVITRD	06-May-16	519588	DFM	11-May-16
511724	BALFC	07-May-16	517354	HAVELLS	11-May-16
500300	GRASIM	07-May-16	500247	KOTAKBANK	11-May-16
524669	HESTERBIO	07-May-16	509220	PTL	11-May-16
524330	JAYAGROGN	07-May-16	539678	QUICKHEAL	11-May-16
539251	NIRVIKARA	07-May-16	500350	RSWM	11-May-16
511632	OLYMTFI	07-May-16	532218	SOUTHBANK	11-May-16
517500	ROTO	07-May-16	532782	SUTLEJTEX	11-May-16
519091	TASTYBIT	07-May-16	533553	TDPOWERSYS	11-May-16
522122	VOITHPAPR	07-May-16	514142	TTL	11-May-16
512161	8KMILES	09-May-16	503960	BBL	12-May-16
506401	DEEPAKNI	09-May-16	500124	DRREDDY*	12-May-16
505982	HINDUJAFO	09-May-16	532809	FSL	12-May-16
500696	HINDUNILVR	09-May-16	532296	GLENMARK	12-May-16
536868	INTELSOFT	09-May-16	509488	GRAPHITE	12-May-16
519570	LAKSHMIO	09-May-16	500189	HINDUJAVEN	12-May-16
526179	LUDLOWJUT	09-May-16	509496	ITDCM	12-May-16
522241	MMFL	09-May-16	523207	KOKUYOCLN	12-May-16
523874	PRECISION	09-May-16	531213	MANAPPURAM	12-May-16
513605	SRIPIPES	09-May-16	500126	MERCK	12-May-16
532410	TRANSCOR	09-May-16	534184	NAGAROIL	12-May-16
532893	VTMLTD	09-May-16	500790	NESTLEIND	12-May-16

532254	POLARIS	12-May-16	532524	PTC	18-May-16
521194	SILINV	12-May-16	507966	RASRESOR	18-May-16
520056	SUNCLAYLTD	12-May-16	501423	SHAILY	18-May-16
521064	TRIDENT	12-May-16	524212	WANBURY	18-May-16
531846	TRINITYLEA	12-May-16	532173	CYBERTECH	19-May-16
500231	UMANGDAIR	12-May-16	532526	DISHMAN	19-May-16
531335	ZYDUSWELL	12-May-16	500133	ESABINDIA	19-May-16
526955	ABLBIO	13-May-16	532835	ICRA	19-May-16
532321	CADILAHC	13-May-16	505750	JOSTS	19-May-16
526483	EDUEXEL	13-May-16	524037	RAMAPHO	19-May-16
505893	HINDHARD	13-May-16	532988	RANEENGINE	19-May-16
533177	IL&FSTRANS	13-May-16	531088	TULIPSTA	19-May-16
524378	JMDEPACKR	13-May-16	533023	WABCOINDIA	19-May-16
523405	JMFINANCIL	13-May-16	500303	ABIRLANUVO	20-May-16
512147	KAJALSY	13-May-16	513117	AMFORG	20-May-16
524699	KILBURNC	13-May-16	500038	BALRAMCHIN	20-May-16
526947	LAOPALA	13-May-16	500825	BRITANNIA	20-May-16
512505	MEENST	13-May-16	590043	HARITASEAT	20-May-16
532340	OMNIAX	13-May-16	505737	INTLCOMBQ	20-May-16
506590	PHILIPCARB	13-May-16	506943	JBCHEPHARM	20-May-16
531768	POLYMED	13-May-16	532652	KTKBANK	20-May-16
507649	RASOI	13-May-16	517344	MINDTECK	20-May-16
520057	SONASTEER	13-May-16	524558	NEULANLAB	20-May-16
524488	SVCSUPE	13-May-16	500260	RAMCOCEM	20-May-16
532390	TAJGVK	13-May-16	532369	RAMCOIND	20-May-16
533170	TAMBOLI	13-May-16	532661	RML	20-May-16
512303	ZMANSOON	13-May-16	500403	SUNDRMFAST	20-May-16
512004	ZNILKENG	13-May-16	522113	TIMKEN	20-May-16
534742	ZUARI	13-May-16	506690	UNICHEMLAB	20-May-16
500780	ZUARIGLOB	13-May-16	526775	VALIANT	20-May-16
532166	ALKASEC	14-May-16	533470	RUSHIL	21-May-16
530829	CILSEC	14-May-16	521240	SAMBANDAM	21-May-16
526821	DAICHI	14-May-16	519552	HERITGFOOD	23-May-16
532133	IFGLREFRAC	14-May-16	500266	MAHSCOOTER	23-May-16
590130	KANCOTEA	14-May-16	532987	RBL	23-May-16
530443	KIRANSY-B	14-May-16	521234	SRINACHA	23-May-16
530517	RELAXO	14-May-16	500400	TATAPOWER	23-May-16
504398	SJCORP	14-May-16	532978	BAJAFINSV	24-May-16
500412	TIRUMALCHM	14-May-16	500034	BAJFINANCE	24-May-16
534309	NBCC	16-May-16	523736	DPL	24-May-16
523628	PODDAR	16-May-16	500170	GTNINDS	24-May-16
532725	SOLARINDS	16-May-16	500262	MAFATLAFIN	24-May-16
514215	BINNY	17-May-16	523642	PIIND	24-May-16
500676	GSKCONS	17-May-16	519230	RICHIRICH	24-May-16
517334	MOTHERSUMI	17-May-16	502180	SHREDIGCEM	24-May-16
500337	PRIMESECU	17-May-16	590072	SUNDRMBRAK	24-May-16
517562	TRIGYN	17-May-16	538268	WONDERLA	24-May-16
532485	BLIL	18-May-16	519174	ASHAI	25-May-16
500228	JSWSTEEL	18-May-16	506820	ASTRAZEN	25-May-16

532977	BAJAJ-AUTO	25-May-16	506655	SUDARSCHEM	27-May-16
500490	BAJAJHLDNG	25-May-16	512101	TRIPR	27-May-16
500660	GLAXO	25-May-16	506685	ULTRAMAR	27-May-16
500164	GODREJIND	25-May-16	519500	BKV	28-May-16
533217	HMVL	25-May-16	508939	BLCISER	28-May-16
500252	LAXMIMACH	25-May-16	530859	COSBOARD	28-May-16
532777	NAUKRI	25-May-16	538319	GCMCAPI	28-May-16
500338	PRISMCEM	25-May-16	500202	INDLEASE	28-May-16
530073	SANGHVIMOV	25-May-16	511092	JMDTELEFILM	28-May-16
517320	SAVINFOCO	25-May-16	530421	KUWERIN	28-May-16
519234	SIEL	25-May-16	506079	LAKPRE	28-May-16
526827	SPICEISL	25-May-16	517449	MAGNAELQ	28-May-16
533158	THANGAMAYL	25-May-16	532865	MEGH	28-May-16
500411	THERMAX	25-May-16	501343	MOTOGENFIN	28-May-16
532515	TVTODAY	25-May-16	530557	NCLRESE	28-May-16
523319	BALMLAWRIE	26-May-16	533202	NITESHEST	28-May-16
514440	BPTEX	26-May-16	532503	RAJPALAYAM	28-May-16
534804	CARERATING	26-May-16	524038	VENLONENT	28-May-16
500144	FINCABLES	26-May-16	509038	VOLLF	28-May-16
517300	GIPCL	26-May-16	531047	ADVPOWER	30-May-16
532662	HTMEDIA	26-May-16	532888	ASIANILES	30-May-16
539276	KAYA	26-May-16	509480	BERGEPAIN	30-May-16
526299	MPHASIS	26-May-16	511607	BIRSHLEDU	30-May-16
500387	SHREECEM	26-May-16	531175	BLSINFOTE	30-May-16
516108	STHINPA	26-May-16	500067	BLUESTARCO	30-May-16
531652	THIRDFIN	26-May-16	531458	BOSTONBIO	30-May-16
500414	TIMEX	26-May-16	539131	CLLIMITED	30-May-16
509910	ZSOUTGAS	26-May-16	507833	COMPUPN	30-May-16
500103	BHEL	27-May-16	531270	DAZZEL	30-May-16
506315	BORAX	27-May-16	531306	DHPIND	30-May-16
532783	DAAWAT	27-May-16	535917	GCMCOMM	30-May-16
506405	DHARAMSI	27-May-16	535431	GCMSECU	30-May-16
522261	DOLPHINOFF	27-May-16	530263	GLOBALCA	30-May-16
507794	KHAICHEM	27-May-16	531608	GORANIN	30-May-16
523248	MACPLASQ	27-May-16	531737	GREENCREST	30-May-16
531049	NEELKAN	27-May-16	511543	GSBFIN	30-May-16
500346	PUNJCOMMU	27-May-16	514386	GUJCOTEX	30-May-16
505800	RANEHOLDIN	27-May-16	524754	GUJMEDI	30-May-16
526161	SPENTA	27-May-16	526779	HINAFIL	30-May-16

532851	INSECTICID	30-May-16	514332	NEOINFRA	30-May-16
538422	JACKSON	30-May-16	531779	PADALPO	30-May-16
526558	JAMEHOT	30-May-16	535514	PRIMECAPM	30-May-16
530405	JINDCAP	30-May-16	512099	PUNITCO	30-May-16
535730	KHOBSURAT	30-May-16	530125	SAMRATPH	30-May-16
524280	KOPRAN	30-May-16	526532	SFPIL	30-May-16
539446	KRISHFAB	30-May-16	531411	TUNITEX	30-May-16
531164	LADIAMO	30-May-16	521226	UNIROYAL	30-May-16
506113	LIFELINE	30-May-16	531831	UNISH	30-May-16
531319	MARUTISE	30-May-16	531762	UNJHAFOR	30-May-16
523197	MAZDAPR	30-May-16	539123	VBIND	30-May-16
532307	MELSTAR	30-May-16	530401	VINYOFL	30-May-16
526251	MIDEASTP	30-May-16	511690	WARNER	30-May-16
524084	MONSANTO	30-May-16	516030	YASHPPR	30-Jul-16

EARNING ESTIMATE Q4FY16					
BSE Code	Company Name	SALES ( Cr.)	SALES Growth	PAT ( Cr. )	PAT Growth
505200	EICHERMOT	4051.6	57.80	347.1	77.80
500182	HEROMOTOCO	7457.3	9.80	839.6	32.90
532343	TVSMOTORS	2835.9	15.40	109.2	20.70
522275	ALSTOMT&D	1393.4	2.40	75.9	40.40
539083	INOXWIND	1546.7	66.60	173.5	89.90
500550	SIEMENS	2743.8	3.40	144.5	(6.40)
500300	GRASIM	2253.4	32.40	262.2	477.10
531162	EMAMILTD	645.3	16.50	132.5	(4.00)
532424	GODREJCP	2228	7.00	307.9	16.00
532286	JINDALSTEL	4759.1	1.10	-684.1	Loss
533150	GODREJPROP	369.1	(47.10)	47.5	(7.60)
532638	SHOPERSTOP	934.4	14.40	16.3	58.60
500114	TITAN	2983	20.60	232.6	8.10
532129	HEXAWARE	874.8	22.60	102.9	23.40
500870	CASTROL	800.1	0.50	155.3	22.60
534091	MCX	56.6	5.40	30.2	(38.70)
511072	DHFL	427.1	16.90	202.1	24.60
500010	HDFC	2558.2	8.60	1863.5	0.10

RESULT Q4FY16					
BSE Code	Company Name	SALES ( Cr.)	SALES Growth	PAT ( Cr. )	PAT Growth
ATUL	500027	606.47	0.11	62.61	39.57
BAJAJTEMPO	500033	903.41	30.07	73.74	59.33
CEAT	500878	1450.66	-0.50	104.69	11.48
ELECON	505700	411.95	-10.08	28.38	(10.44)
EVERESTIND	508906	333.63	6.07	11.89	18.07
Sanofi India	500674	506.3	10.11	80.60	24.96
Linde India	523457	405.78	12.64	8.20	(43.02)
Kirl.Pneumatic	505283	182.97	3.50	20.91	3.00
Nirlon	500307	60.71	17.07	(11.40)	60.11
Fag Bearings	505790	412.33	1.74	42.45	2.54

SIL	530017	1.48	-17.78	(3.96)	76.00
TINPLATE	504966	172.01	-29.96	7.16	(42.44)
AMRITCORP	507525	9.73	-2.99	1.25	(52.83)
Shanthi Gears	522034	40.52	5.08	5.33	272.73
KAJARIACER	500233	662.63	9.77	70.23	47.82
CANFINHOME	511196	295.04	30.05	47.45	107.30
SSWL	513262	308.88	5.06	18.49	55.12
LGBBROSLTD	500250	262.59	3.60	15.66	19.54
CHOLAFIN	511243	1138.09	20.85	193.82	41.92
TATAELXSI	500408	293.95	27.10	41.09	37.70
GTL	500160	310.49	-12.26	(109.46)	(35.68)
UPL	512070	4292.23	20.47	552.02	25.44
GAEL	524226	650.95	6.21	31.46	56.83
PENTSFWARE	500329	0.92	22.67	(51.26)	(66.10)
EIMCOELECO	523708	43.51	-44.10	8.88	(26.73)
EPCIN	523754	56.64	21.28	3.90	550.00
FOSECOIND	500150	78.66	22.70	8.39	23.02
DABUR	500096	2157.31	10.93	331.93	16.56
KIRLOSFERR	500245	247.37	-23.33	12.10	752.11
ASAL	520119	68.62	-10.02	(0.68)	(89.27)
GICHSGFIN	511676	233.1	17.53	35.87	34.55
AROGRANITE	513729	50.02	-9.84	2.00	1.52
ADIFINCHM	530117	40.69	10.93	5.00	65.02
HCLTECH	532281	10342.8	11.61	1997.04	18.66
SHRIRAMCIT	532498	975.7	9.38	55.49	(62.91)
ASL	506194	12.95	49.54	1.46	50.52
Marico	531642	1302.78	6.53	138.44	25.81
AJANTPHARM	532331	419.2	15.29	106.31	43.39
GATI	532345	424.52	2.56	15.54	37.04
Gateway Distr.	532622	256.69	-2.60	26.47	(45.72)
BHARTIARTL	532454	24959.6	8.45	1290.30	2.79
RSYSTEMS	532735	141.87	-5.92	7.64	(6.83)
Virtual Global	534741	9.25	207.31	0.88	1660.00
NAVINFLUOR	532504	189.36	30.06	31.50	89.64
KPRMILL	532889	693.39	5.82	54.47	8.74
Motil.Oswal.Fin.	532892	16.29	-24.23	2.76	10.40
RPGLIFE	532983	68.82	12.47	2.25	(52.13)
SQS India BFSI	533121	72.2	37.26	10.60	562.50
APLLTD	533573	625.55	24.65	91.18	29.65



500425	AMBUJACEM	2445	303.76	0.83	(4.38)
532822	IDEA	9484	575.40	12.94	(38.90)
532482	GRANULES	373	33.30	5.27	48.66
500135	ESSELPACK	561	41.50	(6.84)	(8.61)
513434	TATAMETALI	351	48.70	(9.33)	71.30
532659	IDFC	2136	130.45	(16.85)	(65.87)
532493	ASTRAMICRO	124	19.11	14.78	246.20
533273	OBEROIRLTY	226	64.55	(33.13)	(37.34)
511218	SRTRANSFIN	2917	143.92	26.25	(54.56)

Economic Calendar					
Country	Monday 2th May 16	Tuesday 3rd May 16	Wednesday 4th May 16	Thursday 5th May 16	Friday 6th May 16
US	ISM Manufacturing PMI, Construction Spending m/m , ISM Manufacturing Prices.	IBD/TIPP Economic Optimism , FOMC Member Mester Speaks , Total Vehicle Sales.	ADP Non-Farm Employment Change , Prelim Nonfarm Productivity q/q , Prelim Unit Labor Costs q/q , Trade Balance , ISM Non-Manufacturing PMI, Crude Oil Inventories .	Unemployment Claims , FOMC Member Bullard Speaks , FOMC Member Bullard Speaks , Natural Gas Storage .	Average Hourly Earnings m/m , Non-Farm Employment Change , Unemployment Rate ,
UK/EURO ZONE	Spanish Manufacturing PMI, German Buba President Weidmann Speaks , ECB President Draghi Speaks.	Manufacturing PMI , PPI m/m ,	Spanish Unemployment Change , Spanish Services PMI , Italian Services PMI , French Final Services PMI , Construction PMI , German Buba President Weidmann Speaks .	Services PMI , ECB Economic Bulletin , Retail PMI ,	EU Economic Forecasts , Unemployment Rate , Employment Change .
INDIA	Auto sales no , Nikkei Manufacturing PMI		Nikkei Services PMI		

## Narnolia Securities Ltd.

### Narnolia Research Lab

Stellar IT Park | 5th Floor | Office Space No. 6 | Tower-IIInd Plot No. C-25 | Sector-62 | Noida | Ph : 0120-4215110

### Narnolia Securities Ltd.

201 | 2nd Floor | Marble Arch Building | 236B-AJC Bose Road Kolkata-700 020 Ph : 033-40501500

Email : narnolia@narnolia.com website :www.narnolia.com