

SGX NIFTY : 8196 ( 32 Pt Down )

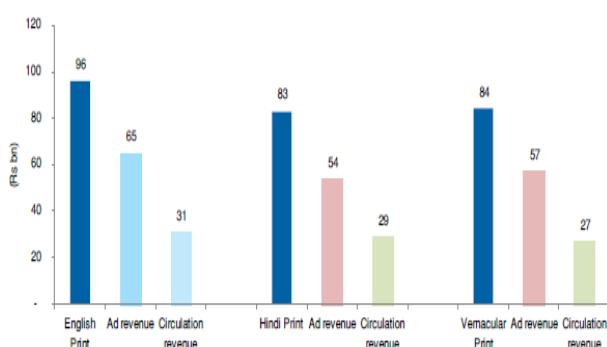
**Quote of the Day**

"Abnormally good or abnormally bad conditions do not last forever. This is true not only of general business but of particular industries as well. Corrective forces are often set in motion which tend to restore profits where they have disappeared, or to reduce them where they are excessive in relation to capital."

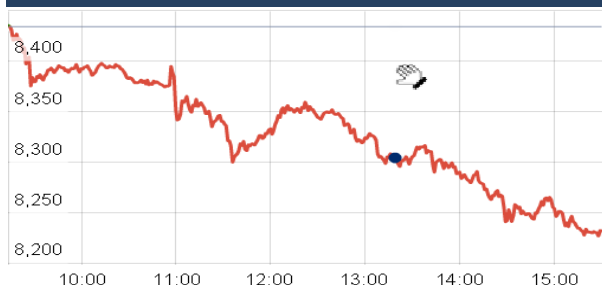
**Benjamin Graham**

**Chart of the Day**

**Print Media Market Mix**



**Index Action Nifty ( 2th June 15 )**



**Index**

Contents	Page	Coverage
News	2	Update
Economic Calendar	4	Update

**Market**

Name	Value	Change
Sensex	27,188.38	(660.61)
Nifty	8236.45	(195.62)
DOW	18,010.86	(115.44)
NASDAQ	5,076.52	(6.41)
CAC	5,004.46	(20.84)
DAX	11,328.80	(107.28)
FTSE	6,928.27	(25.31)
NIKKIE	20,452.30	(90.89)
HANG SENG	27,572.93	106.21
EW ALL SHARE	14177.32	(276.45)

**Instituional Turnover**

**FII**

Investor	Buy(Cr.)	Sale(Cr.)	Net(Cr.)
2th June,15	4255.53	4849.67	(594.14)
June,15	4255.53	4849.67	(594.14)
2015	501902.68	475647.69	26254.99

**DII**

Investor	Buy(Cr.)	Sale(Cr.)	Net(Cr.)
2th June,15	1760.02	1488.38	271.64
June,15	1760.02	1488.38	271.64
2015	188078.71	173093.14	14985.57

**Commodity Price**

Commodity/Currencies	Value	
GOLD	26880.00	↓
SILVER	38410.00	↑
CRUDEOIL	59.88	↓
COPPER	386.85	↓
NATURALGAS	171.60	↓
DOLLAR/RS.	63.82	↑
EURO/RS.	71.13	↑
POUND/RS.	97.79	↑

## Market Snapshot

### Top Price Performers

Top Performers 1D	% Change	Top Performers 1W	% Change	Top Performers 1M	% Change
REMIMETAL	20.00	INDTODE	47.73	RUPA	97.20
INDTODE	19.98	GLOBALVECT	40.04	VAARAD	76.19
SHRGLTR	19.06	FOURSOFT	35.28	AMTEKINDIA	63.48
ONMOBILE	10.59	PRAJIND	28.09	VARUNSHIP	62.87
REVATHI	10.42	REMIMETAL	27.57	JUBLINDS	56.39

### Worst Price Performers

Worst Performers 1D	% Change	Worst Performers 1W	% Change	Worst Performers 1M	% Change
SUDAR	(17.76)	BHAGWATIHO	(28.26)	HANUNG	(61.14)
INDINFO	(17.14)	LOGIXMICRO	(27.99)	OUTCTYTRVL	(54.68)
NUTEK	(13.33)	INDINFO	(25.64)	3IINFOTECH	(53.85)
CALSREF	(12.50)	PUNJABCHEM	(25.59)	BHAGWATIHO	(49.44)
PUNJABCHEM	(11.66)	VTCIND	(22.24)	SVCRES	(43.72)

## Top News

• **Neyveli Lignite Mgt Guideline** : Company expects its generation capacity to increase to 270 lakh tonnes for lignite this year

Company will generate the amount because lignite production mainly depends upon the consumption in the power generation and our entire 99 percent goes only to the power generation,

Neyveli had entered petroleum coke (Petcoke) and lignite market which led to its growth,

Neyveli Lignite Corporation Limited (NLC) is expected to grow with the commissioning of two new power plants of 1,500 megawatt each in two months

• **Monte Carlo Mgt Guideline** : Company expects a revenue growth of 15-20 percent for this year . Cost price reduction of raw materials like cotton and wool aided the company's margins to improve

summer sales in next quarter will boost the company's revenue against a week fourth quarter last year. Company also adding three more showrooms in coming June which is in Hyderabad, Coimbatore and Kochi

Socks manufacturing segment would grow to around Rs 50 crore in three years

• **AGC Networks Limited** ("the Company") has received a notification from AGC Networks Inc. (Indirectly Wholly Owned Subsidiary of the Company at US) updating the Company that AGC Networks Inc. has completed the acquisition of the business of Ensource, Inc. based in Jacksonville, Florida.

• **Jubilant FoodWorks** Launches "Be The Change": A Nationwide Movement on Cleanliness through Behavioral Change!

• **Sun Pharmaceutical Industries** Ltd and AstraZeneca Pharma India Limited (AZPIL) announced that AZPIL and Sun Pharma have entered into a distribution services agreement in India for AstraZeneca's brand "Axcer", a new brand of ticagrelor, a drug used for the treatment of acute coronary syndrome (ACS) . AZPIL already has a brand under the trademark "Brilinta", for ticagrelor molecule, launched and marketed by AZPIL in India since 2012.

• **Bajaj Auto May 2015 Auto sales** no : -1.7 % (YoY) , +2.7% (MoM) . Hero Motor Crop May 2015 Auto sales no : -5.4 % (YoY) , 6.9 % ( MoM ) . Atul Auto May 2015 Auto sales no : +7.1 % (YoY) +2.1 % ( MoM )

• **Emami** entered into an agreement with Sanjeev Juneja to acquire his hair & scalp care business under the Kesh King and allied brands. The transaction envisaged transfer of the business as going concern on a slump sale basis and will include brand portfolio of ayurvedic medicinal oil, herbal shampoo & conditioner and ayurvedic capsules along with its respective formulations and all related assets, rights and liabilities including working capital for a total consideration of Rs 1,651 crore.

• **RBI** cuts 25bds of repo rate 7.25% . RBI Keeps CRR Unchanged @ 4% . RBI Leaves SLR Unchanged 21.55

• **U.S. Census Bureau** said factory orders declined by a seasonally adjusted 0.4% in April, disappointing expectations for a gain of 0.2%. Factory orders rose by 2.2% in March, whose figure was revised up from a previously reported gain of 2.1%.

• **Eurostat** said consumer price inflation rose by a seasonally adjusted 0.3% last month, above expectations for a gain of 0.2% and following a flat reading in April.

• **U.K. construction purchasing managers' index** rose to a seasonally adjusted 55.9 last month from a reading of 54.2 in April. Economists had expected the index to improve to 55.0 in May. On the index, a reading above 50.0 indicates expansion, below indicates contraction.

• **U.K. M4 Money Supply** rose to a seasonally adjusted 0.4%, from 0.3% in the preceding quarter. Analysts had expected U.K. M4 Money Supply to rise to 0.4% in the last quarter.

• **Korea National Statistical Office** said that South Korean CPI rose to a seasonally adjusted annual rate of 0.5%, from 0.4% in the preceding month. Analysts had expected South Korean CPI to rise to 0.5% last month.

Country	Monday 1 June 15	Tuesday 2 June 15	Wednesday 3 June 15	Thursday 4 June 15	Friday 5 June 15
US		Core Durable Goods Orders m/m ,Durable Goods Orders m/m ,CB Consumer Confidence , New Home Sales , Richmond Manufacturing Index .	Crude Oil Inventories .	FOMC Member Williams Speaks , Unemployment Claims	Prelim GDP q/q , Prelim GDP Price Index q/q , Chicago PMI , Revised UoM Consumer Sentiment , Revised UoM Inflation Expectations .
UK/EURO ZONE	German Ifo Business Climate		GfK German Consumer Climate ,French Consumer Spending m/m , ECB Financial Stability Report , Belgian NBB Business Climate	German Prelim CPI m/m ,Italian Monthly Unemployment Rate , Italian Quarterly Unemployment Rate , Italian Prelim CPI m/m , Italian 10-y Bond Auction .	Spanish Flash CPI y/y , M3 Money Supply y/y , Private Loans y/y , Second Estimate GDP q/q , Prelim Business Investment q/q , Index of Services 3m/3m .
INDIA	Auto sales no , HSBC PMI no	RBI credit Policy	HSBC India Services PMI		

## Narnolia Securities Ltd.

<p><b>Narnolia Research Lab</b> Stellar IT Park   5th Floor   Office Space No. 6   Tower-IInd Plot No. C-25   Sector-62   Noida   Ph : 0120-4215110</p>	<p><b>Central Strategy Desk - Kolkata</b> 124   1st Floor   7/1 Lords Sinha Road   Kolkata - 71 Ph : 033-22821500   M : 93347 14418, 98302 69810</p>
---	--