

SGX NIFTY : 7759 (19 Pt Up)

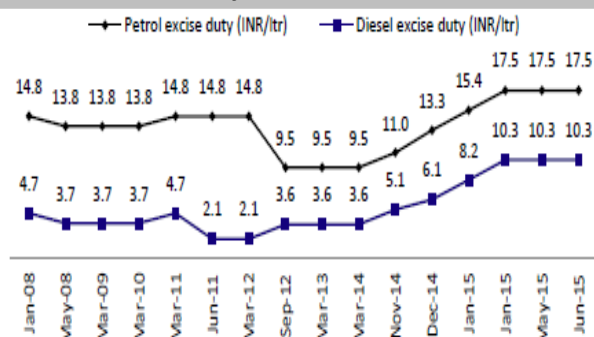
Quote of the Day

"There's a clarity that comes with great ideas: You can explain why something's a great business, how and why it's cheap, why it's cheap for temporary reasons and how, on a normal basis, it should be trading at a much higher level. You're never sitting there on the 40th page of your spreadsheet, as Buffett would say, agonizing over whether you should buy or not."

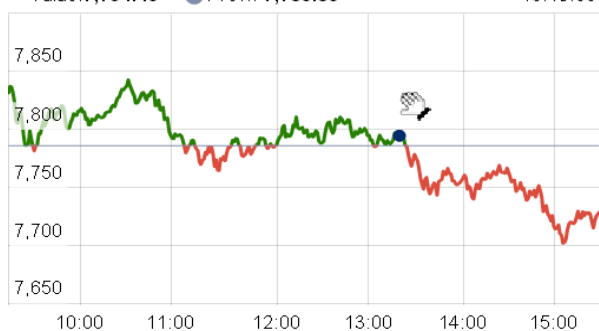
Joel Greenblatt

Chart of the Day

Excise duty of Petroleum Prodct



Index Action Nifty (2th Sept 15)



Index

Contents	Page	Coverage
News	2	Update
Economic Calendar	3	Update

Market

Name	Value	Change
Sensex	25,453.56	(242.88)
Nifty	7717.00	(68.85)
DOW	16,351.38	293.03
NASDAQ	4,749.98	113.87
CAC	4,554.92	13.76
DAX	10,048.05	32.48
FTSE	6,038.31	24.77
NIKKIE	18,356.83	261.43
HANG SENG	20,934.94	(250.94)
EW ALL SHARE	13460.65	(80.76)

Instituional Turnover

FII

Investor	Buy(Cr.)	Sale(Cr.)	Net(Cr.)
02-Sep-15	4573.60	6147.02	(1573.42)
Sept,15	61118.23	66899.09	(5780.86)
2015	782609.78	766239.43	16370.35

DII

Investor	Buy(Cr.)	Sale(Cr.)	Net(Cr.)
02-Sep-15	2253.96	1373.69	880.27
Sept,15	26839.87	22436.53	4403.34
2015	303628.11	273522.23	30105.88

Commodity Price

Commodity/Currencies	Value	
GOLD	26630.00	↓
SILVER	34720.00	↑
CRUDEOIL	45.96	↓
COPPER	345.80	↑
NATURALGAS	177.20	↓
DOLLAR/RS.	66.19	↑
EURO/RS.	74.33	↓
POUND/RS.	101.42	↓

Market Snapshot

Top Price Performers

Top Performers 1D	% Change	Top Performers 1W	% Change	Top Performers 1M	% Change
SHIV-VANI	19.97	ALPHAGEO	36.19	JUBLINDS	65.20
ESTER	19.88	DISHMAN	34.99	ORISSASP	54.96
JINDRILL	18.83	ESTER	33.91	SANCIA	51.72
DISHMAN	15.20	DSKULKARNI	31.86	DSKULKARNI	47.98
CALSREF	14.29	PGEL	26.44	ENERGYDEV	47.35

Worst Price Performers

Worst Performers 1D	% Change	Worst Performers 1W	% Change	Worst Performers 1M	% Change
DAMOTH	(18.46)	SAMTEL	(25.30)	AMTEKAUTO	(70.70)
KAMATHOTEL	(11.62)	JMTAUTOLD	(22.52)	AHMEDFORGE	(62.83)
DSKULKARNI	(9.98)	AMTEKINDIA	(22.43)	AMTEKINDIA	(62.06)
SAMTEL	(8.82)	GREENFIRE	(21.91)	KGL	(58.42)
FACORALL	(7.87)	KGL	(21.49)	JYOTISTRUC	(56.19)

Top News

• **Triveni Engineering Mgt Said** : The Rs 2,070 crore financial package will help in reducing the country's total sugar arrears to nearly Rs 11,000 crore plus from the previous Rs 14,000 crore,

The Uttar Pradesh government today announced Rs 2,070 crore financial package for cash-starved sugar mills. There will be arrears, which need to be addressed by the Central government. Prices need to be moved to kickstart exports

• **Bhushan Steel** will seek shareholders' nod to raise up to Rs 547.50 crore through private placement of shares to meet fund requirements of the company. The company will approach its shareholders with the special resolution at its annual general meeting scheduled later this month

• **SAIL** will spend Rs 7,500 crore on modernisation and expansion programme in the current fiscal ending March 2016. The public sector undertaking (PSU) also said it will seek shareholders nod to raise Rs 5,000 crore through securities to part finance its plans. So far, the 'Maharatna' company has invested over Rs 58,000 crore in its Rs 70,000 crore modernisation and expansion plan, which will augment the crude steel production capacity at its five steel plants to 23 million tonnes per annum (MTPA).

• **Analjit Singh-promoted Max India** is in talks with four private equity firms for the sale of a 22 percent stake in Max Life Insurance . The stake sale could fetch about Rs 4,000 crore, which would value the company at anywhere from Rs 16,000 crore to Rs 18,000 crore. Private equity firms TPG, Carlyle Group, Blackstone Group and Apollo have been approached

• **Infosys Finacle**, part of EdgeVerve Systems, a product subsidiary of Infosys, today announced the launch of its Finacle Payments Bank and Finacle Small Finance Bank solutions for the India market.

• **Petroliam Nasional Berhad** awarded the consortium of VA TECH WABAG and Muhibbah Engineering (M) Bhd, a contract of Rs 1500 crore.

• **Fortune Financial Services India** has acquired 1,00,000 equity shares of Rs. 10 each fully paid of Distress Asset Specialist Private Limited for cash deal. With this acquisition the Company's holding in the said Company is 100.00% and it became wholly owned subsidiary of the Company effective from September 01, 2015.

• **Tata Motors Aug 2015 Auto sales** No : -0.5 % (YoY) , +1.3 % (MoM) . Hero Motor Crop Aug 2015 Auto sales No : -14 % (YoY) , -1.6 % (MoM) . Bajaj Auto Aug 2015 Auto sales No : +1.5 % (YoY) ,-3.09 % (MoM) . M&M Motor Aug 2015 Auto sales No : +1.3 % (YoY) , + 2.8 % (MoM) . ASHOKLEY Aug 2015 Auto sales No : +38.6 % (YoY) , + 4.7 % (MoM)

• **Instituto Brasileiro de Geografia e Estatistica said that Brazilian Industrial Production** fell to -8.9%, from -2.8% in the preceding month whose figure was revised up from -3.2%.

• **U.K. construction purchasing managers' index** inched up to a seasonally adjusted 57.3 last month from a reading of 57.1 in July. Economists had expected the index to improve to 57.5 in August.

• **Australian Bureau of Statistics said that Australia's GDP** rose to a seasonally adjusted 0.2%, from 0.9% in the preceding quarter.

• **Bank of Japan said that Japan's Monetary Base** rose to 33.3%, from 32.8% in the preceding month. Analysts had expected Japan's Monetary Base to rise to 33.2% last month.

• **U.S. API Weekly Crude Stock** rose to 7.600M, from -7.300M in the preceding week. Analysts had expected U.S. API Weekly Crude Stock to fall -0.800M last week.

• **Chinese Manufacturing PMI** fell to an annual rate of 49.7, from 50.0 in the preceding month. Analysts had expected Chinese Manufacturing PMI to fall to 49.7 last month.

Economic Calendar

Country	Monday 31th Aug 15	Tuesday 1th Sept 15	Wednesday 2th Sept 15	Thursday 3th Sept 15	Friday 4th Sept 15
US	Chicago PMI .	Final Manufacturing PMI , ISM Manufacturing PMI , Construction Spending m/m , IBD/TIPP Economic Optimism , ISM Manufacturing Prices , Total Vehicle Sales .	Revised Nonfarm Productivity q/q , ADP Non-Farm Employment Change , Revised Unit Labor Costs q/q , Factory Orders m/m , Crude Oil Inventories .	Challenger Job Cuts y/y , Trade Balance , Unemployment Claims , Final Services PMI , ISM Non-Manufacturing PMI , Natural Gas Storage , Beige Book .	Non-Farm Employment Change , Unemployment Rate , Average Hourly Earnings m/m.
UK/EURO ZONE	CPI Flash Estimate y/y , Core CPI Flash Estimate y/y , Italian Retail Sales m/m .	Spanish Manufacturing PMI , Italian Manufacturing PMI , French Final Manufacturing PMI , German Unemployment Change , German Final Manufacturing PMI , Final Manufacturing PMI , Manufacturing PMI , Net Lending to Individuals m/m , M4 Money Supply m/m , Mortgage Approvals , Unemployment Rate .	German Retail Sales m/m , Spanish Unemployment Change , Halifax HPI m/m , PPI m/m , BRC Shop Price Index y/y .	Spanish Services PMI , Italian Services PMI , French Final Services PMI , German Final Services PMI , Final Services PMI , Services PMI , Retail Sales m/m , Spanish 10-y Bond Auction , Minimum Bid Rate , ECB Press Conference .	German Factory Orders m/m , Retail PMI , Trade Balance , Consumer Inflation Expectations , Revised GDP q/q , French 10-y Bond Auction .
INDIA	GDP Data	Auto sales No, HSBC Manufacturing PMI no , CAD Data.	Auto sales No .		

Narnolia Securities Ltd.

Narnolia Research Lab

Stellar IT Park | 5th Floor | Office Space No. 6 | Tower-I/Ind Plot No. C-25 | Sector-62 | Noida
| Ph : 0120-4215110

Central Strategy Desk - Kolkata

124 | 1st Floor | 7/1 Lords Sinha Road | Kolkata - 71
Ph : 033-22821500 | M : 93347 14418, 98302 69810