

SGX NIFTY : 7922 (25 Pt Down)

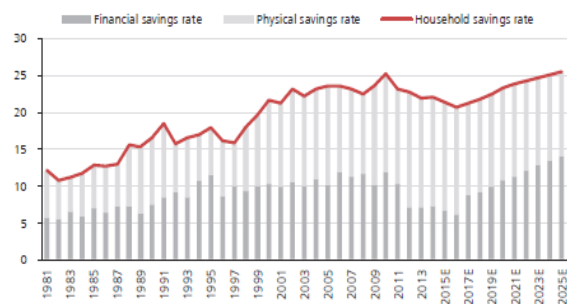
Quote of the Day

"We've long felt that the only value of stock forecasters is to make fortune tellers look good. Even now, Charlie (Munger) and I continue to believe that short-term market forecasts are poison and should be kept locked up in a safe place, away from children and also from grown-ups who behave in the market like children."

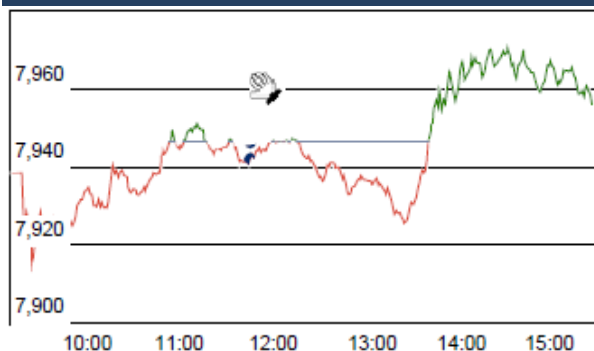
Warren Buffett

Chart of the Day

Indian various Saving Rate Trend



Index Action Nifty (1th Jan 16)



Index

Contents	Page	Coverage
News	2	Update
Economic Calendar	3	Update

Market

Name	Value	Change
Sensex	26,160.90	43.36
Nifty	7963.20	16.85
DOW	Closed	
NASDAQ	Closed	
CAC	Closed	
DAX	Closed	
FTSE	Closed	
NIKKIE	18,504.77	(528.94)
HANG SENG	21,404.49	(509.91)
EW ALL SHARE	14105.18	70.52

Instituional Turnover

FII

Investor	Buy(Cr.)	Sale(Cr.)	Net(Cr.)
1-Jan-16	540.77	312.66	228.11
Jan,16	540.77	312.66	228.11
2016	540.77	312.66	228.11

DII

Investor	Buy(Cr.)	Sale(Cr.)	Net(Cr.)
1-Jan-16	783.36	864.60	(81.24)
Jan,16	783.36	864.60	-81.24
2016	783.36	864.60	(81.24)

Commodity Price

Commodity/Currencies	Value	
GOLD	24966.00	↑
SILVER	33344.00	↑
CRUDEOIL	37.08	↓
COPPER	316.20	↑
NATURALGAS	157.80	↑
DOLLAR/RS.	66.15	↑
EURO/RS.	71.81	↑
POUND/RS.	97.63	↑

Market Snapshot

Top Price Performers

Top Performers 1D	% Change	Top Performers 1W	% Change	Top Performers 1M	% Change
SMPL	20.00	KSOILS	67.71	PARACABLES	110.80
MBSWITCH	20.00	KAVVERITEL	53.77	GEMINI	109.28
SUJANATOW	20.00	GMBREW	43.84	DONEAR	108.46
INDBANK	19.98	PRIMESECU	40.86	SPENTEX	93.16
MEGASOFT	19.97	SMPL	36.88	INFOMEDIA	82.59

Worst Performers 1D	% Change	Worst Performers 1W	% Change	Worst Performers 1M	% Change
GREENFIRE	(8.40)	SANCIA	(18.81)	SHRENUJ	(54.51)
MUKANDLTD	(6.44)	CADILAHC	(14.90)	KGNENT	(25.04)
WANBURY	(4.96)	KGNENT	(14.14)	OMNITECH	(24.04)
MANJEERA	(4.94)	SHRENUJ	(14.05)	PANCHMSTEL	(22.57)
SPENTEX	(4.92)	ERAINFRA	(13.96)	AMTEKINDIA	(21.59)

Top News

- Thomas Cook (India)** said its Bengaluru-based arm Qess has gained full control of US-based IT applications and outsourcing firm MFXchange Holding by acquiring an additional 51% stake for an undisclosed sum. Qess Corp had on November 3, 2014 entered into a share purchase agreement to acquire 100% stake in MFX from Fairfax Financial Holdings . The acquisition is expected to strengthen Qess's Global Technology Solutions business segment due to MFX's presence in the niche insurance focused IT products and solutions space in North America
- Cable Cords** Issue 15 lk shares to Mukul Agarwal (Non Promoter) for `43/sh . CMP 62; Promoter's stake to fall from 58.16% to 51.4% .
- IDBI Bank** said it has raised Rs 900 crore by way of issuing Basel-III compliant tier-II bonds. IDBI Bank mobilised Rs 900 crore today through issue of Basel-III compliant tier-II bonds on private placement basis to strengthen the bank's capital adequacy . The instrument - IDBI Omni Tier-II 2015-16 series-II - carries a coupon rate of 8.62 per cent per annum. The bond maturity date is January 2, 2026.
- Tata Consultancy Services**, which ended initial talks with Dell for its Perot IT business after a disagreement over price, is back at the table and is locked in a bidding war with rivals such as US-based Cognizant, three people familiar with the negotiations said. They (TCS and Perot) are several hundred million dollars apart and there are questions about which contracts will be transferred. This is far from done
- PNC Infratech** announced that pursuant to the satisfaction of the conditions precedent mentioned in the Share Purchase Agreement, including receipt of approvals of the lenders of the SPV, the Company has completed the sale of 2,44,23,700 equity shares (representing 8.51% of the share capital) of Jaora - Nayagaon Toll Road Company ("SPV") to Viva Highways and received an aggregate consideration of Rs. 34,19,31,800.
- Coal India** announced that December Coal Production At 52.07 mt Vs Target Of 51.08 mt . December Coal Offtake At 48.16 mt Vs Target Of 49.46 mt
- Kotak Mahindra Bank Ltd** has informed that the Bank on has acquired 10,00,000 equity shares at Rs. 10/- each aggregating to Rs. 1 crore being 9.99% of the paid-up capital of Institutional investor Advisory Services India Limited. Kotak Mahindra Bank Ltd ended at Rs. 724.5, up by Rs. 5.95 or 0.83% from its previous closing of Rs. 718.55 on the BSE.
- IRB** bags the largest project in road sector costing `10,050 cr from Ministry of Road Transport on annuity basis . IRB to construct a tunnel on Srinagar-Leh highway in J&K . Tunnel length of 14.08 kms
- The Caixin Purchasing Managers' Index (PMI)** fell to 48.2 in December, from 48.6 in November, contracting for a tenth month and coming in below a Reuters poll forecast for 49.0. Official PMI data released over the weekend showed the index was at 49.7 in December, in line with forecasts from a Reuters poll and up a tad from November's 49.6.
- U.S. Department of Labor** said the number of individuals filing for initial jobless benefits in the week ending December 25 increased by 20,000 to a seasonally adjusted 287,000 from the previous week's total of 267,000. Analysts expected jobless claims to rise by 3,000 to 270,000 last week.
- Russian CPI** rose to a seasonally adjusted annual rate of 0.8%, from 0.8% in the preceding month. Analysts had expected Russian CPI to rise 0.9% last month. Russian CPI 0.8% vs. 0.9% forecast
- Reserve Bank of Australia** said that Australian Private Sector Credit rose to a seasonally adjusted 0.4%, from 0.7% in the preceding month. Analysts had expected Australian Private Sector Credit to rise 0.6% last month.
- South Korean CPI** rose to a seasonally adjusted annual rate of 1.3%, from 1.0% in the preceding month. Analysts had expected South Korean CPI to rise to 1.1% last month.

Economic Calendar

Country	Monday Jan 16	Tuesday 5th Jan 16	Wednesday 6th Jan 16	Thursday 7th Jan 16	Friday 8th Jan 16
US	ISM Manufacturing PMI , Construction Spending m/m .	Total Vehicle Sales .	ADP Non-Farm Employment Change ,Trade Balance , ISM Non-Manufacturing PMI , FOMC Meeting Minutes .	Unemployment Claims.	Unemployment Rate , Non-Farm Employment Change , Unemployment Rate .
UK/EURO ZONE	ret Lending to Individuals m/m , Manufacturing PMI , Spanish Manufacturing PMI .	Spanish Unemployment Change , Construction PMI ,	Services PMI , German Final Services PMI , Halifax HPI m/m .	Unemployment Rate, German Retail Sales m/m, German Factory Orders m/m,	Trade Balance .
INDIA	Auto No		HSBC Service PMI No .		



(Regn. No. : INP 000004011)

Narnolia Securities Ltd.

Narnolia Research Lab

Stellar IT Park | 5th Floor | Office Space No. 6 | Tower-II/nd Plot No. C-25 | Sector-62 | Noida | Ph :
0120-4215110

Central Strategy Desk - Kolkata

124 | 1st Floor | 7/1 Lords Sinha Road | Kolkata - 71
Ph : 033-22821500 | M : 93347 14418, 98302 69810