

SGX NIFTY : 7454 (14 Pt up)

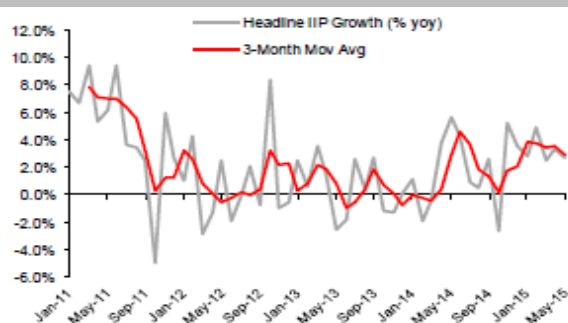
Quote of the Day

"Abnormally good or abnormally bad conditions do not last forever. This is true not only of general business but of particular industries as well. Corrective forces are often set in motion which tend to restore profits where they have disappeared, or to reduce them where they are excessive in relation to capital."

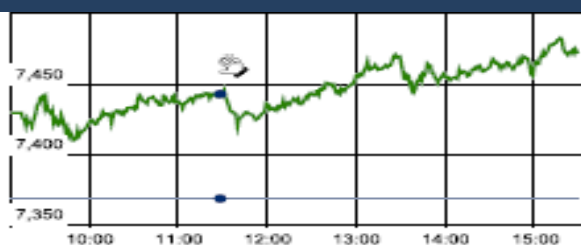
Benjamin Graham

Chart of the Day

IIP Trend



Index Action Nifty (3th Mar 16)



Index

Contents	Page	Coverage
News	2	Update
Economic Calendar	3	Update

Market

Name	Value	Change
Sensex	24,606.99	364.01
Nifty	7475.60	106.75
DOW	16,639.97	-57.32
NASDAQ	4,707.42	4.00
CAC	4,416.08	(8.81)
DAX	9,751.92	(24.70)
FTSE	6,130.46	(16.60)
NIKKEI	16,899.09	-61.07
HANG SENG	20,049.12	107.36
EW ALL SHARE	12668.48	231.83

Instituional Turnover

FII

Investor	Buy(Cr.)	Sale(Cr.)	Net(Cr.)
02-Mar-16	4363.82	3451.84	911.98
Mar,16	77250.13	74223.47	3026.66
2016	974375.76	978594.98	(4219.22)

DII

Investor	Buy(Cr.)	Sale(Cr.)	Net(Cr.)
02-Mar-16	1845.35	2310.10	(464.75)
Mar,16	32159.62	33309.48	(1149.86)
2016	393588.51	344120.36	49468.15

Commodity Price

Commodity/Currencies	Value	
GOLD	29592.00	↓
SILVER	36670.00	↓
CRUDEOIL	36.91	↑
COPPER	327.05	↑
NATURALGAS	111.70	↓
DOLLAR/RS.	67.34	↓
EURO/RS.	73.48	↓
POUND/RS.	95.14	↑

Market Snapshot

Top Price Performers

Top Performers 1D	% Change	Top Performers 1W	% Change	Top Performers 1M	% Change
GLOBUSSPR	19.97	SHAKTIPUMP	50.67	LLOYDMETAL	53.18
INFODRIVE	19.15	SANDUMA	42.16	RAMKY	41.18
PRAKASHSTL	19.14	LLOYDMETAL	41.83	RUSHIL	37.49
FACT	18.87	ONELIFECAP	40.94	NDTV	36.80
JUSTDIAL	17.89	SUVEN	33.78	INFODRIVE	28.95

Worst Performers 1D	% Change	Worst Performers 1W	% Change	Worst Performers 1M	% Change
CALSREF	(14.29)	NOVAIRNSTL	(19.78)	PDUMJEPULP	(65.42)
COMFINTE	(9.17)	SRSREAL	(19.13)	STCINDIA	(43.98)
BATLIBOI	(8.39)	PRIMEPRO	(17.96)	FOURSOFT	(43.88)
KGL	(8.02)	TWL	(15.35)	GEMINI	(43.85)
QUADRANT	(5.98)	PRADIP	(15.15)	MARKSANS	(43.63)

Top News

- **Wockhardt Mgt Guideline** : The central government's proposal to reduce weighted deduction on research and development (R&D) from 200 percent to 150 percent is unlikely to have a major impact on Wockhardt . Wockhardt will maintain a double digit growth target for FY17 and expects Indian operations to grow 15-20 percent while UK operations should grow within 15 percent.

- **Eveready India** has decided to look at various options to reorganise its business in order to promote its packaged tea business. Khaitan said the packaged tea market was fragmented with there being a difference a huge difference between the market leaders HUL and Tata Tea and the rest. From a level of around Rs 80 crore in the next five years, there is the potential for us to scale this up to at least Rs 300-400 crore as a separate business altogether

- **Pfizer 's** Global Established Products division announced the launch of its largest selling antacid Gelusil liquid in an on the go sachet format in India. Company have launched Gelusil liquid in a ready-to-drink, on-the-go sachet format. The sachet aims to reach out to consumers who are constantly on the go and have to rely on multiple elements of cure to settle the acidity attacks. It will be rolled out in metros, smaller towns and rural areas simultaneously, the Gelusil sachet is available across pharmacy stores and is priced at Rs 8 per sachet

- **HDFC Ltd** will raise Rs 1,000 crore by issuing non-convertible debentures, to cater to its housing finance business needs. HDFC will issue secured redeemable non-convertible debentures on a private placement basis to raise the amount of Rs 1,000 crore.

- **Tata Steel** received final environment nod for its Rs 1,877 crore expansion project to be carried out at Jamshedpur Steel Works in Jharkhand.

Gayatri Projects has made a strong foray into the fast-growing railway EPC sector, by winning a Rs. 4,744 crore contract for designing and building the Iqbalgarh - Vadodara section of the Western Dedicated Freight Corridor (DFCC) in a consortium with M/s Sojitz Corporation and M/s L&T Ltd.

- **Apollo, JK Tyres** plan Rs 3,000 crore expansion. These companies for a glimpse into their expansion roadmap and learnt that all plans revolve around the investment promises they made at the Tamil Nadu Global Investors' meet in September last year, amounting to nearly Rs 3,000 crore.

- **TVS Motor Company** launches Powerful Four Stroke TVS XL 100 in Andhra Pradesh and Telangana

- **Instituto Brasileiro de Geografia e Estatistica** said that **Brazilian GDP** fell to a seasonally adjusted -5.9%, from -4.5% in the preceding month. Analysts had expected Brazilian GDP to fall to -6.0% last month.

- **U.K. Markit/CIPS Services Purchasing Managers Index** declined to 52.7 last month from a reading of 55.6 in January that was its highest reading since last November. Analysts had expected the index to dip to only 55.1 in February.

- **Markit Economics** said that **French Services PMI** fell to a seasonally adjusted 49.2, from 49.8 in the preceding month. Analysts had expected French Services PMI to remain unchanged at 49.8 last month.

- **French Services PMI** fell to a seasonally adjusted 49.2, from 49.8 in the preceding month. Analysts had expected French Services PMI to remain unchanged at 49.8 last month.

- **U.K. Halifax HPI** fell to a seasonally adjusted -1.4%, from 1.7% in the preceding month. Analysts had expected U.K. Halifax HPI to rise 0.1% last month.

- **Australia's trade balance** rose to a seasonally adjusted -2.937B, from -3.535B in the preceding month. Analysts had expected Australia's trade balance to rise to -3.100B last month.

Economic Calendar

Country	Monday 29th Feb 16	Tuesday 1st Mar 16	Wednesday 2th Mar 16	Thursday 3th Mar 16	Friday 4th Mar 16
US	Chicago PMI, Pending Home Sales m/m	ISM Manufacturing PMI , Construction Spending m/m.	Crude Oil Inventories, Beige Book,	Challenger Job Cuts y/y , Unemployment Claims , Revised Nonfarm Productivity q/q, ISM Non-Manufacturing PMI.	Average Hourly Earnings m/m , Non-Farm Employment Change , Trade Balance , Unemployment Rate.
UK/EURO ZONE	CPI Flash Estimate y/y , Core CPI Flash Estimate y/y, German Retail Sales m/m	Manufacturing PMI , German Unemployment Change , Spanish Manufacturing PMI	Construction PMI, Spanish Unemployment Change , MPC Member Cunliffe Speaks	Halifax HPI m/m , Services PMI,	Retail PMI.
INDIA	Union Budget	Auto sales No , HSBC Manufacturing PMI No	Auto Sales no		

Narnolia Research Lab

Stellar IT Park | 5th Floor | Office Space No. 6 | Tower-I/Ind Plot No. C-25 | Sector-62
| Noida | Ph : 0120-4215110

Central Strategy Desk - Kolkata

124 | 1st Floor | 7/1 Lords Sinha Road | Kolkata - 71
Ph : 033-22821500 | M : 93347 14418, 98302 69810