

SGX NIFTY : 7770.51 (25 Pt Up)

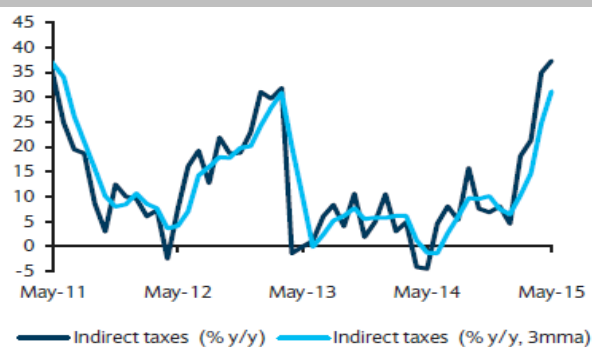
Quote of the Day

"Experience tends to confirm a long-held notion that being prepared, on a few occasions in a lifetime, to act promptly in scale, in doing some simple and logical thing, will often dramatically improve the financial results of that lifetime."

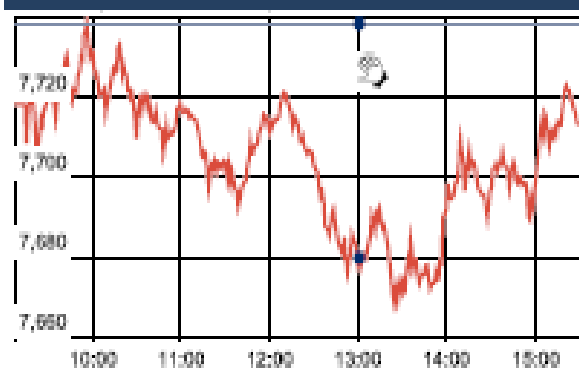
Charlie Munger

Chart of the Day

Indirect Tax Trend



Index Action Nifty (1st Apr 16)



Index

Contents	Page	Coverage
News	2	Update
Economic Calendar	3	Update

Market

Name	Value	Change
Sensex	25,269.64	(72.22)
Nifty	7713.05	(25.32)
DOW	17,602.30	120.81
NASDAQ	4,914.54	44.59
CAC	4,322.24	(62.82)
DAX	9,794.64	(170.67)
FTSE	6,146.05	(28.85)
NIKKEI	16,197.79	33.63
HANG SENG	20,498.92	(277.78)
EW ALL SHARE	13314.87	(17.30)

Instituional Turnover

FII

Investor	Buy(Cr.)	Sale(Cr.)	Net(Cr.)
01-Apr-16	3725.52	3511.51	214.01
Mar,16	4495.44	4145.03	350.41
2016	725986.99	703485.37	22501.62

DII

Investor	Buy(Cr.)	Sale(Cr.)	Net(Cr.)
01-Apr-16	1159.75	1679.66	(519.91)
Mar,16	41851.78	29825.23	12026.55
2016	278598.41	252929.23	25669.18

Commodity Price

Commodity/Currencies	Value	
GOLD	28040.00	↓
SILVER	35922.00	↓
CRUDEOIL	36.48	↑
COPPER	318.55	↓
NATURALGAS	129.70	↓
DOLLAR/RS.	66.26	↑
EURO/RS.	75.65	↑
POUND/RS.	94.44	↑

Market Snapshot

Top Price Performers

Top Performers 1D	% Change	Top Performers 1W	% Change	Top Performers 1M	% Change
PRITI	20.00	KSOILS	50.55	DWARKESH	97.80
EON	19.96	INDTODE	37.67	OU DHSUG	96.36
STOREONE	19.94	SATRAPROP	35.25	UPERGANGES	94.58
UTTAMSUGAR	19.94	UGARSUGAR	34.17	DHARSUGAR	83.93
MUKTAARTS	19.68	SHREYAS	26.57	THIRUSUGAR	83.49

Worst Performers 1D	% Change	Worst Performers 1W	% Change	Worst Performers 1M	% Change
SATRAPROP	(9.90)	RAINBOWPAP	(31.36)	RAINBOWPAP	(46.77)
IVRCLINFRA	(9.70)	ABGSHIP	(29.47)	SHRENUJ	(38.95)
ALMONDZ	(9.13)	BIRLACOT	(20.00)	TFL	(36.41)
BINNY	(8.74)	RICOHQ	(20.00)	AMTEKINDIA	(33.97)
BHAGYNAGAR	(8.33)	TFL	(19.71)	GLOBOFFS	(33.83)

Top News

• BAJAJELEC Mgt. Interview

- > Secondary Sales strategy will implemented from 1st of April in Rural Area
- > Additional Manpower will required for Secondary Sales strategy
- > Mgt. is confident to achieve DOUBLE DIGIT growth in FAN Segment
- > Market Share in FAN segment is 13-14%
- > Mgt. focus is on improving profitability and margin rather than Market Share
- > Advertisement Budget is 90 Cr for FY17

• HCL Tech says

- > Company Will buy all business of Geometric except Geometric's 58 percent stake in JV 3DPLM
- > Company Will issue 10 shares of Rs 2 each for 43 shares of Geometric of face value Rs 2
- > Business acquired has over 60 global clients in USA & Europe
- > The Deal provides several cross-sell & up-sell opportunities
- > Synergies will allow company to gain from rapidly growing manufacturing engineering market

• **Fitch Ratings** downgraded Tata Steel and its wholly-owned subsidiary Tata Steel UK Holdings from stable rating earlier on the back of decline in profitability and jump in leverage during FY16, following challenging market conditions for its operations in India as well as overseas, especially in the UK.

• **Sanghi Industries** has successfully exited from corporate debt restructuring (CDR) mechanism . Company Issued non-convertible debentures worth Rs 256.5 crore on private placement basis

• **Godrej Consumer Products Ltd (GCPL)** has signed an agreement to acquire Strength of Nature LLC (SON), a leading company of hair care products for women of African descent. This acquisition is a further step to accelerate GCPL's global 3 by 3 strategy and scale up its presence in Africa by being at the forefront of serving the hair care needs of women of African descent

• **Future Lifestyle** increases stake in Mineral Fashions to 52.44 percent from 49.62 percent

• **ICICI Bank** said it has sold 9 percent stake in its general insurance venture ICICI Lombard while 2 percent stake in life insurance subsidiary ICICI Prudential for about Rs 2,200 crore. Prem Watsa-run Fairfax Financial Holdings acquired an additional 9 percent stake in ICICI Lombard General Insurance Company for an estimated Rs 1,550 crore. The transaction values the company at Rs 17,225 crore.

• **Persistent Systems** will acquire US-based Genwi for an undisclosed amount, a move that will help the Indian IT firm strengthen its digital offering portfolio. The acquisition of San Jose-based Genwi by Persistent Systems further fortifies its leadership team with a focus on compelling experiences that are fundamental to "the embrace of digital transformation"

• **U.S. Total Vehicle Sales** rose to a seasonally adjusted 16.57M, from 17.54M in the preceding month. Analysts had expected U.S. Total Vehicle Sales to rise 17.60M last month.

• **The Institute for Supply Management (ISM)** said its index of national factory activity rose to 51.8 from 49.5 the month before. The reading was just above expectations of 50.7 from a Reuters poll of 68 economists. The employment index fell to 48.1 from 48.5 a month earlier. Expectations called for a reading of 49.5.

• **U.S. consumer sentiment** rose to a seasonally adjusted 91.0, from 90.0 in the preceding month. Analysts had expected UoM consumer sentiment to rise to 90.5 last month.

• **ISM manufacturing PMI** rose to 51.8, from 49.5 in the preceding month. Analysts had expected the ISM manufacturing PMI to rise to 50.7 last month.

Economic Calendar

Country	Monday 4th April 16	Tuesday 5th April 16	Wednesday 6th April 16	Thursday 7th April 16	Friday 8th April 16
US	Labor Market Conditions Index m/m .	Trade Balance , Final Services PMI , ISM Non-Manufacturing PMI , IBD/TIPP Economic Optimism .	Crude Oil Inventories , FOMC Meeting Minutes,	Unemployment Claims , JOLTS Job Openings , Natural Gas Storage , Consumer Credit m/m , Treasury Currency Report .	NFIB Small Business Index , Wholesale Inventories m/m .
UK/EURO ZONE	Construction PMI , Spanish Unemployment Change , PPI m/m .	German Factory Orders m/m ,Spanish Services PMI , Italian Services PMI , French Final Services PMI , Services PMI , Retail Sales m/m .	Halifax HPI m/m ,Retail PMI , Housing Equity Withdrawal q/q , German Industrial Production m/m .	French Gov Budget Balance ,French Trade Balance , FPC Meeting Minutes .	Manufacturing Production m/m ,Goods Trade Balance , Industrial Production m/m , German Trade Balance , French Industrial Production m/m .
INDIA		RBI Credit Policy	Nikkei Services PMI		

Narnolia Securities Ltd.

Narnolia Research Lab
Stellar IT Park | 5th Floor | Office Space No. 6 | Tower-IIInd Plot No. C-25 | Sector-62 | Noida | Ph : 0120-4215110

Central Strategy Desk - Kolkata
124 | 1st Floor | 7/1 Lords Sinha Road | Kolkata - 71
Ph : 033-22821500 | M : 93347 14418, 98302 69810