

SGX NIFTY : 7418 (55 Pt Up)

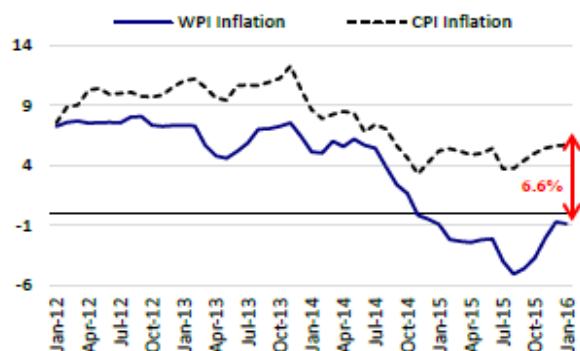
Quote of the Day

"Charlie and I decided long ago that in an investment lifetime it's too hard to make hundreds of smart decisions. That judgment became ever more compelling as Berkshire's capital mushroomed and the universe of investments that could significantly affect our results shrank dramatically. Therefore, we adopted a strategy that required our being smart - and not too smart at that - only a very few times. Indeed, we'll now settle for one good idea a year."

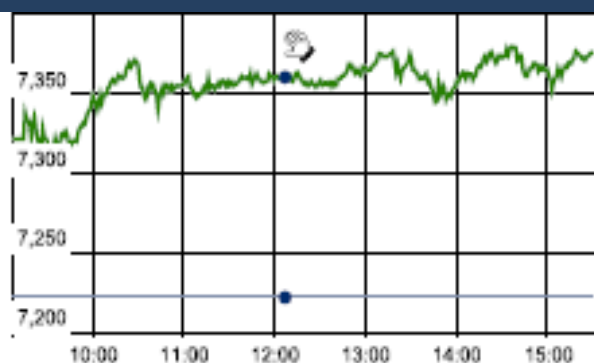
Warren Buffett

Chart of the Day

WPI Trend



Index Action Nifty (2th Mar 16)



Index

Contents	Page	Coverage
News	2	Update
Economic Calendar	3	Update

Market

Name	Value	Change
Sensex	24,242.98	463.63
Nifty	7368.85	146.55
DOW	16,639.97	-57.32
NASDAQ	4,703.42	13.82
CAC	4,424.89	18.05
DAX	9,776.62	59.64
FTSE	6,147.06	(5.82)
NIKKEI	18,895.08	148.53
HANG SENG	19,931.74	(89.75)
EW ALL SHARE	12668.48	231.83

Instituional Turnover

FII

Investor	Buy(Cr.)	Sale(Cr.)	Net(Cr.)
02-Mar-16	5877.60	4440.10	1437.50
Mar,16	13381.97	9031.88	4350.09
2016	156519.43	178381.54	(21862.11)

DII

Investor	Buy(Cr.)	Sale(Cr.)	Net(Cr.)
02-Mar-16	2024.92	2618.59	(593.67)
Mar,16	4228.47	5656.73	(1428.26)
2016	86143.44	63120.93	23022.51

Commodity Price

Commodity/Currencies	Value	
GOLD	29360.00	↑
SILVER	36076.00	↑
CRUDEOIL	36.91	↑
COPPER	327.95	↑
NATURALGAS	115.60	↓
DOLLAR/RS.	67.54	↓
EURO/RS.	73.21	↓
POUND/RS.	94.88	↑

Market Snapshot

Top Price Performers

Top Performers 1D	% Change	Top Performers 1W	% Change	Top Performers 1M	% Change
ONELIFECAP	20.00	SHAKTIPUMP	56.05	LLOYDMETAL	53.18
SHIVTEX	19.93	SUVEN	37.32	RAMKY	41.18
SHAKTIPUMP	19.64	LLOYDMETAL	30.95	RUSHIL	37.49
VALECHAENG	16.70	AMTEKINDIA	30.75	NDTV	36.80
CALSREF	16.67	SANDUMA	29.60	INFODRIVE	28.95

Worst Performers 1D	% Change	Worst Performers 1W	% Change	Worst Performers 1M	% Change
SHREERAM	(8.95)	TWL	(23.15)	PDUMJEPULP	(65.42)
USHDEVINT	(8.90)	TREEHOUSE	(20.85)	STCINDIA	(43.98)
PARABDRUGS	(7.73)	KALINDEE	(18.37)	FOURSOFT	(43.88)
REMIMETAL	(7.63)	TEXRAIL	(17.78)	GEMINI	(43.85)
INDINFO	(7.41)	PRAKASHSTL	(17.21)	MARKSANS	(43.63)

Top News

- **HEROMOTOCORP Feb 2016 Auto sales no** : +13.7% (YoY) , -2.1% (MoM) . SML Isuzu total sales up 3 percent at 1,010 units (YoY). Tata Motors No Feb 2016 Auto Sales No : +5.5% (YoY) , -0.8% (MoM) . Maruti Feb 2016 Auto Sales No : -0.9% (YoY) , +3.4 % (MoM) . Bajaj Auto Feb 2016 Auto Sales No : 12.1% (YoY) , -7.2 % (MoM) . ASHOKLEY Feb 2016 Auto Sales No : 24.6% (YoY) , -3.4 % (MoM) . M&M Feb 2016 Auto Sales No : 15.7% (YoY) , 0.5 % (MoM) . ATUL AUTO Feb 2016 Auto Sales No : +3.2% (YoY) , -5.3 % (MoM)

- **Tata Consultancy Services** announced that as a new member of the GE Digital Alliance Program created by GE Digital, it will develop innovative digital solution that increase the productivity of mobile workforce and assets in motion by leveraging Predix, GE's cloud platform for the industrial internet

Talwalkars Better Value Fitness to acquire stake in Talwalkars Club Systems

- **Ashoka Buildcon** is set to refinance a huge portion of its consolidated debt to bring down interest costs by at least 150-basis points. The company plans to refinance almost 80 percent of its consolidated debt, which amounts to Rs 3200 crore and is in talks with bankers like IDFC, Axis Bank, SBI for this. The company is also in talk with NHAI to form tri-party agreement. They plan to refinance five of its major projects in the state of Maharashtra, Chattisgarh. Projects include Durg Bypass-Maharashtra border road, Sambalpur-Baragarh road & Dhankuni-Kharagpur section and also Belgaum-Dharwad border road

- **HCL** has been providing application management services to Husqvarna and with this deal, HCL will now provide end-to-end integrated infrastructure and applications services, covering data centre services, network services, security services, applications operations and support services. HCL's engagement with Husqvarna is nearly three years old and Husqvarna is marquee customer for the company in Nordics region.

Gayatri Projects has made a strong foray into the fast-growing railway EPC sector, by winning a Rs. 4,744 crore contract for designing and building the Iqbalgarh - Vadodara section of the Western Dedicated Freight Corridor (DFCC) in a consortium with M/s Sojitz Corporation and M/s L&T Ltd.

- **Bharat Heavy Electricals** is getting thermal power project worth Rs 5,600 crore in Tamil Nadu. Tamil Nadu chief minister Selvi J Jayalalithaa handed over letter of award for setting up of main plant package for 2x800 MW (coal-based) Uppur supercritical thermal power project to BHEL in Chennai,

- **Aviation Turbine Fuel (ATF)**, or jet fuel, price was hiked by 12 percent but that of non-subsidised cooking gas LPG was slashed by Rs 61.5 per cylinder on global cues.

- **Euro zone PPI** fell to a seasonally adjusted -1.0%, from -0.8% in the preceding month. Analysts had expected Euro zone PPI to fall -0.7% last month.

- **Spain's Employment Ministry** said the number of unemployed people increased by a seasonally adjusted 2,200 last month, above expectations for a gain of 200. The number of unemployed people rose by 57,200 in January.

- **Swiss GDP** rose to a seasonally adjusted 0.4%, from -0.1% in the preceding quarter. Analysts had expected Swiss GDP to rise 0.2% in the last quarter.

- **Japan's Monetary Base** rose to 29.0%, from 28.9% in the preceding month. Analysts had expected Japan's Monetary Base to fall to 27.9% last month.

- **South Korean Industrial Production** remained unchanged at a seasonally adjusted annual rate of -1.9%, from -1.9% in the preceding month. Analysts had expected South Korean Industrial Production to fall to -2.2% last month.

- **U.S. index of purchasing managers** inched up to 49.5 last month from a reading of 48.2 in January. Analysts had expected the manufacturing PMI to rise to 48.5 in February.

- **U.S. Construction Spending** rose to a seasonally adjusted 1.5%, from 0.6% in the preceding month whose figure was revised up from 0.1%. Analysts had expected U.S. Construction Spending to rise to 0.4% last month.

Economic Calendar

Country	Monday 29th Feb 16	Tuesday 1st Mar 16	Wednesday 2th Mar 16	Thursday 3th Mar 16	Friday 4th Mar 16
US	Chicago PMI, Pending Home Sales m/m	ISM Manufacturing PMI , Construction Spending m/m.	Crude Oil Inventories, Beige Book,	Challenger Job Cuts y/y , Unemployment Claims , Revised Nonfarm Productivity q/q, ISM Non-Manufacturing PMI.	Average Hourly Earnings m/m , Non-Farm Employment Change , Trade Balance , Unemployment Rate.
UK/EURO ZONE	CPI Flash Estimate y/y , Core CPI Flash Estimate y/y, German Retail Sales m/m	Manufacturing PMI , German Unemployment Change , Spanish Manufacturing PMI	Construction PMI, Spanish Unemployment Change , MPC Member Cunliffe Speaks	Halifax HPI m/m , Services PMI,	Retail PMI.
INDIA	Union Budget	Auto sales No , HSBC Manufacturing PMI No	Auto Sales no		

Narnolia Research Lab

Stellar IT Park | 5th Floor | Office Space No. 6 | Tower-I/Ind Plot No. C-25 | Sector-62
| Noida | Ph : 0120-4215110

Central Strategy Desk - Kolkata

124 | 1st Floor | 7/1 Lords Sinha Road | Kolkata - 71
Ph : 033-22821500 | M : 93347 14418, 98302 69810