

SGX NIFTY : 7748 (33 Pt Down)

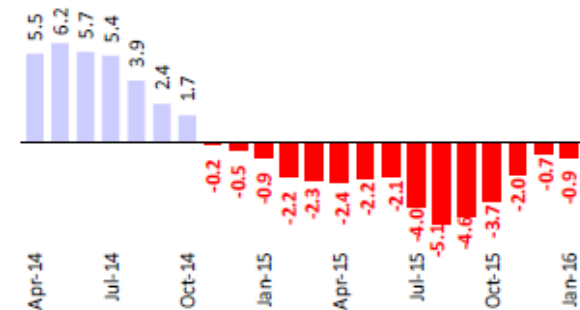
Quote of the Day

In a bull market, one must avoid the error of the preening duck that quacks boastfully after a torrential rainstorm, thinking that its paddling skills have caused it to rise in the world. A right-thinking duck would instead compare its position after the downpour to that of the other ducks on the pond."

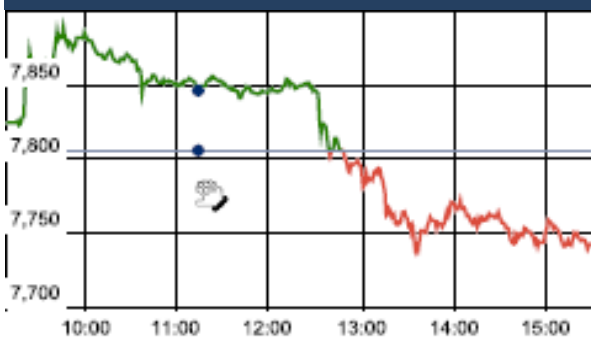
Warren Buffett

Chart of the Day

WPI Trend



Index Action Nifty (2th May 16)



Index

Contents	Page	Coverage
News	2	Update
Economic Calendar	3	Update

Market

Name	Value	Change
Sensex	25,229.70	(207.70)
Nifty	7747.00	(207.27)
DOW	18,041.35	51.23
NASDAQ	4,763.22	(54.63)
CAC	4,371.98	(70.77)
DAX	9,926.77	(196.30)
FTSE	6,185.28	(56.30)
NIKKEI	16,147.38	(518.47)
HANG SENG	20,470.43	(206.41)
EW ALL SHARE	13619.95	4.08

Instituional Turnover

FII

Investor	Buy(Cr.)	Sale(Cr.)	Net(Cr.)
03-May-16	3598.55	4353.83	(755.28)
May,16	108002.95	83801.44	24201.51
2016	150641.83	173941.44	(23299.61)

DII

Investor	Buy(Cr.)	Sale(Cr.)	Net(Cr.)
03-May-16	1945.94	1461.30	484.64
May,16	2203.55	3038.14	(834.59)
2016	84118.52	60502.34	23616.18

Commodity Price

Commodity/Currencies	Value	
GOLD	30224.00	↓
SILVER	40984.00	↓
CRUDEOIL	45.24	↑
COPPER	329.60	↓
NATURALGAS	139.10	↑
DOLLAR/RS.	66.42	↓
EURO/RS.	76.50	↑
POUND/RS.	96.76	↑

Market Snapshot

Top Price Performers

Top Performers 1D	% Change	Top Performers 1W	% Change	Top Performers 1M	% Change
ANANTRAJ	15.34	DIAPOWER	73.09	MEGASOFT	87.38
BLBLIMITED	14.24	RMMIL	40.00	DIAPOWER	82.49
WSI	12.08	LOKHSG	30.49	KIRIINDUS	80.78
BGREENERGY	11.15	JINDRILL	29.56	UTTAMSUGAR	74.23
ANDHRACEMT	10.97	AMTEKINDIA	27.15	OISL	63.66

Worst Performers 1D	% Change	Worst Performers 1W	% Change	Worst Performers 1M	% Change
PRAKASHSTL	(19.76)	PRAKASHSTL	(47.63)	VIVIMEDLAB	(78.96)
SATINDLTD	(16.08)	SRLTD	(22.03)	RAINBOWPAP	(53.97)
CALSREF	(14.29)	RAINBOWPAP	(21.49)	RICOHQ	(24.88)
LOKHSG	(11.68)	SEZAL	(17.10)	RMCL	(24.50)
TVSMOTOR	(9.66)	MSPL	(16.64)	GODFRYPHLP	(24.44)

Top News

- **Cera Sanitaryware** has been outsourcing its tiles from abroad. But it has started a new subsidiary recently — Anjali Tiles — which is going to produce tiles. Company will contribute around Rs 100 crore in revenues in FY17. Company expects the revenues to grow 20 percent owing to the new tiles business, a decrease in raw material and gas prices. Company expect our earnings before interest, taxes, depreciation and amortisation (EBITDA) margins to be better by at least one percent.

- **CCL Products Mgt** said that after performing better than the guidance of 20 percent bottomline growth provided for FY16. Company expects 25 percent bottomline growth in FY17. It earns around Rs 20 to 25 crore in India, of which 50 percent comes from its own brand. Company expects it will earn around Rs 100 to 150 crore from its own brand in the next three to five years in India. Company expect at least 20-22 percent bottomline will be additional to what company has been doing now. Company expect to do at least around 4,000-5,000 tonne in the next minimum 3three to five years.

- **Kajaria Ceramics Mgt Guideline** : Company says the company aims for 13 to 14 percent growth in its volumes in the current financial year. The company did better than the guidance it had given for growth in volumes in the last quarter of financial year 2016. It had guided about 10 percent growth in volumes but performed better at 12 percent. Kajaria's margins were at an all time high at 20.5 percent in Q4. This attributed to the fall in gas prices.

- **JSW Energy To Acquire JSPL's 1,000 MW Chhattisgarh Plant**
JSW Energy-JSPL To Sign Term Sheet Shortly
JSW Energy-JSPL Deal To Have A Cash & A Debt Component
JSW Energy To Take On Entire Debt Component Of JSPL's Chhattisgarh Plant
- **JSPL says** : Confident will stand vindicated at the end of the ongoing judicial process
Deny all allegations made against company & management
Amarkonda block allocation was made to company purely on merit

- **MEP Infrastructure Developers Ltd** has received the Letter of Acceptance (LOA) dated May 03, 2016 from National Highways Authority of India (NHAI) informing that MEP has been engaged as the Contractor for the Project of "Collection of user fee through Fee Collection Agency on the basis of competitive Bidding for Paduna Toll Plaza at Km. 311.100 for the section Km. 278.000 to Km. 348.000 [Udaipur- Kherwada] of NH No. 8 in the State of Rajasthan"

- **EU** has cuts euro zone growth and inflation forecasts which dragged markets in the region. The European Commission now sees euro zone GDP in 2016 at 1.6 percent from a previous forecast of 1.7 percent growth.

- **New Zealand said that N.Z. unemployment rate** rose to a seasonally adjusted 5.7%, from 5.3% in the preceding quarter.

- **Chilean Unemployment Rate** rose to an annual rate of 6.3%, from 5.9% in the preceding month. Analysts had expected Chilean Unemployment Rate to rise to 6.1% last month.

- **U.S. inflation barely** rose in March as consumer spending remained tepid, making it less likely that the Federal Reserve will be able to follow through on its projected two interest rate increases this year.

- **German CPI fell to a seasonally adjusted** -0.2%, from 0.8% in the preceding month. Analysts had expected German CPI to fall -0.2% last month.

- **German unemployment rate remained** unchanged at a seasonally adjusted 6.2%, from 6.2% in the preceding month. Analysts had expected German unemployment rate to remain unchanged at 6.2% last month.

- **Swedish Retail Sales fell to a seasonally adjusted** -0.7%, from 0.1% in the preceding month whose figure was revised up from -0.2%. Analysts had expected Swedish Retail Sales to rise 0.5% last month.

Result Calendar Q4FY16

BSE Code	Company Name	Date	BSE Code	Company Name	Date
532268	ACCELYA	04-May-16	532419	SMARTLINK	05-May-16
512599	ADANIENT	04-May-16	524727	SPANDIAQ	05-May-16
516020	AGIOPAPER	04-May-16	504959	STOVACQ	05-May-16
590122	ASHIKACR	04-May-16	533200	TALWALKARS	05-May-16
533138	ASTEC	04-May-16	512297	WHELTEX	05-May-16
502352	AURANPAP	04-May-16	590013	XPROINDIA	05-May-16
513375	CARBORUNIV	04-May-16	532404	7TEC	06-May-16
500280	CENTENKA	04-May-16	524208	AARTIIND	06-May-16
523100	COSMOFE	04-May-16	590006	AMRUTANJAN	06-May-16
530765	DEVKI	04-May-16	532475	APTECHT	06-May-16
511072	DHFL	04-May-16	508933	AYMSYNTEX	06-May-16
532129	HEXAWARE	04-May-16	522004	BATLIBOI	06-May-16
509895	HINDMILL	04-May-16	530803	BHAGIL	06-May-16
539337	HKT	04-May-16	500335	BIRLACORPN	06-May-16
524648	INDOAMIN	04-May-16	532974	BIRLAMONEY	06-May-16
504786	INVPRECQ	04-May-16	501833	CHOWGULSTM	06-May-16
532286	JINDALSTEL	04-May-16	533288	CLARIS	06-May-16
502157	MANGLMCEM	04-May-16	520081	ECSTSTL	06-May-16
504112	NELCO	04-May-16	517477	ELNET	06-May-16
531209	NUCLEUS	04-May-16	539844	EQUITAS	06-May-16
535754	ORIENTCEM	04-May-16	531508	EVEREADY	06-May-16
533228	SKSMICRO	04-May-16	532657	FACORSTE	06-May-16
532513	TVSELECT	04-May-16	532312	GEOMETRIC	06-May-16
520113	VESUVIUS	04-May-16	501455	GREAVESCOT	06-May-16
532953	VGUARD	04-May-16	524735	HIKAL	06-May-16
524348	AARTIDRUGS	05-May-16	532960	IBVENTURES	06-May-16
534612	AMTL	05-May-16	533520	IBWSL	06-May-16
539637	BVL	05-May-16	539083	INOXWIND	06-May-16
500870	CASTROLIND	05-May-16	532162	JKPAPER	06-May-16
505200	EICHERMOT	05-May-16	532642	JSWHL	06-May-16
531162	EMAMILTD	05-May-16	532714	KEC	06-May-16
500620	GESHIP	05-May-16	505890	KENNAMET	06-May-16
507815	GILLETTE	05-May-16	530011	MANGCHEFER	06-May-16
533150	GODREJPROP	05-May-16	538964	MERCURYLAB	06-May-16
500182	HEROMOTOCO	05-May-16	532541	NIITTECH	06-May-16
509675	HIL	05-May-16	506532	NITTAGELA	06-May-16
509635	HINDCOMPOS	05-May-16	520021	OMAXAUTO	06-May-16
532636	IIFL	05-May-16	502420	ORIENTPPR	06-May-16
511473	INDBANK	05-May-16	500680	PFIZER	06-May-16
523465	INDBNK	05-May-16	521149	PRIMEURB	06-May-16
500211	INSILCO	05-May-16	500339	RAIN	06-May-16
500458	KORE	05-May-16	500111	RELCAPITAL	06-May-16
534091	MCX	05-May-16	501154	ROSEI	06-May-16
539767	MNIL	05-May-16	538685	SHEMAROO	06-May-16
532529	NDTV	05-May-16	500550	SIEMENS	06-May-16
500730	NOCIL	05-May-16	533018	SIMPLXMIL	06-May-16
500459	PGHH	05-May-16	533019	SIMPLXPAP	06-May-16

532872	SPARC	06-May-16	500241	KIRLOSIBROS	10-May-16
532679	STOREONE	06-May-16	532899	KSCL	10-May-16
500114	TITAN	06-May-16	511728	KZLFIN	10-May-16
533252	WELINV	06-May-16	521018	MARALOVER	10-May-16
505533	WESTLIFE	06-May-16	523828	MENONBE	10-May-16
532300	WOCKPHARMA	06-May-16	530173	OSCARGLO	10-May-16
512245	ZNIVITRD	06-May-16	509820	PAPERPROD	10-May-16
532418	ANDHRABANK	07-May-16	533295	PSB	10-May-16
511724	BALFC	07-May-16	532497	RADICO	10-May-16
500300	GRASIM	07-May-16	535322	REPCOHOME	10-May-16
524669	HESTERBIO	07-May-16	503229	SIMPLXREA	10-May-16
521016	ICIL	07-May-16	500472	SKFINDIA	10-May-16
524330	JAYAGROGN	07-May-16	505192	SMLISUZU	10-May-16
532275	LANDMARC	07-May-16	539353	SWARAJAUTO	10-May-16
539251	NIRVIKARA	07-May-16	532812	TFL	10-May-16
511632	OLYMTFI	07-May-16	533655	TRITURBINE	10-May-16
517500	ROTO	07-May-16	519373	VIMALOIL	10-May-16
532900	SEINV	07-May-16	509055	VISAKAIND	10-May-16
519091	TASTYBIT	07-May-16	507892	WINSOMEDJ	10-May-16
539488	TFL	07-May-16	505537	ZEEL	10-May-16
522122	VOITHPAPR	07-May-16	500877	APOLLOTYRE	11-May-16
512161	8KMILES	09-May-16	500820	ASIANPAINT	11-May-16
530431	ADORFO	09-May-16	526433	ASMTEC	11-May-16
509470	BOMOXY-B1	09-May-16	514045	BSL	11-May-16
506401	DEEPAKNI	09-May-16	500085	CHAMBLFERT	11-May-16
505982	HINDUJAFO	09-May-16	520131	COARO	11-May-16
500696	HINDUNILVR	09-May-16	519588	DFM	11-May-16
536868	INTELSOFT	09-May-16	517354	HAVELLS	11-May-16
519570	LAKSHMIO	09-May-16	539599	IPPL	11-May-16
526179	LUDLOWJUT	09-May-16	538837	JSTL	11-May-16
522241	MMFL	09-May-16	500247	KOTAKBANK	11-May-16
523874	PRECISION	09-May-16	509220	PTL	11-May-16
514234	SANGAMIND	09-May-16	539678	QUICKHEAL	11-May-16
513605	SRIPIPES	09-May-16	500350	RSWM	11-May-16
532410	TRANSCOR	09-May-16	532795	SITICABLE	11-May-16
502986	VTL	09-May-16	532218	SOUTHBANK	11-May-16
532893	VTMLTD	09-May-16	532782	SUTLEJTEX	11-May-16
530063	YASHRAJC	09-May-16	533553	TDPOWERSYS	11-May-16
505665	ABCBEARS	10-May-16	514142	TTL	11-May-16
532831	ABHISHEK	10-May-16	509243	TVSSRICHA	11-May-16
517041	ADORWELD	10-May-16	503960	BBL	12-May-16
526707	ALCHEM	10-May-16	500124	DRREDDY*	12-May-16
532114	AREALTY	10-May-16	532809	FSL	12-May-16
505010	AUTOAXLES	10-May-16	532296	GLENMARK	12-May-16
532548	CENTURYPLY	10-May-16	509488	GRAPHITE	12-May-16
523367	DCMSHRIRAM	10-May-16	500189	HINDUJAVEN	12-May-16
500119	DHAMPURSUG	10-May-16	509496	ITDCM	12-May-16
500125	EIDPARRY	10-May-16	523207	KOKUYOCMLN	12-May-16
533676	INDOTHAI	10-May-16	531213	MANAPPURAM	12-May-16

500126	MERCK	12-May-16	532430	BFUTILITIE	16-May-16
534184	NAGAROIL	12-May-16	534309	NBCC	16-May-16
500790	NESTLEIND	12-May-16	521080	PASARI	16-May-16
532882	OMNITECH	12-May-16	523628	PODDAR	16-May-16
532254	POLARIS	12-May-16	532725	SOLARINDS	16-May-16
521194	SILINV	12-May-16	514215	BINNY	17-May-16
520056	SUNCLAYLTD	12-May-16	500676	GSKCONS	17-May-16
521064	TRIDENT	12-May-16	517334	MOTHERSUMI	17-May-16
531846	TRINITYLEA	12-May-16	500337	PRIMESECU	17-May-16
500231	UMANGDAIR	12-May-16	517562	TRIGYN	17-May-16
531335	ZYDUSWELL	12-May-16	532485	BLIL	18-May-16
526955	ABLBIO	13-May-16	500228	JSWSTEEL	18-May-16
523537	APMIN	13-May-16	532524	PTC	18-May-16
509367	APTANN	13-May-16	507966	RASRESOR	18-May-16
506285	BAYERCROP	13-May-16	515043	SAINTGOBAIN	18-May-16
532321	CADILAHC	13-May-16	501423	SHAILY	18-May-16
532885	CENTRALBK	13-May-16	524212	WANBURY	18-May-16
526483	EDUEXEL	13-May-16	532173	CYBERTECH	19-May-16
505893	HINDHARD	13-May-16	532526	DISHMAN	19-May-16
533177	IL&FSTRANS	13-May-16	500133	ESABINDIA	19-May-16
524378	JMDEPACKR	13-May-16	532835	ICRA	19-May-16
523405	JMFINANCIL	13-May-16	505750	JOSTS	19-May-16
512147	KAJALSY	13-May-16	524037	RAMAPHO	19-May-16
524699	KILBURNC	13-May-16	532988	RANEENGINE	19-May-16
526947	LAOPALA	13-May-16	531088	TULIPSTA	19-May-16
512505	MEENST	13-May-16	532156	VAIBHAVGBL	19-May-16
532340	OMNIAX	13-May-16	533023	WABCOINDIA	19-May-16
506590	PHILIPCARB	13-May-16	500303	ABIRLANUVO	20-May-16
531768	POLYMED	13-May-16	513117	AMFORG	20-May-16
507649	RASOI	13-May-16	500038	BALRAMCHIN	20-May-16
520057	SONASTEER	13-May-16	504648	BOMBWIR	20-May-16
524488	SVCSUPE	13-May-16	500825	BRITANNIA	20-May-16
532390	TAJGVK	13-May-16	590043	HARITASEAT	20-May-16
533170	TAMBOLI	13-May-16	532150	INDRAMEDCO	20-May-16
532478	UBL	13-May-16	505737	INTLCOMBQ	20-May-16
512303	ZMANSOON	13-May-16	506943	JBCHEPHARM	20-May-16
512004	ZNILKENG	13-May-16	532652	KTKBANK	20-May-16
534742	ZUARI	13-May-16	517344	MINDTECK	20-May-16
500780	ZUARIGLOB	13-May-16	524558	NEULANLAB	20-May-16
532166	ALKASEC	14-May-16	500260	RAMCOCEM	20-May-16
530829	CILSEC	14-May-16	532369	RAMCOIND	20-May-16
526821	DAICHI	14-May-16	532661	RML	20-May-16
532133	IFGLREFRAC	14-May-16	500403	SUNDRMFAST	20-May-16
590130	KANCOTEA	14-May-16	522113	TIMKEN	20-May-16
530443	KIRANSY-B	14-May-16	506690	UNICHEMLAB	20-May-16
530517	RELAXO	14-May-16	526775	VALIANT	20-May-16
504398	SJCORP	14-May-16	524709	NAGAAGRI	21-May-16
526231	STDSFAC	14-May-16	533470	RUSHIL	21-May-16
500412	TIRUMALCHM	14-May-16	521240	SAMBANDAM	21-May-16

519552	HERITGFOOD	23-May-16	532662	HTMEDIA	26-May-16
500266	MAHSCOOTER	23-May-16	539276	KAYA	26-May-16
532987	RBL	23-May-16	526299	MPHASIS	26-May-16
521234	SRINACHA	23-May-16	500387	SHREECEM	26-May-16
500400	TATAPOWER	23-May-16	516108	STHINPA	26-May-16
532978	BAJAJFINSV	24-May-16	531652	THIRDFIN	26-May-16
500034	BAJFINANCE	24-May-16	500414	TIMEX	26-May-16
523736	DPL	24-May-16	509910	ZSOUTGAS	26-May-16
500170	GTNINDS	24-May-16	500103	BHEL	27-May-16
500262	MAFATLAFIN	24-May-16	506315	BORAX	27-May-16
523642	PIIND	24-May-16	532783	DAAWAT	27-May-16
519230	RICHIRICH	24-May-16	506405	DHARAMSI	27-May-16
502180	SHREDIGCEM	24-May-16	522261	DOLPHINOFF	27-May-16
590072	SUNDRMBRAK	24-May-16	507794	KHAICHEM	27-May-16
538268	WONDERLA	24-May-16	523248	MACPLASQ	27-May-16
535755	ABFRL	25-May-16	531049	NEELKAN	27-May-16
519174	ASHAI	25-May-16	500346	PUNJCOMMU	27-May-16
506820	ASTRAZEN	25-May-16	505800	RANEHOLDIN	27-May-16
532977	BAJAJ-AUTO	25-May-16	537954	SKP	27-May-16
500490	BAJAJHLDNG	25-May-16	526161	SPENTA	27-May-16
500660	GLAXO	25-May-16	506655	SUDARSCHEM	27-May-16
500164	GODREJIND	25-May-16	512101	TRIPR	27-May-16
500500	HINDMOTORS	25-May-16	506685	ULTRAMAR	27-May-16
533217	HMVL	25-May-16	519500	BKV	28-May-16
500252	LAXMIMACH	25-May-16	508939	BLCISER	28-May-16
532777	NAUKRI	25-May-16	530859	COSBOARD	28-May-16
500338	PRISMCEM	25-May-16	531227	DECOMIC	28-May-16
530073	SANGHVIMOV	25-May-16	538319	GCMCAPI	28-May-16
517320	SAVINFOCO	25-May-16	500202	INDLEASE	28-May-16
519234	SIEL	25-May-16	532644	JKCEMENT	28-May-16
526827	SPICEISL	25-May-16	511092	JMDTELEFILM	28-May-16
524542	SUKHIJTS	25-May-16	530421	KUWERIN	28-May-16
533158	THANGAMAYL	25-May-16	506079	LAKPRE	28-May-16
500411	THERMAX	25-May-16	517449	MAGNAELQ	28-May-16
532515	TVTODAY	25-May-16	532865	MEGH	28-May-16
523319	BALMLAWRIE	26-May-16	501343	MOTOGENFIN	28-May-16
514440	BPTX	26-May-16	530557	NCLRESE	28-May-16
534804	CARERATING	26-May-16	533202	NITESHEST	28-May-16
500144	FINCABLES	26-May-16	519014	PRSNTIN	28-May-16
517300	GIPCL	26-May-16	532503	RAJPALAYAM	28-May-16

521188	UNITEDTE	28-May-16	524280	KOPRAN	30-May-16
524038	VENLONENT	28-May-16	539446	KRISHFAB	30-May-16
509038	VOLLF	28-May-16	519421	KSE	30-May-16
531047	ADVPOWER	30-May-16	531164	LADIAMO	30-May-16
531223	ANJANI	30-May-16	506113	LIFELINE	30-May-16
532888	ASIANILES	30-May-16	531319	MARUTISE	30-May-16
509480	BERGEPAIN	30-May-16	523197	MAZDAPR	30-May-16
511607	BIRSHLEDU	30-May-16	532307	MELSTAR	30-May-16
531175	BLSINFOTE	30-May-16	526251	MIDEASTP	30-May-16
500067	BLUESTARCO	30-May-16	524084	MONSANTO	30-May-16
531458	BOSTONBIO	30-May-16	514332	NEOINFRA	30-May-16
539131	CLLIMITED	30-May-16	531779	PADALPO	30-May-16
507833	COMPUPN	30-May-16	535514	PRIMECAPM	30-May-16
531270	DAZZEL	30-May-16	512099	PUNITCO	30-May-16
531306	DHPIND	30-May-16	526813	RAGHUNAT	30-May-16
503681	ELCIDIN	30-May-16	531552	RAGHUTOB	30-May-16
535917	GCMCOMM	30-May-16	531500	RAJESHEXPO	30-May-16
535431	GCMSECU	30-May-16	530125	SAMRATPH	30-May-16
530263	GLOBALCA	30-May-16	526532	SFPIL	30-May-16
531608	GORANIN	30-May-16	530593	SIRHIND	30-May-16
531737	GREENCREST	30-May-16	539117	SUJALA	30-May-16
511543	GSBFIN	30-May-16	507747	TTKHEALTH	30-May-16
514386	GUJCOTEX	30-May-16	531411	TUNITEX	30-May-16
524754	GUJMEDI	30-May-16	521226	UNIROYAL	30-May-16
526779	HINAFIL	30-May-16	531831	UNISH	30-May-16
532851	INSECTICID	30-May-16	531762	UNJHAFOR	30-May-16
538422	JACKSON	30-May-16	539123	VBIND	30-May-16
526558	JAMEHOT	30-May-16	530401	VINYOFL	30-May-16
530405	JINDCAP	30-May-16	511690	WARNER	30-May-16
516078	JUMBO	30-May-16	516030	YASHPPR	30-Jul-16
535730	KHOOSURAT	30-May-16			

EARNING ESTIMATE Q4FY16

BSE Code	Company Name	SALES (Cr.)	SALES Growth	PAT (Cr.)	PAT Growth
505200	EICHERMOT	4051.6	57.80	347.1	77.80
500182	HEROMOTOCO	7457.3	9.80	839.6	32.90
532343	TVSMOTORS	2835.9	15.40	109.2	20.70
522275	ALSTOMT&D	1393.4	2.40	75.9	40.40
539083	INOXWIND	1546.7	66.60	173.5	89.90
500550	SIEMENS	2743.8	3.40	144.5	(6.40)
500300	GRASIM	2253.4	32.40	262.2	477.10
531162	EMAMILTD	645.3	16.50	132.5	(4.00)
532424	GODREJCP	2228	7.00	307.9	16.00
532286	JINDALSTEL	4759.1	1.10	-684.1	Loss
533150	GODREJPROP	369.1	(47.10)	47.5	(7.60)
532638	SHOPERSTOP	934.4	14.40	16.3	58.60
500114	TITAN	2983	20.60	232.6	8.10
532129	HEXAWARE	874.8	22.60	102.9	23.40
500870	CASTROL	800.1	0.50	155.3	22.60

534091	MCX	56.6	5.40	30.2	(38.70)
511072	DHFL	427.1	16.90	202.1	24.60
500010	HDFC	2558.2	8.60	1863.5	0.10

RESULT Q4FY16

BSE Code	Company Name	SALES (Cr.)	SALES Growth	PAT (Cr.)	PAT Growth
522275	ALSTOMT&D	977.8	-28.17	29.70	(45.03)
500040	CENTURYTEX	2047.67	1.79	9.16	(22.44)
532921	ADANIPOINTS	1947	17.72	914.00	38.33
533096	ADANIPOWER	7344	57.55	1133.00	58.45
532443	CERA	280.59	12.04	29.80	34.72

Economic Calendar

Country	Monday 2th May 16	Tuesday 3rd May 16	Wednesday 4th May 16	Thursday 5th May 16	Friday 6th May 16
US	ISM Manufacturing PMI, Construction Spending m/m , ISM Manufacturing Prices.	IBD/TIPP Economic Optimism , FOMC Member Mester Speaks , Total Vehicle Sales.	ADP Non-Farm Employment Change , Prelim Nonfarm Productivity q/q , Prelim Unit Labor Costs q/q , Trade Balance , ISM Non-Manufacturing PMI, Crude Oil Inventories .	Unemployment Claims , FOMC Member Bullard Speaks , FOMC Member Bullard Speaks , Natural Gas Storage .	Average Hourly Earnings m/m , Non-Farm Employment Change , Unemployment Rate ,
UK/EURO ZONE	Spanish Manufacturing PMI, German Buba President Weidmann Speaks , ECB President Draghi Speaks.	Manufacturing PMI , PPI m/m ,	Spanish Unemployment Change , Spanish Services PMI , Italian Services PMI , French Final Services PMI , Construction PMI , German Buba President Weidmann Speaks .	Services PMI , ECB Economic Bulletin , Retail PMI ,	EU Economic Forecasts , Unemployment Rate , Employment Change .
INDIA	Auto sales no , Nikkei Manufacturing PMI		Nikkei Services PMI		

Narnolia Securities Ltd.

Narnolia Research Lab

Stellar IT Park | 5th Floor | Office Space No. 6 | Tower-IIInd Plot No. C-25 | Sector-62 | Noida | Ph : 0120-4215110

Narnolia Securities Ltd.

201 | 2nd Floor | Marble Arch Building | 236B-AJC Bose Road Kolkata-700 020 Ph : 033-40501500
Email : narnolia@narnolia.com website :www.narnolia.com