

SGX NIFTY : 8398 (40.50 Pt Up)

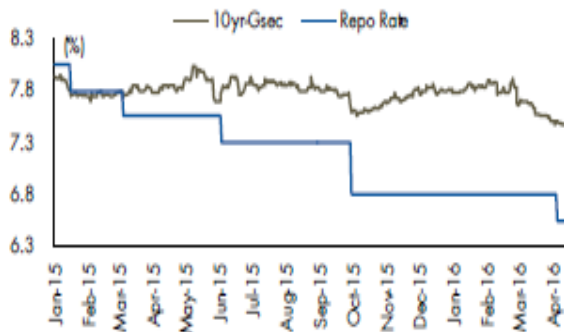
Quote of the Day

"The book value deserves at least a fleeting glance by the public before it buys or sells shares in a business undertaking. In any particular case the message that the book value conveys may well prove to be inconsequential and unworthy of attention. But this testimony should be examined before it is rejected."

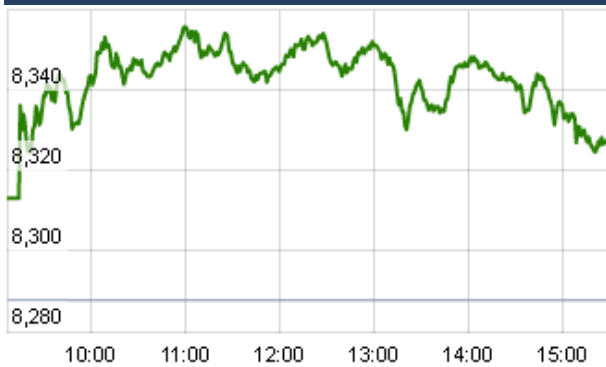
Benjamin Graham

Chart of the Day

Govt Bond Rate & Repo Rate



Index Action Nifty (1st July 16)



Index

Contents	Page	Coverage
News	2	Update
Economic Calendar	3	Update

Market

Name	Value	Change
Sensex	27,144.91	145.19
Nifty	8328.35	40.60
DOW	17,675.16	(57.94)
NASDAQ	4,862.57	19.99
CAC	4,273.96	36.48
DAX	9,776.12	96.03
FTSE	6,577.83	73.50
NIKKEI	15,729.38	46.90
HANG SENG	21,079.09	284.72
EW ALL SHARE	14516.27	92.90

Instituional Turnover

FII

Investor	Buy(Cr.)	Sale(Cr.)	Net(Cr.)
01-Jul-16	3086.32	3273.83	(187.51)
July,16	3086.32	3273.83	(187.51)
2016	484581.85	479516.49	5065.36

DII

Investor	Buy(Cr.)	Sale(Cr.)	Net(Cr.)
01-Jul-16	2747.46	1840.41	907.05
July,16	2747.46	1840.41	907.05
2016	200450.48	189882.35	10568.13

Commodity Price

Commodity/Currencies	Value	
GOLD	31463.00	↑
SILVER	45559.00	↑
CRUDEOIL	50.34	↑
COPPER	333.15	↑
NATURALGAS	192.20	↑
DOLLAR/RS.	67.32	↓
EURO/RS.	74.90	↑
POUND/RS.	89.37	↑

Market Snapshot

Top Price Performers

Top Performers 1D	% Change	Top Performers 1W	% Change	Top Performers 1M	% Change
VIVIDHA	20.00	KHAITANELE	65.63	SUPREMETEX	134.23
MLKFOOD	19.99	BANG	59.08	RANASUG	125.42
STOREONE	19.99	PARACABLES	46.18	KEMROCK	114.50
VIKASWSP	19.91	SPENTEX	40.71	EUROCERA	106.71
SPENTEX	19.85	STERLINBIO	39.58	EMAMIINFRA	97.61

Worst Performers 1D	% Change	Worst Performers 1W	% Change	Worst Performers 1M	% Change
KPIT	(14.36)	MANDHANA	(18.48)	MANDHANA	(64.70)
GEMINI	(9.50)	LLOYDSTEEL	(17.53)	PRAKASHSTL	(49.45)
STEERINTER	(7.36)	RISAINTL	(17.16)	RAIREKMOH	(47.00)
ANDHRACEMT	(7.23)	GREENFIRE	(17.06)	GEINDSYS	(30.59)
ISIBARS	(7.23)	HANUNG	(15.33)	SUNASIAN	(29.77)

Top News

- **LT Foods** has incorporated a subsidiary LT Foods International in the UK. The company aims to strengthen its presence in Europe with the help of the subsidiary.

LT Foods International will be operational in July-August and the company expects a USD 100 million boost to its revenues from the subsidiary. Currently, the company gets USD 250 million in revenues from international operations. The company is targeting a 20 percent growth revenue growth in FY17

- **Godrej Properties** -Forms 2 new funds for investment in residential projects -Forms Godrej Fund Management & Godrej Residential Investment Program II (Grip II) -Grip II acquires 80 percent equity in Godrej Greenview Housing, Thane

- **State Bank of India (SBI)** has sold 5 per cent stake in bourse NSE to Mauritius-based Veracity Investments for Rs 911 crore, valuing the exchange at over Rs 18,200 crore. The bank sold 22.50 lakh equity shares of National Stock Exchange (NSE), priced at Rs 4,050 per unit to Veracity Investments totalling Rs 911.25 crore. Post this transaction, SBI holds 5.19 per cent stake in NSE while our subsidiary SBI Capital Markets Limited holds another 4.33 per cent in the NSE

- **Adani Transmission** Signed agreement with GMR Energy to acquire 74 percent stake in Maru Transmission. Company has option to acquire 100 percent stake in Maru Transmission Company Cost of acquisition at Rs 44.66 crore (100 percent stake valued at Rs 60.35 crore)

• Jubilant Industries says

-Unit Jubilant Agri & Consumer Products discontinues operations in Kapasan, Rajasthan

Kapasan unit is an unlisted subsidiary of company

Manufacturing operations temporarily suspended due to unfavourable market conditions

Revenue contributed by unit in FY16 was Rs 4 crore, net worth Rs 50.43 crore

- **Biocon** is banking on four advanced programmes aimed at treating cancer, diabetes and psoriasis to emerge as a leading global player in the field of biosimilars. The company is bullish on the four programmes to provide it an early mover advantage in an over USD 30 billion addressable market.

- **Snowman Logistics Ltd** has announced that the company is planning to invest approximately Rs.17 crores on the new project at Krishnapatnam. The mode of financing will be through internal accruals.

- **Chilean Industrial Production** rose to 2.1%, from -1.2% in the preceding month. Analysts had expected Chilean Industrial Production to rise to 2.7% last month.

- **U.S. index of national factory activity** rose to 53.2 from 51.3 the month before. The reading was above expectations of 51.4 from a Reuters poll. A reading above 50 indicates expansion in the manufacturing sector and a reading below 50 indicates contraction

- **U.S. Construction Spending** rose to a seasonally adjusted -0.8%, from -2.0% in the preceding month whose figure was revised down from -1.8%. Analysts had expected U.S. Construction Spending to rise to 0.6% last month.

- **Brazilian Industrial Production** fell to -7.8%, from -6.9% in the preceding month whose figure was revised up from -7.2%. Analysts had expected Brazilian Industrial Production to fall to -8.0% last month.

- **Eurostat said that the rate of unemployment** fell to a seasonally adjusted 10.1%, from 10.2% in the preceding month. Analysts had expected the unemployment rate to fall to 10.1% last month.

- **U.K. the manufacturing PMI** rose to 52.1, from 50.1 in the preceding month. Analysts had expected the manufacturing PMI to fall to 49.9 last month.

Economic Calendar

Country	Monday 4th July 16	Tuesday 5th July 16	Wednesday 6th July 16	Thursday 7th July 16	Friday 8th July 16
US	Factory Orders m/m.	Final Services PMI , IBD/TIPP Economic Optimism .	ADP Non-Farm Employment Change , Trade Balance, FOMC Meeting Minutes .	Unemployment Claims , JOLTS Job Openings ,Crude Oil Inventories .	Average Hourly Earnings m/m , Non-Farm Employment Change ,Unemployment Rate , Consumer Credit m/m More .
UK/EURO ZONE	Spanish Unemployment Change ,Sentix Investor Confidence , Construction PMI , PPI m/m .	Spanish Services PMI , Italian Services PMI , French Final Services PMI , German Final Services PMI , Services PMI , BOE Financial Stability Report .	French Gov Budget Balance , French Trade Balance , Housing Equity Withdrawal q/q .	German Industrial Production m/m ,Halifax HPI m/m , Manufacturing Production m/m , FPC Meeting Minutes , Industrial Production m/m .	German Trade Balance ,Italian Industrial Production m/m , Goods Trade Balance , French 10- y Bond Auction , 10-y Bond Auction .
INDIA					



(Regn. No. : INP 000004011)

Narnolia Securities Ltd.

Narnolia Research Lab

Stellar IT Park | 5th Floor | Office Space No. 6 | Tower-IIInd Plot
No. C-25 | Sector-62 | Noida | Ph : 0120-4215110

Narnolia Securities Ltd.

201 | 2nd Floor | Marble Arch Building | 236B -AJC Bose Road Kolkata-
700 020 Ph : 033-40501500
Email : narnolia@narnolia.com website :www.narnolia.com