

SGX NIFTY : 7829 (12 Pt Down)

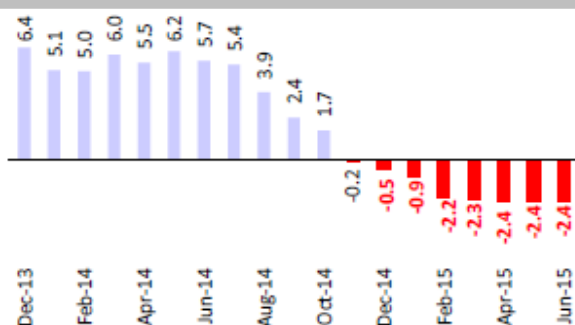
Quote of the Day

"Some people seem to think there's no trouble just because it hasn't happened yet. If you jump out the window at the 42nd floor and you're still doing fine as you pass the 27th floor, that doesn't mean you don't have a serious problem. I would want to address the problem right now."

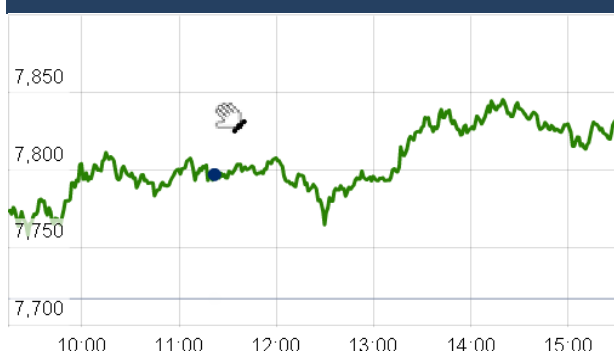
Charlie Munger

Chart of the Day

WPI Trend



Index Action Nifty (3th Sept 15)



Index

Contents	Page	Coverage
News	2	Update
Economic Calendar	3	Update

Market

Name	Value	Change
Sensex	25,764.78	311.12
Nifty	7823.00	106.00
DOW	16,374.76	23.38
NASDAQ	4,733.50	(16.48)
CAC	4,653.73	98.87
DAX	10,317.84	269.79
FTSE	6,194.10	110.79
NIKKIE	18,072.87	(109.82)
HANG SENG	21,051.91	116.97
EW ALL SHARE	13623.7	164.84

Instituional Turnover

FII

Investor	Buy(Cr.)	Sale(Cr.)	Net(Cr.)
03-Sep-15	4573.60	6147.02	(1573.42)
Sept,15	37316.55	39616.51	(2299.96)
2015	758808.10	738956.85	19851.25

DII

Investor	Buy(Cr.)	Sale(Cr.)	Net(Cr.)
03-Sep-15	2253.96	1373.69	880.27
Sept,15	15792.35	14354.72	1437.63
2015	292580.59	265440.42	27140.17

Commodity Price

Commodity/Currencies	Value	Change
GOLD	26380.00	↑
SILVER	35380.00	↑
CRUDEOIL	46.36	↓
COPPER	352.10	↑
NATURALGAS	180.50	↑
DOLLAR/RS.	66.24	↑
EURO/RS.	73.57	↑
POUND/RS.	100.83	↑

Market Snapshot

Top Price Performers

Top Performers 1D	% Change	Top Performers 1W	% Change	Top Performers 1M	% Change
CAREERP	19.96	ALPHAGEO	31.43	ORISSASP	75.75
WEIZFOREX	15.88	STEERINTER	30.50	JUBLINDS	57.57
KITEX	15.73	JINDRILL	30.33	ENERGYDEV	47.20
ARIHANT	13.25	DISHMAN	28.08	DSINVEST	44.64
UNICHEMLAB	13.20	WINSOMEDJ	23.53	SHRGLTR	41.56

Worst Price Performers

Worst Performers 1D	% Change	Worst Performers 1W	% Change	Worst Performers 1M	% Change
AMTEKAUTO	(34.81)	AMTEKAUTO	(41.08)	AMTEKAUTO	(81.02)
DECNGOLD	(22.52)	DECNGOLD	(35.93)	AHMEDFORGE	(63.91)
BIRLACOT	(20.00)	OMNITECH	(24.79)	AMTEKINDIA	(62.04)
CALSREF	(12.50)	JMTAUTOLDT	(22.54)	KGL	(56.83)
SHIV-VANI	(10.63)	AMTEKINDIA	(22.40)	JYOTISTRUC	(55.03)

Top News

- **Kalyani Steels Mgt Guideline** : Chinese steel companies are dumping steel into India at prices 25 percent below those quoted by domestic players

The price cut by NMDC is a step in the right direction, and that his company's capacity utilisation currently is 70 percent. Rs 200 or Rs 100 reduction in lumpy ore or fines translates into only Rs 150 in the final price of steel . Total availability of iron ore is at the rate of around 22 million tonne per year in Karnataka which at its peak used to be around 55 million tonne and the total requirement of Karnataka is around 35-36 million tonne.

- **Caplin Point Laboratories** has received approval from Brazil's National Health Surveillance Agency Anvisa for its sterile injectable site at Chennai. The approval grants access to the company to register and market its products at the large and growing Brazilian Pharmaceutical market. The facility, capable of manufacturing liquid injectable in vials, ampoules, lyophilized vials and ophthalmic dosages, was also recently approved by EU-GMP in July.

- **Mahindra Holidays and Resorts India** has decided to further increase its stake in a subsidiary. MHRIL has completed, on September 02, necessary formalities for increasing its stake to 83.20 percent in Holiday Club Resorts Oy, Finland (HCR) through its overseas subsidiary. Consequent to this transaction, HCR and HCR Management Oy, Finland, became subsidiaries of the company with immediate effect.

- **IRB Infrastructure Developers** has executed concession agreement with NHAI for Rs 2,650-crore project of six laning of Agra-Etawah Bypass section in Uttar Pradesh. The company, has now executed Concession Agreement with NHAI for the project of six-laning of Agra-Etawah Bypass section of NH-2 (from km 199.660 to km 323.525) in the state of Uttar Pradesh under NHDP Phase-V on BOT (Toll) mode

- **Ratnamani Metals & Tubes** has received orders for supply of CS pipes from L&T amounting Rs 528 crore which shall be completed by June 2017.

- **Deep Industries** bags order worth USD 13 mn from ONGC
Deep Industries has received Notification of Award for charter hiring of 01 No. of 1000HP Mobile Drilling Rig for Ahmedabad Asset of ONGC for a period of Three years, the total value of the said award is of USD 12.99mn. The Company has also received Notification of Award for charter hiring of 01 No. of Work Over Rig for Ahmedabad Asset for a period of One year, the total value of the said award is of INR 2.72 Cr.Source

- **National Buildings Construction Corporation (NBCC) Ltd** has informed that the Company has secured total business amounting Rs 386.78 Cr (approx) from various clients in the month of August, 2015.

- **U.S. Bureau of Economic Analysis** said that the trade deficit declined to a seasonally adjusted \$41.86 billion in July from a deficit of \$45.21 billion in June, whose figure was revised from a previously reported deficit of \$43.8 billion.

- **U.S. Department of Labor** said the number of individuals filing for initial jobless benefits in the week ending August 29 increased by 12,000 to a seasonally adjusted 282,000 from the previous week's total of 270,000. Analysts had expected initial jobless claims to rise by 5,000 to 275,000 last week.

- **Eurostat** said retail sales increased by a seasonally adjusted 0.4% in July, missing forecasts for a rise of 0.6%. Retail sales fell by 0.2% in June, whose figure was revised from a previously reported decline of 0.6%.

- **Markit** said the seasonally adjusted Markit/CIPS Services Purchasing Managers Index declined to 55.6 last month from a reading of 57.4 in July. Analysts had expected the index to rise to 57.6 in August.

- The trade gap narrowed 7.4 percent to \$41.9 billion, the smallest since February. June's trade deficit was revised to \$45.2 billion from the previously reported \$43.8 billion.

Economic Calendar

Country	Monday 31th Aug 15	Tuesday 1th Sept 15	Wednesday 2th Sept 15	Thursday 3th Sept 15	Friday 4th Sept 15
US	Chicago PMI .	Final Manufacturing PMI , ISM Manufacturing PMI , Construction Spending m/m , IBD/TIPP Economic Optimism , ISM Manufacturing Prices , Total Vehicle Sales .	Revised Nonfarm Productivity q/q , ADP Non-Farm Employment Change , Revised Unit Labor Costs q/q , Factory Orders m/m , Crude Oil Inventories .	Challenger Job Cuts y/y , Trade Balance , Unemployment Claims , Final Services PMI , ISM Non-Manufacturing PMI , Natural Gas Storage , Beige Book .	Non-Farm Employment Change , Unemployment Rate , Average Hourly Earnings m/m.
UK/EURO ZONE	CPI Flash Estimate y/y , Core CPI Flash Estimate y/y , Italian Retail Sales m/m .	Spanish Manufacturing PMI , Italian Manufacturing PMI , French Final Manufacturing PMI , German Unemployment Change , German Final Manufacturing PMI , Final Manufacturing PMI , Manufacturing PMI , Net Lending to Individuals m/m , M4 Money Supply m/m , Mortgage Approvals , Unemployment Rate .	German Retail Sales m/m , Spanish Unemployment Change , Halifax HPI m/m , PPI m/m , BRC Shop Price Index y/y .	Spanish Services PMI , Italian Services PMI , French Final Services PMI , German Final Services PMI , Final Services PMI , Services PMI , Retail Sales m/m , Spanish 10-y Bond Auction , Minimum Bid Rate , ECB Press Conference .	German Factory Orders m/m , Retail PMI , Trade Balance , Consumer Inflation Expectations , Revised GDP q/q , French 10-y Bond Auction .
INDIA	GDP Data	Auto sales No, HSBC Manufacturing PMI no , CAD Data.	Auto sales No .		

Narnolia Securities Ltd.

Narnolia Research Lab

Stellar IT Park | 5th Floor | Office Space No. 6 | Tower-I/nd Plot No. C-25 | Sector-62 | Noida
| Ph : 0120-4215110

Central Strategy Desk - Kolkata

124 | 1st Floor | 7/1 Lords Sinha Road | Kolkata - 71
Ph : 033-22821500 | M : 93347 14418, 98302 69810