

SGX NIFTY : 8126.50 (51 Pt Up)

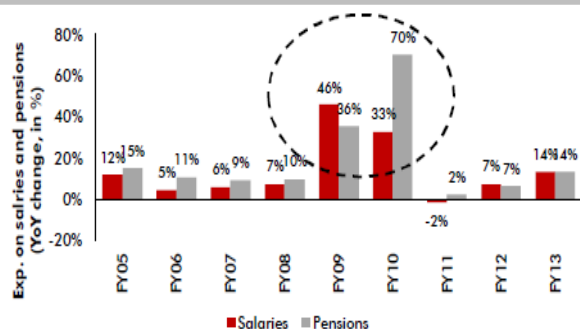
Quote of the Day

"The the ideal business is one that generates very high returns on capital and can invest that capital back into business at equally high rates. Imagine a \$100 million business that earns 20% in one year, reinvests the \$20 million profit and in the next year earns 20% of \$120 million and so forth."

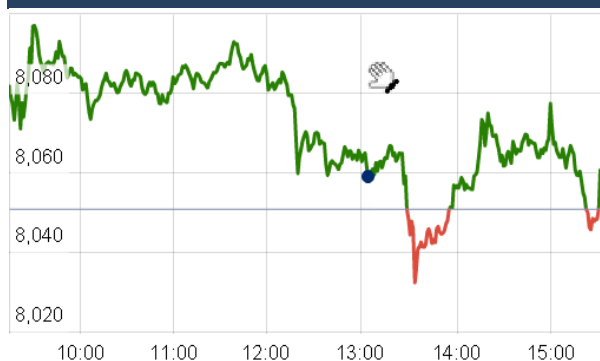
Warren Buffett

Chart of the Day

Govt Expenditure Trend



Index Action Nifty (3th Nov 15)



Index

| Contents | Page | Coverage |
|-------------------|------|----------|
| News | 2 | Update |
| Economic Calendar | 3 | Update |

Market

| Name | Value | Change |
|--------------|-----------|--------|
| Sensex | 26,590.59 | 31.44 |
| Nifty | 8060.70 | 9.90 |
| DOW | 17,048.49 | 33.74 |
| NASDAQ | 5,145.13 | 17.98 |
| CAC | 4,936.13 | 19.97 |
| DAX | 10,951.15 | 0.48 |
| FTSE | 6,383.61 | 21.81 |
| NIKKIE | 19,074.05 | 390.81 |
| HANG SENG | 23,003.05 | 434.62 |
| EW ALL SHARE | 13998.08 | 44.79 |

Instituional Turnover

FII

| Investor | Buy(Cr.) | Sale(Cr.) | Net(Cr.) |
|-----------|-----------|-----------|-----------|
| 03-Nov-15 | 3171.23 | 3621.07 | (449.84) |
| Nov,15 | 6429.23 | 7151.74 | (722.51) |
| 2015 | 980804.99 | 985746.72 | (4941.73) |

DII

| Investor | Buy(Cr.) | Sale(Cr.) | Net(Cr.) |
|-----------|-----------|-----------|----------|
| 03-Nov-15 | 1603.67 | 1253.36 | 350.31 |
| Nov,15 | 2939.23 | 2443.54 | 495.69 |
| 2015 | 396527.74 | 346563.90 | 49963.84 |

Commodity Price

| Commodity/Currencies | Value | |
|----------------------|----------|---|
| GOLD | 25919.00 | ↓ |
| SILVER | 35820.00 | ↓ |
| CRUDEOIL | 47.88 | ↓ |
| COPPER | 340.15 | ↑ |
| NATURALGAS | 148.80 | ↑ |
| DOLLAR/RS. | 65.65 | ↑ |
| EURO/RS. | 71.18 | ↓ |
| POUND/RS. | 101.09 | ↓ |

Market Snapshot

Top Price Performers

| Top Performers 1D | % Change | Top Performers 1W | % Change | Top Performers 1M | % Change |
|-------------------|----------|-------------------|----------|-------------------|----------|
| BIRLACOT | 25.00 | SHYAMTEL | 43.23 | DALMIASUG | 163.38 |
| ZENITHBIR | 20.00 | KOTHARIPRO | 39.59 | DWARAKESH | 112.35 |
| SHYAMTEL | 19.92 | NAVINFLUOR | 29.57 | SEZAL | 75.80 |
| NILKAMAL | 19.74 | IBIPL | 28.00 | UPERGANGES | 63.59 |
| KOHINOOR | 17.75 | SEZAL | 27.17 | MAWANASUG | 60.64 |

| Worst Performers 1D | % Change | Worst Performers 1W | % Change | Worst Performers 1M | % Change |
|---------------------|----------|---------------------|----------|---------------------|----------|
| FORTISFIN | (11.37) | SARLAPOLY | (89.13) | SARLAPOLY | (88.41) |
| RAMAPHOSP | (11.20) | EROSMEDIA | (33.68) | RUBYMILLS | (52.19) |
| SHIVAMAUTO | (10.88) | TIRUMALCHM | (29.94) | EROSMEDIA | (51.15) |
| STERLINBIO | (10.34) | XLENERGY | (22.14) | GLOBOFFS | (40.81) |
| PRIMESECU | (9.52) | ORISSASP | (21.81) | ORISSASP | (39.08) |

Top News

• **KRBL Mgt Guideline** : Iran government today lifted ban on import of rice . Mgt said that the lift in ban by Iran is a positive for the rice industry and will boost rice exports. Due to availability of excess rice stocks, Iranian authorities had suspended imports of rice from the rest of the world in October 2014. Mgt said that the rice industry had been badly impacted due to the ban as Iran used to import nearly 1.2 million tonnes of rice from the Indian rice manufacturers. Mgt expects 800 to a million tonne rice export to Iran post the upliftment of ban at the ongoing international prices. Company has 5-7 percent exposure to Iran, which contributes 5 to 6 percent to the company's turnover. The company will work on increasing its exposure to Iran with the removal of import ban .

• **UBL Mgt Guideline** : The company said it expects to reduce debt by another Rs 1000 crore in the next 12-18 months. It also plans to further divest non-core assets over the next two years. The company expects double digit volume growth in prestige segment. The company also said it is seeing higher growth in the premium segment. "Volumes for prestige-and-above was 7 percent and for popular segment it was negative 5 percent," the company said in its concall. The company will be back to positive low single digit growth in popular segment.

• **PVR Mgt Guideline** : PVR says the spend per head (SPH) in food and beverages (F&B) was relatively lower because of a lot of regional movies played in PVR Cinemas. "There is a direct correlation between the type of movie that you play and the type of consumer that comes to the cinemas, therefore, the amount that they spend on F&B differs . Big Hollywood films like Spectre, Star Wars, Ranbir Kapoor's Tamasha, Dilwale, Bajirao Mastani and Salman Khan's movie coming on Diwali--Prem Ratan Dhan Payo—will be a temporary blip in the F&B income . The company garnered about 18.8 million footfalls in Q2 and F&B income stands at about Rs 70 per person,

• **Relaxo Footwears Mgt Guideline** : The company says premiumisation of products has led to a double digit growth in volumes this quarter. Mgt hopes to improve premiumisation and expects a 100 percent growth in online sales going forward. Mgt says capital expenditure will mainly be demand-driven and that growth in the first half will continue in the next two quarters

• **HIL** has commissioned and commenced the commercial production at its newly established AAC Blocks manufacturing facility at Timmapur, Telangana with an installed capacity of 1.5 lakh Cum/annum.

• **The petition in Supreme Court pertains to the alleged undervaluing of Hindustan Zinc (HZL) assets** when 26 percent of its stake was sold to Sterlite Industries, part of Vedanta Group, for Rs 445 crore back in 2002.

• **Reserve Bank** said foreign investors can invest up to 30 percent of paid up capital of Petronet LNG Ltd . Foreign Institutional Investors (FIIs)/Registered Foreign Portfolios Investors (RFPIs) can now invest up to 30 percent of the paid up capital of Petronet LNG Limited under the Portfolio Investment Scheme (PIS),

• **U.K. construction purchasing managers' index** declined to a seasonally adjusted 58.8 last month from a reading of 59.9 in September. Economists had expected the index to fall to 58.8 in October.

• **South Korean CPI** rose to a seasonally adjusted annual rate of 0.9%, from 0.6% in the preceding month. Analysts had expected South Korean CPI to rise to 0.8% last month.

• **Turkish Statistical Institute said that Turkish CPI** rose to a seasonally adjusted 1.55%, from 0.89% in the preceding month. Analysts had expected Turkish CPI to rise 1.35% last month.

• **Spain's Employment Ministry said the number of unemployed people** rose by a seasonally adjusted 82,300 last month, compared to expectations for an increase of 70,300. The number of unemployed people rose by 26,100 in September.

Result Calendar Q2FY16

| BSE Code | Company Name | Date | BSE Code | Company Name | Date |
|----------|--------------|----------|----------|--------------|----------|
| 532268 | ACCELYA | 4-Nov-15 | 517174 | HONAUT | 4-Nov-15 |
| 532828 | AMDIND | 4-Nov-15 | 522064 | HONDAPOWER | 4-Nov-15 |
| 527001 | ASHAPURMIN | 4-Nov-15 | 500116 | IDBI | 4-Nov-15 |
| 500477 | ASHOKLEY | 4-Nov-15 | 509162 | INDAG | 4-Nov-15 |
| 532380 | BABA | 4-Nov-15 | 506131 | INDIACO | 4-Nov-15 |
| 500032 | BAJAJHIND | 4-Nov-15 | 501700 | INDIANVSH | 4-Nov-15 |
| 503722 | BANSWRAS | 4-Nov-15 | 532717 | INDOTECH | 4-Nov-15 |
| 523186 | BAPACK | 4-Nov-15 | 501298 | INDPRUD | 4-Nov-15 |
| 500043 | BATAINDIA | 4-Nov-15 | 504810 | INFORTEC | 4-Nov-15 |
| 509438 | BENARAS | 4-Nov-15 | 500211 | INSILCO | 4-Nov-15 |
| 504646 | BGWTATO | 4-Nov-15 | 533181 | ISFT | 4-Nov-15 |
| 514215 | BINNY | 4-Nov-15 | 507580 | IVP | 4-Nov-15 |
| 500335 | BIRLACORPN | 4-Nov-15 | 512237 | JAICORPLTD | 4-Nov-15 |
| 533006 | BIRLACOT | 4-Nov-15 | 539005 | JAYATMA | 4-Nov-15 |
| 522105 | BIRLAPREC | 4-Nov-15 | 506943 | JBCHEPHARM | 4-Nov-15 |
| 526225 | BLOOM | 4-Nov-15 | 524592 | JDORGOCHEM | 4-Nov-15 |
| 526925 | BOBSHELL | 4-Nov-15 | 500380 | JKLAKSHMI | 4-Nov-15 |
| 524370 | BODALCHEM | 4-Nov-15 | 530985 | JPTSEC | 4-Nov-15 |
| 524440 | CAMEXLTD | 4-Nov-15 | 512399 | KAPASHI | 4-Nov-15 |
| 532483 | CANBK | 4-Nov-15 | 507794 | KHAICHEM | 4-Nov-15 |
| 533260 | CAREERP | 4-Nov-15 | 537750 | KIRANVYPAR | 4-Nov-15 |
| 533272 | CEBBCO | 4-Nov-15 | 526423 | KRITIIND | 4-Nov-15 |
| 532548 | CENTURYPLY | 4-Nov-15 | 533210 | KRITINUT | 4-Nov-15 |
| 500110 | CHENNPETRO | 4-Nov-15 | 500249 | KSBPUMPS | 4-Nov-15 |
| 502445 | CITADEL | 4-Nov-15 | 530577 | LADDERUP | 4-Nov-15 |
| 524506 | CORALAB | 4-Nov-15 | 524000 | MAGMA | 4-Nov-15 |
| 523100 | COSMOFE | 4-Nov-15 | 532525 | MAHABANK | 4-Nov-15 |
| 514030 | DEEPAKSP | 4-Nov-15 | 512337 | MAHSHRE | 4-Nov-15 |
| 500120 | DIAMINESQ | 4-Nov-15 | 500268 | MANALIPETC | 4-Nov-15 |
| 504351 | EMPOWER | 4-Nov-15 | 531642 | MARICO | 4-Nov-15 |
| 532178 | ENGINERSIN | 4-Nov-15 | 538942 | MERCANTILE | 4-Nov-15 |
| 500630 | ESSARPORTS | 4-Nov-15 | 533259 | MICROSEC | 4-Nov-15 |
| 532843 | FORTIS | 4-Nov-15 | 538962 | MINDACORP | 4-Nov-15 |
| 533275 | GAL | 4-Nov-15 | 537092 | MODEX | 4-Nov-15 |
| 500155 | GARDENSILK | 4-Nov-15 | 533080 | MOLDTKPAC | 4-Nov-15 |
| 500655 | GARWARPOLY | 4-Nov-15 | 500288 | MOREPENLAB | 4-Nov-15 |
| 532764 | GEECEE | 4-Nov-15 | 532362 | NAGPI | 4-Nov-15 |
| 533150 | GODREJPROP | 4-Nov-15 | 512522 | NEPTEXP | 4-Nov-15 |
| 509546 | GRAVISSHO | 4-Nov-15 | 513683 | NEYVELILIG | 4-Nov-15 |
| 538979 | GRNLAMIND | 4-Nov-15 | 519491 | OCEAGRO | 4-Nov-15 |
| 532139 | GTEIT | 4-Nov-15 | 502165 | OCL | 4-Nov-15 |
| 523768 | GUJBOROS | 4-Nov-15 | 532880 | OMAXE | 4-Nov-15 |
| 507960 | GUJHOTE | 4-Nov-15 | 538860 | PANAFIC | 4-Nov-15 |
| 532333 | HBPOR | 4-Nov-15 | 530555 | PARACABLES | 4-Nov-15 |
| 509895 | HINDMILL | 4-Nov-15 | 500459 | PGHH | 4-Nov-15 |
| 504713 | HINDWRS | 4-Nov-15 | 509084 | PHOTON | 4-Nov-15 |

| | | | | | |
|--------|------------|----------|--------|------------|----------|
| 539150 | PNCINFRA | 4-Nov-15 | 533644 | UJAAS | 4-Nov-15 |
| 531454 | POLYLINK | 4-Nov-15 | 531091 | UNITDCR | 4-Nov-15 |
| 532934 | PPAP | 4-Nov-15 | 517146 | USHAMART | 4-Nov-15 |
| 523539 | PRECWIRE | 4-Nov-15 | 532156 | VAIBHAVGBL | 4-Nov-15 |
| 526109 | PRICOL | 4-Nov-15 | 530521 | VIRAT | 4-Nov-15 |
| 521149 | PRIMEURB | 4-Nov-15 | 509026 | VJTFEDU | 4-Nov-15 |
| 524580 | PRIYALT | 4-Nov-15 | 532757 | VOLTAMP | 4-Nov-15 |
| 512461 | PUNCTRD | 4-Nov-15 | 502986 | VTL | 4-Nov-15 |
| 506618 | PUNJABCHEM | 4-Nov-15 | 531217 | WESTE | 4-Nov-15 |
| 517522 | RAJGLOWIR | 4-Nov-15 | 512297 | WHELTEX | 4-Nov-15 |
| 526095 | RALEGRA | 4-Nov-15 | 500238 | WHIRLPOOL | 4-Nov-15 |
| 500356 | RAMANEWS | 4-Nov-15 | 519224 | WILLAMAGOR | 4-Nov-15 |
| 523289 | RAMAVISION | 4-Nov-15 | 519214 | WILLIMFI | 4-Nov-15 |
| 520111 | RATNAMANI | 4-Nov-15 | 522108 | YUKEN | 4-Nov-15 |
| 520073 | RAUNAQUAU | 4-Nov-15 | 505163 | ZFSTEERING | 4-Nov-15 |
| 500390 | RELINFRA | 4-Nov-15 | 506178 | ZKHATAUE | 4-Nov-15 |
| 530919 | REMSONSIND | 4-Nov-15 | 506190 | ZSARVAMA | 4-Nov-15 |
| 535322 | REPCOHOME | 4-Nov-15 | 531866 | AAGAMCAP | 5-Nov-15 |
| 531888 | REXNORD | 4-Nov-15 | 524208 | AARTIIND | 5-Nov-15 |
| 524480 | RIDDHI | 4-Nov-15 | 523204 | ABAN | 5-Nov-15 |
| 533017 | RMMIL | 4-Nov-15 | 531525 | ACESOFT | 5-Nov-15 |
| 532699 | ROHLTD | 4-Nov-15 | 524091 | ACRYSIL | 5-Nov-15 |
| 532710 | SADBHAV | 4-Nov-15 | 539189 | ADHBHUTIN | 5-Nov-15 |
| 539346 | SADBHIN | 4-Nov-15 | 514113 | ADINATH | 5-Nov-15 |
| 526521 | SANGHIIND | 4-Nov-15 | 500463 | AGCNET | 5-Nov-15 |
| 531323 | SANTASPN | 4-Nov-15 | 506235 | ALEMBICLTD | 5-Nov-15 |
| 514280 | SANTETX | 4-Nov-15 | 506767 | ALKYLAMINE | 5-Nov-15 |
| 539404 | SATIN | 4-Nov-15 | 532749 | ALLCARGO | 5-Nov-15 |
| 523598 | SCI | 4-Nov-15 | 532633 | ALLSEC | 5-Nov-15 |
| 539277 | SHALINI | 4-Nov-15 | 507525 | AMRITCORP | 5-Nov-15 |
| 513097 | SHBCLQ | 4-Nov-15 | 590006 | AMRUTANJAN | 5-Nov-15 |
| 532945 | SHRIRAMEPC | 4-Nov-15 | 531878 | ANJANIFIN | 5-Nov-15 |
| 503229 | SIMPLXREA | 4-Nov-15 | 532259 | APARINDS | 5-Nov-15 |
| 504375 | SOFTBPO | 4-Nov-15 | 517096 | APLAB | 5-Nov-15 |
| 532872 | SPARC | 4-Nov-15 | 511064 | APLAYA | 5-Nov-15 |
| 519242 | SRDAPRT | 4-Nov-15 | 512437 | APOLLOFI | 5-Nov-15 |
| 530931 | STANPACK | 4-Nov-15 | 539151 | ARFIN | 5-Nov-15 |
| 506105 | STANROS | 4-Nov-15 | 531179 | ARMANFIN | 5-Nov-15 |
| 530759 | STERTOOLS | 4-Nov-15 | 512273 | ARONICOMM | 5-Nov-15 |
| 506222 | STYABS | 4-Nov-15 | 500101 | ARVIND | 5-Nov-15 |
| 524542 | SUKHJITS | 4-Nov-15 | 519174 | ASHAI | 5-Nov-15 |
| 530845 | SUNSHIEL | 4-Nov-15 | 521076 | ASIL | 5-Nov-15 |
| 530185 | SURATEX | 4-Nov-15 | 532830 | ASTRAL | 5-Nov-15 |
| 512011 | TEATIME | 4-Nov-15 | 512433 | ASUTENT | 5-Nov-15 |
| 532375 | TIPSINDLTD | 4-Nov-15 | 532668 | AURIONPRO | 5-Nov-15 |
| 539008 | TIRUFIN | 4-Nov-15 | 531336 | AUROCOK | 5-Nov-15 |
| 517562 | TRIGYN | 4-Nov-15 | 505010 | AUTOAXLES | 5-Nov-15 |
| 532513 | TVSELECT | 4-Nov-15 | 512149 | AVANCE | 5-Nov-15 |
| 530131 | UDAICEMENT | 4-Nov-15 | 539288 | AVI | 5-Nov-15 |

| | | | | | |
|--------|------------|----------|--------|------------|----------|
| 500031 | BAJAJELEC | 5-Nov-15 | 506640 | GUJCMDS | 5-Nov-15 |
| 512261 | BAJGLOB | 5-Nov-15 | 526965 | GUJCRAFT | 5-Nov-15 |
| 512404 | BENGALS | 5-Nov-15 | 539336 | GUJGAS | 5-Nov-15 |
| 512332 | BIRLACAP | 5-Nov-15 | 524314 | GUJTERC | 5-Nov-15 |
| 500060 | BIRLAERIC | 5-Nov-15 | 506879 | GUJTHEM | 5-Nov-15 |
| 501430 | BOMBCYC | 5-Nov-15 | 532543 | GULFPETRO | 5-Nov-15 |
| 532816 | BROADCAST | 5-Nov-15 | 509073 | HATHWAYB | 5-Nov-15 |
| 514045 | BSL | 5-Nov-15 | 526967 | HEERAISP | 5-Nov-15 |
| 524742 | CAPPL | 5-Nov-15 | 500186 | HINDOILEXP | 5-Nov-15 |
| 500870 | CASTROLIND | 5-Nov-15 | 504036 | HIRECT | 5-Nov-15 |
| 500083 | CENTEXT | 5-Nov-15 | 532835 | ICRA | 5-Nov-15 |
| 530309 | CHANDRAP | 5-Nov-15 | 517044 | IDM | 5-Nov-15 |
| 521244 | CHITRTX | 5-Nov-15 | 517380 | IGARASHI | 5-Nov-15 |
| 530191 | CHROMATIC | 5-Nov-15 | 531253 | INDGELA | 5-Nov-15 |
| 530457 | CINERAD | 5-Nov-15 | 509051 | INDINFO | 5-Nov-15 |
| 500087 | CIPLA | 5-Nov-15 | 524342 | INDOBORAX | 5-Nov-15 |
| 506390 | CLNINDIA | 5-Nov-15 | 523586 | INDTONER | 5-Nov-15 |
| 530067 | CNSDSEC | 5-Nov-15 | 524614 | INDXTRA | 5-Nov-15 |
| 511413 | CREST | 5-Nov-15 | 500210 | INGERRAND | 5-Nov-15 |
| 500480 | CUMMINSIND | 5-Nov-15 | 526871 | INTECCAP | 5-Nov-15 |
| 532640 | CYBERMEDIA | 5-Nov-15 | 519606 | INTEGFD | 5-Nov-15 |
| 533309 | DALMIABHA | 5-Nov-15 | 531337 | IRISMEDIA | 5-Nov-15 |
| 531227 | DECOMIC | 5-Nov-15 | 509496 | ITDCEM | 5-Nov-15 |
| 500645 | DEEPAKFERT | 5-Nov-15 | 531695 | JAGPRO | 5-Nov-15 |
| 507717 | DHANUKA | 5-Nov-15 | 505212 | JAINEX | 5-Nov-15 |
| 500068 | DISAQ | 5-Nov-15 | 501311 | JAYBHCR | 5-Nov-15 |
| 500840 | EIHOTEL | 5-Nov-15 | 514034 | JBFIND | 5-Nov-15 |
| 523329 | ELDEHSG | 5-Nov-15 | 532605 | JBMA | 5-Nov-15 |
| 500128 | ELECTCAST | 5-Nov-15 | 532162 | JKPAPER | 5-Nov-15 |
| 526608 | ELECTHERM | 5-Nov-15 | 508929 | JOYREALTY | 5-Nov-15 |
| 524588 | EMEDTECH | 5-Nov-15 | 534600 | JTLINFRA | 5-Nov-15 |
| 533477 | ENKEIWHEL | 5-Nov-15 | 533155 | JUBLFOOD | 5-Nov-15 |
| 512135 | ENSSI | 5-Nov-15 | 504076 | JYOTI | 5-Nov-15 |
| 500133 | ESABINDIA | 5-Nov-15 | 531780 | KACL | 5-Nov-15 |
| 505790 | FAGBEARING | 5-Nov-15 | 522259 | KALINDEE | 5-Nov-15 |
| 507910 | FIBERWEB | 5-Nov-15 | 522287 | KALPATPOWR | 5-Nov-15 |
| 539098 | FILTRA | 5-Nov-15 | 524604 | KAMRLAB | 5-Nov-15 |
| 533638 | FLEXITUFF | 5-Nov-15 | 500236 | KANELIND | 5-Nov-15 |
| 532518 | FLORENCE | 5-Nov-15 | 507779 | KANPRPLA | 5-Nov-15 |
| 523574 | FRL | 5-Nov-15 | 539276 | KAYA | 5-Nov-15 |
| 570002 | FRLDVR | 5-Nov-15 | 531784 | KCLINFRA | 5-Nov-15 |
| 526073 | GALXBRG | 5-Nov-15 | 533193 | KECL | 5-Nov-15 |
| 509557 | GARWALLROP | 5-Nov-15 | 517569 | KEI | 5-Nov-15 |
| 505255 | GMM | 5-Nov-15 | 500239 | KGDENIM | 5-Nov-15 |
| 500168 | GOODYEAR | 5-Nov-15 | 530771 | KLGCAP | 5-Nov-15 |
| 533263 | GREENPOWER | 5-Nov-15 | 532924 | KOLTEPATIL | 5-Nov-15 |
| 532775 | GTLINFRA | 5-Nov-15 | 523594 | KUNSTOFF | 5-Nov-15 |
| 522217 | GUJAPOLLO | 5-Nov-15 | 531288 | LEADFIN | 5-Nov-15 |
| 505712 | GUJAUTO | 5-Nov-15 | 531027 | LIBORD | 5-Nov-15 |

| | | | | | |
|--------|-------------|----------|--------|-------------|----------|
| 511593 | LIBORDFIN | 5-Nov-15 | 531887 | RAHME | 5-Nov-15 |
| 531633 | LINCOPH | 5-Nov-15 | 500354 | RAJSREESUG | 5-Nov-15 |
| 500255 | LML | 5-Nov-15 | 513558 | REALSTR | 5-Nov-15 |
| 533012 | LPDC | 5-Nov-15 | 503162 | RELCEMQ | 5-Nov-15 |
| 515059 | MADHUDIN | 5-Nov-15 | 517496 | RICOHQ | 5-Nov-15 |
| 511187 | MAHAINV | 5-Nov-15 | 500350 | RSWM | 5-Nov-15 |
| 531213 | MANAPPURAM | 5-Nov-15 | 590124 | RUNEECHA | 5-Nov-15 |
| 537800 | MANGIND | 5-Nov-15 | 533552 | RUPA | 5-Nov-15 |
| 539207 | MANPASAND | 5-Nov-15 | 500370 | SALORAINTL | 5-Nov-15 |
| 500248 | MAVIIND | 5-Nov-15 | 514234 | SANGAMIND | 5-Nov-15 |
| 523371 | MAWANASUG | 5-Nov-15 | 523710 | SAYAJIHOTL | 5-Nov-15 |
| 532852 | MCDHOLDING | 5-Nov-15 | 517360 | SBECYS | 5-Nov-15 |
| 531176 | MEFCOMCAP | 5-Nov-15 | 509423 | SEL | 5-Nov-15 |
| 531417 | MEGACOR | 5-Nov-15 | 530797 | SHGANEL | 5-Nov-15 |
| 539289 | MJCO | 5-Nov-15 | 520151 | SHREYAS | 5-Nov-15 |
| 539007 | MODI | 5-Nov-15 | 503804 | SHRIDINE | 5-Nov-15 |
| 503772 | MODWOOL | 5-Nov-15 | 521194 | SILINV | 5-Nov-15 |
| 530169 | MOHITPPR | 5-Nov-15 | 505729 | SINGER | 5-Nov-15 |
| 530167 | MONGIPA | 5-Nov-15 | 503811 | SIYSIL | 5-Nov-15 |
| 539199 | MOONGIPASEC | 5-Nov-15 | 533206 | SJVN | 5-Nov-15 |
| 539229 | MRSS | 5-Nov-15 | 500388 | SKPMIL | 5-Nov-15 |
| 532097 | MUKANDENGG | 5-Nov-15 | 500391 | SMDYECH | 5-Nov-15 |
| 532529 | NDTV | 5-Nov-15 | 538635 | SNOWMAN | 5-Nov-15 |
| 539251 | NIRVIKARA | 5-Nov-15 | 520057 | SONASTEER | 5-Nov-15 |
| 532698 | NITINSPIN | 5-Nov-15 | 533121 | SQSBFSI | 5-Nov-15 |
| 508924 | NORTHPR | 5-Nov-15 | 508998 | STEERINTER | 5-Nov-15 |
| 500672 | NOVARTIND | 5-Nov-15 | 526500 | STRGRENWO | 5-Nov-15 |
| 516082 | NRAGRINDQ | 5-Nov-15 | 520056 | SUNCLAYLTD | 5-Nov-15 |
| 532466 | OFSS | 5-Nov-15 | 533166 | SUNDARAM | 5-Nov-15 |
| 512626 | ORBTEXP | 5-Nov-15 | 532711 | SUNILHITEC | 5-Nov-15 |
| 531065 | OSWALOR | 5-Nov-15 | 521232 | SUNILTX | 5-Nov-15 |
| 539121 | PALCO | 5-Nov-15 | 511185 | SURYAKR | 5-Nov-15 |
| 508941 | PANCARBON | 5-Nov-15 | 522215 | SWISSGLA | 5-Nov-15 |
| 500162 | PARRYSUGAR | 5-Nov-15 | 526506 | SYSTMTC | 5-Nov-15 |
| 511176 | PARSHWANA | 5-Nov-15 | 533200 | TALWALKARS | 5-Nov-15 |
| 531120 | PATELENG | 5-Nov-15 | 512271 | TASHIND | 5-Nov-15 |
| 516092 | PDUMJEIND | 5-Nov-15 | 500800 | TATAGLOBAL | 5-Nov-15 |
| 503100 | PHOENIXLTD | 5-Nov-15 | 500470 | TATASTEEL | 5-Nov-15 |
| 531879 | PIONDIST | 5-Nov-15 | 523301 | TCPLPACK | 5-Nov-15 |
| 513403 | PMTELELIN | 5-Nov-15 | 509945 | THACKER | 5-Nov-15 |
| 531870 | POPULARES | 5-Nov-15 | 530199 | THEMISMED | 5-Nov-15 |
| 533178 | PRADIP | 5-Nov-15 | 533629 | TIJARIA | 5-Nov-15 |
| 513291 | PREMPIPES | 5-Nov-15 | 533258 | TIRUPATIINK | 5-Nov-15 |
| 531802 | PRERINFRA | 5-Nov-15 | 509953 | TRADWIN | 5-Nov-15 |
| 531735 | PRISMFN | 5-Nov-15 | 509003 | TRANOCE | 5-Nov-15 |
| 530281 | QUANTDIA | 5-Nov-15 | 500251 | TRENT | 5-Nov-15 |
| 532866 | QUINTEGRA | 5-Nov-15 | 532398 | UMESLTD | 5-Nov-15 |
| 531273 | RADHEDE | 5-Nov-15 | 504212 | UNIVCABLES | 5-Nov-15 |
| 514316 | RAGHUSYN | 5-Nov-15 | 539132 | VEGETABLE | 5-Nov-15 |

| | | | | | |
|--------|------------|----------|--------|------------|----------|
| 522267 | VJLAXMIE | 5-Nov-15 | 532759 | ATLANTA | 6-Nov-15 |
| 533427 | VMS | 5-Nov-15 | 524804 | AUROPHARMA | 6-Nov-15 |
| 524212 | WANBURY | 5-Nov-15 | 531541 | AVONLIFE | 6-Nov-15 |
| 590073 | WHEELS | 5-Nov-15 | 532395 | AXISCADES | 6-Nov-15 |
| 512022 | WINROC | 5-Nov-15 | 532989 | BAFNAPHARM | 6-Nov-15 |
| 511147 | WSFIN | 5-Nov-15 | 532507 | BAGFILMS | 6-Nov-15 |
| 530665 | ZENITHHE | 5-Nov-15 | 500102 | BALLARPUR | 6-Nov-15 |
| 512107 | ZGOLKOND | 5-Nov-15 | 523319 | BALMLAWRIE | 6-Nov-15 |
| 531404 | ZICOM | 5-Nov-15 | 519295 | BAMBINO | 6-Nov-15 |
| 513012 | ZJEETMAC | 5-Nov-15 | 500039 | BANCOINDIA | 6-Nov-15 |
| 512020 | ZSARACOM | 5-Nov-15 | 532134 | BANKBARODA | 6-Nov-15 |
| 503893 | ZSATYASL | 5-Nov-15 | 500048 | BEML | 6-Nov-15 |
| 503624 | ZSVARAJT | 5-Nov-15 | 531719 | BHAGCHEM | 6-Nov-15 |
| 511122 | 1STCUS | 6-Nov-15 | 531862 | BHARATAGRI | 6-Nov-15 |
| 524348 | AARTIDRUGS | 6-Nov-15 | 500103 | BHEL | 6-Nov-15 |
| 500488 | ABBOTINDIA | 6-Nov-15 | 524663 | BIBCL | 6-Nov-15 |
| 505665 | ABCBEARS | 6-Nov-15 | 500058 | BIHSPONG | 6-Nov-15 |
| 532682 | ABGSHIP | 6-Nov-15 | 532330 | BIOPAC | 6-Nov-15 |
| 532831 | ABHISHEK | 6-Nov-15 | 511607 | BIRSHLEDU | 6-Nov-15 |
| 532762 | ACE | 6-Nov-15 | 532485 | BLIL | 6-Nov-15 |
| 517356 | ACIIN | 6-Nov-15 | 531495 | BLUECOAST | 6-Nov-15 |
| 533330 | ACROPETAL | 6-Nov-15 | 508136 | BNALTD | 6-Nov-15 |
| 526711 | ADARSHPL | 6-Nov-15 | 500530 | BOSCHLTD | 6-Nov-15 |
| 538351 | AFEL | 6-Nov-15 | 514440 | BPTEX | 6-Nov-15 |
| 531147 | ALICON | 6-Nov-15 | 505690 | BRADYM | 6-Nov-15 |
| 530889 | ALKA | 6-Nov-15 | 533108 | BTTL | 6-Nov-15 |
| 531400 | ALMONDZ | 6-Nov-15 | 526652 | CALSREF | 6-Nov-15 |
| 513117 | AMFORG | 6-Nov-15 | 532834 | CAMLINFIN | 6-Nov-15 |
| 506248 | AMNPLST | 6-Nov-15 | 509486 | CAPRIHANS | 6-Nov-15 |
| 531761 | AMULEAS | 6-Nov-15 | 532902 | CCCL | 6-Nov-15 |
| 515055 | ANANTRAJ | 6-Nov-15 | 517544 | CENTUM | 6-Nov-15 |
| 500012 | ANDHRAPET | 6-Nov-15 | 526817 | CHEVIOT | 6-Nov-15 |
| 532910 | ANILLTD | 6-Nov-15 | 531775 | CISTRO | 6-Nov-15 |
| 531223 | ANJANI | 6-Nov-15 | 533288 | CLARIS | 6-Nov-15 |
| 512091 | ANSHNCO | 6-Nov-15 | 533407 | CNOVAPETRO | 6-Nov-15 |
| 523694 | APCOTEXIND | 6-Nov-15 | 520131 | COARO | 6-Nov-15 |
| 523537 | APMIN | 6-Nov-15 | 508571 | COCHMAL | 6-Nov-15 |
| 531364 | AQUAPIV | 6-Nov-15 | 532339 | COMPUSOFT | 6-Nov-15 |
| 532212 | ARCHIES | 6-Nov-15 | 505678 | CPECLTD | 6-Nov-15 |
| 526662 | ARENTERP | 6-Nov-15 | 509472 | CRAVATEX | 6-Nov-15 |
| 532935 | ARIES | 6-Nov-15 | 532173 | CYBERTECH | 6-Nov-15 |
| 531467 | ARNAVCORP | 6-Nov-15 | 500097 | DALMIASUG | 6-Nov-15 |
| 531297 | ARTEFACT | 6-Nov-15 | 523369 | DCMSRMIND | 6-Nov-15 |
| 517481 | ARTKPOW | 6-Nov-15 | 502137 | DECCANCE | 6-Nov-15 |
| 504390 | ARVRTRI | 6-Nov-15 | 506401 | DEEPAKNI | 6-Nov-15 |
| 533271 | ASHOKA | 6-Nov-15 | 506405 | DHARAMSI | 6-Nov-15 |
| 530355 | ASIANOI | 6-Nov-15 | 538432 | DIVINUS | 6-Nov-15 |
| 502015 | ASSOSTNB | 6-Nov-15 | 533146 | DLINKINDIA | 6-Nov-15 |
| 533138 | ASTEC | 6-Nov-15 | 522261 | DOLPHINOFF | 6-Nov-15 |

| | | | | | |
|--------|------------|----------|--------|-------------|----------|
| 534674 | DYNATECH | 6-Nov-15 | 531661 | HITTCO | 6-Nov-15 |
| 505200 | EICHERMOT | 6-Nov-15 | 500193 | HOTELEELA | 6-Nov-15 |
| 523127 | EIHAHOTELS | 6-Nov-15 | 532761 | HOVS | 6-Nov-15 |
| 532684 | EKC | 6-Nov-15 | 511194 | ICDSLTD | 6-Nov-15 |
| 532820 | ELAND | 6-Nov-15 | 535667 | IFINSEC | 6-Nov-15 |
| 524768 | EMMESSA | 6-Nov-15 | 531968 | IITLPROJ | 6-Nov-15 |
| 531502 | ESARIND | 6-Nov-15 | 533177 | IL&FSTRANS | 6-Nov-15 |
| 500134 | ESSAROIL | 6-Nov-15 | 509692 | INDIANCARD | 6-Nov-15 |
| 533704 | ESSARSHPNG | 6-Nov-15 | 530747 | INDOASIAF | 6-Nov-15 |
| 514060 | EVERTEX | 6-Nov-15 | 509709 | INTLCONV | 6-Nov-15 |
| 500650 | EXCELINDUS | 6-Nov-15 | 511391 | INTRGLB | 6-Nov-15 |
| 531252 | FARRYIND | 6-Nov-15 | 524400 | ISHITADR | 6-Nov-15 |
| 532768 | FIEMIND | 6-Nov-15 | 500213 | ITHL | 6-Nov-15 |
| 500940 | FINOLEXIND | 6-Nov-15 | 522285 | JAYNECOIND | 6-Nov-15 |
| 534757 | FOCUSIRL | 6-Nov-15 | 509715 | JAYSHREETEA | 6-Nov-15 |
| 531196 | GAGANPO | 6-Nov-15 | 539246 | JEL | 6-Nov-15 |
| 512443 | GANONTR | 6-Nov-15 | 523592 | JENSONICOL | 6-Nov-15 |
| 532183 | GAYATRI | 6-Nov-15 | 517063 | JETKINGQ | 6-Nov-15 |
| 532622 | GDL | 6-Nov-15 | 531960 | JINDONL | 6-Nov-15 |
| 521133 | GEMSPIN | 6-Nov-15 | 531543 | JINDWORLD | 6-Nov-15 |
| 532285 | GEOJITBNPP | 6-Nov-15 | 506522 | JLMORI | 6-Nov-15 |
| 500620 | GESHIP | 6-Nov-15 | 532508 | JSL | 6-Nov-15 |
| 531744 | GINISILK | 6-Nov-15 | 513250 | JYOTISTRUC | 6-Nov-15 |
| 538595 | GLOSTER | 6-Nov-15 | 539014 | KALPACOMME | 6-Nov-15 |
| 530317 | GODAVARI | 6-Nov-15 | 590036 | KALPAPER | 6-Nov-15 |
| 500164 | GODREJIND | 6-Nov-15 | 513509 | KALYANIFRG | 6-Nov-15 |
| 533189 | GOENKA | 6-Nov-15 | 514322 | KAMADGIRI | 6-Nov-15 |
| 532980 | GOKUL | 6-Nov-15 | 539304 | KARTAVYA | 6-Nov-15 |
| 500151 | GOLDENTOBC | 6-Nov-15 | 530163 | KERALAYUR | 6-Nov-15 |
| 530663 | GOYALASS | 6-Nov-15 | 502937 | KESORAMIND | 6-Nov-15 |
| 501314 | GROMOTRADE | 6-Nov-15 | 532304 | KJMCCORP | 6-Nov-15 |
| 509152 | GRPLTD | 6-Nov-15 | 530235 | KJMCFIN | 6-Nov-15 |
| 511543 | GSBFIN | 6-Nov-15 | 517471 | KOATOLIN | 6-Nov-15 |
| 500676 | GSKCONS | 6-Nov-15 | 514128 | KONARKSY | 6-Nov-15 |
| 532702 | GSPL | 6-Nov-15 | 524280 | KOPRAN | 6-Nov-15 |
| 500170 | GTNINDS | 6-Nov-15 | 539384 | KRISHNACAP | 6-Nov-15 |
| 532786 | GTOFFSHORE | 6-Nov-15 | 530421 | KUWERIN | 6-Nov-15 |
| 532425 | GULCHEM | 6-Nov-15 | 502958 | LAKSHMIMIL | 6-Nov-15 |
| 506480 | GULFOILCOR | 6-Nov-15 | 519570 | LAKSHMIO | 6-Nov-15 |
| 532770 | HANUNG | 6-Nov-15 | 532275 | LANDMARC | 6-Nov-15 |
| 509597 | HARDCAS | 6-Nov-15 | 526596 | LIBERTSHOE | 6-Nov-15 |
| 539125 | HARI | 6-Nov-15 | 512455 | LLOYDSME | 6-Nov-15 |
| 500467 | HARRMALAYA | 6-Nov-15 | 532796 | LUMAXTECH | 6-Nov-15 |
| 533162 | HATHWAY | 6-Nov-15 | 500520 | M&M | 6-Nov-15 |
| 508486 | HAWKINCOOK | 6-Nov-15 | 531540 | MAINFRA | 6-Nov-15 |
| 532859 | HGS | 6-Nov-15 | 506919 | MAKERSL | 6-Nov-15 |
| 532847 | HILTON | 6-Nov-15 | 502157 | MANGLMCEM | 6-Nov-15 |
| 509635 | HINDCOMPOS | 6-Nov-15 | 521018 | MARALOVER | 6-Nov-15 |
| 513599 | HINDCOPPER | 6-Nov-15 | 500271 | MAX | 6-Nov-15 |

| | | | | | |
|--------|------------|----------|--------|------------|----------|
| 539126 | MEP | 6-Nov-15 | 505530 | PRISMINFO | 6-Nov-15 |
| 531357 | MERMETL | 6-Nov-15 | 511557 | PROFINC | 6-Nov-15 |
| 514450 | MHLXMIRU | 6-Nov-15 | 519014 | PRSNTIN | 6-Nov-15 |
| 531456 | MINAXI | 6-Nov-15 | 509220 | PTL | 6-Nov-15 |
| 539303 | MINDAFIN | 6-Nov-15 | 532693 | PUNJLLOYD | 6-Nov-15 |
| 523373 | MINID | 6-Nov-15 | 532891 | PURVA | 6-Nov-15 |
| 526642 | MIRZAIN | 6-Nov-15 | 517556 | PVP | 6-Nov-15 |
| 522036 | MIVENMACH | 6-Nov-15 | 532441 | RAINBOWDQ | 6-Nov-15 |
| 509760 | MODRNSH | 6-Nov-15 | 500358 | RAMAPETRO | 6-Nov-15 |
| 533286 | MOIL | 6-Nov-15 | 500260 | RAMCOCEM | 6-Nov-15 |
| 513446 | MONNETISPA | 6-Nov-15 | 532369 | RAMCOIND | 6-Nov-15 |
| 511549 | MORARKFI | 6-Nov-15 | 532370 | RAMCOSYS | 6-Nov-15 |
| 517334 | MOTHERSUMI | 6-Nov-15 | 515127 | RAMMA | 6-Nov-15 |
| 534312 | MTEDUCARE | 6-Nov-15 | 531522 | RASOYPR | 6-Nov-15 |
| 532777 | NAUKRI | 6-Nov-15 | 507966 | RASRESOR | 6-Nov-15 |
| 514332 | NEOINFRA | 6-Nov-15 | 537840 | RAUNAQEPC | 6-Nov-15 |
| 511658 | NETTLINX | 6-Nov-15 | 532712 | RCOM | 6-Nov-15 |
| 531959 | NEWINFRA | 6-Nov-15 | 523650 | REDEXPR | 6-Nov-15 |
| 539311 | NFIL | 6-Nov-15 | 505509 | RESPONIND | 6-Nov-15 |
| 535458 | NIBL | 6-Nov-15 | 520008 | RICOAUTO | 6-Nov-15 |
| 504058 | NIPPOBTRY | 6-Nov-15 | 504365 | RIDHISYN | 6-Nov-15 |
| 500307 | NIRLON | 6-Nov-15 | 517035 | RIR | 6-Nov-15 |
| 532722 | NITCO | 6-Nov-15 | 526492 | RISHIROOP | 6-Nov-15 |
| 533202 | NITESHEST | 6-Nov-15 | 509845 | RJSHAH | 6-Nov-15 |
| 530435 | NOESISIND | 6-Nov-15 | 502448 | ROLLT | 6-Nov-15 |
| 503780 | NRC | 6-Nov-15 | 531324 | ROSELABS | 6-Nov-15 |
| 530175 | ODYSSEY | 6-Nov-15 | 512047 | ROYALIND | 6-Nov-15 |
| 500312 | ONGC | 6-Nov-15 | 512565 | RTEXPO | 6-Nov-15 |
| 513121 | ORICON | 6-Nov-15 | 504335 | RUTRINT | 6-Nov-15 |
| 534076 | ORIENTREF | 6-Nov-15 | 507663 | SAGRSOY-B | 6-Nov-15 |
| 507260 | OU DHSUG | 6-Nov-15 | 500113 | SAIL | 6-Nov-15 |
| 539291 | OZONWORLD | 6-Nov-15 | 526725 | SANDESH | 6-Nov-15 |
| 531395 | PADAMCO | 6-Nov-15 | 530073 | SANGHVIMOV | 6-Nov-15 |
| 531349 | PANACEABIO | 6-Nov-15 | 539143 | SBCL | 6-Nov-15 |
| 513511 | PANCHMAHQ | 6-Nov-15 | 532102 | SBECSUG | 6-Nov-15 |
| 511525 | PANINDIAC | 6-Nov-15 | 500112 | SBIN | 6-Nov-15 |
| 531816 | PANORAMUNI | 6-Nov-15 | 538520 | SBL | 6-Nov-15 |
| 509820 | PAPERPROD | 6-Nov-15 | 524540 | SECHE | 6-Nov-15 |
| 524031 | PATIDAR | 6-Nov-15 | 533180 | SGJHL | 6-Nov-15 |
| 534809 | PCJEWELLER | 6-Nov-15 | 531431 | SHAKTIPUMP | 6-Nov-15 |
| 504132 | PERMAGN | 6-Nov-15 | 535602 | SHARDA | 6-Nov-15 |
| 532355 | PICTUREHS | 6-Nov-15 | 524548 | SHARMEH | 6-Nov-15 |
| 523648 | PLASTIBLEN | 6-Nov-15 | 523449 | SHARP | 6-Nov-15 |
| 532461 | PNB | 6-Nov-15 | 512289 | SHIRPUR-G | 6-Nov-15 |
| 524210 | PNTKYOR | 6-Nov-15 | 532083 | SHKALYN | 6-Nov-15 |
| 539195 | POEL | 6-Nov-15 | 539334 | SHREEPUSHK | 6-Nov-15 |
| 514486 | POLTC | 6-Nov-15 | 503205 | SHREERAM | 6-Nov-15 |
| 532460 | PONNIERODE | 6-Nov-15 | 532310 | SHREERAMA | 6-Nov-15 |
| 531855 | PRABHAVIN | 6-Nov-15 | 531962 | SHREMETAL | 6-Nov-15 |

| | | | | | |
|--------|-------------|----------|--------|------------|----------|
| 532007 | SHVFL | 6-Nov-15 | 502893 | UNITEDINT | 6-Nov-15 |
| 505529 | SHYAMHO | 6-Nov-15 | 530505 | UPERGANGES | 6-Nov-15 |
| 533018 | SIMPLXMIL | 6-Nov-15 | 500254 | UTTAMVALUE | 6-Nov-15 |
| 533019 | SIMPLXPAP | 6-Nov-15 | 503657 | VEERENRGY | 6-Nov-15 |
| 505650 | SKYLMILAR | 6-Nov-15 | 511523 | VEERHEALTH | 6-Nov-15 |
| 522042 | SMENER | 6-Nov-15 | 526755 | VELHO | 6-Nov-15 |
| 505192 | SMLISUZU | 6-Nov-15 | 523261 | VENKYS | 6-Nov-15 |
| 513699 | SOLIDSTON | 6-Nov-15 | 531950 | VERTEX | 6-Nov-15 |
| 523826 | SOVERDIA | 6-Nov-15 | 532401 | VIJAYABANK | 6-Nov-15 |
| 517214 | SPICEMOBI | 6-Nov-15 | 519373 | VIMALOIL | 6-Nov-15 |
| 519238 | SPTRSHI | 6-Nov-15 | 524394 | VIMTALABS | 6-Nov-15 |
| 503806 | SRF | 6-Nov-15 | 517015 | VINDHYATEL | 6-Nov-15 |
| 536799 | SRSFIN | 6-Nov-15 | 530627 | VIPULDYE | 6-Nov-15 |
| 533305 | SRSREAL | 6-Nov-15 | 534741 | VIRTUALG | 6-Nov-15 |
| 500399 | STEELCO | 6-Nov-15 | 532721 | VISASTEEL | 6-Nov-15 |
| 533316 | STEL | 6-Nov-15 | 511333 | VLSFINANCE | 6-Nov-15 |
| 512299 | STERLINBIO | 6-Nov-15 | 539222 | VMV | 6-Nov-15 |
| 504959 | STOVACQ | 6-Nov-15 | 500575 | VOLTAS | 6-Nov-15 |
| 514211 | SUMREETINDS | 6-Nov-15 | 509966 | VSTIND | 6-Nov-15 |
| 537253 | SUNLOC | 6-Nov-15 | 531933 | WASHISOF | 6-Nov-15 |
| 533101 | SURYAAMBA | 6-Nov-15 | 538382 | WESTLEIRES | 6-Nov-15 |
| 500336 | SURYAROSNI | 6-Nov-15 | 505533 | WESTLIFE | 6-Nov-15 |
| 531920 | SURYODAL | 6-Nov-15 | 501391 | WHBRADY | 6-Nov-15 |
| 524488 | SVCSUPE | 6-Nov-15 | 514348 | WINSOME | 6-Nov-15 |
| 506863 | SWADEIN | 6-Nov-15 | 505583 | WWTECHHOL | 6-Nov-15 |
| 503816 | SWADPOL | 6-Nov-15 | 532616 | XCHANGING | 6-Nov-15 |
| 531909 | SWAGRUHA | 6-Nov-15 | 501270 | ZCHANAIN | 6-Nov-15 |
| 532051 | SWELECTES | 6-Nov-15 | 532039 | ZENOTECH | 6-Nov-15 |
| 519483 | TAIIND | 6-Nov-15 | 513039 | ZHINUDYP | 6-Nov-15 |
| 521038 | TAMJAIM | 6-Nov-15 | 503622 | ZSVTRADI | 6-Nov-15 |
| 500770 | TATACHEM | 6-Nov-15 | 501386 | ZSWASTSA | 6-Nov-15 |
| 501301 | TATAINVEST | 6-Nov-15 | 533022 | 20MICRONS | 7-Nov-15 |
| 500570 | TATAMOTORS | 6-Nov-15 | 530499 | AKCAPIT | 7-Nov-15 |
| 570001 | TATAMTRDVR | 6-Nov-15 | 532327 | ALLSOFT | 7-Nov-15 |
| 533553 | TDPOWERSYS | 6-Nov-15 | 535916 | ALSL | 7-Nov-15 |
| 526650 | TFCILTD | 6-Nov-15 | 531978 | AMBIKCO | 7-Nov-15 |
| 532845 | TGBHOTELS | 6-Nov-15 | 530133 | AMCOIND | 7-Nov-15 |
| 532804 | TIIL | 6-Nov-15 | 539265 | AMRAFIN | 7-Nov-15 |
| 524582 | TIRUSTA | 6-Nov-15 | 532418 | ANDHRABANK | 7-Nov-15 |
| 531644 | TOKYOFIN | 6-Nov-15 | 530721 | ANGIND | 7-Nov-15 |
| 500418 | TOKYOPLAST | 6-Nov-15 | 534707 | ANSHUS | 7-Nov-15 |
| 512101 | TRIPR | 6-Nov-15 | 506260 | ANUHPHR | 7-Nov-15 |
| 533655 | TRITURBINE | 6-Nov-15 | 506979 | APTPACK | 7-Nov-15 |
| 506808 | TUTIALKA | 6-Nov-15 | 532914 | ARCOTECH | 7-Nov-15 |
| 532515 | TVTODAY | 6-Nov-15 | 516064 | ARCPR | 7-Nov-15 |
| 507458 | UBHOLDINGS | 6-Nov-15 | 526851 | AREXMIS | 7-Nov-15 |
| 530363 | UGARSUGAR | 6-Nov-15 | 511605 | ARIHCAPM | 7-Nov-15 |
| 539314 | UNIAUTO | 6-Nov-15 | 532397 | ARMSPAPER | 7-Nov-15 |
| 532477 | UNIONBANK | 6-Nov-15 | 533163 | ARSSINFRA | 7-Nov-15 |

| | | | | | |
|--------|------------|----------|--------|------------|----------|
| 500016 | ARUNAHTEL | 7-Nov-15 | 521014 | EUROTEXIND | 7-Nov-15 |
| 514482 | ASAHIIND | 7-Nov-15 | 526614 | EXPOGAS | 7-Nov-15 |
| 539017 | ASHFL | 7-Nov-15 | 532656 | FACORALL | 7-Nov-15 |
| 532797 | AUTOIND | 7-Nov-15 | 509527 | FALCONTQ | 7-Nov-15 |
| 512573 | AVANTI | 7-Nov-15 | 533400 | FCEL | 7-Nov-15 |
| 509053 | BANASFN | 7-Nov-15 | 531599 | FDC | 7-Nov-15 |
| 532230 | BENGALT | 7-Nov-15 | 500141 | FERROALL | 7-Nov-15 |
| 530803 | BHAGERIA | 7-Nov-15 | 531191 | FILTRON | 7-Nov-15 |
| 512296 | BHAGYNAGAR | 7-Nov-15 | 533296 | FMNL | 7-Nov-15 |
| 533321 | BILENERGY | 7-Nov-15 | 507552 | FOODSIN | 7-Nov-15 |
| 531590 | BILPOWER | 7-Nov-15 | 526367 | GANESHHOUC | 7-Nov-15 |
| 526709 | BITS | 7-Nov-15 | 504028 | GEE | 7-Nov-15 |
| 531647 | BJDUP | 7-Nov-15 | 531137 | GEMSI | 7-Nov-15 |
| 532290 | BLBLIMITED | 7-Nov-15 | 507815 | GILLETTE | 7-Nov-15 |
| 500069 | BNKCAP | 7-Nov-15 | 532715 | GITANJALI | 7-Nov-15 |
| 530809 | BNRUDY | 7-Nov-15 | 533212 | GKB | 7-Nov-15 |
| 535693 | BRAHMINFRA | 7-Nov-15 | 500174 | GLFL | 7-Nov-15 |
| 500825 | BRITANNIA | 7-Nov-15 | 506186 | GLXYENT | 7-Nov-15 |
| 538546 | BRPL | 7-Nov-15 | 532181 | GMDCLTD | 7-Nov-15 |
| 532916 | BVCL | 7-Nov-15 | 526729 | GOLDIAM | 7-Nov-15 |
| 500078 | CAMPHOR | 7-Nov-15 | 523676 | GOLKUNDIA | 7-Nov-15 |
| 531358 | CHOICEIN | 7-Nov-15 | 509148 | GOVINDRU | 7-Nov-15 |
| 523608 | CHOKGLB | 7-Nov-15 | 532734 | GPIL | 7-Nov-15 |
| 523246 | CHOKINT | 7-Nov-15 | 526751 | GRATEXI | 7-Nov-15 |
| 519475 | CHORDIA | 7-Nov-15 | 533282 | GRAVITA | 7-Nov-15 |
| 511696 | CHRTEDCA | 7-Nov-15 | 532744 | GTNTEX | 7-Nov-15 |
| 532807 | CINELINE | 7-Nov-15 | 500173 | GUJFLUORO | 7-Nov-15 |
| 512213 | CLASELE | 7-Nov-15 | 531341 | GUJINV | 7-Nov-15 |
| 534691 | COMCL | 7-Nov-15 | 513337 | GUJTLM | 7-Nov-15 |
| 535267 | COMFINCAP | 7-Nov-15 | 539176 | HAWAENG | 7-Nov-15 |
| 531216 | COMFINTE | 7-Nov-15 | 532873 | HDIL | 7-Nov-15 |
| 532342 | COMMEXTECH | 7-Nov-15 | 509631 | HEG | 7-Nov-15 |
| 504340 | CONFINT | 7-Nov-15 | 504176 | HIGHENE | 7-Nov-15 |
| 532179 | CORPBANK | 7-Nov-15 | 531301 | HIGHSTREE | 7-Nov-15 |
| 526269 | CRSTCHM | 7-Nov-15 | 531918 | HINDAPL | 7-Nov-15 |
| 532913 | CSIL | 7-Nov-15 | 515145 | HINDNATGLS | 7-Nov-15 |
| 533160 | DBREALTY | 7-Nov-15 | 503881 | HINDSYNTEX | 7-Nov-15 |
| 532121 | DENABANK | 7-Nov-15 | 502873 | HPCOTTON | 7-Nov-15 |
| 500119 | DHAMPURSUG | 7-Nov-15 | 534733 | ICVLSTEELS | 7-Nov-15 |
| 530801 | DIAMOND | 7-Nov-15 | 532133 | IFGLREFRAC | 7-Nov-15 |
| 523810 | DIVINE | 7-Nov-15 | 532514 | IGL | 7-Nov-15 |
| 509130 | DUNLOP-B1 | 7-Nov-15 | 501295 | IITL | 7-Nov-15 |
| 524818 | DYNAMIND | 7-Nov-15 | 532414 | IKFTECH | 7-Nov-15 |
| 532707 | DYNPRO | 7-Nov-15 | 532907 | IL&FSENGG | 7-Nov-15 |
| 507917 | EASTBUILD | 7-Nov-15 | 511473 | INDBANK | 7-Nov-15 |
| 533161 | EMMBI | 7-Nov-15 | 523465 | INDBNK | 7-Nov-15 |
| 514118 | ESKAY | 7-Nov-15 | 531061 | INDECOM | 7-Nov-15 |
| 532823 | EUROCERA | 7-Nov-15 | 517571 | INDLMETER | 7-Nov-15 |
| 533109 | EUROMULTI | 7-Nov-15 | 524648 | INDOAMIN | 7-Nov-15 |

| | | | | | |
|--------|-------------|----------|--------|------------|----------|
| 533676 | INDOTHAI | 7-Nov-15 | 538401 | METSL | 7-Nov-15 |
| 524652 | INDSWFTLTD | 7-Nov-15 | 522241 | MMFL | 7-Nov-15 |
| 533329 | INDTERRAIN | 7-Nov-15 | 539046 | MNKCMILTD | 7-Nov-15 |
| 533315 | INOVSYNTH | 7-Nov-15 | 519287 | MODAIRY | 7-Nov-15 |
| 532851 | INSECTICID | 7-Nov-15 | 532140 | MOHITE | 7-Nov-15 |
| 534732 | INTELLADV | 7-Nov-15 | 532078 | MONNETIN | 7-Nov-15 |
| 533506 | INVENTURE | 7-Nov-15 | 532723 | MONNETPRO | 7-Nov-15 |
| 539119 | JAINMARMO | 7-Nov-15 | 505343 | MONOT | 7-Nov-15 |
| 538564 | JAMESWARREN | 7-Nov-15 | 524709 | NAGAAGRI | 7-Nov-15 |
| 512329 | JARITEX | 7-Nov-15 | 526616 | NATPLAS | 7-Nov-15 |
| 514318 | JATTAINDUS | 7-Nov-15 | 530377 | NILA | 7-Nov-15 |
| 512233 | JAYTEX | 7-Nov-15 | 519494 | NKIND | 7-Nov-15 |
| 513252 | JAYUSH | 7-Nov-15 | 507813 | NOL | 7-Nov-15 |
| 500223 | JCTLTD | 7-Nov-15 | 519528 | NORBTEAEXP | 7-Nov-15 |
| 532624 | JINDALPHOT | 7-Nov-15 | 532623 | NRINTER | 7-Nov-15 |
| 500227 | JINDALPOLY | 7-Nov-15 | 531304 | NUTECGLOB | 7-Nov-15 |
| 536773 | JPOLYINVST | 7-Nov-15 | 533015 | NUTEK | 7-Nov-15 |
| 539216 | JUNCTION | 7-Nov-15 | 531996 | ODYCORP | 7-Nov-15 |
| 534623 | JUPITERIN | 7-Nov-15 | 533008 | OISL | 7-Nov-15 |
| 524109 | KABRAEXTRU | 7-Nov-15 | 531157 | ORGCOT | 7-Nov-15 |
| 530201 | KALLAM | 7-Nov-15 | 523483 | PACIFICI | 7-Nov-15 |
| 526668 | KAMATHOTEL | 7-Nov-15 | 517230 | PAEL | 7-Nov-15 |
| 524444 | KAVITIND | 7-Nov-15 | 517417 | PATELSAI | 7-Nov-15 |
| 524174 | KESARPE | 7-Nov-15 | 514326 | PATSPINLTD | 7-Nov-15 |
| 507474 | KFBL | 7-Nov-15 | 524136 | PCCOSMA | 7-Nov-15 |
| 531892 | KHANDSE | 7-Nov-15 | 532748 | PFOCUS | 7-Nov-15 |
| 532741 | KIL | 7-Nov-15 | 517296 | PHOENIXLL | 7-Nov-15 |
| 531413 | KIRANPR | 7-Nov-15 | 532366 | PNBGILTS | 7-Nov-15 |
| 532967 | KIRIINDUS | 7-Nov-15 | 526043 | POLYCHMP | 7-Nov-15 |
| 514221 | KLIFESTYL | 7-Nov-15 | 532011 | POOJAENT | 7-Nov-15 |
| 502150 | KLYNCEM | 7-Nov-15 | 513532 | PRADPME | 7-Nov-15 |
| 523323 | KOVAI | 7-Nov-15 | 532718 | PRATIBHA | 7-Nov-15 |
| 504392 | KRISHNA | 7-Nov-15 | 526490 | PRATIK | 7-Nov-15 |
| 532997 | KSK | 7-Nov-15 | 514354 | PREMIERPOL | 7-Nov-15 |
| 530149 | KSLIND | 7-Nov-15 | 530695 | PRIMEPRO | 7-Nov-15 |
| 509048 | LANCORHOL | 7-Nov-15 | 512217 | PRISMMEDI | 7-Nov-15 |
| 533343 | LOVABLE | 7-Nov-15 | 531688 | PRITHVISOF | 7-Nov-15 |
| 517206 | LUMAXIND | 7-Nov-15 | 533295 | PSB | 7-Nov-15 |
| 500259 | LYKALABS | 7-Nov-15 | 539006 | PTCIL | 7-Nov-15 |
| 515093 | MADHAV | 7-Nov-15 | 512099 | PUNITCO | 7-Nov-15 |
| 519612 | MAHAANF | 7-Nov-15 | 538647 | PURSHOTTAM | 7-Nov-15 |
| 532728 | MALUPAPER | 7-Nov-15 | 531437 | PWASML | 7-Nov-15 |
| 532932 | MANAKSIA | 7-Nov-15 | 511116 | QUADRANT | 7-Nov-15 |
| 539044 | MANAKSTELTD | 7-Nov-15 | 538452 | QUASAR | 7-Nov-15 |
| 513303 | MDRNSTL | 7-Nov-15 | 590070 | RADAAN | 7-Nov-15 |
| 532408 | MEGASOFT | 7-Nov-15 | 532503 | RAJPALAYAM | 7-Nov-15 |
| 526235 | MERCATOR | 7-Nov-15 | 500360 | RAPICUT | 7-Nov-15 |
| 512415 | MERCTRD | 7-Nov-15 | 538707 | RCCL | 7-Nov-15 |
| 531810 | METALCO | 7-Nov-15 | 505817 | REILELEC | 7-Nov-15 |

| | | | | | |
|--------|-------------|----------|--------|-------------|----------|
| 530251 | RISAINTL | 7-Nov-15 | 521180 | SUPERSPIN | 7-Nov-15 |
| 526861 | RISHILASE | 7-Nov-15 | 513597 | SURANAIND | 7-Nov-15 |
| 523021 | RISHITECH | 7-Nov-15 | 533298 | SURANASOL | 7-Nov-15 |
| 513369 | RJKMRFR | 7-Nov-15 | 517530 | SURANAT&P | 7-Nov-15 |
| 532527 | RKFORGE | 7-Nov-15 | 514138 | SURYALA | 7-Nov-15 |
| 531447 | ROCKONFIN | 7-Nov-15 | 521200 | SURYALAXMI | 7-Nov-15 |
| 531822 | RODIUM | 7-Nov-15 | 526365 | SWARN SAR | 7-Nov-15 |
| 526193 | ROYALCU | 7-Nov-15 | 524470 | SYNCOMF | 7-Nov-15 |
| 503169 | RUBYMILLS | 7-Nov-15 | 531190 | TAVERNIER | 7-Nov-15 |
| 533470 | RUSHIL | 7-Nov-15 | 533281 | TECHNO | 7-Nov-15 |
| 526477 | SAENTER | 7-Nov-15 | 505400 | TEXINFRA | 7-Nov-15 |
| 532841 | SAHYADRI | 7-Nov-15 | 533164 | TEXMOPIPES | 7-Nov-15 |
| 507315 | SAKHTISUG | 7-Nov-15 | 533326 | TEXRAIL | 7-Nov-15 |
| 511630 | SAMBHA AV | 7-Nov-15 | 503663 | TILAKFIN | 7-Nov-15 |
| 521222 | SANBLUE | 7-Nov-15 | 513540 | TNSTLTU | 7-Nov-15 |
| 504614 | SARDAEN | 7-Nov-15 | 530783 | TRANSASIA | 7-Nov-15 |
| 530993 | SARTHAKGL | 7-Nov-15 | 532356 | TRIVENI | 7-Nov-15 |
| 531893 | SAWABUSI | 7-Nov-15 | 509243 | TVSSRICHAK | 7-Nov-15 |
| 521131 | SBFL | 7-Nov-15 | 532505 | UCOBANK | 7-Nov-15 |
| 530075 | SELAN | 7-Nov-15 | 538610 | UNISON | 7-Nov-15 |
| 534598 | SEPOWER | 7-Nov-15 | 507878 | UNITECH | 7-Nov-15 |
| 502450 | SESHAPAPER | 7-Nov-15 | 533171 | UNITEDBNK | 7-Nov-15 |
| 532993 | SEZAL | 7-Nov-15 | 526113 | UNRYLMA | 7-Nov-15 |
| 509874 | SHALPAINTS | 7-Nov-15 | 532765 | USHERAGRO | 7-Nov-15 |
| 531925 | SHAQUAK | 7-Nov-15 | 532320 | VAARAD | 7-Nov-15 |
| 531667 | SHGOVTR | 7-Nov-15 | 511431 | VAKRANGEE | 7-Nov-15 |
| 507952 | SHIKHARLETR | 7-Nov-15 | 530459 | VALSONQ | 7-Nov-15 |
| 530549 | SHILPAMED | 7-Nov-15 | 538918 | VANICOM | 7-Nov-15 |
| 533389 | SHILPI | 7-Nov-15 | 533156 | VASCONEQ | 7-Nov-15 |
| 516016 | SHREYANIND | 7-Nov-15 | 522015 | VCCLLTD | 7-Nov-15 |
| 526335 | SHREYASI | 7-Nov-15 | 520113 | VESUVIUS | 7-Nov-15 |
| 520086 | SICAL | 7-Nov-15 | 538598 | VISHAL | 7-Nov-15 |
| 530439 | SIDDHA | 7-Nov-15 | 533269 | WABAG | 7-Nov-15 |
| 513472 | SIMPLEXCAS | 7-Nov-15 | 532016 | WELLESLEY | 7-Nov-15 |
| 537954 | SKP | 7-Nov-15 | 526586 | WIMPLAST | 7-Nov-15 |
| 513418 | SMFIL | 7-Nov-15 | 522029 | WINDMACHIN | 7-Nov-15 |
| 512048 | SMIL | 7-Nov-15 | 531663 | YUVRAAJHPL | 7-Nov-15 |
| 532815 | SMSPHARMA | 7-Nov-15 | 508900 | ZENCAP | 7-Nov-15 |
| 524667 | SOTL | 7-Nov-15 | 514266 | ZENIFIB | 7-Nov-15 |
| 532025 | SOWBHAGYA | 7-Nov-15 | 522163 | DIAPOW ER | 8-Nov-15 |
| 538920 | SPACEAGE | 7-Nov-15 | 512579 | GUJNRECOKE | 8-Nov-15 |
| 534425 | SPECIALITY | 7-Nov-15 | 570003 | GUJNREDVR | 8-Nov-15 |
| 521082 | SPENTEX | 7-Nov-15 | 523248 | MACPLASQ | 8-Nov-15 |
| 500402 | SPMLINFRA | 7-Nov-15 | 539043 | MANAKINDLTD | 8-Nov-15 |
| 523756 | SREINFRA | 7-Nov-15 | 539045 | MNKALCOLTD | 8-Nov-15 |
| 513575 | STERPOW | 7-Nov-15 | 530419 | SUMEDHA | 8-Nov-15 |
| 500404 | SUNFLAG | 7-Nov-15 | 533540 | TREEHOUSE | 8-Nov-15 |
| 524715 | SUNPHARMA | 7-Nov-15 | 533292 | A2ZINFRA | 9-Nov-15 |

| | | | | | |
|--------|------------|----------|--------|------------|----------|
| 539096 | AANANDALAK | 9-Nov-15 | 526731 | BRIGHTBR | 9-Nov-15 |
| 519319 | AASHEE | 9-Nov-15 | 532123 | BSELINFRA | 9-Nov-15 |
| 500303 | ABIRLANUVO | 9-Nov-15 | 517421 | BUTTERFLY | 9-Nov-15 |
| 536737 | ACFSL | 9-Nov-15 | 532885 | CENTRALBK | 9-Nov-15 |
| 590088 | ADINATHBI | 9-Nov-15 | 531327 | CHARMS | 9-Nov-15 |
| 532811 | AHLUCONT | 9-Nov-15 | 539230 | CHEMIESYNT | 9-Nov-15 |
| 539177 | AIIL | 9-Nov-15 | 531235 | CITIPOR | 9-Nov-15 |
| 532309 | AIL | 9-Nov-15 | 538504 | CML | 9-Nov-15 |
| 534064 | AIML | 9-Nov-15 | 532104 | CMSINFO | 9-Nov-15 |
| 511692 | AJCON | 9-Nov-15 | 533278 | COALINDIA | 9-Nov-15 |
| 530621 | AKARTOOL | 9-Nov-15 | 539436 | COFFEEDAY | 9-Nov-15 |
| 532480 | ALBK | 9-Nov-15 | 530545 | COSCO | 9-Nov-15 |
| 526707 | ALCHEM | 9-Nov-15 | 536974 | CPL | 9-Nov-15 |
| 505216 | ALFREDHE | 9-Nov-15 | 532392 | CREATIVEYE | 9-Nov-15 |
| 521070 | ALOKTEXT | 9-Nov-15 | 531380 | CSURGSU | 9-Nov-15 |
| 532878 | ALPA | 9-Nov-15 | 532783 | DAAWAT | 9-Nov-15 |
| 530715 | ALPSINDUS | 9-Nov-15 | 530171 | DAULAT | 9-Nov-15 |
| 534612 | AMTL | 9-Nov-15 | 502820 | DCM | 9-Nov-15 |
| 501630 | ANANDPROJ | 9-Nov-15 | 533336 | DHUNINV | 9-Nov-15 |
| 500013 | ANSALAPI | 9-Nov-15 | 538902 | DHUNTEAIND | 9-Nov-15 |
| 523007 | ANSALBU | 9-Nov-15 | 533176 | DQE | 9-Nov-15 |
| 507828 | ANSALHSG | 9-Nov-15 | 505693 | DRLCOME | 9-Nov-15 |
| 533758 | APLAPOLLO | 9-Nov-15 | 532365 | DSSL | 9-Nov-15 |
| 532114 | AREALTY | 9-Nov-15 | 532610 | DWARKESH | 9-Nov-15 |
| 524412 | AREYDRG | 9-Nov-15 | 517238 | DYNAVSN | 9-Nov-15 |
| 523716 | ASHIANA | 9-Nov-15 | 526703 | ECOPLAST | 9-Nov-15 |
| 519532 | ASANTNE | 9-Nov-15 | 532696 | EDUCOMP | 9-Nov-15 |
| 530723 | ASITCFIN | 9-Nov-15 | 533261 | EROSMEDIA | 9-Nov-15 |
| 500024 | ASSAMCO | 9-Nov-15 | 511716 | ESCORTSFIN | 9-Nov-15 |
| 512265 | AVONMERC | 9-Nov-15 | 533264 | ESL | 9-Nov-15 |
| 511589 | AVONMORE | 9-Nov-15 | 521137 | EUREKAI | 9-Nov-15 |
| 505506 | AXONFIN | 9-Nov-15 | 526735 | EXCAST | 9-Nov-15 |
| 531268 | B2BSOFT | 9-Nov-15 | 533090 | EXCEL | 9-Nov-15 |
| 532382 | BALAJITELE | 9-Nov-15 | 532666 | FCSOFT | 9-Nov-15 |
| 502355 | BALKRISIND | 9-Nov-15 | 500139 | FEDDERLOYD | 9-Nov-15 |
| 524824 | BALPHARMA | 9-Nov-15 | 526227 | FILATEX | 9-Nov-15 |
| 532149 | BANKINDIA | 9-Nov-15 | 511369 | FIRFIN | 9-Nov-15 |
| 512477 | BETXIND | 9-Nov-15 | 536751 | FIVEX | 9-Nov-15 |
| 590021 | BHARATRAS | 9-Nov-15 | 508980 | FRONTCAP | 9-Nov-15 |
| 526853 | BI | 9-Nov-15 | 535917 | GCMCOMM | 9-Nov-15 |
| 524723 | BIJHANS | 9-Nov-15 | 535431 | GCMSECU | 9-Nov-15 |
| 526666 | BIL | 9-Nov-15 | 506109 | GENESYS | 9-Nov-15 |
| 539290 | BINDALAGRO | 9-Nov-15 | 530343 | GENUSPOWER | 9-Nov-15 |
| 539274 | BLFL | 9-Nov-15 | 533048 | GISOLUTION | 9-Nov-15 |
| 506197 | BLISSGVS | 9-Nov-15 | 530263 | GLOBALCA | 9-Nov-15 |
| 509470 | BOMOXY-B1 | 9-Nov-15 | 533104 | GLOBUSSPR | 9-Nov-15 |
| 502219 | BOROSIL | 9-Nov-15 | 500166 | GOODRICKE | 9-Nov-15 |
| 500547 | BPCL | 9-Nov-15 | 533761 | GPTINFRA | 9-Nov-15 |
| 500074 | BPL | 9-Nov-15 | 509488 | GRAPHITE | 9-Nov-15 |

| | | | | | |
|--------|------------|----------|--------|------------|----------|
| 531737 | GREENCREST | 9-Nov-15 | 530065 | LORDSHOTL | 9-Nov-15 |
| 508918 | GREYCELLS | 9-Nov-15 | 530689 | LYKISLTD | 9-Nov-15 |
| 531449 | GRMOVER | 9-Nov-15 | 534532 | LYPSAGEMS | 9-Nov-15 |
| 509079 | GUFICBIO | 9-Nov-15 | 530347 | MAGNUML | 9-Nov-15 |
| 532160 | GUJSTATFIN | 9-Nov-15 | 513269 | MANINDS | 9-Nov-15 |
| 539206 | GVBL | 9-Nov-15 | 531394 | MARVINY | 9-Nov-15 |
| 517354 | HAVELLS | 9-Nov-15 | 532613 | MAXWELL | 9-Nov-15 |
| 500184 | HCIL | 9-Nov-15 | 526570 | MIDWEST | 9-Nov-15 |
| 539174 | HELPAGE | 9-Nov-15 | 505336 | MIRCH | 9-Nov-15 |
| 505720 | HERCULES | 9-Nov-15 | 512267 | MMWL | 9-Nov-15 |
| 505725 | HINDEVER | 9-Nov-15 | 500890 | MODIRUBBER | 9-Nov-15 |
| 500104 | HINDPETRO | 9-Nov-15 | 517140 | MOSERBAER | 9-Nov-15 |
| 526217 | HITECHPLAS | 9-Nov-15 | 539219 | MUL | 9-Nov-15 |
| 519126 | HNDFDS | 9-Nov-15 | 532991 | MVL | 9-Nov-15 |
| 532145 | HOTLSILV | 9-Nov-15 | 538926 | NAPL | 9-Nov-15 |
| 519463 | IBINFO | 9-Nov-15 | 534309 | NBCC | 9-Nov-15 |
| 504731 | IBRIGST | 9-Nov-15 | 513023 | NBVENTURES | 9-Nov-15 |
| 500850 | INDHOTEL | 9-Nov-15 | 511535 | NDASEC | 9-Nov-15 |
| 532745 | INDICAP | 9-Nov-15 | 511551 | NETWORTH | 9-Nov-15 |
| 523752 | IOSYSTEM | 9-Nov-15 | 533098 | NHPC | 9-Nov-15 |
| 531109 | ISHANCH | 9-Nov-15 | 533106 | OIL | 9-Nov-15 |
| 513361 | ISWL | 9-Nov-15 | 511674 | OLYCAP | 9-Nov-15 |
| 523610 | ITI | 9-Nov-15 | 511632 | OLYMTFI | 9-Nov-15 |
| 522183 | ITL | 9-Nov-15 | 507609 | OLYOI | 9-Nov-15 |
| 538422 | JACKSON | 9-Nov-15 | 533632 | ONELIFECAP | 9-Nov-15 |
| 526523 | JAYENGY | 9-Nov-15 | 524372 | ORCHIDCHEM | 9-Nov-15 |
| 506910 | JAYSYN | 9-Nov-15 | 506579 | ORIENTCQ | 9-Nov-15 |
| 500219 | JISLJALEQS | 9-Nov-15 | 526325 | ORIENTLTD | 9-Nov-15 |
| 523062 | JJFINCOR | 9-Nov-15 | 509782 | OSEASPR | 9-Nov-15 |
| 505750 | JOSTS | 9-Nov-15 | 500317 | OSWALAGRO | 9-Nov-15 |
| 533451 | KARMAENG | 9-Nov-15 | 506852 | PACL | 9-Nov-15 |
| 530357 | KBSINDIA | 9-Nov-15 | 532827 | PAGEIND | 9-Nov-15 |
| 506530 | KEMP | 9-Nov-15 | 511306 | PALCRED | 9-Nov-15 |
| 505890 | KENNAMET | 9-Nov-15 | 524628 | PARKERAC | 9-Nov-15 |
| 504269 | KHAITANELE | 9-Nov-15 | 506128 | PARNAXLAB | 9-Nov-15 |
| 535730 | KHOBSURAT | 9-Nov-15 | 532780 | PARSVNATH | 9-Nov-15 |
| 523218 | KILBURN | 9-Nov-15 | 500456 | PASUPTAC | 9-Nov-15 |
| 524699 | KILBURNC | 9-Nov-15 | 526381 | PATINTLOG | 9-Nov-15 |
| 512559 | KOHINOOR | 9-Nov-15 | 539267 | PCPROD | 9-Nov-15 |
| 524518 | KREBSBIO | 9-Nov-15 | 513228 | PENIND | 9-Nov-15 |
| 503626 | KSHITIJ | 9-Nov-15 | 539333 | PENPEBS | 9-Nov-15 |
| 531206 | KWALITYCL | 9-Nov-15 | 526435 | PERFEPA | 9-Nov-15 |
| 523457 | LINDEINDIA | 9-Nov-15 | 500680 | PFIZER | 9-Nov-15 |
| 526604 | LIPPISYS | 9-Nov-15 | 533344 | PFS | 9-Nov-15 |
| 532778 | LITL | 9-Nov-15 | 533581 | PGEL | 9-Nov-15 |
| 531527 | LLORF | 9-Nov-15 | 532808 | PGIL | 9-Nov-15 |
| 517518 | LLOYDELENG | 9-Nov-15 | 526481 | PHOENXINTL | 9-Nov-15 |
| 526568 | LONTE | 9-Nov-15 | 539113 | PML | 9-Nov-15 |
| 500284 | LORDSCHLO | 9-Nov-15 | 532387 | PNC | 9-Nov-15 |

| | | | | | |
|--------|------------|----------|--------|------------|----------|
| 523628 | PODDARDEV | 9-Nov-15 | 532316 | SKUMAR | 9-Nov-15 |
| 531397 | POLYCON | 9-Nov-15 | 500394 | SOLCT | 9-Nov-15 |
| 512481 | POLYTEX | 9-Nov-15 | 521036 | SOURCEIND | 9-Nov-15 |
| 533605 | PRAKASHCON | 9-Nov-15 | 531370 | SPARCSYS | 9-Nov-15 |
| 533239 | PRAKASHSTL | 9-Nov-15 | 531982 | SPECFOOD | 9-Nov-15 |
| 526247 | PREMEXPLQ | 9-Nov-15 | 526827 | SPICEISL | 9-Nov-15 |
| 530589 | PRIMAPLA | 9-Nov-15 | 506180 | SRIOMTR | 9-Nov-15 |
| 535514 | PRIMECAPM | 9-Nov-15 | 539255 | STARDELTA | 9-Nov-15 |
| 526801 | PSL | 9-Nov-15 | 517172 | STARVOX | 9-Nov-15 |
| 538993 | PUROHITCON | 9-Nov-15 | 512531 | STCINDIA | 9-Nov-15 |
| 524502 | RAAJMEDI | 9-Nov-15 | 526071 | STELLANT | 9-Nov-15 |
| 532497 | RADICO | 9-Nov-15 | 531509 | STEP2COR | 9-Nov-15 |
| 523523 | RAINBOWPAP | 9-Nov-15 | 522085 | STONEIN | 9-Nov-15 |
| 532690 | RAMSARUP | 9-Nov-15 | 538714 | SUCHITRA | 9-Nov-15 |
| 530925 | RAMSONS | 9-Nov-15 | 506615 | SUNASIAN | 9-Nov-15 |
| 507490 | RANASUG | 9-Nov-15 | 532154 | SUNSHINE | 9-Nov-15 |
| 505800 | RANEHOLDIN | 9-Nov-15 | 512179 | SUNTECK | 9-Nov-15 |
| 504341 | RAVINDT | 9-Nov-15 | 532509 | SUPRAJIT | 9-Nov-15 |
| 532955 | RECLTD | 9-Nov-15 | 539253 | SURYAINDIA | 9-Nov-15 |
| 531952 | RIBATEX | 9-Nov-15 | 514140 | SURYVANSF | 9-Nov-15 |
| 500366 | ROLTA | 9-Nov-15 | 512449 | SVCRES | 9-Nov-15 |
| 517500 | ROTO | 9-Nov-15 | 522175 | SVOGL | 9-Nov-15 |
| 530905 | SAINDUS | 9-Nov-15 | 503659 | SW1 | 9-Nov-15 |
| 500372 | SAMTEL | 9-Nov-15 | 531499 | SYBLY | 9-Nov-15 |
| 500371 | SAMTELIN | 9-Nov-15 | 532890 | TAKE | 9-Nov-15 |
| 530035 | SANTOSHF | 9-Nov-15 | 519091 | TASTYBIT | 9-Nov-15 |
| 516003 | SARDAPLY | 9-Nov-15 | 500400 | TATAPOWER | 9-Nov-15 |
| 511076 | SATINDLTD | 9-Nov-15 | 509917 | TECHCON | 9-Nov-15 |
| 508996 | SATRAPROP | 9-Nov-15 | 533982 | TERASOFT | 9-Nov-15 |
| 511577 | SAVFI | 9-Nov-15 | 532812 | TFL | 9-Nov-15 |
| 516110 | SCANDENT | 9-Nov-15 | 505196 | TIL | 9-Nov-15 |
| 505075 | SETCO | 9-Nov-15 | 522113 | TIMKEN | 9-Nov-15 |
| 532455 | SHALIWIR | 9-Nov-15 | 531035 | TOBUENT | 9-Nov-15 |
| 526981 | SHBAJRG | 9-Nov-15 | 526582 | TPLPLAST | 9-Nov-15 |
| 539111 | SHESHAINDS | 9-Nov-15 | 531712 | TRILOGIC | 9-Nov-15 |
| 524336 | SHHARICH | 9-Nov-15 | 539141 | UFO | 9-Nov-15 |
| 530295 | SHRAJOI | 9-Nov-15 | 531831 | UNISH | 9-Nov-15 |
| 590128 | SHREETULSI | 9-Nov-15 | 519156 | VADILALIND | 9-Nov-15 |
| 512105 | SHRENTH | 9-Nov-15 | 519152 | VADILENT | 9-Nov-15 |
| 512453 | SHRJAGP | 9-Nov-15 | 526775 | VALIANT | 9-Nov-15 |
| 538565 | SHUBHRA | 9-Nov-15 | 502589 | VAPIPPR | 9-Nov-15 |
| 520141 | SIBARAUT | 9-Nov-15 | 539123 | VBIND | 9-Nov-15 |
| 519234 | SIEL | 9-Nov-15 | 539331 | VETO | 9-Nov-15 |
| 532217 | SIELFNS | 9-Nov-15 | 503349 | VICTMILL | 9-Nov-15 |
| 531863 | SIGRUN | 9-Nov-15 | 531266 | VSTILLERS | 9-Nov-15 |
| 507998 | SIMMOND | 9-Nov-15 | 533023 | WABCOINDIA | 9-Nov-15 |
| 526839 | SIPL | 9-Nov-15 | 511690 | WARNER | 9-Nov-15 |
| 531169 | SKPSEC | 9-Nov-15 | 533452 | WEIZFOREX | 9-Nov-15 |

| | | | | | |
|--------|-------------|-----------|--------|------------|-----------|
| 523011 | WEIZMANIND | 9-Nov-15 | 513305 | MORYOIND | 10-Nov-15 |
| 526431 | WELTI | 9-Nov-15 | 523832 | MUKATPIP | 10-Nov-15 |
| 526471 | WINSOMBR | 9-Nov-15 | 500294 | NCC | 10-Nov-15 |
| 511012 | YAMNINV | 9-Nov-15 | 530557 | NCLRESE | 10-Nov-15 |
| 509650 | ZHINDHSG | 9-Nov-15 | 534615 | NECCLTD | 10-Nov-15 |
| 505585 | ZKOVALIN | 9-Nov-15 | 539409 | NEERAJ | 10-Nov-15 |
| 512381 | ZNIVEMER | 9-Nov-15 | 526371 | NMDC | 10-Nov-15 |
| 521163 | ZODIACLOTH | 9-Nov-15 | 538607 | OJASASSET | 10-Nov-15 |
| 523105 | ZPPOLYSA | 9-Nov-15 | 514324 | OMNITEX | 10-Nov-15 |
| 520155 | ABG | 10-Nov-15 | 532817 | ORIENTALTL | 10-Nov-15 |
| 539115 | ALAN SCOTT | 10-Nov-15 | 526588 | PHOTOQUP | 10-Nov-15 |
| 526241 | AMRAPLIN | 10-Nov-15 | 539351 | PRABHAT | 10-Nov-15 |
| 519471 | ANKURPR | 10-Nov-15 | 500346 | PUNJCOMMU | 10-Nov-15 |
| 532994 | ARCHIDPLY | 10-Nov-15 | 538921 | RAFL | 10-Nov-15 |
| 532459 | AUNDEIND | 10-Nov-15 | 500339 | RAIN | 10-Nov-15 |
| 532946 | BANG | 10-Nov-15 | 512319 | RAJLXIN | 10-Nov-15 |
| 513502 | BAROEXT | 10-Nov-15 | 532670 | RENUKA | 10-Nov-15 |
| 530879 | BHILTEX | 10-Nov-15 | 532687 | REPRO | 10-Nov-15 |
| 508939 | BLCISER | 10-Nov-15 | 530461 | SABOOSOD | 10-Nov-15 |
| 532678 | BRFL | 10-Nov-15 | 506642 | SADHNANIQ | 10-Nov-15 |
| 522292 | CHANDNI | 10-Nov-15 | 530265 | SAINIK | 10-Nov-15 |
| 531977 | CHLOGIST | 10-Nov-15 | 504345 | SAMLEPU | 10-Nov-15 |
| 539131 | CLLIMITED | 10-Nov-15 | 509870 | SHAHCON | 10-Nov-15 |
| 512018 | CNIRESLTD | 10-Nov-15 | 532908 | SHARONBIO | 10-Nov-15 |
| 500117 | DCW | 10-Nov-15 | 502563 | SHBHAWPA | 10-Nov-15 |
| 523618 | DREDGECORP | 10-Nov-15 | 523236 | SHRENUJ | 10-Nov-15 |
| 532787 | ESSDEE | 10-Nov-15 | 526901 | SONALAD | 10-Nov-15 |
| 530079 | FAZE3Q | 10-Nov-15 | 513151 | STINDIA | 10-Nov-15 |
| 538319 | GCMCAPI | 10-Nov-15 | 534756 | TARAJEWELS | 10-Nov-15 |
| 590025 | GINNIFILA | 10-Nov-15 | 533941 | THOMASCOTT | 10-Nov-15 |
| 532773 | GLOBALVECT | 10-Nov-15 | 531771 | TOWASOK | 10-Nov-15 |
| 504369 | GRANDMA | 10-Nov-15 | 539040 | TTIL | 10-Nov-15 |
| 532708 | GVKPIL | 10-Nov-15 | 531411 | TUNITEX | 10-Nov-15 |
| 515147 | HALDYNGL | 10-Nov-15 | 504605 | UNIABEXAL | 10-Nov-15 |
| 500440 | HINDALCO | 10-Nov-15 | 526941 | VAICC | 10-Nov-15 |
| 590018 | HISARMET | 10-Nov-15 | 514175 | VARDMNPOLY | 10-Nov-15 |
| 531505 | INDERGR | 10-Nov-15 | 532660 | VIVIMEDLAB | 10-Nov-15 |
| 535958 | INTEGRA | 10-Nov-15 | 509038 | VOLLF | 10-Nov-15 |
| 511208 | IVC | 10-Nov-15 | 503675 | WAGEND | 10-Nov-15 |
| 511092 | JMDTELEFILM | 10-Nov-15 | 531845 | ZENITHBIR | 10-Nov-15 |
| 538765 | JSHL | 10-Nov-15 | 503641 | ZODIACVEN | 10-Nov-15 |
| 516078 | JUMBO | 10-Nov-15 | 500041 | BANARISUG | 11-Nov-15 |
| 523207 | KOKUYOCLN | 10-Nov-15 | 531489 | CGVAK | 11-Nov-15 |
| 530299 | KOTHARIPRO | 10-Nov-15 | 590075 | LAMBODHARA | 11-Nov-15 |
| 506113 | LIFELINE | 10-Nov-15 | 511766 | MUTHTFN | 11-Nov-15 |
| 539226 | MDINDUCTO | 10-Nov-15 | 526397 | ALPHAGEO | 12-Nov-15 |
| 500279 | MIRCELECTR | 10-Nov-15 | 511427 | ATNINTER | 12-Nov-15 |
| 535910 | MMLF | 10-Nov-15 | 532674 | BASML | 12-Nov-15 |
| 503776 | MODIPON | 10-Nov-15 | 519500 | BKV | 12-Nov-15 |

| | | | | | |
|--------|------------|-----------|--------|------------|-----------|
| 533276 | BSLIMITED | 12-Nov-15 | 500212 | IFSL | 13-Nov-15 |
| 530609 | CARNATIN | 12-Nov-15 | 514165 | INDIANACRY | 13-Nov-15 |
| 530859 | COSBOARD | 12-Nov-15 | 500202 | INDLEASE | 13-Nov-15 |
| 511451 | DHARFIN | 12-Nov-15 | 532894 | INDOWIND | 13-Nov-15 |
| 507442 | DHARSUGAR | 12-Nov-15 | 531841 | INDUSFIN | 13-Nov-15 |
| 530909 | ERPSOFT | 12-Nov-15 | 530601 | JAGSONFI | 13-Nov-15 |
| 526468 | EUROLED | 12-Nov-15 | 500378 | JINDALSAW | 13-Nov-15 |
| 503831 | FOMEHOT | 12-Nov-15 | 531861 | JOINDRE | 13-Nov-15 |
| 526558 | JAMEHOT | 12-Nov-15 | 532468 | KAMAHOLD | 13-Nov-15 |
| 538539 | JTAPARIA | 12-Nov-15 | 590066 | KCP | 13-Nov-15 |
| 539393 | KCL | 12-Nov-15 | 532899 | KSCL | 13-Nov-15 |
| 519421 | KSE | 12-Nov-15 | 506079 | LAKPRE | 13-Nov-15 |
| 530339 | LABHCON | 12-Nov-15 | 508306 | LEDOTEA | 13-Nov-15 |
| 532407 | MOSCHIP | 12-Nov-15 | 539400 | MALLCOM | 13-Nov-15 |
| 532234 | NATIONALUM | 12-Nov-15 | 532990 | METKORE | 13-Nov-15 |
| 523630 | NFL | 12-Nov-15 | 538895 | MIHIKA | 13-Nov-15 |
| 523209 | NICCOUCO | 12-Nov-15 | 517344 | MINDTECK | 13-Nov-15 |
| 521080 | PASARI | 12-Nov-15 | 513377 | MMTC | 13-Nov-15 |
| 511108 | SHIVTEX | 12-Nov-15 | 501343 | MOTOGENFIN | 13-Nov-15 |
| 538975 | SHREESEC | 12-Nov-15 | 502168 | NCLIND | 13-Nov-15 |
| 523023 | SINCLAIR | 12-Nov-15 | 530897 | NGIND | 13-Nov-15 |
| 500464 | UCALFUEL | 12-Nov-15 | 535657 | OONE | 13-Nov-15 |
| 524711 | VISTAPH | 12-Nov-15 | 507690 | ORIBEVER | 13-Nov-15 |
| 505520 | ZHEMHOLD | 12-Nov-15 | 535658 | PAWANSUT | 13-Nov-15 |
| 538653 | AMMLTD | 13-Nov-15 | 538730 | PDSMFL | 13-Nov-15 |
| 532645 | BEEYU | 13-Nov-15 | 517059 | SALZER | 13-Nov-15 |
| 532930 | BGREENERGY | 13-Nov-15 | 539124 | SARVOTTAM | 13-Nov-15 |
| 531936 | BLUECHIP | 13-Nov-15 | 539218 | SAUMYA | 13-Nov-15 |
| 523019 | BNRSEC | 13-Nov-15 | 526807 | SEAMECLTD | 13-Nov-15 |
| 526550 | CCHHL | 13-Nov-15 | 538875 | SELLWIN | 13-Nov-15 |
| 500084 | CESC | 13-Nov-15 | 531738 | SILICON | 13-Nov-15 |
| 523489 | CMMHOSP | 13-Nov-15 | 531149 | SRANGMARK | 13-Nov-15 |
| 531041 | COMPEAU | 13-Nov-15 | 532842 | SRHHYPOLTD | 13-Nov-15 |
| 531624 | COUNCODOS | 13-Nov-15 | 521178 | SRMCL | 13-Nov-15 |
| 535486 | DELTALTD | 13-Nov-15 | 523351 | STDSHOE | 13-Nov-15 |
| 532180 | DHANBANK | 13-Nov-15 | 532856 | TIMETECHNO | 13-Nov-15 |
| 531306 | DHPIND | 13-Nov-15 | 538464 | TPROJECT | 13-Nov-15 |
| 526783 | DRAGARWQ | 13-Nov-15 | 538597 | TTIENT | 13-Nov-15 |
| 500125 | EIDPARRY | 13-Nov-15 | 511507 | USHAKIRA | 13-Nov-15 |
| 531750 | ENCORE | 13-Nov-15 | 523888 | VRWODAR | 13-Nov-15 |
| 512369 | ENNORE | 13-Nov-15 | 532300 | WOCKPHARMA | 13-Nov-15 |
| 531508 | EVEREADY | 13-Nov-15 | 516030 | YASHPPR | 13-Nov-15 |
| 532754 | GMRINFRA | 13-Nov-15 | 532403 | 4THGEN | 14-Nov-15 |
| 534328 | HEXATRADEX | 13-Nov-15 | 531047 | ADVPOWER | 14-Nov-15 |

| | | | | | |
|--------|------------|-----------|--------|------------|-----------|
| 516020 | AGIOPAPER | 14-Nov-15 | 531598 | NIMBUSFOO | 14-Nov-15 |
| 533221 | AHLWEST | 14-Nov-15 | 530127 | NPRFIN | 14-Nov-15 |
| 532975 | AISHWARYA | 14-Nov-15 | 530367 | NRBBEARING | 14-Nov-15 |
| 519216 | AJANTSOY | 14-Nov-15 | 538894 | OCTAL | 14-Nov-15 |
| 532351 | AKSHOPTFBR | 14-Nov-15 | 521062 | OCTAVE | 14-Nov-15 |
| 517546 | ALFATRAN | 14-Nov-15 | 538537 | OMANSH | 14-Nov-15 |
| 508869 | APOLLOHOSP | 14-Nov-15 | 531092 | OMMETALS | 14-Nov-15 |
| 520121 | ARCEEIN | 14-Nov-15 | 513430 | PARTHAL | 14-Nov-15 |
| 526843 | ATLANTADEV | 14-Nov-15 | 533107 | PIPAVAVDOC | 14-Nov-15 |
| 530479 | ATLINFRA | 14-Nov-15 | 500333 | PIXTRANS | 14-Nov-15 |
| 530885 | AURUMSOFT | 14-Nov-15 | 511016 | PREMCAP | 14-Nov-15 |
| 511139 | BAJRFIN | 14-Nov-15 | 526813 | RAGHUNAT | 14-Nov-15 |
| 517203 | BEELE | 14-Nov-15 | 531552 | RAGHUTOB | 14-Nov-15 |
| 522251 | CENLUB | 14-Nov-15 | 531500 | RAJESHEXPO | 14-Nov-15 |
| 531473 | CETHARI | 14-Nov-15 | 530699 | RAJRAYON | 14-Nov-15 |
| 532992 | CHLLTD | 14-Nov-15 | 513043 | REMIEDEL | 14-Nov-15 |
| 532324 | CINEVISTA | 14-Nov-15 | 512487 | REMIELEK | 14-Nov-15 |
| 531278 | ELIXIR | 14-Nov-15 | 505658 | REMIPRO | 14-Nov-15 |
| 522017 | FLUIDOM | 14-Nov-15 | 504360 | REMISIN | 14-Nov-15 |
| 521167 | FRONTBUSS | 14-Nov-15 | 511149 | REMITR | 14-Nov-15 |
| 532716 | GILLANDERS | 14-Nov-15 | 519097 | RITESHIN | 14-Nov-15 |
| 531840 | IECEDU | 14-Nov-15 | 531931 | SAICAPI | 14-Nov-15 |
| 531129 | INANI | 14-Nov-15 | 511066 | SAKTHIFIN | 14-Nov-15 |
| 500207 | INDORAMA | 14-Nov-15 | 530125 | SAMRATPH | 14-Nov-15 |
| 533154 | INFINITE | 14-Nov-15 | 526532 | SFPIL | 14-Nov-15 |
| 530259 | INTSTOIL | 14-Nov-15 | 539148 | SHIVALIK | 14-Nov-15 |
| 511618 | JIKIND | 14-Nov-15 | 500387 | SHREECEM | 14-Nov-15 |
| 503669 | KKFIN | 14-Nov-15 | 513414 | SMPL | 14-Nov-15 |
| 532673 | KMSUGAR | 14-Nov-15 | 530177 | SPSINT | 14-Nov-15 |
| 532942 | KNRCON | 14-Nov-15 | 514442 | SRIKPRIND | 14-Nov-15 |
| 533482 | KRIINFRA | 14-Nov-15 | 532887 | SUJANATWR | 14-Nov-15 |
| 526947 | LAOPALA | 14-Nov-15 | 517224 | SUJANAUNI | 14-Nov-15 |
| 590078 | MAITHANALL | 14-Nov-15 | 523283 | SUPERHOUSE | 14-Nov-15 |
| 516007 | MANGTIMBER | 14-Nov-15 | 521188 | UNITEDTE | 14-Nov-15 |
| 517467 | MARSONS | 14-Nov-15 | 513397 | VALLABHSQ | 14-Nov-15 |
| 534338 | MAXHEIGHTS | 14-Nov-15 | 513534 | VARDHINDQ | 14-Nov-15 |
| 533152 | MBLINFRA | 14-Nov-15 | 509055 | VISAKAIND | 14-Nov-15 |
| 531146 | MEDICAMEQ | 14-Nov-15 | 590038 | VISUINTL | 14-Nov-15 |
| 505594 | MULTIIN | 14-Nov-15 | 532144 | WELCORP | 14-Nov-15 |
| 538395 | NAM | 14-Nov-15 | 590035 | TIRFOAM | 15-Nov-15 |
| 530119 | NATRAJPR | 14-Nov-15 | 511626 | RRFIN | 14-Dec-15 |
| 526721 | NICCOPAR | 14-Nov-15 | | | |

Earning Estimate Q2FY16

| BSE CODE | NSE CODE | SALES Rs (cr.) | SALES YOY | PAT Rs Cr | PAT YOY |
|----------|-----------|----------------|-----------|-----------|---------|
| 500477 | ASHOKLEY | 5165.3 | 60.50 | 334.2 | 2768.70 |
| 500530 | BOSCHLTD | 2939.1 | 15.00 | 366.5 | 19.60 |
| 505200 | EICHERMOT | 3092.4 | 35.90 | 265.9 | 61.20 |
| 500520 | M&M | 8509.1 | (7.30) | 981.6 | 0.80 |

| | | | | | |
|--------|------------|---------|---------|---------|---------|
| 500570 | TATAMOTORS | 56400.4 | (6.90) | 2438.4 | (25.60) |
| 500002 | ABB | 2027.4 | 9.90 | 58 | 29.00 |
| 500103 | BHEL | 5611.5 | (6.90) | 293.2 | 134.90 |
| 500480 | CUMMINSIND | 1216.3 | 6.30 | 168 | (17.00) |
| 500575 | VOLTAS | 1074.9 | 9.20 | 59.1 | 18.40 |
| 530005 | INDIACEM | 1081.6 | (4.40) | 14.9 | 98.60 |
| 500260 | RAMCOCEM | 911.1 | (1.20) | 73.5 | (18.00) |
| 500825 | BRITANNIA | 2219.5 | 13.50 | 221.4 | 51.50 |
| 500676 | GSKCONS | 1230.5 | 10.50 | 195.7 | 22.10 |
| 531642 | MARICO | 1593.5 | 11.50 | 148.6 | 25.70 |
| 532432 | MCDOWELL-N | 2361.4 | 9.50 | 70.9 | 53.90 |
| 524804 | AUROPHARMA | 3437.6 | 19.30 | 490.7 | 22.10 |
| 500087 | CIPLA | 3464.1 | 25.20 | 505.5 | 69.20 |
| 524715 | SUNPHARMA | 6974.5 | (12.50) | 1078.9 | (47.90) |
| 533162 | HATHWAY | 279.7 | 6.20 | -37.8 | Loss |
| 532689 | PVR | 472.2 | 18.00 | 32.1 | 248.70 |
| 500113 | SAIL | 8920.7 | (23.60) | -1116.4 | PL |
| 500470 | TATASTEEL | 31576.1 | (11.70) | -357.3 | PL |
| 532155 | GAIL | 13606.3 | (3.20) | 420.9 | (67.70) |
| 530965 | IOC | 81388.1 | (26.90) | 1167.3 | LP |
| 532514 | IGL | 970.6 | 2.30 | 119.4 | (0.20) |
| 500312 | ONGC | 19778.6 | (2.90) | 4286.2 | (21.30) |
| 532868 | DLF | 2073.5 | 3.00 | 114 | 4.50 |
| 533150 | GODREJPROP | 1378.6 | 369.00 | 99 | 112.30 |
| 533273 | OBEROIRLTY | 222.3 | 19.80 | 81.2 | 15.10 |
| 503100 | PHOENIXLTD | 89 | 14.30 | 43.4 | 18.80 |
| 533155 | JUBLFOOD | 608.9 | 21.50 | 34 | 16.10 |
| 532129 | HEXAWARE | 824.8 | 23.00 | 114.7 | 33.30 |
| 532755 | TECHM | 6547.9 | 19.30 | 710.2 | (1.30) |
| 532712 | RCOM | 5492.1 | 1.60 | 112.6 | (46.90) |
| 532898 | POWERGRID | 5042.1 | 21.40 | 1407.6 | 16.40 |
| 532524 | PTC | 4862.5 | 16.00 | 69.2 | (27.80) |
| 500390 | RELINFRA | 2482.9 | 0.60 | 365.9 | 2.80 |
| 500101 | ARVIND | 2220 | 13.00 | 80.2 | (15.50) |
| 500043 | BATA | 608.2 | 11.00 | 48.9 | 25.50 |
| 500870 | CASTROL | 794.3 | (0.70) | 159.9 | 36.30 |
| 532777 | NAUKRI | 178.1 | 20.70 | 41 | 20.70 |
| 524084 | MONSANTO | 90.4 | 0.00 | 1.4 | LP |
| 532134 | BANKBARODA | 3498.2 | 2.90 | 1092 | (1.10) |
| 532483 | CANBK | 2608 | 10.10 | 538.1 | (14.20) |
| 532814 | INDIANB | 1137.9 | (3.30) | 264.4 | (15.90) |
| 500315 | ORIENTBANK | 1332 | 6.90 | 338.4 | 16.10 |
| 532461 | PNB | 4248.8 | 2.40 | 966.3 | 68.00 |
| 500112 | SBIN | 14200.2 | 7.00 | 3287.7 | 6.00 |
| 532477 | UNIONBANK | 2210.4 | 6.00 | 521.4 | 40.40 |
| 532810 | PFC | 2836.2 | 13.80 | 1734.7 | 15.30 |
| 535322 | REPCOHME | 74.9 | 26.30 | 38.4 | 19.20 |

Result Q2FY16

| NSE CODE | BSE CODE | SALES Rs (cr.) | SALES YOY | PAT Rs Cr | PAT YOY |
|------------|----------|----------------|-----------|-----------|----------|
| IFBIND | 505726 | 368 | 17.40 | 9.3 | (39.65) |
| TTML | 532371 | 746.6 | 6.60 | -155.7 | 2.31 |
| JMCPROJECT | 522263 | 602.2 | 3.50 | 9.6 | 121.71 |
| CENTENKA | 500280 | 290.5 | (6.90) | 11.1 | (11.41) |
| DIVISLAB | 532488 | 964 | 15.70 | 295 | 28.46 |
| GRANULES | 532482 | 366 | 19.00 | 31 | 40.40 |
| CARBORUNIV | 513375 | 329 | (40.00) | 39.7 | 132.60 |
| COX&KINGS | 533144 | 685 | (21.00) | 118.2 | 225.40 |
| ATULAUTO | 531795 | 143 | 9.00 | 13.5 | 23.06 |
| JKCEMENT | 532644 | 870.8 | 4.80 | 13.7 | (57.61) |
| ESCORTS | 500495 | 801.66 | (19.20) | 16.18 | 305.85 |
| TTKHEALTH | 507747 | 129.82 | 7.80 | 4.71 | 24.60 |
| TRIL | 532928 | 139.79 | 12.70 | -2.35 | 64.39 |
| ADANIPTS | 532921 | 1843 | 11.40 | 667.46 | 16.40 |
| GREAVESCOT | 501455 | 424.73 | (3.80) | 54.26 | 98.83 |
| SUNDRMFAST | 500403 | 660.31 | 6.70 | 51.74 | 1.27 |
| AIAENG | 532683 | 488.32 | (14.70) | 93.48 | (13.50) |
| INDIACEM | 530005 | 1082 | (4.70) | 41.04 | 447.93 |
| UBL | 532478 | 1132.61 | 4.30 | 48.2 | 13.09 |
| ADANIPT | 512599 | 11389 | (19.00) | 298 | 41.70 |
| CAPF | 532938 | 435.2 | 25.20 | 41 | 51.60 |
| ESTER | 500136 | 202.2 | (16.10) | 4 | 339.56 |
| ANDREWYULE | 526173 | 110.8 | 7.60 | 15.1 | 12.35 |
| MAYURUNIQ | 522249 | 135.7 | 3.30 | 19.7 | 25.96 |
| LAXMIMACH | 500252 | 620 | 5.20 | 56.6 | 20.84 |
| SUBEX | 532348 | 79.5 | (12.20) | 15.6 | 62.20 |
| ECLERX | 532927 | 328.5 | 41.70 | 93 | 49.30 |
| DCMSHRIRAM | 523367 | 1439.5 | 0.80 | 63 | 36.10 |
| NILKAMAL | 523385 | 481.5 | 4.70 | 25.7 | 275.73 |
| UBL | 532478 | 1132.5 | 4.30 | 48.2 | 13.09 |
| OBEROIRLTY | 533273 | 189.2 | 2.00 | 72.4 | 2.60 |
| CARERATING | 534804 | 78.2 | 5.30 | 37.8 | (27.88) |
| JPINFRATEC | 533207 | 337.5 | (60.60) | -159.6 | (237.70) |
| BRIGADE | 532929 | 340.1 | 5.90 | 38.7 | 79.92 |
| SONATSOFTW | 532221 | 398.5 | (1.70) | 39.3 | 26.30 |
| MCDOWELL-N | 532432 | 2145 | (1.50) | 929 | 3438.12 |
| RUCHISOYA | 500368 | 5652.09 | (20.00) | 7.07 | 35.44 |
| IMPAL | 590065 | 121.06 | (3.50) | 6.19 | (39.55) |
| GAIL | 532155 | 14164.92 | 0.20 | 440.51 | (66.19) |
| TECHM | 532755 | 6615.54 | 20.50 | 785.25 | 9.10 |
| KRBL | 530813 | 899.4 | 28.50 | 78.27 | (2.90) |
| FINCABLES | 500144 | 605.4 | (4.90) | 64.9 | (17.79) |
| TNPETRO | 500777 | 214.03 | (2.60) | 1.63 | 154.70 |
| PFC | 532810 | 7022.22 | 11.40 | 1695.3 | 20.36 |
| NESCO | 505355 | 67.47 | 44.70 | 37.36 | 40.66 |
| BERGPAINT | 509480 | 1030.5 | (6.70) | 76.21 | 13.70 |
| MCLEODRUSS | 532654 | 510.9 | 3.20 | 216.48 | (2.27) |
| RPOWER | 532939 | 2766 | 55.10 | 345.63 | 36.60 |

| | | | | | |
|------------|--------|---------|---------|---------|--------|
| ADANIPOWER | 533096 | 2943.55 | (29.00) | -184.55 | 76.90 |
| PVR | 532689 | 474.5 | 18.80 | 41.05 | 346.20 |
| ABB | 500002 | 1968.67 | 6.70 | 58.74 | 30.59 |

Economic Calendar

| Country | Monday 2th Nov 15 | Tuesday 3th Nov 15 | Wednesday 4th Nov 15 | Thursday 5th Nov 15 | Friday 6th Nov 15 |
|---------------------|--|---|---|--|---|
| US | Final Manufacturing PMI , ISM Manufacturing PMI , Construction Spending m/m , ISM Manufacturing Prices , Loan Officer Survey | Factory Orders m/m , IBD/TIPP Economic Optimism , Total Vehicle Sales | ADP Non-Farm Employment Change , Trade Balance , ISM Non-Manufacturing PMI , Crude Oil Inventories . | Challenger Job Cuts y/y , Unemployment Claims , Prelim Nonfarm Productivity q/q , Prelim Unit Labor Costs q/q , Natural Gas Storage , RICS House Price Balance . | Non-Farm Employment Change , Unemployment Rate , Average Hourly Earnings m/m , NIESR GDP Estimate , Consumer Credit m/m . |
| UK/EURO ZONE | Spanish Manufacturing PMI , German Retail Sales m/m , Italian Manufacturing PMI , French Final Manufacturing PMI , Manufacturing PMI , EU Economic Forecasts , | BRC Shop Price Index y/y , Spanish Unemployment Change | Halifax HPI m/m , Spanish Services PMI , Italian Services PMI , French Final Services PMI , German Final Services PMI , Final Services PMI , Services PMI , PPI m/m . | German Factory Orders m/m , ECB Economic Bulletin , Retail PMI , 30-y Bond Auction , Retail Sales m/m , BOE Inflation Report , MPC Official Bank Rate Votes , Monetary Policy Summary , Official Bank Rate , Asset Purchase Facility , MPC Asset Purchase Facility Votes | German Industrial Production m/m , Construction PMI , Manufacturing Production m/m , Trade Balance , |
| INDIA | Auto sales No, HSBC Manufacturing PMI no , CAD Data. | Auto sales No | | HSBC India Services PMI | |

Narnolia Research Lab

Stellar IT Park | 5th Floor | Office Space No. 6 | Tower-IInd Plot No. C-25 | Sector-62 |
Noida | Ph : 0120-4215110

Central Strategy Desk - Kolkata

124 | 1st Floor | 7/1 Lords Sinha Road | Kolkata - 71
Ph : 033-22821500 | M : 93347 14418, 98302 69810