

SGX NIFTY : 7824 (22 Pt Up)

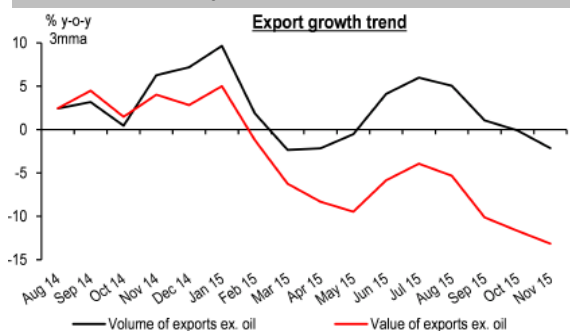
Quote of the Day

"If you understood a business perfectly and the future of the business, you would need very little in the way of a margin of safety. So, the more vulnerable the business is, assuming you still want to invest in it, the larger margin of safety you'd need. If you're driving a truck across a bridge that says it holds 10,000 pounds and you've got a 9,800 pound vehicle, if the bridge is 6 inches above the crevice it covers, you may feel okay, but if it's over the Grand Canyon, you may feel you want a little larger margin of safety..."

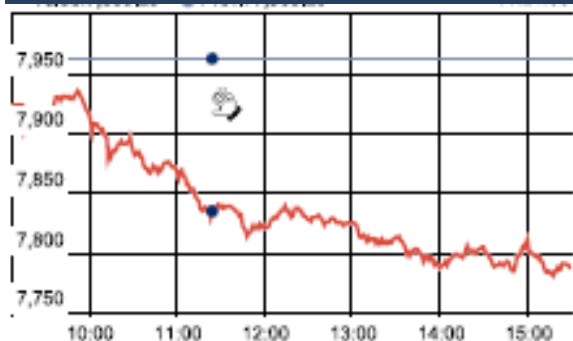
Warren Buffett

Chart of the Day

Export Growth Trend



Index Action Nifty (4th Jan 16)



Index

Contents	Page	Coverage
News	2	Update
Economic Calendar	3	Update

Market

Name	Value	Change
Sensex	25,623.35	(537.55)
Nifty	7791.30	(171.90)
DOW	17,148.94	(276.09)
NASDAQ	4,903.09	(104.32)
CAC	4,522.45	(114.51)
DAX	10,283.44	(459.57)
FTSE	6,093.43	(148.89)
NIKKEI	18,527.35	76.37
HANG SENG	21,315.29	(11.83)
EW ALL SHARE	13885.58	(219.39)

Instituional Turnover

FII

Investor	Buy(Cr.)	Sale(Cr.)	Net(Cr.)
4-Jan-16	2097.07	2764.22	228.11
Jan,16	2637.84	3076.88	228.11
2016	2637.84	3076.88	228.11

DII

Investor	Buy(Cr.)	Sale(Cr.)	Net(Cr.)
4-Jan-16	783.36	864.60	(81.24)
Jan,16	1566.72	1729.20	-81.24
2016	1566.72	1729.20	(81.24)

Commodity Price

Commodity/Currencies	Value	
GOLD	25397.00	↑
SILVER	33533.00	↑
CRUDEOIL	37.08	↓
COPPER	309.80	↓
NATURALGAS	157.80	↑
DOLLAR/RS.	66.61	↑
EURO/RS.	71.94	↑
POUND/RS.	97.90	↓

Market Snapshot

Top Price Performers

Top Performers 1D	% Change	Top Performers 1W	% Change	Top Performers 1M	% Change
DOLATINVES	20.00	EUROCERA	90.24	PARACABLES	110.80
SURANAIND	20.00	INDOSOLAR	52.22	GEMINI	109.28
ROHLTD	19.96	GMBREW	51.85	DONEAR	108.46
SUDAR	19.96	KAVVERITEL	51.25	SPENTEX	93.16
SURANAT&P	19.94	KSOILS	49.00	INFOMEDIA	82.59

Worst Performers 1D	% Change	Worst Performers 1W	% Change	Worst Performers 1M	% Change
CALSREF	(12.50)	RUSHIL	(17.81)	SHRENUJ	(54.51)
PEERABASAN	(10.80)	CADILAHC	(17.42)	KGENT	(25.04)
SUNDARAM	(8.95)	SANCIA	(16.49)	OMNITECH	(24.04)
TIMEXWATCH	(8.44)	KGENT	(15.71)	PANCHMSTEL	(22.57)
PARABDRUGS	(7.59)	SUNDARAM	(14.24)	AMTEKINDIA	(21.59)

Top News

- **Hero Motor Crop Dec 2015 Auto sales No** : -5% (YoY) , -8.7% (MoM) . Tata Motor Dec 2015 Auto sales No : -4.2 % (YoY) , +2.7 % (MoM) . TVS Motor Dec 2015 Auto sales No : +5.3 % (YoY) , -10.4 % (MoM) . Ashokley Dec 2015 Auto sales No : +31.4 % (YoY) , +36.4 % (MoM) . Maruti Dec 2015 Auto sales No : + 8.5 % (YoY) , -1.4 % (MoM) . M&M Dec 2015 Auto sales No : + 4.4 % (YoY) , -8.4 % (MoM) . Bajaj Auto : Dec 2015 Auto sales No : - 0.1 % (YoY) , -6.7 % (MoM) .
- **Welspun Corp** said it has received tax demand notice of Rs 100 crore in respect of a manufacturing unit in Anjar, Gujarat. The demand notices from the Assistant Commissioner of Commercial Tax, Gandhidham, pertains to a period between February 1, 2014 to September 30, 2015, in respect of a manufacturing unit at Anjar . The demand notice of Rs 100.46 crore includes tax amount of Rs 37.53 crore, and interest and penalty amount of Rs 62.9 crore.
- **MOIL** has slashed prices of various grades of manganese ore by up to 10 percent for the January-March quarter. The price of all grades of SMGR (Mn 30 percent) and SMGR Low (Mn 25%) is reduced by 10 percent on the previous quarter prices
- **Sebi** has imposed a fine of Rs 10 lakh on state-run Vijaya Bank for alleged violation of norms related to debenture trustee. Vijaya Bank is registered with Securities and Exchange Board of India (Sebi) as a debenture trustee.
- **Punj Lloyd** said it has won four highway projects worth Rs 1,555 crore in Bihar, Chhattisgarh, Odisha and Punjab from the central government. The company said the Bihar project worth Rs 567 crore entails four-laning of 60 km of the Simaria-Khagaria section of NH31. The Chhattisgarh package, worth Rs 513 crore, comprises the four/six laning of 48 km of the Raipur-Simga section of NH200 in Chhattisgarh. This contract includes the bypass and 22 supporting structures like flyover, vehicular underpass (VUP) and bridges
- **Videocon Industries** has restructured its USD 194.4 million foreign currency convertible bonds (FCCBs) by repaying half the amount in cash and redeeming the rest in new five-year bonds at lower cost . The city-headquartered company settled USD 97.20 million plus applicable interest and costs in cash, and the rest USD 97.20 million was exchanged into a new FCCB facility at 4.30 percent inter
- **IRB** bags the largest project in road sector costing `10,050 cr from Ministry of Road Transport on annuity basis . IRB to construct a tunnel on Srinagar-Leh highway in J&K . Tunnel length of 14.08 kms
- **The Caixin Purchasing Managers' Index (PMI)** fell to 48.2 in December, from 48.6 in November, contracting for a tenth month and coming in below a Reuters poll forecast for 49.0. Official PMI data released over the weekend showed the index was at 49.7 in December, in line with forecasts from a Reuters poll and up a tad from November's 49.6.
- **U.K. manufacturing PMI** fell to a seasonally adjusted 51.9 last month from a revised reading of 52.5 in November. Analysts had expected the index to inch up to 52.7 in December.
- **U.S. index of purchasing managers fell** to 48.2 last month from a reading of 48.6 in November. Analysts had expected the manufacturing PMI to inch up to 49.0 in December.
- **Reserve Bank of Australia** said that Australian Private Sector Credit rose to a seasonally adjusted 0.4%, from 0.7% in the preceding month. Analysts had expected Australian Private Sector Credit to rise 0.6% last month.
- **South Korean CPI** rose to a seasonally adjusted annual rate of 1.3%, from 1.0% in the preceding month. Analysts had expected South Korean CPI to rise to 1.1% last month.

Economic Calendar

Country	Monday Jan 16	Tuesday 5th Jan 16	Wednesday 6th Jan 16	Thursday 7th Jan 16	Friday 8th Jan 16
US	ISM Manufacturing PMI , Construction Spending m/m .	Total Vehicle Sales .	ADP Non-Farm Employment Change ,Trade Balance , ISM Non-Manufacturing PMI , FOMC Meeting Minutes .	Unemployment Claims.	Unemployment Rate , Non-Farm Employment Change , Unemployment Rate .
UK/EURO ZONE	ret Lending to Individuals m/m , Manufacturing PMI , Spanish Manufacturing PMI .	Spanish Unemployment Change , Construction PMI ,	Services PMI , German Final Services PMI , Halifax HPI m/m .	Unemployment Rate, German Retail Sales m/m, German Factory Orders m/m,	Trade Balance .
INDIA	Auto No		HSBC Service PMI No .		



(Regn. No. : INP 000004011)

Narnolia Securities Ltd.

Narnolia Research Lab

Stellar IT Park | 5th Floor | Office Space No. 6 | Tower-II/nd Plot No. C-25 | Sector-62 | Noida | Ph :
0120-4215110

Central Strategy Desk - Kolkata

124 | 1st Floor | 7/1 Lords Sinha Road | Kolkata - 71
Ph : 033-22821500 | M : 93347 14418, 98302 69810