

SGX NIFTY : 7725 (60 Pt Up)

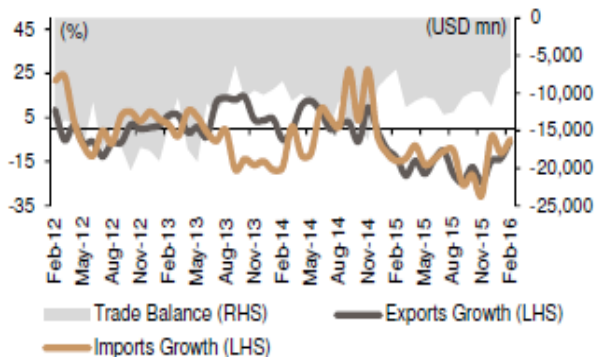
Quote of the Day

"Making an investment decision is like formulating a scientific hypothesis and submitting it to a practical test. The main difference is that the hypothesis that underlies an investment decision is intended to make money and not to establish a universally valid generalization."

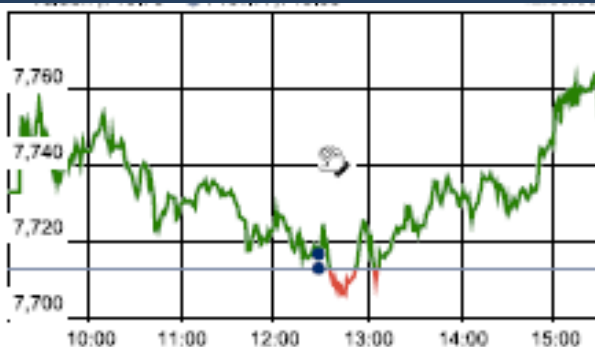
George Soros

Chart of the Day

Indirect Tax Trend



Index Action Nifty (4th Apr 16)



Index

Contents	Page	Coverage
News	2	Update
Economic Calendar	3	Update

Market

Name	Value	Change
Sensex	25,399.65	130.01
Nifty	7758.80	45.75
DOW	17,602.30	120.81
NASDAQ	4,891.20	(22.74)
CAC	4,345.22	22.98
DAX	9,822.08	27.44
FTSE	6,164.22	18.67
NIKKEI	15,778.37	(344.90)
HANG SENG	20,220.63	(278.29)
EW ALL SHARE	13383.34	68.25

Instituional Turnover

FII

Investor	Buy(Cr.)	Sale(Cr.)	Net(Cr.)
04-Apr-16	2948.11	2711.29	236.82
Mar,16	77057.77	61888.65	15169.12
2016	220195.23	231238.31	(11043.08)

DII

Investor	Buy(Cr.)	Sale(Cr.)	Net(Cr.)
04-Apr-16	1311.55	1645.29	(333.74)
Mar,16	21356.30	30887.02	(9530.72)
2016	103271.27	88351.22	14920.05

Commodity Price

Commodity/Currencies	Value	
GOLD	28374.00	↓
SILVER	35581.00	↓
CRUDEOIL	36.48	↑
COPPER	314.25	↓
NATURALGAS	133.90	↑
DOLLAR/RS.	66.20	↓
EURO/RS.	75.45	↑
POUND/RS.	94.22	↑

Market Snapshot

Top Price Performers

Top Performers 1D	% Change	Top Performers 1W	% Change	Top Performers 1M	% Change
KSLIND	20.00	UGARSUGAR	54.86	THIRUSUGAR	106.67
ISMTLTD	20.00	INDTODE	53.72	OU DHSUG	100.50
RELAXO	19.99	KSOILS	49.00	UPERGANGES	100.33
MAHSEAMLES	19.97	DCMSRMIND	41.42	DHARSUGAR	93.11
JINDCOT	19.91	UTTAMSUGAR	40.13	UTTAMSUGAR	91.76

Worst Performers 1D	% Change	Worst Performers 1W	% Change	Worst Performers 1M	% Change
COMFINTE	(10.53)	IVRCLINFRA	(22.51)	RAINBOWPAP	(50.17)
KGL	(9.35)	RAINBOWPAP	(21.53)	SHRENUJ	(33.33)
BILENERGY	(9.17)	RICOHQ	(20.20)	ROLATAN	(31.40)
RAINBOWPAP	(7.99)	CENTRUM	(19.87)	TFL	(30.63)
MVL	(7.89)	ABGSHIP	(17.15)	GLOBOFFS	(30.61)

Top News

- **Sadbhav Eng.** refinance it's Hyderabad Yadgiri Tollway Pvt. Ltd. Rupee Debt loan

- > New ruppe debt taken from other lender with revise term and condition

- > Outstanding rupee loan is 231.979 Cr as on 31st March

- > Outstanding ECB 24.304 USD mn as on 31st March

- > Toll revenue for 9 months 39.245 Cr

Sailent feature of New Debt Facilities

- > Reduction in Intreset Rate

- > Extension of repayment pattern covering the majority balance concession period

- > Tie -up for the first major maintance expenses (Subject to NHA approval)

- > Issuance of Non convertible debenture bonds to Infrastructure Debt Funds

- > Refinancing Existing ECB facilities (post RBI approval)

- **MBL** won 2 NHA project worth 2126 Cr on Haybrid Annuity basis

(1) 4 Lanning of Chutmalpur - Ganeshpur section of NH-72 from km 0.00 to km 16(Design chainage km 17.90 Km) & Roorkee - Chutmalpur - Gagalheri section of NH 73 km from 0.00 km to 33 km (design chainage km 35.4) in Utatarakhand and UP under NHPD-IV . (2) 4 Lanning of Gagalheri- Sharanpur- Yamunanagar section of NH-73 From km 33 to km 71.640 km in UP under NHDP-IV

- **Cox & Kings** has sold 100 percent each in LateRooms UK and Superbreak business to Malvern Enterprises UK . It received 20 million pound through stake sale in LateRooms while its 65.58 percent-owned subsidiary Holidaybreak got a net cash of 9.25 million post stake divestment in Superbreak. C&K bought a 49 percent stake in Malvern for 6.37 million pound while Malvern is 51 percent owned by Europe-based private equity investor.

- **Gammon India** has sold its civil engineering, procurement and construction (EPC) business to Thailand's GP Group in a deal pegged at Rs 250 crore. Company will invest in tranches of Rs 26 crore and Rs 224 crore into Gammon Retail Infra Pvt Ltd, the group's EPC arm.

- **Strides Shasun** has completed the acquisition of three brands of Sweden-based Moberg Pharma. The company's wholly-owned subsidiary Strides Pharma Inc has entered into an agreement with Moberg Pharma, Sweden, and its affiliates to acquire Jointflex, Fergon and Vanquish brands for a total consideration of USD 10 million plus inventory value at closing. The acquisition will strengthen the company's strategy to build a global OTC franchise

- **Yes Bank** has raised Rs 545 crore by issuing Basel-III compliant tier-II bonds on private placement basis. The issue was closed on March 31, 2016 . The issue was rated "ICRA AA+hyb" by ICRA and "CARE AA+" by CARE. The Bonds will be listed on the BSE Limited.

- **Eurostat said that the rate of unemployment** fell to a seasonally adjusted 10.3%, from 10.4% in the preceding month whose figure was revised up from 10.3%. Analysts had expected the unemployment rate to remain unchanged at 10.3% last month.

- **Euro zone PPI** fell to a seasonally adjusted -0.7%, from -1.1% in the preceding month whose figure was revised down from -1.0%. Analysts had expected Euro zone PPI to fall -0.6% last month.

- **U.K. construction purchasing managers' index** remained at a seasonally adjusted 54.2 last month unchanged from the reading in February. Economists had expected the index to inch down to 54.0 in February.

- **Turkish PPI fell to a seasonally adjusted -0.40%**, from -0.20% in the preceding month. Analysts had expected Turkish PPI to rise 0.50% last month.

- **Markit said that HSBC Markit Manufacturing PMI** rose to a seasonally adjusted annual rate of 52.4, from 51.1 in the preceding quarter. Analysts had expected HSBC Markit Manufacturing PMI to rise to 51.5 in the last quarter.

Economic Calendar

Country	Monday 4th April 16	Tuesday 5th April 16	Wednesday 6th April 16	Thursday 7th April 16	Friday 8th April 16
US	Labor Market Conditions Index m/m .	Trade Balance , Final Services PMI , ISM Non-Manufacturing PMI , IBD/TIPP Economic Optimism .	Crude Oil Inventories , FOMC Meeting Minutes,	Unemployment Claims , JOLTS Job Openings , Natural Gas Storage , Consumer Credit m/m , Treasury Currency Report .	NFIB Small Business Index , Wholesale Inventories m/m .
UK/EURO ZONE	Construction PMI , Spanish Unemployment Change , PPI m/m .	German Factory Orders m/m ,Spanish Services PMI , Italian Services PMI , French Final Services PMI , Services PMI , Retail Sales m/m .	Halifax HPI m/m ,Retail PMI , Housing Equity Withdrawal q/q , German Industrial Production m/m .	French Gov Budget Balance ,French Trade Balance , FPC Meeting Minutes .	Manufacturing Production m/m ,Goods Trade Balance , Industrial Production m/m , German Trade Balance , French Industrial Production m/m .
INDIA		RBI Credit Policy	Nikkei Services PMI		



(Regn. No. : INP 000004011)

Narnolia Securities Ltd.

Narnolia Research Lab

Stellar IT Park | 5th Floor | Office Space No. 6 | Tower-IIInd Plot No. C-25 | Sector-62 | Noida | Ph : 0120-4215110

Narnolia Securities Ltd.

201 | 2nd Floor | Marble Arch Building | 236B-AJC Bose Road Kolkata-700 020 Ph : 033-40501500
Email : narnolia@narnolia.com website :www.narnolia.com