

SGX NIFTY : 8029 (71 Pt Up)

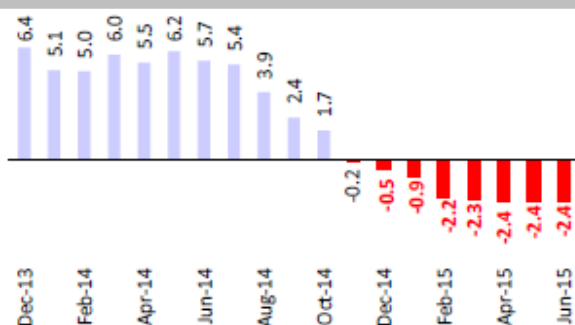
Quote of the Day

"We've long felt that the only value of stock forecasters is to make fortune tellers look good. Even now, Charlie (Munger) and I continue to believe that short-term market forecasts are poison and should be kept locked up in a safe place, away from children and also from grown-ups who behave in the market like children."

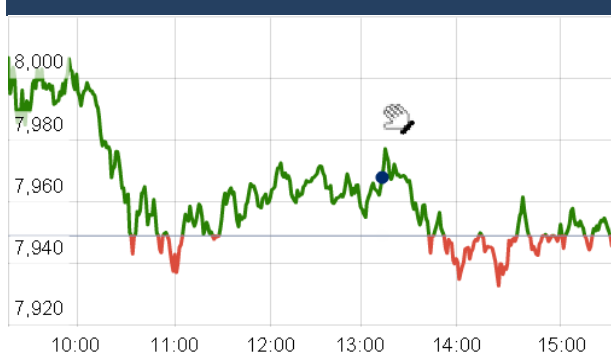
Warren Buffett

Chart of the Day

WPI Trend



Index Action Nifty (1th Oct 15)



Index

Contents	Page	Coverage
News	2	Update
Economic Calendar	3	Update

Market

Name	Value	Change
Sensex	26,154.83	376.16
Nifty	7948.90	105.60
DOW	16,472.37	200.36
NASDAQ	4,707.77	80.69
CAC	4,458.88	32.34
DAX	9,553.07	43.52
FTSE	6,129.98	57.51
NIKKIE	17,886.29	161.16
HANG SENG	21,851.80	344.91
EW ALL SHARE	13733.28	196.38

Instituional Turnover

FII

Investor	Buy(Cr.)	Sale(Cr.)	Net(Cr.)
01-Oct-15	4111.22	4062.62	48.60
Oct,15	37316.55	39616.51	(2299.96)
2015	758808.10	738956.85	19851.25

DII

Investor	Buy(Cr.)	Sale(Cr.)	Net(Cr.)
01-Oct-15	1870.86	1718.68	152.18
Oct,15	15792.35	14354.72	1437.63
2015	292580.59	265440.42	27140.17

Commodity Price

Commodity/Currencies	Value	
GOLD	26074.00	↓
SILVER	34544.00	↓
CRUDEOIL	45.23	↓
COPPER	337.72	↓
NATURALGAS	161.90	↓
DOLLAR/RS.	65.51	↑
EURO/RS.	7338.00	↑
POUND/RS.	99.38	↑

Market Snapshot

Top Price Performers

Top Performers 1D	% Change	Top Performers 1W	% Change	Top Performers 1M	% Change
MLKFOOD	20.00	CANDC	104.49	FARMAXIND	136.36
IMFA	20.00	LITL	67.08	KSOILS	134.00
LAKSHMIEFL	19.93	ERAINFRA	28.10	ERAINFRA	107.84
INDOSOLAR	19.48	BHAGWATHIHO	27.66	LITL	98.18
HEG	12.90	JCT	27.56	MODIRUBBER	89.25

Worst Price Performers

Worst Performers 1D	% Change	Worst Performers 1W	% Change	Worst Performers 1M	% Change
IDFC	(57.32)	BLUESTINFO	(26.38)	AEGISCHEM	(88.77)
BIRLACOT	(20.00)	AMTEKINDIA	(22.26)	AMTEKINDIA	(61.67)
TUNITEX	(18.60)	SHRENUJ	(21.58)	IDFC	(52.48)
HCLTECH	(12.65)	SURANACORP	(20.66)	VTCIND	(43.13)
CALSREF	(12.50)	CMAHENDRA	(20.22)	GOKUL	(41.55)

Top News

- **TVSMOTOR** Sept 15 Auto sales No : -7.2 % (YoY) , +2.2% (MoM) .
- TATAMOTORS Sept 15 Auto sales No : -2.2 % (YoY) , +11.1 % (MoM) .
- ASHOKLEY Sept 15 Auto sales No : +60.7 % (YoY) , +28 % (MoM) .
- HEROMOTO Sept 15 Auto sales No : +1.1 % (YoY) , +26.3 % (MoM) .
- ATUL AUTO Sept 15 Auto sales No : +3.7 % (YoY) , +10.1 % (MoM) .
- M&M Aug 15 Auto sales No : -4.6% (YoY) , +20.2% (MoM) .
- Maruti Aug 15 Auto sales No : +3.7% (YoY) , -3.5% (MoM) .

- **Cummins India** acquires remaining 50 percent shareholding in Cummins Svam Sales & Service . Cummins India Ltd has informed that the company has completed acquisition of the remaining shares and Cummins Svam Sales & Service Private Limited has become wholly-owned subsidiary of the company, effective October 1, 2015.

- **National Buildings Construction Corporation (NBCC)** said it bagged orders worth Rs 277 crore during the last month. The company has secured total business amounting Rs 276.96 crore (approx) from various clients in the month of September, 2015 . New Delhi-based NBCC is present in three main segments -- Project Management Consultancy (PMC), real estate and engineering, procurement and construction (EPC contracting).

- **Syndicate Bank** has raised Rs 1,000 crore by issuing tier-II bonds through private placement. "The bank has finalised the issue of unsecured redeemable non-convertible Basel-III complaint tier-II bonds in the nature of debentures aggregating to Rs 1,000 crore

- **SeQuent Scientific** has said its subsidiary Alivira Animal Health has completed the acquisition of animal health business of Lyka Exports. The consolidation will be effective from the third quarter of FY 16, SeQuent Scientific said in a filing to BSE. "The acquisition...includes all IPR, sales, marketing and distribution network with related employees, business contacts, assets and liabilities

- **Power Grid Corporation of India Ltd (PGCIL)** is building a transmission line between West Bengal and Bihar at a cost of Rs 800 crore that will enhance electricity supply infrastructure.

- **The government** is looking to dilute stake in IDBI Bank through strategic sale or public offering. Various options are being considered, including strategic sale and offer for sale (OFS), for dilution of the government stake in IDBI Bank, but these are at a preliminary stage

- **Adani Ports and Larsen & Toubro (L&T)** said they have inked a pact to oversee operations of Kattupalli Port in Tamil Nadu. Adani Ports (Adani) has entered into a non-binding Memorandum of Understanding with L&T Shipbuilding (L&T) for evaluating the operations of the port at Kattupalli, Tamil Nadu, with effect from October 2015 for one month

- **Indian Manufacturing Purchasing Managers' Index**, compiled by Markit, fell to 51.2 in September from 52.3 in August and against predictions of 52.0

- **U.S. Factory Orders** fell to a seasonally adjusted -1.7%, from 0.2% in the preceding month whose figure was revised down from 0.4%. Analysts had expected U.S. Factory Orders to fall to -1.2% last month.

- **U.S. Department of Labor said non-farm payrolls** rose to a seasonally adjusted 142K, from 136K in the preceding month whose figure was revised down from 173K. Analysts had expected U.S. non-farm payrolls to rise 203K last month.

- **U.S. Department of Labor said the unemployment rate remained** unchanged at a seasonally adjusted 5.1%, from 5.1% in the preceding month . Analysts had expected the U.S. unemployment rate to remain unchanged at 5.1% last month.

- **Euro zone PPI** fell to a seasonally adjusted -0.8%, from -0.1% in the preceding month. Analysts had expected Euro zone PPI to fall -0.6% last month.

- **U.K. Construction PMI** rose to a seasonally adjusted 59.9, from 57.3 in the preceding month. Analysts had expected U.K. Construction PMI to rise to 57.5 last month.

Economic Calendar

Country	Monday 5th Oct 15	Tuesday 6th Oct 15	Wednesday 7th Oct 15	Thursday 8th Oct 15	Friday 9th Oct 15
US	Final Services PMI , ISM Non-Manufacturing PMI , Labor Market Conditions Index m/m .	Trade Balance , IBD/TIPP Economic Optimism , RICS House Price Balance , BRC Shop Price Index y/y .	Crude Oil Inventories , Consumer Credit m/m .	Unemployment Claims , Natural Gas Storage , 10-y Bond Auction , FOMC Meeting Minutes .	Import Prices m/m , Wholesale Inventories m/m , Federal Budget Balance .
UK/EURO ZONE	Services PMI , Retail Sales m/m , Sentix Investor Confidence , French Final Services PMI ,	German Factory Orders m/m , Trade Balance , Housing Equity Withdrawal q/q ,	Trade Balance , IBD/TIPP Economic Optimism , RICS House Price Balance , BRC Shop Price Index y/y .	MPC Official Bank Rate Votes , Official Bank Rate , Asset Purchase Facility , MPC Asset Purchase Facility Votes , MPC Rate Statement , Monetary Policy Summary .	French Industrial Production m/m , Italian Industrial Production m/m , Construction Output m/m , Employment Change , Unemployment Rate .
INDIA	HSBC India Services PMI				

Narnolia Securities Ltd.

Narnolia Research Lab

Stellar IT Park | 5th Floor | Office Space No. 6 | Tower-II/nd Plot No. C-25 | Sector-62 | Noida
| Ph : 0120-4215110

Central Strategy Desk - Kolkata

124 | 1st Floor | 7/1 Lords Sinha Road | Kolkata - 71
Ph : 033-22821500 | M : 93347 14418, 98302 69810