

SGX NIFTY : 8850 ( 11 Pt Up)

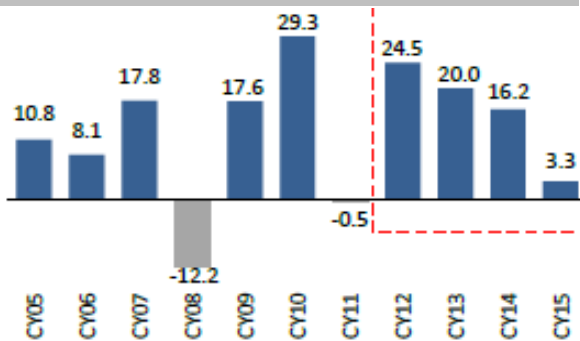
### Quote of the Day

"The line separating investment and speculation, which is never bright and clear, becomes blurred still further when most market participants have recently enjoyed triumphs. Nothing sedates rationality like large doses of effortless money."

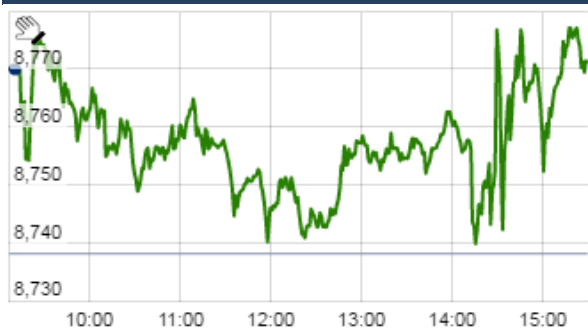
Warren Buffett

### Chart of the Day

FII Investment Trend



### Index Action Nifty ( 4th Oct 16 )



### Index

Contents	Page	Coverage
News	2	Update
Economic Calendar	3	Update

### Market

Name	Value	Change
Sensex	28,334.55	91.26
Nifty	8769.15	31.05
DOW	18,538.12	46.16
NASDAQ	5,289.66	(11.21)
CAC	4,503.09	49.53
DAX	10,619.61	108.59
FTSE	7,074.34	90.82
NIKKIE	16,830.22	94.57
HANG SENG	23,788.86	99.42
EW ALL SHARE	15735.57	84.97

### Instituional Turnover

#### FII

Investor	Buy(Cr.)	Sale(Cr.)	Net(Cr.)
4-Oct-16	3745.10	3710.88	34.22
Oct,16	8524.25	8145.90	378.35
2016	796992.47	771761.23	25231.24

#### DII

Investor	Buy(Cr.)	Sale(Cr.)	Net(Cr.)
4-Oct-16	2479.59	2281.57	198.02
Oct,16	4795.07	4769.28	25.79
2016	339940.42	340774.47	(834.05)

### Commodity Price

Commodity/Currencies	Value	
GOLD	30047.00	↓
SILVER	42881.00	↓
CRUDEOIL	47.60	↑
COPPER	322.20	↓
NATURALGAS	195.10	↑
DOLLAR/RS.	66.46	↓
EURO/RS.	74.74	↑
POUND/RS.	84.83	↑

## Market Snapshot

### Top Price Performers

Top Performers 1D	% Change	Top Performers 1W	% Change	Top Performers 1M	% Change
LOTUSEYE	20.00	NEOCORP	54.91	GTLINFRA	130.38
GENESYS	19.95	BOROGLASS	49.84	RAINBOWPAP	113.30
AARVEEDEN	19.95	SWANENERGY	45.48	NEOCORP	102.62
SWANENERGY	19.95	SATINDLTD	45.30	GTL	89.44
SATINDLTD	18.71	VHL	39.84	FACORALL	87.63

Worst Performers 1D	% Change	Worst Performers 1W	% Change	Worst Performers 1M	% Change
USHERAGRO	(7.78)	ENTEGRA	(17.88)	MANDHANA	(74.07)
SURYACHAKRA	(7.40)	ACROPETAL	(17.39)	ROLATAN	(43.80)
NAKODATEX	(6.25)	USHERAGRO	(17.05)	HINDUJAFO	(39.17)
SURANAIND	(5.88)	ORCHIDCHEM	(15.16)	YBRANTDIGI	(36.64)
BFLYGANDHI	(5.75)	SRSREAL	(12.52)	ACROPETAL	(36.40)

## Top News

- **Majesco Mgt Guideline** : Majesco has announced a 5-year partnership with IBM . The joint IBM and Majesco offering is going to provide a secured global incubator for insurance companies to rapidly develop and launch cognitive products and services on the cloud for its clients . Company has got a good kind of presence in the North America market with the insurance services in the property and casualty (P&C) side and the life side, what IBM will contribute is the IBM Watson analytics and other cognitive capabilities, which will run as a services on IBM cloud for insurance companies and Majesco will offer its core insurance solutions in the P&C and life insurance segment.

- **Everest Kanto Cylinders** is looking to reduce over half of its debt by the end of the fiscal. The company is hopeful of paring by 60 percent of Rs 240-crore debt by FY17 . The company expects to complete sale of its land assets by April-March next year, he said adding that the only a part of the proceeds of the sale will go in to debt reduction.

- **Escorts Mgt Guideline** : While the strong sales number posted by Escorts in September was largely due to pre-festival exuberance, industry growth also has been fairly good for the last 5-6 months . Company expects average growth rate of roughly 15-16 percent for the company. Margins also will remain firm with both tractors and railway equipment businesses' performance aiding growth . Although no significant increase has been seen so far, market share is inching up for the company.

- **Alps Industries** : Enters into one-time settlement with Standard Chartered Bank Settled outstanding of Rs 20.40 crore for Rs 2.68 crore payable in monthly installment till December 2017

- **Jagran Prakashan** Allahabad HC approved amalgamation of Crystal Sound & Music and Spectrum Broadcast Holdings with itself and demerger of radio business of Shri Puran Multimedia into Music Broadcast

- **Jubilant Lifesciences** India Ratings & Research assigns long term rating of IND AA- and short term rating of IND A1+

- **IOC** plans to invest Rs 18000 crore to raise capacity of its Panipat refinery in Haryana to 25 million tonnes (mt) by 2020 . IOC had previously planned to raise capacity of Panipat refinery from 15 mt to 20.2 mt, but now it is looking at raising the capacity straightway to 25 mt. the company board will shortly take up investment approval for the Panipat expansion as well as that of capacity upgrade at Koyali refinery in Gujarat and Mathura unit in Uttar Pradesh.

- **Aurobindo Pharma** has received tentative approval from the US Food and Drug Administration (USFDA) for Abacavir/Lamivudine. Abacavir/Lamivudine is a combination drug used for the treatment of HIV infection. The USFDA also approved chemotherapy drug Azacitidine - injection ANDA manufactured by Shilpa Medicare in its SEZ formulations facility in Jadcherla, Hyderabad.

- **Australian retail sales** rose to a seasonally adjusted 0.4%, from 0.0% in the preceding month. Analysts had expected Australian retail sales to rise 0.2% last month.

- **Taiwanese CPI** fell to a seasonally adjusted annual rate of 0.33%, from 0.57% in the preceding quarter. Analysts had expected Taiwanese CPI to rise to 0.60% in the last quarter.

- **South Korean CPI** rose to a seasonally adjusted annual rate of 1.2%, from 0.4% in the preceding month. Analysts had expected South Korean CPI to rise to 0.8% last month.

- **TechnoMetrica Institute of Policy and Politics (TIPP)** said that IBD/TIPP Economic Optimism rose to a seasonally adjusted annual rate of 49.6, from 46.7 in the preceding month. Analysts had expected IBD/TIPP Economic Optimism to rise 47.5 last month.

**Economic Calendar**

Country	Monday 3th Oct 16	Tuesday 4th Oct 16	Wednesday 5th Oct 16	Thursday 6th Oct 16	Friday 7th Oct 16
<b>US</b>	ISM Manufacturing PMI , Final Manufacturing PMI , Construction Spending m/m , ISM Manufacturing Prices , Total Vehicle Sales .	IBD/TIPP Economic Optimism.	ADP Non-Farm Employment Change , Trade Balance , ISM Non-Manufacturing PMI , Factory Orders m/m , Crude Oil Inventories .	Unemployment Claims , Natural Gas Storage , Treasury Currency Report .	Average Hourly Earnings m/m ,Non-Farm Employment Change , Unemployment Rate , Wholesale Inventories m/m.
<b>UK/EURO ZONE</b>	Italian Manufacturing PMI , French Final Manufacturing PMI , German Final Manufacturing PMI , Final Manufacturing PMI , Spanish Manufacturing PMI.	Spanish Unemployment Change ,Construction PMI , PPI m/m.	Manufacturing Production m/m , Services PMI , Industrial Production m/m , Retail Sales m/m , Spanish Services PMI , Italian Services PMI , French Final Services PMI , German Final Services PMI .	German Factory Orders m/m , ECB Monetary Policy Meeting Accounts , French Gov Budget Balance , French Trade Balance.	German Industrial Production m/m ,Halifax HPI m/m , Goods Trade Balance , Italian Industrial Production m/m
<b>INDIA</b>					

**Risk Disclosure & Disclaimer :** This report/message is for the personal information of the authorized recipient and does not construe to be any investment, legal or taxation advice to you. Narnolia Securities Ltd. (Hereinafter referred as NSL) is not soliciting any action based upon it. This report/message is not for public distribution and has been furnished to you solely for your information and should not be reproduced or redistributed to any other person in any form. The report/message is based upon publicly available information, findings of our research wing "East wind" & information that we consider reliable, but we do not represent that it is accurate or complete and we do not provide any express or implied warranty of any kind, and also these are subject to change without notice. The recipients of this report should rely on their own investigations, should use their own judgment for taking any investment decisions keeping in mind that past performance is not necessarily a guide to future performance & that the the value of any investment or income are subject to market and other risks. Further it will be safe to assume that NSL and /or its Group or associate Companies, their Directors, affiliates and/or employees may have interests/ positions, financial or otherwise, individually or otherwise in the recommended/mentioned securities/mutual funds/ model funds and other investment products which may be added or disposed including & other mentioned in this report/message. NSL or any of its affiliates or employees shall not be in any way responsible for any loss or damage that may arise to any person from any action taken based on the above information or inadvertent error in the information contained in this report/message.



(Regn. No. : INP 000004011)

---

## **Narnolia Securities Ltd.**

### **Narnolia Research Lab**

Stellar IT Park | 5th Floor | Office Space No. 6 | Tower-IIInd Plot  
No. C-25 | Sector-62 | Noida | Ph : 0120-4215110

### **Central Strategy Desk - Kolkata**

201 | 2nd Floor | Marble Arch Building | 236B-AJC Bose Road  
Kolkata-700 020 , Ph : 033-40501500 |  
Email : [research@narnolia.com](mailto:research@narnolia.com) | [www.narnolia.com](http://www.narnolia.com)