

SGX NIFTY : 7803.50 (25 Pt Up)

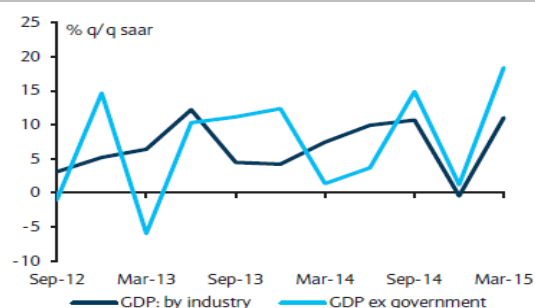
Quote of the Day

"The primary test of managerial economic performance is the achievement of a high earnings rate on equity capital employed (without undue leverage, accounting gimmickry, etc.) and not the achievement of consistent gains in earnings per share."

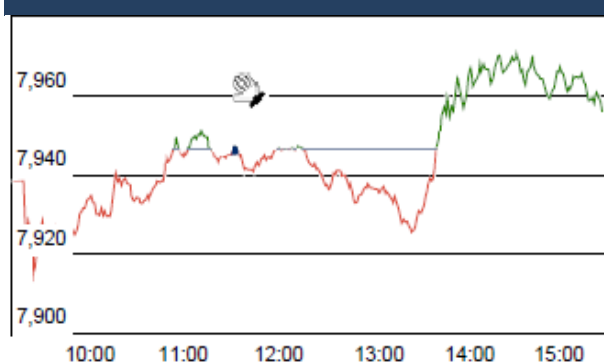
Warren Buffett

Chart of the Day

GDP Trend



Index Action Nifty (5th Jan 16)



Index

Contents	Page	Coverage
News	2	Update
Economic Calendar	3	Update

Market

Name	Value	Change
Sensex	25,580.34	(43.01)
Nifty	7784.65	(6.65)
DOW	17,090.25	(58.83)
NASDAQ	4,891.43	-11.66
CAC	4,537.63	15.18
DAX	10,310.10	26.66
FTSE	6,137.24	43.81
NIKKEI	18,273.82	(100.18)
HANG SENG	21,128.31	(60.41)
EW ALL SHARE	13923.45	(37.59)

Instituional Turnover

FII

Investor	Buy(Cr.)	Sale(Cr.)	Net(Cr.)
05-Jan-16	3361.38	3713.80	(352.42)
Jan,16	5999.22	6790.68	(791.46)
2016	5999.22	6790.68	(791.46)

DII

Investor	Buy(Cr.)	Sale(Cr.)	Net(Cr.)
05-Jan-16	1631.28	1618.09	13.19
Jan,16	3198.00	3347.29	(149.29)
2016	3198.00	3347.29	(149.29)

Commodity Price

Commodity/Currencies	Value	
GOLD	25385.00	↓
SILVER	33651.00	↑
CRUDEOIL	36.08	↓
COPPER	316.20	↑
NATURALGAS	151.70	↓
DOLLAR/RS.	66.59	↓
EURO/RS.	71.66	↑
POUND/RS.	97.69	↑

Market Snapshot

Top Price Performers

Top Performers 1D	% Change	Top Performers 1W	% Change	Top Performers 1M	% Change
SURANAIND	20.00	MEGASOFT	62.27	EKC	139.50
DOLATINVES	20.00	DOLATINVES	61.19	DOLATINVES	128.57
BLBLIMITED	20.00	SUDAR	60.38	INFOMEDIA	110.45
SURYAROSNI	20.00	BSELINFRA	57.26	EUROCERA	100.90
IKFTECH	20.00	ROHLTD	56.10	SPENTEX	99.50

Worst Performers 1D	% Change	Worst Performers 1W	% Change	Worst Performers 1M	% Change
HOCL	(5.52)	CADILAHC	(18.99)	SHRENUJ	(50.19)
MANJEERA	(5.00)	HCIL	(13.03)	OUTCTYTRVL	(33.20)
PARACABLES	(4.99)	SANCIA	(12.77)	AMTEKINDIA	(29.23)
EUROCERA	(4.99)	SURAJLTD	(11.78)	SANWARIA	(28.72)
MODIRUBBER	(4.93)	PIRLIFE	(10.63)	TREEHOUSE	(23.89)

Top News

- PNC Infratech** has sold the entire 8.5 percent stake in Jaora-Nayagaon toll road to Viva Highways. The deal has been closed at Rs 34.2 crore, which is 1.4 times the investment made (Rs 24.42 crore) in 2011. PNC's total order book stands at Rs 4,000 crore and Jain expects around Rs 1,500 crore of order book this quarter. "We are expecting topline growth around Rs 1,900-2,000 crore; our turnover is around 20-25 percent growth
- TCS** has joined the bidding process for Perot Systems, an IT management business of Dell Inc. Metal and mining stocks edged higher as copper prices rose in global commodities markets. JSW Steel moved higher after the company announced that the Karnataka high court on 3 December 2015 provided a partial relief on the payment of Forest Development Tax (FDT) while hearing a petition filed by mine owners and the purchasers of iron ore, including JSW Steel on the levy of FDT by the Karnataka state government.
- JSW Steel** announced that the Karnataka high court on 3 December 2015 provided a partial relief on the payment of Forest Development Tax (FDT) while hearing a petition filed by mine owners and the purchasers of iron ore, including JSW Steel on the levy of FDT by the Karnataka state government. The parties are entitled to appeal to the high court within the stipulated period of 90 days. JSW Steel said that the company is closely monitoring the developments in this regard.
- Symphony** has successfully acquired 100% equity share capital of Munters Keruilai Air Treatment Equipment (Guangdong) Co. Ltd. from Munters AB according to Equity Transfer Agreement. The Company has received Certificate of Approval for establishment of enterprises with foreign investment in the People's Republic of China endorsing name of the Company as Investors from the Chinese Authority.
- BHEL** has commissioned a 600 MW unit at Kakatiya Thermal Power Project, Telangana. The unit, commissioned at Kakatiya Thermal Power Project (KTPP) at Chelpur in Warangal District of Telangana, is the highest rating unit in the state
- Supreme Court** imposed a ban on registration of new diesel sport utility vehicles (SUVs) and private cars in Delhi with an engine capacity of over 2000cc until 31 March 2016, to rein in the alarming pollution levels in the capital city. The Supreme Court had simultaneously ruled that taxis plying in Delhi will have to be converted into compressed natural gas (CNG) by 1 March 2016.
- BNP Paribas** has acquired 5 percent stake in the SREI Infrastructure Finance, adding that the deal will be value accretive to the shareholders.
- Eurostat said consumer price inflation** increased by a seasonally adjusted 0.2% last month, missing expectations for a gain of 0.3% and following a 0.2% increase in November.
- Canada's Raw Material Price Index** fell to -4.0%, from 0.4% in the preceding month. Analysts had expected Canada's Raw Material Price Index to fall -3.0% last month.
- U.K. construction purchasing managers' index** rose to a seasonally adjusted 57.8 last month from a reading of 55.3 in November, which was a seven-month low. Economists had expected the index to improve to 56.0 in December.
- Spain's Employment Ministry said the number of unemployed** people decreased by a seasonally adjusted 55,800 last month, better than expectations for a decline of 52,600. The number of unemployed people declined by 27,100 in November.
- Italian CPI** remained unchanged at 0.0%, from -0.4% in the preceding month. Analysts had expected Italian CPI to rise 0.1% last month.

Economic Calendar

Country	Monday Jan 16	Tuesday 5th Jan 16	Wednesday 6th Jan 16	Thursday 7th Jan 16	Friday 8th Jan 16
US	ISM Manufacturing PMI , Construction Spending m/m .	Total Vehicle Sales .	ADP Non-Farm Employment Change ,Trade Balance , ISM Non-Manufacturing PMI , FOMC Meeting Minutes .	Unemployment Claims.	Unemployment Rate , Non-Farm Employment Change , Unemployment Rate .
UK/EURO ZONE	et Lending to Individuals m/m , Manufacturing PMI , Spanish Manufacturing PMI .	Spanish Unemployment Change , Construction PMI ,	Services PMI , German Final Services PMI , Halifax HPI m/m .	Unemployment Rate, German Retail Sales m/m, German Factory Orders m/m,	Trade Balance .
INDIA	Auto No		HSBC Service PMI No .		

Narnolia Securities Ltd.

Narnolia Research Lab

Stellar IT Park | 5th Floor | Office Space No. 6 | Tower-IIInd Plot No. C-25 | Sector-62 | Noida | Ph
: 0120-4215110

Central Strategy Desk - Kolkata

124 | 1st Floor | 7/1 Lords Sinha Road | Kolkata - 71
Ph : 033-22821500 | M : 93347 14418, 98302 69810