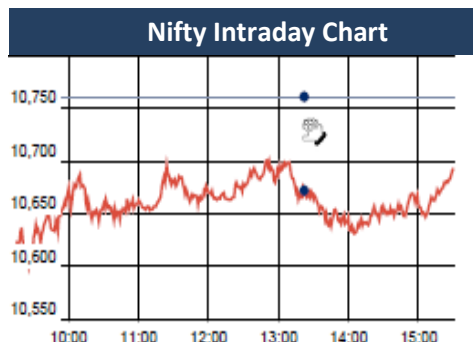


### KEY LEVELS

Support 1 : 10880  
Support 1 : 10782

Resistance 1 : 11130  
Resistance 2 : 11268



### Market Outlook

After giving a gap down opening, Nifty traded in the negative territory throughout the day on Monday and closed the day at 10666.55. It had a net loss of 0.87% over the previous trading day's close. The midcap and small cap indices out-performed the benchmark index and the small cap index closed after gaining 0.76%.

On the sectoral front, Banking and Financial services stocks were the main catalysts to drag the market lower while Auto, FMCG and Pharmaceutical indices closed in green. The breadth of the market was negative and about three shares declined for two shares advanced at NSE.

Budget 2018 was expected to be more populist due to this being last full budget before the next general election, but the budget is much more balanced. For economy, the rise of 20% in infra spending and attempt to raise farm income is highly positive. We believe equity market in the calendar year 2018 would be more about earning growths than anything else. On-going Q3 quarter results are unfolding almost in-line with the street expectations. And double-digit growth for Nifty EPS in FY18 is almost secured.

Though there does not yet appear any threat to this on-going rally in terms of market technicals, it's worth to remember that stock market can never be a one-way street. So it would be prudent to continue trading long but with trailing stop loss. If Nifty retests lows made post-budget that would signal a correction has finally set in after the relentless rally of last 14 months.

**Quote of the Day** : "The book value deserves at least a fleeting glance by the public before it buys or sells shares in a business undertaking. In any particular case the message that the book value conveys may well prove to be inconsequential and unworthy of attention. But this testimony should be examined before it is rejected." **Benjamin Graham**

### Market

Market	Value	% Change
<b>Morning Traded Market</b>		
SGX NIFTY	10,385.50	-3.04%
NIKKIE	21,524.40	-5.38%
HANG SENG	31,216.12	-3.30%
<b>Yesterday Closing Market</b>		
Sensex	34,757.16	-0.88%
Nifty	10,666.55	-0.87%
DOW	24,345.75	-4.60%
NASDAQ	6,967.53	-3.92%
CAC	5,285.83	-1.50%
DAX	12,687.49	-0.77%
FTSE	7,334.98	-1.48%
EW ALL SHARE	19,524.00	-0.37%

% Change in 1 day

### Commodity Price ( Yesterday Closing )

Commodity/Currencies	Value	% Change
GOLD	30293.00	-0.14%
SILVER	38553.00	-0.25%
CRUDEOIL	66.94	-0.13%
NATURALGAS	177.10	-4.22%
DOLLAR/RS.	64.06	0.01%
EURO/RS.	79.83	-0.27%
POUND/RS.	90.33	-0.89%

% Change in 1 day

### Institutional Turnover

FII			
Investor	Buy(Cr.)	Sale(Cr.)	Net(Cr.)
05-Feb-18	5806	7069	(1264)
Feb-18	21422	20635	786
2018	155644	145289	10354
DII			
Investor	Buy(Cr.)	Sale(Cr.)	Net(Cr.)
05-Feb-18	4890	3726	1164
Feb-18	14837	14541	296
2018	107866	107171	695

### Event Today Interim Dividend

CONCOR : Rs 9.6/-

GODREJCP : Rs 1/-

SUVEN : Rs 1.5/-

VIPIND : Rs 1/-

( Ex Date : 6. 2.2018)

### Result

ADVENZYMES, AIAENG , APOLLOTYRE  
BERGEPAIN , BIRLACABLE  
BLUESTARCO, CASTROLIND, CLARIS  
DELTA, DISHTV , EIMCOLECO  
GAMMONIND, GMM, GUJALKALI  
HERITGFOOD, HEROMOTOCO  
JK AGRI , JSWENERGY, KEC  
KPRMILL, LGBFORGE, MAHABANK  
MONSANTO , NATCOPHARM  
NOIDATOLL, PNB, PRAJIND , RAMCO  
SIEMENS, SHANTIGEAR, THERMAX  
TNPETRO, VTL

### Concall

SFL, NEW India Assurance : 10:0 AM  
Cochin Shipyard : 10:00 AM,  
Skipper Ltd , ENIL, PI Inds: 3:00 PM  
Century Ply : 3:30 PM, Lupin : 4PM  
JK Cement , Kellton Tech : 4:00 PM  
AIA Engg , Advanced Enzyme : 4:30 PM  
KEC Intl , Dish TV : 5:00 PM  
JSW Energy , Hero Motors : 5:30 PM

**BAJAJ-AUTO****"ACCUMULATE"****6th Feb 2018**

Bajaj Auto posted a decent quarterly result in 3QFY18. Revenue grew by 25.7%YoY to Rs.6369 crores owing to 18% YoY volume growth and 7%YoY realization growth. EBITDA Margin for the quarter declined by 127bps majorly because of higher sales in the domestic motorcycle segment and Rs.28 crores of CSR expenditure during the quarter. The company posted 4% YoY growth in PAT to Rs.1014 crore. Lower other income by approx Rs.80 crores due to MTM loss restricted the further increase in PAT. We expect the company to maintain its ROE over 23% in FY19. Considering management's aggressive strategy to gain 25% market share, healthy dividend payout and improving fundamentals we are positive on Bajaj Auto. We value Bajaj Auto at 18.9x FY19E expected EPS and recommend ACCUMULATE with the target price of Rs.3450

**ASHOKLEY****"ACCUMULATE"****5th Feb 2018**

Ashok Leyland continued its sturdy performance in 3QFY18 with 61%YoY growth in revenue. The company posted healthy volume growth of 42%YoY to 46627 units. Going forward the company is all set to deliver a healthy growth in M&HCV segment on account of strong order book from various state transport corporations, the spurt in ongoing infra & mining segment demand scenario, implementation of mandatory scrappage policy and robust growth potential in the defense business. The company's plan to launch one new product every quarter to expand its LCV portfolio and gain 30% market share in next 2-3 years is going as per schedule. Based on the strong demand outlook, we expect Revenue and PAT to grow at CAGR of 20% and 22% respectively, in FY17-19E. We expect a healthy ROE of over 21.9% in FY19. We value it at 21x FY19E EPS and recommend ACCUMULATE rating on Ashok Leyland with the target price of Rs.134

\*For details, refer to our daily report- *India Equity Analytics***Top News****BAJAJ-AUTO concall:**

- # Exports target for FY18 is 1.65 units and 10% growth for FY19
- # CV 3.5 lakh units in FY18 and 5% growth for FY19
- # Domestic motorcycles average runrate for 200000 units for next 2 quarters.
- # New Discover has potential to do 75000 units per month; but if it touches 45000 units by March or April then it can touch 75000 units going ahead.
- # The management expects that the cost pressure on steel side will be there but it can be passed on.
- # The management expects 20-21% kind of margin is sustainable.
- # Capex guidance of Rs 250-300 crores every year
- # Nigeria volumes are back on track and doing around 33000 units per month from earlier 12000-15000 units. The growth guidance is 10-15% for next 1-2 years.
- # On the 3Ws side volumes to be around 30000 units per month.
- # The company has around 645 main dealers and 3000 touch points. By June it may reach 700 dealer and 3300 touch points.

**Aegis Logistics Concall update:**

- Kandla 83,000 KL Liquid terminal has commissioned in Q3, and rest of 17,000 KL will be commissioned in next month.
- Management expects bigger revenue from Kandla terminal to be reflected from Q4 FY18.
- Haldia liquid terminal has contributed significantly in Q3 volumes and is expected to contribute majorly in Q4. Both HPCL and BPCL are has strong uptake in Haldia.
- Mumbai and Pipavav ports are at full capacity utilization.
- New tenders for sourcing volume are at the advance stage, it may take few more months.
- Management refrains from giving any capacity utilization at new terminals.

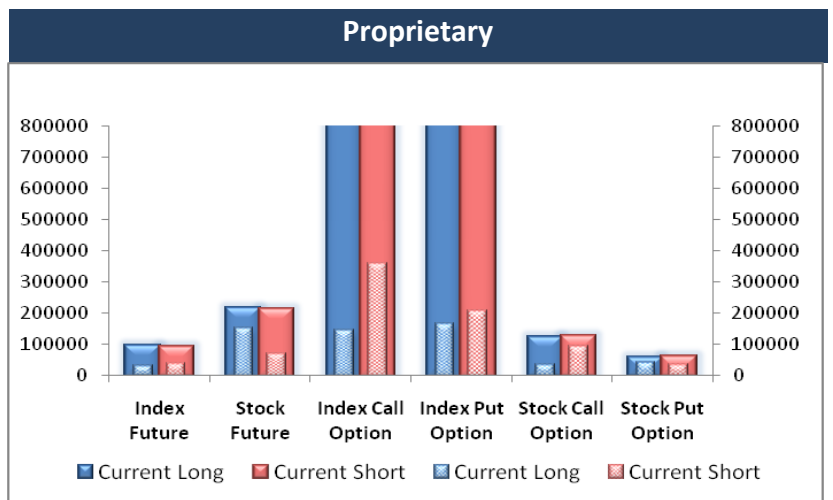
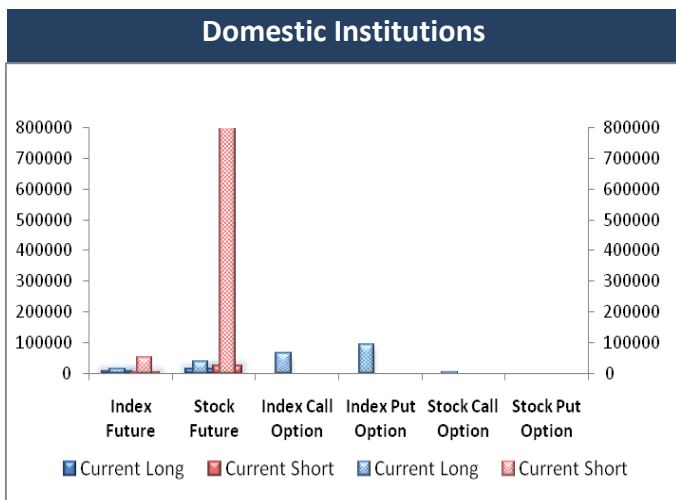
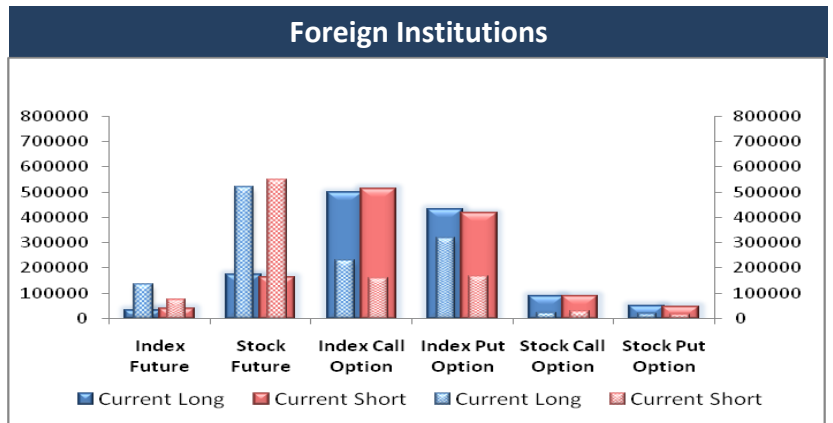
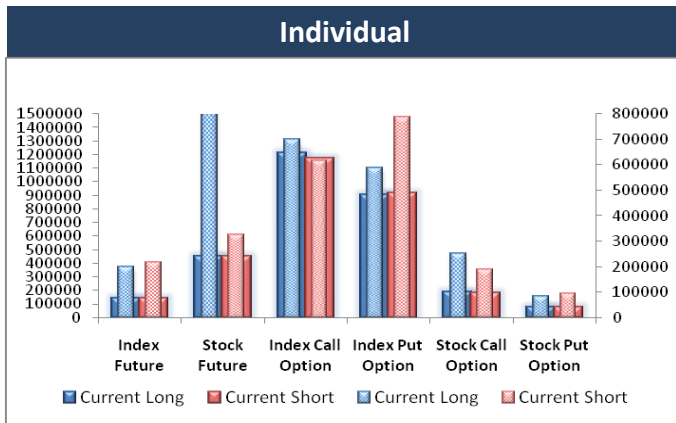
**Hindalco 3QFY18 Concall highlights:**

- >> EBITDA increase driven by stable operation & favourable commodity prices in both business (Aluminium & Copper).
- >> Prepayment of loan and repricing of loans led to reduction in interest expense by Rs.100 crore.
- >> Average cost of long term borrowing reduced from 9.25 % in 3QFY17 to 8.76% in 3QFY18.
- >> Provision of Rs.115 crore based on Supreme Court judgment on mining regulation.
- >> Aluminium business took headwinds by oversupply domestic market and surge in input cost such as caustic soda and carbon.
- >> Increase in notified price of coal by 11% effective from Jan 18 will have as impact in coming quarters.
- >> Copper business benefited due to higher volume, Sulfuric acid prices.
- >> Lower Tc/Rc & lower DAP volume impacted copper volume.
- >> Novelis- Sign of improvement in can demand in Asia & South America.
- >> Novelis acquired operating business in Switzerland worth Euro 200 million.
- >> DAP Production impacted because of operational issues and is expected to ramp up in 1QFY19.
- >> Increase in volumes of novelis led by 12% increase in automotive shipments.
- >> Company aims to double downstream (VAP) business by next 5 years. Expected 40-50 KT increase in VAP in FY19.
- >> 1.5 to 2 million ton Alumina refinery Brownfield expansion at capex of Rs.1300 crore on line.
- >> Alumina cost of production increased by Rs.1000 from 2Q to 3QFY18 led by increase in caustic soda prices and transportation issues.
- >> Capex for FY19 expected to be around Rs.1600 crore to Rs.1700 crore led by Utkal expansion and downstream expansion.

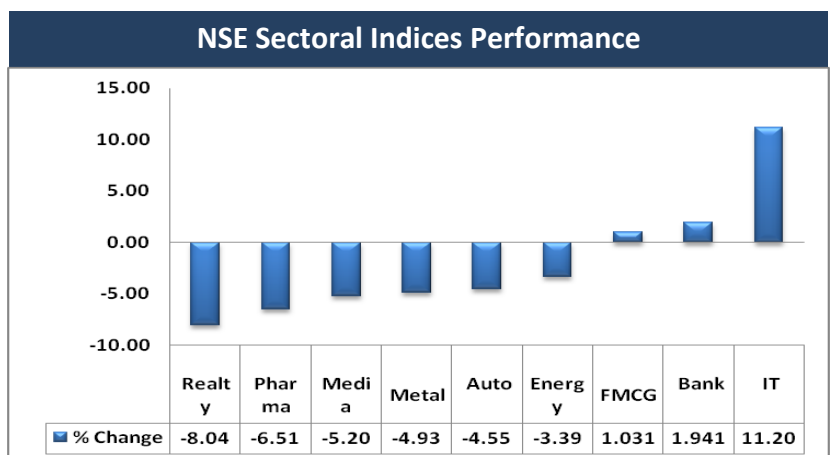
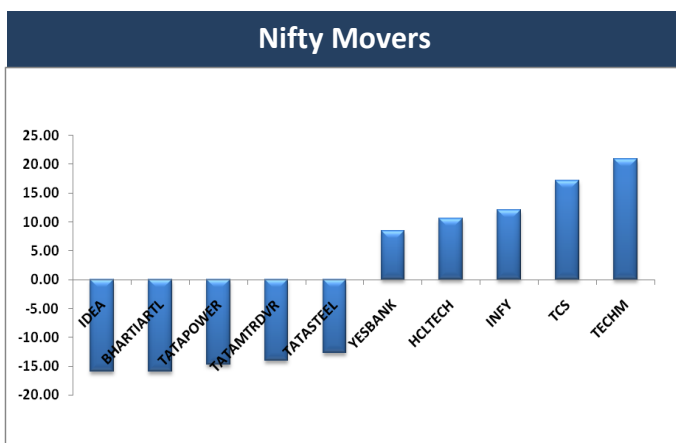
### Block Deal

Exchange	Deal Date	Company	Client Name	Deal Type	Quantity	Price
NSE	05-Feb-18	BOMDYEING	SKA SECURITIES AND FINANCIAL SERVICES PVT LTD .	BUY	1285839	223
NSE	05-Feb-18	BOMDYEING	SOCIETE GENERALE	BUY	1268709	216
NSE	05-Feb-18	JHS	NIKHIL VORA	BUY	1500000	62
NSE	05-Feb-18	JUSTDIAL	CROSSLAND TRADING CO	BUY	359742	438
NSE	05-Feb-18	JUSTDIAL	QE SECURITIES	BUY	385555	438
NSE	05-Feb-18	MANAKSIA	MITTU AGARWAL	BUY	687265	63
NSE	05-Feb-18	MANAKSIA	SUMITRA DEVI AGARWAL	BUY	690000	63
NSE	05-Feb-18	PCJEWELLER	ALPHAGREP COMMODITIES PRIVATE LIMITED	BUY	2003615	427
NSE	05-Feb-18	PCJEWELLER	CROSSLAND TRADING CO	BUY	2147952	425
NSE	05-Feb-18	PCJEWELLER	LITY INVESTMENT TRUST FIDELITY EMERGING MARKETS F	BUY	4089175	436
NSE	05-Feb-18	PCJEWELLER	WAY2WEALTH SECURITIES P LTD	BUY	2190430	423
NSE	05-Feb-18	RELIGARE	ASHOK KUMAR GUPTA	BUY	1097461	38
NSE	05-Feb-18	SPIC	MINAL PATEL	BUY	1025000	37
NSE	05-Feb-18	BHUSANSTL	EARC TRUST SC 283	SELL	4679854	42
NSE	05-Feb-18	BOMDYEING	SKA SECURITIES AND FINANCIAL SERVICES PVT LTD .	SELL	1285839	221
NSE	05-Feb-18	JHS	CHAITALI N VORA	SELL	1500000	62
NSE	05-Feb-18	JUSTDIAL	CROSSLAND TRADING CO	SELL	359742	439
NSE	05-Feb-18	JUSTDIAL	QE SECURITIES	SELL	385294	439
NSE	05-Feb-18	MANAKSIA	SUBHAM CAPITAL PVT. LTD.	SELL	1377265	63
NSE	05-Feb-18	PCJEWELLER	ALPHAGREP COMMODITIES PRIVATE LIMITED	SELL	2003615	427
NSE	05-Feb-18	PCJEWELLER	CROSSLAND TRADING CO	SELL	2147932	426
NSE	05-Feb-18	PCJEWELLER	WAY2WEALTH SECURITIES P LTD	SELL	2190430	423
NSE	05-Feb-18	RELIGARE	ASHOK KUMAR GUPTA	SELL	1097461	40
NSE	05-Feb-18	RELIGARE	IDBI TRUSTEESHIP SERVICES LTD	SELL	1000000	37
NSE	05-Feb-18	STEELXIND	LOPA SAUMIL BHAVNAGARI	SELL	486084	30

**F&O OPEN INTEREST ( Number of Contracts )**



**MARKET MOVERS (1 MONTH CHANGE)**



### Result Calendar Q3FY18

Bse Code	Company Name	Date	Bse Code	Company Name	Date
532682	ABGSHIP	6-Feb-18	531314	INTCAPM	6-Feb-18
538935	ABHIFIN	6-Feb-18	536868	INTELSOFT	6-Feb-18
540025	ADVENZYMES	6-Feb-18	530519	INTERFAC	6-Feb-18
532774	AFL	6-Feb-18	505737	INTLCOMBQ	6-Feb-18
532683	AIAENG	6-Feb-18	538422	JACKSON	6-Feb-18
535467	AIFL	6-Feb-18	507981	JINDHOT	6-Feb-18
532633	ALLSEC	6-Feb-18	530049	JJEXPO	6-Feb-18
531681	AMARDEE	6-Feb-18	523062	JFINCOR	6-Feb-18
531991	AMRAAGRI	6-Feb-18	536493	JK AGRI	6-Feb-18
523537	APMIN	6-Feb-18	533148	JSWENERGY	6-Feb-18
500877	APOLLOTYRE	6-Feb-18	526668	KAMATHOTEL	6-Feb-18
531847	ASTAR	6-Feb-18	590130	KANCOTEA	6-Feb-18
512195	BENTCOM	6-Feb-18	506938	KAPPH	6-Feb-18
509480	BERGEPAIN	6-Feb-18	532714	KEC	6-Feb-18
539662	BFLAFL	6-Feb-18	519602	KELLONTEC	6-Feb-18
535620	BINNYMILLS	6-Feb-18	505890	KENNAMET	6-Feb-18
500060	BIRLACABLE	6-Feb-18	535730	KHOBSURAT	6-Feb-18
500067	BLUESTARCO	6-Feb-18	511138	KOTHARIFIN	6-Feb-18
539304	CANOPYFIN	6-Feb-18	532889	KPRMILL	6-Feb-18
500870	CASTROLIND	6-Feb-18	533007	LGBFORGE	6-Feb-18
500280	CENTENKA	6-Feb-18	539992	LLOYDSTEEL	6-Feb-18
530191	CHROMATIC	6-Feb-18	533012	LPDC	6-Feb-18
533288	CLARIS	6-Feb-18	500257	LUPIN	6-Feb-18
530843	CUPID	6-Feb-18	540650	MAGADHSUGAR	6-Feb-18
539596	DELTA	6-Feb-18	532525	MAHABANK	6-Feb-18
500089	DICIND	6-Feb-18	524084	MONSANTO	6-Feb-18
506414	DIL	6-Feb-18	511549	MORARKFI	6-Feb-18
532839	DISHTV	6-Feb-18	524816	NATCOPHARM	6-Feb-18
523708	EIMCOELECO	6-Feb-18	504112	NELCO	6-Feb-18
511716	ESCORTSFIN	6-Feb-18	531272	NIKKIGL	6-Feb-18
523672	FLEXFO	6-Feb-18	500307	NIRLON	6-Feb-18
540064	FRETAIL	6-Feb-18	532481	NOIDATOLL	6-Feb-18
509550	GAMMONIND	6-Feb-18	532466	OFSS	6-Feb-18
513108	GANDHITUBE	6-Feb-18	511644	OMEGAIN	6-Feb-18
512443	GANONTR	6-Feb-18	540648	PALASHSEC	6-Feb-18
532764	GEECEE	6-Feb-18	532911	PARLESOFT	6-Feb-18
530263	GLOBALCA	6-Feb-18	500327	PILITA	6-Feb-18
505255	GMM	6-Feb-18	532461	PNB	6-Feb-18
509024	GOLDLEG	6-Feb-18	524210	PNTKYOR	6-Feb-18
538979	GRNLAMIND	6-Feb-18	532626	PONDYOXIDE	6-Feb-18
500160	GTL	6-Feb-18	522205	PRAJIND	6-Feb-18
530001	GUJALKALI	6-Feb-18	526801	PSL	6-Feb-18
538567	GULFOILLUB	6-Feb-18	531562	PUSHPIN	6-Feb-18
519552	HERITGFOOD	6-Feb-18	539814	RADHEY	6-Feb-18
500182	HEROMOTOCO	6-Feb-18	500260	RAMCOCEM	6-Feb-18
526683	HOTELRUGBY	6-Feb-18	532369	RAMCOIND	6-Feb-18

532955	RECLTD	6-Feb-18	533095	BENGALASM	7-Feb-18
531539	RISHDIGA	6-Feb-18	532930	BGREENERGY	7-Feb-18
503635	SALSAIN	6-Feb-18	524370	BODALCHEM	7-Feb-18
539252	SCFL	6-Feb-18	531458	BOSTONBIO	7-Feb-18
524727	SDL	6-Feb-18	524742	CAPPL	7-Feb-18
509423	SEL	6-Feb-18	532807	CINELINE	7-Feb-18
512297	SHANTAI	6-Feb-18	500087	CIPLA	7-Feb-18
522034	SHANTIGEAR	6-Feb-18	513353	COCHINM	7-Feb-18
530797	SHGANEL	6-Feb-18	523100	COSMOFE	7-Feb-18
500550	SIEMENS	6-Feb-18	532210	CUB	7-Feb-18
519566	SIMRAN	6-Feb-18	533309	DALMIABHA	7-Feb-18
538562	SKIPPER	6-Feb-18	539770	DARJEELING	7-Feb-18
532143	SKMEGGPROD	6-Feb-18	531270	DAZZEL	7-Feb-18
539010	SMADL	6-Feb-18	540699	DIXON	7-Feb-18
505827	SNL	6-Feb-18	505200	EICHERMOT	7-Feb-18
500285	SPICEJET	6-Feb-18	500125	EIDPARRY	7-Feb-18
540575	STARCEMENT	6-Feb-18	505700	ELECON	7-Feb-18
507785	TAINWALCHM	6-Feb-18	522027	EMAINDIA	7-Feb-18
533170	TAMBOLI	6-Feb-18	533161	EMMBI	7-Feb-18
505685	TAPARIA	6-Feb-18	500133	ESABINDIA	7-Feb-18
519091	TASTYBIT	6-Feb-18	500650	EXCELINDUS	7-Feb-18
500770	TATACHEM	6-Feb-18	531599	FDC	7-Feb-18
500411	THERMAX	6-Feb-18	500142	FGP	7-Feb-18
500777	TNPETRO	6-Feb-18	507910	FIBERWEB	7-Feb-18
512117	TWIROST	6-Feb-18	505744	FMGOETZE	7-Feb-18
531091	UNITDCR	6-Feb-18	532809	FSL	7-Feb-18
512511	VARUNME	6-Feb-18	534063	FUTSOL	7-Feb-18
517015	VINDHYATEL	6-Feb-18	532345	GATI	7-Feb-18
509026	VJTFEDU	6-Feb-18	532767	GAYAPROJ	7-Feb-18
502986	VTL	6-Feb-18	522275	GET&D	7-Feb-18
590073	WHEELS	6-Feb-18	506186	GLXYENT	7-Feb-18
519224	WILLAMAGOR	6-Feb-18	540743	GODREJAGRO	7-Feb-18
512017	ZEXDONTR	6-Feb-18	532957	GOKAKTEX	7-Feb-18
512367	ZSHERAPR	6-Feb-18	532980	GOKUL	7-Feb-18
512291	ZSPEEDCO	6-Feb-18	526797	GREENPLY	7-Feb-18
508987	ABACUS	7-Feb-18	514386	GUJCOTEX	7-Feb-18
530431	ADORFO	7-Feb-18	524080	HARLETH	7-Feb-18
522273	AHMDSTE	7-Feb-18	517271	HBLPOWER	7-Feb-18
524288	AIMCOPEST	7-Feb-18	532129	HEXAWARE	7-Feb-18
526397	ALPHAGEO	7-Feb-18	509895	HINDMILL	7-Feb-18
532475	APTECHT	7-Feb-18	526761	HOWARHO	7-Feb-18
526433	ASMTEC	7-Feb-18	532835	ICRA	7-Feb-18
530233	AUROLAB	7-Feb-18	532514	IGL	7-Feb-18
524804	AUOPHARMA	7-Feb-18	506945	IGLFXPL-B	7-Feb-18
509009	AUSOMENT	7-Feb-18	505539	IMCFINA	7-Feb-18
507944	BAJAJST	7-Feb-18	532100	INDOCITY	7-Feb-18
511724	BALFC	7-Feb-18	500207	INDORAMA	7-Feb-18
524828	BDH	7-Feb-18	532717	INDOTECH	7-Feb-18
500048	BEML	7-Feb-18	532150	INDRAMEDCO	7-Feb-18

532851	INSECTICID	7-Feb-18	519230	RICHIRICH	7-Feb-18
505358	INTEGRAEN	7-Feb-18	533017	RMMIL	7-Feb-18
524494	IPCALAB	7-Feb-18	531324	ROSELABS	7-Feb-18
532947	IRB	7-Feb-18	531869	SACHEMT	7-Feb-18
532825	JAGJANANI	7-Feb-18	503691	SAHARA	7-Feb-18
509715	JAYSHREETEA	7-Feb-18	530265	SAINIK	7-Feb-18
522263	JMCPROJECT	7-Feb-18	590051	SAKSOFT	7-Feb-18
530985	JPTSEC	7-Feb-18	540642	SALASAR	7-Feb-18
522287	KALPATPOWR	7-Feb-18	532005	SAMINDUS	7-Feb-18
539276	KAYA	7-Feb-18	505790	SCHAEFFLER	7-Feb-18
532054	KDDL	7-Feb-18	523449	SHARP	7-Feb-18
526423	KRITIIND	7-Feb-18	526739	SHAWGELTIN	7-Feb-18
533210	KRITINUT	7-Feb-18	503863	SHRMFGC	7-Feb-18
532899	KSCL	7-Feb-18	533014	SICAGEN	7-Feb-18
523594	KUNSTOFF	7-Feb-18	530907	SICAPIT	7-Feb-18
509048	LANCORHOL	7-Feb-18	532316	SKUMAR	7-Feb-18
505302	LXMIATO	7-Feb-18	532725	SOLARINDS	7-Feb-18
500267	MAJESAUT	7-Feb-18	526901	SONALAD	7-Feb-18
539044	MANAKSTELTD	7-Feb-18	532221	SONATSOFTW	7-Feb-18
505324	MANUGRAPH	7-Feb-18	521036	SOURCEIND	7-Feb-18
532105	MEGFI	7-Feb-18	531398	SOURCENTRL	7-Feb-18
539289	MJCO	7-Feb-18	590030	SPIC	7-Feb-18
539045	MNKALCOLTD	7-Feb-18	503806	SRF	7-Feb-18
537092	MODEX	7-Feb-18	508963	STRLGUA	7-Feb-18
503776	MODIPON	7-Feb-18	524542	SUKHJITS	7-Feb-18
538836	MONTECARLO	7-Feb-18	533306	SUMMITSEC	7-Feb-18
532621	MORARJEE	7-Feb-18	521180	SUPERSPIN	7-Feb-18
532991	MVL	7-Feb-18	526133	SUPERTEX	7-Feb-18
508989	NAVNETEDUL	7-Feb-18	530677	SUPREME	7-Feb-18
538772	NIYOGIN	7-Feb-18	513597	SURANAIND	7-Feb-18
530435	NOESISIND	7-Feb-18	519604	SURFI	7-Feb-18
516082	NRAGRINDQ	7-Feb-18	535621	SVGLOBAL	7-Feb-18
502165	OCL	7-Feb-18	523301	TCPLPACK	7-Feb-18
539598	ORACLECR	7-Feb-18	533553	TDPOWERSYS	7-Feb-18
531157	ORGCOAT	7-Feb-18	509917	TECHCON	7-Feb-18
531280	PANKAJPO	7-Feb-18	506162	TERRAFORM	7-Feb-18
507864	PIONRINV	7-Feb-18	512157	TERRAREAL	7-Feb-18
532254	POLARIS	7-Feb-18	526650	TFCILTD	7-Feb-18
519359	POONADAL	7-Feb-18	532779	TORNTPOWER	7-Feb-18
533274	PRESTIGE	7-Feb-18	519303	TROMBOEXT	7-Feb-18
512591	PULSRIN	7-Feb-18	500148	UFLEX	7-Feb-18
538993	PUROHITCON	7-Feb-18	504212	UNIVCABLES	7-Feb-18
539678	QUICKHEAL	7-Feb-18	523261	VENKYS	7-Feb-18
507962	RAJATH	7-Feb-18	524038	VENLONENT	7-Feb-18
532370	RAMCOSYS	7-Feb-18	500575	VOLTAS	7-Feb-18
522281	RAMRAT	7-Feb-18	531335	ZYDUSWELL	7-Feb-18
507300	RAVALSUGAR	7-Feb-18	532883	ZYLOG	7-Feb-18
540709	RELHOME	7-Feb-18	526921	21STCENMGM	8-Feb-18

500002	ABB	8-Feb-18	530581	EKAMLEA	8-Feb-18
539560	ABHIJIT	8-Feb-18	524768	EMMESSA	8-Feb-18
500410	ACC	8-Feb-18	512441	ENBETRD	8-Feb-18
539056	ADLABS	8-Feb-18	533261	EROSMEDIA	8-Feb-18
500463	AGCNET	8-Feb-18	514118	ESKAY	8-Feb-18
513349	AJMERA	8-Feb-18	532511	EXCELCROP	8-Feb-18
538778	AKASHDEEP	8-Feb-18	533400	FCONSUMER	8-Feb-18
530133	AMCOIND	8-Feb-18	500141	FERROALL	8-Feb-18
532828	AMDIND	8-Feb-18	533896	FERVENTSYN	8-Feb-18
532418	ANDHRABANK	8-Feb-18	507552	FOODSIN	8-Feb-18
532397	ARMSPAPER	8-Feb-18	500655	GARWARPOLY	8-Feb-18
514482	ASAHIIND	8-Feb-18	539407	GENCON	8-Feb-18
519174	ASHAI	8-Feb-18	517300	GIPCL	8-Feb-18
538777	ASIACAP	8-Feb-18	533212	GKB	8-Feb-18
530723	ASITCFIN	8-Feb-18	531758	GKCONS	8-Feb-18
511427	ATNINTER	8-Feb-18	532296	GLENMARK	8-Feb-18
512265	AVONMERC	8-Feb-18	513528	GLITTEKG	8-Feb-18
532507	BAGFILMS	8-Feb-18	531928	GOLCA	8-Feb-18
500031	BAJAJELEC	8-Feb-18	531913	GOPAIST	8-Feb-18
523319	BALMLAWRIE	8-Feb-18	533761	GPTINFRA	8-Feb-18
500038	BALRAMCHIN	8-Feb-18	532482	GRANULES	8-Feb-18
509449	BHAGWOX	8-Feb-18	526751	GRATEXI	8-Feb-18
500493	BHARATFORG	8-Feb-18	532702	GSPL	8-Feb-18
500103	BHEL	8-Feb-18	532775	GTINFRA	8-Feb-18
514272	BHILSPIN	8-Feb-18	500173	GUJFLUORO	8-Feb-18
500058	BIHSPOING	8-Feb-18	524754	GUJMEDI	8-Feb-18
531936	BLUECHIP	8-Feb-18	532160	GUJSTATFIN	8-Feb-18
506981	BLUECHIPT	8-Feb-18	515147	HALDYNGL	8-Feb-18
500020	BOMDYEING	8-Feb-18	514370	HARPOLY	8-Feb-18
502219	BOROSIL	8-Feb-18	500467	HARRMALAYA	8-Feb-18
530249	BRIDGESE	8-Feb-18	539787	HCG	8-Feb-18
532929	BRIGADE	8-Feb-18	539224	HCKKVENTURE	8-Feb-18
517421	BUTTERFLY	8-Feb-18	533525	HEALTHTECH	8-Feb-18
532321	CADILAHC	8-Feb-18	500292	HEIDELBERG	8-Feb-18
500084	CESC	8-Feb-18	532859	HGS	8-Feb-18
531235	CITIPOR	8-Feb-18	524735	HIKAL	8-Feb-18
539091	CITL	8-Feb-18	511169	HIMALFD	8-Feb-18
539436	COFFEEDAY	8-Feb-18	511194	ICDSLTD	8-Feb-18
534691	COMCL	8-Feb-18	530979	INDIAHOME	8-Feb-18
535267	COMFINCAP	8-Feb-18	504741	INDIANHUME	8-Feb-18
531216	COMFINTE	8-Feb-18	532745	INDICAP	8-Feb-18
532783	DAAWAT	8-Feb-18	531929	INNOCORP	8-Feb-18
502820	DCM	8-Feb-18	532072	INTERDIGI	8-Feb-18
500645	DEEPAKFERT	8-Feb-18	523752	IOSYSTEM	8-Feb-18
539190	DFL	8-Feb-18	533181	ISFT	8-Feb-18
532180	DHANBANK	8-Feb-18	531109	ISHANCH	8-Feb-18
533336	DHUNINV	8-Feb-18	501311	JAYBHCR	8-Feb-18
500068	DISAQ	8-Feb-18	512233	JAYTEX	8-Feb-18



514034	JBFIND	8-Feb-18
532627	JPOWER	8-Feb-18
521242	KANDAGIRI	8-Feb-18
512399	KAPASHI	8-Feb-18
531904	KARUNACAB	8-Feb-18
531163	KEMISTAR	8-Feb-18
512597	KEYCORPSER	8-Feb-18
524019	KINGFA	8-Feb-18
530443	KIRANSY-B	8-Feb-18
530771	KLGCAP	8-Feb-18
514221	KLIFESTYL	8-Feb-18
523323	KOVAI	8-Feb-18
512329	KRL	8-Feb-18
530149	KSLIND	8-Feb-18
539524	LALPATHLAB	8-Feb-18
512048	LUHARUKA	8-Feb-18
515059	MADHUDIN	8-Feb-18
511000	MADHUSE	8-Feb-18
531664	MAHAV	8-Feb-18
501473	MALTC	8-Feb-18
532932	MANAKSIA	8-Feb-18
531213	MANAPPURAM	8-Feb-18
503101	MARATHON	8-Feb-18
512415	MERCTRD	8-Feb-18
513721	MFSINTRCRP	8-Feb-18
507621	MLKFOOD	8-Feb-18
539046	MNKCMLTD	8-Feb-18
539762	MODCL	8-Feb-18
509760	MODRNSH	8-Feb-18
530169	MOHITPPR	8-Feb-18
523160	MORGANITE	8-Feb-18
523832	MUKATPIP	8-Feb-18
501477	MULLER	8-Feb-18
531821	MUNOTHFI	8-Feb-18
511401	MUNOTHI	8-Feb-18
533398	MUTHOOTFIN	8-Feb-18
521030	NAKODA	8-Feb-18
530557	NCLRESE	8-Feb-18
503780	NRC	8-Feb-18
526723	NTCIND	8-Feb-18
500313	OILCOUNTUB	8-Feb-18
532827	PAGEIND	8-Feb-18
530555	PARACABLES	8-Feb-18
539889	PARAGMILK	8-Feb-18
521080	PASARI	8-Feb-18
531352	PEETISEC	8-Feb-18
532522	PETRONET	8-Feb-18
513403	PMTELELIN	8-Feb-18
532933	PORWAL	8-Feb-18

531802	PRERINFRA	8-Feb-18
513613	PRESHAMET	8-Feb-18
530669	PRESOFI	8-Feb-18
526773	PRESSURS	8-Feb-18
526009	PROCAL	8-Feb-18
540544	PSPPROJECT	8-Feb-18
539006	PTCIL	8-Feb-18
540175	REGENCY	8-Feb-18
505817	REILELEC	8-Feb-18
500111	RELCAPITAL	8-Feb-18
511712	RELICTEC	8-Feb-18
532915	RELIGARE	8-Feb-18
532687	REPRO	8-Feb-18
509845	RJSHAH	8-Feb-18
500113	SAIL	8-Feb-18
521240	SAMBANDAM	8-Feb-18
516003	SARDAPLY	8-Feb-18
539201	SATIA	8-Feb-18
511076	SATINDLTD	8-Feb-18
502175	SAURASHCEM	8-Feb-18
511577	SAVFI	8-Feb-18
538857	SCC	8-Feb-18
505141	SCOOTER	8-Feb-18
534598	SEPOWER	8-Feb-18
513097	SHBCLQ	8-Feb-18
524336	SHHARICH	8-Feb-18
539470	SHREEGANES	8-Feb-18
539334	SHREEPUSHK	8-Feb-18
516016	SHREYANIND	8-Feb-18
531219	SHYAMAINFO	8-Feb-18
539742	SIMBHALS	8-Feb-18
533018	SIMPLXMIL	8-Feb-18
533019	SIMPLXPAP	8-Feb-18
500472	SKFINDIA	8-Feb-18
539861	SKIL	8-Feb-18
532815	SMSPHARMA	8-Feb-18
521036	SOURCEIND	8-Feb-18
517166	SPELS	8-Feb-18
533110	SPSL	8-Feb-18
516022	STARPAPER	8-Feb-18
533316	STEL	8-Feb-18
526951	STYLAMIND	8-Feb-18
506655	SUDARSCHEM	8-Feb-18
521113	SUDTIND-B	8-Feb-18
532711	SUNILHITEC	8-Feb-18
523283	SUPERHOUSE	8-Feb-18
533101	SURYAAMBA	8-Feb-18
532782	SUTLEJTEX	8-Feb-18
530217	SWOEF	8-Feb-18

### Earning Estimate Q3FY18

BSE CODE	NSE CODE	Sales Rs Cr	Sales YoY	Pat Rs Cr	PAT YoY
5-Feb-18	BOSCHLTD	3126	17.00	292	36.20
5-Feb-18	COLPAL	984	12.50	150	17.20
5-Feb-18	ENIL	146	(3.30)	14	(13.10)
5-Feb-18	TATAMOTORS	74172	16.00	2672	LP
6-Feb-18	BLUESTARCO	996	8.50	20	36.30
6-Feb-18	CASTROL	882	13.20	153	(1.90)
6-Feb-18	DISHTV	801	7.10	29	9.70
6-Feb-18	HEROMOTOCO	7101	11.60	806	4.40
6-Feb-18	JSWENERGY	2172	14.10	65	204.10
6-Feb-18	LUPIN	4003	(10.70)	427	(32.60)
6-Feb-18	PNB	4125	10.60	577	178.70
6-Feb-18	RAMCOCEM	1105	17.80	156	4.20
6-Feb-18	SIEMENS	2637	15.00	184	15.00
6-Feb-18	THERMAX	951	16.90	68	19.60
7-Feb-18	AUROPHARMA	4265	9.20	638	13.10
7-Feb-18	CIPLA	4265	16.90	479	27.80
7-Feb-18	DALMIABHA	1941	11.60	115	221.70
7-Feb-18	EICHERMOT	2207	20.30	548	31.00
7-Feb-18	GET&D	1270	9.30	53	20.50
7-Feb-18	HEXAWARE	988	5.00	115	(5.40)
7-Feb-18	IGL	1144	20.80	177	18.00
7-Feb-18	IPCALAB	833	12.60	74	63.70
7-Feb-18	IRB	1374	(2.60)	159	(13.40)
7-Feb-18	KSCL	81	20.00	17	150.00
7-Feb-18	NAVNETEDUL	200	28.00	17	33.80
7-Feb-18	SRF	1326	10.00	103	(8.00)
7-Feb-18	VOLTAS	1377	16.60	90	10.50
8-Feb-18	MUTHOOTFIN	983	35.50	439	50.70
8-Feb-18	ABB	2745	10.20	186	27.00
8-Feb-18	ACC	3470	31.70	202	64.10
8-Feb-18	BHARATFORG	1296	37.30	212	64.60
8-Feb-18	BHEL	6657	5.20	72	(23.60)
8-Feb-18	CADILAHC	3128	35.40	551	95.40
8-Feb-18	CESC	1637	1.00	158	3.90
8-Feb-18	GLENMARK	2318	(5.90)	256	(46.30)
8-Feb-18	GRANULES	406	13.00	43	11.20
8-Feb-18	GSPL	378	41.70	193	62.60
8-Feb-18	PAGEIND	615	16.50	74	17.00
8-Feb-18	PARAGMILK	491	10.00	19	LP
8-Feb-18	PETRONET	6855	8.80	560	40.90
8-Feb-18	SAIL	14428	27.70	(108)	Loss
8-Feb-18	TATACOMM	4268	(2.10)	25	1297.80
8-Feb-18	TORNTPHARM	1552	9.80	209	(8.80)
9-Feb-18	ALKEM	1668	12.60	243	4.10
9-Feb-18	BANKBARODA	3777	20.50	528	108.80
9-Feb-18	BATA	679	6.00	57	(3.40)
9-Feb-18	BPCL	63373	18.40	2085	(9.90)

9-Feb-18	HINDPETRO	58694	21.10	1472	(7.40)
9-Feb-18	INDIACEM	1339	6.70	29	(3.60)
9-Feb-18	M&M	11633	9.90	1030	30.50
9-Feb-18	MARICO	1612	14.00	209	9.00
9-Feb-18	MGL	595	18.00	117	18.50
9-Feb-18	NATIONALUM	2609	31.20	296	74.00
9-Feb-18	OIL	2718	14.40	707	55.60
9-Feb-18	ONGC	24294	21.90	6711	54.20
9-Feb-18	SBIN	18883	6.40	2140	17.50
9-Feb-18	SUNTV	683	15.80	296	23.40
9-Feb-18	TATASTEEL	30268	8.30	1330	553.30
10-Feb-18	AMARAJABAT	1507	13.50	125	11.20
10-Feb-18	BIRLACORPN	1429	93.30	4	111.60
10-Feb-18	COALINDIA	21989	7.70	3324	15.20

### Result Q3FY18

BSE CODE	NSE CODE	Sales Rs Cr	Sales YoY	Pat Rs Cr	PAT YoY
522004	BATLIBOI	26	3	(1.39)	(75)
505681	BIMETAL	45	44	1.74	(178)
500128	ELECTCAST	512	11	20.39	(15)
509546	GRAVISSHO	15	24	1.07	-
506076	GRINDWELL	363	17	40.24	45
509162	INDAG	44	(1)	4.68	1
500238	WHIRLPOOL	958	18	53.14	(4)
502420	ORIENTPPR	169	26	10.50	276
500540	PREMIER	2	(78)	(31.87)	9
590013	XPROINDIA	59	(2)	7.37	(193)
503229	Simplex Realty	4	486	(0.17)	(11)
507747	TTKHEALTH	146	19	12.25	243
507960	GUJHOTE	1	(3)	0.79	(7)
500155	GARDENSILK	844	44	(1.88)	(95)
522073	HITECHGEAR	121	33	7.44	129
511034	JINDRILL	36	(67)	(2.30)	(130)
524037	RAMAPHOSP	108	15	1.44	(41)
520086	SICAL	329	33	6.96	(28)
507912	LKPMERFIN	16	123	(10.98)	27350
509152	GRPLTD	73	7	(0.23)	(120)
503015	MODERN	18	31	(0.44)	(72)
523395	3MINDIA	646	12	91.70	116
523411	KRONECOMM	16	19	0.95	(10)
521149	PRIMEURB	27	155	0.45	(80)
500034	BAJFINANCE	3541	32	766.81	38
524558	NEULANLAB	116	(12)	1.21	(67)
526642	MIRZAIN	254	11	20.91	21
512626	ORBTEXP	28	6	5.22	19
531273	RADHEDE	3	175	0.60	200
506261	MODISNME	46	(8)	2.46	(42)
532375	TIPSINDLTD	10	41	0.15	(86)
531447	Rockon Enterp.	0	(80)	0.22	(8)

532486	POKARNA	88	(1)	13.60	(21)
532640	CYBERMEDIA	8	(36)	(1.74)	1482
533150	GODREJPROP	627	21	25.94	(66)
532390	TAJGVK	83	15	9.86	198
532371	TTML	418	(36)	(480.75)	16
532460	PONNIERODE	43	(45)	(3.35)	(172)
532333	HBPORT	0	21	(0.06)	(78)
532334	HBESD	24	7	(2.92)	(41)
532478	UBL	1197	17	47.38	(2)
509053	BANASFN	1	(21)	(1.26)	(40)
532978	BAJAJFINSV	7665	21	748.59	22
532944	ONMOBILE	158	(12)	2.65	(370)
532983	RPGLIFE	96	45	5.46	396
535755	ABFRL	1855	9	35.00	(392)
539346	SADBHIN	624	94	(41.20)	(41)
536507	FLFL	1189	12	37.65	5
539083	INOXWIND	91	(92)	(46.12)	(143)
540293	PRICOLLTD	274	(6)	8.71	(17)
506767	ALKYLAMINE	153	12	15.16	(10)
500530	BOSCHLTD	3072	17	299.74	37
532548	CENTURYPLY	510	20	46.39	24
500830	COLPAL	1027	19	169.87	33
531508	EVEREADY	369	12	20.94	(40)
500106	IFCI	622	9	(176.87)	292
517380	IGARASHI	102	(18)	16.39	(8)
532642	JSWHL	13	(42)	9.08	(51)
500234	KAKATCEM	35	(54)	(5.61)	(163)
526947	LAOPALA	70	7	48.53	261
532654	MCLEODRUSS	556	29	97.44	313
522241	MMFL	146	29	15.16	49
500354	RAJSREESUG	128	(25)	(22.07)	86
532826	RAJTV	15	(19)	0.15	(87)
515043	SAINTGOBAIN	40	37	5.29	409
540203	SFL	452	(7)	35.50	(15)
500570	TATAMOTORS	74156	16	1923.00	1624
534369	TBZ	547	1	7.38	20
522113	TIMKEN	279	22	9.17	(31)

Economic Calendar					
Country	Monday 5th Feb 18	Tuesday 6th Feb 18	Wednesday 7th Feb 18	Thursday 8th Feb 18	Friday 9th Feb 18
<b>US</b>	Average Hourly Earnings m/m , Non-Farm Employment Change ,Unemployment Rate , Trade Balance , Factory Orders m/m.		NFIB Small Business Index , JOLTS Job Openings , IBD/TIPP Economic Optimism , Consumer Credit m/m	Import Prices m/m , Final Wholesale Inventories m/m , Crude Oil Inventories , 10-y Bond Auction	PPI m/m, Unemployment Claims , Core PPI m/m , Natural Gas Storage , 30-y Bond Auction , Federal Budget Balance
<b>UK/EURO ZONE</b>	German Retail Sales m/m , CPI Flash Estimate y/y , Core CPI Flash Estimate y/y , PPI m/m	Halifax HPI m/m , Italian Retail Sales m/m , Sentix Investor Confidence, Retail Sales m/m , BRC Retail Sales Monitor y/y	Unemployment Rate	French Industrial Production m/m , French Trade Balance, Italian Industrial Production m/m ,Manufacturing Production m/m , Goods Trade Balance	BOE Credit Conditions Survey , Industrial Production m/m , 10-y Bond Auction , ECB Monetary Policy Meeting Accounts
<b>INDIA</b>					



## Narnolia Securities Ltd

201 | 2nd Floor | Marble Arch Building | 236B-AJC Bose  
Road | Kolkata-700 020 , Ph : 033-40501500

email: [narnolia@narnolia.com](mailto:narnolia@narnolia.com),  
website : [www.narnolia.com](http://www.narnolia.com)

**Risk Disclosure & Disclaimer:** This report/message is for the personal information of the authorized recipient and does not construe to be any investment, legal or taxation advice to you. Narnolia Securities Ltd. (Hereinafter referred as NSL) is not soliciting any action based upon it. This report/message is not for public distribution and has been furnished to you solely for your information and should not be reproduced or redistributed to any other person in any form. The report/message is based upon publicly available information, findings of our research wing "East wind" & information that we consider reliable, but we do not represent that it is accurate or complete and we do not provide any express or implied warranty of any kind, and also these are subject to change without notice. The recipients of this report should rely on their own investigations, should use their own judgment for taking any investment decisions keeping in mind that past performance is not necessarily a guide to future performance & that the the value of any investment or income are subject to market and other risks. Further it will be safe to assume that NSL and /or its Group or associate Companies, their Directors, affiliates and/or employees may have interests/ positions, financial or otherwise, individually or otherwise in the recommended/mentioned securities/mutual funds/ model funds and other investment products which may be added or disposed including & other mentioned in this report/message.