

SGX NIFTY : 8238 (1 Pt Up)

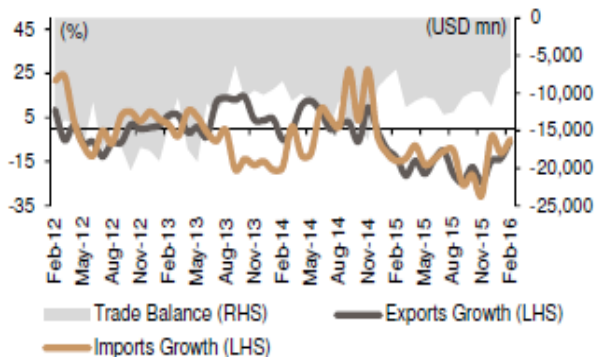
Quote of the Day

"We have to understand the competitive position and dynamics of the business and look out into the future. With some businesses, you can't. The math of investing was set out by Aesop in 600 BC: a bird in the hand is worth two in the bush. We ask ourselves how certain we are about birds in the bush. Are there really two? Might there be more? We simply choose which bushes we want to buy from in the future."

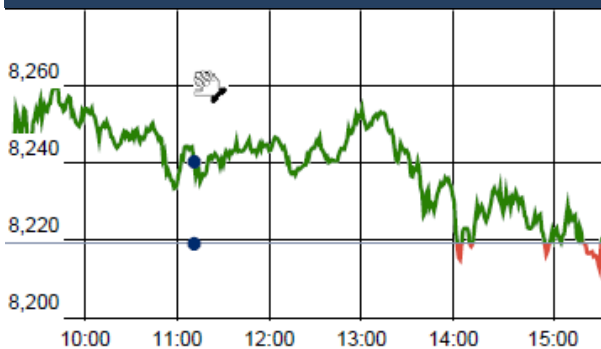
Warren Buffett

Chart of the Day

Trade Deficit %



Index Action Nifty (3th June 16)



Index

Contents	Page	Coverage
News	2	Update
Economic Calendar	3	Update

Market

Name	Value	Change
Sensex	26,843.03	0.11
Nifty	8220.80	1.85
DOW	17,807.06	(31.60)
NASDAQ	4,942.52	(28.84)
CAC	4,421.78	(44.22)
DAX	10,103.26	(104.74)
FTSE	6,209.63	24.02
NIKKEI	16,452.95	(189.28)
HANG SENG	20,896.86	(50.38)
EW ALL SHARE	13979.91	12.58

Instituional Turnover

FII

Investor	Buy(Cr.)	Sale(Cr.)	Net(Cr.)
03-Jun-16	5571.69	3986.68	1585.01
June,16	10043.98	7937.12	2106.86
2016	55208.03	53217.31	1990.72

DII

Investor	Buy(Cr.)	Sale(Cr.)	Net(Cr.)
03-Jun-16	1439.25	1832.46	(393.21)
June,16	21356.30	30887.02	(9530.72)
2016	21498.54	18200.23	3298.31

Commodity Price

Commodity/Currencies	Value	
GOLD	29387.00	↑
SILVER	39079.00	↑
CRUDEOIL	48.86	↑
COPPER	313.60	↓
NATURALGAS	162.00	↓
DOLLAR/RS.	67.25	↓
EURO/RS.	76.17	↑
POUND/RS.	97.26	↓

Market Snapshot

Top Price Performers

Top Performers 1D	% Change	Top Performers 1W	% Change	Top Performers 1M	% Change
BILPOWER	19.77	GOKEX	54.32	PRIMESECU	81.12
DHARSUGAR	18.56	DHARSUGAR	42.71	SHILPI	63.39
BHARTISHIP	16.85	BILPOWER	37.33	STOREONE	62.71
CALSREF	16.67	GOKUL	32.22	KANANIIND	56.10
THIRUSUGAR	16.31	EMKAY	30.00	TRIGYN	52.05

Worst Performers 1D	% Change	Worst Performers 1W	% Change	Worst Performers 1M	% Change
NEOCORP	(19.95)	NEOCORP	(27.52)	PANTALOONR	(83.12)
RUSHIL	(10.71)	VIVIDHA	(22.55)	JINDALPHOT	(54.86)
GOKUL	(10.00)	ZICOM	(22.42)	ZICOM	(42.68)
IDEA	(9.97)	TREEHOUSE	(21.13)	PRAKASHSTL	(42.15)
VIVIDHA	(9.96)	IVC	(20.97)	NEOCORP	(39.93)

Top News

- **SML Isuzu Mgt Guideline:** Sales in the month of May went up 37.3 percent year-on-year (YoY) to 1929 units. Strong demand of school buses in May helped improve sales figure . the company is looking at capacity expansion and expects an increase in capacity to 22000 units by FY17. Higher replacement demand has aided commercial vehicle sales and positive sentiment has picked up in the last 4-5 months .

- **Prestige Estates Mgt Guyideline :** Real estate market still has oversupply from different quarter . Company is positive of recovery in FY17 on back on strong inventory, new launches and pick-up in the housing demand. This year will see spillover of job creation in office market into home markets. Mid-income housing is expected to grow strongly . Apart from new launches in Chennai, Hyderabad and Bangalore, old inventory from last year will be sold over this time, but it is subject to approvals, he says. In next two quarters, pending approvals are expected to come through. The company has guided for 15 percent higher pre-sales in FY17.

- **TeamLease Mgt Guideline :** Company clocked a revenue growth of 25 percent in FY16 and the management believes to sustain the same growth in the future. the company has been investing in staffing business and HR services and any further investment will be towards acquisition. Mgt further said that no additional capital is required for regular running of business. As it is a low margin business, Mgt believes it to improve eventually if TeamLease sustains a 25 percent growth rate.

- **Brigade Enterprises** expects to continue the momentum in FY17. The company is hopeful of clocking 30-35 percent growth in topline and bottomline in FY17. Company said some of the projects launched during FY16 will come in for revenue recognition during FY17 which will contribute to the company's earnings.

- **Muthoot Finance** hopes to grow its asset under management (AUM) by at least 10 percent in FY17 . Focus will be on maintaining net interest margin at 11-12 percent, he said, adding, any benefit that accrues due to favourable cost of funds will be passed on to our customers. Stressed legacy book has been mostly cleared off and whatever is left is

- **Zydus Cadila** has received approval from the US health regulator to initiate a phase II clinical trial of Saroglitazar in patients with non-alcoholic steatohepatitis (NASH) of the liver. The company has received nod from the US Food and Drug Administration (USFDA) to conduct randomised, double-blind phase II trial to evaluate Saroglitazar in strengths of 1mg, 2mg and 4mg versus placebo,

- **Mylan N.V. and Biocon Ltd.** announced the presentation of data from the HERITAGE study at the 2016 American Society of Clinical Oncology (ASCO) Annual Meeting in Chicago, June 3-7. The study confirmed the efficacy, safety and immunogenicity of MYL-14010, the proposed biosimilar trastuzumab co-developed by Biocon and Mylan, in comparison to branded trastuzumab.

- **Colombian GDP** fell to 2.5%, from 3.3% in the preceding month. Analysts had expected Colombian GDP to fall to 2.6% last month.

- **ISM Non-Manufacturing PMI** fell to a seasonally adjusted annual rate of 52.9, from 55.7 in the preceding quarter. Analysts had expected ISM Non-Manufacturing PMI to fall to 55.5 in the last quarter.

- **U.S. Factory Orders** rose to a seasonally adjusted 1.9%, from 1.7% in the preceding month whose figure was revised up from 1.1%. Analysts had expected U.S. Factory Orders to fall to 0.9% last month.

- **U.S. trade gap rose** 5.3 percent to \$37.4 billion. March's trade deficit was revised down to \$35.5 billion, which was the smallest since December 2013, from the previously reported \$40.4 billion

- **U.S. Department of Labor said the unemployment rate** fell to a seasonally adjusted 4.7%, from 5.0% in the preceding month . Analysts had expected the U.S. unemployment rate to fall to 4.9% last month.

- **Canadian trade balance** rose to a seasonally adjusted -2.94B,

Economic Calendar

Country	Monday 6th June 16	Tuesday 7th June 16	Wednesday 8th June 16	Thursday 9th June 16	Friday 10th June 16
US	Fed Chair Yellen Speaks , Labor Market Conditions Index m/m.	Revised Nonfarm Productivity q/q , Revised Unit Labor Costs q/q , IBD/TIPP Economic Optimism.	Crude Oil Inventories .	Unemployment Claims ,Wholesale Inventories m/m.	
UK/EURO ZONE	Retail PMI , Sentix Investor Confidence.	German Industrial Production m/m , French Gov Budget Balance , Revised GDP q/q , Halifax HPI m/m .	Manufacturing Production m/m , Industrial Production m/m , NIESR GDP Estimate .	ECB President Draghi Speaks , Italian Quarterly Unemployment Rate , Goods Trade Balance .	German Final CPI m/m , German WPI m/m , French Industrial Production m/m .
INDIA					



(Regn. No. : INP 000004011)

Narnolia Securities Ltd.**Narnolia Research Lab**

Stellar IT Park | 5th Floor | Office Space No. 6 | Tower-IIInd Plot
No. C-25 | Sector-62 | Noida | Ph : 0120-4215110

Narnolia Securities Ltd.

201 | 2nd Floor | Marble Arch Building | 236B-AJC Bose Road Kolkata-
700 020 Ph : 033-40501500
Email : narnolia@narnolia.com website :www.narnolia.com