

SGX NIFTY : 8211 (68 Pt Up)

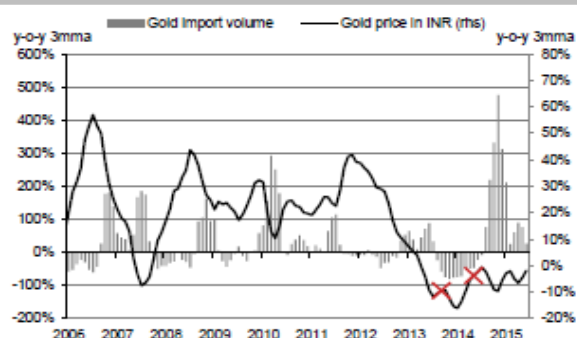
Quote of the Day

"There's a clarity that comes with great ideas: You can explain why something's a great business, how and why it's cheap, why it's cheap for temporary reasons and how, on a normal basis, it should be trading at a much higher level. You're never sitting there on the 40th page of your spreadsheet, as Buffett would say, agonizing over whether you should buy or not."

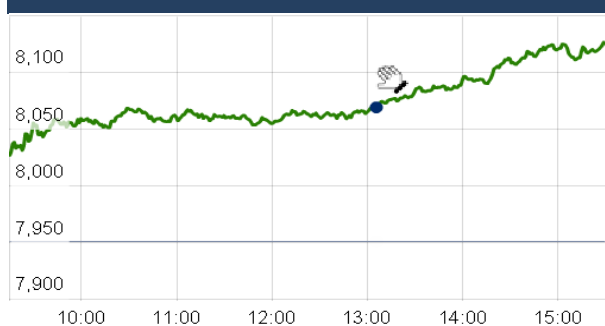
Joel Greenblatt

Chart of the Day

Gold Import Trend



Index Action Nifty (5th Oct 15)



Index

Contents	Page	Coverage
News	2	Update
Economic Calendar	3	Update

Market

Name	Value	Change
Sensex	26,785.55	564.60
Nifty	8119.30	168.40
DOW	16,314.67	113.35
NASDAQ	4,781.26	73.48
CAC	4,616.90	158.02
DAX	9,814.79	261.72
FTSE	6,298.92	168.94
NIKKEI	18,240.59	235.10
HANG SENG	22,021.59	167.09
EW ALL SHARE	14021.31	266.40

Instituional Turnover

FII

Investor	Buy(Cr.)	Sale(Cr.)	Net(Cr.)
05-Oct-15	5203.78	4553.88	649.90
Oct,15	63984.68	73061.09	(9076.41)
2015	885942.03	892191.40	(6249.37)

DII

Investor	Buy(Cr.)	Sale(Cr.)	Net(Cr.)
05-Oct-15	2409.69	2043.92	365.77
Oct,15	30142.81	22160.18	7982.63
2015	356441.13	306507.54	49933.59

Commodity Price

Commodity/Currencies	Value	
GOLD	26394.00	↓
SILVER	36778.00	↓
CRUDEOIL	45.23	↓
COPPER	337.80	↓
NATURALGAS	160.60	↓
DOLLAR/RS.	65.29	↑
EURO/RS.	72.94	↑
POUND/RS.	98.77	↑

Market Snapshot

Top Price Performers

Top Performers 1D	% Change	Top Performers 1W	% Change	Top Performers 1M	% Change
BIRLACOT	25.00	LITL	86.56	KSOILS	159.57
INFOMEDIA	20.00	CANDC	60.92	FARMAXIND	145.45
UTTAMSTL	19.88	RESTILE	44.66	ERAINFRA	127.04
GUJSIDHCEM	19.88	MLKFOOD	43.38	LITL	111.70
HCC	19.33	LAKSHMIEFL	42.32	MODIRUBBER	79.67

Worst Price Performers

Worst Performers 1D	% Change	Worst Performers 1W	% Change	Worst Performers 1M	% Change
SATINDLTD	(16.74)	BLUESTINFO	(25.37)	AEGISCHEM	(88.20)
PRADIP	(13.61)	MIC	(24.77)	AMTEKINDIA	(61.60)
XLENERGY	(9.75)	AMTEKINDIA	(22.22)	VTCIND	(46.26)
MIC	(9.72)	HELIOSMATH	(22.12)	GOKUL	(38.46)
AADHAARVEN	(9.09)	CMAHENDRA	(21.19)	ROLATAN	(36.94)

Top News

- **Copthall Mauritius Investment** offloaded 3.78 lakh shares worth over Rs 63.50 crore in Jubilant FoodWorks in an open market transaction. According to the bulk deal data available with the BSE, Copthall Mauritius Investment sold 3.78 lakh shares, or 0.57 percent stake in the company.

- **Jet Airways** slashed its business and economy class fares by up to 30 percent across its global destinations including those in the US and Europe for a limited period. Bookings under the six-day festive sale offer commence today for the travel from October 5 and onwards. These special fares are on offer for travel on board Jet Airways' operated international flights to the destinations in the Gulf, South Asia and South-east Asia region, the US and Europe and Canada regions

- **Cox & Kings** owned Meininger Hotels will open a hotel in Budapest, Hungary by spring of 2018. The hotel which will be newly constructed will be operated by Meininger Hotels under a 20-year lease

- **Alok Industries** is getting additional export advance under Export Performance Bank Guarantee (EPBG) scheme. Alok has received an additional advance amounting to USD 50 million on October 01 under EPBG scheme. Total export advance has been received by the company till date is USD 925 million

- **Hitachi Home & Life Solutions** has divested stake in Hitachi Home into a global joint venture. Hitachi and Hitachi Appliance has announced completion of global joint venture agreement and will immediately commence operations of Johnson Controls-Hitachi Air Conditioning. As per the agreement, Johnson Controls has acquired 60 percent ownership stake of the new entity, which has more than 350 billion yen (around Rs 2.8 billion) sales annually. Hitachi Appliances has retained ownership of the remaining percent of the company.

- **Alstom** has bagged over 150 million euro (about Rs 1,102 crore) contract to provide train coaches and signalling solutions for the Lucknow Metro project.

- **DLF** announced that the Board will be take a call on raising USD 1.5 billion by selling part of its rental business. The proceeds from the same will also be used to halve its debt. Company is expecting bring clarity on the Compulsorily Convertible Preference Shares (CCPS) issue. The Board will also take a call on cutting stake in DLF rental business company by up to 50 percent and in the process raise USD 1.5-2 billion from a trusted private equity investor or sovereign fund. This is crucial because this is DLF's game plan now to cut its debt by almost 50 percent.

- **Bombardier** selects Tech Mahindra as supplier for C Series Aircraft's Health Management System. Bombardier Commercial Aircraft and Tech Mahindra have signed an agreement under which Tech Mahindra will develop the Aircraft Ground Support Systems for Bombardier's Aircraft Health Management Systems for the C series family of aircraft.

- **Euro Zone Retail Sales** fell to 0.0%, from 0.6% in the preceding month whose figure was revised up from 0.4%. Analysts had expected Euro Zone Retail Sales to fall to -0.1% last month.

- **The Chartered Institute of Purchasing & Supply and the NTC Economics said that U.K. Services PMI** fell to a seasonally adjusted annual rate of 53.3, from 55.6 in the preceding month. Analysts had expected U.K. Services PMI to rise to 56.0 last month.

- **Euro Zone Services PMI** fell to 53.7, from 54.0 in the preceding quarter. Analysts had expected Euro Zone Services PMI to remain unchanged at 54.0 in the last quarter.

- **German Services PMI** fell to 54.1, from 54.3 in the preceding month. Analysts had expected German Services PMI to remain unchanged at 54.3 last month.

- **Spanish services PMI** fell to a seasonally adjusted 54.6, from 59.6 in the preceding month. Analysts had expected Spanish services PMI to fall to 58.5 last month.

Result Calendar Q2FY16

BSE Code	Company Name	Date	BSE Code	Company Name	Date
506935	CONTCHM	05-Oct-15	513262	SSWL	23-Oct-15
533229	BAJAJCORP	07-Oct-15	532424	GODREJCP	24-Oct-15
512161	8KMILES	08-Oct-15	533179	PERSISTENT	25-Oct-15
539149	ICSL	09-Oct-15	500067	BLUESTARCO	26-Oct-15
532187	INDUSINDBK	09-Oct-15	500010	HDFC	26-Oct-15
533402	INNOIND	09-Oct-15	532988	RANEENGINE	26-Oct-15
530173	OSCARGLO	09-Oct-15	538268	WONDERLA	26-Oct-15
533569	SRSLTD	10-Oct-15	532215	AXISBANK	27-Oct-15
531247	ALPHA	12-Oct-15	531530	BETALA	27-Oct-15
500209	INFY	12-Oct-15	506395	COROMANDEL	27-Oct-15
524661	WELCURE	12-Oct-15	511676	GICHSGFIN	27-Oct-15
500089	DICIND	14-Oct-15	532504	NAVINFUOR	27-Oct-15
509567	GOACARBON	14-Oct-15	523642	PIIND	27-Oct-15
500189	HINDUJAVEN	14-Oct-15	500096	DABUR	28-Oct-15
517506	TTKPRESTIG	14-Oct-15	502180	SHREDIGCEM	28-Oct-15
505537	ZEEL	14-Oct-15	532498	SHRIRAMCIT	28-Oct-15
532175	CYIENT	15-Oct-15	517449	MAGNAELQ	29-Oct-15
590003	KARURVYSYA	15-Oct-15	500790	NESTLEIND	29-Oct-15
500253	LICHSGFIN	15-Oct-15	500420	TORNTPHARM	29-Oct-15
532819	MINDTREE	15-Oct-15	523754	EPCIN	30-Oct-15
506597	AMAL	16-Oct-15	532652	KTKBANK	30-Oct-15
517447	RSSOFTWARE	16-Oct-15	532313	MAHLIFE	30-Oct-15
539353	SWARAJAUTO	16-Oct-15	531049	NEELKAN	30-Oct-15
500407	SWARAJENG	16-Oct-15	500114	TITAN	30-Oct-15
513010	TATASPONGE	16-Oct-15	500660	GLAXO	31-Oct-15
506690	UNICHEMLAB	17-Oct-15	506655	SUDARSCEM	31-Oct-15
511288	GRUH	19-Oct-15	524038	VENLONENT	31-Oct-15
532281	HCLTECH	19-Oct-15	506590	PHILIPCARB	02-Nov-15
519552	HERITGFOOD	19-Oct-15	509480	BERGEPAIN	03-Nov-15
521248	KITEX	19-Oct-15	500338	PRISMCEM	03-Nov-15
500266	MAHSCOOTER	19-Oct-15	500414	TIMEX	03-Nov-15
532987	RBL	19-Oct-15	532548	CENTURYPLY	04-Nov-15
533228	SKSMICRO	19-Oct-15	532156	VAIBHAVGBL	04-Nov-15
500410	ACC	20-Oct-15	520151	SHREYAS	05-Nov-15
532978	BAJAJFINSV	20-Oct-15	500470	TATASTEEL	05-Nov-15
500034	BAJFINANCE	20-Oct-15	523736	DPL	06-Nov-15
502330	IPAPPM	20-Oct-15	500520	M&M	06-Nov-15
526299	MPHASIS	20-Oct-15	532777	NAUKRI	06-Nov-15
532661	RML	20-Oct-15	532133	IFGLREFRAC	07-Nov-15
532977	BAJAJ-AUTO	21-Oct-15	505800	RANEHOLDIN	09-Nov-15
500490	BAJAJHLDNG	21-Oct-15	522113	TIMKEN	09-Nov-15
500180	HDFCBANK	21-Oct-15	500387	SHREECEM	14-Nov-15
500228	JSWSTEEL	21-Oct-15	511626	RRFIN	14-Dec-15
532720	M&MFIN	21-Oct-15			
532756	MAHINDCIE	21-Oct-15			
532628	3IINFOTECH	23-Oct-15			
520119	ASAL	23-Oct-15			
500820	ASIANPAINT	23-Oct-15			

Economic Calendar

Country	Monday 5th Oct 15	Tuesday 6th Oct 15	Wednesday 7th Oct 15	Thursday 8th Oct 15	Friday 9th Oct 15
US	Final Services PMI , ISM Non-Manufacturing PMI , Labor Market Conditions Index m/m .	Trade Balance , IBD/TIPP Economic Optimism , RICS House Price Balance , BRC Shop Price Index y/y .	Crude Oil Inventories , Consumer Credit m/m .	Unemployment Claims , Natural Gas Storage , 10-y Bond Auction , FOMC Meeting Minutes .	Import Prices m/m , Wholesale Inventories m/m , Federal Budget Balance .
UK/EURO ZONE	Services PMI , Retail Sales m/m , Sentix Investor Confidence , French Final Services PMI ,	German Factory Orders m/m , Trade Balance , Housing Equity Withdrawal q/q ,	Trade Balance , IBD/TIPP Economic Optimism , RICS House Price Balance , BRC Shop Price Index y/y .	MPC Official Bank Rate Votes , Official Bank Rate , Asset Purchase Facility , MPC Asset Purchase Facility Votes , MPC Rate Statement , Monetary Policy Summary .	French Industrial Production m/m , Italian Industrial Production m/m , Construction Output m/m , Employment Change , Unemployment Rate .
INDIA	HSBC India Services PMI				

Narnolia Securities Ltd.

Narnolia Research Lab

Stellar IT Park | 5th Floor | Office Space No. 6 | Tower-I/Ind Plot No. C-25 | Sector-62 | Noida
| Ph : 0120-4215110

Central Strategy Desk - Kolkata

124 | 1st Floor | 7/1 Lords Sinha Road | Kolkata - 71
Ph : 033-22821500 | M : 93347 14418, 98302 69810