

SGX NIFTY : 8794 ( 23.50 Pt Up)

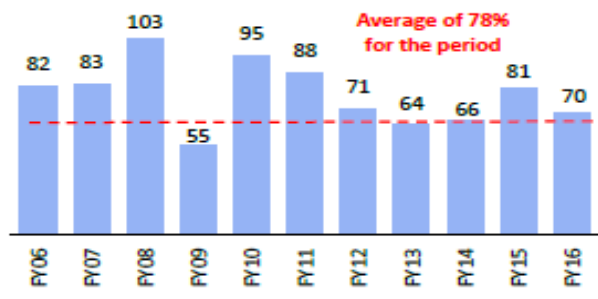
### Quote of the Day

"There's a clarity that comes with great ideas: You can explain why something's a great business, how and why it's cheap, why it's cheap for temporary reasons and how, on a normal basis, it should be trading at a much higher level. You're never sitting there on the 40th page of your spreadsheet, as Buffett would say, agonizing over whether you should buy or not."

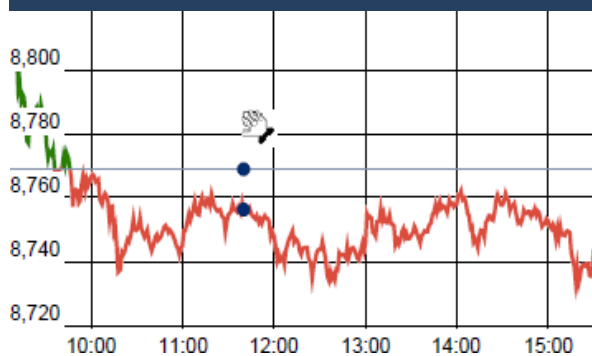
Joel Greenblatt

### Chart of the Day

Indian Mkt Cap to GDP (%)



Index Action Nifty ( 5th Oct 16 )



### Index

Contents	Page	Coverage
News	2	Update
Economic Calendar	3	Update

### Market

Name	Value	Change
Sensex	28,220.98	(113.57)
Nifty	8743.95	(25.20)
DOW	18,538.12	46.16
NASDAQ	5,316.02	26.36
CAC	4,489.95	(13.14)
DAX	10,585.78	(33.38)
FTSE	7,033.25	(41.09)
NIKKEI	16,931.57	112.37
HANG SENG	23,920.08	130.89
EW ALL SHARE	15750.28	(14.17)

### Institutional Turnover

#### FII

Investor	Buy(Cr.)	Sale(Cr.)	Net(Cr.)
05-Oct-16	3449.13	3206.13	243.00
Oct,16	22752.20	20418.33	2333.87
2016	725989.82	699747.62	26242.20

#### DII

Investor	Buy(Cr.)	Sale(Cr.)	Net(Cr.)
05-Oct-16	2079.91	2429.77	(349.86)
Oct,16	11746.17	12927.32	(1181.15)
2016	303990.22	304839.26	(849.04)

### Commodity Price

Commodity/Currencies	Value	
GOLD	29916.00	↓
SILVER	42616.00	↓
CRUDEOIL	47.60	↑
COPPER	322.20	↓
NATURALGAS	201.50	↑
DOLLAR/RS.	66.50	↑
EURO/RS.	74.57	↑
POUND/RS.	84.75	↓

## Market Snapshot

### Top Price Performers

Top Performers 1D	% Change	Top Performers 1W	% Change	Top Performers 1M	% Change
LOTUSEYE	20.00	NEOCORP	54.91	GTLINFRA	130.38
GENESYS	19.95	BOROGLOSS	49.84	RAINBOWPAP	113.30
AARVEEDEN	19.95	SWANENERGY	45.48	NEOCORP	102.62
SWANENERGY	19.95	SATINDLTD	45.30	GTL	89.44
SATINDLTD	18.71	VHL	39.84	FACORALL	87.63

Worst Performers 1D	% Change	Worst Performers 1W	% Change	Worst Performers 1M	% Change
USHERAGRO	(7.78)	ENTEGRA	(17.88)	MANDHANA	(74.07)
SURYACHAKRA	(7.40)	ACROPETAL	(17.39)	ROLATAN	(43.80)
NAKODATEX	(6.25)	USHERAGRO	(17.05)	HINDUJAF0	(39.17)
SURANAIND	(5.88)	ORCHIDCHEM	(15.16)	YBRANTDIGI	(36.64)
BFLYGANDHI	(5.75)	SRSREAL	(12.52)	ACROPETAL	(36.40)

### Top News

- Bajaj Electricals Mgt Guideline** : Company expects the LED segment to account for around half of its lighting business revenue by 2017-18. In FY 2017-18, around 50 per cent of our revenue of lighting would come from LED segment . This year, we are expecting a business of Rs 1,300 crore from the light business, in which around Rs 450 to 500 crore would come from the LED segment . The company had total sales of Rs 1,100 crore from the lighting segment, in which LED contributed around Rs 300 crore. The company provides both indoor and outdoor LED-based lighting solutions.

- Delhi High Court** refused to suspend its single judge order asking Britannia Industries not to use the packaging of its 'Nutri Choice Digestive Zero' biscuits in the present form, but said it would give a decision on the matter soon.

#### • Mgt Int : L&TFIN

To focus on rural, wholesale, housing finance: L&T Fin

>>The Company is focusing on improving its RoE to around 18-19 percent by the year 2020 from around 10 percent reported in FY16.

>>Talking about its plans to sell their de-focused assets business, the co. has already hired investment bankers and would sell a large part of the portfolio in FY17 itself.

>>The de-focussed business include cars, leases, MHCV,SCV, LCV, CE and SME term loans.

#### • Mgt Int : HPCL

Plans to expand Visakhapatnam, Mumbai refineries: HPCL

>>The company is looking at expanding its Visakhapatnam Refinery from 8.33 million tonnes (mt) to 15 mt with a cost of Rs 20,900 crore

>>This expansion will help improve company's gross refining margins to the tune of USD 2-3/bbl.

>>There are plans to expand the Mumbai Refinery too from 7.5 mt to 9.5 mt.

- Alembic Pharma** receives EIR report from USFDA . The Company has received the Establishment Inspection Report from the US health regulator for its formulation facility located at Panelav in Gujarat.

- ONGC Videsh Ltd (OVL)** got government nod to raise its stake in Russia's second biggest oil field of Vankor by 11 percent at an investment of USD 930 million. OVL, which had previously bought 15 percent stake in Vankor from Russian national oil firm Rosneft for USD 1.268 billion, will get additional 3.2 million tons of oil equivalent on top of 4.11 million tons secured earlier. Besides OVL's 26 per cent, a consortium of comprising Oil India (OIL), Indian Oil Corporation (IOC) and Bharat PetroResources (BPRL) acquired 23.9 percent stake in the field at a cost of USD 2.02 billion, giving them 6.56 million tons of oil.

- The Competition Commission has dismissed allegations that **Power Grid Corporation** abused its dominant position with the policy that materials used in construction of transmission lines should be tested at NABL- approved laboratories.

- Colombian CPI** fell to an annual rate of 7.27%, from 8.10% in the preceding month. Analysts had expected Colombian CPI to fall to 7.44% last month.

- Australia's trade balance** rose to a seasonally adjusted - 2.010B, from -2.410B in the preceding month. Analysts had expected Australia's trade balance to rise to -2.300B last month.

- U.S. Crude Oil Inventories** fell to a seasonally adjusted annual rate of -2.976M, from -1.882M in the preceding month. Analysts had expected U.S. Crude Oil Inventories to rise 2.560M last month.

- U.S. Gasoline Inventories** rose to a seasonally adjusted annual rate of 0.222M, from 2.027M in the preceding quarter. Analysts had expected U.S. Gasoline Inventories to rise 0.702M in the last quarter.

- U.S. Factory Orders** fell to a seasonally adjusted 0.2%, from 1.4% in the preceding month whose figure was revised down from 1.9%. Analysts had expected U.S. Factory Orders to fall to -0.1% last month.

Economic Calendar					
Country	Monday 3th Oct 16	Tuesday 4th Oct 16	Wednesday 5th Oct 16	Thursday 6th Oct 16	Friday 7th Oct 16
US	ISM Manufacturing PMI , Final Manufacturing PMI , Construction Spending m/m , ISM Manufacturing Prices , Total Vehicle Sales .	IBD/TIPP Economic Optimism.	ADP Non-Farm Employment Change , Trade Balance , ISM Non-Manufacturing PMI , Factory Orders m/m , Crude Oil Inventories .	Unemployment Claims , Natural Gas Storage , Treasury Currency Report .	Average Hourly Earnings m/m ,Non-Farm Employment Change , Unemployment Rate , Wholesale Inventories m/m.
UK/EURO ZONE	Italian Manufacturing PMI , French Final Manufacturing PMI , German Final Manufacturing PMI , Final Manufacturing PMI , Spanish Manufacturing PMI.	Spanish Unemployment Change ,Construction PMI , PPI m/m.	Manufacturing Production m/m , Services PMI , Industrial Production m/m , Retail Sales m/m , Spanish Services PMI , Italian Services PMI , French Final Services PMI , German Final Services PMI .	German Factory Orders m/m , ECB Monetary Policy Meeting Accounts , French Gov Budget Balance , French Trade Balance.	German Industrial Production m/m ,Halifax HPI m/m , Goods Trade Balance , Italian Industrial Production m/m
INDIA					

**Risk Disclosure & Disclaimer :** This report/message is for the personal information of the authorized recipient and does not construe to be any investment, legal or taxation advice to you. Narnolia Securities Ltd. (Hereinafter referred as NSL) is not soliciting any action based upon it. This report/message is not for public distribution and has been furnished to you solely for your information and should not be reproduced or redistributed to any other person in any form. The report/message is based upon publicly available information, findings of our research wing "East wind" & information that we consider reliable, but we do not represent that it is accurate or complete and we do not provide any express or implied warranty of any kind, and also these are subject to change without notice. The recipients of this report should rely on their own investigations, should use their own judgment for taking any investment decisions keeping in mind that past performance is not necessarily a guide to future performance & that the the value of any investment or income are subject to market and other risks. Further it will be safe to assume that NSL and /or its Group or associate Companies, their Directors, affiliates and/or employees may have interests/ positions, financial or otherwise, individually or otherwise in the recommended/mentioned securities/mutual funds/ model funds and other investment products which may be added or disposed including & other mentioned in this report/message. NSL or any of its affiliates or employees shall not be in any way responsible for any loss or damage that may arise to any person from any action taken based on the above information or inadvertent error in the information contained in this report/message.



(Regn. No. : INP 000004011)

---

## **Narnolia Securities Ltd.**

### **Narnolia Research Lab**

Stellar IT Park | 5th Floor | Office Space No. 6 | Tower-IIInd Plot  
No. C-25 | Sector-62 | Noida | Ph : 0120-4215110

### **Central Strategy Desk - Kolkata**

201 | 2nd Floor | Marble Arch Building | 236B-AJC Bose Road  
Kolkata-700 020 , Ph : 033-40501500 |  
Email : [research@narnolia.com](mailto:research@narnolia.com) | [www.narnolia.com](http://www.narnolia.com)