

SGX NIFTY : 8169 (2.50 Pt Down)

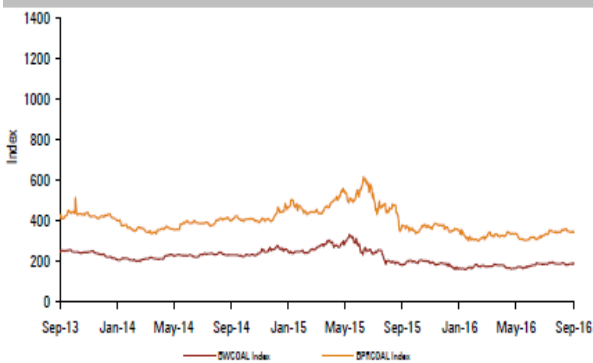
Quote of the Day

"Mathematics is ordinarily considered as producing precise and dependable results; but in the stock market the more elaborate and abstruse the mathematics, the more uncertain and speculative are the conclusions we draw there from."

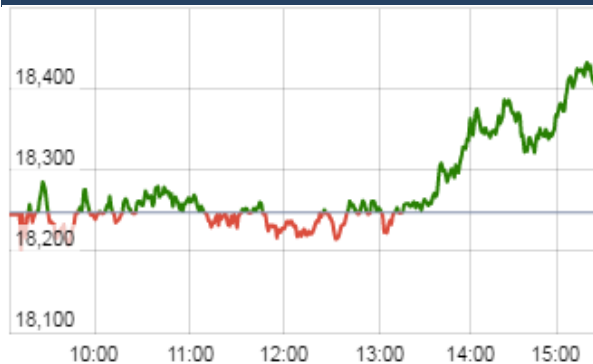
Benjamin Graham

Chart of the Day

India lop trade Balance in China



Index Action Nifty (5th Dec 16)



Index

Contents	Page	Coverage
News	2	Update
Economic Calendar	3	Update

Market

Name	Value	Change
Sensex	26,349.10	118.40
Nifty	8128.75	41.95
DOW	19,152.14	68.94
NASDAQ	5,308.89	53.24
CAC	4,574.32	45.50
DAX	10,684.83	171.48
FTSE	6,746.83	16.11
NIKKEI	18,398.39	123.80
HANG SENG	22,733.38	227.83
EW ALL SHARE	14704.65	80.87

Instituional Turnover

FII

Investor	Buy(Cr.)	Sale(Cr.)	Net(Cr.)
2-Dec-16	3332.96	3650.81	(317.85)
Dec-16	10874.01	11785.00	(910.99)
2016	991139.80	989201.26	1938.54

DII

Investor	Buy(Cr.)	Sale(Cr.)	Net(Cr.)
2-Dec-16	1381.33	1217.69	163.64
Dec-16	4898.16	4915.29	(17.13)
2016	459921.84	431622.64	28299.20

Commodity Price

Commodity/Currencies	Value	
GOLD	28063.00	↓
SILVER	41358.00	↑
CRUDEOIL	51.10	↑
COPPER	406.70	↑
NATURALGAS	248.00	↓
DOLLAR/RS.	68.21	↑
EURO/RS.	73.17	↓
POUND/RS.	86.60	↓

Market Snapshot

Top Price Performers

Top Performers 1D	% Change	Top Performers 1W	% Change	Top Performers 1M	% Change
QUADRANT	19.87	PARRYSUGAR	38.58	TVSELECT	59.91
PARRYSUGAR	15.38	LOTUSEYE	35.28	RSOFTWARE	43.02
AURIONPRO	15.24	BALKRISIND	32.00	PNBGILTS	40.63
SHYAMTEL	13.16	PDPL	23.32	SRSREAL	39.22
OCTANTIND	11.97	SUNDARAM	23.04	PIXTRANS	35.92

Worst Performers 1D	% Change	Worst Performers 1W	% Change	Worst Performers 1M	% Change
BINNY	(9.99)	PRAKASHCON	(16.91)	ENERGYDEV	(60.76)
AZZMES	(8.45)	EDL	(15.43)	PRAKASHCON	(58.96)
CRANESSOFT	(8.43)	BSLIMITED	(14.90)	BINNY	(37.89)
JINDRILL	(8.01)	BINNY	(14.47)	KAKATCEM	(34.08)
PANCHMSTEL	(7.69)	AHMEDFORGE	(14.20)	GODFRYPHLP	(33.95)

Top News

- **Lupin** has received final approval from the US health regulator for its Hydrocodone Bitartrate and Acetaminophen tablets used for providing pain relief.

The tablets are generic version of Allergan Sales LLC's Norco tablets in the same strengths and the product will be launched shortly

Lupin Somerset has received final approval to market its Hydrocodone Bitartrate and Acetaminophen tablets USP, in the strengths of 5 mg/325 mg, 7.5 mg/325 mg and 10 mg/325 mg from the United States Food and Drug Administration (USFDA)

- **Canara Bank** said it proposes to bring down stake in its housing finance subsidiary Can Fin Homes to 30 per cent as part of strategy to exit non-core business. the bank also intends to reduce its stake by 70 per cent in unlisted Canbank Factors Ltd.

- **Mahindra & Mahindra** said its subsidiary has inked a pact to acquire up to 60 per cent stake in Netherlands-based OFD Holding BV for 5 million euros. Mahindra Agri Solutions Ltd (MASL), a wholly-owned subsidiary of the company, has inked a definitive agreement to acquire up to 60 per cent of the equity share capital of OFD Holding BV, a fruit distribution company . Acquisition of up to 60 per cent of the foreign entity would be for a consideration not exceeding 5 million euro (about Rs 36 crore) subject to customary adjustments on closing .

- **Vedanta** said that he wants to meet the country's growing demand and aims to produce 50 percent of India's oil needs. the government has not approached the company with regards to further stake sale in Hindustan Zinc and Balco. Cairn India is looking to invest Rs 30,000 crore in the next 3 years. On the rise in global crude oil prices, Company said that it is unlikely for the prices to move higher and sees it to range bound at around USD 50-60 per barrel.

- **Info Edge (India) Ltd**, which owns leading job listings website Naukri.com, said it has invested an additional Rs 10 million in VCare Technologies, taking its total stake in the company to 14.77 per cent.

- **PTC India** Ltd is the chosen trader for 1000 MW of wind power capacity that will be set up by private developers under a government scheme. The government, through its nominated agency Solar Energy Corp of India Ltd, is currently in the process of inviting private developers to set up solar power units of capacities totalling 1000 MW.

- **Rajesh Exports** has bagged an export order worth Rs 786 crore of designer range of gold and diamond studded jewellery and medallions from UAE. The export order is to be completed by March 2017. The order will be executed at the company's manufacturing facility at Bangalore which is the world's largest gold manufacturing facility

- **Tata Power SED** has won a Rs 200 crore order from the Defence Ministry for supplying one regiment of command post and launcher of Pinaka multi rocket launch system. The order won by Tata Power's Strategic Engineering Division (Tata Power SED) includes supply of 20 launchers and 8 command posts. Pinaka Weapon System is one of the first 'Create in India' product designed and developed by Indian private industry in association with Armament Research and Development Establishment of the DRDO.

- **Australia's current account balance** fell to a seasonally adjusted -11.4B, from -15.9B in the preceding quarter whose figure was revised down from -15.5B. Analysts had expected Australia's current account balance to fall -13.7B in the last quarter.

- **Japan's Average Cash Earnings** rose to a seasonally adjusted 0.1%, from 0.0% in the preceding quarter whose figure was revised down from 0.2%.

- **ISM Non-Manufacturing PMI** rose to a seasonally adjusted annual rate of 57.2, from 54.8 in the preceding quarter. Analysts had expected ISM Non-Manufacturing PMI to rise to 55.4 in the last quarter.

Result Calendar Q2FY17

BSE Code	Company Name	Date	BSE Code	Company Name	Date
500117	DCW	6-Dec-16	512579	GUJNRECOKE	10-Dec-16
540064	FRETAIL	6-Dec-16	515145	HINDNATGLS	10-Dec-16
524602	SHIVMED	6-Dec-16	532799	HUBTOWN	10-Dec-16
532348	SUBEX	6-Dec-16	590072	SUNDRMBRAK	10-Dec-16
500336	SURYAROSNI	6-Dec-16	518091	APCL	12-Dec-16
523261	VENKYS	6-Dec-16	500084	CESC	12-Dec-16
500013	ANSALAPI	7-Dec-16	500093	CROMPGREAV	12-Dec-16
509486	CAPRIHANS	7-Dec-16	532181	GMDCLTD	12-Dec-16
532754	GMRINFRA	7-Dec-16	512237	JAICORPLTD	12-Dec-16
523638	IPRINGLTD	7-Dec-16	511034	JINDRILL	12-Dec-16
524518	KREBSBIO	7-Dec-16	531882	KWALITY	12-Dec-16
539150	PNCINFRA	7-Dec-16	500265	MAHSEAMLES	12-Dec-16
533274	PRESTIGE	7-Dec-16	539126	MEP	12-Dec-16
533288	CLARIS	8-Dec-16	532355	PICTUREHS	12-Dec-16
533264	ESL	8-Dec-16	521070	ALOKTEXT	13-Dec-16
500940	FINOLEXIND	8-Dec-16	532678	BRFL	13-Dec-16
532786	GTOFFSHORE	8-Dec-16	533278	COALINDIA	13-Dec-16
513377	MMTC	8-Dec-16	513599	HINDCOPPER	13-Dec-16
532891	PURVA	8-Dec-16	532899	KSCL	13-Dec-16
500113	SAIL	8-Dec-16	526622	MFLINDIA	13-Dec-16
526807	SEAMECLTD	8-Dec-16	532481	NOIDATOLL	13-Dec-16
533227	AHLEAST	9-Dec-16	532880	OMAXE	13-Dec-16
533160	DBREALTY	9-Dec-16	500338	PRISMCEM	13-Dec-16
523736	DPL	9-Dec-16	533156	VASCONEQ	13-Dec-16
517300	GIPCL	9-Dec-16	515055	ANANTRAJ	14-Dec-16
532286	JINDALSTEL	9-Dec-16	532696	EDUCOMP	14-Dec-16
532940	JKIL	9-Dec-16	526367	GANESHHOUC	14-Dec-16
533207	JPINFRATEC	9-Dec-16	530299	KOTHARIPRO	14-Dec-16
532627	JPOWER	9-Dec-16	533152	MBLINFRA	14-Dec-16
532778	LITL	9-Dec-16	500108	MTNL	14-Dec-16
513446	MONNETISPA	9-Dec-16	506022	PRAKASH	14-Dec-16
513683	NLCINDIA	9-Dec-16	500368	RUCHISOYA	14-Dec-16
590086	ORISSAMINE	9-Dec-16	513414	SMPL	14-Dec-16
500366	ROLTA	9-Dec-16	517224	SUJANAUNI	14-Dec-16
532877	SIMPLEX	9-Dec-16	509243	TVSSRICHAK	14-Dec-16
533206	SJVN	9-Dec-16	532746	UNITY	14-Dec-16
534756	TARAJEWELS	9-Dec-16	532313	MAHLIFE	30-Jan-17
517146	USHAMART	9-Dec-16	524038	VENLONENT	31-Jan-17
500128	ELECTCAST	10-Dec-16			

Earning Estimate Q2FY17

BSE CODE	NSE CODE	Sales Rs Cr	Sales YoY	Pat Rs Cr	PAT YoY
500459	PGHH	706.30	18.00	102.70	47.10
500093	CROMPGREAV	1363.00	(39.90)	29.30	LP
500113	SAIL	9657.90	4.30	(1219.00)	Loss
533274	PRESTIGE	1094.20	(9.10)	169.70	68.50
533278	COALINDIA	1618.99	(4.50)	127.61	(49.30)

Economic Calendar					
Country	Monday 5th Dec 16	Tuesday 6th Dec 16	Wednesday 7th Dec 16	Thursday 8th Dec 16	Friday 9th Dec 16
US	ISM Non-Manufacturing PMI , Labor Market Conditions Index m/m , Final Services PMI.	Revised Nonfarm Productivity q/q , Trade Balance , Factory Orders m/m , IBD/TIPP Economic Optimism.	Crude Oil Inventories , 10-y Bond Auction , Consumer Credit m/m.	Unemployment Claims , JOLTS Job Openings , Natural Gas Storage , 30-y Bond Auction .	Prelim UoM Consumer Sentiment , Prelim UoM Inflation Expectations , Wholesale Inventories m/m.
UK/EURO ZONE	Services PMI , Retail Sales m/m , Spanish Services PMI , Italian Services PMI , French Final Services PMI , German Final Services PMI .	German Factory Orders m/m ,French Gov Budget Balance , Halifax HPI m/m , Retail PMI , Revised GDP q/q.	French Final Non-Farm Payrolls q/q , German Industrial Production m/m, Manufacturing Production m/m , FPC Meeting Minutes , Industrial Production m/m	French Industrial Production m/m , Italian Industrial Production m/m , Goods Trade Balance , Minimum Bid Rate , ECB Press Conference.	German Trade Balance ,French 10-y Bond Auction , German 10-y Bond Auction .
INDIA					

Risk Disclosure & Disclaimer : This report/message is for the personal information of the authorized recipient and does not construe to be any investment, legal or taxation advice to you. Narnolia Securities Ltd. (Hereinafter referred as NSL) is not soliciting any action based upon it. This report/message is not for public distribution and has been furnished to you solely for your information and should not be reproduced or redistributed to any other person in any form. The report/message is based upon publicly available information, findings of our research wing "East wind" & information that we consider reliable, but we do not represent that it is accurate or complete and we do not provide any express or implied warranty of any kind, and also these are subject to change without notice. The recipients of this report should rely on their own investigations, should use their own judgment for taking any investment decisions keeping in mind that past performance is not necessarily a guide to future performance & that the the value of any investment or income are subject to market and other risks. Further it will be safe to assume that NSL and /or its Group or associate Companies, their Directors, affiliates and/or employees may have interests/ positions, financial or otherwise, individually or otherwise in the recommended/mentioned securities/mutual funds/ model funds and other investment products which may be added or disposed including & other mentioned in this report/message. NSL or any of its affiliates or employees shall not be in any way responsible for any loss or damage that may arise to any person from any action taken based on the above information or inadvertent error in the information contained in this report/message.

Narnolia

Advance Strategy · Simple Solutions

(Regn. No. : INP 000004011)

Narnolia Securities Ltd.

Narnolia Research Lab

Stellar IT Park | 5th Floor | Office Space No. 6 | Tower-IIInd Plot
No. C-25 | Sector-62 | Noida | Ph : 0120-4215110

Central Strategy Desk - Kolkata

201 | 2nd Floor | Marble Arch Building | 236B-AJC Bose Road
Kolkata-700 020 , Ph : 033-40501500 |
Email : research@narnolia.com | www.narnolia.com