

SGX NIFTY : 7656 ( 78 Pt Down)

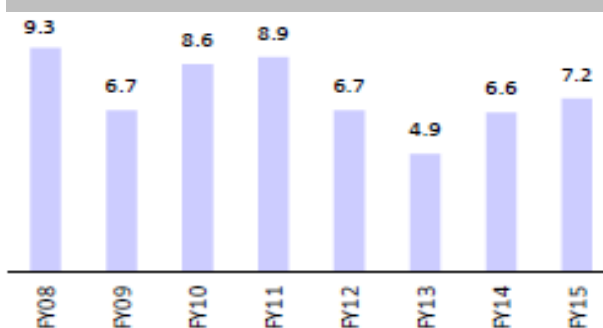
**Quote of the Day**

"If I was running \$1 million today, or \$10 million for that matter, I'd be fully invested. Anyone who says that size does not hurt investment performance is selling. The highest rates of return I've ever achieved were in the 1950s. I killed the Dow. You ought to see the numbers. But I was investing peanuts then. It's a huge structural advantage not to have a lot of money. I think I could make you 50% a year on \$1 million. No, I know I could. I guarantee that."

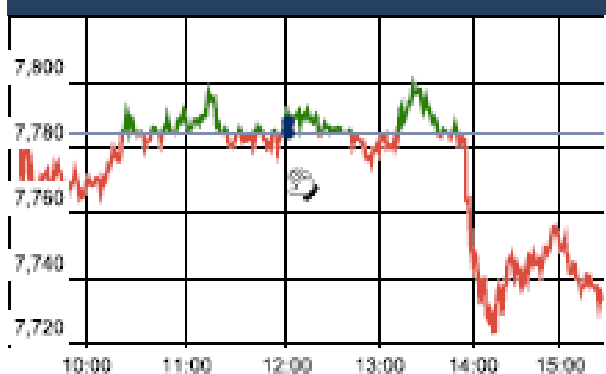
Warren Buffett

**Chart of the Day**

**GDP Growth**



**Index Action Nifty ( 6th Jan 16 )**



**Index**

Contents	Page	Coverage
News	2	Update
Economic Calendar	3	Update

**Market**

Name	Value	Change
Sensex	25,406.33	(174.01)
Nifty	7741.00	(43.65)
DOW	17,148.94	-276.09
NASDAQ	4,835.77	-55.66
CAC	4,480.77	-54.16
DAX	10,214.08	-96.02
FTSE	6,073.38	-63.38
NIKKEI	17,867.04	(324.28)
HANG SENG	20,384.61	(596.20)
EW ALL SHARE	13885.58	(219.39)

**Instituional Turnover**

**FII**

Investor	Buy(Cr.)	Sale(Cr.)	Net(Cr.)
06-Jan-16	4452.42	4694.90	(242.48)
Jan,16	897125.63	904371.51	(7245.88)
2016	361428.89	310810.88	50618.01

**DII**

Investor	Buy(Cr.)	Sale(Cr.)	Net(Cr.)
06-Jan-16	2091.12	1514.55	576.57
Jan,16	75168.28	85241.20	(1033.94)
2016	35130.57	26463.52	8667.05

**Commodity Price**

Commodity/Currencies	Value	
GOLD	25765.00	↑
SILVER	33800.00	↑
CRUDEOIL	37.08	↓
COPPER	311.00	↓
NATURALGAS	151.60	↑
DOLLAR/RS.	66.82	↑
EURO/RS.	72.27	↑
POUND/RS.	97.84	↑

## Market Snapshot

### Top Price Performers

Top Performers 1D	% Change	Top Performers 1W	% Change	Top Performers 1M	% Change
PDPL	19.98	MEGASOFT	74.80	EKC	150.51
RAJTV	19.98	SUDAR	72.56	DOLATINVES	122.16
JAIBALAJI	19.91	SURANACORP	70.71	SPENTEX	113.99
WESTE	19.73	BSELINFRA	65.32	MEGASOFT	108.21
NUTEK	19.44	PDPL	58.72	INFOMEDIA	104.34

Worst Performers 1D	% Change	Worst Performers 1W	% Change	Worst Performers 1M	% Change
SUJANATOW	(11.04)	CADILAHC	(17.10)	SHRENUJ	(42.42)
VALECHAENG	(10.18)	RMMIL	(14.84)	OUTCTYTRVL	(32.46)
INFODRIVE	(10.00)	GEINDSYS	(14.15)	SANWARIA	(21.36)
GEINDSYS	(9.70)	RESTILE	(10.96)	TREEHOUSE	(19.98)
SMPL	(9.65)	CURATECH	(10.33)	KGNIND	(19.20)

## Top News

- Titan and global luxury firm Maison Montblanc**, which have formed a joint venture to open the latter's retail outlets in India, will invest around Rs 250 crore in the next five years to take the store count to 50. Company would probably have 15 to 20 stores for the JV and there is simultaneous demand in tier II places as well. The plan is to first establish in the first eight cities. The boutique sells writing instruments priced between Rs 22,000 and Rs 6.50 lakh and watches ranging between Rs 1.15 lakh and Rs 7.50 lakh.
- L&T Construction** secured a contract of Rs 1,276 crore in the buildings and factories business, the company said in a statement. L&T Oman, a subsidiary of L&T, has bagged an order worth USD 93.1 million (around 614.46 crore) to construct a regional airport in the Sultanate of Oman. The scope of works includes construction of passenger terminal building, ATC complex, cargo and other service buildings including mechanical, electrical and plumbing (MEP) works, special systems and external works.
- ICICI Bank**, the country's largest private sector lender picked up 19.58 lakh shares of United Breweries Limited for a little over Rs 186 crore through an open market transaction. The shares were offloaded by United Breweries (Holdings) Ltd, a promoter of United Breweries.
- Corporation Bank** said it will buy 4 percent stake in LIC Nomura Mutual Fund Asset Management Company from existing shareholders for Rs 5.67 crore. The bank is going to acquire 4 percent shareholding from the existing shareholder namely Nomura Asset Management Strategic Investments PTE Limited of LIC Nomura Mutual Fund Asset Management Company Ltd,
- Lupin** has launched its Tri-Lo-Marzia tablets, an oral contraceptive drug, in the US market after getting approval from the American health regulator.
- Deepak Nitrite Ltd** has raised Rs 83.30 crore from institutional investors through private placement of shares. Deepak Nitrite approved the allotment of 1,17,50,000 shares of Rs 2 each at Rs 70.90 apiece. With the allotment of these shares, the company will raise Rs 83.30 crore.
- NBCC** said it has bagged contracts worth Rs 8,523 crore in last month. The company said works worth Rs 8,195 crore were related to project management consultancy (PMC) and projects worth Rs 328 crore were related to the engineering, procurement and construction (EPC) business.
- U.S. Gasoline Inventories** rose to a seasonally adjusted annual rate of 10.576M, from 0.925M in the preceding quarter. Analysts had expected U.S. Gasoline Inventories to rise 2.308M in the last quarter.
- U.S. Crude Oil Inventories fell** to a seasonally adjusted annual rate of -5.085M, from 2.629M in the preceding month. Analysts had expected U.S. Crude Oil Inventories to rise 0.439M last month.
- U.S. Census Bureau said factory orders** decreased by a seasonally adjusted 0.2% in November, matching forecasts. Factory orders rose 1.3% in October, whose figure was revised from a previously reported gain of 1.5%.
- Canadian trade balance** rose to a seasonally adjusted -1.99B, from -2.49B in the preceding month whose figure was revised up from -2.76B. Analysts had expected Canadian trade balance to rise to -2.60B last month.
- Eurostat** said that Euro zone PPI fell to a seasonally adjusted -0.2%, from -0.3% in the preceding month. Analysts had expected Euro zone PPI to fall -0.2% last month.

### Economic Calendar

Country	Monday Jan 16	Tuesday 5th Jan 16	Wednesday 6th Jan 16	Thursday 7th Jan 16	Friday 8th Jan 16
<b>US</b>	ISM Manufacturing PMI , Construction Spending m/m .	Total Vehicle Sales .	ADP Non-Farm Employment Change ,Trade Balance , ISM Non-Manufacturing PMI , FOMC Meeting Minutes .	Unemployment Claims.	Unemployment Rate , Non-Farm Employment Change , Unemployment Rate .
<b>UK/EURO ZONE</b>	et Lending to Individuals m/m , Manufacturing PMI , Spanish Manufacturing PMI .	Spanish Unemployment Change , Construction PMI ,	Services PMI , German Final Services PMI , Halifax HPI m/m .	Unemployment Rate, German Retail Sales m/m, German Factory Orders m/m,	Trade Balance .
<b>INDIA</b>	Auto No		HSBC Service PMI No .		

## Narnolia Securities Ltd.

#### Narnolia Research Lab

Stellar IT Park | 5th Floor | Office Space No. 6 | Tower-IIInd Plot No. C-25 | Sector-62 | Noida | Ph : 0120-4215110

#### Central Strategy Desk - Kolkata

124 | 1st Floor | 7/1 Lords Sinha Road | Kolkata - 71  
Ph : 033-22821500 | M : 93347 14418, 98302 69810