

SGX NIFTY : 8273 (39 Pt Up)

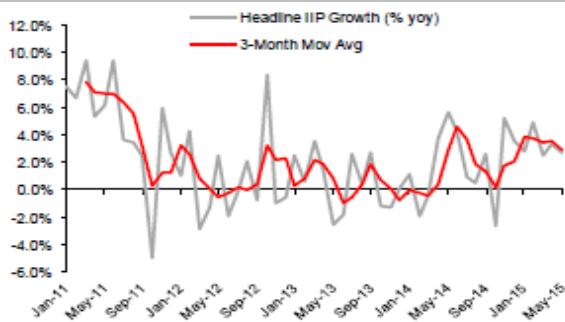
Quote of the Day

We've long felt that the only value of stock forecasters is to make fortune tellers look good. Even now, Charlie and I continue to believe that short-term market forecasts are poison and should be kept locked up in a safe place, away from children and also from grown-ups who behave in the market like children."

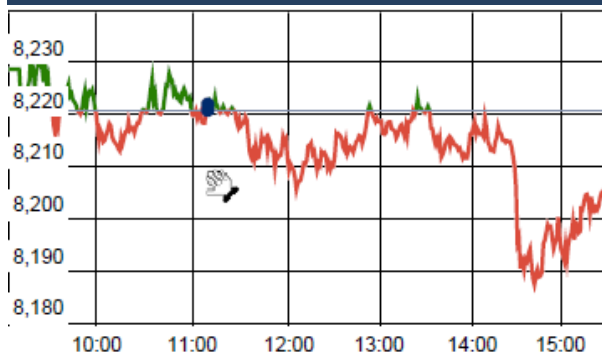
Warren Buffett

Chart of the Day

IIP Trend



Index Action Nifty (6th June 16)



Index

Contents	Page	Coverage
News	2	Update
Economic Calendar	3	Update

Market

Name	Value	Change
Sensex	2,67,778.00	(65.58)
Nifty	8201.05	(19.75)
DOW	17,807.06	(31.60)
NASDAQ	4,968.17	26.19
CAC	4,423.38	1.60
DAX	10,121.23	17.82
FTSE	6,273.40	63.77
NIKKEI	16,639.35	59.82
HANG SENG	21,216.17	186.05
EW ALL SHARE	13954.53	(25.11)

Instituional Turnover

FII

Investor	Buy(Cr.)	Sale(Cr.)	Net(Cr.)
06-Jun-16	5016.42	4988.12	28.30
June,16	77250.13	74223.47	3026.66
2016	974375.76	978594.98	(4219.22)

DII

Investor	Buy(Cr.)	Sale(Cr.)	Net(Cr.)
06-Jun-16	1288.99	1519.62	(230.63)
June,16	32159.62	33309.48	(1149.86)
2016	393588.51	344120.36	49468.15

Commodity Price

Commodity/Currencies	Value	
GOLD	29450.00	↑
SILVER	39142.00	↑
CRUDEOIL	48.86	↑
COPPER	313.60	↓
NATURALGAS	163.00	↑
DOLLAR/RS.	66.96	↓
EURO/RS.	75.88	↑
POUND/RS.	96.67	↑

Market Snapshot

Top Price Performers

Top Performers 1D	% Change	Top Performers 1W	% Change	Top Performers 1M	% Change
ALKALI	19.98	BILPOWER	69.44	TATAMETALI	142.05
DHARSUGAR	19.91	DHARSUGAR	66.57	PRIMESECU	86.92
THIRUSUGAR	19.57	THIRUSUGAR	47.88	GOKEX	68.42
BILPOWER	18.45	GOKEX	41.44	DHARSUGAR	60.86
VLSFINANCE	16.65	SHIVTEX	38.06	BILPOWER	58.44

Worst Performers 1D	% Change	Worst Performers 1W	% Change	Worst Performers 1M	% Change
CALSREF	(14.29)	NEOCORP	(29.32)	JINDALPHOT	(53.57)
RAIREKMOH	(12.52)	VIVIDHA	(26.47)	NEOCORP	(43.60)
TREEHOUSE	(9.77)	ANGIND	(21.51)	WINSOMEDJ	(42.67)
VIVIDHA	(9.71)	ZICOM	(19.66)	PRAKASHSTL	(42.60)
FACORALL	(9.00)	SATRAPROP	(18.28)	INFODRIVE	(42.11)

Top News

- **Crompton Greaves Consumer Electricals Ltd (CGCEL)** said its shareholders have approved raising up to Rs 700 crore through the issuance of non-convertible debentures (NCDs) on private placement basis. Avantha Group had sold its entire holding of 34.37 percent in demerged consumer products business of Crompton Greaves to private equity investors Advent International and Temasek for Rs 2,000 crore

- **Yes Bank** is looking to raise USD 800 million via qualified institutional placements (QIP), sources say. The bank recently got approval from Cabinet Committee on Economic Affairs to raise foreign holding to 74 percent. The bank is likely to raise USD 200 million via a Greenshoe option. The Greenshoe option, approved by SEBI in 2003, allows companies to intervene in market with a motive to stabilise share prices during 30-days period immediately after an IPO.

- **ICICI Bank** plans to raise Rs 25,000 crore in tranches by way of various instruments including bonds. During the AGM, the bank will seek shareholders nod to raise up to Rs 25,000 crore. The capital will be raised over a period of one year from the date of passing of the resolution.

- **Sun Pharma** 's Managing Director, may be one of the bidders for auction of new oil and gas fields kickstarted today by Minister of Petroleum and Natural Gas . Shanghvi is venturing into oil and gas in his personal capacity and his company - Sun Pharma - will remain as a separate entity.

- **Larsen & Toubro (L&T)** and Al Balagh Trading & Contracting's joint venture (JV) has been appointed the main contractor to build the 40,000-seater Al Rayyan stadium in Qatar. The proposed stadium will host games up to the quarterfinal of the FIFA World Cup in 2022 to be played in the Persian Gulf nation.

- **Prism Cement** said it will acquire 15.23 percent stake in BLA power Pvt Ltd for Rs 21 crore, a move that will reduce the firm's production costs. Prism Cement shall enter into a Power Supply Agreement (PSA) with BLA Power for the purchase and consumption of 25 MW of RTC (Round The Clock) power

- **BHEL** announced the commissioning of all the 3 supercritical units of the 1980 MW coal-based Lalitpur Super Thermal Power Project in Uttar Pradesh within a span of just 85 days. Located in Lalitpur, Bundelkhand district, the 3x660 MW Lalitpur STPP has been developed by Lalitpur Power Generation Company Ltd . This has been achieved as a result of enhanced focus on project execution by way of innovative erection techniques and meticulous project management

- **Karnataka** will begin the auction process for 14 iron ore mines by August this year after it was delayed on account of issues related to stamp duty. The minister said that auction was delayed due to issues relating to the applicable stamp duty

- **Russian CPI** rose to a seasonally adjusted annual rate of 0.4%, from 0.4% in the preceding month. Analysts had expected Russian CPI to rise 0.4% last month.

- **The Melbourne Institute monthly inflation gauge** fell 0.2 percent in May, from April when it rose 0.1 percent. That slowed the annual inflation rate to 1.0 percent, from 1.5 percent, driving it further below the Reserve Bank of Australia's (RBA) 2 percent to 3 percent target band.

- **Philippine annual inflation forecast** of 1.4 percent annual inflation for May, well inside the central bank's projection of 1.1-1.9 percent for the month. Inflation has stayed below the central bank's 2-4 percent target for a year on the back of low fuel prices and imports of the national staple rice

- **U.S. Department of Labor said the unemployment rate** fell to a seasonally adjusted 4.7%, from 5.0% in the preceding month . Analysts had expected the U.S. unemployment rate to fall to 4.9% last month.

- **Canadian trade balance** rose to a seasonally adjusted -2.94B, from -3.18B in the preceding month whose figure was revised

Economic Calendar					
Country	Monday 6th June 16	Tuesday 7th June 16	Wednesday 8th June 16	Thursday 9th June 16	Friday 10th June 16
US	Fed Chair Yellen Speaks , Labor Market Conditions Index m/m.	Revised Nonfarm Productivity q/q , Revised Unit Labor Costs q/q , IBD/TIPP Economic Optimism.	Crude Oil Inventories .	Unemployment Claims ,Wholesale Inventories m/m.	
UK/EURO ZONE	Retail PMI , Sentix Investor Confidence.	German Industrial Production m/m , French Gov Budget Balance , Revised GDP q/q , Halifax HPI m/m .	Manufacturing Production m/m , Industrial Production m/m , NIESR GDP Estimate .	ECB President Draghi Speaks , Italian Quarterly Unemployment Rate , Goods Trade Balance .	German Final CPI m/m , German WPI m/m , French Industrial Production m/m .
INDIA		RBI Credit Policy			



(Regn. No. : INP 000004011)

Narnolia Securities Ltd.

Narnolia Research Lab

Stellar IT Park | 5th Floor | Office Space No. 6 | Tower-IIInd Plot
No. C-25 | Sector-62 | Noida | Ph : 0120-4215110

Narnolia Securities Ltd.

201 | 2nd Floor | Marble Arch Building | 236B-AJC Bose Road Kolkata-
700 020 Ph : 033-40501500
Email : narnolia@narnolia.com website :www.narnolia.com