

SGX NIFTY : 8350 (54 Pt Up)

Quote of the Day

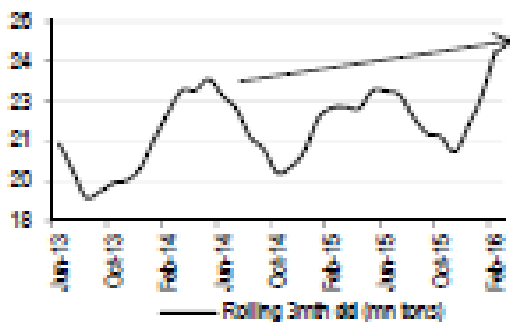
"The individual investor should act consistently as an investor and not as a speculator. This means that he should be able to justify every purchase he makes and each price he pays by impersonal, objective reasoning that satisfies him that he is getting more than his money's worth for his purchase."

Benjamin Graham

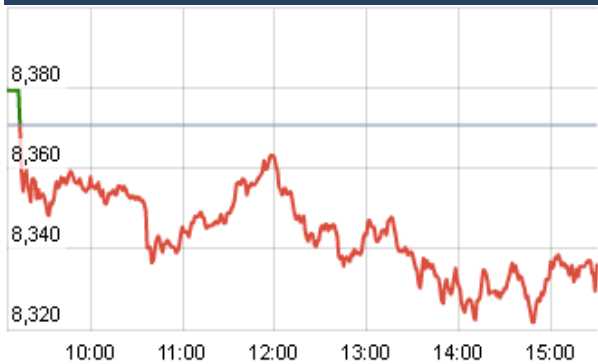
Chart of the Day

India Cement Demand Trend

India cement demand trend



Index Action Nifty (5th July 16)



Index

Contents	Page	Coverage
News	2	Update
Economic Calendar	3	Update

Market

Name	Value	Change
Sensex	27,166.87	(111.89)
Nifty	8335.95	(34.75)
DOW	17,918.62	78.00
NASDAQ	4,859.16	36.26
CAC	4,085.35	(78.12)
DAX	9,373.26	(159.35)
FTSE	6,463.59	(81.78)
NIKKEI	15,355.12	(23.57)
HANG SENG	20,606.68	111.39
EW ALL SHARE	14597.16	(27.73)

Instituional Turnover

FII

Investor	Buy(Cr.)	Sale(Cr.)	Net(Cr.)
05-Jul-16	3237.69	2972.06	265.63
June,16	78213.93	74356.63	3857.30
2016	329354.34	327507.73	1846.61

DII

Investor	Buy(Cr.)	Sale(Cr.)	Net(Cr.)
05-Jul-16	1214.93	1662.41	(447.48)
June,16	27319.73	29703.86	(2384.13)
2016	140810.85	135636.11	5174.74

Commodity Price

Commodity/Currencies	Value	
GOLD	32116.00	↑
SILVER	47788.00	↑
CRUDEOIL	47.79	↑
COPPER	324.35	↓
NATURALGAS	188.00	↓
DOLLAR/RS.	67.46	↑
EURO/RS.	74.82	↑
POUND/RS.	87.24	↑

Market Snapshot

Top Price Performers

Top Performers 1D	% Change	Top Performers 1W	% Change	Top Performers 1M	% Change
JPASSOCIAT	27.97	REIAGROLTD	52.63	KEMROCK	126.68
SHARRESLTD	20.00	JPASSOCIAT	48.40	RANASUG	123.54
SURANAT&P	20.00	VIKASWSP	44.03	SUPREMETEX	116.29
JINDALPHOT	19.98	MLKFOOD	39.57	EMAMIINFRA	104.34
HANUNG	19.93	PEERABASAN	37.97	EUROCERA	104.32

Worst Performers 1D	% Change	Worst Performers 1W	% Change	Worst Performers 1M	% Change
LKPMERFIN	(25.57)	LKPMERFIN	(22.53)	MANDHANA	(67.76)
SEINV	(12.34)	MANDHANA	(18.45)	PRAKASHSTL	(38.87)
COROMANDEL	(11.59)	SHRENUJ	(18.33)	RAIREKMOH	(38.12)
PROVOGE	(8.86)	RISAINTL	(18.06)	GEEFC	(33.88)
STEERINTER	(6.64)	RAINBOWPAP	(17.99)	RISAINTL	(30.22)

Top News

• Mgt Int : BAJAJFINSERV

>>After a slowdown in the last four years, the insurance industry is anticipating a revival to double-digit growth.

>>As banks are slowly opening up their network, in the next couple of years, Mgt expect growth to be in the mid-teens and thereafter it can accelerate.

>>The big challenge is how to distribute products in a viable manner

>>As our per capita GDP improves, there are huge opportunities for various kinds of insurance products.

• Alembic Pharma gets tentative nod from USFDA for Febuxostat

>>The company has received tentative approval from the US Food and Drug Administration (USFDA) for its Abbreviated New Drug Application (ANDA) for Febuxostat tablets, 40 mg and 80 mg.

>>The tablets, indicated for chronic management of hyperuricemia in patients of gout, has an estimated market size of USD 430 million for 12 months to December 2015.

• **Sharda Cropchem** is confident of a 15-20 percent CAGR growth over the next three years assuming constant currency and stable conditions.

The company is engaged in the marketing and distribution of a wide range of formulations and generic active ingredients globally. Its core strength lies in identifying generic molecules, preparing dossiers, seeking registrations, marketing and distributing formulations or generic active ingredients in fungicide, herbicide and insecticide segments. Company said for the current fiscal year the company would do about 200-250 registrations this year. So far, they already have around 1725 registration in the bag, with around 800 registrations in the pipeline

• **JSW Energy** has got fair trade regulator CCI's approval to acquire 1,000 MW power plant in Chhattisgarh from Jindal Steel and Power Ltd (JSPL). Under the deal announced in May, the Sajjan Jindal-led firm was to purchase the power plant in Raigarh for Rs 6,500 crore with certain conditions.

• **IIFL Holdings** will seek shareholders' nod to raise Rs 2,000 crore through issuance of non-convertible debentures on private placement basis to shore up long-term capital.

• The 90-day long labour issues at Technocraft Industries ' Thane plant has finally been resolved . The Thane plant is a coal based, 15 mega watt thermal captive power plant . expects the scaffolding business to do well in FY17 as well. The company eyes expansion and increase production by 30 percent in its scaffolding business in FY17 Company maintained that the operating margins in first quarter of FY17 may see a slight impact due to Thane power plant shutdown.

• **NBCC** secures projects worth Rs 587 cr in June . NBCC, under the administrative control of Ministry of Urban Development, is present in three main segments — Project Management Consultancy (PMC), Real Estate Development and EPC Contracting.

• **U.S.** the Institute for Supply Management (ISM) said its index of non-manufacturing activity rose to 56.5 from 52.9 the month before. The reading was above expectations of 53.3 from a Reuters poll of 62 economists and was the highest reading since November.

• **Canadian trade balance rose** to a seasonally adjusted -3.28B, from -3.32B in the preceding month whose figure was revised down from -2.94B. Analysts had expected Canadian trade balance to rise to -2.70B last month.

• **Spanish Industrial Production** fell to 1.0%, from 2.7% in the preceding month. Analysts had expected Spanish Industrial Production to fall to 1.8% last month.

• **German factory orders** remained unchanged at a seasonally adjusted 0.0%, from -1.9% in the preceding month whose figure was revised up from -2.0%. Analysts had expected German factory orders to rise 1.0% last month.

• **U.S. the Commerce Department said orders** fell a seasonally adjusted 1.0% after a gain of 1.8% the preceding month. The previous month's figure was revised down from 1.9%.

Economic Calendar

Country	Monday 4th July 16	Tuesday 5th July 16	Wednesday 6th July 16	Thursday 7th July 16	Friday 8th July 16
US	Factory Orders m/m.	Final Services PMI , IBD/TIPP Economic Optimism .	ADP Non-Farm Employment Change , Trade Balance, FOMC Meeting Minutes .	Unemployment Claims , JOLTS Job Openings ,Crude Oil Inventories .	Average Hourly Earnings m/m , Non-Farm Employment Change ,Unemployment Rate , Consumer Credit m/m More .
UK/EURO ZONE	Spanish Unemployment Change ,Sentix Investor Confidence , Construction PMI , PPI m/m .	Spanish Services PMI , Italian Services PMI , French Final Services PMI , German Final Services PMI , Services PMI , BOE Financial Stability Report .	French Gov Budget Balance , French Trade Balance , Housing Equity Withdrawal q/q .	German Industrial Production m/m ,Halifax HPI m/m , Manufacturing Production m/m , FPC Meeting Minutes , Industrial Production m/m .	German Trade Balance ,Italian Industrial Production m/m , Goods Trade Balance , French 10- y Bond Auction , 10-y Bond Auction .
INDIA					



(Regn. No. : INP 000004011)

Narnolia Securities Ltd.

Narnolia Research Lab

Stellar IT Park | 5th Floor | Office Space No. 6 | Tower-IIInd Plot
No. C-25 | Sector-62 | Noida | Ph : 0120-4215110

Narnolia Securities Ltd.

201 | 2nd Floor | Marble Arch Building | 236B -AJC Bose Road Kolkata-
700 020 Ph : 033-40501500
Email : narnolia@narnolia.com website :www.narnolia.com