

SGX NIFTY : 7659.60 (1.50 Pt Up)

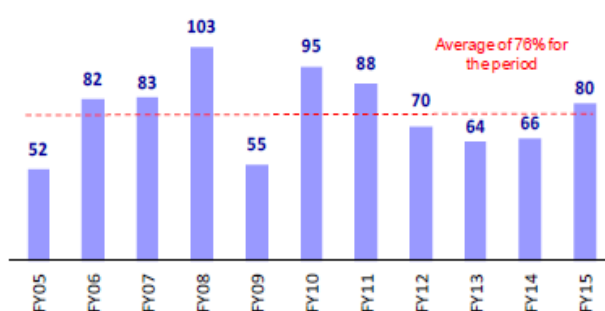
Quote of the Day

"Price fluctuations have only one significant meaning for the true investor. They provide him with an opportunity to buy wisely when prices fall sharply and to sell wisely when they advance a great deal. At other times he will do better if he forgets about the stock market and pays attention to...the operating results of his companies."

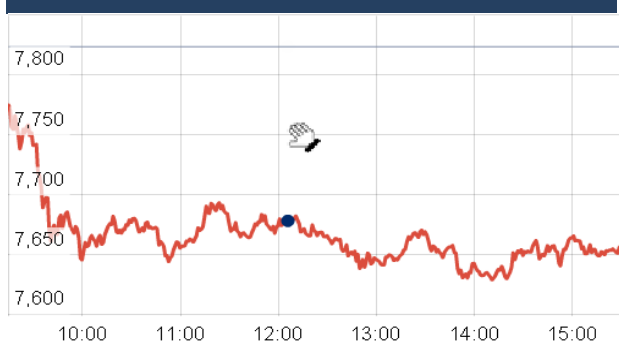
Ben Graham

Chart of the Day

Trend in Indian Mkt Cap to GDP (%)



Index Action Nifty (4th Sept 15)



Index

Contents	Page	Coverage
News	2	Update
Economic Calendar	3	Update

Market

Name	Value	Change
Sensex	25,201.90	(562.88)
Nifty	7655.05	(167.95)
DOW	17,545.18	67.78
NASDAQ	4,683.92	(49.38)
CAC	4,523.08	(130.47)
DAX	10,038.04	(279.80)
FTSE	6,042.92	(151.48)
NIKKIE	17,864.19	72.03
HANG SENG	20,847.53	6.92
EW ALL SHARE	13350.59	(267.01)

Instituional Turnover

FII

Investor	Buy(Cr.)	Sale(Cr.)	Net(Cr.)
04-Sep-15	3494.61	4781.73	(1287.12)
Sept,15	15701.05	19631.22	(3930.17)
2015	837658.40	838761.53	(1103.13)

DII

Investor	Buy(Cr.)	Sale(Cr.)	Net(Cr.)
04-Sep-15	2760.00	1631.30	1128.70
Sept,15	9808.08	6276.83	3531.25
2015	336106.40	290624.19	45482.21

Commodity Price

Commodity/Currencies	Value	
GOLD	26352.00	↑
SILVER	35388.00	↓
CRUDEOIL	42.31	↓
COPPER	347.50	↓
NATURALGAS	178.40	↓
DOLLAR/RS.	66.46	↑
EURO/RS.	74.35	↑
POUND/RS.	101.39	↑

Market Snapshot

Top Price Performers

Top Performers 1D	% Change	Top Performers 1W	% Change	Top Performers 1M	% Change
BIRLACOT	25.00	STEERINTER	37.78	ORISSASP	56.99
GEMINI	13.64	PRITI	25.38	JUBLINDS	56.35
DHARSUGAR	11.22	DISHMAN	20.94	DSINVEST	44.66
XLENERGY	11.20	JINDRILL	20.42	ENERGYDEV	37.57
QUADRANT	10.51	XLENERGY	19.31	SANCIA	31.58

Worst Price Performers

Worst Performers 1D	% Change	Worst Performers 1W	% Change	Worst Performers 1M	% Change
SEZAL	(13.36)	AMTEKAUTO	(38.44)	AMTEKAUTO	(80.09)
NCC	(12.23)	DECNGOLD	(36.77)	AHMEDFORGE	(65.90)
TUNITEX	(11.90)	NTCIND	(28.50)	AMTEKINDIA	(62.01)
FINANTECH	(11.55)	SURANAT&P	(25.54)	JYOTISTRUC	(56.10)
WEIZFOREX	(11.42)	JMTAUTOLD	(22.50)	KGL	(56.03)

Top News

- **Fund Action** : International Synthfabsp Ltd sold 1,363,909 shares of Welspun Enterprises at Rs 57.48 on the BSE. Also Welspun Infra Developers Private Limited sold 2,127,101 shares of Welspun Enterprises at Rs 57.77 on the BSE.

Crest Logistics and Engineers Pivate Limited sold 600,000 shares of Saregama India at Rs 356.93 on the BSE. Also, Gobtech Avisory Srvices Limited sold 613,250 shares of Saregama India at Rs 352 on the NSE. Goldman Sachs Investments Mauritius (I) Ltd sold 1,646,420 shares of Amtek Auto at Rs 27.64 on the NSE.

- **ONGC** has bought a 15 per cent stake in Russia's second- largest oil field from Rosneft for about \$1.35 billion. ONGC Videsh Ltd, the overseas investment arm of the state explorer, signed agreements in Moscow to buy 15 per cent stake in Vankorneft, the developer of the Vankor oil and gas condensate field in Turukhansky district of Krasnoyarsk Territory in Russia.

- **Lanco Infratech** will seek shareholders' approval to invest up to Rs 6,000 crore via securities in companies, including its subsidiaries, to meet its capital commitments. The firm had made an investment in other companies through securities worth Rs10,959.25 crore, which includes investment in its wholly-owned subsidiaries, subsidiaries and associate companies,

- **Rajesh Exports** has bagged an export order worth Rs 1,123 crore from Singapore for gold and diamond studded jewellery. In June The company had got an export order worth Rs 1,302 crore from an UAE-based company for gold and diamond studded jewellery. This order has to be completed this month. It has gold jewellery manufacturing facility at Bengaluru, spread over 12 acres of land, with a capacity to process 250 tonnes of gold into jewellery.

- **ABB** has surpassed its installed base of 2 GW of solar inverter capacity in India. ABB has become the first company in the country to surpass an installed base of 2 GW of solar inverter capacity, doubling the 1 GW installed base it had in March 2015 . The additional 1 GW came from multiple orders from leading solar power developers and from selling components to solar EPCs

- **Dr Reddy 's Laboratories** is recalling over 55,000 bottles of Amlodipine besylate and Atorvastatin calcium tablets, used to treat high blood pressure and cholesterol related diseases, in the US market . The tablets being recalled by the company have been manufactured at its Bachupally facility, near Hyderabad and distributed in the US by its subsidiary, Dr Reddy's Laboratories, Inc. The recall of the drugs has been initiated under Class-III which FDA defined as "a situation in which use of or exposure to a violative product is not likely to cause adverse health consequences

- **PVR** has approved an amalgamation scheme between Bijli Holdings Pvt Ltd and itself to simplify PVR's shareholding structure.

- **The Richard Ivey School of Business** said that Ivey PMI rose to 58.0, from 52.9 in the preceding month. Analysts had expected Ivey PMI to fall to 52.0 last month.

- **U.S. Department of Labor said the unemployment rate** fell to a seasonally adjusted 5.1%, from 5.3% in the preceding month . Analysts had expected the U.S. unemployment rate to fall to 5.2% last month.

- **U.S. Department of Labor said non-farm payrolls** rose to a seasonally adjusted 173K, from 245K in the preceding month whose figure was revised up from 215K. Analysts had expected U.S. non-farm payrolls to rise 220K last month.

- **U.S. Bureau of Labor Statistics, Department of Labor said that Average hourly earnings in the U.S.** rose to a seasonally adjusted 0.3%, from 0.2% in the preceding month. Analysts had expected Average hourly earnings to remain unchanged at 0.2% last month.

- **German factory orders** fell to a seasonally adjusted -1.4%, from 1.8% in the preceding month whose figure was revised down from 2.0%. Analysts had expected German factory orders to fall -0.6% last month.

Economic Calendar

Country	Monday 7th Sept 15	Tuesday 8th Sept 15	Wednesday 9th Sept 15	Thursday 10th Sept 15	Friday 11th Sept 15
US	Labor Market Conditions Index m/m .	NFIB Small Business Index ,Consumer Credit m/m .	JOLTS Job Openings ,Crude Oil Inventories , 10-y Bond Auction , Federal Budget Balance , Treasury Currency Report .	Unemployment Claims , Import Prices m/m , Wholesale Inventories m/m , Natural Gas Storage .	PPI m/m , Core PPI m/m , Prelim UoM Consumer Sentiment , Prelim UoM Inflation Expectations , 30-y Bond Auction .
UK/EURO ZONE	Sentix Investor Confidence , German Industrial Production m/m , Construction PMI , BRC Retail Sales Monitor y/y .	Labor Market Conditions Index m/m .	French Gov Budget Balance , French Trade Balance , German 10-y Bond Auction .	French Final Non-Farm Payrolls q/q , French Industrial Production m/m , MPC Official Bank Rate Votes , Official Bank Rate , Asset Purchase Facility , MPC Asset Purchase Facility Votes , MPC Rate Statement .	German Final CPI m/m , Italian Industrial Production m/m , Construction Output m/m , 30-y Bond Auction .
INDIA					

Narnolia Securities Ltd.

Narnolia Research Lab

Stellar IT Park | 5th Floor | Office Space No. 6 | Tower-IIInd Plot No. C-25 | Sector-62 | Noida
| Ph : 0120-4215110

Central Strategy Desk - Kolkata

124 | 1st Floor | 7/1 Lords Sinha Road | Kolkata - 71
Ph : 033-22821500 | M : 93347 14418, 98302 69810