

SGX NIFTY : 8170 (5 Pt Up)

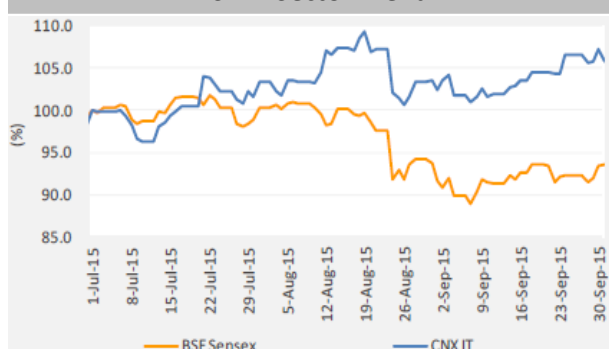
Quote of the Day

"Charlie and I decided long ago that in an investment lifetime it's too hard to make hundreds of smart decisions. That judgment became ever more compelling as Berkshire's capital mushroomed and the universe of investments that could significantly affect our results shrank dramatically. Therefore, we adopted a strategy that required our being smart - and not too smart at that - only a very few times. Indeed, we'll now settle for one good idea a year."

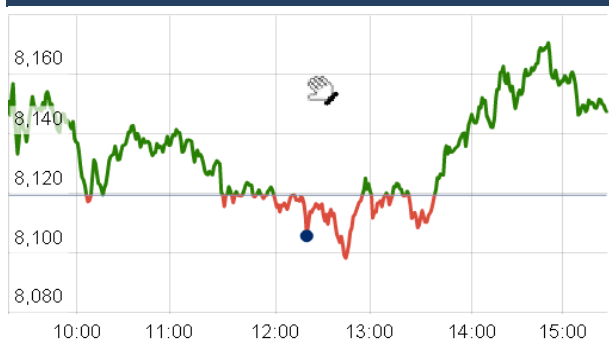
Warren Buffett

Chart of the Day

BSE IT Sector Trend



Index Action Nifty (6th Oct 15)



Index

| Contents | Page | Coverage |
|------------------------|------|----------|
| News | 2 | Update |
| Economic Calendar | 4 | Update |
| Result Calendar Q2FY16 | 3 | Update |

Market

| Name | Value | Change |
|--------------|-----------|---------|
| Sensex | 26,932.88 | 147.33 |
| Nifty | 8152.90 | 33.60 |
| DOW | 16,790.19 | 13.76 |
| NASDAQ | 4,748.36 | (32.90) |
| CAC | 4,660.64 | 43.74 |
| DAX | 9,902.83 | 88.04 |
| FTSE | 6,326.16 | 27.24 |
| NIKKIE | 18,196.71 | 10.60 |
| HANG SENG | 21,929.92 | 98.50 |
| EW ALL SHARE | 14098.2 | 77.40 |

Instituional Turnover

FII

| Investor | Buy(Cr.) | Sale(Cr.) | Net(Cr.) |
|-----------|-----------|-----------|-----------|
| 06-Oct-15 | 4402.61 | 3922.37 | 480.24 |
| Oct,15 | 13717.61 | 12538.87 | 1178.74 |
| 2015 | 910843.24 | 916910.38 | (6067.14) |

DII

| Investor | Buy(Cr.) | Sale(Cr.) | Net(Cr.) |
|-----------|-----------|-----------|----------|
| 06-Oct-15 | 2000.74 | 2425.34 | (424.60) |
| Oct,15 | 6281.29 | 6187.94 | 93.35 |
| 2015 | 367710.18 | 316998.82 | 50711.36 |

Commodity Price

| Commodity/Currencies | Value | |
|----------------------|----------|---|
| GOLD | 26652.00 | ↑ |
| SILVER | 37256.00 | ↑ |
| CRUDEOIL | 49.08 | ↓ |
| COPPER | 343.50 | ↑ |
| NATURALGAS | 161.70 | ↑ |
| DOLLAR/RS. | 65.41 | ↑ |
| EURO/RS. | 73.55 | ↑ |
| POUND/RS. | 99.47 | ↑ |

Market Snapshot

Top Price Performers

| Top Performers 1D | % Change | Top Performers 1W | % Change | Top Performers 1M | % Change |
|-------------------|----------|-------------------|----------|-------------------|----------|
| MIC | 20.00 | SRSLTD | 44.89 | KSOILS | 166.67 |
| SRSLTD | 19.99 | MLKFOOD | 43.81 | FARMAXIND | 154.55 |
| TRF | 19.98 | LITL | 43.47 | ERAINFRA | 122.63 |
| HMT | 19.90 | XCHANGING | 40.82 | LITL | 97.79 |
| GUJNRECOKE | 19.75 | IMPEXFERRO | 38.80 | ANDHRACEMT | 89.17 |

Worst Price Performers

| Worst Performers 1D | % Change | Worst Performers 1W | % Change | Worst Performers 1M | % Change |
|---------------------|----------|---------------------|----------|---------------------|----------|
| RMMIL | (10.00) | BLUESTINFO | (33.83) | AEGISCHEM | (88.35) |
| LITL | (9.88) | AMTEKINDIA | (22.13) | AMTEKINDIA | (61.54) |
| CANDC | (9.79) | HELIOSMATH | (22.09) | GOKUL | (33.04) |
| GEMINI | (8.33) | TUNITEX | (19.51) | HELIOSMATH | (31.07) |
| GLOBALCA | (8.00) | ADINATHBI | (18.52) | ROLATAN | (30.44) |

Top News

- **Wockhardt** said that UK health regulator MHRA completed inspection of its plant at Chikalthana in Maharashtra without issuing any critical observations on the facility. The US Food and Drug Administration (USFDA) had also not found any issues with respect to data security and control measures at the Mumbai-based drug maker's Chikalthana plant, but suggested continuous voluntary compliance for "desired quality culture .

- **HMT** has signed a Memorandum of Understanding (MoU) with a German company, Fraunhofer-Gesellschaft, under its 'Make in India' initiative. HMT is looking to tie-up with more companies to bring in innovation adding that the recent MoU will help HMT get an edge over the competitors in its machine business.

- **Uflex** is in process of setting up aseptic package plant at Sanand in Gujarat with capex of Rs 580 crore in first phase. Completion of all phases of this project will require total investment of Rs 1,500 crore and will provide employment to approximately 3000 people,

- **ITD Cementation Mgt Guideline** : Company has emerged the lowest bidder for Package 4 in Mumbai Metro Phase III . The tender value is Rs 3,000 crore and the Phase 3 will stretch between Mahim and Worli. While Mgt expects the project to be completed in the next 5 years, Mgt rules out any rehabilitation woes as the Metro will be underground. The consortium, of which ITD Cementation comprises 40 percent, includes two more companies- Continental Engineering Corporation and Tata Projects.

- **Pratibha Industries** has won Rs 1,000 crore water supply contract in Telangana. The company has bagged an order worth Rs 376 crore from Telangana Government for providing drinking water to Sangareddy segment from Singur source in Medak district.

- **Union Bank of India** said it is buying 49 percent stake of KBC Asset Management in Union KBC Asset Management, the joint venture between both the companies and Union KBC Trustee company . The transaction, which is subject to regulatory approval, will have no impact on the joint venture's client positions and product portfolio

- **ONGC** will set up 280 wells across 400 sq km area for drilling coalbed methane in Jharkhand as the Raghubar Das government assured allotment of land to the public sector unit. Each well would require 1.7 acre land . The state would get royalty to the tune of Rs 720 crore approximately, the release said quoting Sarraf. Das said the state would appoint a nodal officer and would allot land and adequate security forces for the ONGC project. Coalbed methane is a form of natural gas extracted from coal beds.

- **State Bank of India and the German development bank KfW** today signed a USD 300 million loan agreement to support rural and micro-enterprise lending in the country. With a focus on agricultural and microenterprise loans, the facility is designed to further strengthen and extend SBI's priority sector lending activities .

- **U.S. trade balance fell to a seasonally adjusted -48.33B**, from -41.81B in the preceding month whose figure was revised up from -41.90B. Analysts had expected U.S. trade balance to fall to -47.40B last month.

- **German factory orders** fell to a seasonally adjusted -1.8%, from -2.2% in the preceding month whose figure was revised down from -1.4%. Analysts had expected German factory orders to rise 0.5% last month.

- **Australia's trade balance** fell to a seasonally adjusted -3.095B, from -2.792B in the preceding month whose figure was revised up from -2.792B. Analysts had expected Australia's trade balance to rise to -2.550B last month.

- **Swiss consumer price inflation** rose to a seasonally adjusted 0.1%, from -0.2% in the preceding month. Analysts had expected Swiss consumer price inflation to rise 0.1% last month.

Result Calendar Q2FY16

| BSE Code | Company Name | Date | BSE Code | Company Name | Date |
|-----------------|---------------------|-------------|-----------------|---------------------|-------------|
| 533229 | BAJAJCORP | 07-Oct-15 | 532756 | MAHINDCIE | 21-Oct-15 |
| 512161 | 8KMILES | 08-Oct-15 | 507685 | WIPRO | 21-Oct-15 |
| 539149 | ICSL | 09-Oct-15 | 532628 | 3IINFOTECH | 23-Oct-15 |
| 532187 | INDUSINDBK | 09-Oct-15 | 520119 | ASAL | 23-Oct-15 |
| 533402 | INNOIND | 09-Oct-15 | 500820 | ASIANPAINT | 23-Oct-15 |
| 530173 | OSCARGLO | 09-Oct-15 | 513262 | SSWL | 23-Oct-15 |
| 533569 | SRSLTD | 10-Oct-15 | 532424 | GODREJCP | 24-Oct-15 |
| 531247 | ALPHA | 12-Oct-15 | 533179 | PERSISTENT | 25-Oct-15 |
| 500209 | INFY | 12-Oct-15 | 532888 | ASIANILES | 26-Oct-15 |
| 524661 | WELCURE | 12-Oct-15 | 500067 | BLUESTARCO | 26-Oct-15 |
| 532540 | TCS | 13-Oct-15 | 500010 | HDFC | 26-Oct-15 |
| 500089 | DICIND | 14-Oct-15 | 532988 | RANEENGINE | 26-Oct-15 |
| 509567 | GOACARBON | 14-Oct-15 | 538268 | WONDERLA | 26-Oct-15 |
| 500189 | HINDUJAVEN | 14-Oct-15 | 532215 | AXISBANK | 27-Oct-15 |
| 500696 | HINDUNILVR | 14-Oct-15 | 531530 | BETALA | 27-Oct-15 |
| 517506 | TTKPRESTIG | 14-Oct-15 | 506395 | COROMANDEL | 27-Oct-15 |
| 505537 | ZEEL | 14-Oct-15 | 511676 | GICHSGFIN | 27-Oct-15 |
| 526433 | ASMTEC | 15-Oct-15 | 532504 | NAVINFUOR | 27-Oct-15 |
| 532175 | CYIENT | 15-Oct-15 | 523642 | PIIND | 27-Oct-15 |
| 590003 | KARURVYSYA | 15-Oct-15 | 500008 | AMARAJABAT | 28-Oct-15 |
| 500253 | LICHSGFIN | 15-Oct-15 | 500425 | AMBUJACEM | 28-Oct-15 |
| 532819 | MINDTREE | 15-Oct-15 | 500096 | DABUR | 28-Oct-15 |
| 506597 | AMAL | 16-Oct-15 | 502180 | SHREDIGCEM | 28-Oct-15 |
| 517447 | RSSOFTWARE | 16-Oct-15 | 532498 | SHRIRAMCIT | 28-Oct-15 |
| 539353 | SWARAJAUTO | 16-Oct-15 | 500830 | COLPAL | 29-Oct-15 |
| 500407 | SWARAJENG | 16-Oct-15 | 517449 | MAGNAELQ | 29-Oct-15 |
| 513010 | TATASPONGE | 16-Oct-15 | 500452 | NEPCAGRO | 29-Oct-15 |
| 532218 | SOUTHBANK | 17-Oct-15 | 500301 | NEPCMICON | 29-Oct-15 |
| 506690 | UNICHEMLAB | 17-Oct-15 | 531077 | NEPCPAPER | 29-Oct-15 |
| 511288 | GRUH | 19-Oct-15 | 521192 | NEPCTEX | 29-Oct-15 |
| 532281 | HCLTECH | 19-Oct-15 | 500790 | NESTLEIND | 29-Oct-15 |
| 519552 | HERITGFOOD | 19-Oct-15 | 500420 | TORNTPHARM | 29-Oct-15 |
| 521248 | KITEX | 19-Oct-15 | 500027 | ATUL | 30-Oct-15 |
| 500266 | MAHSCOOTER | 19-Oct-15 | 523754 | EPCIN | 30-Oct-15 |
| 532522 | PETRONET | 19-Oct-15 | 500247 | KOTAKBANK | 30-Oct-15 |
| 532987 | RBL | 19-Oct-15 | 532652 | KTKBANK | 30-Oct-15 |
| 533228 | SKSMICRO | 19-Oct-15 | 532313 | MAHLIFE | 30-Oct-15 |
| 504966 | TINPLATE | 19-Oct-15 | 531049 | NEELKAN | 30-Oct-15 |
| 500410 | ACC | 20-Oct-15 | 500114 | TITAN | 30-Oct-15 |
| 532978 | BAJAJFINSV | 20-Oct-15 | 500660 | GLAXO | 31-Oct-15 |
| 500034 | BAJFINANCE | 20-Oct-15 | 532659 | IDFC | 31-Oct-15 |
| 532523 | BIOCON | 20-Oct-15 | 506655 | SUDARSCHEM | 31-Oct-15 |
| 502330 | IPAPPM | 20-Oct-15 | 524038 | VENLONENT | 31-Oct-15 |
| 526299 | MPHASIS | 20-Oct-15 | 506590 | PHILIPCARB | 02-Nov-15 |
| 532661 | RML | 20-Oct-15 | 509480 | BERGEPAIN | 03-Nov-15 |
| 532977 | BAJAJ-AUTO | 21-Oct-15 | 500338 | PRISMCEM | 03-Nov-15 |
| 500490 | BAJAJHLDNG | 21-Oct-15 | 532755 | TECHM | 03-Nov-15 |
| 500180 | HDFCBANK | 21-Oct-15 | 500414 | TIMEX | 03-Nov-15 |
| 500228 | JSWSTEEL | 21-Oct-15 | 532548 | CENTURYPLY | 04-Nov-15 |
| 532720 | M&MFIN | 21-Oct-15 | 532156 | VAIBHAVGBL | 04-Nov-15 |

| | | | | | |
|--------|-----------|-----------|--------|------------|-----------|
| 520151 | SHREYAS | 05-Nov-15 | 507966 | RASRESOR | 06-Nov-15 |
| 500470 | TATASTEEL | 05-Nov-15 | 532133 | IFGLREFRAC | 07-Nov-15 |
| 523736 | DPL | 06-Nov-15 | 505800 | RANEHOLDIN | 09-Nov-15 |
| 500520 | M&M | 06-Nov-15 | 522113 | TIMKEN | 09-Nov-15 |
| 532777 | NAUKRI | 06-Nov-15 | 500387 | SHREECEM | 14-Nov-15 |
| 500260 | RAMCOCEM | 06-Nov-15 | 511626 | RRFIN | 14-Dec-15 |

Economic Calendar

| Country | Monday 5th Oct 15 | Tuesday 6th Oct 15 | Wednesday 7th Oct 15 | Thursday 8th Oct 15 | Friday 9th Oct 15 |
|---------------------|--|--|--|--|--|
| US | Final Services PMI , ISM Non-Manufacturing PMI , Labor Market Conditions Index m/m . | Trade Balance , IBD/TIPP Economic Optimism , RICS House Price Balance , BRC Shop Price Index y/y . | Crude Oil Inventories , Consumer Credit m/m . | Unemployment Claims , Natural Gas Storage , 10-y Bond Auction , FOMC Meeting Minutes . | Import Prices m/m , Wholesale Inventories m/m , Federal Budget Balance . |
| UK/EURO ZONE | Services PMI , Retail Sales m/m , Sentix Investor Confidence , French Final Services PMI , | German Factory Orders m/m , Trade Balance , Housing Equity Withdrawal q/q , | Trade Balance , IBD/TIPP Economic Optimism , RICS House Price Balance , BRC Shop Price Index y/y . | MPC Official Bank Rate Votes , Official Bank Rate , Asset Purchase Facility , MPC Asset Purchase Facility Votes , MPC Rate Statement , Monetary Policy Summary . | French Industrial Production m/m , Italian Industrial Production m/m , Construction Output m/m , Employment Change , Unemployment Rate . |
| INDIA | HSBC India Services PMI | | | | |

Narnolia Securities Ltd.

| | |
|---|--|
| <p>Narnolia Research Lab Stellar IT Park 5th Floor Office Space No. 6 Tower-I/nd Plot No. C-25 Sector-62 Noida Ph : 0120-4215110</p> | <p>Central Strategy Desk - Kolkata 124 1st Floor 7/1 Lords Sinha Road Kolkata - 71 Ph : 033-22821500 M : 93347 14418, 98302 69810</p> |
|---|--|