

SGX NIFTY : 7564 (8.5 Pt Down)

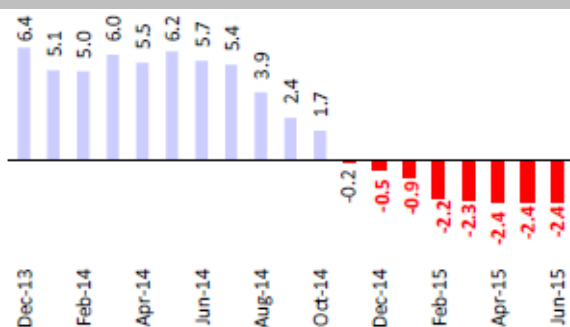
Quote of the Day

"If I was running \$1 million today, or \$10 million for that matter, I'd be fully invested. Anyone who says that size does not hurt investment performance is selling. The highest rates of return I've ever achieved were in the 1950s. I killed the Dow. You ought to see the numbers. But I was investing peanuts then. It's a huge structural advantage not to have a lot of money. I think I could make you 50% a year on \$1 million. No, I know I could. I guarantee that."

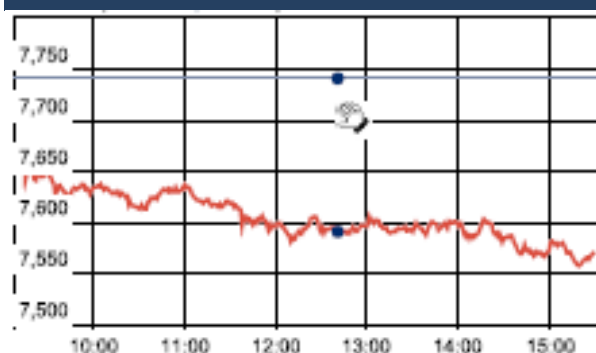
Warren Buffett

Chart of the Day

WPI Trend



Index Action Nifty (7th Jan 16)



Index

Contents	Page	Coverage
News	2	Update
Economic Calendar	3	Update

Market

Name	Value	Change
Sensex	24,851.83	(554.50)
Nifty	7568.30	(172.70)
DOW	16,514.10	-392.41
NASDAQ	4,689.43	-146.36
CAC	4,403.58	-76.89
DAX	9,979.85	-234.17
FTSE	5,954.08	-119.30
NIKKEI	17,800.02	32.68
HANG SENG	20,522.32	188.98
EW ALL SHARE	13885.58	(219.39)

Instituional Turnover

FII

Investor	Buy(Cr.)	Sale(Cr.)	Net(Cr.)
07-Jan-16	3610.14	4661.88	(1051.74)
Jan,16	758808.10	738956.85	19851.25
2016	292580.59	265440.42	27140.17

DII

Investor	Buy(Cr.)	Sale(Cr.)	Net(Cr.)
07-Jan-16	2237.52	2046.66	190.86
Jan,16	37316.55	39616.51	(1033.94)
2016	15792.35	14354.72	1437.63

Commodity Price

Commodity/Currencies	Value	
GOLD	26092.00	↑
SILVER	34540.00	↑
CRUDEOIL	33.09	↓
COPPER	300.60	↓
NATURALGAS	161.00	↑
DOLLAR/RS.	66.93	↑
EURO/RS.	72.52	↑
POUND/RS.	97.32	↓

Market Snapshot

Top Price Performers

Top Performers 1D	% Change	Top Performers 1W	% Change	Top Performers 1M	% Change
NUTEK	19.77	SURANACORP	89.86	EKC	150.51
LAKSHMIEFL	16.95	MEGASOFT	77.66	DOLATINVES	122.16
KICL	12.94	PDPL	62.57	SPENTEX	113.99
SURANACORP	9.62	BSELINFRA	62.35	MEGASOFT	108.21
GLOBALVECT	5.92	SUDAR	60.90	INFOMEDIA	104.34

Worst Performers 1D	% Change	Worst Performers 1W	% Change	Worst Performers 1M	% Change
ESSDEE	(19.55)	ESSDEE	(21.78)	SHRENUJ	(41.21)
HCIL	(16.98)	GEINDSYS	(19.84)	OUTCTYTRVL	(32.47)
SCANPGEOM	(14.51)	VALECHAENG	(18.76)	ESSDEE	(25.27)
SURAJLTD	(13.06)	SURAJLTD	(17.34)	SANWARIA	(23.86)
CALSREF	(12.50)	BALAMINES	(16.34)	CADILAHC	(21.85)

Top News

- **TTK Prestige Mgt Guideline** : The company has witnessed a double digit recovery year-on-year (y-o-y) for the company. Company had invested a lot of funds futuristically in capacity utilisation and I believe it would last until two years . Company believes e-commerce will bring a "dramatic change" for the company's sales going forward as the success rate in the segment is good.

- **Godawari Power** has informed that Chhattisgarh Environment Conservation board has granted its consent to operate total iron ore mining area of 138.96 ha in village Kachche, Uttar Baster district, Kanker, Chhattisgarh, at Ari Dongri Iron Ore Mines.

- **NBCC** has bagged a Rs 294.78-crore contract from the Indian Institute of Technology (IIT), Mandi, and the project will be completed in the next 30 months. The promoter/promoter group/ group companies of NBCC do not have any interest in IIT, Mandi from whom the work has been bagged

- **The government** is considering diluting its 11.7 percent stake in Axis Bank it holds through the Specified Undertaking of the Unit Trust of India (SUUTI) to meet shortfall in disinvestment proceeds and revenue collection during the current fiscal.

- **Kalpataru** has acquired 100 percent share capital of an SPV Company Alipurduar Transmission, a wholly owned subsidiary of REC Transmission Projects Company, in cash . SPV company incorporated in April 2015 by REC Transmission to establish transmission system for transfer of power from New HEP's in Bhutan on BOOM basis. After acquisition, ATL will become wholly owned subsidiary of the company.

- **Lupin** launched birth control pill in the United States. US subsidiary Lupin Pharmaceutical Inc has launched Tri-Lo-Marzia tablets (Norgestimate and Ethinyl Estradiol Tablets USP, 0.180 mg/0.025 mg, 0.215 mg/0.025 mg, and 0.250 mg/0.025 mg) after getting approval from the United States Food and Drug Administration (FDA) to market in the US . The company says Ortho Tri-Cyclen Lo tablets had US sales of USD 488.4 million

- **L&T Hydrocarbon Engineering**, a fully owned subsidiary of L&T, in consortium with McDermott has bagged a n offshore contract from ONGC values at Rs 2450 crore for the development of its Vashishta and S1 deepwater fields situated off the east coast of India.

- **Bharat Heavy Electricals Limited (Bhel)** has commissioned two 220/20kV substations in Afghanistan. The project has been executed by Bhel on EPC basis . The substations have been commissioned at Charikar, around 60 kms from Kabul and Doshi, around 150 kms from Kabul,

- **India's exports** are expected to decline about 13 percent to USD 270 billion in the current financial year due to global demand slowdown and fall in crude oil prices, a top official said today. The country's merchandise exports had aggregated USD 310.5 billion last fiscal.

- **Spain's Employment Ministry said the number of unemployed** people decreased by a seasonally adjusted 55,800 last month, better than expectations for a decline of 52,600. The number of unemployed people declined by 27,100 in November

- **U.S. Natural Gas Storage** fell to a seasonally adjusted annual rate of -113B, from -58B in the preceding month . Analysts had expected U.S. Natural Gas Storage to fall -99B last month.

- **Brazilian Industrial Production** fell to -12.4%, from -11.1% in the preceding month whose figure was revised up from -11.2%. Analysts had expected Brazilian Industrial Production to rise to -10.3% last month.

- **Euro Zone Retail Sales** fell to -0.3%, from -0.2% in the preceding month whose figure was revised down from -0.1%. Analysts had expected Euro Zone Retail Sales to rise to 0.2% last month.

- **German factory orders** rose to a seasonally adjusted 1.5%, from 1.7% in the preceding month whose figure was revised down from 1.8%.

Economic Calendar

Country	Monday Jan 16	Tuesday 5th Jan 16	Wednesday 6th Jan 16	Thursday 7th Jan 16	Friday 8th Jan 16
US	ISM Manufacturing PMI , Construction Spending m/m .	Total Vehicle Sales .	ADP Non-Farm Employment Change ,Trade Balance , ISM Non-Manufacturing PMI , FOMC Meeting Minutes .	Unemployment Claims.	Unemployment Rate , Non-Farm Employment Change , Unemployment Rate .
UK/EURO ZONE	et Lending to Individuals m/m , Manufacturing PMI , Spanish Manufacturing PMI .	Spanish Unemployment Change , Construction PMI ,	Services PMI , German Final Services PMI , Halifax HPI m/m .	Unemployment Rate, German Retail Sales m/m, German Factory Orders m/m,	Trade Balance .
INDIA	Auto No		HSBC Service PMI No .		

Narnolia Securities Ltd.

Narnolia Research Lab

Stellar IT Park | 5th Floor | Office Space No. 6 | Tower-II Ind Plot No. C-25 | Sector-62 | Noida | Ph : 0120-4215110

Central Strategy Desk - Kolkata

124 | 1st Floor | 7/1 Lords Sinha Road | Kolkata - 71
Ph : 033-22821500 | M : 93347 14418, 98302 69810