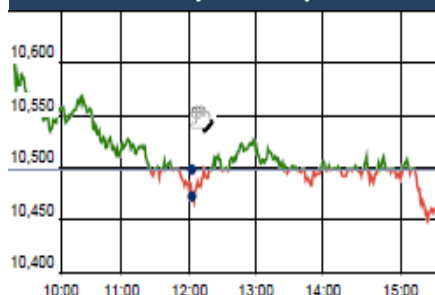


KEY LEVELS

Support 1 : 10880
Support 1 : 10782

Resistance 1 : 11130
Resistance 2 : 11268

Nifty Intraday Chart



Market

Market	Value	% Change
Morning Traded Market		
SGX NIFTY	10,518.50	0.64%
NIKKIE	21,814.86	0.78%
HANG SENG	30,555.80	0.76%
Yesterday Closing Market		
Sensex	34,082.71	-0.33%
Nifty	10,476.70	-0.21%
DOW	24,893.35	-0.08%
NASDAQ	7,051.98	-0.91%
CAC	5,255.90	1.79%
DAX	12,590.43	1.57%
FTSE	7,279.42	1.90%
EW ALL SHARE	19,235.42	0.42%

% Change in 1 day

Commodity Price (Yesterday Closing)

Commodity/Currencies	Value	% Change
GOLD	29995.00	-0.64%
SILVER	37863.00	-1.24%
CRUDEOIL	65.22	-0.38%
NATURALGAS	176.20	-0.28%
DOLLAR/RS.	64.28	0.05%
EURO/RS.	79.36	-0.44%
POUND/RS.	89.19	-0.55%

% Change in 1 day

Institutional Turnover

FII			
Investor	Buy(Cr.)	Sale(Cr.)	Net(Cr.)
07-Feb-18	5875	6897	(1023)
Feb-18	33170	35732	(2562)
2018	167392	160386	7006
DII			
Investor	Buy(Cr.)	Sale(Cr.)	Net(Cr.)
07-Feb-18	4011	3550	461
Feb-18	24442	21985	2457
2018	117472	114616	2856

Event Today

Buy Back of Shares
BEL, SOTL, GANDHITUBE
(Ex Date : 8. 2.2018)

Interim Dividend

BEL: 1.6/-, CONTROLP: 3/-, SELAN : 5/-
POWERGRID: Rs 2.45/-, IOC : Rs 19/-
INDNIPPON : Rs 6/-
(Ex Date : 8. 2.2018)

Market Outlook

After giving a gap up opening, Nifty rose to make a high of 10612.15 and then it continuously fell to make a low of 10446.55. At the end of the day the index closed at 10476.70. It had a net loss of 0.21% over the previous trading day's close. The broader market was in favor of bulls as the midcap and small cap indices out-performed the benchmark index and closed the day after gaining 0.4%-2.3%.

On the sectoral front, some buying interest was witnessed in realty, media and pharmaceutical stocks while banking and information technology indices lead to a decline. The breadth of the market was positive and about four shares advanced for every share declined at NSE.

Budget 2018 was expected to be more populist due to this being last full budget before the next general election, but the budget is much more balanced. For economy, the rise of 20% in infra spending and attempt to raise farm income is highly positive. We believe equity market in the calendar year 2018 would be more about earning growths than anything else. On-going Q3 quarter results are unfolding almost in-line with the street expectations. And double-digit growth for Nifty EPS in FY18 is almost secured.

Though there does not yet appear any threat to this on-going rally in terms of market technicals, it's worth to remember that stock market can never be a one-way street. So it would be prudent to continue trading long but with trailing stop loss. If Nifty retests lows made post-budget that would signal a correction has finally set in after the relentless rally of last 14 months.

Quote of the Day : "If you understood a business perfectly and the future of the business, you would need very little in the way of a margin of safety. So, the more vulnerable the business is, assuming you still want to invest in it, the larger margin of safety you'd need. If you're driving a truck across a bridge that says it holds 10,000 pounds and you've got a 9,800 pound vehicle, if the bridge is 6 inches above the crevice it covers, you may feel okay, but if it's over the Grand Canyon, you may feel you want a little larger margin of safety..." **Warren Buffett**

Right Issue of Equity Shares

ELPROINTL (Ex Date : 8. 2.2018)

Amalgamation

DOLLEX (Ex Date : 8. 2.2018)

Result

ABB, ACC, ADLABS, AJMERA
ANDHRABANK, ASAHIIND, BAJAJELEC
BALMLAWRIE, BALRAMCHIN
BHARATFORG, BHEL, BLUECHIP
BOMDYEING, BOROSIL, BRIGADE
CADILAH, CESC, COFFEE DAY
DAAWAT, EROSMEDIA, GKCONS
GRANULES, GSPL, HEG, HIKAL
MUTHOOTFIN, PAGEIND, PETRONET
SAIL, SKFINDIA, TALWALKARS
TORNTPHARM, WELCORP

Concall

Aurobindo: 8:30 AM, Kalpataru: 10 AM
Sonata, IPCALAB, TD Power : 11:00 AM

Dixon: 12:00 PM, Monte Carlo : 2:00 PM

EID Parry, Godrej Agrovet: 2 PM

Bharat Forge : 3:00 PM, Cadila : 4PM

Dr Lal Pathlabs, Heritage Foods : 4:30 PM

Bajaj Elect : 4:30 PM, Health Care : 5:00 PM

Torrent Pharma : 6:30 PM

CIPLA**"ACCUMULATE"****8th Feb 2018**

CIPLA continues to revive its US Business and is expected to witness a strong growth on the back of few limited competition products and meaningful product launches over next few quarters. Further the company has 12 first to file opportunities in ANDA pipeline pending for approval with US FDA. However we expect lower than expected sales growth in US in near term factoring the changes in regulatory environment and ongoing price erosion in US. We roll forward our earnings to FY19 and increased our Sales and PAT estimates for FY19 owing to expected recovery in the US Business and strong growth in key markets like South Africa and Rest of World (ROW). Keeping in mind, near term headwind related to delay in approvals of key products, increased gestation period of limited competition drug and volatility of currencies. We value CIPLA at 25x FY19E expected EPS and recommend ACCUMULATE with the target price of Rs 637.

IRB**"NEUTRAL"****8th Feb 2018**

IRB Infrastructure has come up with mixed set of numbers during Q3FY18. Traffic growth across the portfolio was quiet encouraging (9% traffic growth) and management expects traffic momentum to continue going forward. However, we expect new orders to come in next financial year only. Delay in order inflow will result into flat EPC revenue growth in next fiscal. We largely maintain our estimates for FY18/FY19. Considering delay in order inflow and overhang of CBI case related to land grabbing case on Mumbai-Pune highway, we downgrade our rating from HOLD to NEUTRAL on the stock and cut our target price from Rs.245 to Rs.230 (based on last 5 years average EV/EBITDA of 6.9x for FY19E).

**For details, refer to our daily report- India Equity Analytics*

Top News**KEC Q3FY18 Concall Highlights:-**

- ◆ High GST rate impacted Cable business. But now with reduction in GST rate, Mgt. expects recovery.
- ◆ Debt has increased due to delay in payment but it will come down at the year end.
- ◆ Rs.2500 Cr of orders in SAE order book will start converting into revenue from November 2018.
- ◆ Expect 15-20% revenue growth in FY19
- ◆ Growth in order inflow from Brazil will be higher than the current growth rate.
- ◆ Company will extend Civil business services to residential projects, affordable housing and civil work for defense.
- ◆ 6-7% EBITDA M of cable business. Margin is lower due to heavy investment in order to built capacity. Margin will improve as the revenue start increasing.
- ◆ Mgt. has guided that the Railway business top line of 1500-1600 Cr by next year.
- ◆ Expect strong order inflow from SAARC, Africa and Middle East.
- ◆ 49% of T&D order book of India is from PGCIL
- ◆ Civil Order book will be double by next year.
- ◆ 70% orders of L1 orders of Rs.4000 Cr are from India and out of these major orders are from Railway.
- ◆ Expect 50 bps improvement in EBITDA margin in FY19
- ◆ Revenue growth in FY18 will be 10%
- ◆ Interest as % of Sales will remain at 2.5-2.7%
- ◆ Expect strong traction from North East region for power T&D business.
- ◆ Competitive intensity in railway has come down as huge orders are announced under Bharatmala Projects.
- ◆ Eyeing on International markets for Railway Electrification projects.

Castrol India concall update:

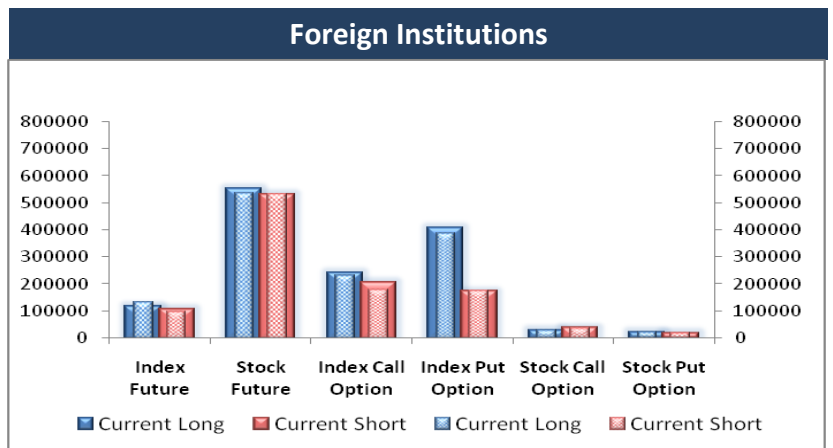
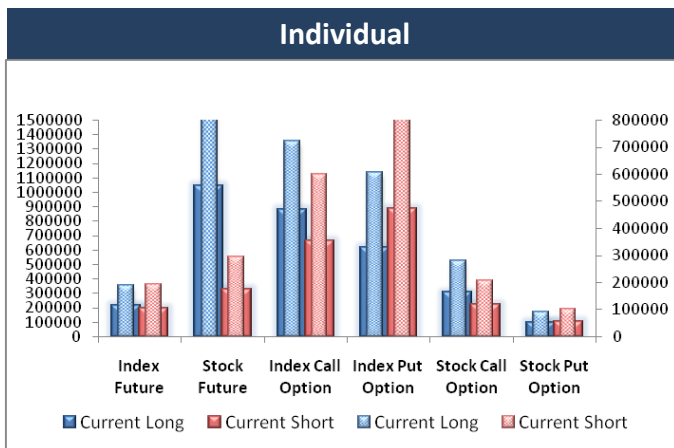
- ◆ Castrol India has entered strategic partnership with Renault and to supply lubricants.
 - ◆ Personal mobility and commercial vehicles segment continues to grow in double digit and management expects that volume will grow at a higher rate than the industry which is 4%.
 - ◆ Company has increased price by about 4% in Jan 2018 to pass on the incremental COGS. This is the second hike in last one year.
 - ◆ Increasing crude oil price may impact margins very slightly in next quarter. But majority of the cost hike will be passed on.
 - ◆ Maintenance capex guidance for CY18 is Rs.100 Cr.
 - ◆ Advertisement exp. will be in the range of 4-6% in CY18.
 - ◆ Management has guided for 100bps rise in market share in replacement market.
 - ◆ Management does not see any impact on volume in next 10 years on the advent of electrical vehicles.
- >> Century Plyboards Ltd. 3QFY18 Concall Highlights**

- >GST was the trigger of higher sales in 3QFY18 (Reduced to 18% from 28%).
- >Production of MDF segment in Punjab has started in October 2017 (contributed 11% in top line in 3QFY18).
- >1 out of 2 expansion lines in Laminate segment has started operations from 21st January 2018.
- >Estimated completion of door project will be in FY19.(CAPEX is 60 crores).
- >Total CAPEX for FY19 is Rs.156 crores.
- >Forex loss during the quarter was 8 crores.
- >Working capital cycle has improved to 61 days (65days in 2QFY18).
- >Expansion plan: 2 MDF Plants will be open in FY19. One is in UP and another is in Assam(MDF will be out of bamboo) and more new plants planned for FY19.
- > Movement in Sainik brand will be seen from H2CY18.

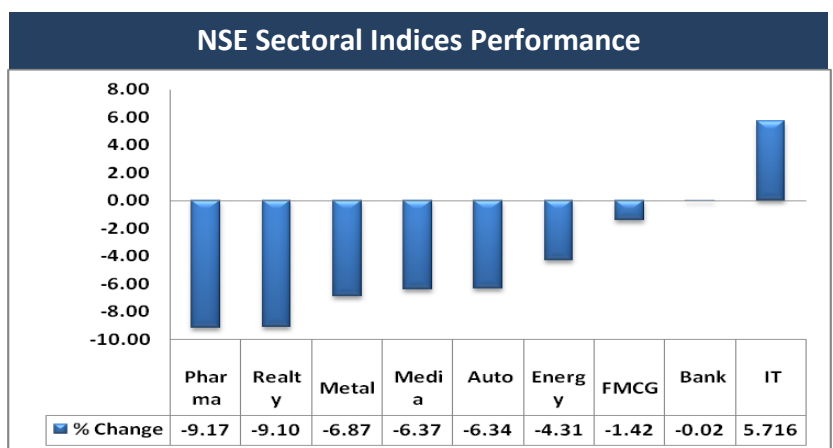
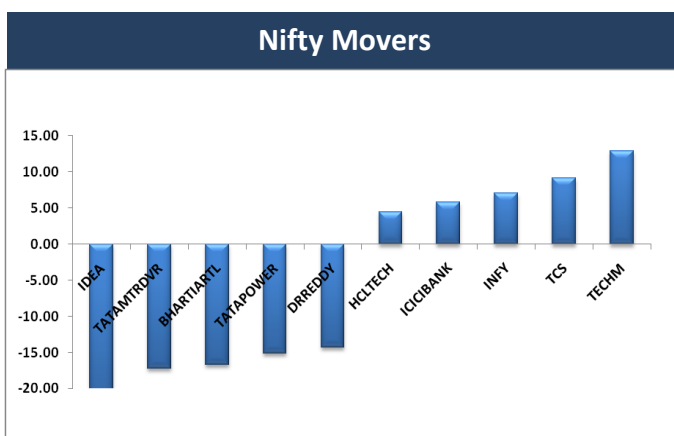
Block Deal

Exchange	Deal Date	Company	Client Name	Deal Type	Quantity	Price
NSE	07-Feb-18	ASTRON	NIRAJ LAHERCHAND MODI	BUY	250056	126
NSE	07-Feb-18	BOMDYEING	A S CONFIN PVT.LTD.	BUY	1083224	243
NSE	07-Feb-18	CEREBRAINT	RAJA RAMCHANDRA DALVI	BUY	660220	51
NSE	07-Feb-18	IZMO	BINTA SHARMA	BUY	88661	91
NSE	07-Feb-18	IZMO	SHETH BROTHERS	BUY	87025	93
NSE	07-Feb-18	OMKARCHEM	JITENDRA BANTHIA	BUY	140183	45
NSE	07-Feb-18	OMKARCHEM	MANOJ KUAMR MEHTA	BUY	124416	46
NSE	07-Feb-18	OMKARCHEM	NIKUNJ K SHAH	BUY	126738	45
NSE	07-Feb-18	BOMDYEING	A S CONFIN PVT.LTD.	SELL	1080009	241
NSE	07-Feb-18	CEREBRAINT	RAJA RAMCHANDRA DALVI	SELL	660220	51
NSE	07-Feb-18	IZMO	BINTA SHARMA	SELL	83661	92
NSE	07-Feb-18	IZMO	SHETH BROTHERS	SELL	86121	93
NSE	07-Feb-18	OMKARCHEM	JITENDRA BANTHIA	SELL	140174	45
NSE	07-Feb-18	OMKARCHEM	MANOJ KUAMR MEHTA	SELL	124416	44
NSE	07-Feb-18	OMKARCHEM	NIKUNJ K SHAH	SELL	126738	47
NSE	07-Feb-18	OMKARCHEM	RAVI PAREEK	SELL	377892	45

F&O OPEN INTEREST (Number of Contracts)



MARKET MOVERS (1 MONTH CHANGE)



Result Calendar Q3FY18

Bse Code	Company Name	Date	Bse Code	Company Name	Date
526921	21STCENMGM	8-Feb-18	532180	DHANBANK	8-Feb-18
500002	ABB	8-Feb-18	533336	DHUNINV	8-Feb-18
539560	ABHIJIT	8-Feb-18	500068	DISAQ	8-Feb-18
500410	ACC	8-Feb-18	530581	EKAMLEA	8-Feb-18
539056	ADLABS	8-Feb-18	524768	EMMESSA	8-Feb-18
500463	AGCNET	8-Feb-18	512441	ENBETRD	8-Feb-18
513349	AJMERA	8-Feb-18	533261	EROSMEDIA	8-Feb-18
538778	AKASHDEEP	8-Feb-18	514118	ESKAY	8-Feb-18
530133	AMCOIND	8-Feb-18	532511	EXCELCROP	8-Feb-18
532828	AMDIND	8-Feb-18	533400	FCONSUMER	8-Feb-18
532418	ANDHRABANK	8-Feb-18	500141	FERROALL	8-Feb-18
532397	ARMSPAPER	8-Feb-18	533896	FERVENTSYN	8-Feb-18
514482	ASAHIIND	8-Feb-18	507552	FOODSIN	8-Feb-18
519174	ASHAI	8-Feb-18	500655	GARWARPOLY	8-Feb-18
538777	ASIACAP	8-Feb-18	539407	GENCON	8-Feb-18
530723	ASITCFIN	8-Feb-18	517300	GIPCL	8-Feb-18
511427	ATNINTER	8-Feb-18	533212	GKB	8-Feb-18
512265	AVONMERC	8-Feb-18	531758	GKCONS	8-Feb-18
532507	BAGFILMS	8-Feb-18	532296	GLENMARK	8-Feb-18
500031	BAJAJELEC	8-Feb-18	513528	GLITTEKG	8-Feb-18
523319	BALMLAWRIE	8-Feb-18	531928	GOLCA	8-Feb-18
500038	BALRAMCHIN	8-Feb-18	531913	GOPAIST	8-Feb-18
509449	BHAGWOX	8-Feb-18	533761	GPTINFRA	8-Feb-18
500493	BHARATFORG	8-Feb-18	532482	GRANULES	8-Feb-18
500103	BHEL	8-Feb-18	526751	GRATEXI	8-Feb-18
514272	BHILSPIN	8-Feb-18	532702	GSPL	8-Feb-18
500058	BIHSPONG	8-Feb-18	500173	GUJFLUORO	8-Feb-18
531936	BLUECHIP	8-Feb-18	524754	GUJMEDI	8-Feb-18
506981	BLUECHIPT	8-Feb-18	515147	HALDYNGL	8-Feb-18
500020	BOMDYEING	8-Feb-18	514370	HARPOLY	8-Feb-18
502219	BOROSIL	8-Feb-18	500467	HARRMALAYA	8-Feb-18
530249	BRIDGESE	8-Feb-18	539787	HCG	8-Feb-18
532929	BRIGADE	8-Feb-18	539224	HCKKVENTURE	8-Feb-18
517421	BUTTERFLY	8-Feb-18	533525	HEALTHTECH	8-Feb-18
532321	CADILAHC	8-Feb-18	509631	HEG	8-Feb-18
500084	CESC	8-Feb-18	500292	HEIDELBERG	8-Feb-18
531235	CITIPOR	8-Feb-18	532859	HGS	8-Feb-18
539091	CITL	8-Feb-18	524735	HIKAL	8-Feb-18
539436	COFFEEDAY	8-Feb-18	511169	HIMALFD	8-Feb-18
534691	COMCL	8-Feb-18	511194	ICDSLTD	8-Feb-18
535267	COMFINCAP	8-Feb-18	504741	INDIANHUME	8-Feb-18
531216	COMFINTE	8-Feb-18	532745	INDICAP	8-Feb-18
532783	DAAWAT	8-Feb-18	531929	INNOCORP	8-Feb-18
502820	DCM	8-Feb-18	532072	INTERDIGI	8-Feb-18
500645	DEEPAKFERT	8-Feb-18	523752	IOSYSTEM	8-Feb-18
539190	DFL	8-Feb-18	533181	ISFT	8-Feb-18

531109	ISHANCH	8-Feb-18	531352	PEETISEC	8-Feb-18
501311	JAYBHCR	8-Feb-18	532522	PETRONET	8-Feb-18
512233	JAYTEX	8-Feb-18	513403	PMTELELIN	8-Feb-18
514034	JBFIND	8-Feb-18	532933	PORWAL	8-Feb-18
532627	JPOWER	8-Feb-18	531802	PRERINFRA	8-Feb-18
521242	KANDAGIRI	8-Feb-18	513613	PRESHAMET	8-Feb-18
512399	KAPASHI	8-Feb-18	530669	PRESOFI	8-Feb-18
531904	KARUNACAB	8-Feb-18	526773	PRESSURS	8-Feb-18
531163	KEMISTAR	8-Feb-18	526009	PROCAL	8-Feb-18
512597	KEYCORPSE	8-Feb-18	540544	PSPPROJECT	8-Feb-18
524019	KINGFA	8-Feb-18	539006	PTCIL	8-Feb-18
530443	KIRANSY-B	8-Feb-18	540175	REGENCY	8-Feb-18
530771	KLGCAP	8-Feb-18	505817	REILELEC	8-Feb-18
514221	KLIFESTYL	8-Feb-18	500111	RELCAPITAL	8-Feb-18
523323	KOVAI	8-Feb-18	511712	RELICTEC	8-Feb-18
512329	KRL	8-Feb-18	532687	REPRO	8-Feb-18
530149	KSLIND	8-Feb-18	509845	RJSHAH	8-Feb-18
539524	LALPATHLAB	8-Feb-18	500113	SAIL	8-Feb-18
512048	LUHARUKA	8-Feb-18	521240	SAMBANDAM	8-Feb-18
515059	MADHUDIN	8-Feb-18	516003	SARDAPLY	8-Feb-18
511000	MADHUSE	8-Feb-18	539201	SATIA	8-Feb-18
531664	MAHAV	8-Feb-18	511076	SATINDLTD	8-Feb-18
501473	MALTC	8-Feb-18	502175	SAURASHCEM	8-Feb-18
532932	MANAKSIA	8-Feb-18	511577	SAVFI	8-Feb-18
531213	MANAPPURAM	8-Feb-18	538857	SCC	8-Feb-18
503101	MARATHON	8-Feb-18	505141	SCOOTER	8-Feb-18
512415	MERCTRD	8-Feb-18	534598	SEPOWER	8-Feb-18
513721	MFSINTRCRP	8-Feb-18	513097	SHBCLQ	8-Feb-18
507621	MLKFOOD	8-Feb-18	524336	SHHARICH	8-Feb-18
539046	MNKCMILTD	8-Feb-18	539470	SHREEGANES	8-Feb-18
539762	MODCL	8-Feb-18	539334	SHREEPUSHK	8-Feb-18
500890	MODIRUBBER	8-Feb-18	516016	SHREYANIND	8-Feb-18
509760	MODRNSH	8-Feb-18	531219	SHYAMAINFO	8-Feb-18
530169	MOHITPPR	8-Feb-18	539742	SIMBHALS	8-Feb-18
523160	MORGANITE	8-Feb-18	533018	SIMPLXMIL	8-Feb-18
523832	MUKATPIP	8-Feb-18	533019	SIMPLXPAP	8-Feb-18
501477	MULLER	8-Feb-18	500472	SKFINDIA	8-Feb-18
531821	MUNOTHFI	8-Feb-18	539861	SKIL	8-Feb-18
511401	MUNOTHI	8-Feb-18	532815	SMSPHARMA	8-Feb-18
533398	MUTHOOTFIN	8-Feb-18	521036	SOURCEIND	8-Feb-18
521030	NAKODA	8-Feb-18	517166	SPELS	8-Feb-18
530557	NCLRESE	8-Feb-18	533110	SPSL	8-Feb-18
503780	NRC	8-Feb-18	516022	STARPAPER	8-Feb-18
526723	NTCIND	8-Feb-18	533316	STEL	8-Feb-18
500313	OILCOUNTUB	8-Feb-18	526951	STYLAMIND	8-Feb-18
532827	PAGEIND	8-Feb-18	506655	SUDARSCEM	8-Feb-18
530555	PARACABLES	8-Feb-18	521113	SUDTIND-B	8-Feb-18
539889	PARAGMILK	8-Feb-18	532711	SUNILHITEC	8-Feb-18
521080	PASARI	8-Feb-18	523283	SUPERHOUSE	8-Feb-18

533101	SURYAAMBA	8-Feb-18	531677	ARISINT	9-Feb-18
532782	SUTLEJTEX	8-Feb-18	531179	ARMANFIN	9-Feb-18
530217	SWOEF	8-Feb-18	523716	ASHIANA	9-Feb-18
532890	TAKE	8-Feb-18	526187	ASHRAM	9-Feb-18
533200	TALWALKARS	8-Feb-18	521076	ASIL	9-Feb-18
512271	TASHIND	8-Feb-18	502015	ASSOSTNB	9-Feb-18
500483	TATACOMM	8-Feb-18	517429	ATHENAGLO	9-Feb-18
521228	TATIAGLOB	8-Feb-18	505032	AUTOPRD	9-Feb-18
532349	TCI	8-Feb-18	512573	AVANTI	9-Feb-18
533393	TCIDEVELOP	8-Feb-18	512109	AVIVA	9-Feb-18
505400	TEXINFRA	8-Feb-18	514360	AXISRAIL	9-Feb-18
533326	TEXRAIL	8-Feb-18	530197	BAGADIA	9-Feb-18
531652	THIRDFIN	8-Feb-18	512261	BAJGLOB	9-Feb-18
524717	TITANBIO	8-Feb-18	539834	BALGOPAL	9-Feb-18
530045	TITANSEC	8-Feb-18	532134	BANKBARODA	9-Feb-18
500420	TORNTPHARM	8-Feb-18	500043	BATAINDIA	9-Feb-18
500251	TRENT	8-Feb-18	522650	BEMHY	9-Feb-18
517562	TRIGYN	8-Feb-18	524606	BERLDRG	9-Feb-18
532515	TVTODAY	8-Feb-18	531582	BERYLSE	9-Feb-18
512175	VAMA	8-Feb-18	531530	BETALA	9-Feb-18
530521	VIRAT	8-Feb-18	539120	BFFL	9-Feb-18
531668	VISIONCO	8-Feb-18	504646	BGWTATO	9-Feb-18
539167	VLL	8-Feb-18	531862	BHARATAGRI	9-Feb-18
524212	WANBURY	8-Feb-18	514183	BLACKROSE	9-Feb-18
508494	WARRENTEA	8-Feb-18	532719	BLKASHYAP	9-Feb-18
532144	WELCORP	8-Feb-18	530809	BNRUDY	9-Feb-18
500444	WSTCSTPAPR	8-Feb-18	509470	BOMOXY-B1	9-Feb-18
501270	ZCHANAIN	8-Feb-18	500547	BPCL	9-Feb-18
512107	ZGOLKOND	8-Feb-18	540710	CAPACITE	9-Feb-18
501386	ZSWASTSA	8-Feb-18	509486	CAPRIHANS	9-Feb-18
539528	AAYUSH	9-Feb-18	531682	CATECH	9-Feb-18
540691	ABCAPITAL	9-Feb-18	530789	CEEJAY	9-Feb-18
531161	ABMKNO	9-Feb-18	532885	CENTRALBK	9-Feb-18
511706	ACTIONFI	9-Feb-18	501150	CENTRUM	9-Feb-18
523031	ADSDIAG	9-Feb-18	504671	CHASBRT	9-Feb-18
535467	AIFL	9-Feb-18	511742	CHOKSEC	9-Feb-18
514394	AJIL	9-Feb-18	500147	CMIFPE	9-Feb-18
530973	ALFAICA	9-Feb-18	532104	CMSINFO	9-Feb-18
539523	ALKEM	9-Feb-18	508571	COCHMAL	9-Feb-18
526439	AMBIT	9-Feb-18	531041	COMPEAU	9-Feb-18
534612	AMTL	9-Feb-18	522231	CONART	9-Feb-18
500012	ANDHRAPET	9-Feb-18	538922	COSYN	9-Feb-18
530721	ANGIND	9-Feb-18	532392	CREATIVEYE	9-Feb-18
512091	ANSHNCO	9-Feb-18	532271	CYBERMAT	9-Feb-18
523694	APCOTEXIND	9-Feb-18	500117	DCW	9-Feb-18
540692	APEX	9-Feb-18	502137	DECCANCE	9-Feb-18
517096	APLAB	9-Feb-18	532760	DEEPIND	9-Feb-18
524412	AREYDRG	9-Feb-18	511451	DHARFIN	9-Feb-18
531017	ARISE	9-Feb-18	533146	DLINKINDIA	9-Feb-18

523618	DREDGECORP	9-Feb-18	505212	JAINEX	9-Feb-18
524818	DYNAMIND	9-Feb-18	506943	JBCHEPHARM	9-Feb-18
532707	DYNPRO	9-Feb-18	524731	JENBURPH	9-Feb-18
517477	ELNET	9-Feb-18	516078	JUMBO	9-Feb-18
509525	EMPIND	9-Feb-18	504840	KAIRA	9-Feb-18
532219	ENERGYDEV	9-Feb-18	513693	KAJARIR	9-Feb-18
531259	ESHAMEDIA	9-Feb-18	501151	KARTKIN	9-Feb-18
521137	EUREKAI	9-Feb-18	533192	KCPSUGIND	9-Feb-18
530079	FAZE3Q	9-Feb-18	507794	KHAICHEM	9-Feb-18
532518	FLORENCE	9-Feb-18	507946	KIDUJA	9-Feb-18
522017	FLUIDOM	9-Feb-18	532067	KILPEST	9-Feb-18
531137	GEMSI	9-Feb-18	521248	KITEX	9-Feb-18
500620	GESHIP	9-Feb-18	539384	KRISHNACAP	9-Feb-18
507815	GILLETTE	9-Feb-18	530313	LAURLOR	9-Feb-18
532773	GLOBALVECT	9-Feb-18	531288	LEADFIN	9-Feb-18
532181	GMDCLTD	9-Feb-18	531527	LLORF	9-Feb-18
506480	GOCLCORP	9-Feb-18	532740	LOKESHMACH	9-Feb-18
500151	GOLDENTOBC	9-Feb-18	500520	M&M	9-Feb-18
523676	GOLKUNDIA	9-Feb-18	500264	MAFATIND	9-Feb-18
530663	GOYALASS	9-Feb-18	532896	MAGNUM	9-Feb-18
518029	GSCLCEMENT	9-Feb-18	531515	MAHANIN	9-Feb-18
500170	GTNINDS	9-Feb-18	513430	MAITRI	9-Feb-18
532160	GUJSTATFIN	9-Feb-18	531613	MAL	9-Feb-18
532467	HAZOOR	9-Feb-18	530011	MANGCHEFER	9-Feb-18
500183	HFCL	9-Feb-18	500206	MARGOFIN	9-Feb-18
514043	HIMATSEIDE	9-Feb-18	531642	MARICO	9-Feb-18
500104	HINDPETRO	9-Feb-18	523144	MEDICAPQ	9-Feb-18
500449	HOCL	9-Feb-18	532307	MELSTAR	9-Feb-18
500193	HOTELEELA	9-Feb-18	526622	MFLINDIA	9-Feb-18
522289	IFMIMPX	9-Feb-18	500271	MFSL	9-Feb-18
500212	IFSL	9-Feb-18	539957	MGL	9-Feb-18
531968	IITLPROJ	9-Feb-18	523343	MICROSE	9-Feb-18
514238	IKAB	9-Feb-18	505336	MIRCH	9-Feb-18
533177	IL&FSTRANS	9-Feb-18	526891	MKTCREAT	9-Feb-18
517370	INCAP	9-Feb-18	532140	MOHITE	9-Feb-18
511355	INDCEMCAP	9-Feb-18	533286	MOIL	9-Feb-18
530005	INDIACEM	9-Feb-18	526263	MOLDTEK	9-Feb-18
530979	INDIAHOME	9-Feb-18	523544	MONEL	9-Feb-18
509692	INDIANCARD	9-Feb-18	512065	MRUTR	9-Feb-18
524648	INDOAMIN	9-Feb-18	539917	NAGARFERT	9-Feb-18
504746	INLCM	9-Feb-18	534184	NAGAROIL	9-Feb-18
526871	INTECCAP	9-Feb-18	532234	NATIONALUM	9-Feb-18
535958	INTEGRA	9-Feb-18	504882	NATIONSTD	9-Feb-18
509709	INTLCONV	9-Feb-18	502168	NCLIND	9-Feb-18
513361	ISWL	9-Feb-18	532649	NECLIFE	9-Feb-18
500213	ITHL	9-Feb-18	509040	NETLINK	9-Feb-18
507789	JAGSNPHARM	9-Feb-18	511658	NETTLINX	9-Feb-18
526865	JAINCO	9-Feb-18	526721	NICCOPAR	9-Feb-18

512489	OASISEC	9-Feb-18
533106	OIL	9-Feb-18
500312	ONGC	9-Feb-18
517242	ONIDSAK	9-Feb-18
509099	OSWALEA	9-Feb-18
523151	OTCO	9-Feb-18
540467	PARMSILK	9-Feb-18
526349	PARTIND	9-Feb-18
526381	PATINTLOG	9-Feb-18
500143	PHCAP	9-Feb-18
532387	PNC	9-Feb-18
536659	PVVINFRA	9-Feb-18
538596	QUANTBUILD	9-Feb-18
532866	QUINTEGRA	9-Feb-18
522257	RAJOENG	9-Feb-18
502587	RAMAPULP	9-Feb-18
533262	RAMKY	9-Feb-18
531572	RANJITSE	9-Feb-18
520111	RATNAMANI	9-Feb-18
538707	RCCL	9-Feb-18
524230	RCF	9-Feb-18
511585	REGTRUS	9-Feb-18
503162	RELCHEMQ	9-Feb-18
530919	REMSONSIND	9-Feb-18
539691	RGCEL	9-Feb-18
520008	RICOAUTO	9-Feb-18
531822	RODIUM	9-Feb-18
533168	ROSSELLIND	9-Feb-18
532735	RSYSTEMINT	9-Feb-18
530449	RUNGTAIR	9-Feb-18
523025	SAFARIND	9-Feb-18
539895	SAGL	9-Feb-18
511066	SAKTHIFIN	9-Feb-18
517059	SALZER	9-Feb-18
530073	SANGHVIMOV	9-Feb-18
500112	SBIN	9-Feb-18
540497	SCHAND	9-Feb-18
512529	SEQUENT	9-Feb-18
519031	SHAHFOOD	9-Feb-18
532455	SHALIWIR	9-Feb-18
540259	SHANGAR	9-Feb-18
531667	SHGOVTR	9-Feb-18
532323	SHIVACEM	9-Feb-18
539683	SHIVKAMAL	9-Feb-18
512463	SHRGLTR	9-Feb-18
532007	SHVFL	9-Feb-18
524642	SIKOZY	9-Feb-18
531738	SILICON	9-Feb-18
533206	SJVN	9-Feb-18

505192	SMLISUZU	9-Feb-18
532784	SOBHA	9-Feb-18
526901	SONALAD	9-Feb-18
520057	SONASTEER	9-Feb-18
506180	SRIOMTR	9-Feb-18
532531	STAR	9-Feb-18
512531	STCINDIA	9-Feb-18
504180	STDBAT	9-Feb-18
534748	STEELXIND	9-Feb-18
531509	STEP2COR	9-Feb-18
526500	STRGRENWO	9-Feb-18
506003	SUDAI	9-Feb-18
511654	SUGALDAM	9-Feb-18
539117	SUJALA	9-Feb-18
533166	SUNDARAM	9-Feb-18
532733	SUNTV	9-Feb-18
531102	SURANACORP	9-Feb-18
511185	SURYAKR	9-Feb-18
537259	SUYOG	9-Feb-18
532667	SUZLON	9-Feb-18
503816	SWADPOL	9-Feb-18
539353	SWARAJAUTO	9-Feb-18
532051	SWELECTES	9-Feb-18
532276	SYNDIBANK	9-Feb-18
521038	TAMJAIM	9-Feb-18
501301	TATAINVEST	9-Feb-18
500470	TATASTEEL	9-Feb-18
533281	TECHNO	9-Feb-18
533216	TECHNOFAB	9-Feb-18
505196	TIL	9-Feb-18
500422	TRANSCHEM	9-Feb-18
506687	TRANSPEK	9-Feb-18
532513	TVSELECT	9-Feb-18
532505	UCOBANK	9-Feb-18
530131	UDAICEMENT	9-Feb-18
530363	UGARSUGAR	9-Feb-18
538706	ULTRACAB	9-Feb-18
532398	UMESLTD	9-Feb-18
530997	UNIQUEO	9-Feb-18
526775	VALIANT	9-Feb-18
505232	VELJAN	9-Feb-18
516072	VISHNU	9-Feb-18
512064	VISTR	9-Feb-18
531266	VSTTILLERS	9-Feb-18
506142	VYAPAR	9-Feb-18
533269	WABAG	9-Feb-18
523660	WATERBASE	9-Feb-18
532016	WELLESLEY	9-Feb-18
538382	WESTLEIRES	9-Feb-18

Earning Estimate Q3FY18

BSE CODE	NSE CODE	Sales Rs Cr	Sales YoY	Pat Rs Cr	PAT YoY
7-Feb-18	AUROPHARMA	4265	9.20	638	13.10
7-Feb-18	CIPLA	4265	16.90	479	27.80
7-Feb-18	DALMIABHA	1941	11.60	115	221.70
7-Feb-18	EICHERMOT	2207	20.30	548	31.00
7-Feb-18	GET&D	1270	9.30	53	20.50
7-Feb-18	HEXAWARE	988	5.00	115	(5.40)
7-Feb-18	IGL	1144	20.80	177	18.00
7-Feb-18	IPCALAB	833	12.60	74	63.70
7-Feb-18	IRB	1374	(2.60)	159	(13.40)
7-Feb-18	KSCL	81	20.00	17	150.00
7-Feb-18	NAVNETEDUL	200	28.00	17	33.80
7-Feb-18	SRF	1326	10.00	103	(8.00)
7-Feb-18	VOLTAS	1377	16.60	90	10.50
8-Feb-18	MUTHOOTFIN	983	35.50	439	50.70
8-Feb-18	ABB	2745	10.20	186	27.00
8-Feb-18	ACC	3470	31.70	202	64.10
8-Feb-18	BHARATFORG	1296	37.30	212	64.60
8-Feb-18	BHEL	6657	5.20	72	(23.60)
8-Feb-18	CADILAHC	3128	35.40	551	95.40
8-Feb-18	CESC	1637	1.00	158	3.90
8-Feb-18	GLENMARK	2318	(5.90)	256	(46.30)
8-Feb-18	GRANULES	406	13.00	43	11.20
8-Feb-18	GSPL	378	41.70	193	62.60
8-Feb-18	PAGEIND	615	16.50	74	17.00
8-Feb-18	PARAGMILK	491	10.00	19	LP
8-Feb-18	PETRONET	6855	8.80	560	40.90
8-Feb-18	SAIL	14428	27.70	(108)	Loss
8-Feb-18	TATACOMM	4268	(2.10)	25	1297.80
8-Feb-18	TORNTPHARM	1552	9.80	209	(8.80)
9-Feb-18	ALKEM	1668	12.60	243	4.10
9-Feb-18	BANKBARODA	3777	20.50	528	108.80
9-Feb-18	BATA	679	6.00	57	(3.40)
9-Feb-18	BPCL	63373	18.40	2085	(9.90)
9-Feb-18	HINDPETRO	58694	21.10	1472	(7.40)
9-Feb-18	INDIACEM	1339	6.70	29	(3.60)
9-Feb-18	M&M	11633	9.90	1030	30.50
9-Feb-18	MARICO	1612	14.00	209	9.00
9-Feb-18	MGL	595	18.00	117	18.50
9-Feb-18	NATIONALUM	2609	31.20	296	74.00
9-Feb-18	OIL	2718	14.40	707	55.60
9-Feb-18	ONGC	24294	21.90	6711	54.20
9-Feb-18	SBIN	18883	6.40	2140	17.50
9-Feb-18	SUNTV	683	15.80	296	23.40
9-Feb-18	TATASTEEL	30268	8.30	1330	553.30
10-Feb-18	AMARAJABAT	1507	13.50	125	11.20
10-Feb-18	BIRLACORPN	1429	93.30	4	111.60
10-Feb-18	COALINDIA	21989	7.70	3324	15.20

Result Q3FY18

BSE CODE	NSE CODE	Sales Rs Cr	Sales YoY	Pat Rs Cr	PAT YoY
500182	HEROMOTOCO	7306	14.78	805	4.32
532839	DISHTV	740	(1.07)	(4)	(113.12)
500089	DICIND	200	11.50	(10)	(295.31)
513108	GANDHITUBE	28	26.75	9	52.46
519552	HERITGFOOD	572	(11.99)	15	(24.66)
517015	VINDHYATEL	320	54.12	17	55.14
526397	ALPHAGEO	104	28.02	14	20.19
500048	BEML	732	1.67	17	(23.23)
524370	BODALCHEM	304	11.67	31	(3.36)
532807	CINELINE	5	1.90	2	31.61
500087	CIPLA	3834	7.59	403	7.64
513353	COCHINM	43	62.31	0	(117.30)
505200	EICHERMOT	2264	23.83	469	12.23
500125	EIDPARRY	3536	2.66	108	(18.16)
505700	ELECON	259	(9.44)	(6)	(40.19)
500133	ESABINDIA	129	15.27	10	45.45
532767	GAYAPROJ	904	73.66	47	228.74
526797	GREENPLY	399	11.02	37	52.79
517271	HBLPOWER	414	9.08	9	(5.39)
532514	IGL	1308	38.16	166	14.39
500207	INDORAMA	524	(8.34)	(19)	(49.38)
532717	INDOTECH	47	82.60	(1)	(90.53)
532851	INSECTICID	176	10.52	10	79.18
524494	IPCALAB	859	14.42	102	147.61
532947	IRB	1296	(8.13)	207	12.37
509715	JAYSREETEA	202	19.19	16	8200.00
522263	JMCPROJECT	707	28.92	24	30.07
539276	KAYA	100	3.26	(4)	13.57
532899	KSCL	71	4.10	7	94.08
532254	POLARIS	681	32.08	43	(10.64)
590051	SAKSOFT	75	18.22	7	55.65
532725	SOLARINDS	466	12.48	59	24.76
532221	SONATSOFTW	767	25.17	48	23.47
533553	TDPOWERSYS	94	46.11	(2)	(81.60)
526650	TFCILTD	59	25.07	23	40.24
532779	TORNTPOWER	2754	18.37	206	92.25
523261	VENKEYS	696	12.70	70	67.73
500575	VOLTAS	1374	16.98	100	23.15
531335	ZYDUSWELL	132	28.41	37	43.28
524804	AUROPHARMA	4269	11.04	593	2.57
532475	APTECHT	56	4.48	2	(72.05)
532930	BGREENERGY	708	9.55	(4)	(142.55)
533309	DALMIABHA	1722	(0.99)	40	12.08
500650	EXCELINDUS	147	59.38	28	31.98
531599	FDC	249	15.88	43	93.60
532809	FSL	863	0.35	100	42.61
522275	GET&D	1439	23.46	72	61.81

532835	ICRA	57	7.67	22	5.76
522287	KALPATPOWR	1417	26.99	75	31.66
508989	NAVNETEDUL	174	9.50	12	(6.09)
503806	SRF	1127	0.98	122	12.18
500148	UFLEX	969	5.07	10	(74.41)

Economic Calendar					
Country	Monday 5th Feb 18	Tuesday 6th Feb 18	Wednesday 7th Feb 18	Thursday 8th Feb 18	Friday 9th Feb 18
US	Average Hourly Earnings m/m , Non-Farm Employment Change , Unemployment Rate , Trade Balance , Factory Orders m/m.		NFIB Small Business Index , JOLTS Job Openings , IBD/TIPP Economic Optimism , Consumer Credit m/m	Import Prices m/m , Final Wholesale Inventories m/m , Crude Oil Inventories , 10-y Bond Auction	PPI m/m, Unemployment Claims , Core PPI m/m , Natural Gas Storage , 30-y Bond Auction , Federal Budget Balance
UK/EURO ZONE	German Retail Sales m/m , CPI Flash Estimate y/y , Core CPI Flash Estimate y/y , PPI m/m	Halifax HPI m/m , Italian Retail Sales m/m , Sentix Investor Confidence, Retail Sales m/m , BRC Retail Sales Monitor y/y	Unemployment Rate	French Industrial Production m/m , French Trade Balance, Italian Industrial Production m/m , Manufacturing Production m/m , Goods Trade Balance	BOE Credit Conditions Survey , Industrial Production m/m , 10-y Bond Auction , ECB Monetary Policy Meeting Accounts
INDIA			RBI CREDIT POLICY		



Narnolia Securities Ltd

201 | 2nd Floor | Marble Arch Building | 236B-AJC Bose
Road | Kolkata-700 020 , Ph : 033-40501500

email: narnolia@narnolia.com,
website : www.narnolia.com

Risk Disclosure & Disclaimer: This report/message is for the personal information of the authorized recipient and does not construe to be any investment, legal or taxation advice to you. Narnolia Securities Ltd. (Hereinafter referred as NSL) is not soliciting any action based upon it. This report/message is not for public distribution and has been furnished to you solely for your information and should not be reproduced or redistributed to any other person in any form. The report/message is based upon publicly available information, findings of our research wing "East wind" & information that we consider reliable, but we do not represent that it is accurate or complete and we do not provide any express or implied warranty of any kind, and also these are subject to change without notice. The recipients of this report should rely on their own investigations, should use their own judgment for taking any investment decisions keeping in mind that past performance is not necessarily a guide to future performance & that the the value of any investment or income are subject to market and other risks. Further it will be safe to assume that NSL and /or its Group or associate Companies, their Directors, affiliates and/or employees may have interests/ positions, financial or otherwise, individually or otherwise in the recommended/mentioned securities/mutual funds/ model funds and other investment products which may be added or disposed including & other mentioned in this report/message.