

SGX NIFTY : 8957 (1.5 Pt Down)

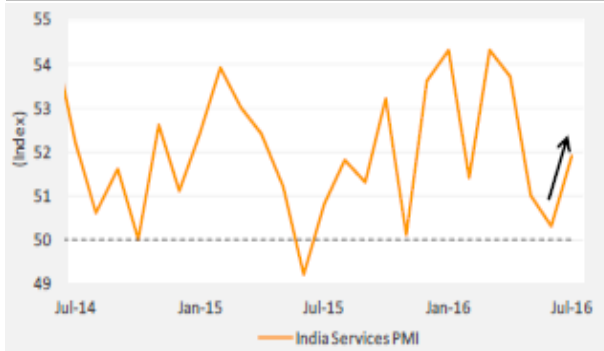
Quote of the Day

"The individual investor should act consistently as an investor and not as a speculator. This means that he should be able to justify every purchase he makes and each price he pays by impersonal, objective reasoning that satisfies him that he is getting more than his money's worth for his purchase."

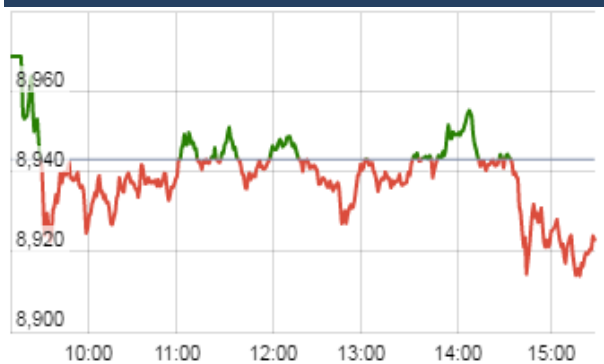
Benjamin Graham

Chart of the Day

India Service PMI No



Index Action Nifty (7th Sept 16)



Index

Contents	Page	Coverage
News	2	Update
Economic Calendar	3	Update

Market

Name	Value	Change
Sensex	28,926.36	(51.66)
Nifty	8917.95	(25.05)
DOW	18,538.12	46.16
NASDAQ	5,283.93	8.02
CAC	4,557.66	27.70
DAX	10,752.98	65.84
FTSE	6,846.58	20.53
NIKIE	16,971.05	(41.39)
HANG SENG	23,766.79	24.98
EW ALL SHARE	15685.29	7.84

Instituional Turnover

FII

Investor	Buy(Cr.)	Sale(Cr.)	Net(Cr.)
07-Sep-16	5606.66	4752.60	854.06
Sept,16	18081.13	15858.67	2222.46
2016	721318.75	695187.96	26130.79

DII

Investor	Buy(Cr.)	Sale(Cr.)	Net(Cr.)
07-Sep-16	2406.07	3174.62	(768.55)
Sept,16	9594.12	10187.84	(593.72)
2016	301838.17	302099.78	(261.61)

Commodity Price

Commodity/Currencies	Value	
GOLD	31305.00	↓
SILVER	47013.00	↓
CRUDEOIL	44.67	↑
COPPER	312.50	↑
NATURALGAS	178.40	↓
DOLLAR/RS.	66.37	↓
EURO/RS.	74.78	↑
POUND/RS.	88.77	↑

Market Snapshot

Top Price Performers

Top Performers 1D	% Change	Top Performers 1W	% Change	Top Performers 1M	% Change
MIC	20.00	PRAKASHSTL	66.67	PRIMEPRO	92.11
FMGOETZE	20.00	PATELENG	58.33	NOVAIRNSTL	89.60
SUBROS	19.41	SUNILHITEC	37.21	PATELENG	84.80
UNITECH	18.62	BHAGWATIHO	34.49	SUPREMETEX	83.04
PRAKASHSTL	17.49	BINNY	33.83	BINNY	80.68

Worst Performers 1D	% Change	Worst Performers 1W	% Change	Worst Performers 1M	% Change
GREENLAM	(20.64)	XCHANGING	(35.02)	TCI	(46.79)
BILENERGY	(12.12)	SAHARAHOUS	(14.13)	XCHANGING	(43.10)
KANANIIND	(10.20)	GEINDSYS	(13.85)	WELSPUNIND	(42.31)
XCHANGING	(9.78)	JVLGRO	(13.03)	GEINDSYS	(40.87)
SAHARAHOUS	(9.12)	KSOILS	(12.22)	USHERAGRO	(38.72)

Top News

• **Titan Mgt Guideline** : With the upcoming festive season and implementation of 7th Pay Commission, demand for gold is expected to rise in the next few quarters.

Demand for gold continues to be muted, but clear growth for diamond studded products is visible for Titan

Demand is a concern across the industry.

In its jewellery business, the company continues to maintain its market share as well as seeing improvement in margins.

Titan is guiding for a 4-6 percent growth in watches segment this fiscal.

• Mgt Int : BHARATFORG

Bharat Forge eyes sales of 220,000 class 8 trucks this fiscal

>>The worst of North America truck orders is behind us. "A part of it is because of inventory correction and holidays are also over."

>>About 30 percent of Bharat Forge's revenues comes from North America's truck market.

• **Motherson Sumi Systems Ltd** has informed that MSSL Manufacturing Hungary Kft., a subsidiary of MSSL GmbH (which is a subsidiary of Motherson Sumi Systems Limited) is acquiring the Automotive Business Unit of Abraham es Tarsa Kft. (Abraham and Co. Ltd) located in Turkeve, Hungary on a going concern basis and would also give on lease part of acquired assets to SMR Hungary.

• Mgt Int : ATUL AUTO

Easy to achieve sales of 4000/month going ahead: Atul Auto

Demand is expected to further pick up post monsoon, and recently-launched petrol unit has also seen a good response, adding to better sales numbers.

The company's capacity utilisation is at 76 percent after last year's expansion.

• **Shipping Corporation of India (SCI)**, said it has held discussions for reviving the joint venture with Islamic Republic of Iran Shipping Lines (IRISL).

• **The National Highways Authority of India (NHAI)** has awarded a Rs 820 crore highway project in Rajasthan to PNC Infratech. It said the 83 km long section passes through three districts of Rajasthan -- Dausa, Tonk and Jaipur -- and has been awarded on hybrid annuity mode

• **IL&FS Engineering Mgt Guideline** : The total order book stands at around Rs 10,000 crore now . The GAIL project, which IL&FS got through a reverse auction, will bring in margins in excess of 13-14 percent . The company has won arbitration award of close to Rs 160 crore . The company has some aggressive targets in the next six months .

• **Transformers and Rectifiers Mgt Guideline** : Company is confident of orders worth Rs 120 crore coming in the next one-two days. He is also confident of a 30 percent topline growth in FY17 versus FY16, to around Rs 800 crore.

The company's total orderbook currently stands at Rs 860 crore. The company had made a loss of Rs 7 crore in FY16 and revenues stood at Rs 600 crore.

• **Wipro** is bagging 3-yr IT contract from Norway-based rail Company . As part of the three-year agreement, Wipro will implement its boundaryless datacenter (BLDC) and live workspace solutions and utilise its next-generation delivery framework ServiceNXT to deliver services which will help NSB Group variablise their IT operations.

• **U.S.** a measure of mortgage loan application volume, increased by a seasonally adjusted 0.9% in the week ending September 2 to 549.9. That follows a gain of 2.8% to 545.2 in the preceding week.

• **U.K. Office for National Statistics** said that manufacturing production decreased by a seasonally adjusted 0.9% in July, worse than expectations for a decline of 0.4% and following a drop of 0.2% a month earlier that was revised from an initial 0.3% decline.

• **Australia's trade balance** rose to a seasonally adjusted - 2.410B, from -3.195B in the preceding month. Analysts had expected Australia's trade balance to rise to -2.750B last month.

• **Japan's Bank Lending** fell to a seasonally adjusted annual rate of 2.0%, from 2.1% in the preceding quarter. Analysts had expected Japan's Bank Lending to fall to 2.0% in the last quarter.

Result Calendar Q1FY17

BSE Code	Company Name	Result Date	BSE Code	Company Name	Result Date
506166	APIS	08-Sep-16	500032	BAJAJHIND	12-Sep-16
505230	CIMMCO	08-Sep-16	532930	BGREENERGY	12-Sep-16
533261	EROSMEDIA	08-Sep-16	501833	CHOWGULSTM	12-Sep-16
533704	ESSARSHPNG	08-Sep-16	511716	ESCORTSFIN	12-Sep-16
526881	FINANTECH	08-Sep-16	532715	GITANJALI	12-Sep-16
532957	GOKAKTEX	08-Sep-16	506186	GLXYENT	12-Sep-16
500173	GUJFLUORO	08-Sep-16	517271	HBLPOWER	12-Sep-16
509635	HINDCOMPOS	08-Sep-16	515145	HINDNATGLS	12-Sep-16
532286	JINDALSTEL	08-Sep-16	532368	LYCOS	12-Sep-16
539917	NAGARFERT	08-Sep-16	533152	MBLINFRA	12-Sep-16
532891	PURVA	08-Sep-16	513683	NLCINDIA	12-Sep-16
500356	RAMANEWS	08-Sep-16	514354	PREMIERPOL	12-Sep-16
524480	RIDDHI	08-Sep-16	532939	RPOWER	12-Sep-16
500113	SAIL	08-Sep-16	526725	SANDESH	12-Sep-16
526807	SEAMECLTD	08-Sep-16	532886	SELMCL	12-Sep-16
532515	TVTODAY	08-Sep-16	532348	SUBEX	12-Sep-16
523261	VENKYS	08-Sep-16	500470	TATASTEEL	12-Sep-16
500444	WSTCSTPAPR	08-Sep-16	530245	ARYAMAN	13-Sep-16
534742	ZUARI	08-Sep-16	531847	ASTAR	13-Sep-16
500780	ZUARIGLOB	08-Sep-16	539290	BINDALAGRO	13-Sep-16
533278	COALINDIA	09-Sep-16	532678	BRFL	13-Sep-16
532666	FCSSOFT	09-Sep-16	523618	DREDGECORP	13-Sep-16
532702	GSPL	09-Sep-16	532799	HUBTOWN	13-Sep-16
539336	GUJGAS	09-Sep-16	533177	IL&FSTRANS	13-Sep-16
513691	JMTAUTOLD	09-Sep-16	500108	MTNL	13-Sep-16
532532	JPASSOCIAT	09-Sep-16	500317	OSWALAGRO	13-Sep-16
532997	KSK	09-Sep-16	539351	PRABHAT	13-Sep-16
532778	LITL	09-Sep-16	531746	PRAENG	13-Sep-16
513269	MANINDS	09-Sep-16	500390	RELINFRA	13-Sep-16
532234	NATIONALUM	09-Sep-16	533206	SJVN	13-Sep-16
505509	RESPONIND	09-Sep-16	532667	SUZLON	13-Sep-16
533206	SJVN	09-Sep-16	532721	VISASTEEL	13-Sep-16
532784	SOBHA	09-Sep-16	515055	ANANTRAJ	14-Sep-16
504960	STEWARTQ	09-Sep-16	518091	APCL	14-Sep-16
522113	TIMKEN	09-Sep-16	523716	ASHIANA	14-Sep-16
532966	TWL	09-Sep-16	500048	BEML	14-Sep-16
533156	VASCONEQ	09-Sep-16	526853	BI	14-Sep-16
532794	ZEEMEDIA	09-Sep-16	500084	CESC	14-Sep-16
534742	ZUARI	09-Sep-16	532696	EDUCOMP	14-Sep-16
500780	ZUARIGLOB	09-Sep-16	526367	GANESHHOUC	14-Sep-16
502355	BALKRISIND	10-Sep-16	511034	JINDRILL	14-Sep-16
500055	BHUSANSTL	10-Sep-16	530299	KOTHARIPRO	14-Sep-16
532282	CASTEXTECH	10-Sep-16	532899	KSCL	14-Sep-16
532873	HDIL	10-Sep-16	531882	KWALITY	14-Sep-16
533207	JPINFRATEC	10-Sep-16	500265	MAHSEAMLES	14-Sep-16
531687	KGL	10-Sep-16	534309	NBCC	14-Sep-16
531497	MADHUCON	10-Sep-16	590086	ORISSAMINE	14-Sep-16

532780	PARSVNATH	10-Sep-16	533569	SRSLTD	14-Sep-16
533107	RDEL	10-Sep-16	520155	STARLOG	14-Sep-16
503811	SIYSIL	10-Sep-16	523754	EPCIN	27-Oct-16
507892	WINSOMEDJ	10-Sep-16	532313	MAHLIFE	27-Oct-16
521070	ALOKTEXT	12-Sep-16	524038	VENLONENT	28-Oct-16

Economic Calendar					
Country	Monday 5th Sept 16	Tuesday 6th Sept 16	Wednesday 7th Sept 16	Thursday 8th Sept 16	Friday 9th Sept 16
US		Final Services PMI , ISM Non-Manufacturing PMI , IBD/TIPP Economic Optimism , Labor Market Conditions Index m/m.	JOLTS Job Openings , RBA Deputy Gov Lowe Speaks .	Unemployment Claims , Natural Gas Storage , Crude Oil Inventories , Consumer Credit m/m .	FOMC Member Rosengren Speaks , Wholesale Inventories m/m .
UK/EURO ZONE	Spanish Services PMI , Italian Services PMI , Services PMI , Retail Sales m/m.	German Factory Orders m/m , Retail PMI .	German Industrial Production m/m , French Trade Balance , Manufacturing Production m/m , MPC Member Cunliffe Speaks , Inflation Report Hearings.	Minimum Bid Rate , French Final Non-Farm Payrolls q/q , ECB Press Conference.	German Trade Balance , Goods Trade Balance , Consumer Inflation Expectations , Eurogroup Meetings.
INDIA					

Narnolia Securities Ltd.

Narnolia Research Lab
 Stellar IT Park | 5th Floor | Office Space No. 6 | Tower-IIInd Plot
 No. C-25 | Sector-62 | Noida | Ph : 0120-4215110

Narnolia Securities Ltd.
 201 | 2nd Floor | Marble Arch Building | 236B-AJC Bose Road Kolkata-
 700 020 Ph : 033-40501500
 Email : narnolia@narnolia.com website :www.narnolia.com

