

SGX NIFTY : 8197 (15 Pt Down)

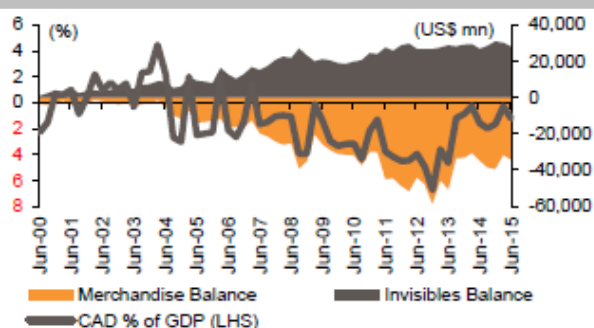
Quote of the Day

"Over the long term, it's hard for a stock to earn a much better return than the business which underlies it earns. If the business earns six percent on capital over forty years and you hold it for that forty years, you're not going to make much different than a six percent return - even if you originally buy it at a huge discount. Conversely, if a business earns eighteen percent on capital over twenty or thirty years, even if you pay an expensive looking price, you'll end up with one hell of a result."

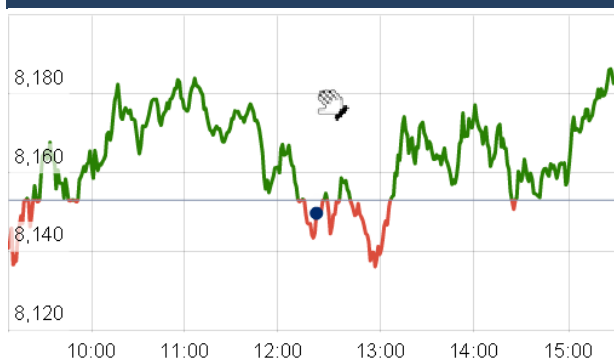
Charlie Munger

Chart of the Day

CAD Vs GDP Trend



Index Action Nifty (7th Oct 15)



Index

Contents	Page	Coverage
News	2	Update
Economic Calendar	3	Update

Market

Name	Value	Change
Sensex	27,035.85	102.97
Nifty	8177.40	24.50
DOW	16,912.29	122.10
NASDAQ	4,791.15	42.79
CAC	4,667.34	6.70
DAX	9,970.40	67.57
FTSE	6,336.35	10.19
NIKKEI	18,230.19	(92.79)
HANG SENG	22,347.98	(167.87)
EW ALL SHARE	14021.31	266.40

Instituional Turnover

FII

Investor	Buy(Cr.)	Sale(Cr.)	Net(Cr.)
07-Oct-15	4094.77	4145.37	(50.60)
Oct,15	24536.44	30074.39	(5537.95)
2015	846493.79	849204.70	(2710.91)

DII

Investor	Buy(Cr.)	Sale(Cr.)	Net(Cr.)
07-Oct-15	1427.23	1645.98	(218.75)
Oct,15	14412.08	9862.71	4549.37
2015	340710.40	294210.07	46500.33

Commodity Price

Commodity/Currencies	Value	
GOLD	26564.00	↓
SILVER	37508.00	↑
CRUDEOIL	47.97	↓
COPPER	343.10	↓
NATURALGAS	162.50	↑
DOLLAR/RS.	64.98	↓
EURO/RS.	73.14	↑
POUND/RS.	99.52	↑

Market Snapshot

Top Price Performers

Top Performers 1D	% Change	Top Performers 1W	% Change	Top Performers 1M	% Change
MIC	20.00	SRS LTD	44.89	KSOILS	166.67
SRS LTD	19.99	MLKFOOD	43.81	FARMAXIND	154.55
TRF	19.98	LITL	43.47	ERAINFRA	122.63
HMT	19.90	XCHANGING	40.82	LITL	97.79
GUJNRECOKE	19.75	IMPEXFERRO	38.80	ANDHRACEMT	89.17

Worst Price Performers

Worst Performers 1D	% Change	Worst Performers 1W	% Change	Worst Performers 1M	% Change
RMMIL	(10.00)	BLUESTINFO	(33.83)	AEGISCHEM	(88.35)
LITL	(9.88)	AMTEKINDIA	(22.13)	AMTEKINDIA	(61.54)
CANDC	(9.79)	HELIOSMATH	(22.09)	GOKUL	(33.04)
GEMINI	(8.33)	TUNITEX	(19.51)	HELIOSMATH	(31.07)
GLOBALCA	(8.00)	ADINATHBI	(18.52)	ROLATAN	(30.44)

Top News

- **KEC International** has won orders worth Rs 668 crore, which would be 8-10 percent of company's margins. The company's orderbook stands at Rs 10,000 crore, of which orders worth Rs 400 crore are from the transmission and distribution business, he says, adding they will be executed in another 12-15 months. The cable orders are worth Rs 160 crore and solar business worth Rs 111 crore

- **Punj Lloyd** has forayed into the power transmission and distribution sector as it bagged two projects in the segment from Power Grid Corp. The company in a regulatory filing said that it has won Rs 488-crore worth projects in the power sector, including "its first two wins in the transmission and distribution (T&D) segment.

- **In a relief for US drug major Merck Sharp and Dohme (MSD), Delhi High Court** restrained Indian firm Glenmark Pharmaceuticals from manufacturing and selling its anti-diabetes drugs Zita and Zita-Met, saying it has infringed patent of the American company. The bench had, however, on Glenmark's oral plea to allow it to sell its goods already in the market, clarified that it "may sell such of the products which are already in the market i.e in possession of its distributors and retailers

- **GTL Infrastructure** will consider bondholders' request to convert FCCBs worth USD 48,000 into equity shares. The company had issued a series of foreign currency convertible bonds (FCCBs) worth USD 242.57 million in 2012. The bonds are due in 2017.

- **The Rs 740 crore rights issue of IL&FS Transportation Networks** will open on October 15 and the proceeds will be utilised mainly for repaying loans. The company will issue over 8.22 crore equity shares of face value of Rs 10 each for cash at Rs 90 per share for an aggregate amount of up to Rs 740.16 crore to the existing investors.

- **NTPC - SAIL Power Company** has got environment clearance for expansion of its Durgapur captive power plant in West Bengal with an investment of Rs 362 crore. Based on the recommendations of the Expert Appraisal Committee, the Environment Ministry has given the environment clearance to the project 'Durgapur Captive Power Project-III (2X20 MW)' in West Bengal by NTPC-SAIL Power Company

- **NMDC** said it has incorporated a wholly-owned subsidiary company for developing a steel plant in Jharkhand through the Special Purpose Vehicle. NMDC at present produces about 30 million tonnes of iron ore. It has set a target of Rs 13,500 crore in turnover for the current fiscal as per a pact signed with the government in which it has also set a production target of 35 million tonnes for the current fiscal.

- **U.S. Consumer Credit** rose to a seasonally adjusted 16.02B, from 18.94B in the preceding month whose figure was revised down from 19.10B. Analysts had expected U.S. Consumer Credit to rise 19.00B last month.

- **U.S. Gasoline Inventories** rose to a seasonally adjusted annual rate of 1.910M, from 3.254M in the preceding quarter. Analysts had expected U.S. Gasoline Inventories to rise 0.467M in the last quarter.

- **Instituto Brasileiro de Geografia e Estatistica said that Brazilian CPI** fell to 9.49%, from 9.53% in the preceding month. Analysts had expected Brazilian CPI to fall to 9.49% last month.

- **U.S. trade balance** fell to a seasonally adjusted -48.33B, from -41.81B in the preceding month whose figure was revised up from -41.90B. Analysts had expected U.S. trade balance to fall to -47.40B last month.

Result Calendar Q2FY16

BSE Code	Company Name	Date	BSE Code	Company Name	Date
533229	BAJAJCORP	07-Oct-15	513010	TATASPONGE	16-Oct-15
512161	8KMILES	08-Oct-15	532218	SOUTHBANK	17-Oct-15
539149	ICSL	09-Oct-15	532262	TCIIND	17-Oct-15
532187	INDUSINDBK	09-Oct-15	506690	UNICHEMLAB	17-Oct-15
533402	INNOIND	09-Oct-15	511288	GRUH	19-Oct-15
530173	OSCARGLO	09-Oct-15	532281	HCLTECH	19-Oct-15
532981	ANULABS	10-Oct-15	519552	HERITGFOOD	19-Oct-15
533569	SRSLTD	10-Oct-15	502937	KESORAMIND	19-Oct-15
526638	TEXELIN	10-Oct-15	521248	KITEX	19-Oct-15
531247	ALPHA	12-Oct-15	500266	MAHSCOOTER	19-Oct-15
500209	INFY	12-Oct-15	532522	PETRONET	19-Oct-15
524622	ISTRNETWK	12-Oct-15	532987	RBL	19-Oct-15
523445	RIIL	12-Oct-15	533228	SKSMICRO	19-Oct-15
524661	WELCURE	12-Oct-15	513517	STEELCAS	19-Oct-15
532772	DCBBANK	13-Oct-15	533158	THANGAMAYL	19-Oct-15
538708	ETIL	13-Oct-15	504966	TINPLATE	19-Oct-15
507753	SREERAYA	13-Oct-15	500410	ACC	20-Oct-15
532540	TCS	13-Oct-15	532978	BAJAJFINSV	20-Oct-15
531894	VATSAMUS	13-Oct-15	500034	BAJFINANCE	20-Oct-15
500089	DICIND	14-Oct-15	532523	BIOCON	20-Oct-15
509567	GOACARBON	14-Oct-15	511196	CANFINHOME	20-Oct-15
500189	HINDUJAVEN	14-Oct-15	508906	EVERESTIND	20-Oct-15
500696	HINDUNILVR	14-Oct-15	507488	GMBREW	20-Oct-15
532798	NETWORK18	14-Oct-15	533047	IMFA	20-Oct-15
507649	RASOI	14-Oct-15	502330	IPAPPM	20-Oct-15
517506	TTKPRESTIG	14-Oct-15	532926	JYOTHYLAB	20-Oct-15
532800	TV18BRDCST	14-Oct-15	500233	KAJARIACER	20-Oct-15
505537	ZEEL	14-Oct-15	526299	MPHASIS	20-Oct-15
526433	ASMTEC	15-Oct-15	539015	ORTEL	20-Oct-15
532175	CYIENT	15-Oct-15	532661	RML	20-Oct-15
533151	DBCORP	15-Oct-15	532977	BAJAJ-AUTO	21-Oct-15
590003	KARURVYSYA	15-Oct-15	500490	BAJAJHLDNG	21-Oct-15
534690	LAKSHVILAS	15-Oct-15	500180	HDFCBANK	21-Oct-15
500253	LICHSGFIN	15-Oct-15	500228	JSWSTEEL	21-Oct-15
532819	MINDTREE	15-Oct-15	532720	M&MFIN	21-Oct-15
502742	SINTEX	15-Oct-15	532756	MAHINDCIE	21-Oct-15
513434	TATAMETALI	15-Oct-15	514142	TTL	21-Oct-15
532953	VGUARD	15-Oct-15	507685	WIPRO	21-Oct-15
506597	AMAL	16-Oct-15	532321	CADILAHC	22-Oct-15
526847	ASHSI	16-Oct-15	532628	3IINFOTECH	23-Oct-15
500215	ATFL	16-Oct-15	520119	ASAL	23-Oct-15
501833	CHOWGULSTM	16-Oct-15	500820	ASIANPAINT	23-Oct-15
505737	INTLCOMBQ	16-Oct-15	511243	CHOLAFIN	23-Oct-15
517447	RSSOFTWARE	16-Oct-15	513262	SSWL	23-Oct-15
539353	SWARAJAUTO	16-Oct-15	532424	GODREJCP	24-Oct-15
500407	SWARAJENG	16-Oct-15	533179	PERSISTENT	25-Oct-15

532888	ASIANILES	26-Oct-15	501110	SUNRINV	30-Oct-15
500067	BLUESTARCO	26-Oct-15	500114	TITAN	30-Oct-15
500010	HDFC	26-Oct-15	526125	ARHNTTO	31-Oct-15
532988	RANEENGINE	26-Oct-15	500660	GLAXO	31-Oct-15
538268	WONDERLA	26-Oct-15	532659	IDFC	31-Oct-15
532215	AXISBANK	27-Oct-15	532644	JKCEMENT	31-Oct-15
503960	BBL	27-Oct-15	531221	MAYURFL	31-Oct-15
531530	BETALA	27-Oct-15	526935	MBPARIKH	31-Oct-15
506395	COROMANDEL	27-Oct-15	526891	MKTCREAT	31-Oct-15
511676	GICHSGFIN	27-Oct-15	521234	SRINACHA	31-Oct-15
532504	NAVINFLUOR	27-Oct-15	506655	SUDARSCEM	31-Oct-15
531209	NUCLEUS	27-Oct-15	524038	VENLONENT	31-Oct-15
523642	PIIND	27-Oct-15	506590	PHILIPCARB	02-Nov-15
500008	AMARAJABAT	28-Oct-15	500403	SUNDRMFAST	02-Nov-15
500425	AMBUJACEM	28-Oct-15	507747	TTKHEALTH	02-Nov-15
500096	DABUR	28-Oct-15	523411	ADCINDIA	03-Nov-15
531600	GOGIACAP	28-Oct-15	509480	BERGEPAIN	03-Nov-15
532662	HTMEDIA	28-Oct-15	500338	PRISMCEM	03-Nov-15
533293	KIRLOSENG	28-Oct-15	532755	TECHM	03-Nov-15
500264	MAFATIND	28-Oct-15	500414	TIMEX	03-Nov-15
502180	SHREDIGCEM	28-Oct-15	532548	CENTURYPLY	04-Nov-15
532498	SHRIRAMCIT	28-Oct-15	509162	INDAG	04-Nov-15
500830	COLPAL	29-Oct-15	532156	VAIBHAVGBL	04-Nov-15
500124	DRREDDY	29-Oct-15	519606	INTEGFD	05-Nov-15
517449	MAGNAELQ	29-Oct-15	531213	MANAPPURAM	05-Nov-15
500452	NEPCAGRO	29-Oct-15	532097	MUKANDENGG	05-Nov-15
500301	NEPCMICON	29-Oct-15	520151	SHREYAS	05-Nov-15
531077	NEPCPAPER	29-Oct-15	500470	TATASTEEL	05-Nov-15
521192	NEPCTEX	29-Oct-15	523736	DPL	06-Nov-15
500790	NESTLEIND	29-Oct-15	500164	GODREJIND	06-Nov-15
500313	OILCOUNTUB	29-Oct-15	500520	M&M	06-Nov-15
509930	SUPREMEIND	29-Oct-15	532777	NAUKRI	06-Nov-15
500420	TORNTPHARM	29-Oct-15	500260	RAMCOCEM	06-Nov-15
500027	ATUL	30-Oct-15	507966	RASRESOR	06-Nov-15
500049	BEL	30-Oct-15	532133	IFGLREFRAC	07-Nov-15
500147	CMIFPE	30-Oct-15	520113	VESUVIUS	07-Nov-15
523754	EPCIN	30-Oct-15	523248	MACPLASQ	08-Nov-15
500247	KOTAKBANK	30-Oct-15	505800	RANEHOLDIN	09-Nov-15
532652	KTKBANK	30-Oct-15	522113	TIMKEN	09-Nov-15
532313	MAHLIFE	30-Oct-15	530897	NGIND	13-Nov-15
531049	NEELKAN	30-Oct-15	526947	LAOPALA	14-Nov-15
500730	NOCIL	30-Oct-15	500387	SHREECEM	14-Nov-15
502420	ORIENTPPR	30-Oct-15	511626	RRFIN	14-Dec-15
517168	SUBROS	30-Oct-15			

Economic Calendar

Country	Monday 5th Oct 15	Tuesday 6th Oct 15	Wednesday 7th Oct 15	Thursday 8th Oct 15	Friday 9th Oct 15
US	Final Services PMI , ISM Non-Manufacturing PMI , Labor Market Conditions Index m/m .	Trade Balance , IBD/TIPP Economic Optimism , RICS House Price Balance , BRC Shop Price Index y/y .	Crude Oil Inventories , Consumer Credit m/m .	Unemployment Claims , Natural Gas Storage , 10-y Bond Auction , FOMC Meeting Minutes .	Import Prices m/m , Wholesale Inventories m/m , Federal Budget Balance .
UK/EURO ZONE	Services PMI , Retail Sales m/m , Sentix Investor Confidence , French Final Services PMI ,	German Factory Orders m/m , Trade Balance , Housing Equity Withdrawal q/q ,	Trade Balance , IBD/TIPP Economic Optimism , RICS House Price Balance , BRC Shop Price Index y/y .	MPC Official Bank Rate Votes , Official Bank Rate , Asset Purchase Facility , MPC Asset Purchase Facility Votes , MPC Rate Statement , Monetary Policy Summary .	French Industrial Production m/m , Italian Industrial Production m/m , Construction Output m/m , Employment Change , Unemployment Rate .
INDIA	HSBC India Services PMI				



(Regn. No. : INP 000004011)

Narnolia Securities Ltd.

Narnolia Research Lab

Stellar IT Park | 5th Floor | Office Space No. 6 | Tower-IInd Plot No. C-25 | Sector-62 | Noida
| Ph : 0120-4215110

Central Strategy Desk - Kolkata

124 | 1st Floor | 7/1 Lords Sinha Road | Kolkata - 71
Ph : 033-22821500 | M : 93347 14418, 98302 69810