

KEY LEVELS

Support 1 : 10620
Support 1 : 10600

Resistance 1 : 10780
Resistance 2 : 10800

Event Today

Result

ARVIND , DHAMPURSUG , EICHERMOT
EIDPARRY , FEDERALBNK , GMDCLTD
HIKAL , INDRAMEDCO , JINDALSTEL
JUBILANT , LINDEINDIA , MAGMA
NAVINFLUOR , PARAGMILK
SHARDACROP , SIS , SUNDRMFAST
THEMISMED

Concall

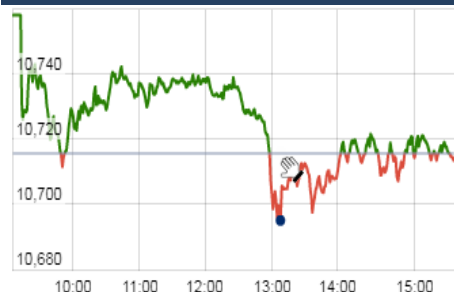
SKF : 10:30 AM ,MHIL : 11:00 PM,
Phoenix : 12:00 PM , Tube Inv: 2:00 PM
CRISIL : 2:00 PM , ABB India : 2:30PM
Dwarikesh , Huhtamaki : 3:00 PM
Mas Financial, Arvind , ZEE : 4:00 PM
Vijaya Bank : 4:15 PM, Sadbhav: 4:30 PM

Jubilant, Sintex : 5:00 PM
Eicher Motors : 5:30 PM
Federal Bank : 6:00 PM

Interim Dividend

HCLTECH : Rs 2/-
(Exdate : 9.5.2018)

Nifty Intraday Chart



Market Outlook

Indian equities gave a range bound and choppy movement throughout the day on Monday and after opening on a subdued note, Nifty traded in the narrow band of 10689-10758. At the end of the day the index closed near flat at 10717.80. The midcap index closed in red while the small cap index gained 0.6%.

On the sectoral front, some buying interest was witnessed in banking stocks while the other major indices remained subdued. The breadth of the market was slightly negative with more declines than advances.

Nifty Range bound!!

Tuesday, Nifty opened around 10757, made a high of 10758, then after making a low of 10689 closed around 10717(+2), however entire day trading range was 69 points.

Nifty consolidated with tad negative bias. It may continue to consolidate for some more time before witnessing a breakout on either side. For initiating a fresh leg, it has to cross major hurdle of 10780-10800 zone above which can extend up till 10920 levels.

Key resistances are around 10780-10800 and immediate supports are seen around 10620-10600.

Market

Market	Value	% Change
Morning Traded Market		
SGX NIFTY	10,705.00	-0.34%
NIKKIE	22,397.64	-0.50%
HANG SENG	30,362.26	-0.04%
Yesterday Closing Market		
Sensex	35,216.32	0.02%
Nifty	10,717.80	0.02%
DOW	24,360.21	0.01%
NASDAQ	7,266.90	0.02%
CAC	5,521.93	-0.17%
DAX	12,912.21	-0.28%
FTSE	7,565.75	-0.02%
EW ALL SHARE	19,570.86	0.02%

% Change in 1 day

Commodity Price (Yesterday Closing)

Commodity/Currencies	Value	% Change
GOLD	31210.00	-0.15%
SILVER	39797.00	-0.29%
CRUDEOIL	76.65	2.40%
NATURALGAS	183.10	-0.92%
DOLLAR/RS.	67.08	-0.09%
EURO/RS.	79.59	-0.48%
POUND/RS.	90.57	-0.32%

% Change in 1 day

Institutional Turnover

FII			
Investor	Buy(Cr.)	Sale(Cr.)	Net(Cr.)
08-May-18	6013	6110	(97)
May-18	25853	28888	(3035)
2018	472848	484886	(12037)
DII			
Investor	Buy(Cr.)	Sale(Cr.)	Net(Cr.)
08-May-18	4112	3189	923
May-18	16445	13813	2631
2018	339099	303527	35572

Quote of the Day : "When a management with a reputation for brilliance tackles a business with a reputation for bad economics, it is the reputation of the business that remains intact." **Warren Buffett**

Indostar Capital Finance Limited : IPO Note**"SUBSCRIBE for
Long term"****9th May 2018**

Indostar Capital Finance Limited currently derives 70% revenue from corporate term financing solutions and loans to SMEs and 30% from vehicle and housing finance. Vehicle financing operations started from November 2017 and housing finance operations started only from March 2018. The recent rise in NPA across the industry remains the key risk in the company. Also, there is a lot of competition in vehicle and Home financing space which should keep the yield competitive. The company has ROE of 7.7% and RoA of 3.6%. The company is being offered cheap at 1.9times FY18E P/B. We recommend SUBSCRIBE for Long term Investors.

IRB**"BUY"****9th May 2018**

IRB was struggling to get new orders but once the management has started focusing on HAM projects company has witness Rs.8900 Cr of order inflow in just 2 months. With this strong order inflow order book stands at Rs.15000 Cr, which is highest in last 30 quarters and support 30-35% CAGR EPC revenue growth over FY18-20. However the EBITDA margin is lower on HAM projects but at bottom line is at par with BoT projects. IRB has completed construction on Solapur Yedeshi & Kaithal Rajasthan and subsequently tooling has commenced. Mumbai Pune toll concession period expire in Aug 2019 which currently contributes highest in toll revenue. However, tolling on new projects will keep Toll revenue/profit sustainable. We value IRB at 1.5x (Avg. of last 5 years) book value of FY20E and arrived at target price of Rs.320 and recommend "BUY".

*For details, refer to our daily report- *India Equity Analytics***Top News****>> Jubilant Foodworks 4QFY18 concall updates**

Domino's Store in 4QFY18- opened 7; closed - none. Dunkin Stores in 4QFY18- opened-1; closed-8.

Online sales now contributing 63% of delievery sales. And the company will continue to invest in digital technology to improve better online services in FY19.

Same store growth for Dominio's is 13.9% in FY18 and 26.5% in 4QFY18 (highest in 6 years).

Increased the dividend to Rs.5/equity share of Rs.10 each.

Issue of bonus share in the ratio 1:1.

Announced joint venture with Golden Harvest QSR Limited to launch Domino's Pizza in Bangladesh.

Company will continue to launch everyday value of Rs.99 in regular size of pizza and a group of 2 in beginning of FY19. This will help to attract new customers in FY19

Management said they will bring several new measures which will give profitable outcome in FY19.

Comnanv is on the path to achieve break even in the last quarter

>> Tata Steel said that its European unit has begun to look for buyers for its non-core units after a review of all its businesses.

Europe Tata Steel Europe has recently conducted a detailed portfolio review of all its businesses to assess the strategic fit and the future potential.

Based on the above review, Tata Steel Europe has begun a process of seeking buyers for business units which supply products to niche markets, allowing the company to continue to strengthen its focus on strategic strip products and markets

>> Greenply Industries Mgt Guideline : Company is eyeing up to Rs 2,000 crore turnover from its engineered panel division, which mainly consists of medium-density fibreboard products, by 2019-20 on the back of a new production facility in Andhra Pradesh that may begin commercial production by July

The new plant, set up with an investment of Rs 800 crore is located in Chittoor, Andhra Pradesh, and will cater to the demand from South India and exports.

Through this plant we will launch new products in the Southern market, which we were not able to do earlier due to freight costs

The Chittoor medium-density fibreboard (MDF) plant would have an annual production capacity of 3,60,000 cubic meters (CBM). Greenply has an MDF plant in Pantnagar, Uttarakhand.

Company expect share of exports in our sales to go up from 10 per cent at present to 30 per cent by the end of next fiscal,

Post the commissioning of the new plant in Chittoor, with an already operational Rudrapur plant in Patnanagar, Uttarakhand, the company will have a combined annual capacity of 540,000 cubic metres.

>> Lemon Tree Mgt Guideline : Company will be investing Rs 850 crore in the next three years for expanding its footprint in the country. They have earmarked a total of Rs 1,700 crore for adding 1,500 rooms, which are currently under construction and expected to be completed by financial year 2021 and spent half of the total budget.

The total capital that will be deployed in these 1,500 rooms will be about Rs 1,700 crore. Of this roughly half of it has already been deployed and another half of it will be deployed near completion by FY21. All the 1500 rooms are available by Fy 21

It also plans to gradually reduce the proportion of hotels it owns and focus more on managing hotels under its brand.

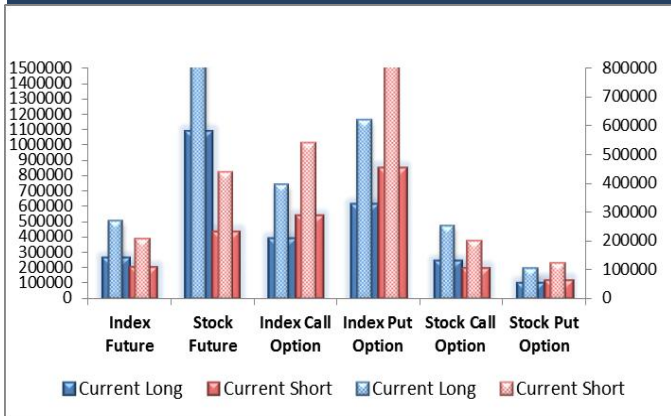
The new hotel has 85 rooms and will cater to travellers looking for value-for-money accommodations in the city and with this new opening, Lemon Tree now holds a cumulative inventory of 663 rooms in the city,

Block Deal

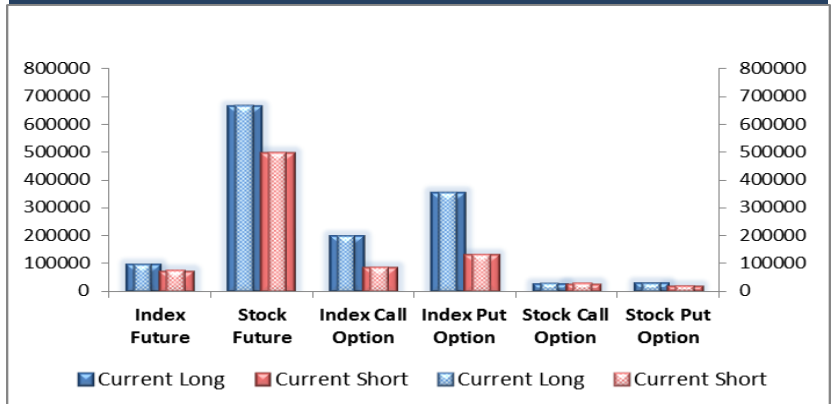
Exchange	Deal Date	Company	Client Name	Deal Type	Quantity	Price
NSE	08-May-18	JUSTDIAL	SHAASTRA SECURITIES TRADING PRIVATE LIMITED	BUY	410824	433
NSE	08-May-18	KARDA	A S CONFIN PVT.LTD.	BUY	150431	200
NSE	08-May-18	KARDA	BHUMIKA SUMIT DESAI	BUY	123000	200
NSE	08-May-18	KARDA	MARFATIA NISHIL SURENDRA	BUY	130403	199
NSE	08-May-18	MAHASTEEL	BHAVESH RAJNIKANT MEHTA	BUY	69246	90
NSE	08-May-18	MITTAL	CHOICE EQUITY BROKING PRIVATE LIMITED	BUY	60000	21
NSE	08-May-18	PCJEWELLER	CHANDARANA INTERMEDIARIES BROKERS P. LTD	BUY	2062230	210
NSE	08-May-18	PCJEWELLER	CROSSLAND TRADING CO	BUY	7289850	209
NSE	08-May-18	PCJEWELLER	GENUINE STOCK BROKERS PVT LTD	BUY	3532034	209
NSE	08-May-18	PCJEWELLER	GKN SECURITIES	BUY	4111692	216
NSE	08-May-18	PCJEWELLER	N.K. SECURITIES	BUY	3819947	211
NSE	08-May-18	PCJEWELLER	PURITY TRADEMAX LLP	BUY	3672156	211
NSE	08-May-18	PCJEWELLER	QE SECURITIES	BUY	2283711	211
NSE	08-May-18	PCJEWELLER	SHAASTRA SECURITIES TRADING PRIVATE LIMITED	BUY	3269856	211
NSE	08-May-18	PCJEWELLER	VAIBHAV STOCK & DERIVATIVES BROKING PVT. LTD	BUY	10746100	215
NSE	08-May-18	PCJEWELLER	WAY2WEALTH SECURITIES P LTD	BUY	3909431	213
NSE	08-May-18	RUCHISOYA	MARFATIA NISHIL SURENDRA	BUY	2415405	14
NSE	08-May-18	SMARTLINK	MONEY GROW INVESTMENT	BUY	126431	115
NSE	08-May-18	SUNDARAM	GOEL NIKHIL	BUY	8078111	3
NSE	08-May-18	EVEREADY	AMANSA HOLDING PRIVATE LTD.	SELL	418000	292
NSE	08-May-18	JUSTDIAL	SHAASTRA SECURITIES TRADING PRIVATE LIMITED	SELL	410824	433
NSE	08-May-18	KARDA	A S CONFIN PVT.LTD.	SELL	150431	199
NSE	08-May-18	KARDA	BHUMIKA SUMIT DESAI	SELL	12657	197
NSE	08-May-18	KARDA	MARFATIA NISHIL SURENDRA	SELL	130403	199
NSE	08-May-18	MAHASTEEL	BHAVESH RAJNIKANT MEHTA	SELL	69246	89
NSE	08-May-18	PCJEWELLER	CHANDARANA INTERMEDIARIES BROKERS P. LTD	SELL	1929261	213
NSE	08-May-18	PCJEWELLER	CROSSLAND TRADING CO	SELL	7289533	209
NSE	08-May-18	PCJEWELLER	GENUINE STOCK BROKERS PVT LTD	SELL	3532034	210
NSE	08-May-18	PCJEWELLER	GKN SECURITIES	SELL	4111692	216
NSE	08-May-18	PCJEWELLER	N.K. SECURITIES	SELL	3819947	211
NSE	08-May-18	PCJEWELLER	PURITY TRADEMAX LLP	SELL	3672156	212
NSE	08-May-18	PCJEWELLER	QE SECURITIES	SELL	2278723	210
NSE	08-May-18	PCJEWELLER	SHAASTRA SECURITIES TRADING PRIVATE LIMITED	SELL	3269856	211
NSE	08-May-18	PCJEWELLER	VAIBHAV STOCK & DERIVATIVES BROKING PVT. LTD	SELL	10746100	215
NSE	08-May-18	PCJEWELLER	WAY2WEALTH SECURITIES P LTD	SELL	3909431	213
NSE	08-May-18	PNBHOUSING	QUALITY INVESTMENT HOLDINGS	SELL	4000000	1280
NSE	08-May-18	RENUKA	KHANDEPAR INVESTMENTS PRIVATE LIMITED	SELL	20457738	16
NSE	08-May-18	RUCHISOYA	DISHA FOUNDATION	SELL	2094451	13
NSE	08-May-18	RUCHISOYA	MARFATIA NISHIL SURENDRA	SELL	2415405	14
NSE	08-May-18	SMARTLINK	MONEY GROW INVESTMENT	SELL	126431	115
NSE	08-May-18	SOLEX	SOMANI VINOD	SELL	26000	46
NSE	08-May-18	SUNDARAM	GOEL NIKHIL	SELL	8078111	2
NSE	08-May-18	SUNDARAM	LTS INVESTMENT FUND LTD	SELL	6850000	3
NSE	08-May-18	SUNILHITEC	MONEYWISE FINANCIAL SERVICES PRIVATE LTD	SELL	3471392	5

F&O OPEN INTEREST (Number of Contracts)

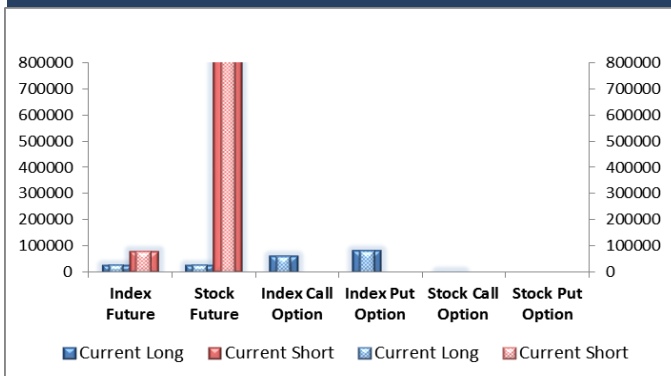
Individual



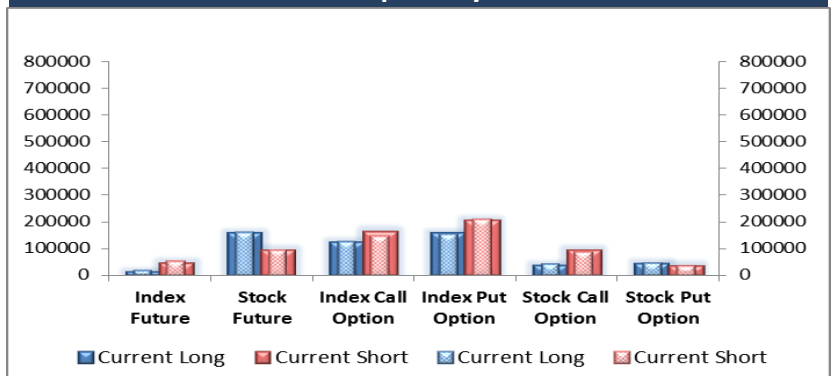
Foreign Institutions



Domestic Institutions

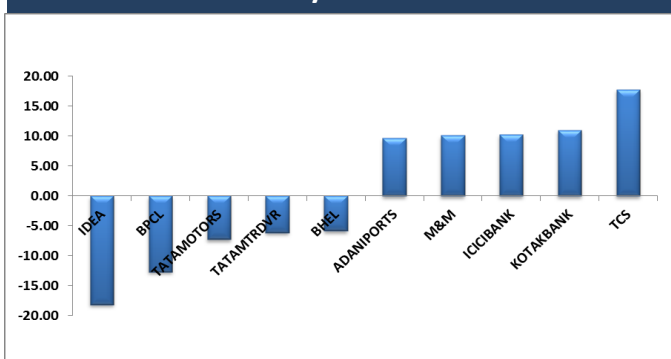


Proprietary

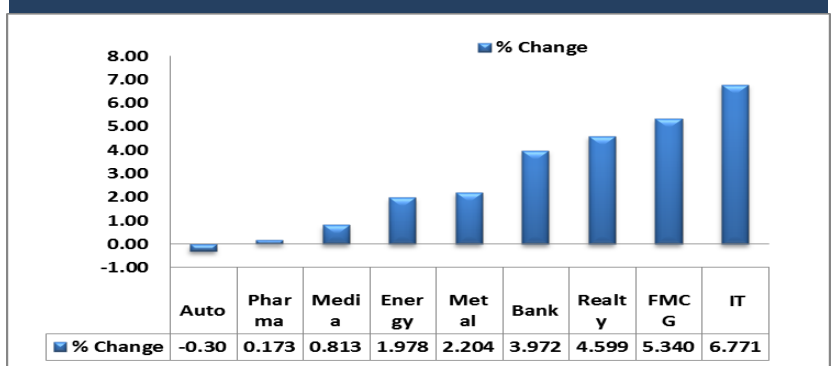


MARKET MOVERS (1 MONTH CHANGE)

Nifty Movers



NSE Sectoral Indices Performance



Result Calendar Q4FY18

BSE Code	Company Name	Date	BSE Code	Company Name	Date
532774	AFL	09-May-18	500820	ASIANPAINT	10-May-18
533227	AHLEAST	09-May-18	503960	BBL	10-May-18
540616	ARTEMIS	09-May-18	509438	BENARAS	10-May-18
500101	ARVIND	09-May-18	511501	BHARAT	10-May-18
538777	ASIACAP	09-May-18	500085	CHAMBLFERT	10-May-18
501833	CHOWGULSTM	09-May-18	541269	CHEMFABALKA	10-May-18
532173	CYBERTECH	09-May-18	500110	CHENNPETRO	10-May-18
500119	DHAMPURSUG	09-May-18	531346	EASTRED	10-May-18
517437	DUTRON	09-May-18	520081	ECSTSTL	10-May-18
505200	EICHERMOT	09-May-18	500123	ELANTAS	10-May-18
500125	EIDPARRY	09-May-18	523768	GUJBOROS	10-May-18
530117	FAIRCHEM	09-May-18	532814	INDIANB	10-May-18
500469	FEDERALBNK	09-May-18	500210	INGERRAND	10-May-18
532181	GMDCLTD	09-May-18	509496	ITDCEM	10-May-18
506879	GUJTHEM	09-May-18	533320	JUBLINDS	10-May-18
524735	HIKAL	09-May-18	505890	KENNAMET	10-May-18
504092	INDOKEM	09-May-18	530813	KRBL	10-May-18
532150	INDRAMEDCO	09-May-18	540222	LAURUSLABS	10-May-18
502901	JAMSHRI	09-May-18	526299	MPHASIS	10-May-18
538794	JETINFRA	09-May-18	508989	NAVNETEDUL	10-May-18
532286	JINDALSTEL	09-May-18	500790	NESTLEIND	10-May-18
530019	JUBILANT	09-May-18	532698	NITINSPIN	10-May-18
523207	KOKUYOCMLN	09-May-18	500672	NOVARTIND	10-May-18
523457	LINDEINDIA	09-May-18	511632	OLYMTFI	10-May-18
524000	MAGMA	09-May-18	531768	POLYMED	10-May-18
521018	MARALOVER	09-May-18	540544	PSPPROJECT	10-May-18
540749	MASFIN	09-May-18	509220	PTL	10-May-18
532504	NAVINFLUOR	09-May-18	539678	QUICKHEAL	10-May-18
500314	ORIENTHOT	09-May-18	517522	RAJGLOWIR	10-May-18
530555	PARACABLES	09-May-18	530815	REFNOL	10-May-18
539889	PARAGMILK	09-May-18	500350	RSWM	10-May-18
513532	PRADPME	09-May-18	500367	RUBFILA	10-May-18
506906	SCBL	09-May-18	540425	SHANKARA	10-May-18
538666	SHARDACROP	09-May-18	514454	SOUTLAT	10-May-18
540653	SINTEXPLAST	09-May-18	500483	TATACOMM	10-May-18
539584	SIPTL	09-May-18	504973	TIFHL	10-May-18
540673	SIS	09-May-18	500114	TITAN	10-May-18
500403	SUNDRMFAST	09-May-18	532515	TVTODAY	10-May-18
532284	TCFCFINQ	09-May-18	530131	UDAICEMENT	10-May-18
530199	THEMISMED	09-May-18	539874	UJJIVAN	10-May-18
538706	ULTRACAB	09-May-18	532477	UNIONBANK	10-May-18
539097	YOGYA	09-May-18	524394	VIMTALABS	10-May-18
512599	ADANIENT	10-May-18	532757	VOLTAMP	10-May-18
539254	ADANITRANS	10-May-18	532553	WELENT	10-May-18
500710	AKZOINDIA	10-May-18	505537	ZEEL	10-May-18
500877	APOLLOTYRE	10-May-18	524208	AARTIIND	11-May-18
526125	ARHNTTO	10-May-18	535755	ABFRL	11-May-18

532480	ALBK	11-May-18	532513	TVSELECT	11-May-18
532335	AMBICAAGAR	11-May-18	532505	UCOBANK	11-May-18
512195	BENTCOM	11-May-18	531266	VSTILLERS	11-May-18
500058	BIHSPONG	11-May-18	505533	WESTLIFE	11-May-18
514045	BSL	11-May-18	512367	ZSHERAPR	11-May-18
532483	CANBK	11-May-18	512291	ZSPEEDCO	11-May-18
532121	DENABANK	11-May-18	533029	ALKALI	12-May-18
505714	GABRIEL	11-May-18	500032	BAJAJHIND	12-May-18
530343	GENUSPOWER	11-May-18	532726	GALLANTT	12-May-18
507815	GILLETTE	11-May-18	533265	GALLISPAT	12-May-18
509488	GRAPHITE	11-May-18	500186	HINDOILEXP	12-May-18
500676	GSKCONS	11-May-18	531505	INDERGR	12-May-18
539336	GUJGAS	11-May-18	532644	JKCEMENT	12-May-18
517354	HAVELLS	11-May-18	513509	KALYANIFRG	12-May-18
517571	INDLMETER	11-May-18	504392	KRISHNA	12-May-18
530601	JAGSONFI	11-May-18	533007	LGBFORGE	12-May-18
502937	KESORAMIND	11-May-18	540192	LKPSEC	12-May-18
507948	KEYCORP	11-May-18	530219	NUTRICIRCLE	12-May-18
540775	KHADIM	11-May-18	520021	OMAXAUTO	12-May-18
500241	KIRLOSIBROS	11-May-18	500315	ORIENTBANK	12-May-18
539521	NAVIGANT	11-May-18	533344	PFS	12-May-18
532529	NDTV	11-May-18	507966	RASRESOR	12-May-18
524558	NEULANLAB	11-May-18	532005	SAMINDUS	12-May-18
540769	NIACL	11-May-18	532669	SBTL	12-May-18
540204	NIDL	11-May-18	524546	SHABCHM	12-May-18
523385	NILKAMAL	11-May-18	539659	VIDLI	12-May-18
532466	OFSS	11-May-18	524200	VINATIORGA	12-May-18
517536	ONWARDTEC	11-May-18	502986	VTL	12-May-18
500459	PGHH	11-May-18	512165	ABANSENT	14-May-18
532647	PROVOGE	11-May-18	500488	ABBOTINDIA	14-May-18
532891	PURVA	11-May-18	539493	ADHARSHILA	14-May-18
500339	RAIN	11-May-18	539177	AIIL	14-May-18
530517	RELAXO	11-May-18	538465	AMARSEC	14-May-18
533284	RPPINFRA	11-May-18	540649	AVADHSUGAR	14-May-18
532163	SAREGAMA	11-May-18	530999	BALAMINES	14-May-18
523449	SHARP	11-May-18	500067	BLUESTARCO	14-May-18
520086	SICAL	11-May-18	500020	BOMDYEING	14-May-18
539494	SMARTFIN	11-May-18	522231	CONART	14-May-18
532419	SMARTLINK	11-May-18	540652	CTCL	14-May-18
532725	SOLARINDS	11-May-18	530843	CUPID	14-May-18
524667	SOTL	11-May-18	531306	DHPIND	14-May-18
500285	SPICEJET	11-May-18	526483	EDJEXEL	14-May-18
539217	SRESTHA	11-May-18	511716	ESCORTSFIN	14-May-18
532733	SUNTV	11-May-18	539032	FRASER	14-May-18
532782	SUTLEJTEX	11-May-18	540647	GANGESSEC	14-May-18
539353	SWARAJAUTO	11-May-18	540743	GODREJAGRO	14-May-18
500800	TATAGLOBAL	11-May-18	506858	GUJPETR	14-May-18
540955	TDSL	11-May-18	500696	HINDUNILVR	14-May-18
511730	TRCFIN	11-May-18	526217	HITECHCORP	14-May-18

539337	HKT	14-May-18	540153	ENDURANCE	15-May-18
517174	HONAUT	14-May-18	532518	FLORENCE	15-May-18
538838	ICL	14-May-18	530855	GDLLEAS	15-May-18
530747	INDOASIAF	14-May-18	530979	INDIAHOME	15-May-18
539005	JAYATMA	14-May-18	506222	INEOSSTYRO	15-May-18
501311	JAYBHCR	14-May-18	536868	INTELSOFT	15-May-18
532162	JKPAPER	14-May-18	538564	JAMESWARREN	15-May-18
538092	JOONKTOLL	14-May-18	532605	JBMA	15-May-18
507779	KANPRPLA	14-May-18	532771	JHS	15-May-18
501151	KARTKIN	14-May-18	500227	JINDALPOLY	15-May-18
532714	KEC	14-May-18	531904	KARUNACAB	15-May-18
535136	KFL	14-May-18	537750	KIRANVYPAR	15-May-18
535387	LAKHOTIA	14-May-18	532652	KTKBANK	15-May-18
539524	LALPATHLAB	14-May-18	500257	LUPIN	15-May-18
509048	LANCORHOL	14-May-18	540650	MAGADHSUGAR	15-May-18
500267	MAJESAUT	14-May-18	502157	MANGLMCEM	15-May-18
532105	MEGFI	14-May-18	531456	MINAXI	15-May-18
539594	MISHTANN	14-May-18	524084	MONSANTO	15-May-18
539289	MJCO	14-May-18	500109	MRPL	15-May-18
531039	MSECURI	14-May-18	531157	ORGCOAT	15-May-18
502405	MYSPAPE	14-May-18	523151	OTCO	15-May-18
530129	NILE	14-May-18	523642	PIIND	15-May-18
500307	NIRLON	14-May-18	513403	PMTELELIN	15-May-18
516082	NRAGRINDQ	14-May-18	532461	PNB	15-May-18
530173	OSCARGLO	14-May-18	507300	RAVALSUGAR	15-May-18
540492	PGL	14-May-18	532712	RCOM	15-May-18
532254	POLARIS	14-May-18	519191	RGRL	15-May-18
500354	RAJSREESUG	14-May-18	530075	SELAN	15-May-18
540143	SAGARSOFT	14-May-18	531431	SHAKTIPUMP	15-May-18
539392	SANGFROID	14-May-18	538685	SHEMAROO	15-May-18
531323	SANTASPN	14-May-18	533014	SICAGEN	15-May-18
533018	SIMPLXMIL	14-May-18	523164	SIPIND	15-May-18
533019	SIMPLXPAP	14-May-18	538635	SNOWMAN	15-May-18
503229	SIMPLXREA	14-May-18	530239	SUVEN	15-May-18
532218	SOUTHBANK	14-May-18	533170	TAMBOLI	15-May-18
526500	STRGRENWO	14-May-18	505400	TEXINFRA	15-May-18
500777	TNPETRO	14-May-18	533326	TEXRAIL	15-May-18
538597	TTIENT	14-May-18	509003	TRANOCE	15-May-18
511147	WSFIN	14-May-18	530583	VOGUETEX	15-May-18
512107	ZGOLKOND	14-May-18	532683	AIAENG	16-May-18
539662	BFLAFL	15-May-18	533573	APLLTD	16-May-18
500825	BRITANNIA	15-May-18	539251	BALKRISHNA	16-May-18
506390	CLNINDIA	15-May-18	500335	BIRLACORPN	16-May-18
539876	CROMPTON	15-May-18	533260	CAREERP	16-May-18
532180	DHANBANK	15-May-18	532548	CENTURYPLY	16-May-18
526971	DHOOTIN	15-May-18	524768	EMMESSA	16-May-18
506414	DIL	15-May-18	532285	GEOJITFSL	16-May-18
503681	ELCIDIN	15-May-18	505255	GMM	16-May-18
500128	ELECTCAST	15-May-18	500690	GSFC	16-May-18

Narnolia Earning Estimate Q4FY18

Date	Company Name	Sale			EBITDA			PAT		
			YoY	QoQ		YoY	QoQ		YoY	QoQ
		Mar-18	Growth	Growth	Mar-18	Growth	Growth	Mar-18	Growth	Growth
7-May-18	EXIDEIND	2404	21.93	5.57	316	22.63	11.79	184	11.64	19.23
7-May-18	ICICIBANK	5833	(2.18)	2.19	8549	67.20	69.00	1377	(32.00)	(16.50)
8-May-18	GODREJCP	2544	6.91	(2.30)	616	13.78	7.63	437	14.18	1.10
9-May-18	EICHERMOT	2531	34.05	11.52	797	36.30	12.70	580	26.25	11.39
9-May-18	FEDERALBNK	980	16.33	3.12	640	16.58	14.03	273	6.39	4.95
9-May-18	JUBILANT	2126	29.50	2.80	446	46.40	7.10	221	48.40	4.00
10-May-18	ASIANPAINT	4560	15.37	7.07	804	12.91	(9.76)	531	10.67	(6.34)
10-May-18	NESTLEIND	2852	15.20	10.16	596	16.66	(5.82)	388	24.10	(8.38)
10-May-18	TITAN	3952	15.18	(7.52)	382	40.34	(9.52)	297	46.30	5.29
11-May-18	HAVELLS	2459	43.84	25.09	323	40.66	23.16	210	22.47	21.14
12-May-18	JKCEMENT	1207	18.70	14.54	252	3.70	10.72	139	3.30	26.00

Street Consensus Earning Estimate Q4FY18

Date	Company Name	Sale			EBITDA			PAT		
			YoY	QoQ		YoY	QoQ		YoY	QoQ
		Mar-18	Growth	Growth	Mar-18	Growth	Growth	Mar-18	Growth	Growth
7-May-18	TATACHEM	2728	598	252.30	(6.50)	6	22.60	6.20	2	5.40
8-May-18	ABB	2558	248	138.00	17.98	(8)	44.60	(15.60)	56	(19.50)
8-May-18	JUBFOOD	748	116	55.00	22.08	(6)	91.70	(15.22)	269	(16.65)
8-May-18	KAJARIACER	778	136	73.80	8.00	18	4.10	23.90	4	35.80
8-May-18	MHRIL	298	55	32.10	(4.00)	11	(8.00)	(5.80)	1	1.20
8-May-18	SANOFI	640	138	86.30	15.70	(5)	36.40	3.00	44	13.50
8-May-18	SKFINDIA	722	116	80.90	10.40	3	45.90	(5.70)	40	(6.10)
8-May-18	VESUVIUS	255	46	27.70	12.00	12	15.00	11.00	18	13.90
8-May-18	WHIRLPOOL	1167	136	85.40	15.00	22	9.50	53.00	15	60.70
9-May-18	ARVIND	2817	257	82.00	14.29	4	11.48	3.49	(22)	(7.23)
9-May-18	JINDALSTEL	7893	1954	(213.10)	21.70	11	25.90	21.60		
9-May-18	MASFIN	81	58	29.40	67.00	10	77.60	13.50	97	16.10
9-May-18	PARAGMILK	501	54	24.70	17.00	(4)	3.90	(8.40)	(25)	(3.10)
9-May-18	SHARDACROP	702	163	85.40	18.10	116	0.00	327.30	(14)	761.60
9-May-18	SIS	1571	93	50.50		2	34.20	10.50	68	8.50
10-May-18	APOLLOTYRE	3952	521	244.20	18.80	(2)	40.80	4.90	7	(0.50)
10-May-18	LAURUSLABS	568	120	57.00	19.97	19	1.10	37.42	(23)	63.34
10-May-18	MPHASIS	1741	296	249.20	15.60	5	24.10	7.90	29	15.90
10-May-18	NAVNETEDUL	307	55	39.00	46.50	76	96.90	169.00	131	228.70
10-May-18	TATACOMM	4158	613	6.40	(3.12)	1	22.01	0.04	(90)	
10-May-18	UJIVAN	237	85	27.70	73.00	9	104.00	13.00	43	(6.00)
10-May-18	UNIONBANK	2408	1475	(1309.30)	1.00	(5)	(31.00)	(11.00)	(1303)	5.00
10-May-18	ZEEL	1687	443	168.00	10.37	(8)	(5.55)	(25.47)	(58)	(47.90)
11-May-18	AARTIIND	1009	175	85.60	20.90	2	14.60	(1.60)	15	(5.10)
11-May-18	ABFRL	1732	130	26.90	7.30	(7)	14.00	(5.90)	23	(23.10)
11-May-18	CANBK	3290	2183	(653.10)	21.00	(11)	(27.00)	(23.00)	(405)	(619.00)
11-May-18	GSKCONS	1165	241	187.00	5.77	13	11.01	18.15	6	14.28
11-May-18	PGHH	643	183	115.60	12.00	(9)	18.70	(13.20)	16	(11.90)
11-May-18	RAIN	3624	774	367.30	46.80	15	75.40	12.70	191	8.90
11-May-18	SOLARINDS	569	121	65.20	28.80	22	31.30	15.70	19	20.30

Result Q4FY18

BSE Code	Company Name	Sale	Sale Growth	PAT	PAT Growth
532735	RSYSTEMS	152	5.34	3.83	(27.19)
522122	PORRITSPEN	24	7.69	4.50	(10.36)
533121	SQSBFSI	76	31.48	10.40	131.11
500042	BASF	1344	5.60	66.00	55.11
521016	ICIL	406	(13.17)	26.79	(45.10)
506532	KERALACHEM	89	19.67	5.48	270.27
500620	GESHIP	769	4.09	(418.20)	1124.24
505700	ELECON	438	26.85	53.88	85.15
500674	SANOFI	618	20.48	82.50	37.50
533155	JUBLFOOD	780	27.26	68.00	911.90
532424	GODREJCP	2528	6.20	617.00	59.19
532301	TATACOFFEE	440	11.43	22.40	(62.54)
532706	INOXLEISUR	323	12.07	57.60	16841.18
521064	TRIDENT	1185	(6.57)	51.00	(48.83)
533200	TALWALKARS	194	20.50	42.76	73.75
509631	HEG	1292	401.20	634.00	(16524.87)
532240	INDNIPPON	121	25.56	28.72	203.92
500233	KAJARIACER	751	4.34	69.63	(1.51)
521194	SILINV	46	583.09	35.30	1165.23
520113	VESUVIUS	227	(0.38)	24.71	5.46
500002	ABB	2495	16.40	102.49	13.90
505010	AUTOAXLES	470	33.78	28.28	63.75
526612	BLUEDART	717	5.99	34.13	39.19
590031	DENORA	5	(35.26)	(1.75)	(242.28)
530023	FORTUNEF	107	93.53	9.38	75.00
509635	HINDCOMPOS	57	26.18	10.16	40.14
533088	MHRIL	296	(4.62)	38.55	21.15
532416	NEXTMEDIA	20	19.48	0.23	(113.69)
509820	PAPERPROD	545	7.83	18.00	10.29
503100	PHOENIXLTD	437	(3.92)	104.24	102.80
502742	SINTEX	617	(6.71)	55.50	12.03
500472	SKFINDIA	704	7.63	71.50	23.49
532872	SPARC	20	(51.71)	2.48	(107.69)
513151	STINDIA	3	(72.04)	(5.09)	54.71
500238	WHIRLPOOL	1258	23.97	91.38	22.86

Economic Calendar

Country	Monday 7th May 18	Tuesday 8th May 18	Wednesday 9th May 18	Thursday 10th May 18	Friday 11th May 18
US	German Factory Orders m/m , Italian Retail Sales m/m , Sentix Investor Confidence , BRC Retail Sales Monitor y/y	NFIB Small Business Index , JOLTS Job Openings , IBD/TIPP Economic Optimism , Loan Officer Survey	PPI m/m , Core PPI m/m , Final Wholesale Inventories m/m , Crude Oil Inventories , 10-y Bond Auction	CPI m/m , Core CPI m/m , 30-y Bond Auction , Federal Budget Balance	Import Prices m/m , Prelim UoM Consumer Sentiment, Prelim UoM Inflation Expectations
UK/EURO ZONE	Consumer Credit m/m	German Industrial Production m/m , German Trade Balance , French Gov Budget Balance , French Trade Balance , Halifax HPI m/m , EU Economic Forecasts		French Industrial Production m/m , ECB Economic Bulletin , Italian Industrial Production m/m , Manufacturing Production m/m , BOE Inflation Report , MPC Official Bank Rate Votes, Monetary Policy Summary, Official Bank Rate	French Final CPI m/m , French Prelim Private Payrolls q/q
INDIA					



Narnolia Securities Ltd

201 | 2nd Floor | Marble Arch Building | 236B-AJC Bose
Road | Kolkata-700 020 , Ph : 033-40501500

email: narnolia@narnolia.com,
website : www.narnolia.com

Risk Disclosure & Disclaimer: This report/message is for the personal information of the authorized recipient and does not construe to be any investment, legal or taxation advice to you. Narnolia Securities Ltd. (Hereinafter referred as NSL) is not soliciting any action based upon it. This report/message is not for public distribution and has been furnished to you solely for your information and should not be reproduced or redistributed to any other person in any form. The report/message is based upon publicly available information, findings of our research wing "East wind" & information that we consider reliable, but we do not represent that it is accurate or complete and we do not provide any express or implied warranty of any kind, and also these are subject to change without notice. The recipients of this report should rely on their own investigations, should use their own judgment for taking any investment decisions keeping in mind that past performance is not necessarily a guide to future performance & that the value of any investment or income are subject to market and other risks. Further it will be safe to assume that NSL and /or its Group or associate Companies, their Directors, affiliates and/or employees may have interests/ positions, financial or otherwise, individually or otherwise in the recommended/mentioned securities/mutual funds/ model funds and other investment products which may be added or disposed including & other mentioned in this report/message.