

Event Today

Concall

KEC Intl : 9:30 AM

CEAT : 9:30 AM

Zensar : 9:30 AM

RPG LifeSc : 9:30 AM

Care Rating : 3:00 PM

Time Techno : 3:30 PM

Care Rating : 4:00 PM

Dividend

INDAG : Rs 1.5/-

KITEX : Rs 0.75/-

RALLIS : Rs 2.5/-

(Exdate : 9.6.2017)

Special Dividend

RALLIS : Rs 1.25/-

(Exdate : 9.6.2017)

Buy Back of Shares

RJL

(Exdate : 9.6.2017)

Reduction of Capital

NETWORK

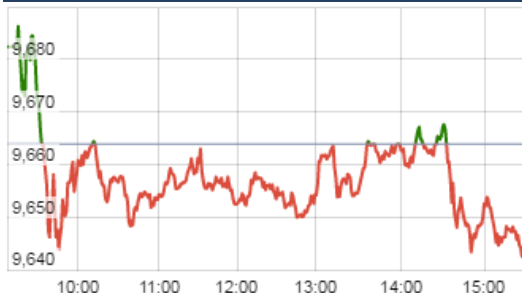
(Exdate : 9.6.2017)

Block Deal

HDIL , MANINDS

SHAKTIPUMP

Nifty Intraday Chart



Market Outlook

Indian equities gave a range bound and choppy movement throughout the day on yesterday and after opening on a subdued note, Nifty traded in the narrow range of 9641 and 9689. At the end of the day the index closed at 9647.25. It had a net loss of 0.17% over the previous trading day's close. The midcap and small cap indices slightly outshined the benchmark index and closed the day in green.

On the sectoral front, Metal and Pharmaceuticals stocks were on the buyers' radar. However some selling pressure was witnessed in Information Technology stocks. The breadth of the market was slightly positive with more advances than declines.

Market

Market	Value	% Change
Morning Traded Market		
SGX NIFTY	9,680.00	0.05%
NIKKIE	20072.53	0.81%
HANG SENG	26,029.85	-0.13%
Yesterday Closing Market		
Sensex	31,213.66	-0.19%
Nifty	9,647.25	-0.17%
DOW	21,182.53	0.04%
NASDAQ	6,321.76	0.39%
CAC	5,264.24	-0.02%
DAX	12,713.58	0.32%
FTSE	7,449.98	-0.38%
EW ALL SHARE	17,444.74	-0.12%

% Change in 1 day

Commodity Price (Yesterday Closing)

Commodity/Currencies	Value	% Change
GOLD	29131.00	-1.05%
SILVER	40050.00	-1.24%
CRUDEOIL	47.85	-0.19%
NATURALGAS	196.20	-0.10%
DOLLAR/RS.	64.39	-0.17%
EURO/RS.	72.44	0.10%
POUND/RS.	83.43	0.17%

% Change in 1 day

Institutional Turnover

FII			
Investor	Buy(Cr.)	Sale(Cr.)	Net(Cr.)
08-Jun-17	5835	5744	91
Jun-17	76435	77484	(1049)
2017	76435	77484	(1049)

DII			
Investor	Buy(Cr.)	Sale(Cr.)	Net(Cr.)
08-Jun-17	3642	2903	739
Jun-17	49775	45264	4511
2017	49775	45264	4511

Quote of the Day : "What you really want to do in investments is figure out what's important and knowable. If it's unimportant or unknowable you forget about it." **Warren Buffett**

SHREECEM

"BUY"

9th June 2017

Aggressive capacity expansion plan will help company in gaining market share (targeted to reach a 33.6 MTPA capacity by the end of 2019). Deepening its rich in eastern region and price improvement in North region will be a key positive for the company. Going ahead, improvement in Cement prices will help in absorbing spurt in operating costs. Better cost efficiencies, lower capital cost for expansion and planned capacity addition in next few years without leveraging its Balance sheet makes SHREECEM one of the best Company in our universe. We remain convinced on cash generating abilities of the company. Thus, we recommend "BUY" rating on the stock with the TP of Rs 19805

BAYERCROP

"BUY"

8th June 2017

Bayer Cropsciences Ltd has come out with a buy-back of 1020408 shares (2.89% of paid up capital) at a price of 4900/- per share. This buy-back is attractive to retail investors as 15% is reserved for retail investors.

As per our analysis, we expect 75% acceptance ratio in this buyback and may fetch upto 6% tax adjusted safer return in 50-55 days.

CMP is 4670/-.. We recommend investors to buy Bayercrop in the range of 4400-4500/- and tender in the buyback.

Record date will be announced later once company get the necessary shareholders approval through postal ballot.

**For details, refer to our daily report- India Equity Analytics*

Top News

Federal Bank is hopeful of seeing FY18 loan growth in the vicinity of 18-20 percent and expect net interest margins to be steady at 3.25 percent. The bank will maintain equal share of book across its three segments that is corporate, retail and small & medium enterprises (SMEs) . The bank would also look at raising capital to fund growth and that they have an enabling resolution to do so but would need to take shareholders' approval. The timing and instrument to raise capital will be decided later.

Bharat Wire Ropes said that the current order book is around Rs 60 crore but this time they booked additional Rs 37 crore mainly from domestic market and exports. Company is targeting Rs 300 crore of revenue in FY18 . The total debt is around Rs 330 crore for the new project. Domestic business will be around 40 percent, export around 60 percent and if everything goes smoothly we might touch 80 percent exports in the coming years.

Bajaj Electricals' advertising spend in the ongoing financial year is likely to spike by almost a third with the company expected to extend more hand-outs in below-the-line promotional activities. Company attributed this to the company's rollout of its new distribution model for consumer products achieving the footprint.

The company could spend Rs 100 crore on advertising and sales promotion, 31.6 percent higher than the Rs 76 crore it spent on the same in the last financial year

IOC sets extensive maintenance shutdown plans for units . IOC plans to shut a 150,000 barrel per day (bpd) crude unit at its 300,000 bpd Panipat refinery in northern India and an associated naphtha cracker plant for about a month in July, the sources said, freeing up some naphtha for exports

Healthcare Global Enterprises has launched 125-bed cancer hospital in Nagpur. The company specialises in cancer care and has 18 cancer centres across India. It recently acquired addition 49.9 percent stake in its subsidiary HCG Pinnacle for Rs 1,8 crore. Its average revenue per bed is Rs 30,000 and it is focussing on day care chemotherapy.

IOC sets extensive maintenance shutdown plans for units . IOC plans to shut a 150,000 barrel per day (bpd) crude unit at its 300,000 bpd Panipat refinery in northern India and an associated naphtha cracker plant for about a month in July, the sources said, freeing up some naphtha for exports.

Petronet LNG reports said France-based investor offloaded its entire stake in the company. Company's 7.6 crore equity shares (representing 10 percent of paid-up equity) traded on exchanges in the price range of Rs 424.90-430.15 in opening. GDF International proposed to divest its entire shareholding of 10 percent in the company for USD 512 million.

Endurance Technologies plans to expand their installed capacity by 50 percent over the next 4 to 6 quarters. Endurance Technologies said the Bajaj Auto has been their single largest customer and they have always been optimistic on Bajaj numbers but going forward they are working on reducing concentration on one single company as a consumer. This is basically for capacity in Chennai. Expansion is to cater to fresh orders from Royal Enfield, some extra orders which are letter of interest (LoI) right now from a company which is tier I vendor of Hyundai and also because the company has visibility of further orders coming in from South India, which are likely to be around Rs 25 crore . The revenues from Chennai plant are expected to increase from Rs 107 crore to Rs 155 crore . Company is targeting 7-8 percent revenue growth on a consolidated basis.

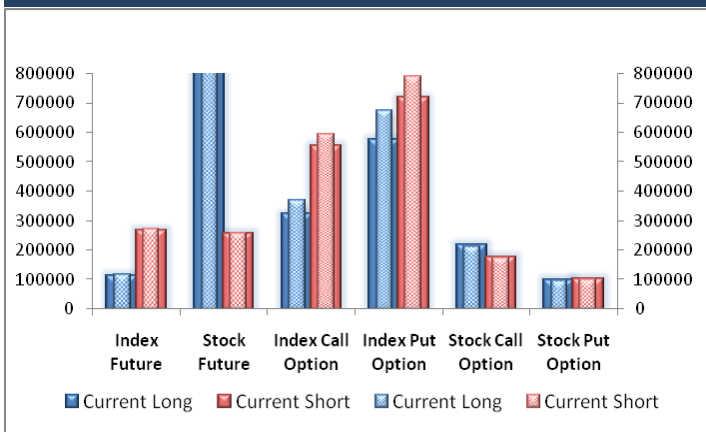
Strides Shasun has received approval from the US health regulator for Amantadine Hydrochloride, used for the treatment of Parkinsons disease and select viral infections

Block Deal

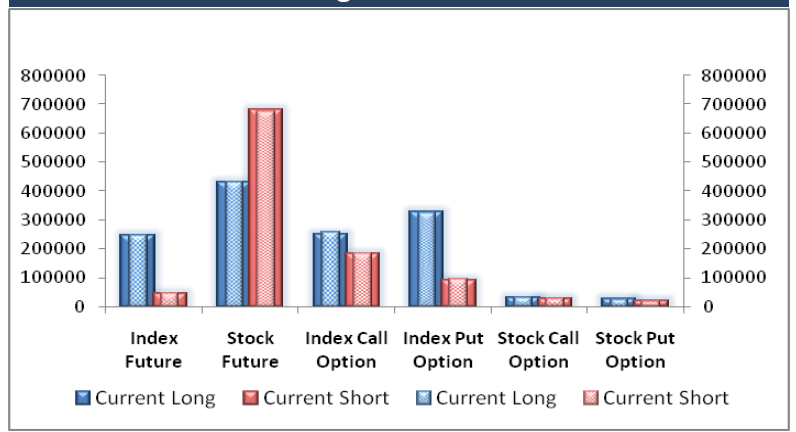
Exchange	Deal Date	Company	Client Name	Deal Type	Quantity	Price
NSE	08-Jun-17	HDIL	SHAASTRA SECURITIES TRADING Pvt Ltd	BUY	2191742	89.56
NSE	08-Jun-17	JHS	BHAVIN Y MEHTA	BUY	251092	71.02
NSE	08-Jun-17	KRIDHANINF	MARFATIA NISHIL SURENDRA	BUY	957410	77.75
NSE	08-Jun-17	MANINDS	RAHUL DOSHI	BUY	321017	69.05
NSE	08-Jun-17	PENIND	FRANKLIN TEMP INVT FRANKLIN INDIA SMALL	BUY	2494400	52.25
NSE	08-Jun-17	SHAKTIPUMP	N.K. SECURITIES	BUY	92193	454.78
NSE	08-Jun-17	WEBELSOLAR	MANGAL SAVITRI BIZCON PRIVATE Ltd	BUY	135618	123.71
NSE	08-Jun-17	HDIL	SHAASTRA SECURITIES TRADING Pvt Ltd	SELL	2191742	89.63
NSE	08-Jun-17	JHS	BHAVIN Y MEHTA	SELL	250888	71.25
NSE	08-Jun-17	KRIDHANINF	MARFATIA NISHIL SURENDRA	SELL	903936	77.72
NSE	08-Jun-17	MANINDS	RAHUL DOSHI	SELL	249017	68.97
NSE	08-Jun-17	PENIND	EIGHT CAPITAL MASTER FUND LTD	SELL	3273503	52.51
NSE	08-Jun-17	SHAKTIPUMP	N.K. SECURITIES	SELL	92193	455

F&O OPEN INTEREST (Number of Contracts)

Individual

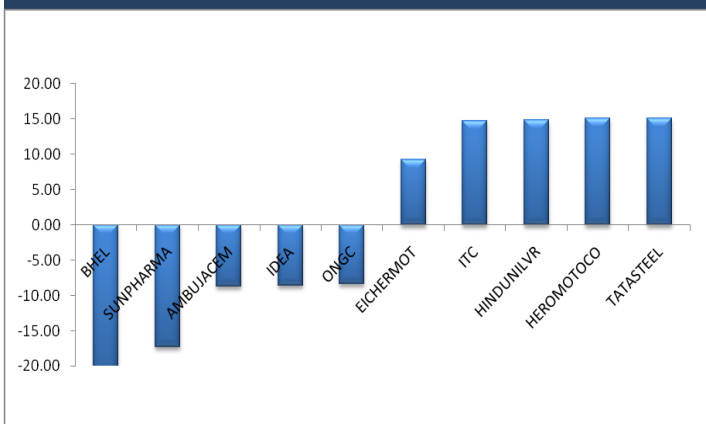


Foreign Institutions

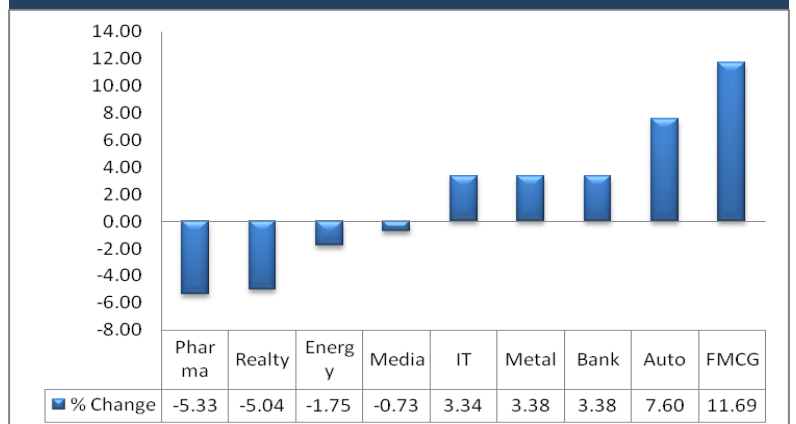


MARKET MOVERS (1 MONTH CHANGE)

Nifty Movers



NSE Sectoral Indices Performance



Result Calendar Q4FY17

BSE Code	Company Name	Date	BSE Code	Company Name	Date
532332	CURATECH	09-Jun-17	520113	VESUVIUS	12-Jun-17
526604	LIPPISYS	09-Jun-17	509026	VJTFEDU	12-Jun-17
523371	MAWANASUG	09-Jun-17	532959	GAMMNINFRA	13-Jun-17
526415	OKPLA	09-Jun-17	539207	MANPASAND	13-Jun-17
502589	VAPIPPR	09-Jun-17	532931	BURNPUR	14-Jun-17
520077	AMTEKAUTO	10-Jun-17	532127	MOBILTEL	14-Jun-17
535693	BRAHMINFRA	10-Jun-17	506003	SUDAI	14-Jun-17
532282	CASTEXTECH	10-Jun-17	513629	TULSYAN	14-Jun-17
513691	JMTAUTOLTD	10-Jun-17	531819	NUWAY	15-Jun-17
513335	METALFORGE	10-Jun-17	531613	MAL	16-Jun-17
537820	VFL	10-Jun-17	507435	KHODAY	28-Jun-17
523475	LOTUSCHO	12-Jun-17	519234	SIEL	30-Jun-17
540497	SCHAND	12-Jun-17	532313	MAHLIFE	25-Jul-17
532877	SIMPLEX	12-Jun-17	524038	VENLONENT	31-Jul-17
533540	TREEHOUSE	12-Jun-17			

Economic Calendar

Country	Monday 5th June 17	Tuesday 6th June 17	Wednesday 7th May 17	Thursday 8th June 17	Friday 9th June 17
US	Ivey PMI , Final Services PMI , ISM Non-Manufacturing PMI , Factory Orders m/m , Labor Market Conditions Index m/m	IBD/TIPP Economic Optimism , NFIB Small Business Index.	10-y Bond Auction , 30-y Bond Auction , Consumer Credit m/m	Unemployment Claims , JOLTS Job Openings, Federal Budget Balance, Natural Gas Storage	Final Wholesale Inventories m/m
UK/EURO ZONE	Spanish Services PMI , Italian Services PMI , French Final Services PMI , German Final Services PMI , Final Services PMI , Sentix Investor Confidence , Services PMI	Halifax HPI m/m , Retail Sales m/m , French Trade Balance , 30-y Bond Auction.	German Factory Orders m/m , French Gov Budget Balance , Revised GDP q/q , NIESR GDP Estimate	German Industrial Production m/m , Italian Quarterly Unemployment Rate , Minimum Bid Rate , ECB Press Conference	Manufacturing Production m/m , Goods Trade Balance , Construction Output m/m , Consumer Inflation Expectations , Industrial Production m/m
INDIA	Nikkei Services PMI		RBI Credit Policy		

Narnolia

Advance Strategy · Simple Solutions

Narnolia Securities Ltd

201 | 2nd Floor | Marble Arch Building | 236B-AJC Bose
Road | Kolkata-700 020 , Ph : 033-40501500

email: narnolia@narnolia.com,

website : www.narnolia.com

Risk Disclosure & Disclaimer: This report/message is for the personal information of the authorized recipient and does not construe to be any investment, legal or taxation advice to you. Narnolia Securities Ltd. (Hereinafter referred as NSL) is not soliciting any action based upon it. This report/message is not for public distribution and has been furnished to you solely for your information and should not be reproduced or redistributed to any other person in any form. The report/message is based upon publicly available information, findings of our research wing "East wind" & information that we consider reliable, but we do not represent that it is accurate or complete and we do not provide any express or implied warranty of any kind, and also these are subject to change without notice. The recipients of this report should rely on their own investigations, should use their own judgment for taking any investment decisions keeping in mind that past performance is not necessarily a guide to future performance & that the value of any investment or income are subject to market and other risks. Further it will be safe to assume that NSL and /or its Group or associate Companies, their Directors, affiliates and/or employees may have interests/ positions, financial or otherwise, individually or otherwise in the recommended/mentioned securities/mutual funds/ model funds and other investment products which may be added or disposed including & other mentioned in this report/message.